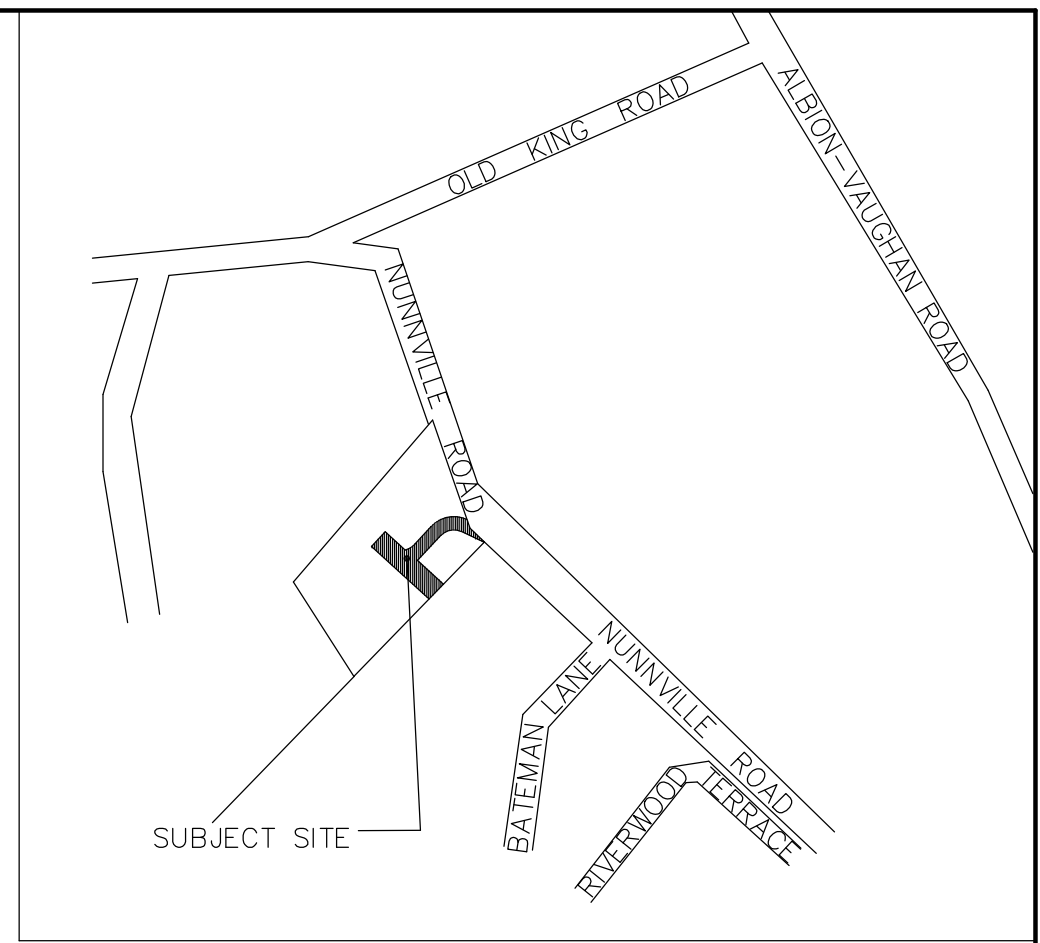
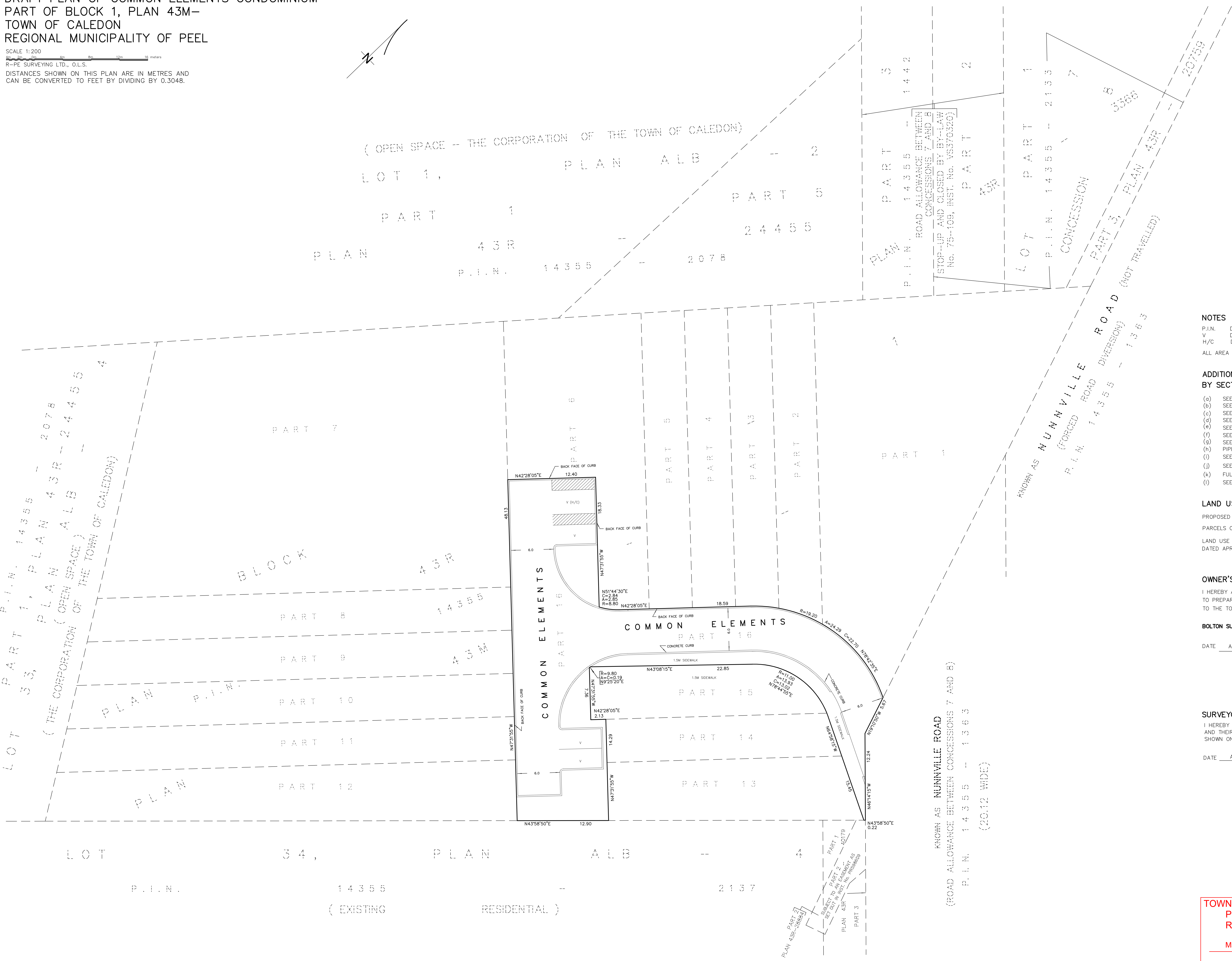


DRAFT PLAN OF COMMON ELEMENTS CONDOMINIUM
PART OF BLOCK 1, PLAN 43M-
TOWN OF CALEDON
REGIONAL MUNICIPALITY OF PEEL

SCALE 1:200
R-PE SURVEYING LTD., O.L.S.
DISTANCES SHOWN ON THIS PLAN ARE IN METRES AND
CAN BE CONVERTED TO FEET BY DIVIDING BY 0.3048.



KEY PLAN (NOT TO SCALE)

NOTES

- P.I.N. DENOTES PROPERTY IDENTIFIER NUMBER
- V DENOTES VISITOR PARKING
- H/C DENOTES HANDICAP PARKING
- ALL AREA MEASUREMENTS ARE COMPUTER GENERATED.

ADDITIONAL INFORMATION AS REQUIRED BY SECTION 51(17) OF THE PLANNING ACT

- (a) SEE PLAN
- (b) SEE PLAN
- (c) SEE PLAN
- (d) SEE RESIDENTIAL/COMMERCIAL
- (e) SEE PLAN
- (f) SEE PLAN
- (g) SEE PLAN AND KEY PLAN
- (h) PIPED WATER
- (i) SEE SOIL REPORT
- (j) SEE APPROVED SITE AND GRADING PLAN
- (k) FULLY SERVICED
- (l) SEE PLAN

LAND USE

PROPOSED SITE AREA (COMMON ELEMENTS AREA) = 0.099 Ha.
PARCELS OF TIED LAND (POTL): 15 POTLS
LAND USE INFORMATION OBTAINED FROM CONCEPT PLAN PREPARED BY WSP DATED APRIL 4, 2022.

OWNER'S AGENT AUTHORIZATION

I HEREBY AUTHORIZE R-PE SURVEYING LTD., O.L.S. TO PREPARE AND SUBMIT THIS DRAFT PLAN OF COMMON ELEMENTS CONDOMINIUM TO THE TOWN OF CALEDON FOR APPROVAL.

BOLTON SUMMIT DEVELOPMENTS INC.

DATE APRIL 26th, 2022

[Signature]
SAM MORRA
AUTHORIZED SIGNING OFFICER
I HAVE THE AUTHORITY TO BIND THE CORPORATION

SURVEYOR'S CERTIFICATE

I HEREBY CERTIFY THAT THE BOUNDARIES OF THE LAND TO BE SUBDIVIDED AND THEIR RELATIONSHIP TO ADJOINING LANDS ARE ACCURATELY AND CORRECTLY SHOWN ON THIS PLAN.

DATE APRIL 26th, 2022

[Signature]
S. GONKWARDENA
ONTARIO LAND SURVEYOR

**TOWN OF CALEDON
PLANNING
RECEIVED**
May 2, 2022

rpe R-PE SURVEYING LTD.
ONTARIO LAND SURVEYORS
643 Christie Road, Suite 7
Woodbridge, Ontario L4L 8A3
Tel. (416) 635-5000 Fax (416) 635-5001
Tel. (905) 264-0881 Fax (905) 264-2099
Website: www.r-pe.ca
DRAWN: S.L. CHECKED: S.G.
JOB No. 21-434 CAD FILE No. 21434DP-1a