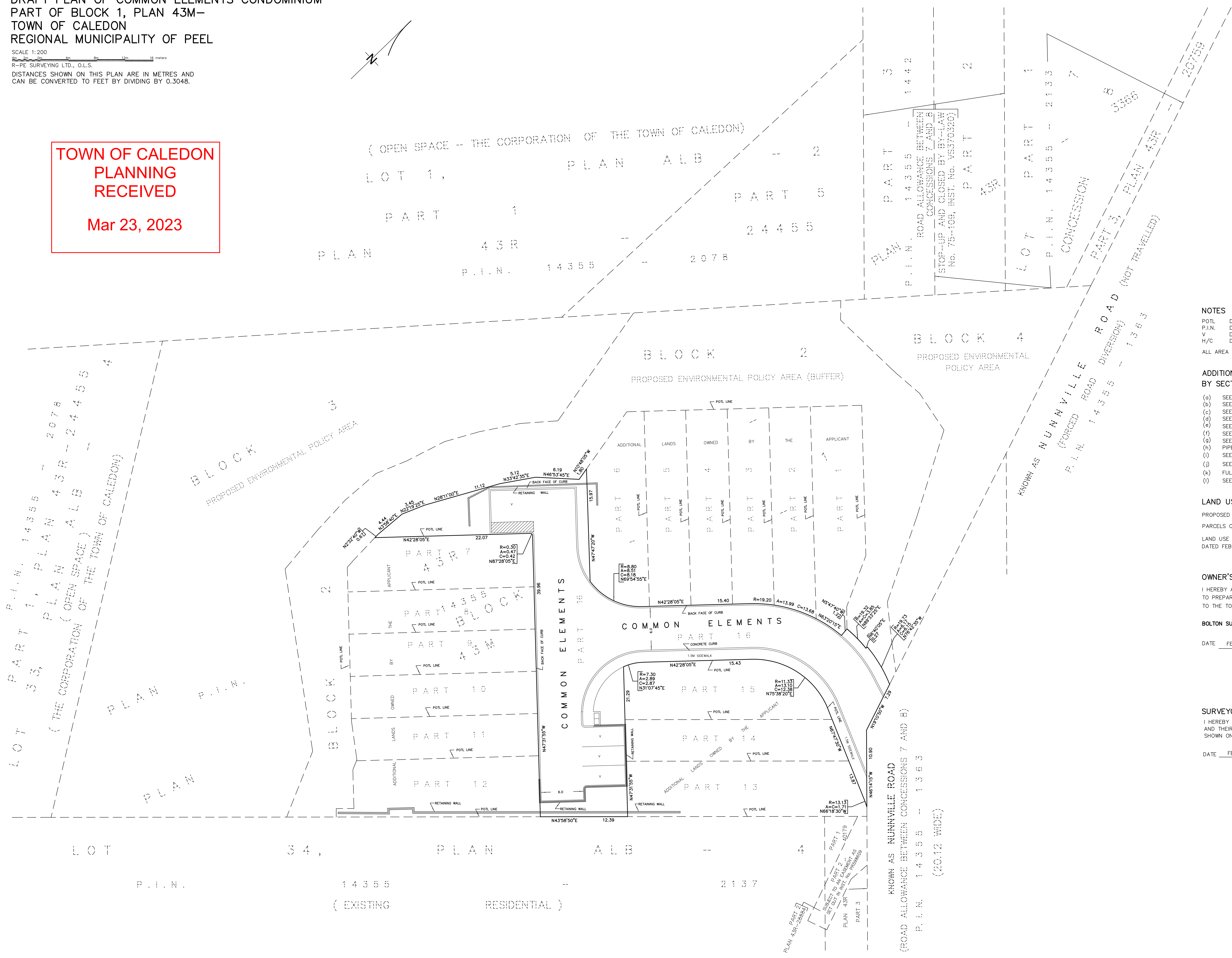
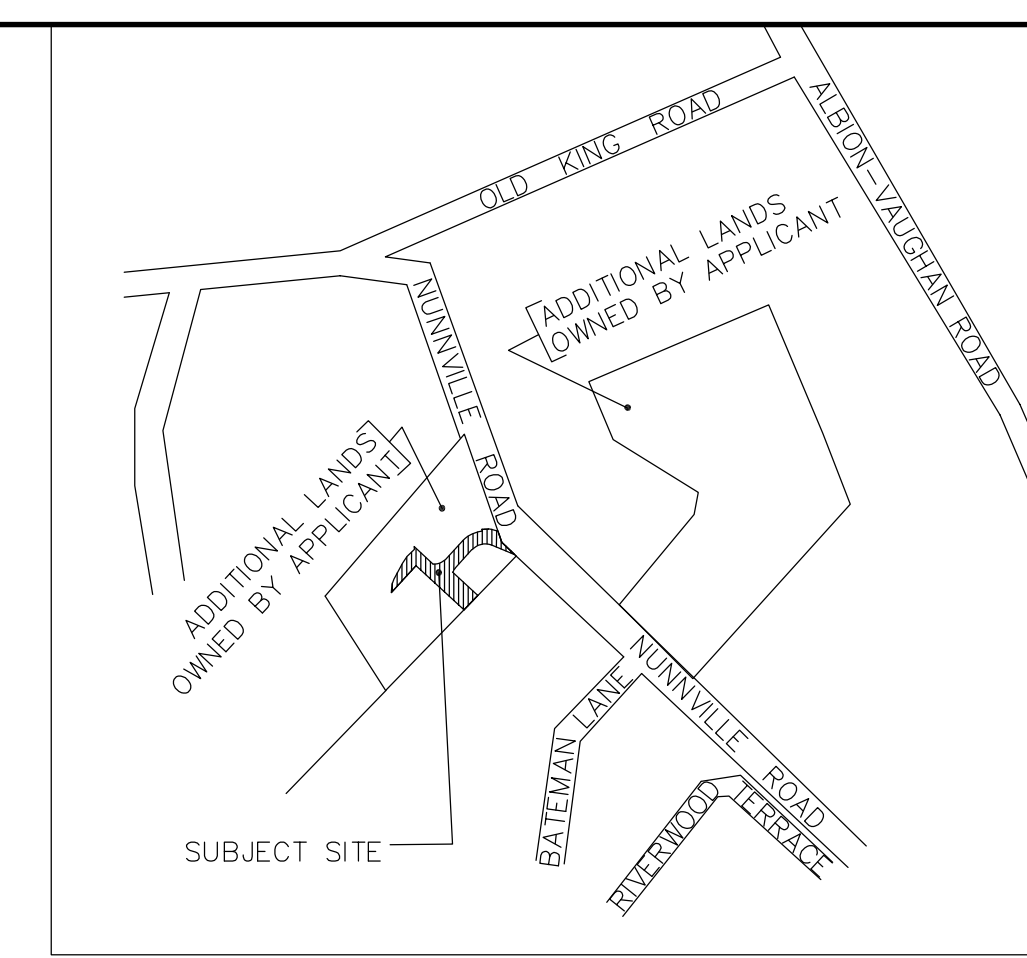


DRAFT PLAN OF COMMON ELEMENTS CONDOMINIUM  
 PART OF BLOCK 1, PLAN 43M-  
 TOWN OF CALEDON  
 REGIONAL MUNICIPALITY OF PEEL

SCALE 1:200  
 R-PE SURVEYING LTD., O.L.S.  
 DISTANCES SHOWN ON THIS PLAN ARE IN METRES AND  
 CAN BE CONVERTED TO FEET BY DIVIDING BY 0.3048.

**TOWN OF CALEDON  
 PLANNING  
 RECEIVED**

**Mar 23, 2023**



**NOTES**

- POTL DENOTES PARCEL OF TIED LAND
  - P.I.N. DENOTES PROPERTY IDENTIFIER NUMBER
  - V DENOTES VISITOR PARKING
  - H/C DENOTES HANDICAP PARKING
- ALL AREA MEASUREMENTS ARE COMPUTER GENERATED.

**ADDITIONAL INFORMATION AS REQUIRED BY SECTION 51(17) OF THE PLANNING ACT**

- (a) SEE PLAN
- (b) SEE PLAN
- (c) SEE PLAN
- (d) SEE RESIDENTIAL
- (e) SEE PLAN
- (f) SEE PLAN
- (g) SEE PLAN AND KEY PLAN
- (h) PIPED WATER
- (i) SEE SOIL REPORT
- (j) SEE SITE AND GRADING PLAN
- (k) FULLY SERVICED
- (l) SEE PLAN

**LAND USE**

PROPOSED SITE AREA (COMMON ELEMENTS AREA) = 0.118 Ha.  
 PARCELS OF TIED LAND (POTL): 15 POTLs  
 LAND USE INFORMATION OBTAINED FROM SITE PLAN PREPARED BY VA3 DESIGN INC., DATED FEBRUARY 1, 2023.

**OWNER'S AUTHORIZATION**

I HEREBY AUTHORIZE R-PE SURVEYING LTD., O.L.S. TO PREPARE AND SUBMIT THIS DRAFT PLAN OF COMMON ELEMENTS CONDOMINIUM TO THE TOWN OF CALEDON FOR APPROVAL.

**BOLTON SUMMIT DEVELOPMENTS INC.**

DATE FEBRUARY 22<sup>nd</sup>, 2023

*[Signature]*  
 SAM MORRA  
 AUTHORIZED SIGNING OFFICER  
 I HAVE THE AUTHORITY TO BIND THE CORPORATION

**SURVEYOR'S CERTIFICATE**

I HEREBY CERTIFY THAT THE BOUNDARIES OF THE LAND TO BE SUBDIVIDED AND THEIR RELATIONSHIP TO ADJOINING LANDS ARE ACCURATELY AND CORRECTLY SHOWN ON THIS PLAN.

DATE FEBRUARY 22<sup>nd</sup>, 2023

*[Signature]*  
 S. GONWARDENA  
 ONTARIO LAND SURVEYOR