



GRAY MATTER
FORESTRY CONSULTING

TREE MANAGEMENT PLAN

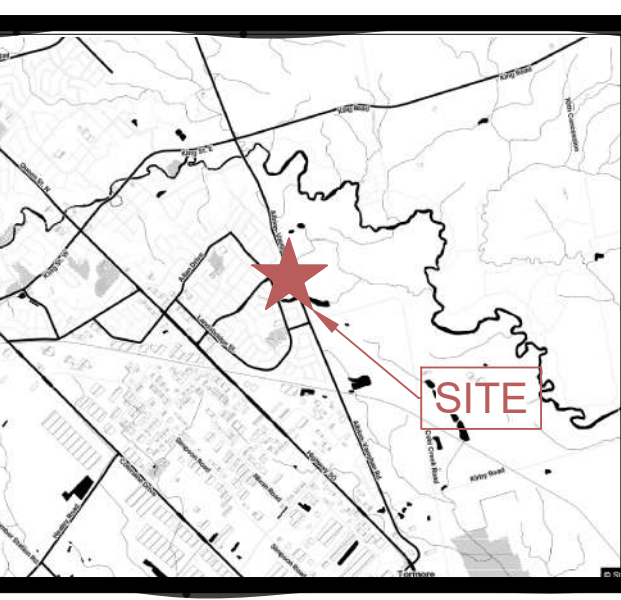
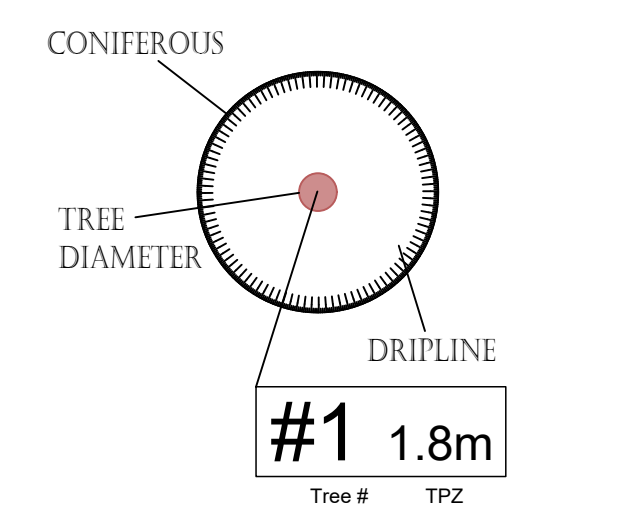
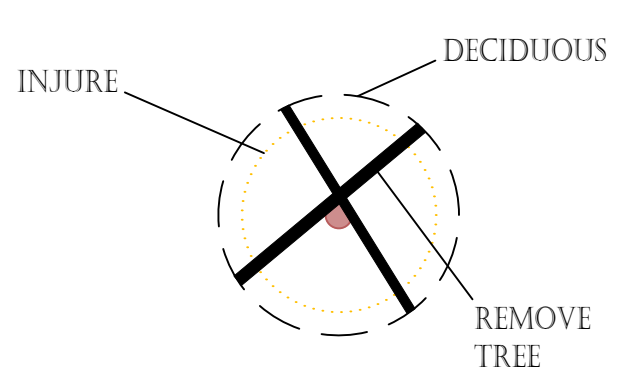
ADDRESS:
QUEENSGATE AND
ALBION RD, CALEDON ON

FEBRUARY 17, 2026

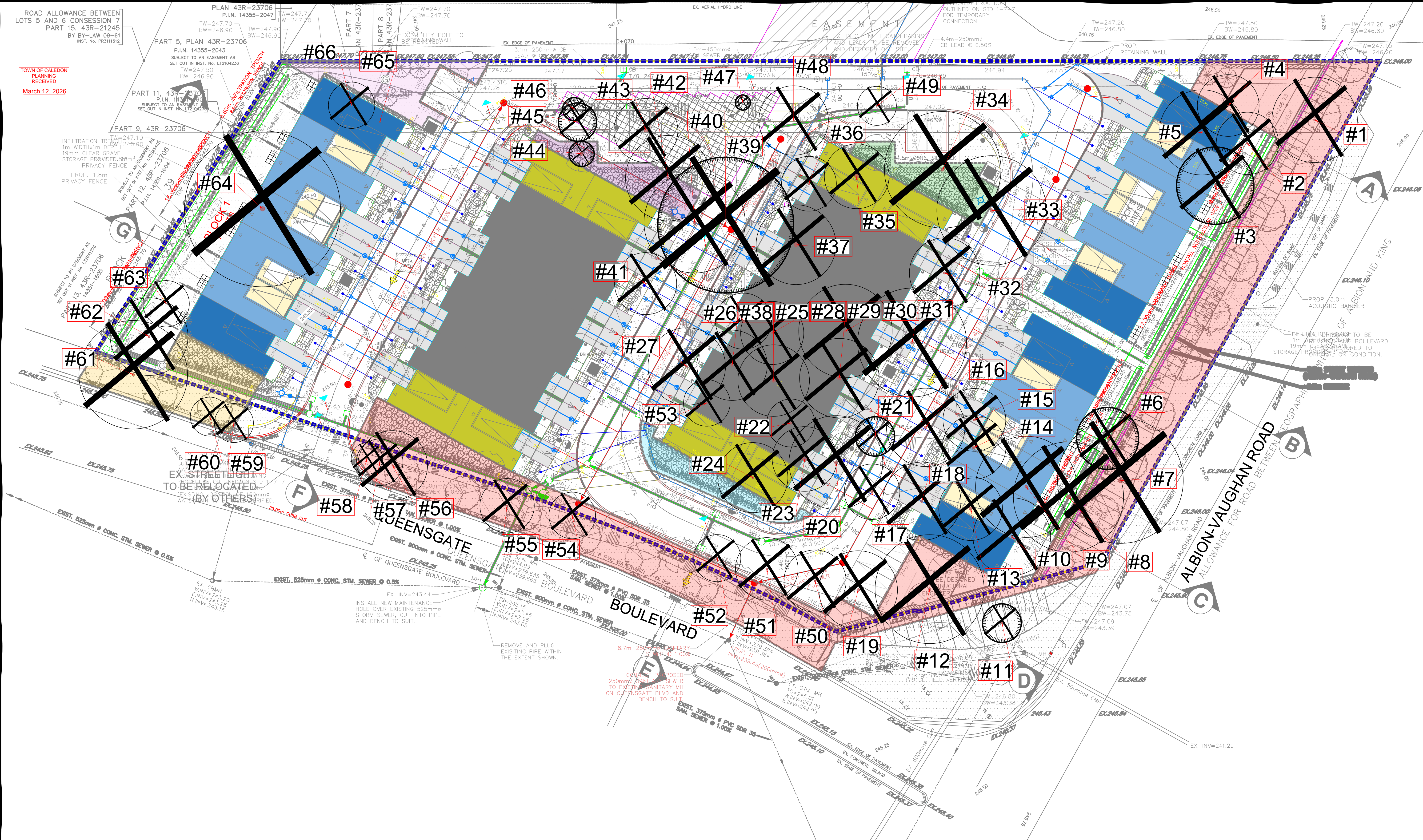
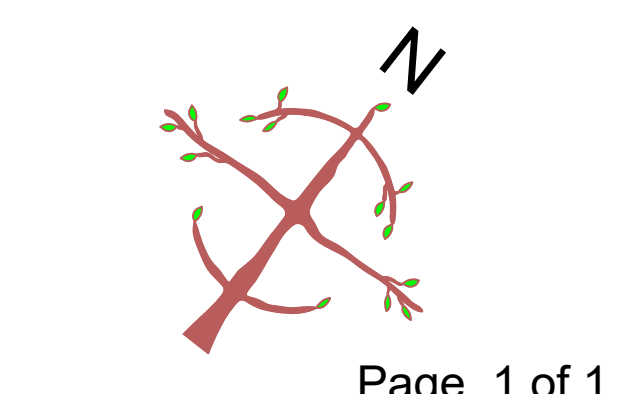
PREPARED BY:
CLAYTON GRAY
(ON-2618T)

LEGEND

TREE PROTECTION FENCING



VICINITY
Scale 1:250



Treatment	ID	Common Name	Binomial	DBH (cm)	Tree Ownership	Health	Structure	Overall	Canopy Spread (m)	Comments	Replant
REMOVE	1	Apple	<i>Malus species</i>	28	PRIVATE	FAIR	FAIR	FAIR	11	Dbh 28 26 20 19 18 16	2
REMOVE	2	Birch	<i>Betula species</i>	24	PRIVATE	GOOD	GOOD	GOOD	8	Dbh 22	2
REMOVE	3	Eastern White Cedar	<i>Thuja occidentalis</i>	31	PRIVATE	GOOD	GOOD	GOOD	10	Dbh 20	2
REMOVE	4	Apple	<i>Malus species</i>	16	PRIVATE	GOOD	FAIR	GOOD	8	Dbh 15 14 14 14	1
REMOVE	5	Apple	<i>Malus species</i>	25	PRIVATE	GOOD	GOOD	GOOD	11	Dbh 22 21 16 15	2
REMOVE	6	Eastern White Pine	<i>Pinus strobus</i>	28	PRIVATE	GOOD	GOOD	GOOD	8		2
REMOVE	7	Silver Maple	<i>Acer saccharinum</i>	61	PRIVATE	GOOD	GOOD	GOOD	16	Dbh 45	4
REMOVE	8	Silver Maple	<i>Acer saccharinum</i>	55	PRIVATE	GOOD	GOOD	GOOD	14	Dbh 46 36 29	4
REMOVE	9	Silver Maple	<i>Acer saccharinum</i>	37	PRIVATE	GOOD	GOOD	GOOD	13	Dbh 30 19	3
REMOVE	10	Silver Maple	<i>Acer saccharinum</i>	25	PRIVATE	GOOD	GOOD	GOOD	10		2
REMOVE	11	Austrian Pine	<i>Pinus nigra</i>	21	PRIVATE	GOOD	GOOD	GOOD	5	Dbh 21	2
REMOVE	12	Silver Maple	<i>Acer saccharinum</i>	39	PRIVATE	GOOD	GOOD	GOOD	14	Dbh 29	3
REMOVE	13	Silver Maple	<i>Acer saccharinum</i>	41	PRIVATE	GOOD	GOOD	GOOD	8		3
REMOVE	14	Northern Catalpa	<i>Catalpa speciosa</i>	40	PRIVATE	GOOD	GOOD	GOOD	8		3
REMOVE	15	Silver Maple	<i>Acer saccharinum</i>	29	PRIVATE	GOOD	GOOD	GOOD	8	Dbh 27 33	2
REMOVE	16	Silver Maple	<i>Acer saccharinum</i>	36	PRIVATE	GOOD	GOOD	GOOD	10	Dbh 26	3
REMOVE	17	Silver Maple	<i>Acer saccharinum</i>	33	PRIVATE	GOOD	GOOD	GOOD	7	Dbh 24	2
REMOVE	18	Silver Maple	<i>Acer saccharinum</i>	33	PRIVATE	GOOD	GOOD	GOOD	10	Dbh 26 24	2
REMOVE	19	Silver Maple	<i>Acer saccharinum</i>	37	PRIVATE	GOOD	GOOD	GOOD	10	Dbh 20	3
REMOVE	20	Silver Maple	<i>Acer saccharinum</i>	38	PRIVATE	GOOD	GOOD	GOOD	12	Dbh 29	3
REMOVE	21	Austrian Pine	<i>Pinus nigra</i>	29	PRIVATE	GOOD	GOOD	GOOD	5		2

Treatment	ID	Common Name	Binomial	DBH (cm)	Tree Ownership	Health	Structure	Overall	Canopy Spread (m)	Comments	Replant
REMOVE	22	Silver Maple	<i>Acer saccharinum</i>	33	PRIVATE	GOOD	GOOD	GOOD	6	Dbh 22	2
REMOVE	23	Willow	<i>Salix</i>	55	PRIVATE	GOOD	GOOD	GOOD	8		4
REMOVE	24	Silver Maple	<i>Acer saccharinum</i>	26	PRIVATE	GOOD	GOOD	GOOD	9	Dbh 22 17	2
REMOVE	25	Silver Maple	<i>Acer saccharinum</i>	45	PRIVATE	FAIR	GOOD	FAIR	9		3
REMOVE	26	Silver Maple	<i>Acer saccharinum</i>	28	PRIVATE	FAIR	GOOD	FAIR	9	Dbh 26 24	2
REMOVE	27	Willow	<i>Salix</i>	23	PRIVATE	GOOD	GOOD	GOOD	10	Dbh 22 18 14	2
REMOVE	28	Silver Maple	<i>Acer saccharinum</i>	34	PRIVATE	FAIR	FAIR	FAIR	8		2
REMOVE	29	Silver Maple	<i>Acer saccharinum</i>	50	PRIVATE	GOOD	GOOD	GOOD	10	Dbh 24 17	3
REMOVE	30	Silver Maple	<i>Acer saccharinum</i>	34	PRIVATE	GOOD	GOOD	GOOD	12	Dbh 30 27 25	2
REMOVE	31	Silver Maple	<i>Acer saccharinum</i>	38	PRIVATE	FAIR	GOOD	FAIR	14	Dbh 33	3
REMOVE	32	White Birch	<i>Betula papyrifera</i>	30	PRIVATE	GOOD	GOOD	GOOD	9		2
REMOVE	33	Silver Maple	<i>Acer saccharinum</i>	48	PRIVATE	GOOD	GOOD	GOOD	14	Dbh 21 16	3
REMOVE	34	Silver Maple	<i>Acer saccharinum</i>	40	PRIVATE	GOOD	GOOD	GOOD	15	Dbh 32 30 27	3
REMOVE	35	Silver Maple	<i>Acer saccharinum</i>	55	PRIVATE	POOR	POOR	POOR	8		2
REMOVE	36	Silver Maple	<i>Acer saccharinum</i>	24	PRIVATE	GOOD	GOOD	GOOD	7	Dbh 20	2
REMOVE	37	Silver Maple	<i>Acer saccharinum</i>	54	PRIVATE	FAIR	GOOD	GOOD	10	Dbh 34 32 32	4
REMOVE	38	Eastern Cottonwood	<i>Populus deltoides</i>	40	PRIVATE	DEAD	DEAD	DEAD	7		2
REMOVE	39	Balsam Fir	<i>Abies balsamea</i>	5	PRIVATE	GOOD	GOOD	GOOD	18		3
REMOVE	40	Silver Maple	<i>Acer saccharinum</i>	36	PRIVATE	GOOD	GOOD	GOOD	13	Dbh 34 25 25	3
REMOVE	41	Silver Maple	<i>Acer saccharinum</i>	20	PRIVATE	FAIR	GOOD	FAIR	8		1
REMOVE	42	Silver Maple	<i>Acer saccharinum</i>	29	PRIVATE	GOOD	GOOD	GOOD	11	24 18 dbh	2
REMOVE	43	Eastern Cottonwood	<i>Populus deltoides</i>	45	PRIVATE	DEAD	DEAD	DEAD	8		2
REMOVE	44	Austrian Pine	<i>Pinus nigra</i>	42	PRIVATE	GOOD	GOOD	GOOD	3		3

Treatment	ID	Common Name	Binomial	DBH (cm)	Tree Ownership	Health	Structure	Overall	Canopy Spread (m)	Comments	Replant
REMOVE	45	Austrian Pine	<i>Pinus nigra</i>	16	PRIVATE	GOOD	GOOD	GOOD	5		1
REMOVE	46	Austrian Pine	<i>Pinus nigra</i>	14	PRIVATE	GOOD	GOOD	GOOD	3		1
REMOVE	47	Austrian Pine	<i>Pinus nigra</i>	10	PRIVATE	GOOD	GOOD	GOOD	2		1
REMOVE	48	Silver Maple	<i>Acer saccharinum</i>	18	PRIVATE	GOOD	GOOD	GOOD	9	17 17 16 14 14 12 dbh	1
REMOVE	49	Apple	<i>Malus species</i>	15	PRIVATE	GOOD	GOOD	GOOD	5		1
REMOVE	50	Silver Maple	<i>Acer saccharinum</i>	21	PRIVATE	GOOD	GOOD	GOOD	8	15 15 dbh	2
REMOVE	51	Silver Maple	<i>Acer saccharinum</i>	26	PRIVATE	GOOD	GOOD	GOOD	8	24 24 dbh	2
REMOVE	52	Silver Maple	<i>Acer saccharinum</i>	22	PRIVATE	GOOD	GOOD	GOOD	6		2
REMOVE	53	Silver Maple	<i>Acer saccharinum</i>	15	PRIVATE	DEAD	DEAD	DEAD	6	15 14 12 dbh	1
REMOVE	54	Manitoba Maple	<i>Acer negundo</i>	15	PRIVATE	GOOD	GOOD	GOOD	6		1
REMOVE	55	Ash	<i>Fraxinus species</i>	18	PRIVATE	GOOD	GOOD	GOOD	7		1
REMOVE	56	Manitoba Maple	<i>Acer negundo</i>	20	PRIVATE	GOOD	GOOD	GOOD	9	Dbh 15 15	1
REMOVE	57	Common Buckthorn	<i>Rhamnus cathartica</i>	15	PRIVATE	GOOD	GOOD	GOOD	6	12 12 dbh	1
REMOVE	58	Manitoba Maple	<i>Acer negundo</i>	15	PRIVATE	GOOD	GOOD	GOOD	4		1
REMOVE	59	Manitoba Maple	<i>Acer negundo</i>	15	PRIVATE	GOOD	GOOD	GOOD	5	12 dbh	1
REMOVE	60	Manitoba Maple	<i>Acer negundo</i>	14	PRIVATE	GOOD	GOOD	GOOD	5		1
REMOVE	61	Manitoba Maple	<i>Acer negundo</i>	34	PRIVATE	GOOD	GOOD	GOOD	14	32 26 dbh	2
REMOVE	62	Manitoba Maple	<i>Acer negundo</i>	27	PRIVATE	GOOD	GOOD	GOOD	10	27 26 dbh	2
REMOVE	63	Common Buckthorn	<i>Rhamnus cathartica</i>	12	PRIVATE	GOOD	GOOD	GOOD	6	12 12 10 10 -dbh	1
REMOVE	64	Silver Maple	<i>Acer saccharinum</i>	60	PRIVATE	GOOD	FAIR	FAIR	20	49 43 35 24 dbh	4
REMOVE	65	Hawthorn	<i>Crataegus species</i>	20	PRIVATE	POOR	POOR	POOR	6	Covered in grapevine	1
REMOVE	66	Common Buckthorn	<i>Rhamnus cathartica</i>	12	PRIVATE	POOR	POOR	POOR	6	Covered in grapevine	1