

SPECIFICATIONS

A. GENERAL

- i) These Specifications are to be read in conjunction with the General Conditions of the contract, as prepared by and available at the offices of _____.
- ii) Prior to commencing work, the Contractor shall:
1. Become familiar with the plans, details, and specifications of this project.
 2. Visit the site to ascertain and take account of existing conditions and any deviations from the plans in work by others, and
 3. Finalize all design alternatives in consultation with the Consulting Landscape Architect.

- iii) Prior to excavating, the Contractor shall verify the location of all underground utilities. In the event of a conflict between a proposed tree location and an underground service, the exact location of the tree shall be determined on site by the Consulting Landscape Architect and/or the Town's representative.

- iv) The Contractor shall, at his or her own expense, repair any damage to existing utilities, structures, facilities, etc. done in the performance of his work.

- v) All site work shall conform to the *Canadian National Master Construction Specifications*, a copy of which can be obtained from Construction Specifications Canada, 31 Adelaide Street East P.O. Box 36, Toronto M5C 2H8; Tel: 1-844-427-2867; Email: admin@csccanoronto.ca. It is the responsibility of the Contractor to be thoroughly familiar with these specifications and their implications for this project.

B. PLANT MATERIAL

- i) All plants shall be installed true to specified names, sizes, grades, etc., and shall conform to the standards of the Canadian Nursery Landscapes Association.
- ii) All plants shall be nursery grown and sourced from a hardiness zone appropriate to site conditions, as published by Agriculture Canada, titled 'Map of Plant Hardiness Zones in Canada'.
- iii) In the event of a discrepancy in plant quantity between the Planting Plan and the Plant List, the Planting Plan shall govern.

- iv) The Contractor shall make plants available for inspection by the Consulting Landscape Architect and/or the Town's representative prior to shipping to the site. This does not limit the right of the Consulting Landscape Architect and/or the Town's representative to later reject plant material that is of poor quality, damaged during shipping or installation, performing poorly while the guarantee period is still in effect, or otherwise does not conform to the specifications.

- v) Plant substitutions must be approved in writing by the Town and the Consulting Landscape Architect prior to delivery of the material to the site. All substitutions shall be recorded on the as-recorded drawings and planting chart.

- vi) The Contractor shall use standard industry methods for planting trees and shrubs. Trees shall be turned to give the best appearance adjacent to streets or pathways. They shall also be guyed or staked immediately after planting and as detailed on the drawings.

specifications continued on next panel . . .

TOWN OF CALEDON					APRD.	C.C.	DATE: JUNE 08
NATURALIZATION SPECIFICATIONS STANDARD NOTES PART 1	2	STANDARD No. 715 NOW 704		JUNE 18	DRAWN	abal	SCALE: NTS
	1	NOTES EDIT: STANDARD No. 1175.01 NOW 715		JUNE 08			
	NO.	REVISION		APRD.	DATE		STANDARD No. 704

SPECIFICATIONS

continued from previous panel

C. BED PREPARATION

- i) The Contractor shall scarify the sides and bottom of excavated tree pits and shrub beds prior to backfilling. Due to the heavy clay soil in the Bolton area, tree and planting beds shall be backfilled to the specified depths with:

- 2 Parts "triple mix," delivered to the site, to be well-mixed with . . .

- 1 Part local topsoil (v.z., subdivision topsoil that has been removed and stockpiled.) If topsoil is unavailable, topsoil with clay content shall be imported and mixed with triple mix.

- ii) Tree pits shall be constructed with saucers and mulch as detailed.

D. TOPSOIL AND FINE GRADING

- i) The Contractor shall place 100mm of rich topsoil on approved subgrades. Topsoil shall be imported when insufficient amounts are available on site.

- ii) Minor grade deficiencies and irregularities shall be eliminated prior to seeding.

E. HYDROSEEDING

- i) The Contractor shall apply 2280 kg/ha fibre mulch over the newly seeded area to form a uniform, blotter-like ground cover that allows the absorption and percolation of water.

- ii) The area seeded in a single day shall not exceed the area that can be mulched that same day.

- iii) The Contractor shall apply the specified seed mixture using accepted industry methods for hydroseeding and at rates recommended by the seed supplier. The type and rate of fertilizer application shall be as recommended in the topsoil test report for the particular area being seeded.

F. PRELIMINARY ACCEPTANCE

- i) When landscaping is completed, the Consulting Landscape Architect shall submit a Certificate of Completion for Preliminary Acceptance to the Town of Caledon certifying that all landscape works have been completed in accordance with the approved plans.

- ii) Upon receipt of the Certificate of Completion, the Town Staff will conduct a preliminary inspection of the site and, provided that the works are in satisfactory condition, will grant preliminary acceptance of the landscaping.

specifications continued on next panel . . .

TOWN OF CALEDON					APRD.	C.C.	DATE: JUNE 08
NATURALIZATION SPECIFICATIONS STANDARD NOTES PART 2	2	STANDARD No. 716 NOW 705		APR 19	DRAWN	abal	SCALE: NTS
	1	STANDARD No. 1175.02 NOW 716		JUNE 08			
	NO.	REVISION		APRD.	DATE		STANDARD No. 705

SPECIFICATIONS

continued from previous panel

G. INTERIM ACCEPTANCE

- i) One year after Preliminary Acceptance is granted by the Town, the Consulting Landscape Architect shall submit a Certificate of Completion for Interim Acceptance to the Town of Caledon certifying that all maintenance requirements as outlined in Section G and in accordance with the approved plans have been completed.

- ii) Upon the receipt of the Certification of Completion, Town Staff will conduct an interim inspection of the site and, provided the works are in satisfactory condition, will grant Interim Acceptance of the landscaping.

H. GUARANTEE

- i) All naturalized landscaping shall carry a guarantee/maintenance of **THREE** (3) years, commencing from the date that preliminary acceptance is granted by the Municipality. The Owner shall provide the Municipality with a copy of the maintenance agreement between the Owner and the Contractor. In each of the next three summers, the consulting Landscape Architect shall conduct an inspection and prepare a report, recommending the replacements and/or works needed to achieve the intent of the approved landscape plan. The Landscape Architect shall file a copy of the report with the Municipality. Replacement plant material shall be guaranteed for a period of time determined by the Municipality.

I. MAINTENANCE

- i) The maintenance of all landscape installations throughout the guarantee period shall include but not be limited to the following:

- 1) applying appropriate fertilizer to promote growth,
- 2) pruning dead or diseased tissue,
- 3) removing dead plant material,
- 4) replacing dead coniferous naturalization species to maintain a minimum live-stocking standard of 90%.
- 5) replacing dead deciduous and shrub naturalization species to maintain a minimum live-stocking standard of 90%, and
- 6) suppressing weed growth around newly planted trees and shrubs by adding more mulch and/or removing weeds by hand, not by cutting the weeds down with power trimmers.

J. CERTIFICATE OF ASSUMPTION

- i) At the end of the guarantee period, the Contractor shall remove all tree stakes, rodent guards, and bark wrap, and shall add extra mulch where necessary. Additional items may be included as directed by the Municipality.

- ii) When these final tasks have been completed, and all items as outlined in the Development Standards have been submitted, all landscape work will be inspected by the Municipality. If satisfied that all work has been completed in accordance with the approved landscape plans, the Municipality will issue a Certificate of Assumption and release any outstanding funds.

end of specifications

K. ADDITIONAL NOTES

- Refer to the most recent version of the Development Standards for any additional requirement and submission items.

TOWN OF CALEDON					APRD.	C.C.	DATE: JUNE 08
NATURALIZATION SPECIFICATIONS STANDARD NOTES PART 3	2	STANDARD No. 717 NOW 706		JAN 18	DRAWN	abal	SCALE: NTS
	1	STANDARD No. 1175.03 NOW 717		JUNE 08			
	NO.	REVISION		APRD.	DATE		STANDARD No. 706

NOTE:
ALL STAKES AND TIES TO BE REMOVED
BY CONTRACTOR PRIOR TO FINAL
ACCEPTANCE.

WILT-PROOF IN NURSERY
PRIOR TO DELIVERY

SET WHIPS 50mm HIGHER THAN
ADJACENT FINISHED GRADE TO
ALLOW FOR SETTLEMENT

PLANTING METHOD ILLUSTRATED
APPLIES EQUALLY TO BARE ROOT,
POTTED OR B&B NURSERY STOCK

TIE TREETO STAKES WITH
BIODEGRADABLE HEAVY DUTY
JUTE MATERIAL (BINDER THINE)

NO. 1 SPRUCE HOOD STAKES
SECURED INTO GROUND JUST INSIDE
OF TREE PIT ON SIDE OF
PREVAILING WIND AS SHOWN

FINISHED OR EXISTING GRADE

SOIL LEVEL SHOULD MATCH
TOP OF ROOT BALL

SCARIFY, IRRIGATE AND FERTILIZE
THE INSIDE OF TREE PIT
PRIOR TO PLANTING

EXCAVATE AND PREPARE PLANTING
BED TO MINIMUM 500mm DEPTH
AS SPECIFIED

PREVAILING WIND

PRUNING SHALL BE LIMITED
TO DEAD OR BROKEN BRANCHES
MAINTAIN ORIGINAL SHAPE OF THE
TREE. DO NOT TRIM LEADER
BRANCH.

SPIRAL PLASTIC SLEEVE RODENT
GUARD MANDATORY DURING
MAINTENANCE PERIOD - OR
APPROVED EQUAL TO REACH JUST
UNDER SURFACE OF SOIL

KEEP MULCH BACK 50mm
FROM TRUNK OF TREE

CONSTRUCT 100mm SOIL SAUCER AROUND
TREE BASE AND COVER WITH 75mm
APPROVED SHREDDED WOOD MULCH

SPECIFIED SOIL MIXTURE FIRMLY
COMPACTED TO ELIMINATE AIR
POCKETS AND PREVENT SETTLEMENT

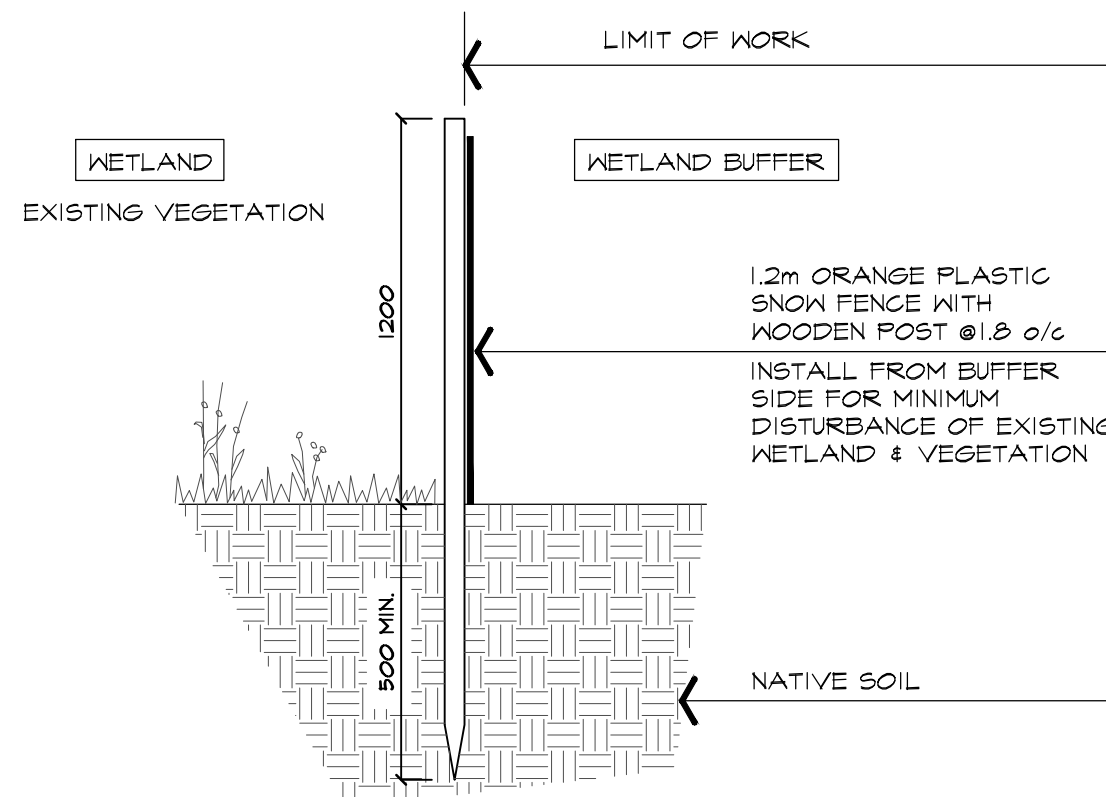
REMOVE NURSERY POTS OR
WRAP PRIOR TO PLANTING

COMPACTED SUBGRADE

4 WHIP PLANTING DETAIL

TYPICAL INSTALLATION

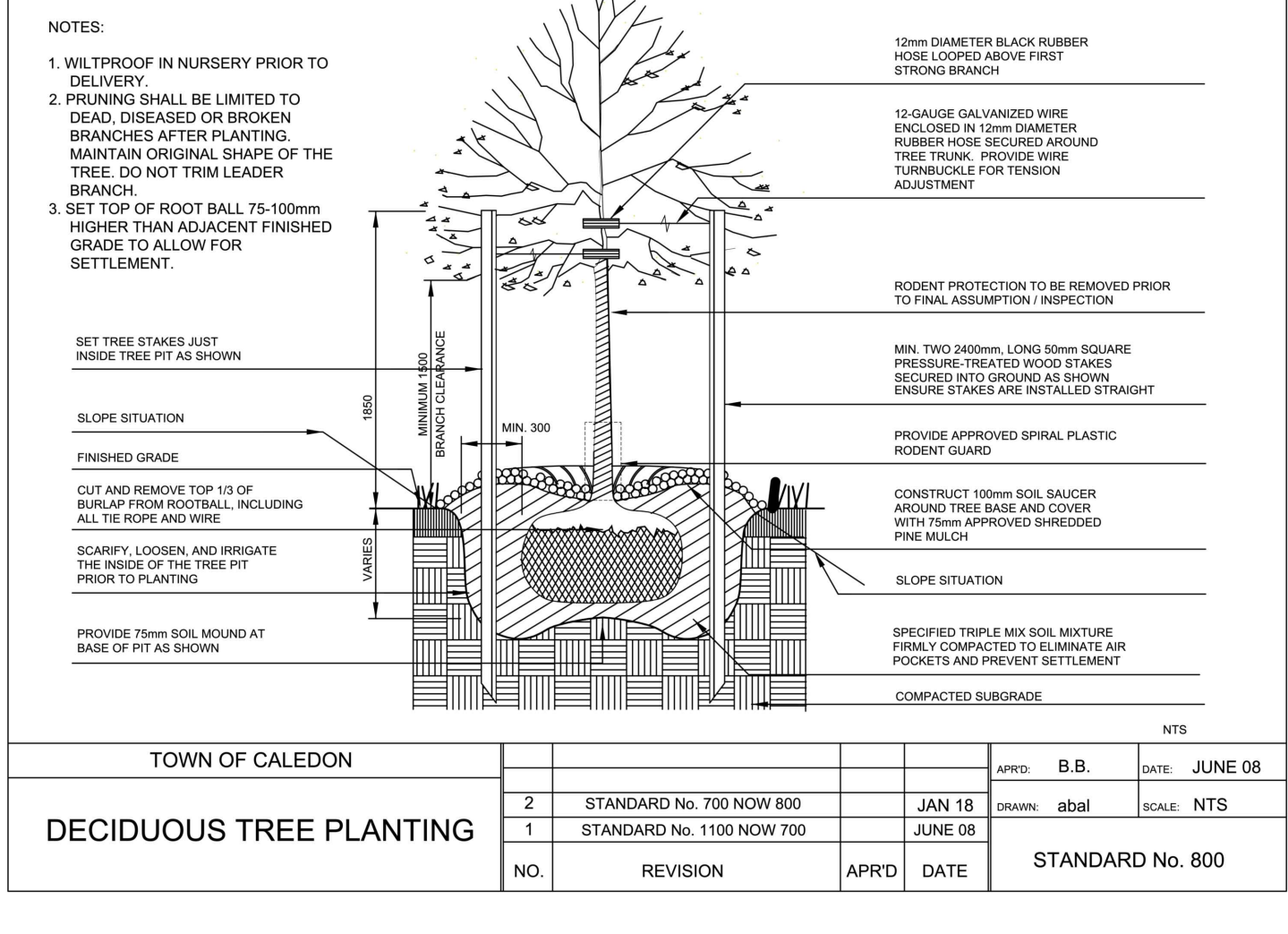
NTS



5 PROTECTION FENCING

TYPICAL DETAIL

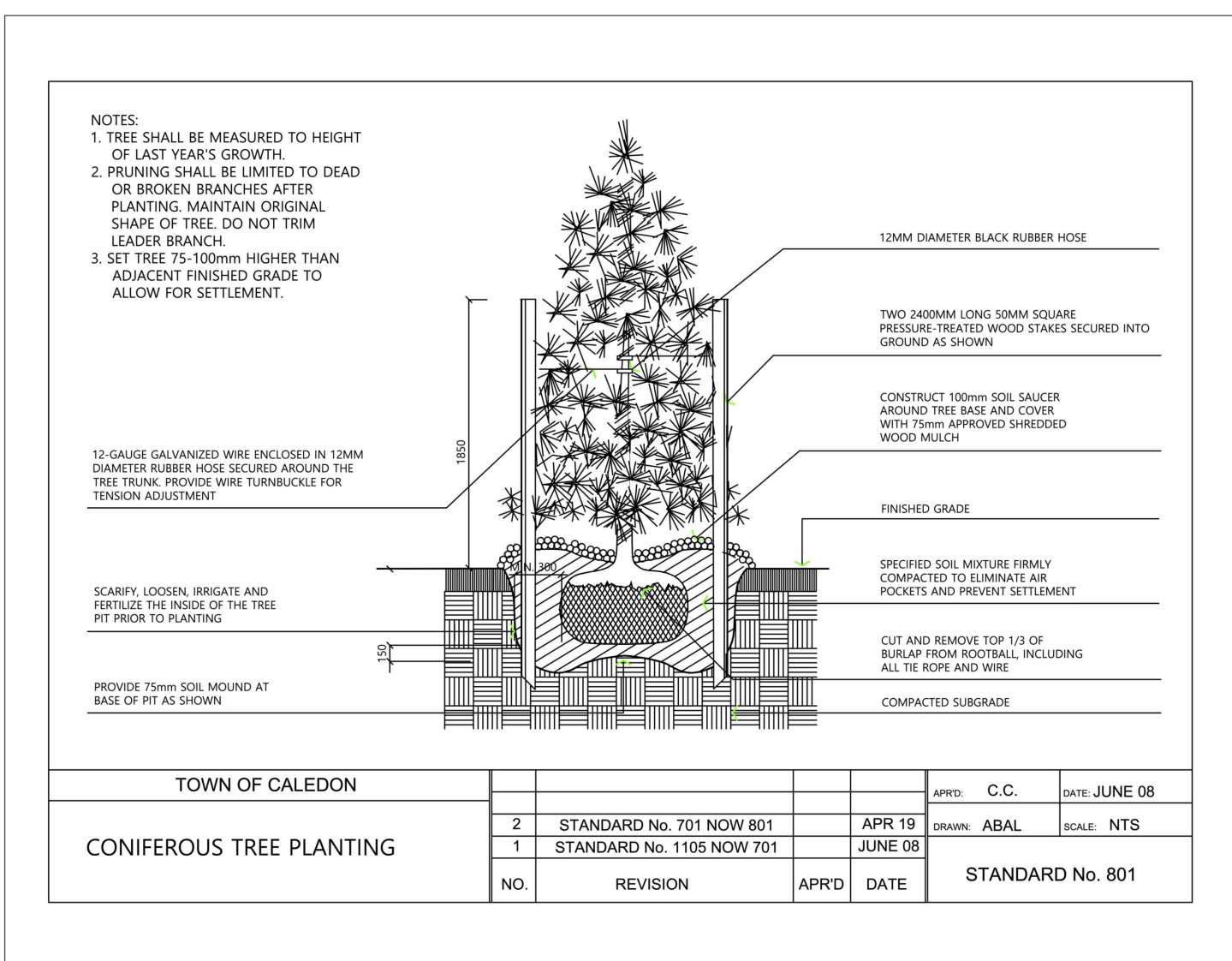
N.T.S.



1 DECIDUOUS TREE PLANTING DETAIL

TOWN OF CALEDON STANDARD DETAIL

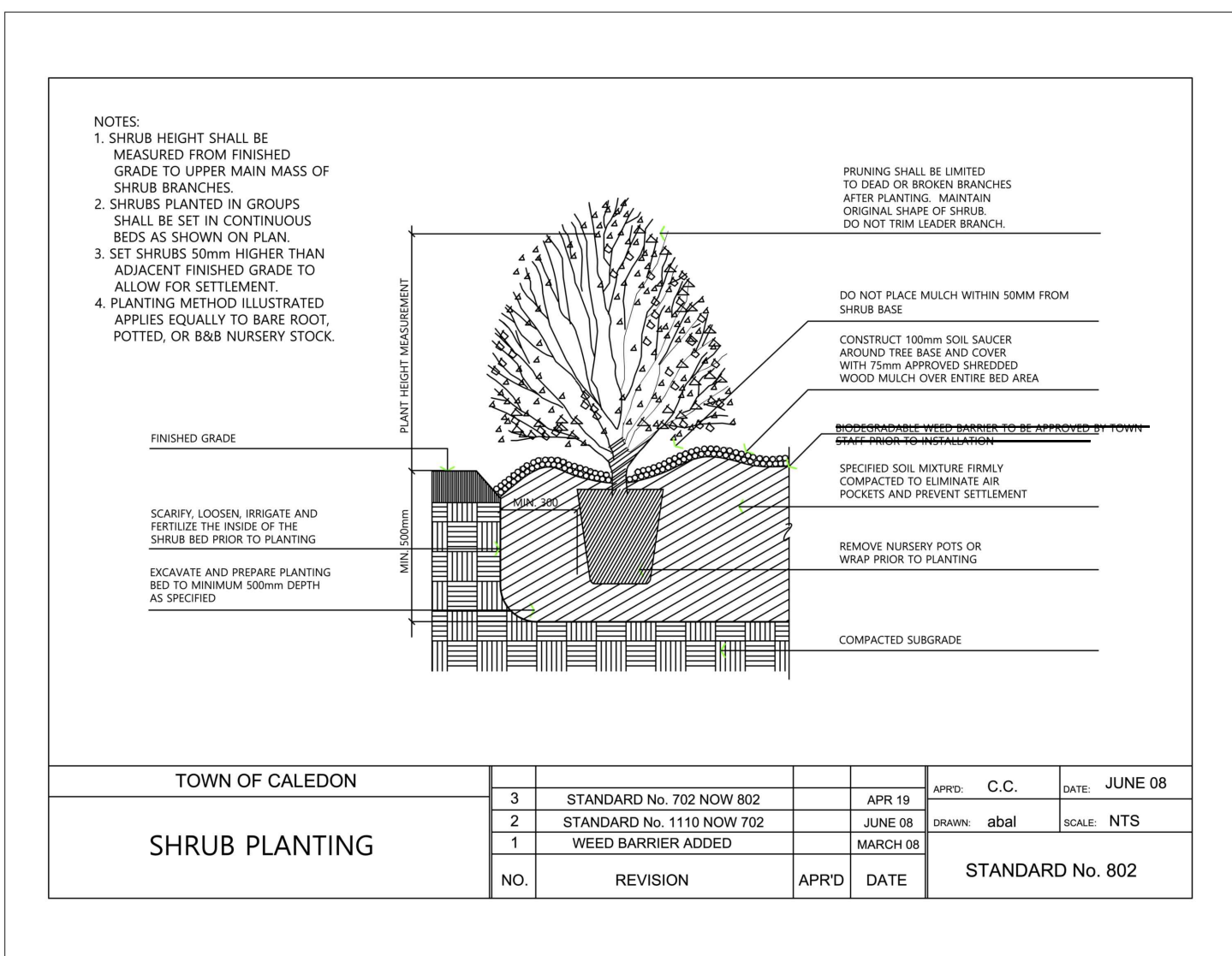
NTS



2 CONIFEROUS TREE PLANTING DETAIL

TOWN OF CALEDON STANDARD DETAIL

NTS



3 SHRUB PLANTING DETAIL

TOWN OF CALEDON STANDARD DETAIL

NTS

All information hereon to be checked and verified at the site and any discrepancies must be reported to and clarified by the landscape architect before commencing work. All drawings, specifications, details, digital information, etc., prepared by the landscape architect are instruments of service and as such are his property and must be returned at his request.



ALEXANDER BUDREVICS
& ASSOCIATES LTD.
LANDSCAPE ARCHITECTS

895 Don Mills Road, Second Tower, Suite 212
Toronto, Ontario, Canada, M3C 1W3

416.444.5201
416.444.5298

www.budrevics.com



ASSOCIATION OF LANDSCAPE ARCHITECTS
ONTARIO
MEMBER

project SP No. PRE-20-0096
PROPOSED INDUSTRIAL DEVELOPMENT
12862 DIXIE ROAD
CALEDON, ONTARIO
TRIBAL PARTNERS CANADA INC.
drawing

LANDSCAPE DETAILS

date	FEBRUARY 11, 2021	drawn	KM
scale*	AS SHOWN	file	3415 BD-1V1-210224
direction		project no.	3415
		sheet no.	BD-1