

**NATURALIZATION SPECIFICATIONS**  
ON SHEET PD-3 & PD-4

SEEDED AREAS NOT TO BE MOWED

**SWM POND 'A1' PLANTING CALCULATIONS:**

AREA OF POND BLOCK:		48,189 m <sup>2</sup>
NON-PLANTABLE AREA (road, etc. no. areas below permanent water level):		15,367 m <sup>2</sup>
TOTAL PLANTABLE AREA FOR TREES & SHRUBS:		33,192 m <sup>2</sup>

TOTAL PLANTABLE AREA	COVERAGE	TREES / SHRUBS PROVIDED	CALCULATION	AREA OF COVERAGE (m <sup>2</sup> )
33,192 m <sup>2</sup>	75%	315	256 X (25m <sup>2</sup> )	7,875
		18,960	17,560 X (11m <sup>2</sup> )	17,560
				<b>25,855 m<sup>2</sup></b> (PROVIDED COVERAGE)

**TOWN OF CALEDON**  
**PLANNING RECEIVED**  
March 28, 2024

**NATURALIZATION SEEDING**

LOCATION OF SEED TYPES ARE NOTED ON PLAN

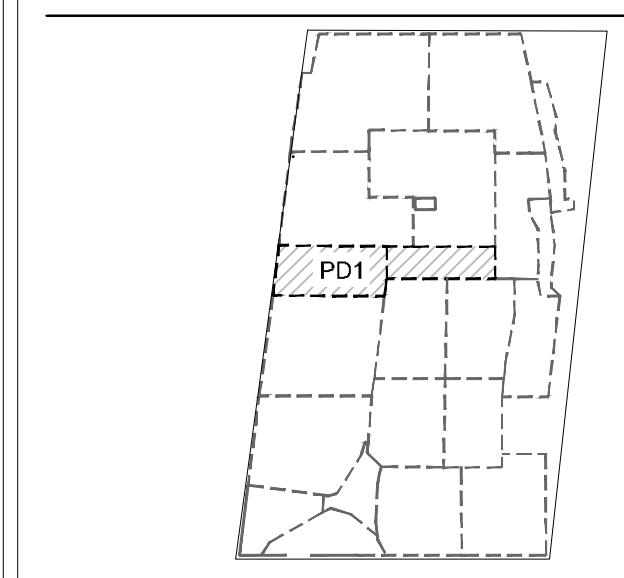
SEED WITH THE FOLLOWING SEED MIXTURES AS SUPPLIED BY ONTARIO SEED COMPANY (1-800-465-5849) OR APPROVED EQUAL

TYPE 1 UPLAND:	NURSE CROP
<b>CUSTOM UPLAND MIX</b>	ANNUAL RYE GRASS ( <i>Lolium multiflorum</i> ) SEED RATE: 28kg/ha
CANADIAN WILD RYE ( <i>Elymus canadensis</i> )	15%
BOTTLEBRUSH GRASS ( <i>Elymus hystrix</i> )	25%
VIRGINIA WILD RYE ( <i>Elymus virginicus</i> )	15%
FOX SEDGE ( <i>Carex vulpinoidea</i> )	15%
COMMON MILKWEED ( <i>Asclepias syriaca</i> )	5%
WILD BERGAMOT ( <i>Monarda fistulosa</i> )	5%
NEW ENGLAND ASTER ( <i>Aster novae-angliae</i> )	5%
EARLY GOLDENROD ( <i>Solidago juncea</i> )	5%
BROWN EYED SUSAN ( <i>Rudbeckia triloba</i> )	5%
EVENING PRIMROSE ( <i>Oenothera biennis</i> )	5%
SEED RATE: 22-25 kg/ha	

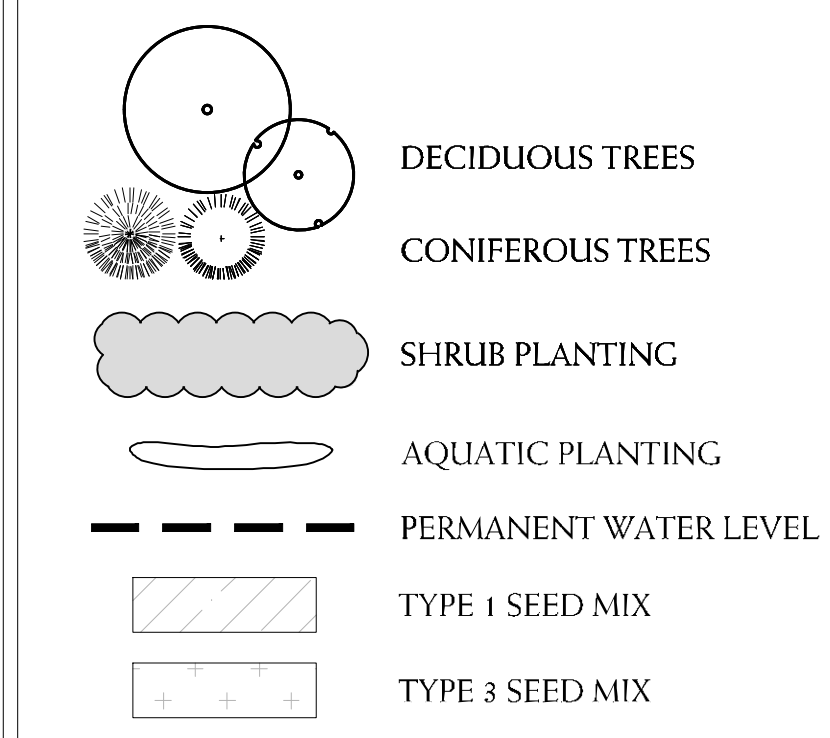
  

TYPE 2 WETLAND:	NURSE CROP
<b>OSC # 8175 - FACW WETLAND MIXTURE</b>	ANNUAL RYE GRASS ( <i>Lolium multiflorum</i> ) SEED RATE: 28kg/ha
BEBB'S SEDGE ( <i>Carex bebbii</i> )	1%
BLUE LOBELIA ( <i>Lobelia siphilitica</i> )	1%
BLUE VERVAIN ( <i>Verbena hastata</i> )	4%
BLUNT BROOM SEDGE ( <i>Carex scoparia</i> )	1%
BONSET ( <i>Eupatorium perfoliatum</i> )	1%
FOX SEDGE ( <i>Carex vulpinoidea</i> )	25%
GREEN BULRUSH ( <i>Scirpus atrovirens</i> )	8%
HEATH ASTER ( <i>Aster pilosus</i> )	1%
LURID SEDGE ( <i>Carex lurida</i> )	10%
NEW ENGLAND ASTER ( <i>Aster novae-angliae</i> )	1%
PURPLE STEMMED ASTER ( <i>Aster puniceus</i> )	1%
SOFT RUSH ( <i>Juncus effusus</i> )	1%
SPOTTED JOE PYE WEED ( <i>Eupatorium maculatum</i> )	1%
SQUARE STEMMED MONKEY FLOWER ( <i>Mimulus ringens</i> )	1%
SWAMP MILKWEED ( <i>Asclepias incarnata</i> )	1%
TALL MANNA GRASS ( <i>Glyceria grandis</i> )	1%
VIRGINIA WILD RYE ( <i>Elymus virginicus</i> )	40%
WOOLGRASS ( <i>Scirpus cyperinus</i> )	1%
SEED RATE: 22-25 kg/ha	

**REFERENCE PLAN**



**LEGEND**



**CONIFEROUS TREE PLANTING**

TYPICAL DETAIL

**TOPSOIL & TERRASEEDING**

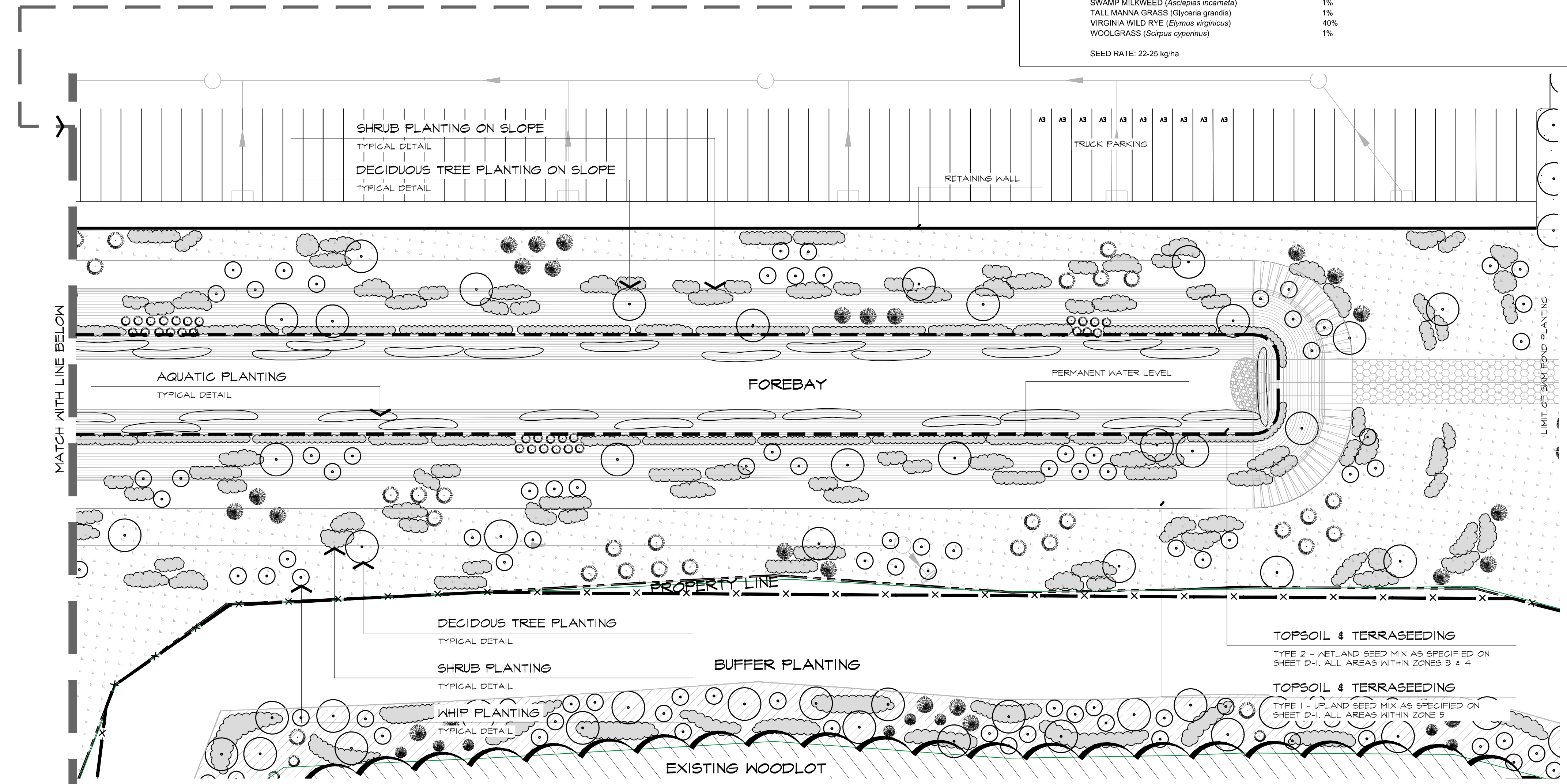
TYPE 2 - WETLAND SEED MIX AS SPECIFIED ON SHEET D-1. ALL AREAS WITHIN ZONES 3 & 4

**TOPSOIL & TERRASEEDING**

TYPE 1 - UPLAND SEED MIX AS SPECIFIED ON SHEET D-1. ALL AREAS WITHIN ZONE 5

**SUGGESTED NORTH SWM POND PLANT LIST**

BOTANICAL NAME	COMMON NAME
<b>DECIDUOUS TREES</b>	
ACER RUBRUM	RED MAPLE
ACER RUBRUM	RED MAPLE
ACER SACCHARINUM	SILVER MAPLE
ACER SACCHARINUM	SILVER MAPLE
CARYA OVATA	SHAGBARK HICKORY
CARYA OVATA	SHAGBARK HICKORY
POPULUS BALSAMIFERA	BALSAM POPLAR
POPULUS BALSAMIFERA	BALSAM POPLAR
QUERCUS BICOLOR	SWAMP WHITE OAK
QUERCUS BICOLOR	SWAMP WHITE OAK
QUERCUS MACROCARPA	BUR OAK
QUERCUS MACROCARPA	BUR OAK
QUERCUS RUBRUM	RED OAK
QUERCUS RUBRUM	RED OAK
SALIX NIGRA	BLACK WILLOW
SALIX NIGRA	BLACK WILLOW
QUERCUS BICOLOR	AMERICAN ELM
QUERCUS BICOLOR	AMERICAN ELM
<b>CONIFEROUS TREES</b>	
PICEA GLAUC	WHITE SPRUCE
PINUS STROBUS	EASTERN WHITE PINE
THUJA OCCIDENTALIS	WHITE CEDAR
<b>DECIDUOUS SHRUBS</b>	
AMELANCHIER LAEVIS	SMOOTH SERVICEBERRY
CORNUS RACEMOSA	GRAY DOGWOOD
CORNUS SERICEA	RED OSIER DOGWOOD
DIERVILLA LONICERA	BUSH HONEYSUCKLE
RHUS TYPHINA	STAGHORN SUMAC
ROSA BLANDA	MEADOW ROSE
SAMBUCUS CANADENSIS	COMMON ELDERBERRY
PHYSOCARPUS OPULIFOLIUS	COMMON NINEBARK
SALIX DISCOLOR	PUSSY WILLOW



BASE INFORMATION OBTAINED ELECTRONICALLY FROM BALDASSARRA ARCHITECTS INC. (TEL. 905-660-0722)

no.	date	version	by
V2.	MAR 12 2024	ISSUED FOR 30% LANDSCAPE PLANS - OPA / ZBA	AV/ED
V1.	FEB 24 2021	ISSUED FOR FIRST SUBMISSION	RS/LK

All information hereon to be checked and verified at the site and any discrepancies must be reported to and clarified by the landscape architect before commencing work. All drawings, specifications, details, digital information, etc., prepared by the landscape architect are instruments of service and as such are his property and must be returned at his request.

ALEXANDER BUDREVICS & ASSOCIATES, LANDSCAPE ARCHITECTS  
885 Don Mills Road, Second Tower, Suite 212  
Toronto, Ontario, Canada, M3C 1W3  
416.444.5201  
www.budrevics.com

project SP No. PRE-20-0096  
**PROPOSED INDUSTRIAL DEVELOPMENT**  
12862 & 12668 DIXIE ROAD  
CALEDON, ONTARIO  
QUADREAL PROPERTY GROUP & TRIBAL PARTNERS CANADA INC.

**SWM POND 'A' PLANTING PLAN**

date	JANUARY 4, 2021	drawn	KM
scale*	1:500	file	3415 PD1 V2-240312
direction		project no.	3415
		sheet no.	PD-1

\*NOTED SCALE IS APPLICABLE ONLY WHEN PRINTED ON ARCH D (24"x36") SIZE SHEET