

DRAFT PLAN OF STANDARD CONDOMINIUM OF  
PART OF BLOCK 1, PLAN 43M-1744  
TOWN OF CALEDON  
REGIONAL MUNICIPALITY OF PEEL

SCALE 1:400  
10m 5m 0 10m 20m 30m 40m

R-PE SURVEYING LTD., O.L.S.

**METRIC**  
DISTANCES SHOWN ON THIS PLAN ARE IN  
METRES AND CAN BE CONVERTED TO FEET BY DIVIDING BY 0.3048.

**LEGEND:**

- Y DENOTES EXCLUSIVE USE YARD OPEN STORAGE  
L DENOTES EXCLUSIVE USE LOADING  
H/C DENOTES HANDICAP SPACE  
P.I.N. DENOTES PROPERTY IDENTIFIER NUMBER  
SCP DENOTES SPECIFIED CONTROL POINTS  
S OR So DENOTES EXCLUSIVE USE SIGN

PORTIONS OF THE COMMON ELEMENTS WITH THE DESIGNATION "S", "So", "L" AND "Y"  
ARE ALLOCATED FOR THE EXCLUSIVE USE OF THE OWNERS OF UNITS AS DESCRIBED IN SCHEDULE F.

**SURVEYOR'S CERTIFICATE**

I HEREBY CERTIFY THAT THE BOUNDARIES OF THE LANDS TO BE SUBDIVIDED  
AND THEIR RELATIONSHIP TO THE ADJOINING LANDS ARE ACCURATELY  
AND CORRECTLY SHOWN.

DATE: APRIL 22, 2022.

*Y. WAHBA*  
Y. WAHBA  
ONTARIO LAND SURVEYOR

**OWNER'S CERTIFICATE**

I HEREBY AUTHORIZE R-PE SURVEYING LTD. TO PREPARE AND SUBMIT  
THIS DRAFT PLAN OF STANDARD CONDOMINIUM TO THE TOWN OF  
CALEDON FOR APPROVAL.

**LICENZA PARK CONSTRUCTION CORP.**

DATE: APR. 21, 2022

*[Signature]*  
AUTHORIZED SIGNING OFFICER  
I HAVE THE AUTHORITY TO BIND THE CORPORATION

**LAND USE**

SITE AREA : 26714.79 SQ. M. (2.67 HA)  
GROSS FLOOR AREA: 9303.90 SQ.M

PARKING PROVIDED: 139 SPACES  
(INCLUDES 9 HANDICAP SPACES)

UNITS:  
INDUSTRIAL UNITS:  
WAREHOUSE UNITS:  
TOTAL UNITS:

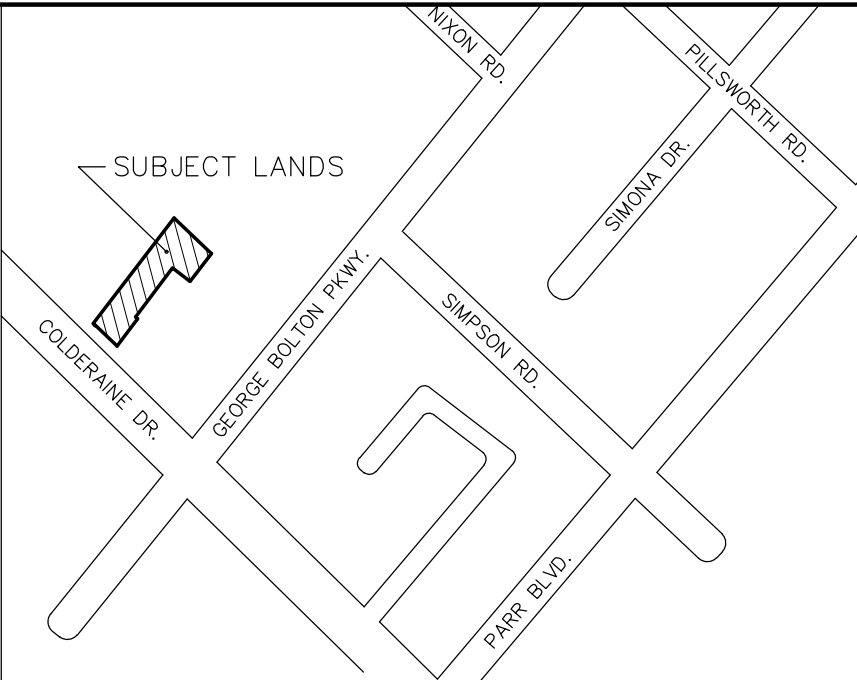
NOTE: ALL LAND USE INFORMATION ARE PROVIDED BY NATALE ARCHITECT INC.  
(LAST REVISED ON FEBRUARY 22, 2022).

**ADDITIONAL INFORMATION REQUIRED  
UNDER SECTION 51 (17) OF THE  
PLANNING ACT.**

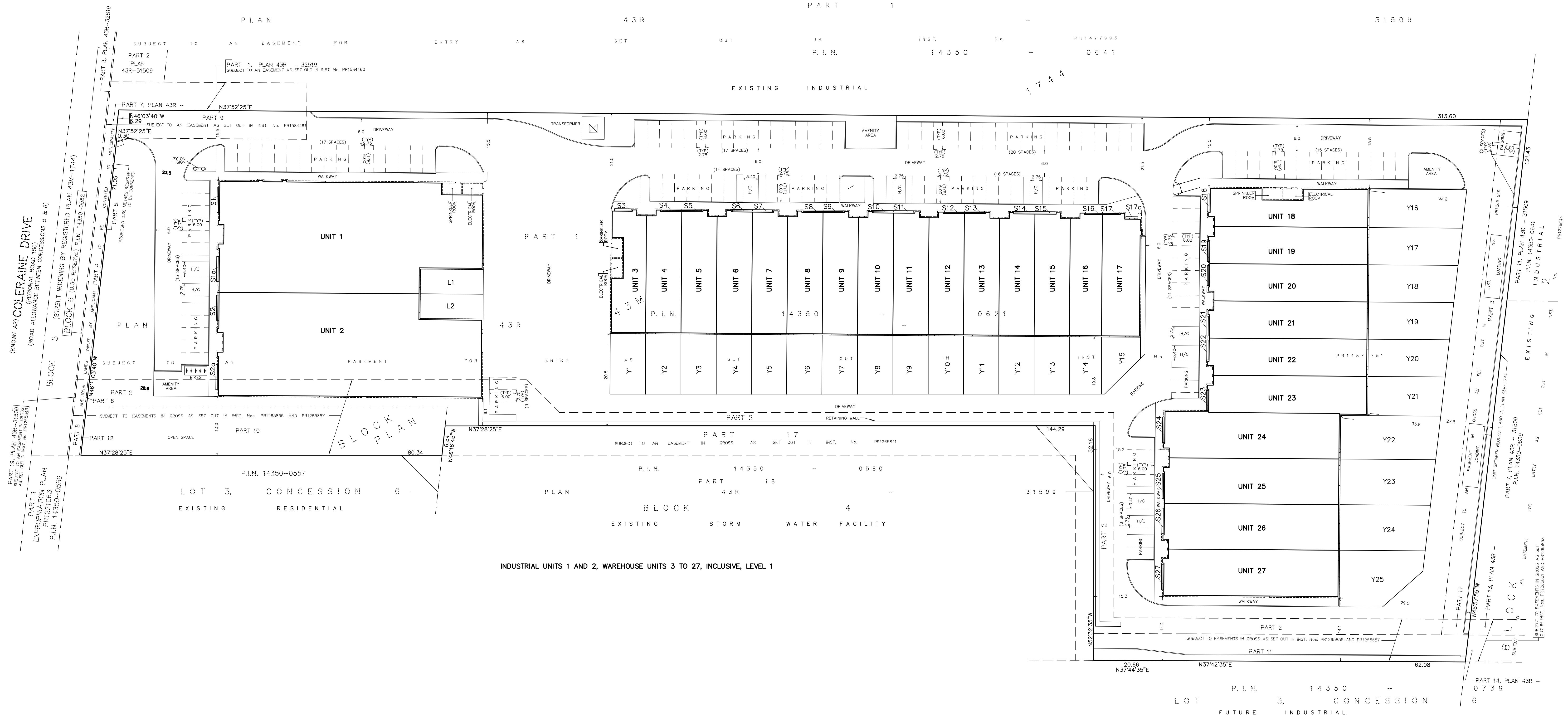
- b) SEE PLAN  
c) SEE KEY PLAN  
d) INDUSTRIAL  
e) SEE PLAN  
f) SEE PLAN  
g) SEE PLAN AND KEY PLAN  
h) PIPED WATER  
i) SEE SOIL REPORT  
j) SEE APPROVED SITE PLAN AND GRADING PLAN  
k) FULLY SERVICED  
l) SEE PLAN

**TOWN OF CALEDON  
PLANNING  
RECEIVED**

May 12, 2022



KEY MAP (NOT TO SCALE)



**rpe** R-PE SURVEYING LTD.  
ONTARIO LAND SURVEYORS  
643 Chrislea Road, Suite 7  
Woodbridge, Ontario L4L 8A3  
Tel.(416)635-5000 Fax (416)635-5001  
Tel.(905)264-0881 Fax (905)264-2099  
Website: www.r-pe.ca  
DRAWN: E.G./ Y.B./I.A.A. CHECKED: Y.W.  
JOB No. 17-105  
CAD FILE No. 17-105-DR