

**GLAZING TYPES:**

CURTAIN WALL SYSTEM - VISION GLAZING (FG)	GL-1
EXTERIOR WINDOW CLEAR ANODIZED THERMALLY BROKEN ALUMINUM CURTAIN WALL WINDOW WITH FIXED HERMETICALLY SEALED DOUBLE GLAZED UNITS. OUTER LIGHT TO BE GREY TINTED. INNER UNITS TO BE CLEAR GLAZING WITH LOW 'e' COATING (U0.35)	
CURTAIN WALL SYSTEM - VISION GLAZING (FG)	GL-2
SIMILAR TO GL-1 EXCEPT REPLACE W/ FIXED DOUBLE GLAZED REFLECTIVE UNITS	
CURTAIN WALL SYSTEM - SPANDREL GLAZING (SG)	GL-3
SPANDREL GLAZING (SG) EXTERIOR WINDOW - INTERIOR CLEAR ANODIZED THERMALLY BROKEN ALUMINUM CURTAIN WALL WINDOW WITH FIXED HERMETICALLY SEALED DOUBLE GLAZED UNITS-OUTER LIGHT TO BE GREY TINTED. 75mm THICK GLASS FIBRE INSULATION (MIN. 900) CWV GALVANIZED STEEL BACK PAN.	
EXTERIOR WALL CONSTRUCTION - PCF - WHITE	WI
275mm THICK INSULATED PRECAST CONC. (SMOOTH) PANEL W/ 100mm THICK POLYSTYRENE INSULATION R-24 VALUE. (8-4) 50mm OUTER WITH 75mm CONCRETE AND INNER W/ 100mm THICK CONCRETE JOINTS SHALL BE REINFORCED (3 STAGE JOINTS) W/ INNER AND OUTER BACKER RODS AND CAULKING. NOTE: ALL WALL PLATES SHALL BE FULLY CAULKED & SEALED	

**SHEET KEY LEGEND:**

PCA	PRECAST WALL PANELS (ARCHITECTURAL)-DARK GREY PRECAST CONC. W/ SMOOTH FINISH-INSULATED
PCA-1	PRECAST WALL PANELS (ARCHITECTURAL)-LIGHT GREY PRECAST CONC. W/ SMOOTH FINISH-INSULATED
GL-3	TINTED SPANDREL GLAZING - BLUE
GL-1	FIXED DOUBLE GLAZED CLEAR VISION GLAZING
GL-2	FIXED DOUBLE GLAZED REFLECTIVE UNITS
GL-1	TEMPERED DOUBLE GLAZED CLEAR VISION GLAZING
HMD	INSULATED HOLLOW METAL DOOR
OHD	INSULATED OVER HEAD DOOR
PMF	PREFINISHED METAL FLASHING
EC	EXPOSED CONCRETE
RV	CONTINUOUS RECESSED REVEAL
ACP	ARCHITECTURAL FABRIC CANOPY
LF	WALL MOUNTED LED SCENE-FULL CUT-OFF DISTRIBUTION LIGHTING

7			
6			
5			
4	RE ISSUED AS PER SPA COMMENTS TOWN OF CALEDON	NOV. 21/21	GN
3	ISSUED FOR CLIENT REVIEW	NOV. 25/21	GN
2	RE ISSUED FOR SPA COMMENTS	NOV. /21	GN
1	ISSUED FOR REVIEW REVIEW AND PRICING	MAY 21/21	GN
NO.	REVISIONS	DATE	BY:

\*ALL DRAWINGS, SPECIFICATIONS AND RELATED DOCUMENTS ARE THE COPYRIGHT PROPERTY OF THE ARCHITECT AND MUST BE RETURNED UPON REQUEST. REPRODUCTION OF DRAWINGS, SPECIFICATIONS AND RELATED DOCUMENTS IN PART OR WHOLE IS FORBIDDEN WITHOUT THE ARCHITECT'S WRITTEN PERMISSION. DRAWINGS SHALL NOT BE SCALED.

CONTRACTOR MUST CHECK AND VERIFY ALL DIMENSIONS ON THE JOB.

**NATALE ARCHITECT INC.**  
Suite 218, 1255 Coleraine Drive, Caledon, Ontario  
Tel: (416) 259-1220 Fax: (416) 259-1220

**ONTARIO ASSOCIATION OF ARCHITECTS**  
Gina Natale  
Licence 4188  
NOV. 21/21

**CLIENT:**  
**HISTORY HILL GROUP**

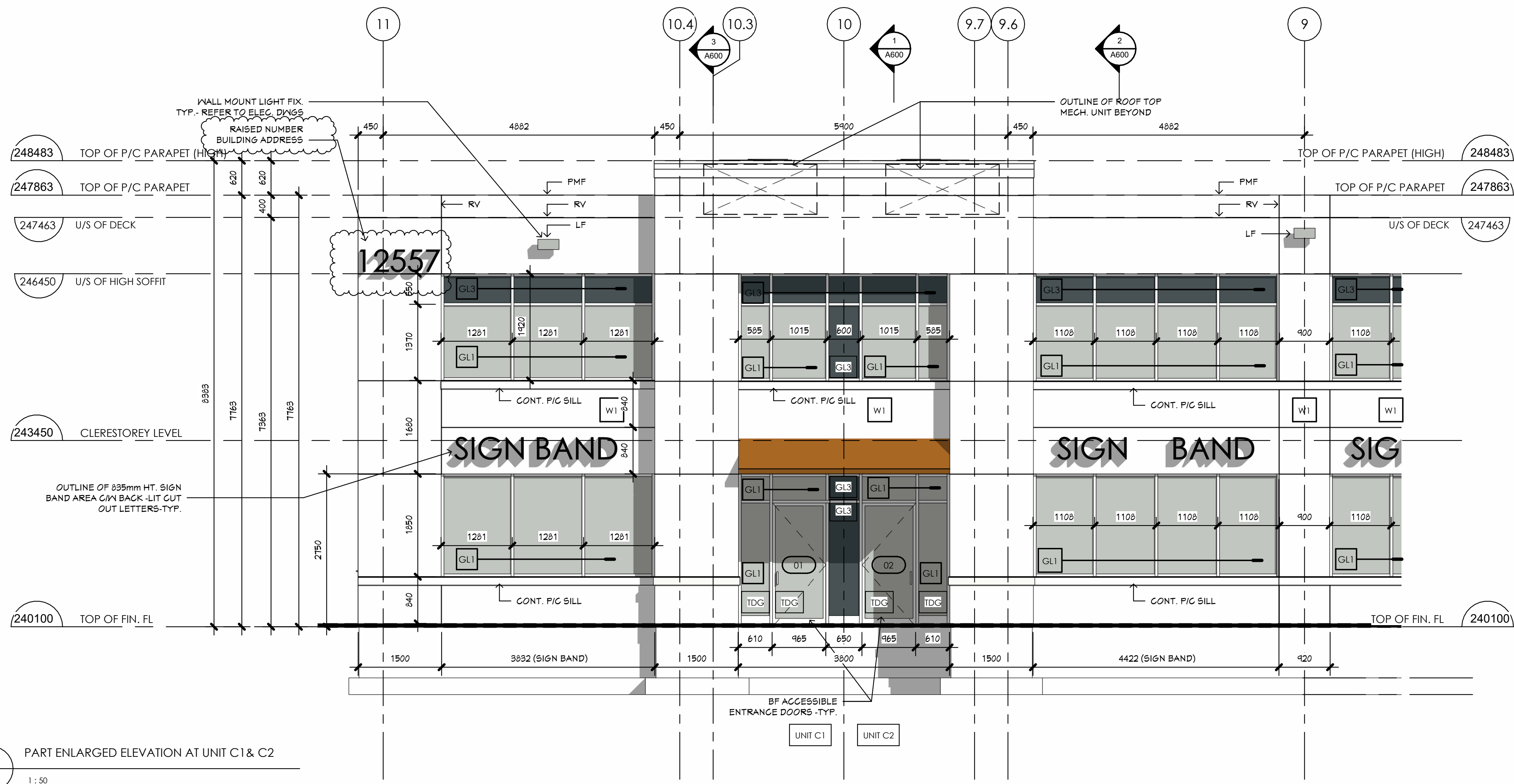
**PROJECT:**  
PROJECT: 1 STOREY INDUSTRIAL BUILDING 'C'  
12557 COLERAINE DRIVE, CALEDON, ONTARIO

**DRAWING:**  
BUILDING ELEVATIONS

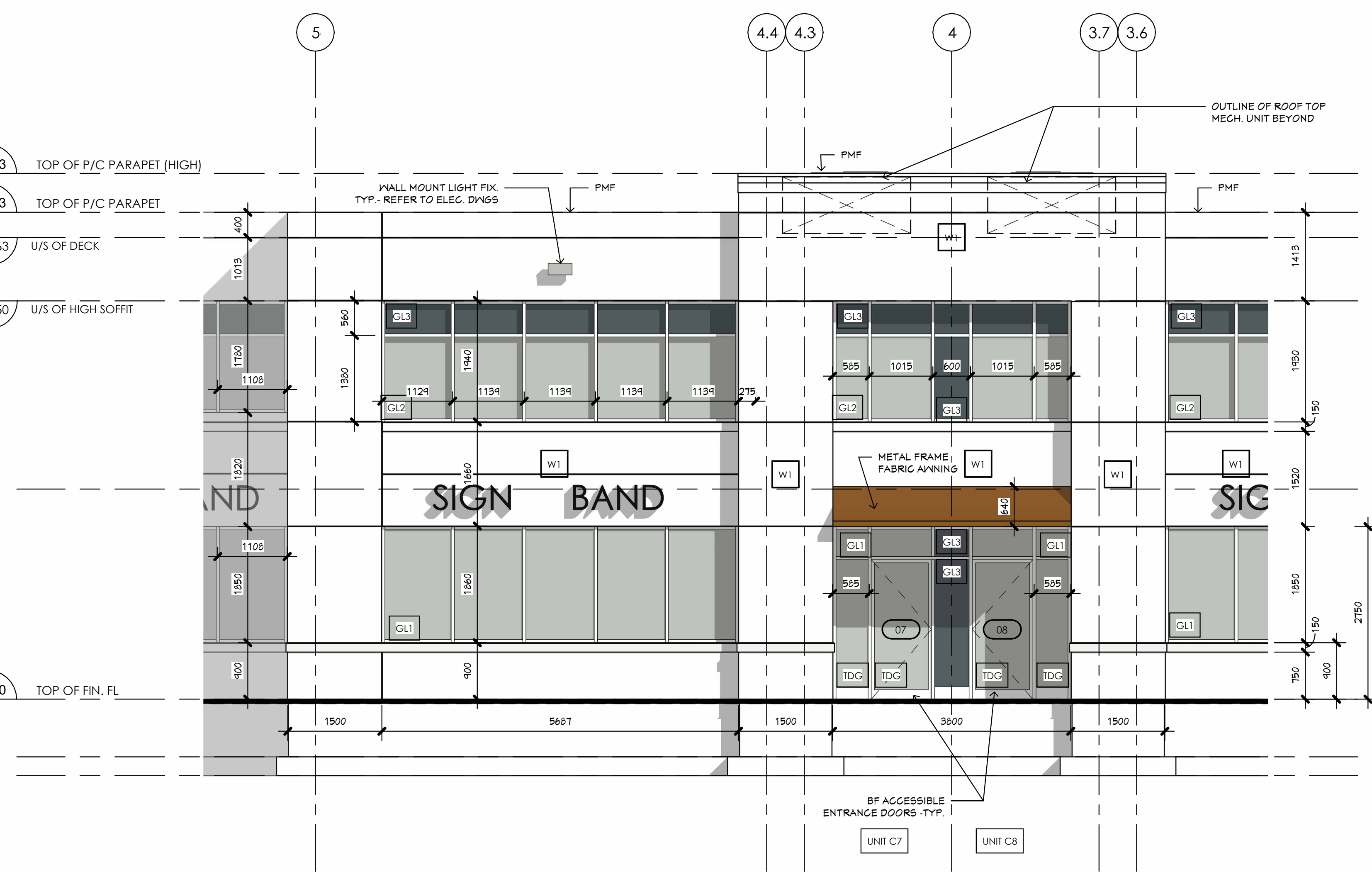
THIS DRAWING SHALL NOT BE USED FOR CONSTRUCTION PURPOSES UNLESS CORRECTED BY:

DRAWN BY:	nm	CHECKED BY:	GN
DATE:	JULY 2015	SCALE:	AS NOTED
PROJECT NO.:		DRAWING NO.:	

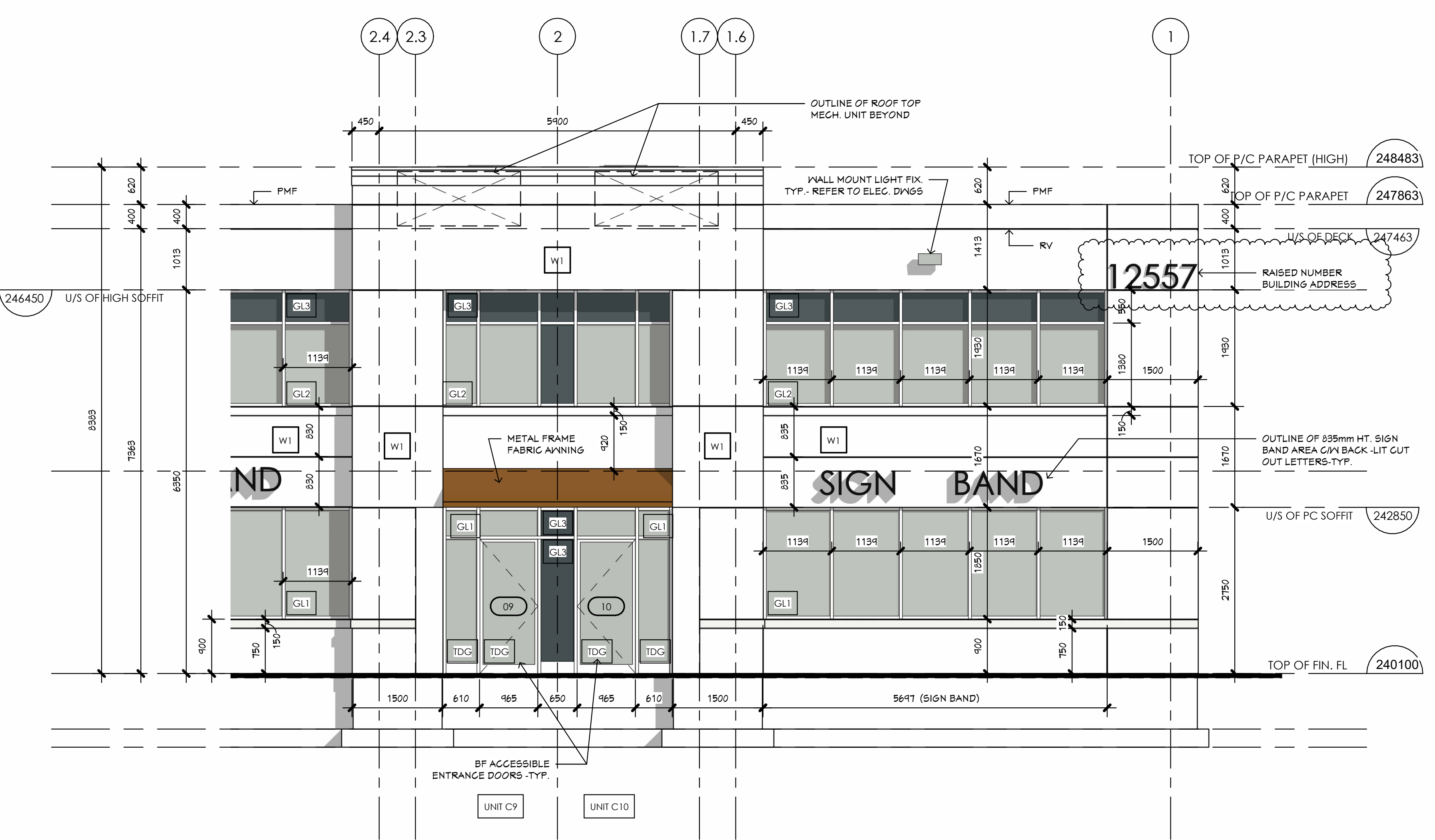
**17-01** **A500 (A3)**



3 PART ENLARGED ELEVATION AT UNIT C1 & C2  
A501 1:50



2 PART ENLARGED ELEVATION AT UNIT C7 & C8  
A501 1:50



1 PART ENLARGED ELEVATION AT TYP. ENTRANCE FEATURE  
A501 1:50

GLAZING TYPES:

<p>CURTAIN WALL SYSTEM - VISION GLAZING (FGU) EXTERIOR WINDOW CLEAR ANODIZED THERMALLY BROKEN ALUMINUM CURTAIN WALL WINDOW WITH FIXED HERMETICALLY SEALED DOUBLE GLAZED UNITS. OUTER LIGHT TO BE GREY TINTED, INNER UNITS TO BE CLEAR GLAZING WITH LOW 'E' COATING (U0.35)</p>	GL-1
<p>CURTAIN WALL SYSTEM - VISION GLAZING (FGU) SIMILAR TO GL-1 EXCEPT REPLACE W/ FIXED DOUBLE GLAZED REFLECTIVE UNITS</p>	GL-2
<p>CURTAIN WALL SYSTEM - SPANDREL GLAZING (SG) SPANDREL GLAZING (SG) EXTERIOR WINDOW - INTERIOR CLEAR ANODIZED THERMALLY BROKEN ALUMINUM CURTAIN WALL WINDOW WITH FIXED HERMETICALLY SEALED DOUBLE GLAZED UNITS. OUTER LIGHT TO BE GREY TINTED, 75mm THICK GLASS FIBRE INSULATION (MIN. 600) CMV GALVANIZED STEEL BACK PAH</p>	GL-3
<p>EXTERIOR WALL CONSTRUCTION - PCF - WHITE 275mm THICK INSULATED PRECAST CONC. (SMOOTH) PANELS W/ 100mm THICK POLYSTYRENE INSULATION R-24 VALUE. (8-6.25mm) OUTER W/ 75mm CONCRETE AND INNER W/ 100mm CONCRETE. JOINTS SHALL BE REINFORCED (2 STAGE JOINTS) W/ INNER AND OUTER BACKER RODS AND CAULKING. NOTE: ALL WALL PLATES SHALL BE FULLY CAULKED &amp; SEALED</p>	W1

SHEET KEY LEGEND:

PCA	PRECAST WALL PANELS (ARCHITECTURAL)-DARK GREY PRECAST CONC. W/ SMOOTH FINISH-INSULATED
PCA-1	PRECAST WALL PANELS (ARCHITECTURAL)-LIGHT GREY PRECAST CONC. W/ SMOOTH FINISH-INSULATED
T&G	TINTED SPANDREL GLAZINGS - BLUE
FG	FIXED DOUBLE GLAZED CLEAR VISION GLAZING
FGR	FIXED DOUBLE GLAZED REFLECTIVE UNITS
TDG	TEMPERED DOUBLE GLAZED CLEAR VISION GLAZING
IMD	INSULATED HOLLOW METAL DOOR
OHD	INSULATED OVER HEAD DOOR
PMF	PREFINISHED METAL FLASHING
EC	EXPOSED CONCRETE
RV	CONTINUOUS RECESSED REVEAL
ALP	WALL MOUNTED LED SCENE-FULL CUT-OFF DISTRIBUTION LIGHTING

7			
6			
5			
4	RE ISSUED AS PER SPA COMMENTS TOWN OF CALEDON	NOV. 21/21	GN
3	ISSUED FOR CLIENT REVIEW	MAY 25/21	GN
2	RE ISSUED FOR SPA COMMENTS	NOV. /21	GN
1	ISSUED FOR REVIEW REVIEW AND PRICING	MAY 25/21	GN
NO.	REVISIONS	DATE	BY:

"ALL DRAWINGS, SPECIFICATIONS AND RELATED DOCUMENTS ARE THE COPYRIGHT PROPERTY OF THE ARCHITECT AND MUST BE RETURNED UPON REQUEST. REPRODUCTION OF DRAWINGS, SPECIFICATIONS AND RELATED DOCUMENTS IN PART OR WHOLE IS FORBIDDEN WITHOUT THE ARCHITECT'S WRITTEN PERMISSION.  
DRAWINGS SHALL NOT BE SCALED.

CONTRACTOR MUST CHECK AND VERIFY ALL DIMENSIONS ON THE JOB.

**NATALE ARCHITECT INC.**  
Suite 218, 1400 Dundas Street West, Toronto, Ontario M6J 1B5  
Tel: (416) 223-1200 Fax: (416) 223-1202

**ONTARIO ASSOCIATION OF ARCHITECTS**  
NATALE ARCHITECT INC. LICENCE 4186 NOV. 21/21

CLIENT:  
**HISTORY HILL GROUP**

PROJECT:  
PROJECT 1 STOREY INDUSTRIAL BUILDING 'C'  
12557 COLERAINE DRIVE, CALEDON, ONTARIO

DRAWING:  
ENLARGED ELEVATIONS

THIS DRAWING SHALL NOT BE USED FOR CONSTRUCTION PURPOSES UNLESS CORRECTED BY:

DRAWN BY:	nm	CHECKED BY:	GN
DATE:	JULY 2015	SCALE:	AS NOTED
PROJECT NO.:		DRAWING NO.:	

17-01 A501