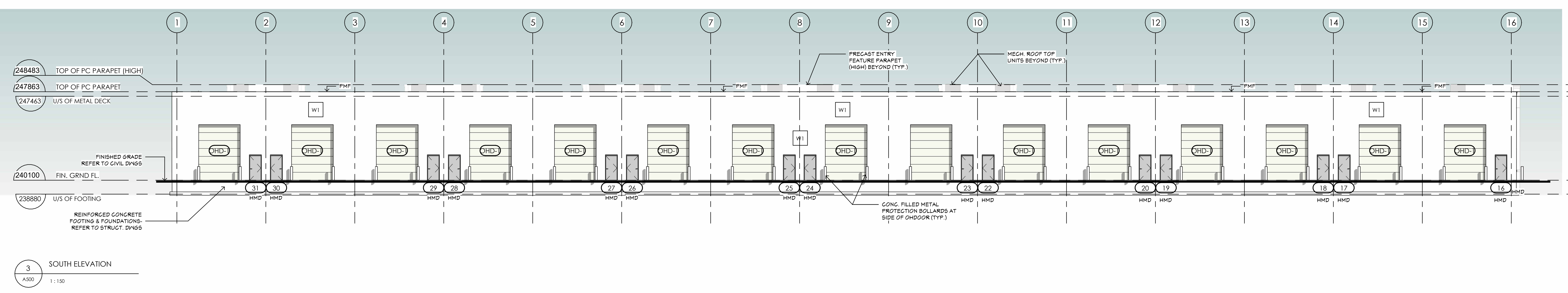
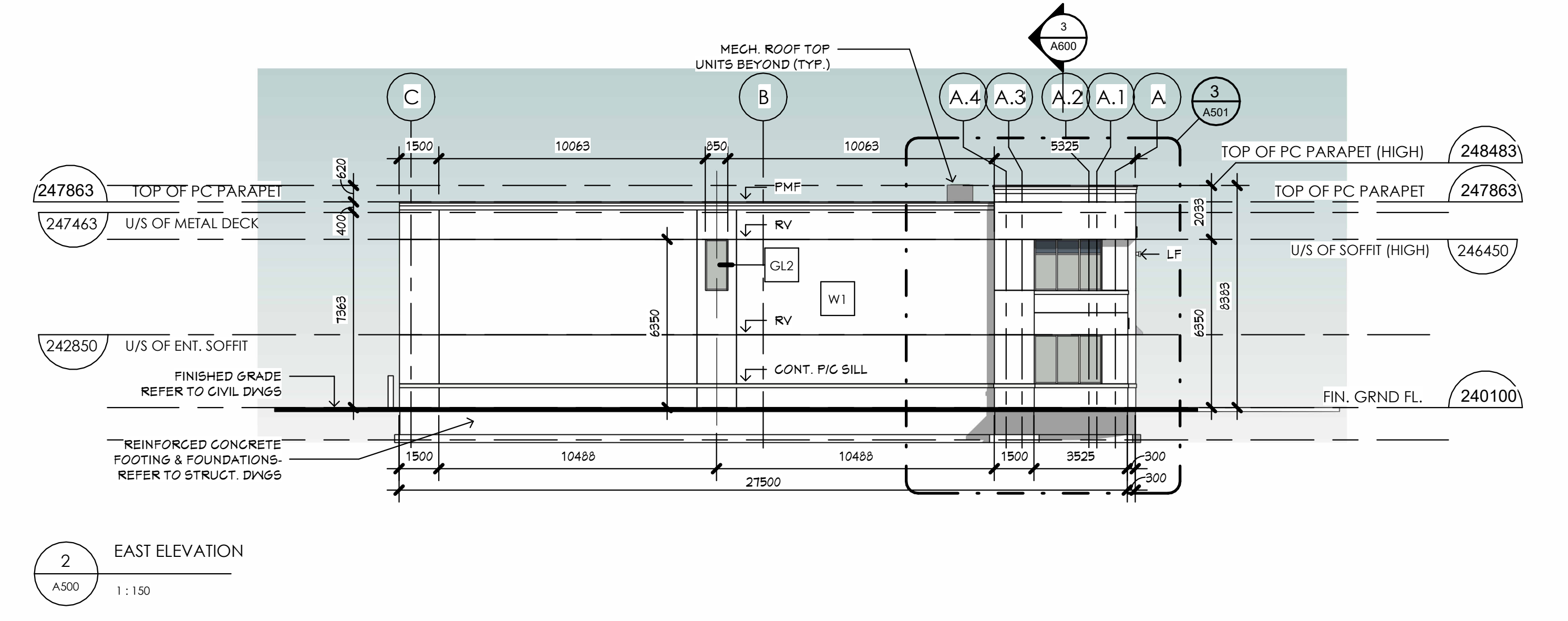
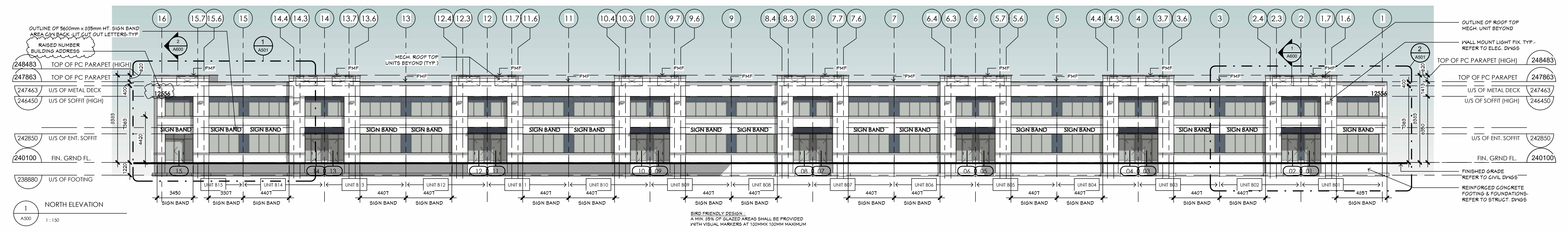
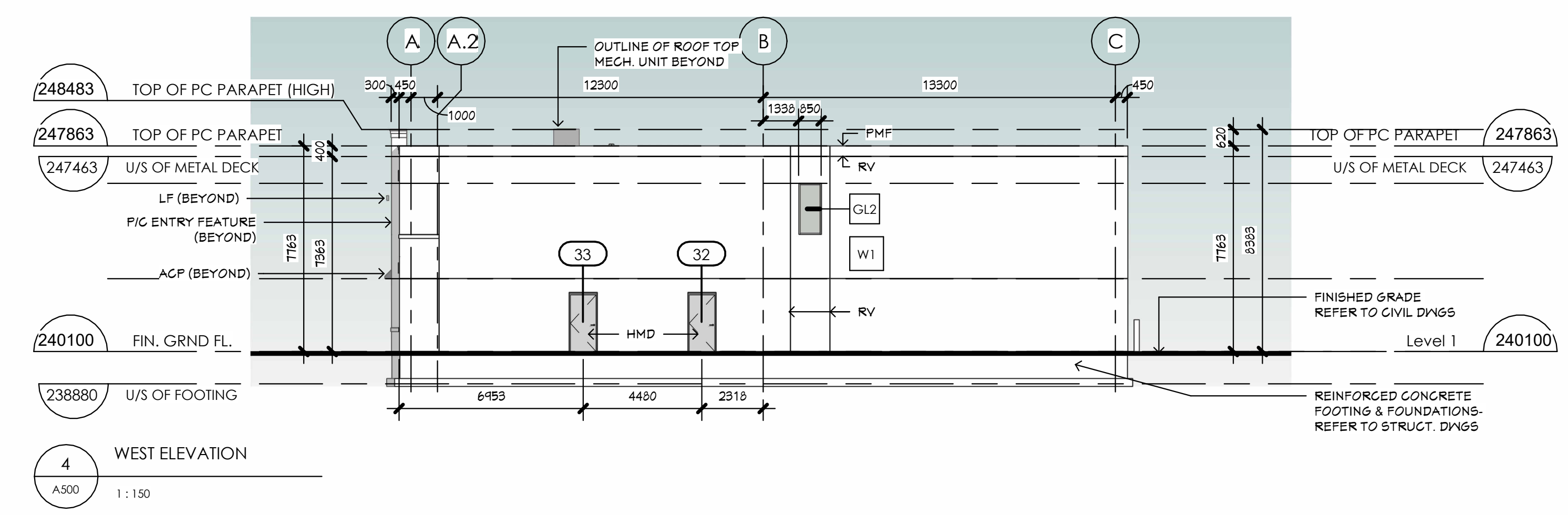


May 12, 2022



**SHEET KEY LEGEND:**

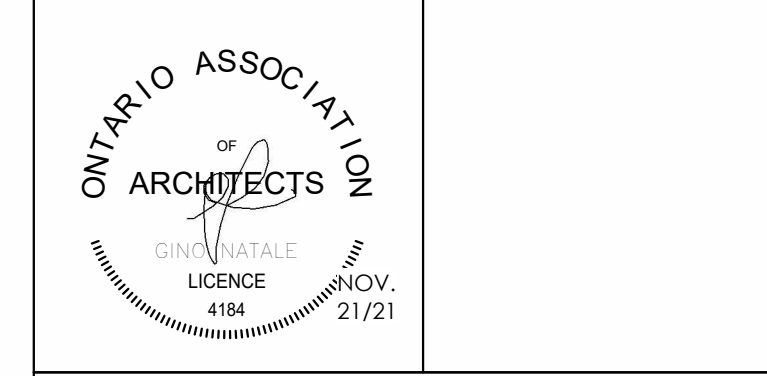
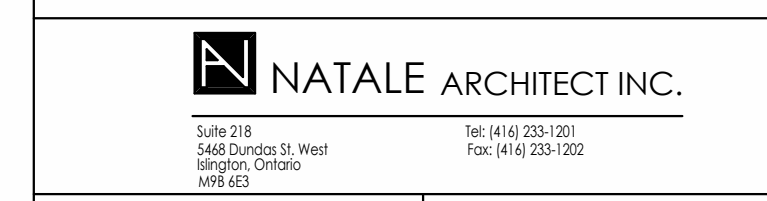
- W1 PRECAST WALL PANELS (ARCHITECTURAL)-DARK GREY PRECAST CONC. W/ SMOOTH-FINISH-INSULATED
- PCA-1 PRECAST WALL PANELS (ARCHITECTURAL)-LIGHT GREY PRECAST CONC. W/ SMOOTH-FINISH-INSULATED
- GL-3 TINTED SPANDREL GLAZING - BLUE
- GL-1 FG FIXED DOUBLE GLAZED CLEAR VISION GLAZING
- GL-2 FGR FIXED DOUBLE GLAZED REFLECTIVE UNITS
- GL-1 TDG TEMPERED DOUBLE GLAZED CLEAR VISION GLAZING
- HMD INSULATED HOLLOW METAL DOOR
- OHD INSULATED OVER HEAD DOOR
- PMF PREFINISHED METAL FLASHING
- EC EXPOSED CONCRETE
- RV CONTINUOUS RECESSED REVEAL
- ACP ARCHITECTURAL FABRIC CANOPY
- LF WALL MOUNTED LED SCONCE-FULL CUT-OFF DISTRIBUTION LIGHTING

**GLAZING TYPES:**

- GL-1 CURTAIN WALL SYSTEM - VISION GLAZING (JEG) EXTERIOR WINDOW CLEAR ANODIZED THERMALLY BROKEN ALUMINUM CURTAIN WALL WINDOW WITH FIXED HERMETICALLY SEALED DOUBLE GLAZED UNITS - CLEAR LIGHT TO BE GREY TINTED, INNER UNITS TO BE CLEAR GLAZING WITH LOW 'e' COATING (U0.35)
- GL-2 CURTAIN WALL SYSTEM - VISION GLAZING (JEG) SIMILAR TO GL-1 EXCEPT REPLACE W/ FIXED DOUBLE GLAZED REFLECTIVE UNITS
- GL-3 CURTAIN WALL SYSTEM - SPANDREL GLAZING (JEG) SPANDREL GLAZING (SG) EXTERIOR WINDOW - INTERIOR CLEAR ANODIZED THERMALLY BROKEN ALUMINUM CURTAIN WALL WINDOW WITH FIXED HERMETICALLY SEALED DOUBLE GLAZED UNITS - OUTER LIGHT TO BE GREY TINTED, 75mm THICK GLASS FIBRE INSULATION (MIR-920) C/W GALVANIZED STEEL BACK-PAN
- W1 EXTERIOR WALL CONSTRUCTION - PCF - WHITE 27.5mm THICK INSULATED PRECAST CONC. (SMOOTH) PANEL W/ 100mm THICK POLYSTY INSULATION R-24 VALUE (R-4.22) OUTER WYTHE FF 75mm CONCRETE AND INNER WYTHE OF 100mm CONCRETE. JOINTS SHALL BE RAINSCREEN (2 STAGE JOINTS) W/ INNER AND OUTER BACKER RODS AND CAULKING. NOTE: ALL WALL PLATES SHALL BE FULLY CAULKED & SEALED

7			
6			
5			
4	RE ISSUED AS PER SPA COMMENTS TOWN OF CALEDON	NOV. 21/21	GN
3	ISSUED FOR CLIENT REVIEW	MAY 25/21	GN
2	RE ISSUED FOR SPA COMMENTS	NOV. /21	GN
1	ISSUED FOR REVIEW REVIEW AND PRICING	MAY 25/21	GN
NO.	REVISIONS	DATE	BY:

\*ALL DRAWINGS, SPECIFICATIONS AND RELATED DOCUMENTS ARE THE COPYRIGHT PROPERTY OF THE ARCHITECT AND MUST BE RETURNED UPON REQUEST. REPRODUCTION OF DRAWINGS, SPECIFICATIONS AND RELATED DOCUMENTS IN PART OR WHOLE IS FORBIDDEN WITHOUT THE ARCHITECT'S WRITTEN PERMISSION.  
DRAWINGS SHALL NOT BE SCALED.  
CONTRACTOR MUST CHECK AND VERIFY ALL DIMENSIONS ON THE JOB.



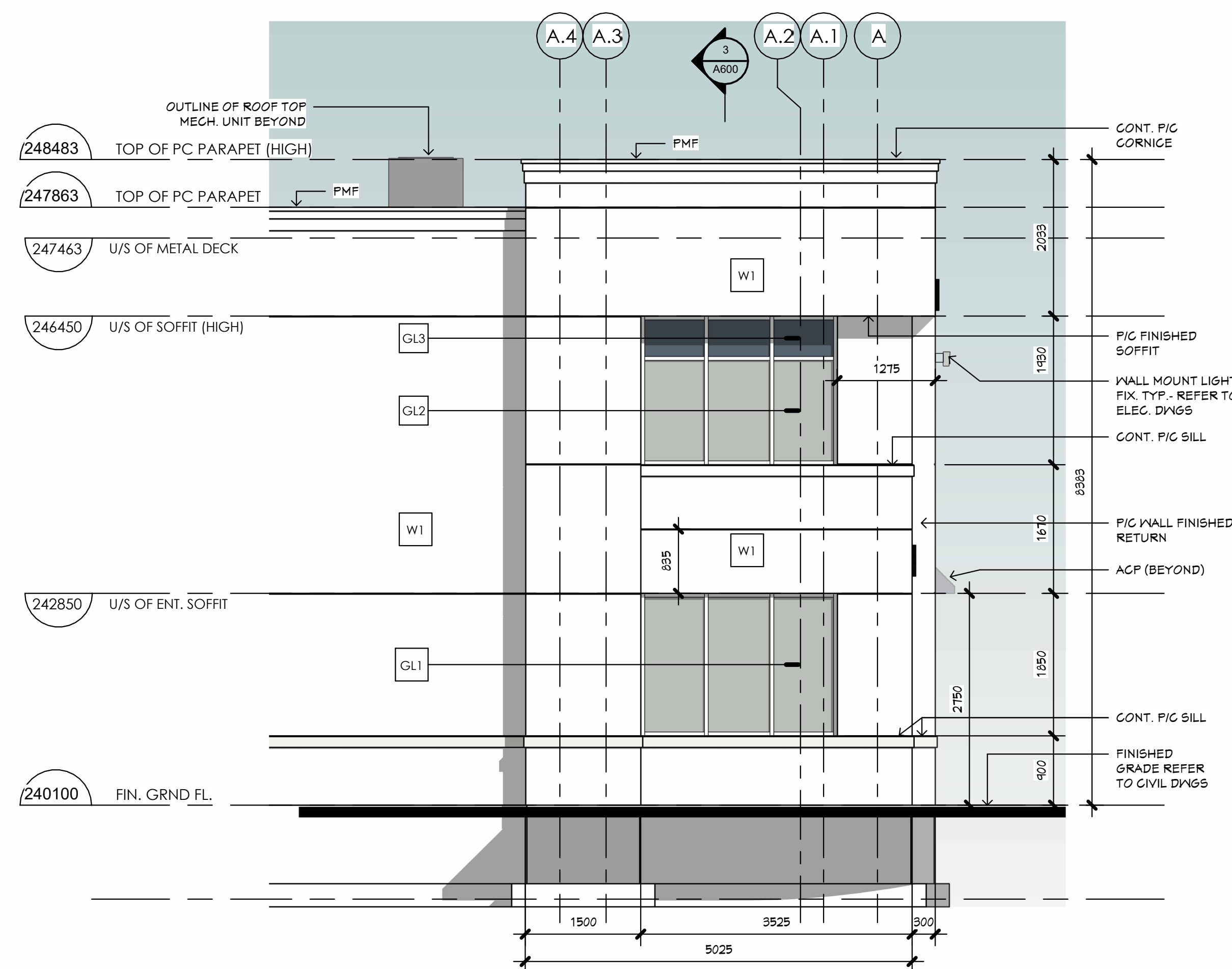
CLIENT:  
**HISTORY HILL GROUP**

PROJECT:  
PROPOSED 1 STOREY INDUSTRIAL BUILDING 'B'  
12556 COLERAINE DRIVE, CALEDON, ONTARIO

DRAWING:  
ELEVATIONS

THIS DRAWING SHALL NOT BE USED FOR CONSTRUCTION PURPOSES UNLESS CORRECTED BY:  
DRAWN BY: nm CHECKED BY: GN  
DATE: JULY 2015 SCALE: AS NOTED  
PROJECT NO.: DRAWING NO.:

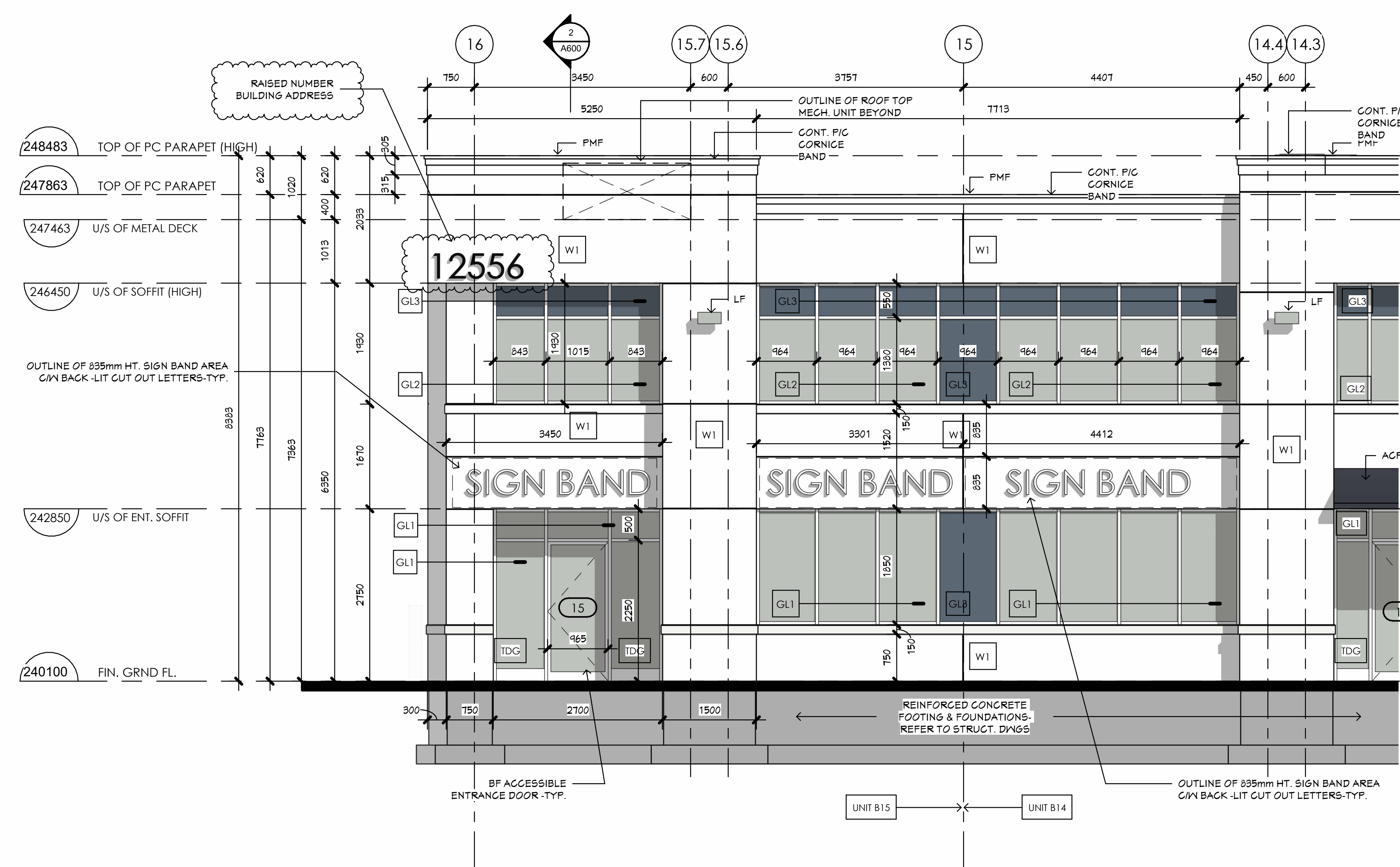
17-01 A500 (A3)



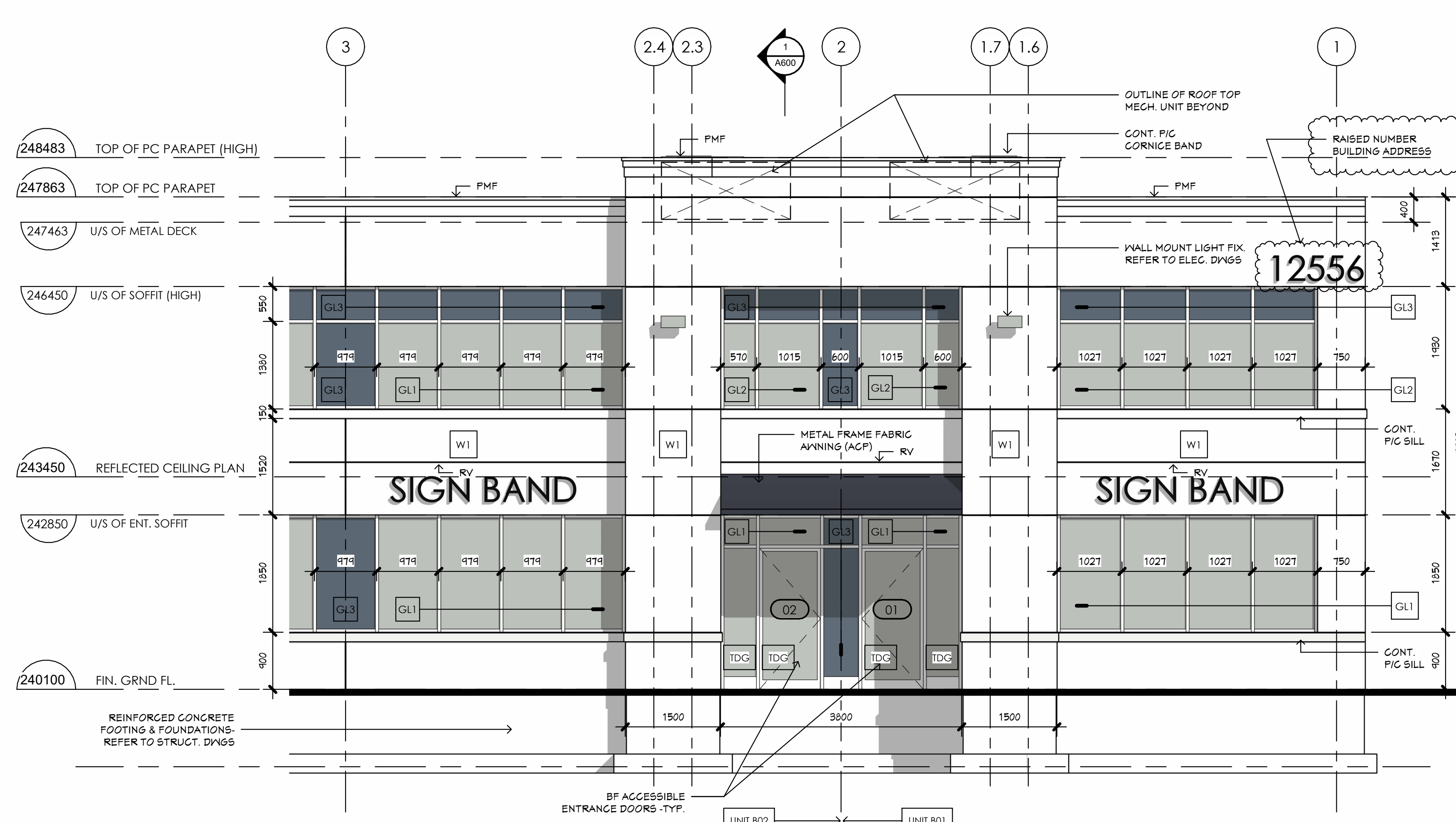
3 PART ENLARGED EAST ELEVATION AT UNIT B15 ENTRY FEATURE  
AS01 1:50



PART 2-POINT PERSPECTIVE ( LOOKING SOUTH - EAST) UNIT B15 - CORNER ENTRY FEATURE



1 PART ENLARGED NORTH ELEVATION AT UNIT B15 ENTRY FEATURE  
AS01 1:50



2 PART ENLARGED NORTH ELEVATION AT TYPICAL ENTRY FEATURE  
AS01 1:50

7			
6			
5			
4	RE ISSUED AS PER SPA COMMENTS TOWN OF CALEDON	NOV. 21/21	GN
3	ISSUED FOR CLIENT REVIEW	NOV. 25/21	GN
2	RE ISSUED FOR SPA COMMENTS	NOV. /21	GN
1	ISSUED FOR REVIEW REVIEW AND PRICING	MAY 25/21	GN
NO.	REVISIONS	DATE	BY:

\*ALL DRAWINGS, SPECIFICATIONS AND RELATED DOCUMENTS ARE THE COPYRIGHT PROPERTY OF THE ARCHITECT AND MUST BE RETURNED UPON REQUEST. REPRODUCTION OF DRAWINGS, SPECIFICATIONS AND RELATED DOCUMENTS IN PART OR WHOLE IS FORBIDDEN WITHOUT THE ARCHITECT'S WRITTEN PERMISSION. DRAWINGS SHALL NOT BE SCALED.  
CONTRACTOR MUST CHECK AND VERIFY ALL DIMENSIONS ON THE JOB.

**NATALE ARCHITECT INC.**  
Suite 218  
240 Coleraine Drive  
Caledon, Ontario  
Tel: (416) 259-1200  
Fax: (416) 259-1202

**ONTARIO ASSOCIATION OF ARCHITECTS**  
SINCE NATALE ARCHITECT INC. HAS BEEN LICENSED SINCE NOV. 21/21

CLIENT:  
**HISTORY HILL GROUP**

PROJECT:  
PROPOSED 1 STOREY INDUSTRIAL BUILDING 'B'  
12556 COLERAINE DRIVE, CALEDON, ONTARIO

DRAWING:  
ENLARGED ELEVATIONS

THIS DRAWING SHALL NOT BE USED FOR CONSTRUCTION PURPOSES UNLESS CORRECTED BY:

DRAWN BY:	nm	CHECKED BY:	GN
DATE:	JULY 2015	SCALE:	AS NOTED
PROJECT NO.:		DRAWING NO.:	

17-01 A501