

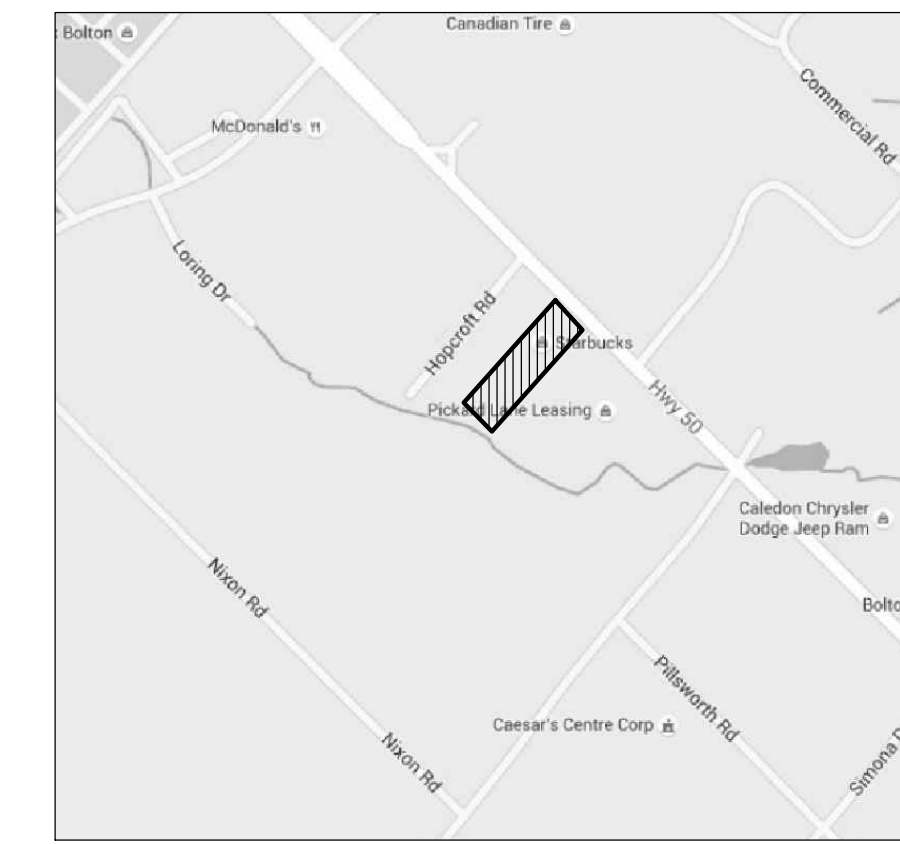
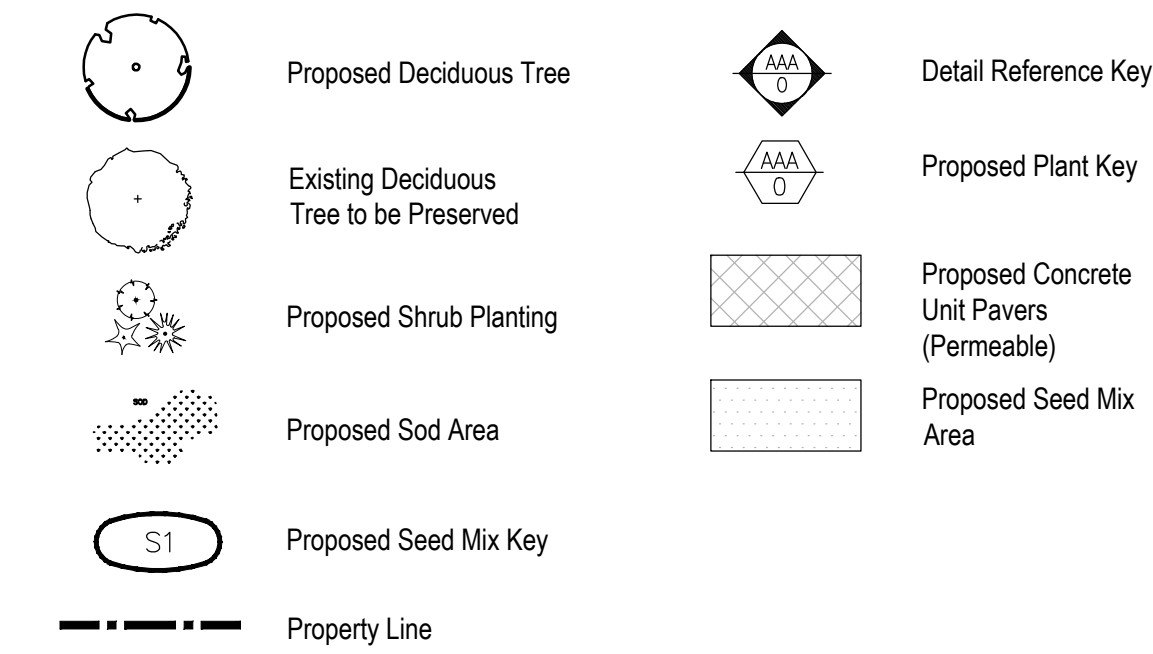
Proposed Plant Schedule

KEY	QNTY	BOTANICAL NAME	COMMON NAME	HTICAL	SPREAD	ROOT	DROUGHT TOLERANT	NATIVE	REMARKS
DECIDUOUS TREES									
LTP	2	Liriodendron tulipifera	Tulip Tree	70 mm	cream	B.B.B.	Yes	Yes	Full Form
ORB	5	Quercus rubra	Red Oak	70 mm		B.B.B.	Yes	Yes	Full Form
ACB	3	Amenancier canadensis 'Ballerina'	Ballerina Serviceberry	200 cm		B.B.B.	Yes	Yes	Multi Stem
DECIDUOUS SHRUBS									
PDD	40	Physocarpus opulifolius	Native Ninebark	80 cm		C.G.	Yes	Yes	Full Form
MPC	22	Myrica gale	Sweet Gale	60 cm		C.G.	Yes	Yes	Full Form
CONIFEROUS SHRUBS									
JXJ	21	Juniperus communis	Common Juniper	70 cm		C.G.	Yes	Yes	Full Form
PERENNIALS AND GRASSES									
CAC	33	Calamagrostis acutiflora 'Karl Foerster'	Karl Foerster Feather Reed Grass				5 Gal.	Yes	No
PLS	98	Perovskia atriplicifolia 'Little Spire'	Little Spire Russian Sage				2 Gal.	Yes	No
SM	30	Salvia x sylvestris 'May Night'	May Night Salvia				2 Gal.	Yes	No

Proposed Plant Schedule - Naturalization Buffer

KEY	QNTY	BOTANICAL NAME	COMMON NAME	HTICAL	SPREAD	ROOT	REMARKS
NATIVE DECIDUOUS TREES							
ASC	9	Acer saccharum	Sugar Maple	50 mm		B.B.B.	Full Form
OMA	3	Quercus macrocarpa	Bur Oak	50 mm		B.B.B.	Full Form
DECIDUOUS TREES (WHIPS)							
TAM	8	Tilia Americana	Basswood Linden	120 cm		B&B	Whip
DECIDUOUS SHRUBS							
PVC	23	Prunus virginiana	Chokecherry	60 cm		C.G.	Shrub form
CNS	25	Cornus stolonifera	Red Osier Dogwood	60 cm		C.G.	Full Form
LNI	14	Dierilla lonicera	Bush Honeysuckle	60 cm		C.G.	Full Form
SAL	14	Symphoricarpos albus	Snowberry	60 cm		C.G.	Full Form
VLE	15	Viburnum lentago	Nannyberry	60 cm		C.G.	Full Form
MPC	23	Myrica pensylvanica	Bayberry	60 cm		C.G.	Full Form

Legend



Key Map

LANDSCAPE ARCHITECTS
msla
 MARTON • SMITH
 170 The Donway W Suite 206, Toronto, Ontario, Canada M3C 2G3
 Tel. 416 492-9966 • Fax. 416 492-0426 • E-mail. msla@msla.ca

Architect:
Architecture Inc
 PRINCIPAL: NITIN MALHOTRA, ARCHITECT.
 9120 Leslie Street, Suite 208,
 Richmond Hill, ON, L4B 3J9
 T: 416 303 4821 F: 905 340 5265
 E: info@architecture.com
 www.architecture.com

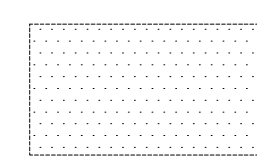
Planner:

TOWN OF CALEDON
PLANNING
RECEIVED
 Sep. 21, 2020

Seed Mix Information

Sowing Rates:
 Mixes are designed to be planted at 22-25 kg/ha (21-23 lbs/acre) or 250 g/90 m² (0.5 lb/1000 ft²). Seed annual ryegrass as a nurse crop for erosion control at 22 kg/ha (20 lbs/acre). This nurse crop will help control weed growth while the wildflower mix establishes. Ideally, sowing should take place in the fall, between Oct 15th to late November. An early spring sowing will work but not as effectively. If moisture is not present, some of the seed may go dormant and not germinate until the following spring. Whenever possible, work up the soil a little to ensure good seed-to-soil contact for improved germination. Call OSC Ltd for more information: 519-886-0557.

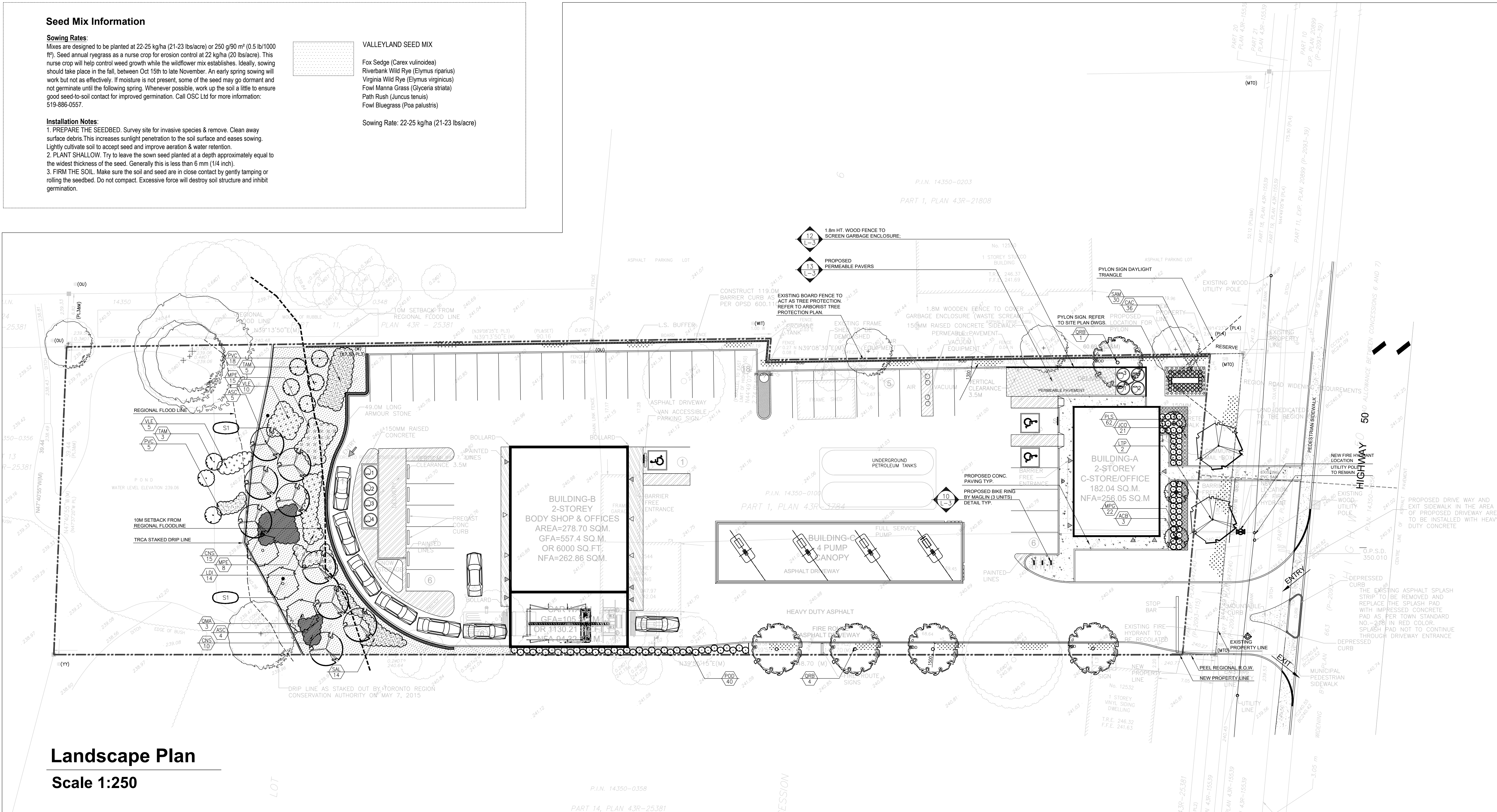
Installation Notes:
 1. PREPARE THE SEEDBED. Survey site for invasive species & remove. Clean away surface debris. This increases sunlight penetration to the soil surface and eases sowing. Lightly cultivate soil to accept seed and improve aeration & water retention.
 2. PLANT SHALLOW. Try to leave the sown seed planted at a depth approximately equal to the widest thickness of the seed. Generally this is less than 6 mm (1/4 inch).
 3. FIRM THE SOIL. Make sure the soil and seed are in close contact by gently tamping or rolling the seedbed. Do not compact. Excessive force will destroy soil structure and inhibit germination.



VALLEYLAND SEED MIX

- Fox Sedge (Carex vulpinoidea)
- Riverbank Wild Rye (Elymus riparius)
- Virginia Wild Rye (Elymus virginicus)
- Fowl Manna Grass (Glycyca striata)
- Path Rush (Juncus tenuis)
- Fowl Bluegrass (Poa palustris)

Sowing Rate: 22-25 kg/ha (21-23 lbs/acre)



Landscape Plan
 Scale 1:250

Municipality:
TOWN OF CALEDON
 Site Plan Application: SP 15-067

7	Revised Per Comments	25/08/20
6	Revised Per Site Plan	27/01/20
5	Revised Per Site Plan	15/04/19
4	Per Servicing & Site Plan	11/04/19
3	Per Grading & Site Plan	12/02/16
2	Issued for Coordination	03/03/16
1	Issued for Coordination	11/03/15
No.	Revision	Date

North:

Stamp:

Project:
Proposed Gas Station
SPA 15-0067
 12544 Highway 50
 Bolton, Ontario

Scale: 1:250 Date: Nov. 2015
 Drawn By: J.C. Checked By: L.M.

Landscape Plan

Project No. 15456 Sheet No. L1 of 3

All information contained in these plans shall be checked by the contractor. All discrepancies shall be reported to the Landscape Architect (L.A.) before commencing work. The contractor shall remain responsible for the accuracy of all information provided to the contractor. The contractor shall not be held responsible for construction unless noted & signed. All change orders must be approved by the Landscape Architect (L.A.) before construction. The contractor shall not be held responsible for construction unless noted & signed. All change orders must be approved by the Landscape Architect (L.A.) before construction. The contractor shall not be held responsible for construction unless noted & signed. All change orders must be approved by the Landscape Architect (L.A.) before construction.