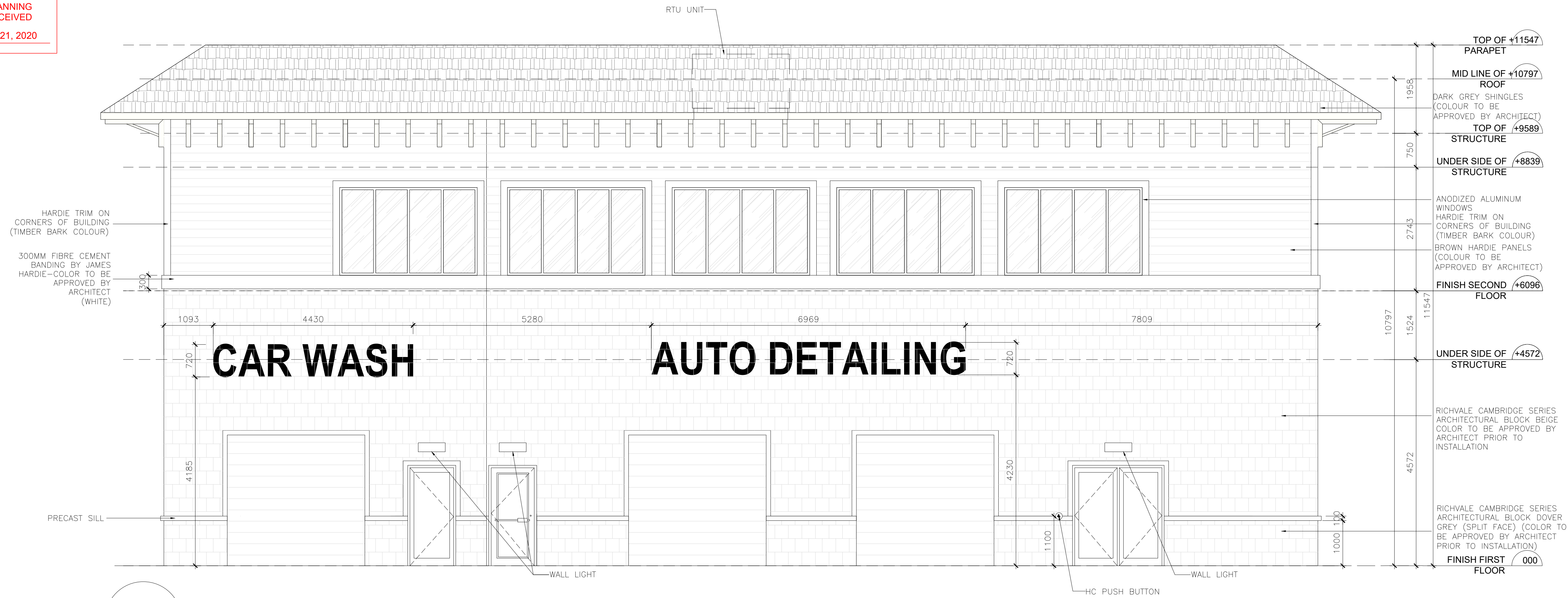
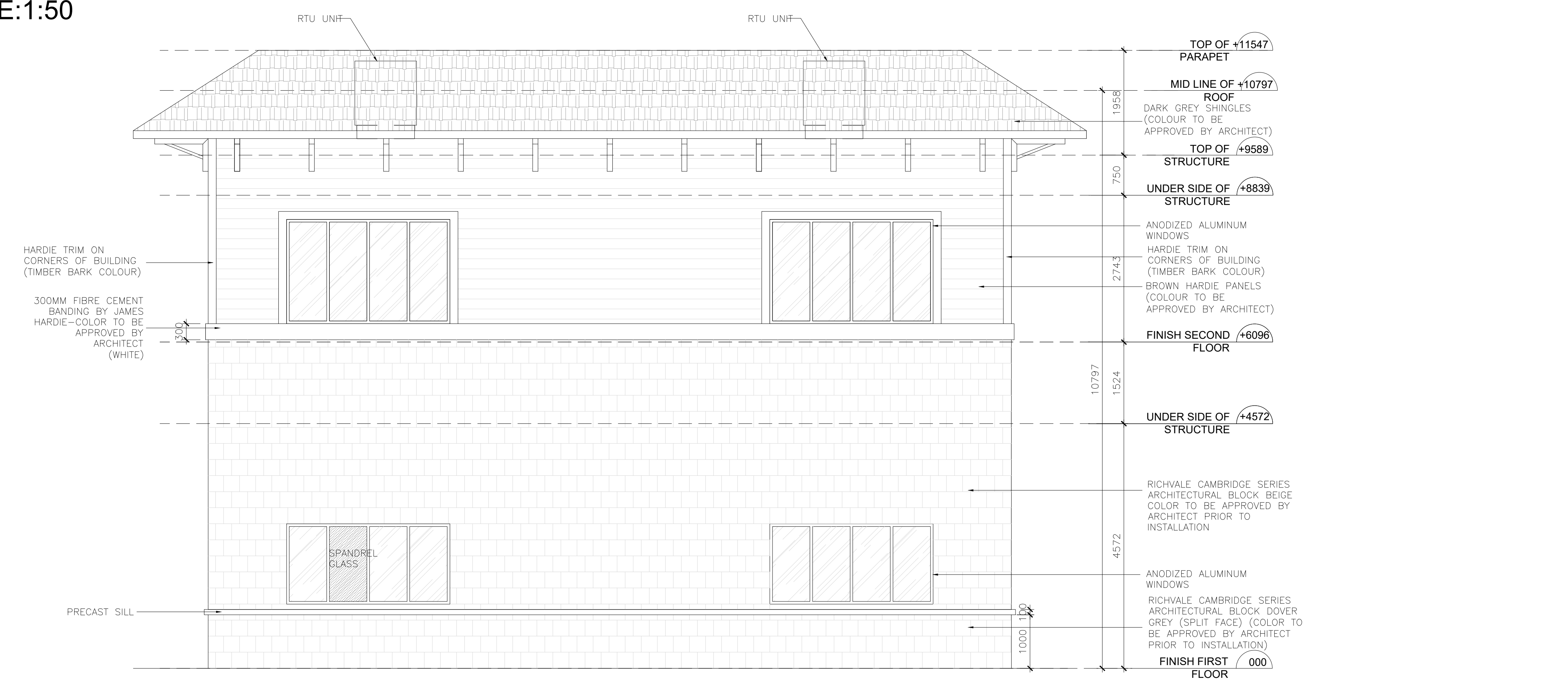


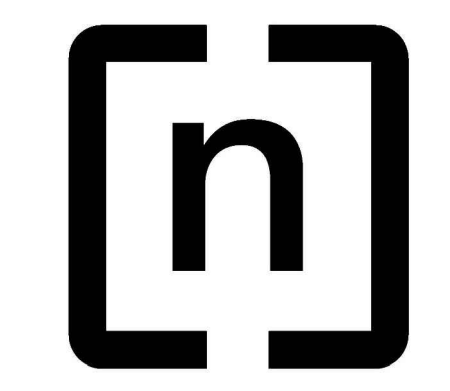
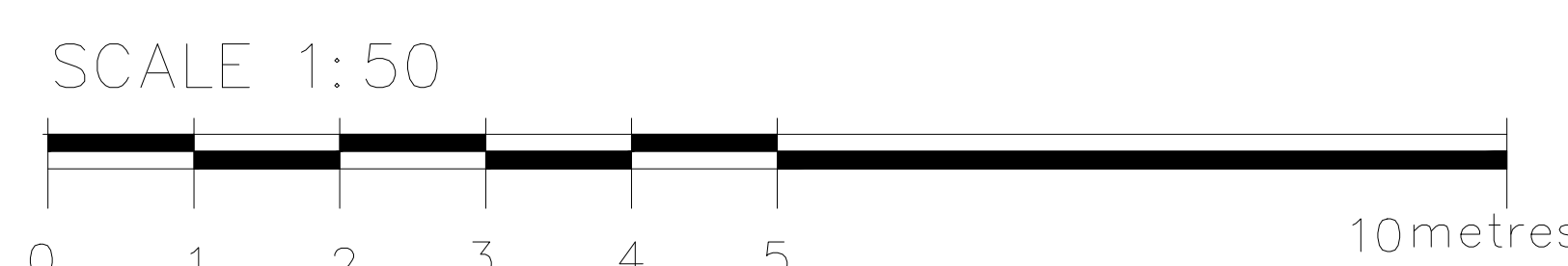
TOWN OF CALEDON  
PLANNING  
RECEIVED  
Sep. 21, 2020



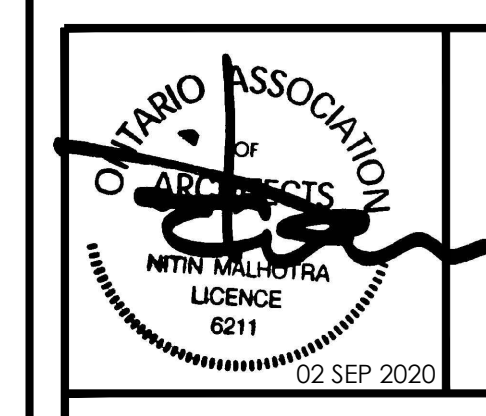
1 EAST ELEVATION  
AB-3.1 SCALE:1:50



2 NORTH ELEVATION  
AB-3.1 SCALE:1:50



**n Architecture Inc**  
PRINCIPAL: NITIN MALHOTRA, ARCHITECT.  
9120 Leslie Street, Suite-208  
Richmond Hill, Ontario, L4B 3J9  
T : 4 1 6 . 3 0 3 . 4 8 2 1  
E: info@narchitecture.com  
www.narchitecture.com



02nd SEPTEMBER 2020  
RE-ISSUED FOR SPA IV AND ZBA II  
NOT FOR CONSTRUCTION

No.	Date	Version	Dwn.
4.	SEP 02, 2020	RE-ISSUED FOR SPA IV AND ZBA II	HG
3.	APR 20, 2019	RE-ISSUED FOR SPA III AND ZBA I	PB
2.	MAR.20, 2017	RE-ISSUED FOR SPA	MG
1.	DEC.01, 2015	ISSUED FOR SPA	N.B.

This drawing is copyright property of 'n Architecture Inc'. Not to be reproduced. Contractor must verify all job dimensions, drawings, details and specifications and report any discrepancies to the architect before proceeding with work.

PROJECT:  
**GAS STATION  
AT 12544 HIGHWAY 50  
BOLTON, ON.**

DRAWING TITLE: SPA 15-67  
RZ 15-08

**BUILDING -B  
ELEVATIONS**

SITE PLAN FILE NUMBER: SC 2003 - 0035

DRAWN BY: NB DATE: 24 JAN. 2014  
CHECKED BY: NM SCALE: AS NOTED

PROJECT NO.: DRAWING NO.:

**13-40 AB-3.1**