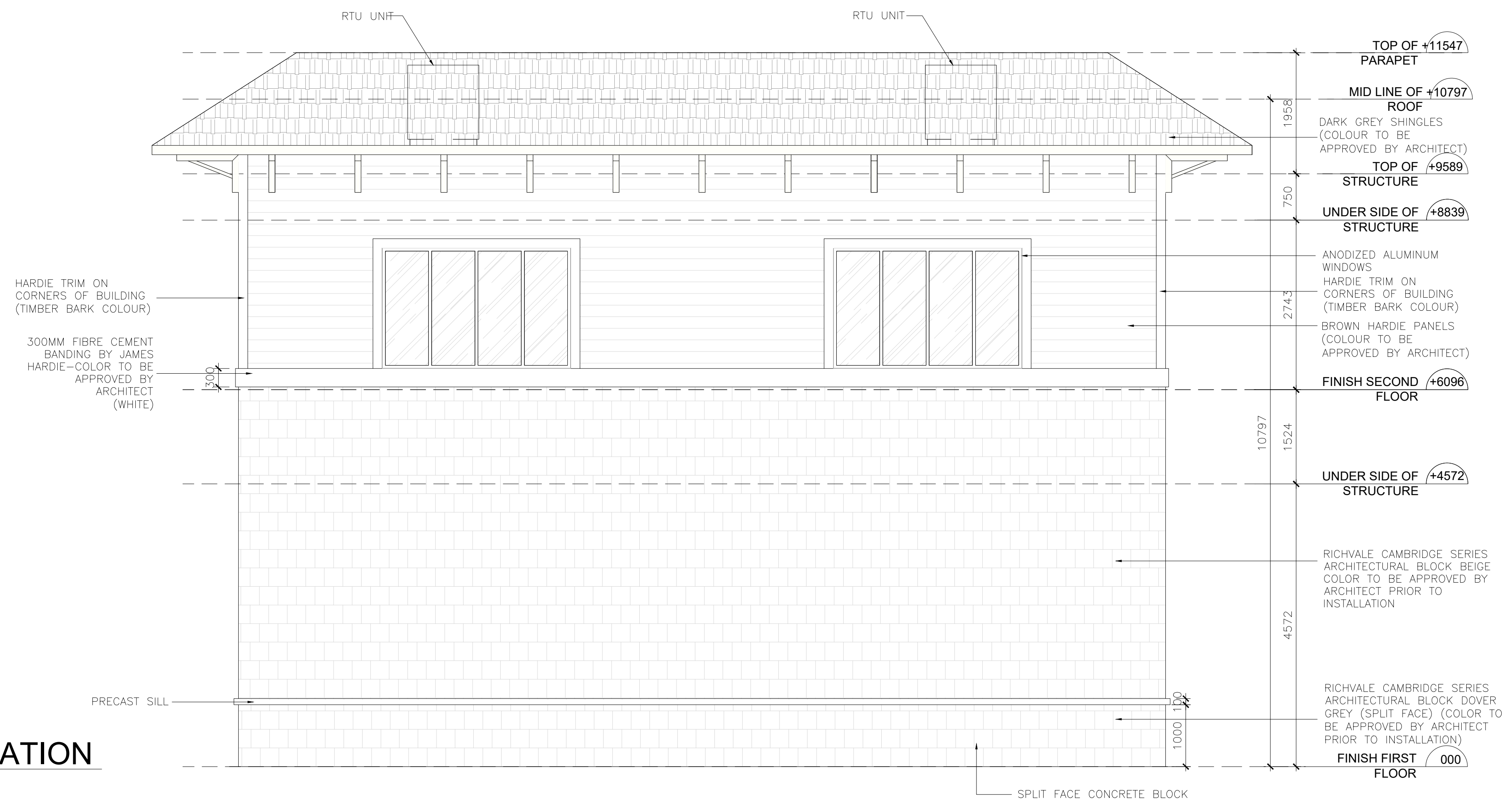
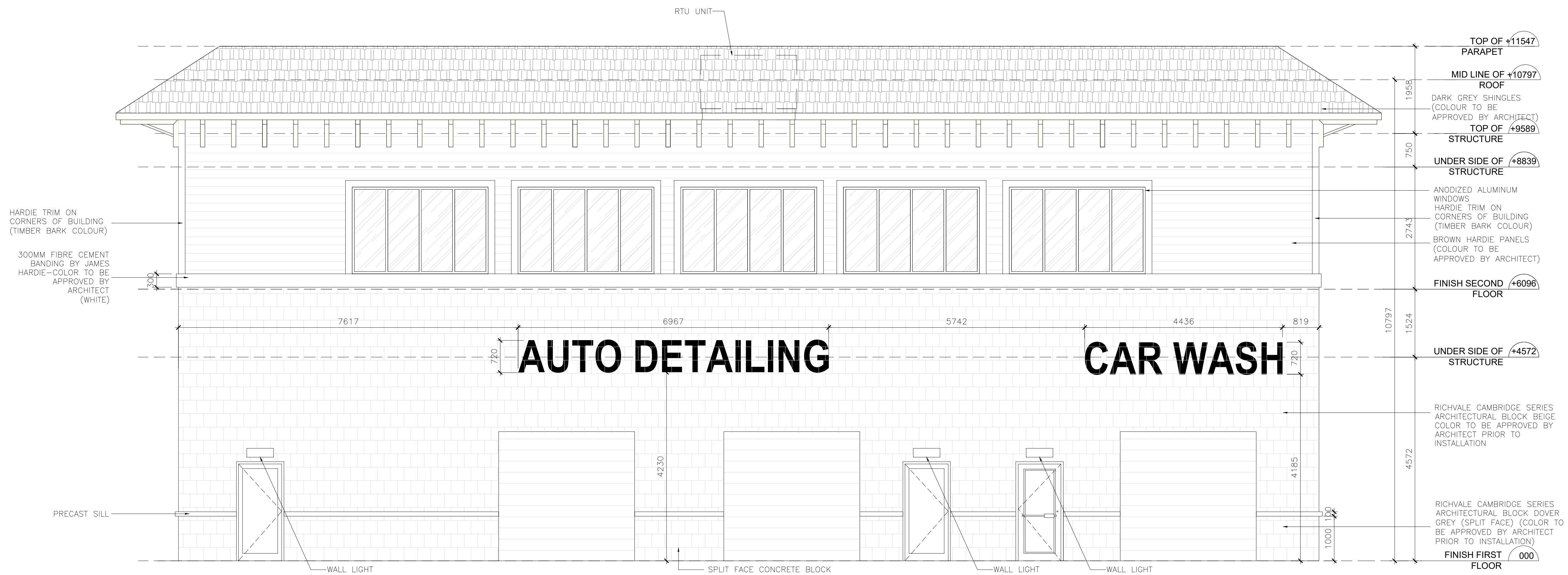


TOWN OF CALEDON
PLANNING
RECEIVED
Sep. 21, 2020

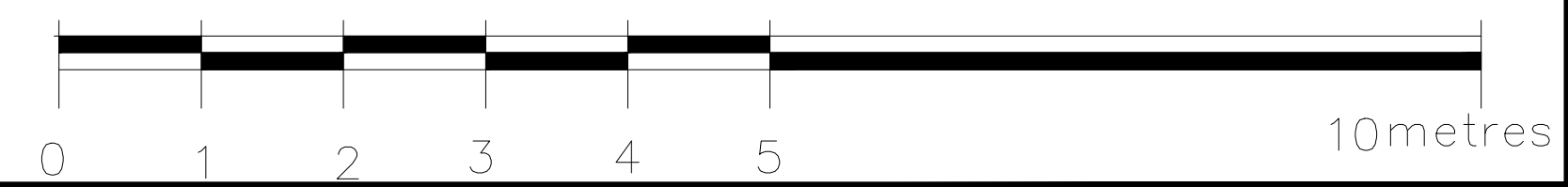


1 SOUTH ELEVATION
AB-3.0 SCALE:1:50

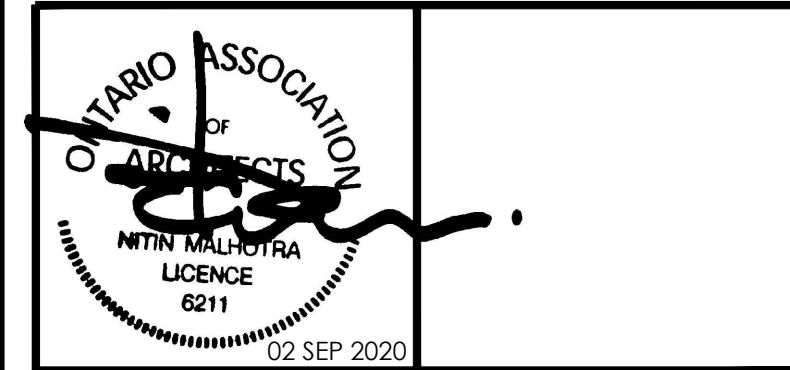


2 WEST ELEVATION
AB-3.0 SCALE:1:50

SCALE 1:50



n Architecture Inc
PRINCIPAL: NITIN MALHOTRA, ARCHITECT.
9120 Leslie Street, Suite-208
Richmond Hill, Ontario, L4B 3J9
T : 4 1 6 . 3 0 3 . 4 8 2 1
E: info@narchitecture.com
www.narchitecture.com



02nd SEPTEMBER 2020
RE-ISSUED FOR SPA IV AND ZBA II
NOT FOR CONSTRUCTION

No.	Date	Version	Dwn.
4.	SEP 02, 2020	RE-ISSUED FOR SPA IV AND ZBA II	HG
3.	APR 20, 2019	RE-ISSUED FOR SPA III AND ZBA I	PB
2.	MAR. 20, 2017	RE-ISSUED FOR SPA	MG
1.	DEC. 01, 2015	ISSUED FOR SPA	N.B.

This drawing is copyright property of 'n Architecture Inc'. Not to be reproduced. Contractor must verify all job dimensions, drawings, details and specifications and report any discrepancies to the architect before proceeding with work.

PROJECT:
**GAS STATION
AT 12544 HIGHWAY 50
BOLTON, ON.**

DRAWING TITLE: SPA 15-67
RZ 15-08

**BUILDING -B
ELEVATIONS**

SITE PLAN FILE NUMBER: SC 2003 - 0035

DRAWN BY: NB DATE: 24 JAN. 2014

CHECKED BY: NM SCALE: AS NOTED

PROJECT NO.: DRAWING NO.:

13-40 AB-3.0