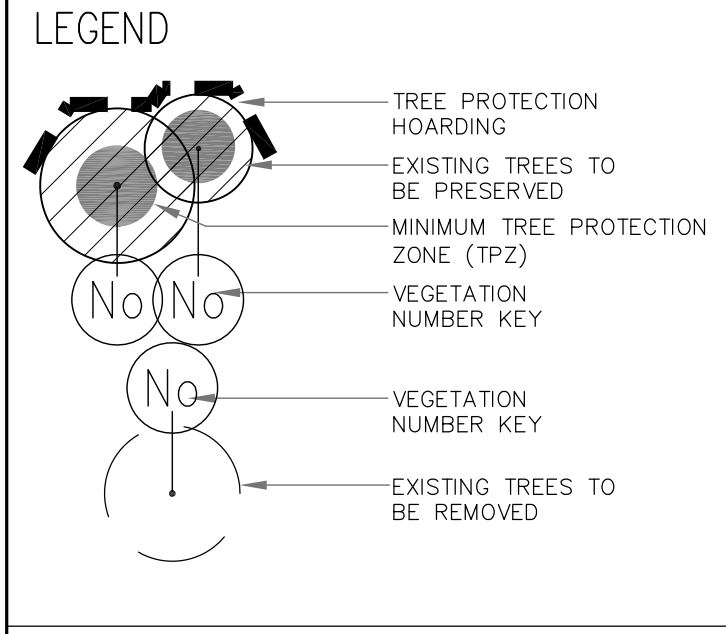
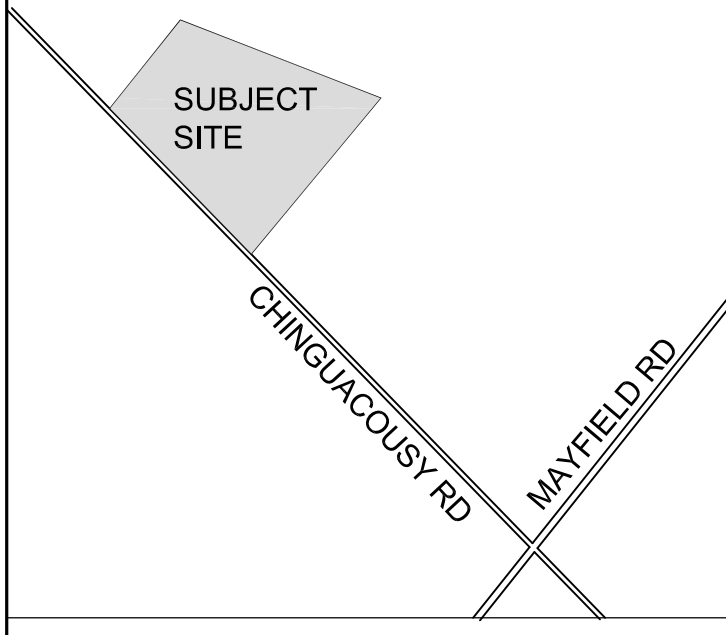




GENERAL NOTES
 VERIFY ALL DIMENSIONS.
 DO NOT SCALE DRAWINGS.
 REPORT ANY DISCREPANCIES, DISCOVERED ERRORS, OR OMISSIONS TO THE LANDSCAPE ARCHITECT BEFORE PROCEEDING.
 IT IS ADVISED THAT CONTRACTORS CONTACT THE LANDSCAPE ARCHITECT PRIOR TO CONSTRUCTION TO ENSURE THE USE OF THE LATEST REVISED DRAWINGS.
 DRAWINGS AND SPECIFICATIONS ARE THE PROPERTY OF THE LANDSCAPE ARCHITECT.

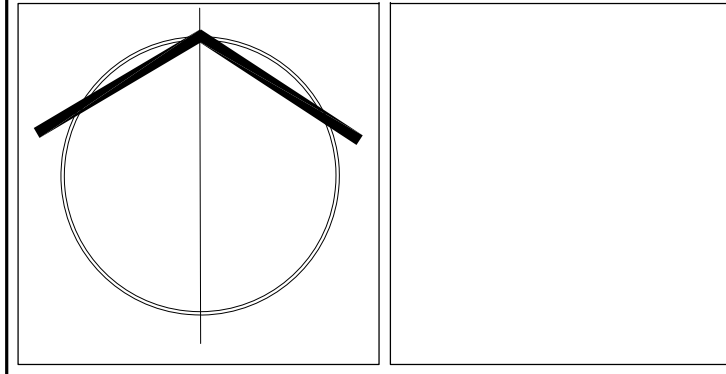


TOWN OF CALEDON PLANNING RECEIVED
 Sept. 29, 2020

TED HEACLE
 International Society of Arboriculture
 Certified Arborist #ON-1740A
 Date: SEPTEMBER 18, 2020

No.	DATE	REVISION	BY
1	SEPT 25, 2020	ISSUED FOR FIRST SUBMISSION	A.J.

It is the responsibility of the Contractor and/or Owner to ensure that the drawings with the latest revisions are used for construction.



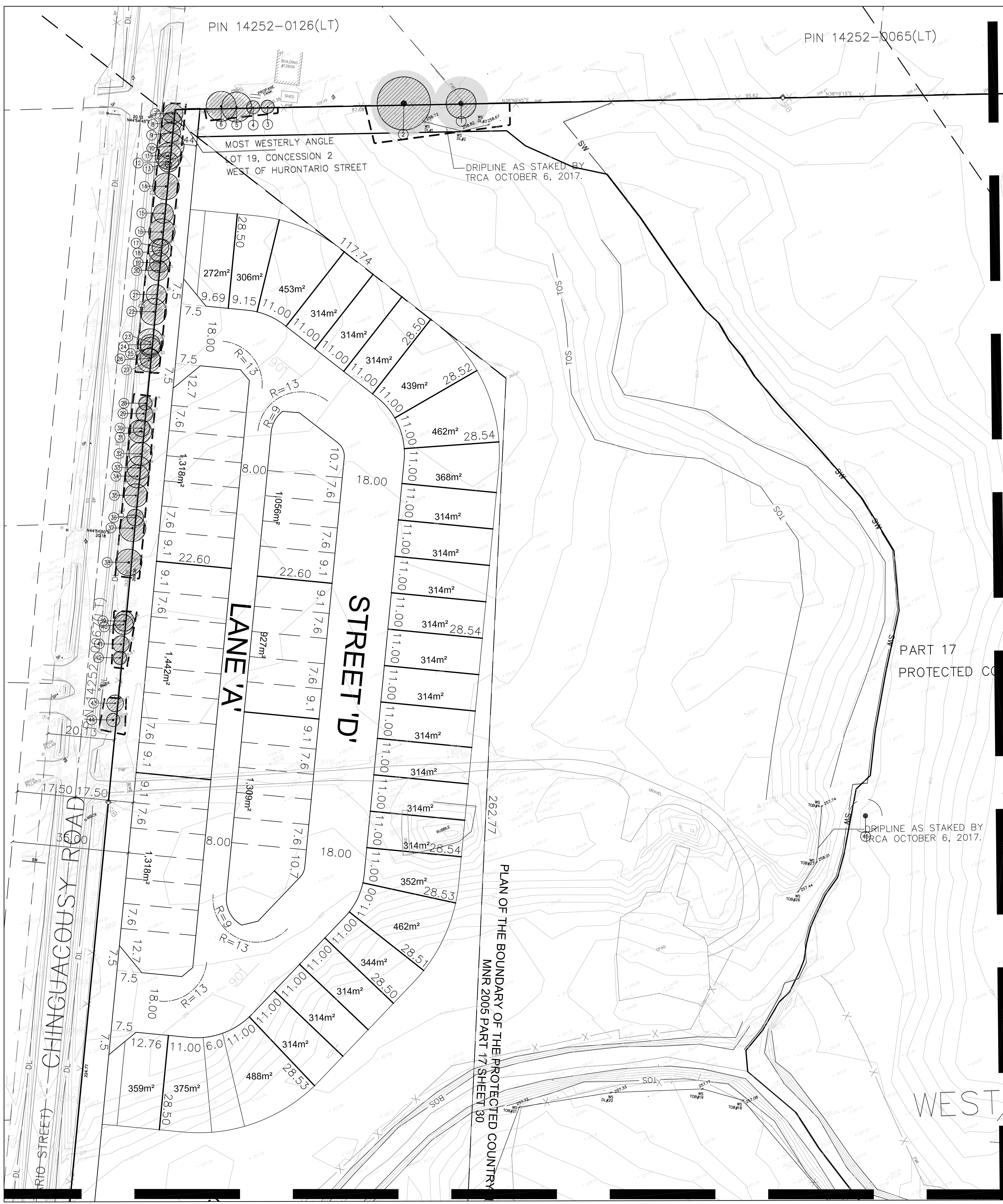
SBK 5770 HURONTARIO STREET, SUITE 320
 MISSISSAUGA, ONTARIO, L5R 3G5
 T: 416.695.4949 F: 905.712.3101
 WWW.STRYBOS.COM

STRYBOS BARRON KING
 LANDSCAPE ARCHITECTURE

PROJECT:
Mayfield West (Caledon) Inc.
 PROPOSED RESIDENTIAL SUBDIVISION
 CALEDON, ONTARIO

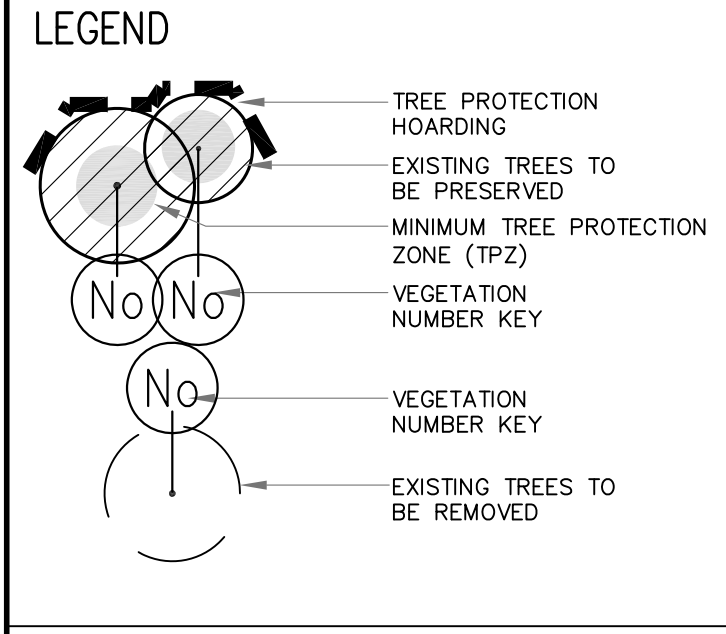
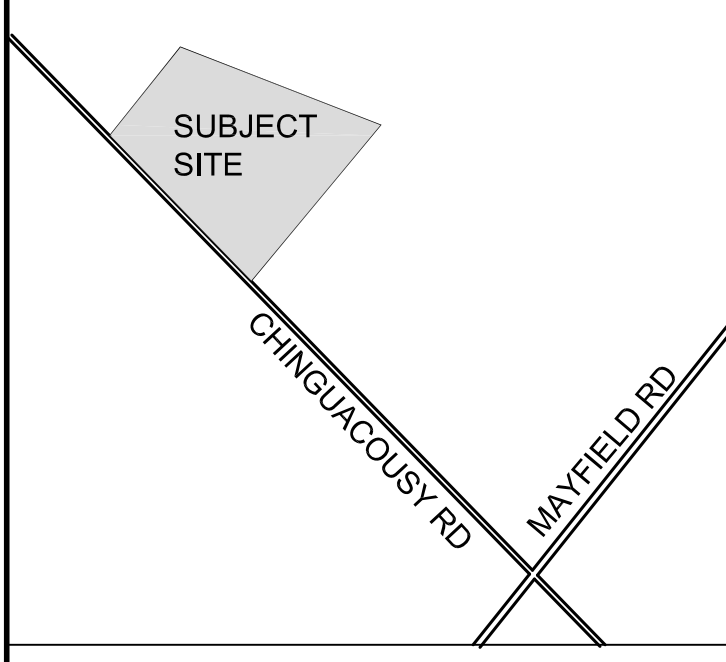
DRAWING TITLE:
TREE INVENTORY AND PRESERVATION KEY PLAN

SCALE: 1:1000	PROJECT No. 5500
DATE: SEPT/2020	DRAWING No. V100
DRAWN BY: N.S.	CHECKED BY: A.J.



Tag No.	Tree Species	Diameter (cm)	Crown Dia. (m)	Health G/F/P	Structure	Comments	Owner	Action	Min TPZ (m)	Tag No.
1	WILLOW	135	9	FAIR	POOR	MAJOR STEM FAILURE. MAJOR DEADWOOD. TREE IS A HAZARD.	NEIGHBOUR	PRESERVE	8.1	1
2	WILLOW	165	16	FAIR	FAIR	MINOR DEADWOOD. LOTS OF SUCKER GROWTH. MAJOR STEM REMOVED.	NEIGHBOUR	PRESERVE	9.9	2
3	COLORADO SPRUCE	26	4	FAIR	FAIR	CROWDED BY ADJACENT TREES. MINOR DEADWOOD.	NEIGHBOUR	PRESERVE	1.8	3
4	COLORADO SPRUCE	27	4	FAIR	FAIR	CROWDED BY ADJACENT TREES. MINOR DEADWOOD.	NEIGHBOUR	PRESERVE	1.8	4
5	SILVER MAPLE	40	9	FAIR	FAIR	CROWDED BY ADJACENT TREES. MINOR DEADWOOD. LOWER BRANCHING.	NEIGHBOUR	PRESERVE	3.0	5
6	SILVER MAPLE	59	9	POOR	POOR	CROWDED BY ADJACENT TREES. MINOR DEADWOOD. LOWER BRANCHING. INKED BARK.	MUNICIPAL	PRESERVE	3.6	6
7	HONEY LOCUST	49	6	FAIR	FAIR	CROWDED BY ADJACENT TREES. GROWING WITHIN THE WIRE FENCE. MINOR DEADWOOD.	MUNICIPAL	PRESERVE	3.0	7
8	HONEY LOCUST	39	6	FAIR	FAIR	CROWDED BY ADJACENT TREES. GROWING WITHIN THE WIRE FENCE. MINOR DEADWOOD.	MUNICIPAL	PRESERVE	2.4	8
9	HONEY LOCUST	36	6	FAIR	FAIR	CROWDED BY ADJACENT TREES. GROWING WITHIN THE WIRE FENCE. MAJOR DEADWOOD. SLIGHT LEAN.	MUNICIPAL	PRESERVE	2.4	9
10	HONEY LOCUST	32/36	8	FAIR	POOR	MULTI STEMS. MINOR DEADWOOD. CROWDED BY ADJACENT TREES. GROWING WITHIN THE WIRE FENCE.	MUNICIPAL	PRESERVE	2.4	10
11	HONEY LOCUST	32/33	8	FAIR	POOR	MULTI STEMS. MINOR DEADWOOD. CROWDED BY ADJACENT TREES. GROWING WITHIN THE WIRE FENCE.	MUNICIPAL	PRESERVE	2.4	11
12	HONEY LOCUST	33	6	FAIR	FAIR	CROWDED BY ADJACENT TREES. GROWING WITHIN THE WIRE FENCE. MINOR DEADWOOD.	MUNICIPAL	PRESERVE	2.4	12
13	HONEY LOCUST	21	2	POOR	POOR	CROWDED BY ADJACENT TREES. MAJOR DEADWOOD. HEAVY CROWN LEAN.	MUNICIPAL	PRESERVE	1.8	13
14	HONEY LOCUST	57	8	FAIR	FAIR	CROWDED BY ADJACENT TREES. GROWING WITHIN THE WIRE FENCE. MINOR DEADWOOD.	MUNICIPAL	PRESERVE	3.6	14
15	HONEY LOCUST	47	6	FAIR	FAIR	CROWDED BY ADJACENT TREES. GROWING WITHIN THE WIRE FENCE. MINOR DEADWOOD.	MUNICIPAL	PRESERVE	3.0	15
16	HONEY LOCUST	51	8	FAIR	FAIR	CROWDED BY ADJACENT TREES. GROWING WITHIN THE WIRE FENCE. MINOR DEADWOOD.	MUNICIPAL	PRESERVE	3.6	16
17	HONEY LOCUST	25	5	FAIR	FAIR	CROWDED BY ADJACENT TREES. GROWING WITHIN THE WIRE FENCE. MINOR DEADWOOD.	MUNICIPAL	PRESERVE	1.8	17
18	HONEY LOCUST	33	7	FAIR	FAIR	CROWDED BY ADJACENT TREES. GROWING WITHIN THE WIRE FENCE. MINOR DEADWOOD. HEAVY LEAN. ONE SIDED CROWN.	MUNICIPAL	PRESERVE	2.4	18
19	HONEY LOCUST	39	6	FAIR	FAIR	CROWDED BY ADJACENT TREES. GROWING WITHIN THE WIRE FENCE. MINOR DEADWOOD.	MUNICIPAL	PRESERVE	2.4	19
20	HONEY LOCUST	33	6	FAIR	FAIR	CROWDED BY ADJACENT TREES. GROWING WITHIN THE WIRE FENCE. MINOR DEADWOOD.	MUNICIPAL	PRESERVE	2.4	20
21	HONEY LOCUST	20/22	6	FAIR	FAIR	MULTI STEMS. MINOR DEADWOOD. CROWDED BY ADJACENT TREES. GROWING WITHIN THE WIRE FENCE.	MUNICIPAL	PRESERVE	1.8	21
22	HONEY LOCUST	35/48	8	FAIR	FAIR	CROWDED BY ADJACENT TREES. GROWING WITHIN THE WIRE FENCE.	MUNICIPAL	PRESERVE	3.0	22
23	HONEY LOCUST	23	6	FAIR	FAIR	CROWDED BY ADJACENT TREES. GROWING WITHIN THE WIRE FENCE. MINOR DEADWOOD.	MUNICIPAL	PRESERVE	1.8	23
24	HONEY LOCUST	38	6	FAIR	FAIR	CROWDED BY ADJACENT TREES. GROWING WITHIN THE WIRE FENCE. MINOR DEADWOOD.	MUNICIPAL	PRESERVE	2.4	24
25	HONEY LOCUST	23/28	6	FAIR	FAIR	MULTI STEMS. MINOR DEADWOOD. CROWDED BY ADJACENT TREES. GROWING WITHIN THE WIRE FENCE.	MUNICIPAL	PRESERVE	1.8	25
26	HONEY LOCUST	39	6	FAIR	FAIR	CROWDED BY ADJACENT TREES. GROWING WITHIN THE WIRE FENCE. MINOR DEADWOOD.	MUNICIPAL	PRESERVE	2.4	26
27	HONEY LOCUST	32	6	FAIR	FAIR	CROWDED BY ADJACENT TREES. GROWING WITHIN THE WIRE FENCE. MINOR DEADWOOD.	MUNICIPAL	PRESERVE	2.4	27
28	HONEY LOCUST	38	4	FAIR	FAIR	CROWDED BY ADJACENT TREES. GROWING WITHIN THE WIRE FENCE. MINOR DEADWOOD.	MUNICIPAL	PRESERVE	2.4	28
29	HONEY LOCUST	20/45	5	FAIR	FAIR	CROWDED BY ADJACENT TREES. GROWING WITHIN THE WIRE FENCE. MINOR DEADWOOD.	MUNICIPAL	PRESERVE	3.0	29
30	HONEY LOCUST	35	5	FAIR	FAIR	CROWDED BY ADJACENT TREES. GROWING WITHIN THE WIRE FENCE. MINOR DEADWOOD.	MUNICIPAL	PRESERVE	2.4	30
31	HONEY LOCUST	35/46	7	FAIR	FAIR	CROWDED BY ADJACENT TREES. GROWING WITHIN THE WIRE FENCE. MINOR DEADWOOD.	MUNICIPAL	PRESERVE	2.4	31
32	HONEY LOCUST	38	7	FAIR	FAIR	CROWDED BY ADJACENT TREES. GROWING WITHIN THE WIRE FENCE. MINOR DEADWOOD.	MUNICIPAL	PRESERVE	2.4	32
33	HONEY LOCUST	20/22/38	7	FAIR	FAIR	MULTI STEMS. MINOR DEADWOOD. CROWDED BY ADJACENT TREES. GROWING WITHIN THE WIRE FENCE.	MUNICIPAL	PRESERVE	2.4	33
34	HONEY LOCUST	44	7	FAIR	FAIR	CROWDED BY ADJACENT TREES. GROWING WITHIN THE WIRE FENCE. MINOR DEADWOOD.	MUNICIPAL	PRESERVE	3.0	34
35	HONEY LOCUST	42	7	FAIR	FAIR	CROWDED BY ADJACENT TREES. GROWING WITHIN THE WIRE FENCE. MINOR DEADWOOD.	MUNICIPAL	PRESERVE	3.0	35
36	HONEY LOCUST	38	5	FAIR	FAIR	CROWDED BY ADJACENT TREES. GROWING WITHIN THE WIRE FENCE. MINOR DEADWOOD.	MUNICIPAL	PRESERVE	2.4	36
37	HONEY LOCUST	57	8	FAIR	FAIR	CROWDED BY ADJACENT TREES. GROWING WITHIN THE WIRE FENCE. MINOR DEADWOOD.	MUNICIPAL	PRESERVE	3.6	37
38	HONEY LOCUST	60	8	FAIR	FAIR	CROWDED BY ADJACENT TREES. GROWING WITHIN THE WIRE FENCE. MINOR DEADWOOD.	MUNICIPAL	PRESERVE	3.6	38
39	HONEY LOCUST	44	6	FAIR	FAIR	CROWDED BY ADJACENT TREES. GROWING WITHIN THE WIRE FENCE. MINOR DEADWOOD.	MUNICIPAL	PRESERVE	3.0	39
40	HONEY LOCUST	36	6	FAIR	FAIR	CROWDED BY ADJACENT TREES. GROWING WITHIN THE WIRE FENCE. MINOR DEADWOOD.	MUNICIPAL	PRESERVE	2.4	40
41	HONEY LOCUST	32	5	FAIR	FAIR	CROWDED BY ADJACENT TREES. GROWING WITHIN THE WIRE FENCE. MINOR DEADWOOD.	MUNICIPAL	PRESERVE	2.4	41
42	HONEY LOCUST	33	4	FAIR	FAIR	CROWDED BY ADJACENT TREES. GROWING WITHIN THE WIRE FENCE. MINOR DEADWOOD.	MUNICIPAL	PRESERVE	3.0	42
43	HONEY LOCUST	28	5	FAIR	FAIR	CROWDED BY ADJACENT TREES. GROWING WITHIN THE WIRE FENCE. MINOR DEADWOOD.	MUNICIPAL	PRESERVE	3.0	43
44	HONEY LOCUST	57	4	FAIR	FAIR	CROWDED BY ADJACENT TREES. GROWING WITHIN THE WIRE FENCE. MINOR DEADWOOD.	MUNICIPAL	PRESERVE	3.6	44
45	ASH	137	10	POOR	POOR	EAB. TREE IN HEAVY DECLINE. 90% DEAD.	MUNICIPAL	REMOVE	N/A	45

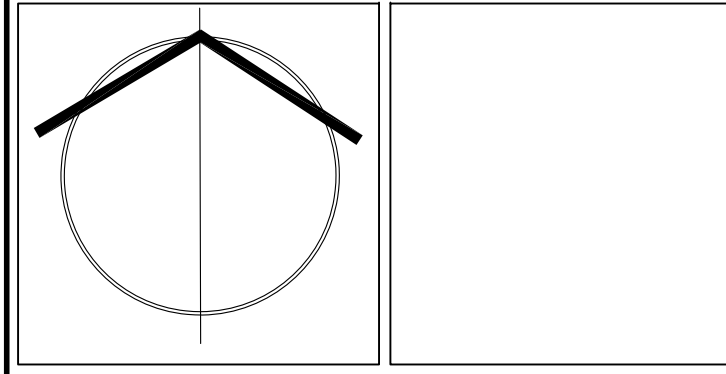
GENERAL NOTES
 VERIFY ALL DIMENSIONS.
 DO NOT SCALE DRAWINGS.
 REPORT ANY DISCREPANCIES, DISCOVERED ERRORS, OR OMISSIONS TO THE LANDSCAPE ARCHITECT BEFORE PROCEEDING.
 IT IS ADVISED THAT CONTRACTORS CONTACT THE LANDSCAPE ARCHITECT PRIOR TO CONSTRUCTION TO ENSURE THE USE OF THE LATEST REVISED DRAWINGS.
 DRAWINGS AND SPECIFICATIONS ARE THE PROPERTY OF THE LANDSCAPE ARCHITECT.



TED HEAGLE
 International Society of Arboriculture
 Certified Arborist #0N-1740A
 Date: SEPTEMBER 18, 2020

No.	DATE	REVISION	BY
1	SEPT 25, 2020	ISSUED FOR FIRST SUBMISSION	A.J.

It is the responsibility of the Contractor and/or Owner to ensure that the drawings with the latest revisions are used for construction.



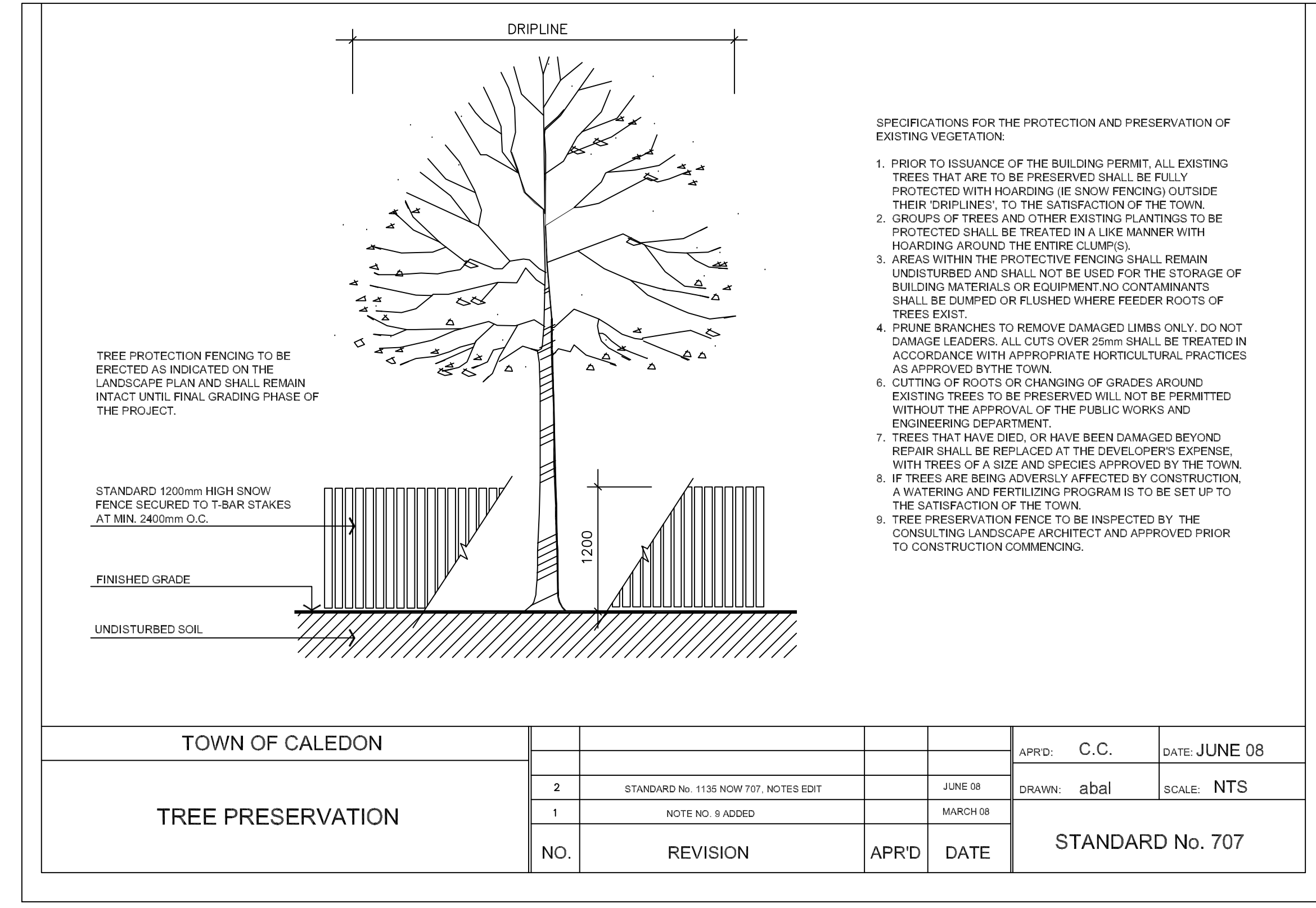
SBK
 STRYBOS BARRON KING
 LANDSCAPE ARCHITECTURE

5770 HURONTARIO STREET, SUITE 320
 MISSISSAUGA, ONTARIO, L5R 3G5
 T: 416.692.4949 F: 905.712.3101
 WWW.STRYBOS.COM

PROJECT: Mayfield West (Caledon) Inc.
 PROPOSED RESIDENTIAL SUBDIVISION
 CALEDON, ONTARIO

DRAWING TITLE: TREE INVENTORY AND PRESERVATION PLAN

SCALE: 1:500	PROJECT No. 5500
DATE: SEPT/2020	DRAWING No. V101
DRAWN BY: N.S.	CHECKED BY: A.J.



TOWN OF CALEDON	APPROVED: C.C.	DATE: JUNE 08
TREE PRESERVATION	DRAWN: abal	SCALE: NTS
NO.	REVISION	APR/D DATE
1	NOTE NO. 8 ADDED	MARCH 08
		STANDARD No. 707



Tag No.	Tree Species	Diameter (cm)	Crown Dia. (m)	Health G/F/P	Structure	Comments	Owner	Action	Min TPZ (m)	Tag No.
46	ASH	45	3	POOR	POOR	EAB. TREE IN HEAVY DECLINE. 90% DEAD. HYDRO PRUNED	MUNICIPAL	REMOVE	N/A	46
47	ASH	67	3	POOR	POOR	EAB. TREE IN HEAVY DECLINE. 90% DEAD. HYDRO PRUNED	MUNICIPAL	REMOVE	N/A	46
48	HONEY LOCUST	15/23	4	FAIR	FAIR	MULTI STEMS. MINOR DEADWOOD. CROWDED BY ADJACENT TREES. GROWING WITHIN THE WIRE FENCE.	MUNICIPAL	PRESERVE	1.8	47
49	ASH	50	3	POOR	POOR	EAB. TREE IN HEAVY DECLINE. 90% DEAD.	MUNICIPAL	REMOVE	N/A	48
50	ASH	42	0	POOR	POOR	EAB. TREE IN HEAVY DECLINE. DEAD.	MUNICIPAL	REMOVE	N/A	49
51	ASH	52	2	POOR	POOR	EAB. TREE IN HEAVY DECLINE. 90% DEAD.	MUNICIPAL	REMOVE	N/A	50
52	HONEY LOCUST	22/29	6	FAIR	FAIR	MULTI STEMS. MINOR DEADWOOD. CROWDED BY ADJACENT TREES. GROWING WITHIN THE WIRE FENCE. BROKEN AS H	MUNICIPAL	PRESERVE	1.8	51
23	SILVER MAPLE	25/28	10	GOOD	GOOD	CO-DOMINANT STEMS. MINOR DEADWOOD.	NEIGHBOUR	PRESERVE	1.8	52
54	POPLAR	25	6	FAIR	FAIR	MINOR DEADWOOD. CROWDED BY ADJACENT TREES.	NEIGHBOUR	PRESERVE	1.8	53
55	SILVER MAPLE	20/22/25	10	GOOD	GOOD	SREMS	NEIGHBOUR	PRESERVE	1.8	54
56	BUR OAK	39	7	GOOD	GOOD	BROAD FORM. MINOR DEADWOOD.	SUBJECT SITE	REMOVE	2.4	55
57	BUR OAK	69	14	GOOD	GOOD	BROAD FORM. MINOR DEADWOOD.	SUBJECT SITE	PRESERVE	4.2	56
58	BUR OAK	63	12	GOOD	GOOD	BROAD FORM. MINOR DEADWOOD.	SUBJECT SITE	PRESERVE	4.2	57
59	BUR OAK	106	20	GOOD	GOOD	BROAD FORM. DEADWOOD.	SUBJECT SITE	PRESERVE	6.8	58

GENERAL NOTES

- VERIFY ALL DIMENSIONS.
- DO NOT SCALE DRAWINGS.
- REPORT ANY DISCREPANCIES, DISCOVERED ERRORS, OR OMISSIONS TO THE LANDSCAPE ARCHITECT BEFORE PROCEEDING.
- IT IS ADVISED THAT CONTRACTORS CONTACT THE LANDSCAPE ARCHITECT PRIOR TO CONSTRUCTION TO ENSURE THE USE OF THE LATEST REVISED DRAWINGS.
- DRAWINGS AND SPECIFICATIONS ARE THE PROPERTY OF THE LANDSCAPE ARCHITECT.

LEGEND

- TREE PROTECTION HOARDING
- EXISTING TREES TO BE PRESERVED
- MINIMUM TREE PROTECTION ZONE (TPZ)
- VEGETATION NUMBER KEY
- VEGETATION NUMBER KEY
- EXISTING TREES TO BE REMOVED

TED HEAGLE
 International Society of Arboriculture
 Certified Arborist #ON-17404
 Date: SEPTEMBER 18, 2020

TREE PROTECTION FENCING TO BE ERRECTED AS INDICATED ON THE LANDSCAPE PLAN AND SHALL REMAIN INTACT UNTIL FINAL GRADING PHASE OF THE PROJECT.

STANDARD 1200mm HIGH SNOW FENCE SECURED TO T-BAR STAKES AT MIN. 2400mm O.C.

FINISHED GRADE

UNDISTURBED SOIL

1200

SPECIFICATIONS FOR THE PROTECTION AND PRESERVATION OF EXISTING VEGETATION:

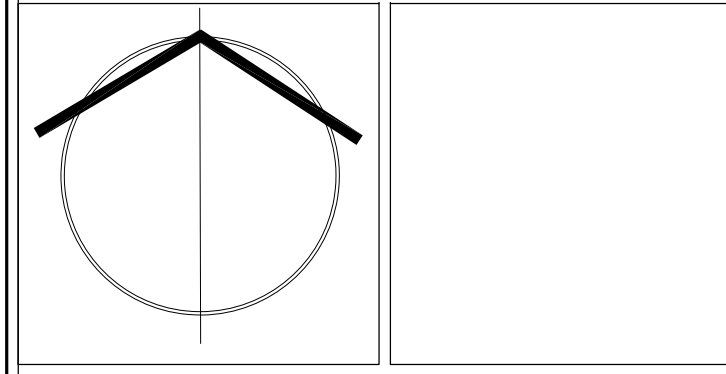
- PRIOR TO ISSUANCE OF THE BUILDING PERMIT, ALL EXISTING TREES THAT ARE TO BE PRESERVED SHALL BE FULLY PROTECTED WITH HOARDING (OR SNOW FENCING) OUTSIDE THEIR DRIPLINES, TO THE SATISFACTION OF THE TOWN.
- GROUPS OF TREES AND OTHER EXISTING PLANTINGS TO BE PROTECTED SHALL BE TREATED IN A LIKE MANNER WITH HOARDING AROUND THE ENTIRE CLUMPS.
- AREAS WITHIN THE PROTECTIVE FENCING SHALL REMAIN UNDISTURBED AND SHALL NOT BE USED FOR THE STORAGE OF BUILDING MATERIALS OR EQUIPMENT. NO CONTAMINANTS SHALL BE QUARRELED OR PLUMBED WHERE FEEDER ROOTS OF TREES EXIST.
- PRUNE BRANCHES TO REMOVE DAMAGED LIMBS ONLY. DO NOT DAMAGE LEADERS. ALL CUTS OVER 25mm SHALL BE TREATED IN ACCORDANCE WITH APPROPRIATE HORTICULTURAL PRACTICES AS APPROVED BY THE TOWN.
- CUTTING OF ROOTS OR CHANGING OF GRADES AROUND EXISTING TREES WILL NOT BE PERMITTED WITHOUT THE APPROVAL OF THE PUBLIC WORKS AND ENGINEERING DEPARTMENT.
- TREES THAT HAVE DIED, OR HAVE BEEN DAMAGED BEYOND REPAIR SHALL BE REPLACED AT THE DEVELOPER'S EXPENSE WITH TREES OF A SIZE AND SPECIES APPROVED BY THE TOWN.
- IF TREES ARE BEING ADVERSELY AFFECTED BY CONSTRUCTION, A WATERING AND FERTILIZING PROGRAM IS TO BE SET UP TO THE SATISFACTION OF THE TOWN.
- TREE PRESERVATION FENCING TO BE INSPECTED BY THE CONSULTING LANDSCAPE ARCHITECT AND APPROVED PRIOR TO CONSTRUCTION COMMENCING.

TOWN OF CALEDON

TREE PRESERVATION

2	STANDARD No. 1135 NOW 707, NOTES EDIT	JUNE 08	APRD: C.C.	DATE: JUNE 08
1	NOTE NO. 8 ADDED	MARCH 08	DRAWN: abal	SCALE: NTS
NO.	REVISION	APRD	DATE	STANDARD No. 707

It is the responsibility of the Contractor and/or Owner to ensure that the drawings with the latest revisions are used for construction.



SBK 5770 HURONTARIO STREET, SUITE 320
 MISSISSAUGA, ONTARIO, L5R 3G5
 T: 416.695.4949 F: 905.712.3101
 WWW.STRYBOS.COM

STRYBOS BARRON KING
 LANDSCAPE ARCHITECTURE

PROJECT:
Mayfield West (Caledon) Inc.
 PROPOSED RESIDENTIAL SUBDIVISION
 CALEDON, ONTARIO

DRAWING TITLE:
TREE INVENTORY AND PRESERVATION PLAN

SCALE:	1:500	PROJECT No.:	5500
DATE:	SEPT/2020	DRAWING No.:	V102
DRAWN BY:	N.S.	CHECKED BY:	A.J.