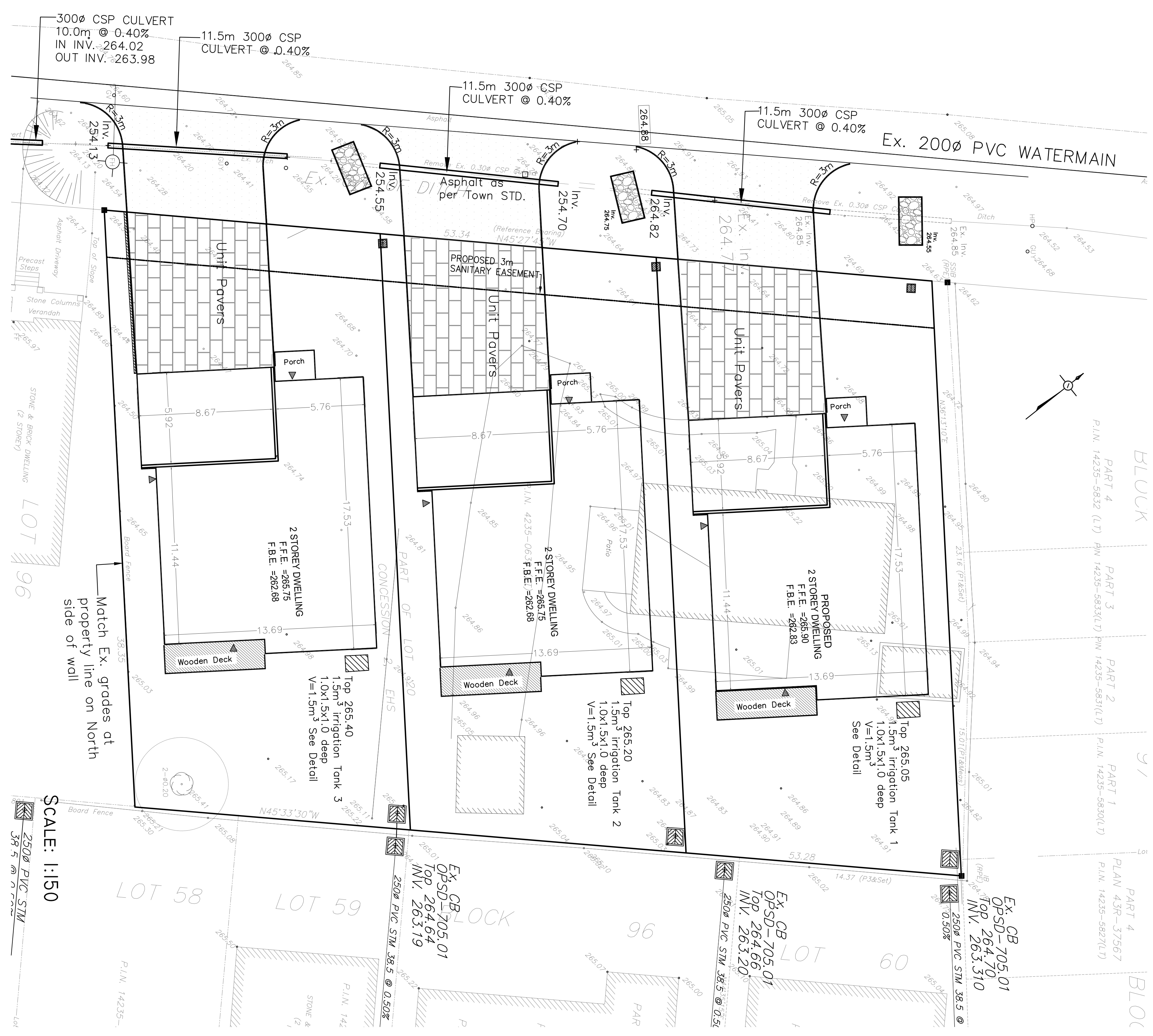
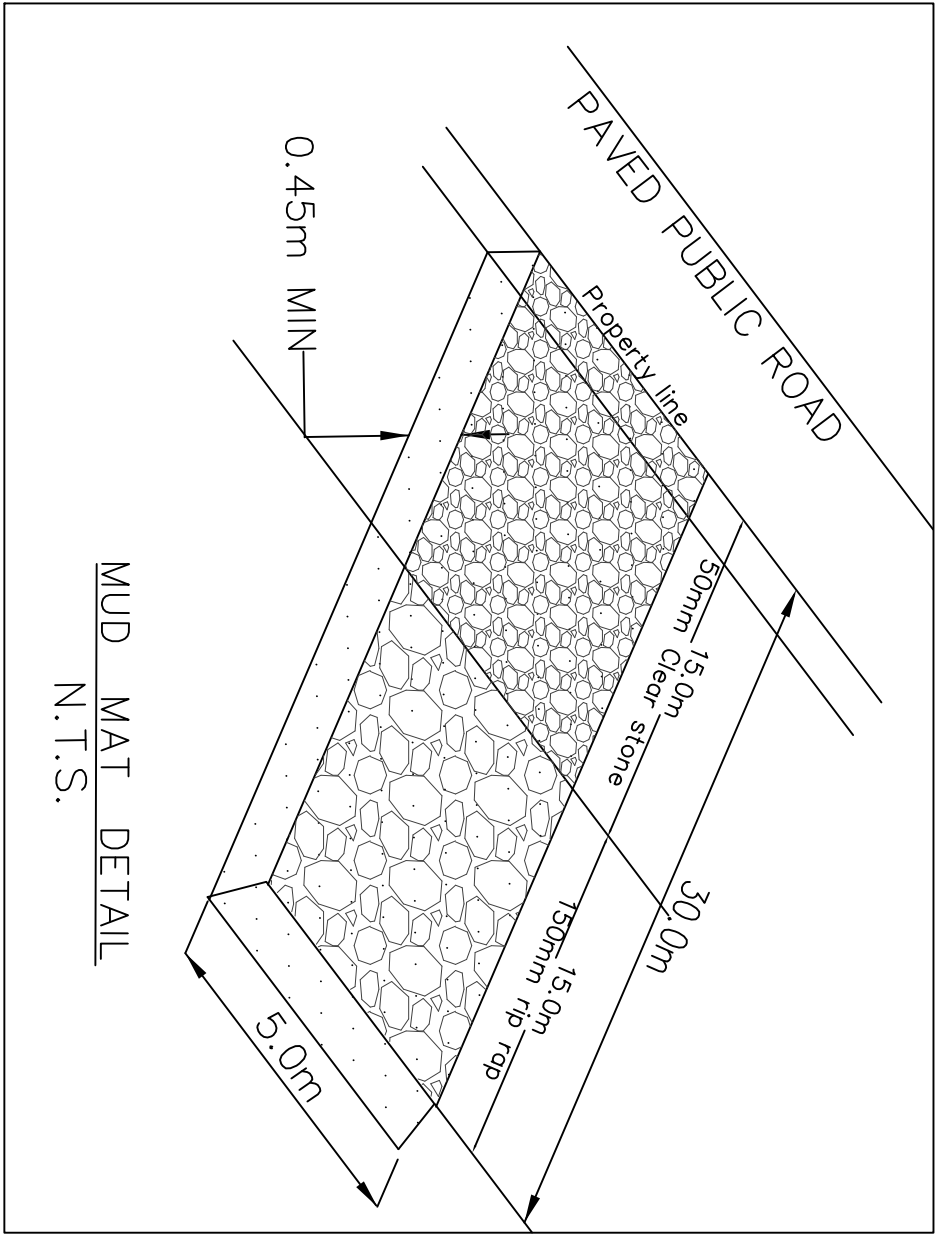
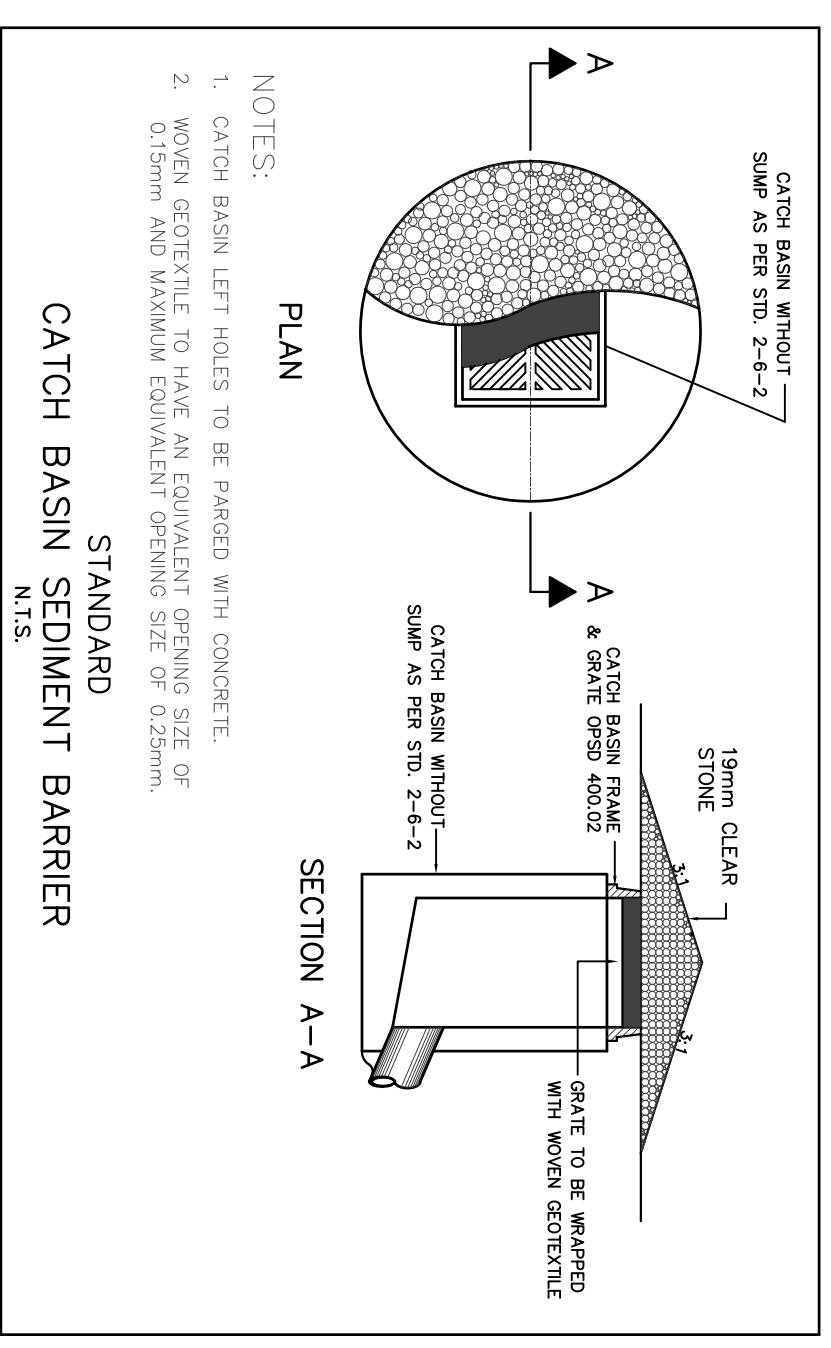


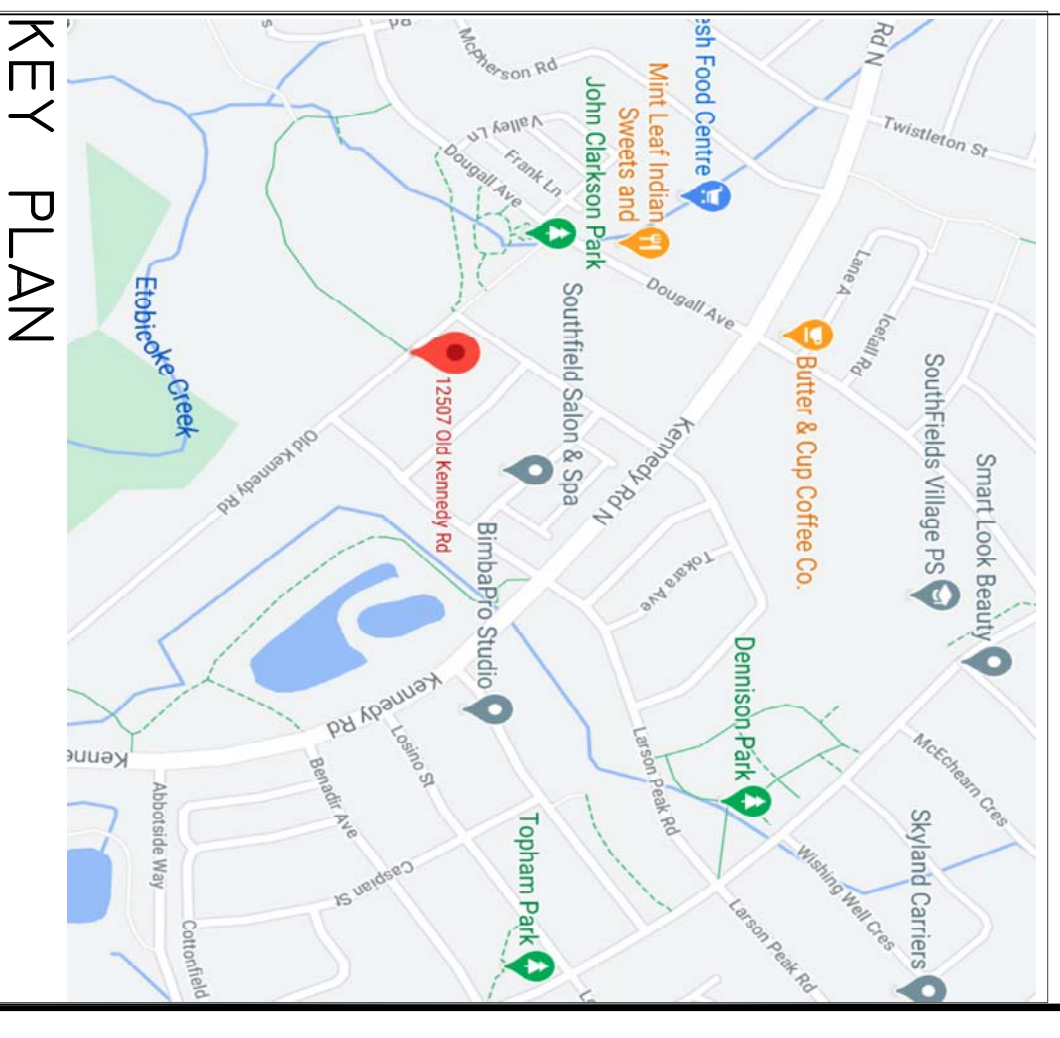
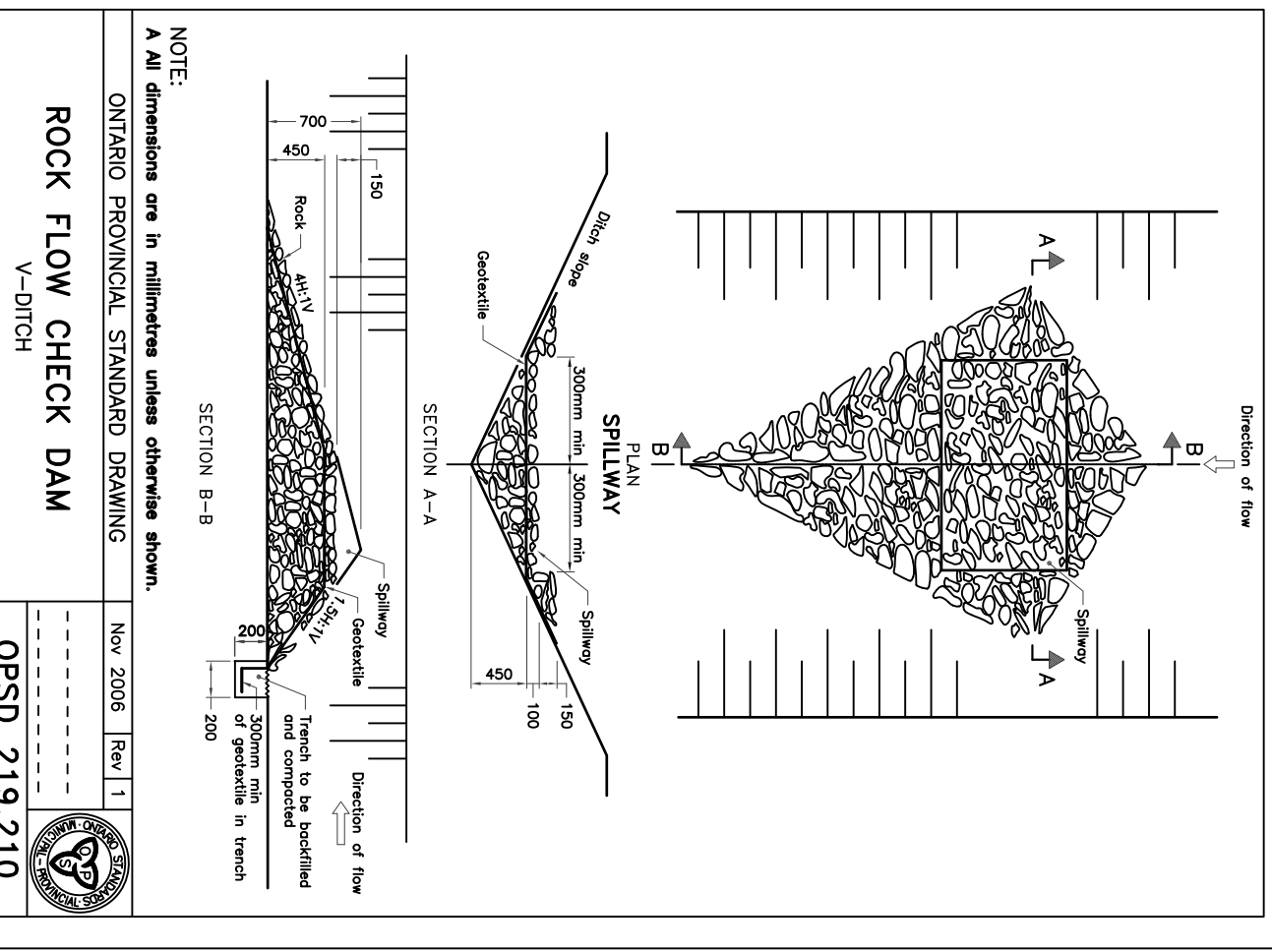
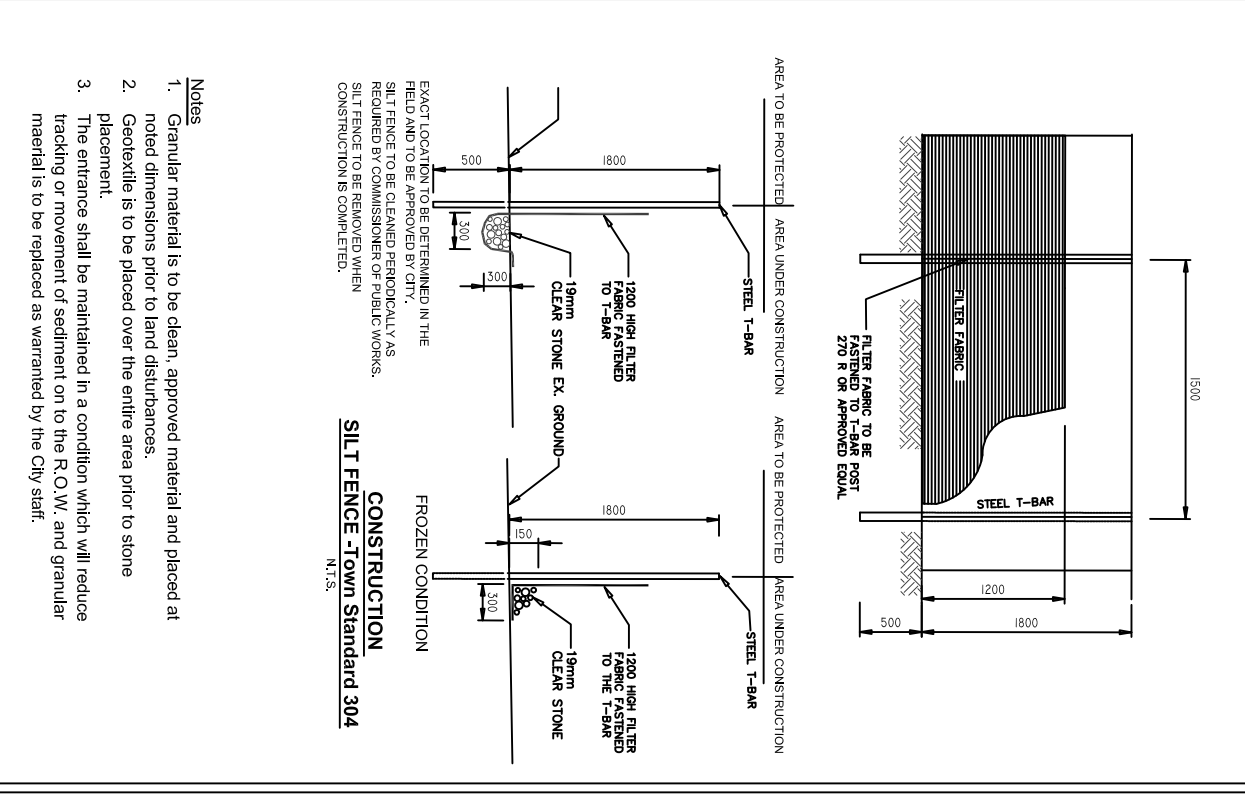
OLD KENNEDY ROAD
P.I.N. 14235-4928 (LT)



SCALE: 1:150
2500 PVC STM 38.5 @ 0.50%



- Erosion and Sediment Control**
- All erosion and sediment control measures shall be implemented prior to the contractor's first cut to the site.
 - 300mm concrete curb and stone kerb shall be installed by seeding.
 - After each significant rainfall, silt and sediment shall be removed from the site.
 - The sediment control measures shall be inspected after each significant rainfall, and silt and sediment shall be removed from the site.
 - Topsoil shall be replaced and compacted after the erosion and sediment control measures are removed.
 - A silt fence (from S10) must be installed around the site property.



LEGEND

- PROF. FIRE HYDRANT
- PROF. STORM CBWH
- PROF. STORM MH
- PROF. SANITARY MANHOLE
- EXIST. SANITARY MANHOLE
- CATCHBASIN
- EXISTING GRADE ELEVATION
- PROPOSED ELEVATION
- PROPOSED ELEVATION
- OVERLAND FLOW ROUTE
- Flow direction to CB
- EXISTING FLOW DIRECTION
- Drainage area to STM - Area number and size in ha
- Drainage Area boundary for sewer design

PROJECT:
Residential Homes
12507 Old Kennedy Road
Caledon, Ontario

EROSION & SEDIMENT CONTROL

PROJECT DATE: May 10, 2021
SCALE: 1:150

DRAWING NAME: SP 18 - 70
DRAWING NO: SSG - 3

REVISION

NO.	REVISION	DATE	BY
1.	1st submission	May 10, 2021	RD

Ram Engineering Inc.
11 92 White Clover Way
Mississauga L5V 1K8
905 567 1215
Email: RamDharamdial@gmail.com

LICENSED PROFESSIONAL ENGINEER
R. DHARAMDIAL
PROVINCE OF ONTARIO
MAY 10 2021