

GENERAL NOTES

The Client and its contractors are responsible for all utility locates and confirming all setbacks, elevations, grades, etc. prior to installation of the constructed works.

The Contractor is to report any discrepancies in writing to the Landscape Architect prior to proceeding with the works to determine the impact and suitability of the proposed works. The Landscape Architect will not be responsible for any unapproved adjustments on site.

Construction of the works must conform to Authority requirements and applicable codes where they have jurisdiction.

All specifications and drawings are instruments of service and are the property and ownership of the Landmark Environmental Group Ltd. As such, the drawings shall not be modified or reproduced without the expressed written consent of Landmark Environmental Group Ltd. or they will be considered void. The said drawings are for Site Plan approval only and may require additional detailing prior to tender and construction.

The Landmark Environmental Group Ltd. is not liable for errors or omissions from the use of these drawings prior to approval, seal, signature and date, and will be considered void.

It is advised that the Contractor contact the Landscape Architect prior to commencement of the construction works to ensure that the Contractor has the latest approved drawings.

The Landmark Environmental Group Ltd. is not responsible for the accuracy of the base drawing information (eg Survey, Architectural, Engineering, etc.). If there are any discrepancies, the Contractor will refer to the appropriate base drawing information and report discrepancies on the Landscape Drawings to the Landscape Architect.

© Copyright Landmark Environmental Group Ltd., 2020.

LEGEND

- Proposed Deciduous Tree
- Plant Key

NO.	DATE	BY	REVISIONS

BASE DATA PROVIDED BY RAM ENGINEERING INC. (Old Kennedy Rd April 1 for Landscape.dwg)

LANDMARK ENVIRONMENTAL GROUP LTD

LANDSCAPE ARCHITECTS & CONSULTING ARBORISTS

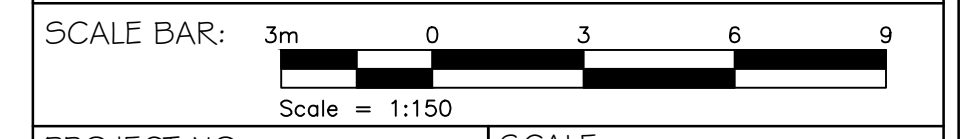
OFFICE: 705-796-1122

info@LEGGroupLtd.com
www.LEGGroupLtd.com

CLIENT: **MR. NAVINDER SINGH LAL**

PROJECT: **12507 OLD KENNEDY RD, CALEDON
CONSENT DEVELOPMENT**

DRAWING: **OVERALL LANDSCAPE PLAN**



PROJECT NO.: LA 499-20	SCALE: 1:150
MUNICIPAL FILE NO.:	DATE: NOV 30-20
DRAWN BY: S.K / J.G	CHECKED BY: J.H
DRAWING No.: L5.0	

PLANT LIST

KEY	QTY	BOTANICAL NAME	COMMON NAME	SIZE/CONDITION
Af*	3	<i>Acer x freemanni</i> 'Autumn Blaze'	Autumn Blaze Freeman's Maple	60mm cal/WB

* DENOTES A STREET TREE

NOTES:

1) DEPICTED ON THIS PLAN ARE THE SPECIES AND THE APPROXIMATE LOCATION OF STREET TREES. ONCE DRIVEWAYS, UTILITIES AND LIGHT STANDARDS HAVE BEEN INSTALLED, THE EXACT LOCATION OF STREET TREES WILL BE DETERMINED ON SITE BY THE LANDSCAPE ARCHITECT AND APPROVED BY THE MUNICIPALITY PRIOR TO PLANTING.

2) MINIMUM CLEARANCE FOR STREET TREES (WHEN TREES ARE PLANTED 1.5m FROM THE CURB)

- 2m FROM WATER HYDRANTS*
- 2m FROM DRIVEWAYS*
- 2m FROM NEIGHBOURHOOD MAILBOXES*
- 3m FROM HYDRO TRANSFORMERS
- 5m FROM STREETLIGHTS
- 1.5m MINIMUM FROM STREET LINE (STREET INTERSECTION AS MEASURED FROM BACK OF CURB) AND BEHIND THE DAYLIGHT TRIANGLE AS PER THE GEOMETRIC DESIGN STANDARDS FOR ONTARIO HIGHWAYS
- 1.8m FROM FACE OF ALL WARNING AND REGULATORY SIGNS

WHEN THE MINIMUM DISTANCES NOTED ABOVE ARE NOT ACHIEVABLE, TREES MAY BE PLANTED IN AN ALTERNATE LOCATION, 0.5m FROM THE PROPERTY LINE (0.9m BEHIND THE SIDEWALK) AND ADJACENT TO ANY FENCES, OR JUST INSIDE THE STREET LINE ON PRIVATE PROPERTY, AS MIGHT BE THE CASE IN A CUL-DE-SAC. IF A TREE IS PLANTED IN AN ALTERNATE LOCATION, THE DISTANCES MARKED WITH AN ASTERISK MUST STILL BE MAINTAINED.

3) THE TREE PITS AND PLANTING BEDS FOR ALL TREES AND SHRUBS LOCATED WITHIN 1m OF UNDERGROUND UTILITIES ARE TO BE HAND DUG.

4) MINIMUM CLEARANCE FOR FENCES: 1m FROM FIRE HYDRANTS