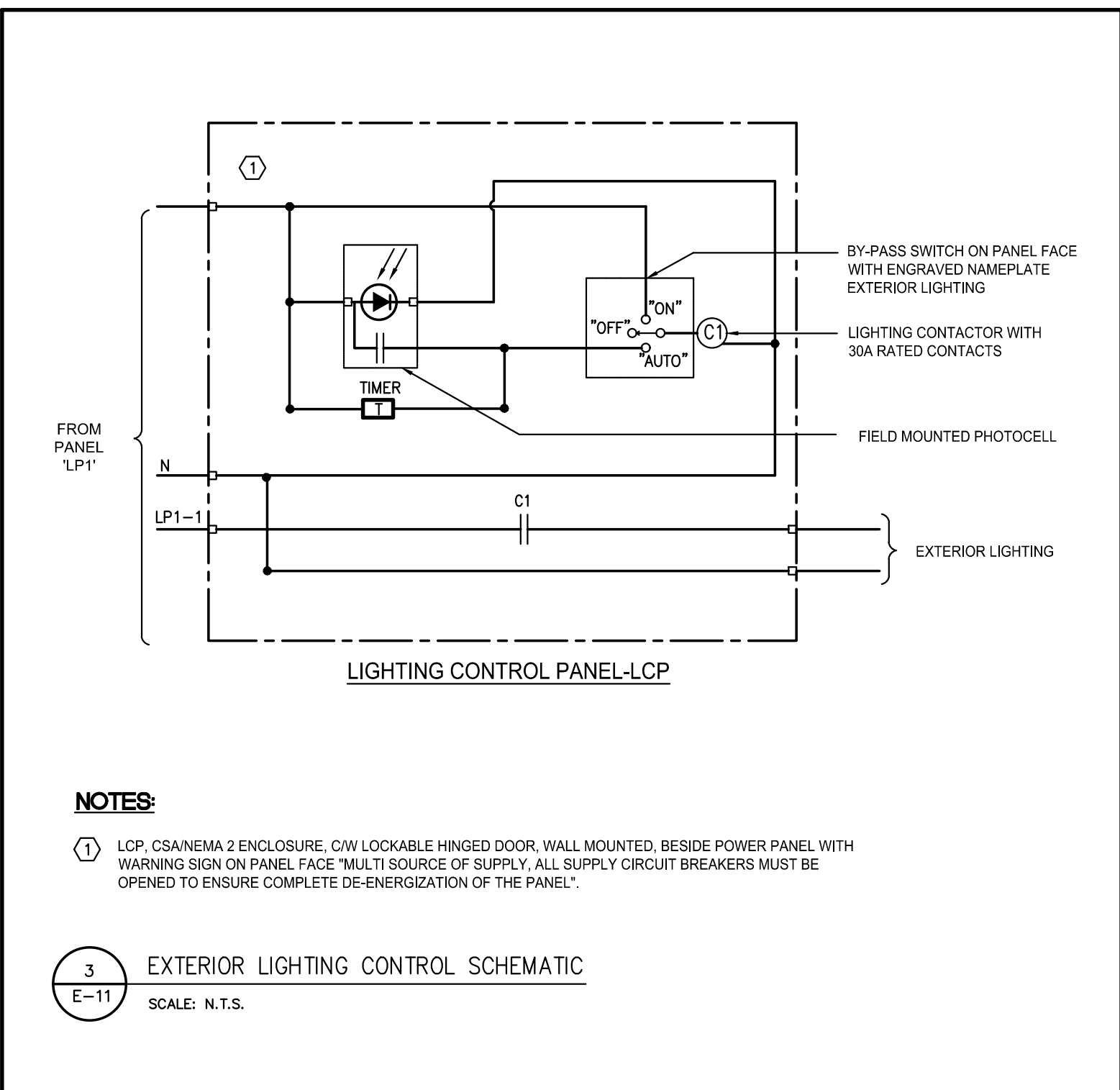


LUMINAIRE SCHEDULE					
TYPE	SYMBOL	DESCRIPTION	LAMP	BALLAST	REMARKS
L51	■	EXTERIOR LED POLE LIGHT ON EXISTING POLE AT 8m AFF, C/W CLEAR FLAT GLASS LENS, TYPE 4F DISTRIBUTION, BACKLIGHT CONTROL, BLACK FINISH. APPLICATION: EXTERIOR	85W LED, 4000K, 9039 LUM	347V ELECTRONIC LED DRIVER	CURRENT LIGHTING BEACON #PWER SERIES OR APPROVED EQUAL.
L51a	■	SAME AS FIXTURE "L1", EXCEPT C/W TYPE 2 DISTRIBUTION. APPLICATION: EXTERIOR	85W LED, 4000K, 8812 LUM	347V ELECTRONIC LED DRIVER	CURRENT LIGHTING BEACON #PWER SERIES OR APPROVED EQUAL.
L52	■	EXTERIOR LED POLE LIGHT, C/W CLEAR FLAT GLASS LENS, LIGHT STANDARD C/W 7m HEIGHT POLE, 1m CONCRETE BASE, TYPE 4F DISTRIBUTION, BACKLIGHT CONTROL, BLACK FINISH. APPLICATION: EXTERIOR	85W LED, 4000K, 9039 LUM	347V ELECTRONIC LED DRIVER	CURRENT LIGHTING BEACON #PWER SERIES OR APPROVED EQUAL.
L52a	■	SAME AS FIXTURE "L2", EXCEPT C/W TYPE 2 DISTRIBUTION. APPLICATION: EXTERIOR	85W LED, 4000K, 8812 LUM	347V ELECTRONIC LED DRIVER	CURRENT LIGHTING BEACON #PWER SERIES OR APPROVED EQUAL.
W1	⊙	EXTERIOR WALL PACK, MOUNTED AT 7700mm AFF. C/W CLEAR FLAT GLASS LENS, TYPE 4 DISTRIBUTION, BLACK FINISH. APPLICATION: EXTERIOR	20.9W LED, 4000K, 2310 LUM	347V ELECTRONIC LED DRIVER	CURRENT LIGHTING EXO #JUNG SERIES OR APPROVED EQUAL.
W1a	⊙	SAME AS FIXTURE "W1", EXCEPT MOUNTED AT 9200mm AFF. APPLICATION: EXTERIOR	51.76W LED, 4000K 5526 LUM	347V ELECTRONIC LED DRIVER	CURRENT LIGHTING EXO #JUNG SERIES OR APPROVED EQUAL.
W2	⊙	EXTERIOR WALL PACK, MOUNTED AT 5500mm AFF. C/W CLEAR FLAT GLASS LENS, TYPE 4 DISTRIBUTION, BLACK FINISH. APPLICATION: EXTERIOR	38.1W LED, 4000K 4070 LUM	347V ELECTRONIC LED DRIVER	CURRENT LIGHTING EXO #JUNG SERIES OR APPROVED EQUAL.
W2a	⊙	SAME AS FIXTURE "W2", EXCEPT C/W 90W LED LAMP. APPLICATION: EXTERIOR	39W LED, 4000K 4000 LUM	347V ELECTRONIC LED DRIVER	CURRENT LIGHTING EXO #JUNG SERIES OR APPROVED EQUAL.
W3	⊙	EXTERIOR WALL PACK, MOUNTED AT 2500mm AFF. C/W CLEAR FLAT GLASS LENS, TYPE 3 DISTRIBUTION, BLACK FINISH. APPLICATION: EXTERIOR	14.9W LED, 4000K 1980 LUM	347V ELECTRONIC LED DRIVER	BEACON LIGHTING VPER WALL SERIES #R01 SERIES OR APPROVED EQUAL.
W4	⊙	EXTERIOR WALL PACK ON EDGE OF CANOPY, ROUND SHAPE, MOUNTED AT 2500mm AFF AT CANOPY EDGE, C/W CLEAR FLAT GLASS LENS, TYPE 4W DISTRIBUTION, BLACK FINISH. APPLICATION: EXTERIOR	19.9W LED, 4000K 2468 LUM	347V ELECTRONIC LED DRIVER	BEACON LIGHTING GEOPAK SERIES #R01 SERIES OR APPROVED EQUAL.
C1	○	6" DIA. EXTERIOR LED DOWNLIGHT, C/W DIA CAST ALUMINUM HOUSING, HIGH PURITY ALUMINUM REFLECTOR, WIDE DISTRIBUTION, C/W CLEAR LENS, BLACK FINISH, LOWER CANOPY IS 2223mm AFF. APPLICATION: EXTERIOR CANOPY	19.5W LED LAMP, 4000K, 2552LUM	347V ELECTRONIC LED DRIVER	HUBBELL PRESCOTTE #LFR-GRD SERIES OR APPROVED EQUAL.



title SITE LIGHTING LAYOUT & DETAILS	project & drawing no. 24038 <b>E-11</b>
--	---