



FIRE ACCESS ROUTE SIGNAGE SHALL BE PROVIDED AS REQUIRED BY BY-LAW 2015-056

ALL ACCESSIBLE PARKING SIGN SHALL BE IN ACCORDANCE WITH THE DESIGN, SIZE AND ANY OTHER SPECIFICATIONS REQUIRED BY SECTION 11 OF REG.581:ACCESSIBLE PARKING FOR PERSONS WITH DISABILITIES WITHIN THE HIGHWAY TRAFFIC ACT.

MOLOK SYSTEM M-5000

<http://www.molokna.com/#technology>



TYPE "A"



TYPE "B"

NOTES:

- BEARINGS ARE GRID BEARINGS AND ARE DERIVED FROM GPS OBSERVATIONS AND ARE REFERRED TO THE UTM PROJECTION, ZONE 17. NAD 83-CRS (2010) ADJUSTMENT.
- DISTANCES SHOWN ON THE PLAN ARE ADJUSTED GROUND DISTANCES AND CAN BE CONVERTED TO UTM GRID DISTANCES BY MULTIPLYING BY AN AVERAGED COMBINED SCALE FACTOR OF 0.999700.

BOLTON HIGHWAY COMMERCIAL
PIN 14350-0096

NOTE: ALL GAS AND UTILITY LINES AND METERS ARE LOCATED AWAY FROM PUBLIC VIEWS PARTICULARLY VIEWS FROM GEORGE BOLTON PARKWAY, HIGHWAY 50 AND MAIN PARKING AREAS.

NOTE: FIRE ROUTE SIGNS ARE TO BE PROVIDED IN ACCORDANCE WITH TOWN OF CALEDON BY-LAW 2015-056.

NOTE: THE ACCESSIBLE PARKING SIGNAGE SHALL BE NO GREATER THAN 2 METRES IN HEIGHT AND NO LESS THAN 1 METRE IN HEIGHT AS MEASURED FROM THE SURFACE OF THE PARKING LOT.

NOTE: WHERE PARKING AREAS ARE ILLUMINATED, THE LIGHTING FIXTURES SHALL BE PROVIDED IN ACCORDANCE WITH THE FOLLOWING PROVISIONS: 0 NO PART OF THE LIGHTING FIXTURE SHALL BE MORE THAN 1M ABOVE GRADE AND NO CLOSER THAN 4.5M TO ANY LOT LINE, AND 0 LIGHTING FIXTURES SHALL BE INSTALLED IN SUCH A MANNER THAT ALL LIGHT EMITTED BY THE FIXTURE EITHER DIRECTLY FROM THE LAMP OR A DIFFUSING ELEMENT OR INDIRECTLY BY REFLECTION OR REFRACTION FROM ANY PART OF THE FIXTURE IS PROJECTED BELOW THE LAMP AND ONTO THE LOT THE LIGHTING IS INTENDED TO SERVE.

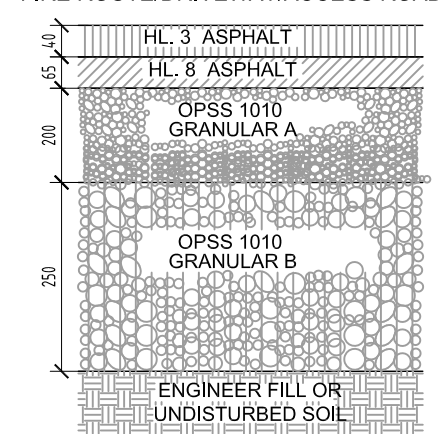
0 DIRECTED LIGHTING AT THE ENTRANCES AND IN CLOSE PROXIMITY TO THE ACCESSIBLE PARKING SPACES SHALL BE A MINIMUM LIGHTING LEVEL OF 35 LUX.

GENERAL NOTES:

REFER TO GEO TECHNICAL REPORT FOR HEAVY/MEDIUM/LIGHT DUTY ASPHALT SURFACE CONSTRUCTION

- ALL GRANULAR FILL MATERIAL SHALL BE COMPACTED TO 98% SPMD.
- TOPSOIL, DEBRIS & LOOSE MATERIALS TO BE REMOVED FROM ALL SUBBASE MATERIALS.
- WHERE NEW PAVING ABUTS EXISTING ASPHALT PAVING, MATCH FINISH GRADE AND SLOPE.
- PROVIDE PAVEMENT MARKINGS, SYMBOLS, DIRECTION ARROWS, AS INDICATED ON PLAN.
- SHOULD THE PROPOSED ROADS BE CONSTRUCTED DURING WET SEASONS, THE GRANULAR SUBBASE SHOULD BE REPLACED BY AN EQUAL THICKNESS OF COMPACTED SIZE 50mm CRUSHER-RUN LIMESTONE.

FIRE ROUTE/DRIVEWAY/ACCESS ROAD



METRIC:

DISTANCES SHOWN ON THIS PLAN ARE IN METRES AND

BENCHMARK:

STATION No. 758056: CONCRETE BRIDGE CARRYING HIGHWAY 50 OVER CPR, 2.0 KM SOUTH OF JUNCTION OF HIGHWAY 50 AND KING STREET IN THE TOWN OF CALEDON (BOLTON) AND 0.4 KM NORTH OF SOUTH JUNCTION OF HIGHWAY 50 AND HEALY ROAD. TABLET IS SET HORIZONTALLY IN N.E. FACE OF FOOTING OF PIER COLUMN (2ND SOUTH EAST OF TRACKS), 1.4m BELOW TOP OF FOOTING, 1.8m SOUTH EAST OF NORTH WEST. END, 73 CM ABOVE GROUND LEVEL AND 4.3 KM EAST OF CENTERLINE OF HIGHWAY 50.

VERTICAL (GEODAL) CONTROL DATA:

DATUM: CGVD28-28
VERTICAL ORDER: FIRST ORDER
ELEVATION: 251.263m

TB1 = CUT CROSS IN SIDEWALK, 239.58m

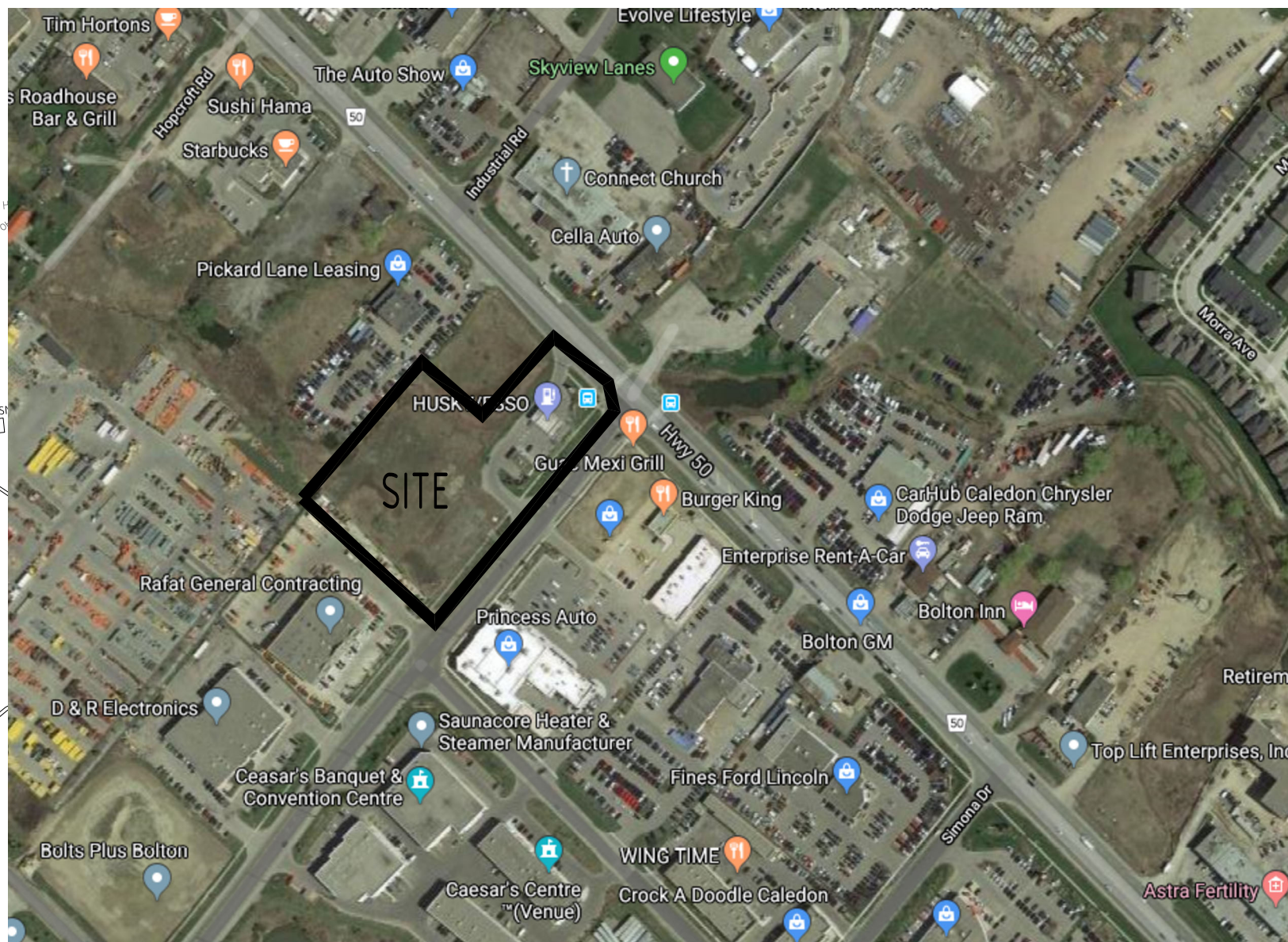
TBM2 = CUT CROSS IN SIDEWALK, 238.59m.

SITE INFORMATION: - CHB ZONING		
	REQUIREMENTS	PROPOSED
MIN. LOT AREA	2750 SQ.M.	12,616 SQ.M.
MIN. LOT FRONTAGE (HIGHWAY 50)	40.0 M	52.5 M
MAX. BUILDING AREA	30%	111 % (120+1280.4 SQM)
MIN. FRONT YARD SETBACK (HIGHWAY 50)	18 M	20.0 M (EXISTING)
MIN. EXTERIOR SIDE YARD (GEORGE BOLTON PARKWAY)	18 M	3 M (EXISTING)
MIN. REAR SETBACK	10.5 M	22.5 M
MIN. INTERIOR SIDE YARD SETBACK	7.5 M	23.4 M
MOTOR VEHICLE GAS BAR SETBACK		
FROM ANY LOT LINE	6.0 M	6.0 M
FROM ANY SIGHT ANGLE	3.0 M	7.0 M
MAX. BUILDING HEIGHT	10.5 M	20.32 M
LANDSCAPING AREA (MINIMUM)	20% (2523.2 SQM)	32.0% (4034 SQM)
RETAIL STORE, ACCESSORY	93 SQM	120 SQM (EXISTING)
PLANTING STRIP LOCATION	-	FRONT AND EXTERIOR LOT LINE
MIN. PLANTING STRIP WIDTH	6.0 M	3.0 M (EXISTING)
MIN. PARKING SPACE SETBACKS		
FROM ANY STREET LINE	6.0 M	3.0 M (EXISTING)
FROM ANY OTHER LOT LINE	1.5 M	1.5 M
MIN. PARKING SPACES PER USE:		
HOTEL - @ 1 SPACE PER ROOM, FOR 118 ROOMS	118 SPACES + 6 SPACES +	117 SPACES (PROPOSED)
MOTOR VEHICLE GAS BAR - @ 1 SPACE PER 20 SQM	17 SPACES = 141 SPACES	+ 5 SPACES (EXISTING)
FOR 120 SQM (EXISTING)		= 122 SPACES
BREAKFAST (NET FLOOR AREA = 162 SQM)		
@ 1 SPACE FOR 10 SQM		
MIN. LOADING SPACES	1	1
MIN. DELIVERY SPACES	8	5

▲ DENOTES ENTRY/EXIT TO BUILDING	■ DENOTES TACTILE SURFACE (1220X610)
■ DENOTES CATCH BASIN MANHOLE	■ PAINTED LINES ON ASPHALT SURFACE
■ DENOTES CATCH BASIN	LS ■ DENOTES LIGHT STANDARD
○ DENOTES SANITARY MANHOLE	■ DENOTES HEAVY DUTY ASPHALT

REFER TO THE SITE GRADING PLAN PREPARED BY FLORA DESIGN INC.

ALL INFORMATION, WORKS, AND FEATURES ARE TO BE COORDINATED WITH THE ARCHITECTURAL SITE PLAN, SITE GRADING AND SERVICING PLAN, AND LANDSCAPE PLAN BY GC PRIOR TO STARTING OF CONSTRUCTION.



PLAN OF SURVEY WITH TOPOGRAPHIC INFORMATION
**PART OF LOT 3,
CONCESSION 6**
GEOGRAPHIC TOWNSHIP OF ALBION
TOWN OF CALEDON
REGIONAL MUNICIPALITY OF PEEL

PROPOSED KEY PLAN

SCALE: NTS



1 st RESUBMISSION FOR SPA	15-06-2022
2 nd RESUBMISSION FOR SPA	01-03-2022
3 rd RESUBMISSION FOR SPA	25-08-2021
ISSUED FOR SPA	09-11-2020

SPA -2020-0044

ATRIX
ARCHITECTS INC.
1109 BRITANNIA RD E, MISSISSAUGA
ON L4W 3X1 PHONE 905 564 1154
FAX 888 501 0265

ALL INFORMATION AND DIMENSIONS MUST BE CHECKED AND VERIFIED ON SITE. DO NOT SCALE DRAWINGS. ANY VARIANCES OR DISCREPANCIES MUST BE REPORTED TO THE DESIGNER PRIOR TO COMMENCEMENT OF THE WORK. ALL WORK SHALL BE CARRIED OUT IN ACCORDANCE WITH ALL BY-LAWS AND CODES HAVING JURISDICTION OVER THIS CONSTRUCTION SITE. THE DESIGN AND CONTRACT DRAWINGS ARE THE COPYRIGHT OF THE DESIGNER AND MAY NOT BE REPRODUCED, REUSED OR ALTERED WITHOUT THE WRITTEN PERMISSION OF THE DESIGNER.

PROJECT PROPOSED MARRIOTT HOTEL	DRAWN BY	NL
12476 HIGHWAY 50 CALEDON, ON	SCALE	
	PROJECT NO.	2001
	DRAWING TITLE & NO.	PROPOSED FLOOR PLANS A000

TOWN OF CALEDON
PLANNING
RECEIVED
January 31, 2023

PROPOSED SITE PLAN

SCALE: 1:300

