

SITE INFORMATION: - CHB ZONING		
	REQUIREMENTS	PROPOSED
MIN. LOT AREA	2750 SQ.M.	12,616 SQ.M.
MIN. LOT FRONTAGE (HIGHWAY 50)	40.0 M	52.5 M
MAX. BUILDING AREA	30%	10.53 % (120x1209.4 SQM)
MIN. FRONT YARD SETBACK (HIGHWAY 50)	18 M	20.0 M (EXISTING)
MIN. EXTERIOR SIDE YARD (GEORGE BOLTON PARKWAY)	18 M	3 M (EXISTING)
MIN. REAR SETBACK	10.5 M	22.5 M
MIN. INTERIOR SIDE YARD SETBACK	7.5 M	23.7 M
MOTOR VEHICLE GAS BAR SETBACK		
FROM ANY LOT LINE	6.0 M	6.0 M
FROM ANY SIGHT ANGLE	3.0 M	7.0 M
MAX. BUILDING HEIGHT	10.5 M	20.32 M
LANDSCAPING AREA (MINIMUM)	20% (2523.2 SQM)	32.1% (4050 SQM)
RETAIL STORE, ACCESSORY	93 SQM	120 SQM (EXISTING)
PLANTING STRIP LOCATION	-	FRONT AND EXTERIOR LOT LINE
MIN. PLANTING STRIP WIDTH	6.0 M	3.0 M (EXISTING)
MIN. PARKING SPACE SETBACKS		
FROM ANY STREET LINE	6.0 M	3.0 M (EXISTING)
FROM ANY OTHER LOT LINE	1.5 M	1.5 M
MIN. PARKING SPACES PER USE:		
HOTEL - @ 1 SPACE PER ROOM, FOR 119 ROOMS	119 SPACES + 6 SPACES	119 SPACES (PROPOSED)
MOTOR VEHICLE GAS BAR - @ 1 SPACE PER 20 SQM FOR 120 SQM (EXISTING)	= 125 SPACES	+ 5 SPACES (EXISTING)
		= 124 SPACES
MIN. LOADING SPACES	1	1
MIN. DELIVERY SPACES	1	1

- NOTES:
- BEARINGS ARE GRID BEARINGS AND ARE DERIVED FROM GPS OBSERVATIONS AND ARE REFERRED TO THE UTM PROJECTION, ZONE 17, NAD 83-CSR5 (2010) ADJUSTMENT.
  - DISTANCES SHOWN ON THE PLAN ARE ADJUSTED GROUND DISTANCES AND CAN BE CONVERTED TO UTM GRID DISTANCES BY MULTIPLYING BY AN AVERAGED COMBINED SCALE FACTOR OF 0.999700.

METRIC:  
DISTANCES SHOWN ON THIS PLAN ARE IN METRES AND

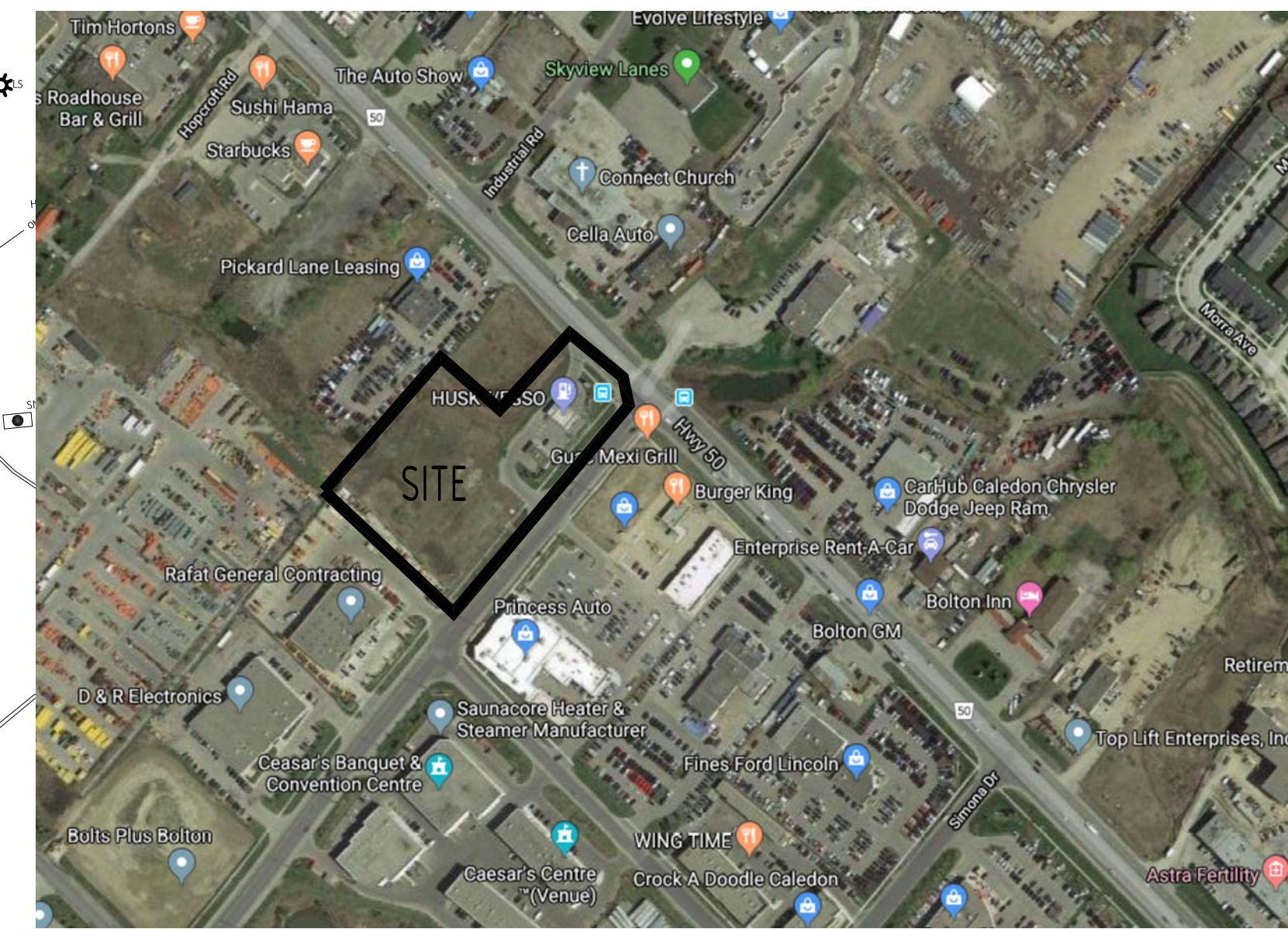
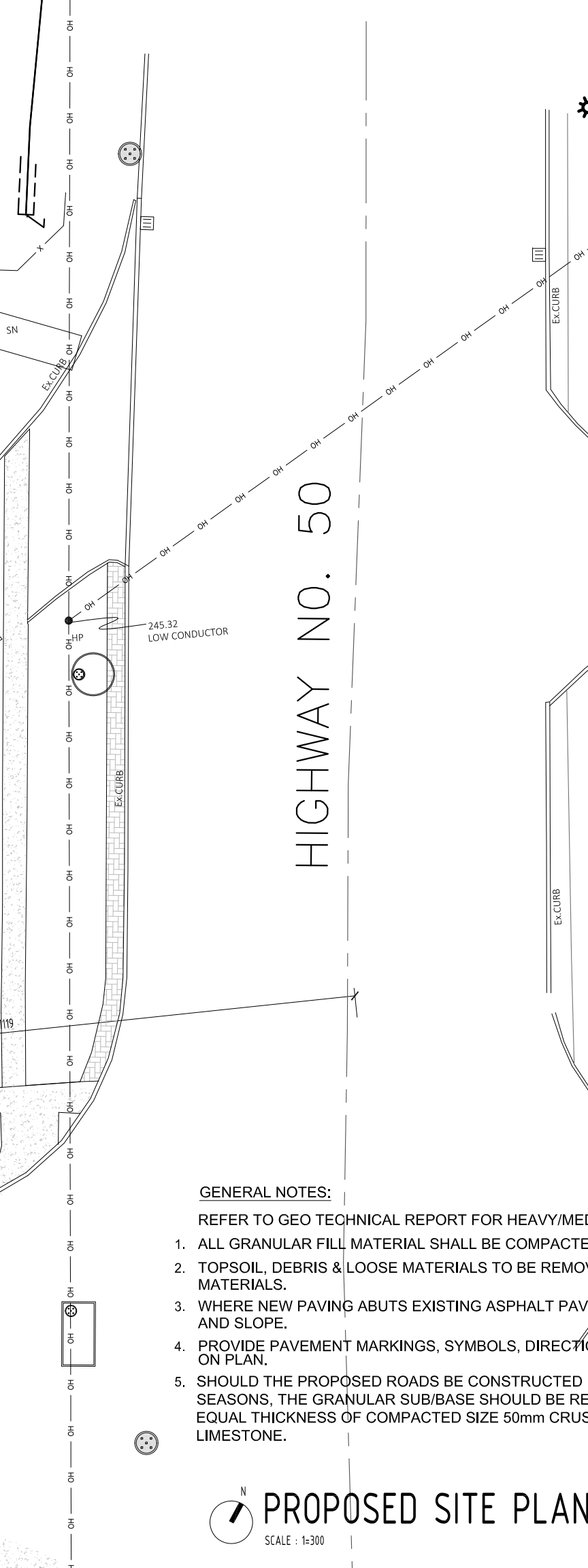
BENCHMARK:  
STATION No. 758056: CONCRETE BRIDGE CARRYING HIGHWAY 50 OVER CPR, 2.0 KM SOUTH OF JUNCTION OF HIGHWAY 50 AND KING STREET IN THE TOWN OF CALEDON (BOLTON) AND 0.4 KM NORTH OF SOUTH JUNCTION OF HIGHWAY 50 AND HEALY ROAD. TABLET IS SET HORIZONTALLY IN N.E. FACE OF FOOTING OF PIER COLUMN (2ND SOUTH EAST OF TRACKS), 1.4m BELOW TOP OF FOOTING, 1.8m SOUTH EAST OF NORTH WEST. END, 73 CM ABOVE GROUND LEVEL AND 4.3 KM EAST OF CENTERLINE OF HIGHWAY 50.

VERTICAL (GEOIDAL) CONTROL DATA:  
DATUM: CGVD28-28  
VERTICAL ORDER: FIRST ORDER  
ELEVATION: 251.263m

TB1 = CUT CROSS IN SIDEWALK, 239.58m  
TBM2 = CUT CROSS IN SIDEWALK, 238.59m

- ▲ DENOTES ENTRY/EXIT TO BUILDING  
● DENOTES CATCH BASIN MANHOLE  
■ DENOTES CATCH BASIN  
○ DENOTES SANITARY MANHOLE
- DENOTES TACTILE SURFACE (1220X610)  
▨ PAINTED LINES ON ASPHALT SURFACE  
LS ○ DENOTES LIGHT STANDARD  
100 ○ DENOTES HEAVY DUTY ASPHALT

REFER TO THE SITE GRADING PLAN PREPARED BY FLORA DESIGN INC.  
ALL INFORMATION, WORKS, AND FEATURES ARE TO BE COORDINATED WITH THE ARCHITECTURAL SITE PLAN, SITE GRADING AND SERVICING PLAN, AND LANDSCAPE PLAN BY GC PRIOR TO STARTING OF CONSTRUCTION.



PLAN OF SURVEY WITH TOPOGRAPHIC INFORMATION  
**PART OF LOT 3,  
CONCESSION 6**  
GEOGRAPHIC TOWNSHIP OF ALBION  
**TOWN OF CALEDON**  
**REGIONAL MUNICIPALITY OF PEEL**

PROPOSED KEY PLAN  
SCALE: 1:100



**ANTRIX**  
ARCHITECTS INC.  
1109 BRITANNIA RD E., MISSISSAUGA  
ON L4W 3X1 PHONE: 905.564.1154  
FAX: 888.501.0265

PROJECT  
PROPOSED MARRIOTT HOTEL  
12476 HIGHWAY 50  
CALEDON, ON

DRAWN BY	NL
SCALE	
PROJECT NO.	2001
DRAWING TITLE & NO.	PROPOSED FLOOR PLANS A000

- GENERAL NOTES:
- REFER TO GEO TECHNICAL REPORT FOR HEAVY/MEDIUM/LIGHT DUTY ASPHALT SURFACE CONSTRUCTION
- ALL GRANULAR FILL MATERIAL SHALL BE COMPACTED TO 98% SPMD.
  - TOPSOIL, DEBRIS & LOOSE MATERIALS TO BE REMOVED FROM ALL SUBBASE MATERIALS.
  - WHERE NEW PAVING ABUTS EXISTING ASPHALT PAVING, MATCH FINISH GRADE AND SLOPE.
  - PROVIDE PAVEMENT MARKINGS, SYMBOLS, DIRECTION ARROWS, AS INDICATED ON PLAN.
  - SHOULD THE PROPOSED ROADS BE CONSTRUCTED DURING WET SEASONS, THE GRANULAR SUB/BASE SHOULD BE REPLACED BY AN EQUAL THICKNESS OF COMPACTED SIZE 50mm CRUSHER-RUN LIMESTONE.

**TOWN OF CALEDON  
PLANNING  
RECEIVED  
Sept.29, 2020**

PROPOSED SITE PLAN  
SCALE: 1:300