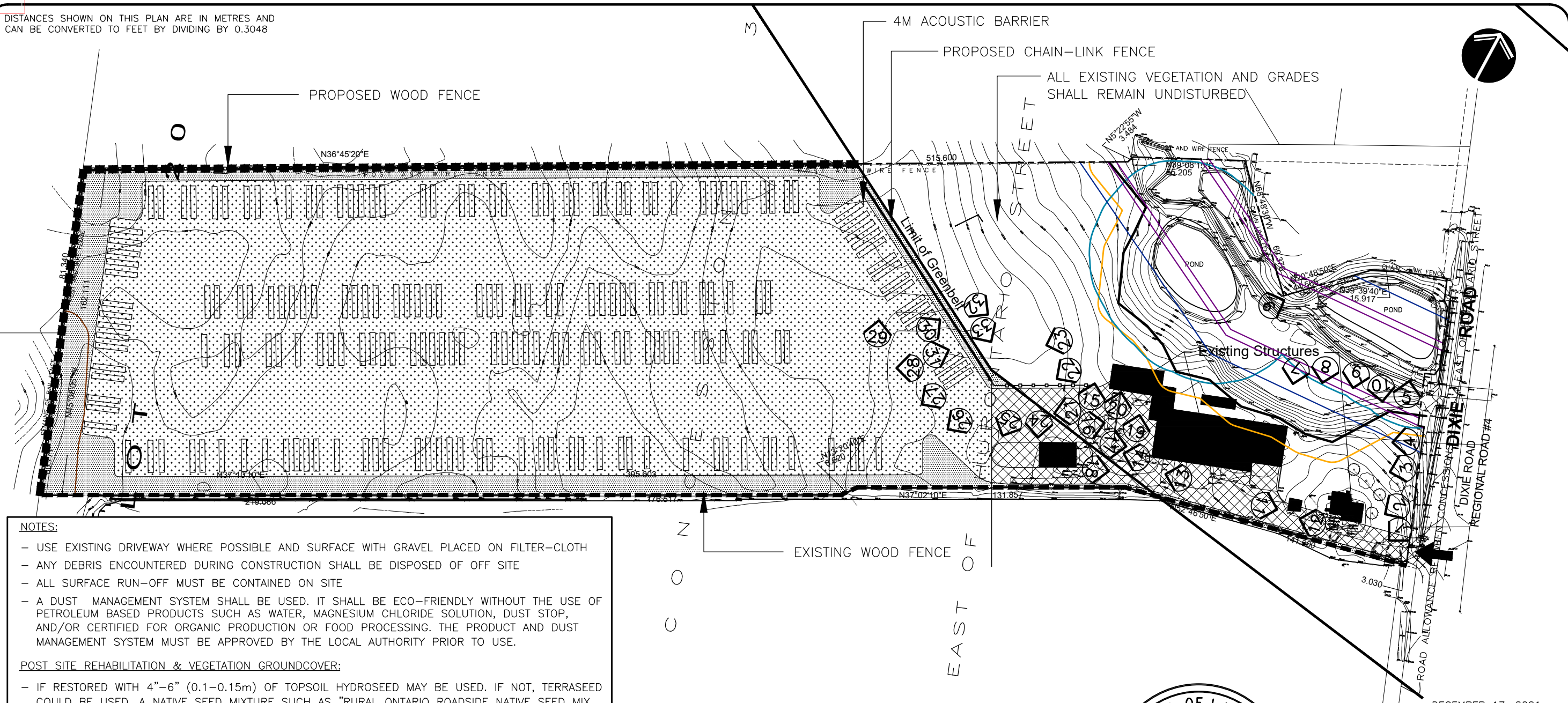


DISTANCES SHOWN ON THIS PLAN ARE IN METRES AND CAN BE CONVERTED TO FEET BY DIVIDING BY 0.3048



**NOTES:**

- USE EXISTING DRIVEWAY WHERE POSSIBLE AND SURFACE WITH GRAVEL PLACED ON FILTER-CLOTH
- ANY DEBRIS ENCOUNTERED DURING CONSTRUCTION SHALL BE DISPOSED OF OFF SITE
- ALL SURFACE RUN-OFF MUST BE CONTAINED ON SITE
- A DUST MANAGEMENT SYSTEM SHALL BE USED. IT SHALL BE ECO-FRIENDLY WITHOUT THE USE OF PETROLEUM BASED PRODUCTS SUCH AS WATER, MAGNESIUM CHLORIDE SOLUTION, DUST STOP, AND/OR CERTIFIED FOR ORGANIC PRODUCTION OR FOOD PROCESSING. THE PRODUCT AND DUST MANAGEMENT SYSTEM MUST BE APPROVED BY THE LOCAL AUTHORITY PRIOR TO USE.

**POST SITE REHABILITATION & VEGETATION GROUNDCOVER:**

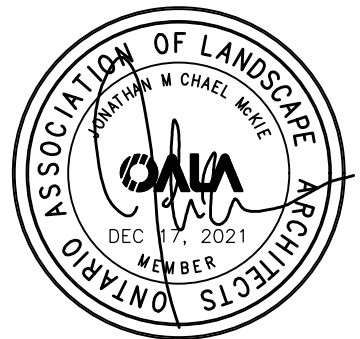
- IF RESTORED WITH 4"-6" (0.1-0.15m) OF TOPSOIL HYDROSEED MAY BE USED. IF NOT, TERRASEED COULD BE USED. A NATIVE SEED MIXTURE SUCH AS "RURAL ONTARIO ROADSIDE NATIVE SEED MIX (8145)" FROM OSC SEEDS WITH A NATIVE NURSE CROP SUCH AS RYE OR OATS APPLIED AT 22-25kg/ha (21-23lbs/acre). THE SEED MIXTURE MUST BE APPROVED BY THE LOCAL AUTHORITY PRIOR TO USE.

**LEGEND**

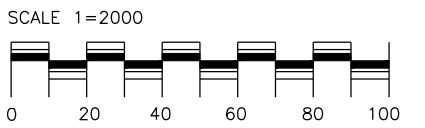
	PROPERTY LINE		GRAVEL TRUCK PARKING AREA
	PROPOSED CHAIN-LINK FENCE		VEGETATION GROUNDCOVER
	EXISTING WOOD FENCE		GRAVEL TRUCK ENTRANCE
	PROPOSED WOOD FENCE		
	PICTURE LOCATION		

**Schedule of Land Use**

Parking Area	6.79 ha
Landscaped Area	2.15 ha
Environmental Area	1.76 ha
<b>Total Area</b>	<b>10.70 ha</b>



DECEMBER 17, 2021  
**CONCEPTUAL TRANSPORT TRUCK/TRAILER PARKING LAYOUT**  
 12434 DIXIE ROAD  
 Town of Caledon  
 Regional Municipality of Peel



Prepared For:  
**MGP** Malone Given Parsons  
 140 Renfrew Drive, Suite 201 | Markham, ON | L3R 6B3  
 905 513 0170 | mgp.ca

**M&M Design Consultants**  
  
 53 Doris Drive  
 Toronto, Ontario, M4B 3C7  
 (416) 453-2803  
 jonathan.mckie@gmail.com  
 www.mandmdesignconsultants.ca  
 © M&M DESIGN CONSULTANTS 2021

MGP File: 19-2852





Image 1



Image 2



Image 3

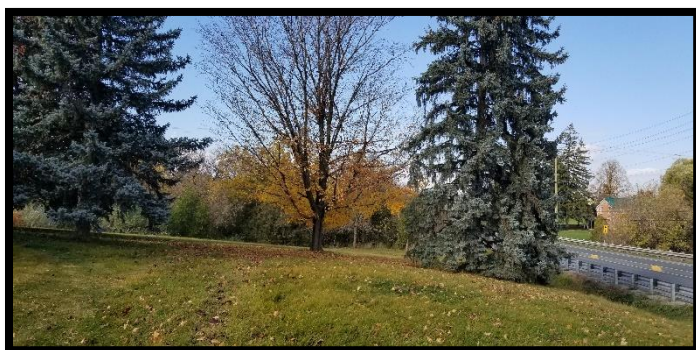


Image 4





Image 5



Image 6



Image 7



Image 8



Image 9



Image 10



Image 11



Image 12







Image 13

Image 14



Image 15

Image 16



Image 17

Image 18





Image 19



Image 20



Image 21



Image 22



Image 23



Image 24



Image 25

Image 26





Image 27



Image 28

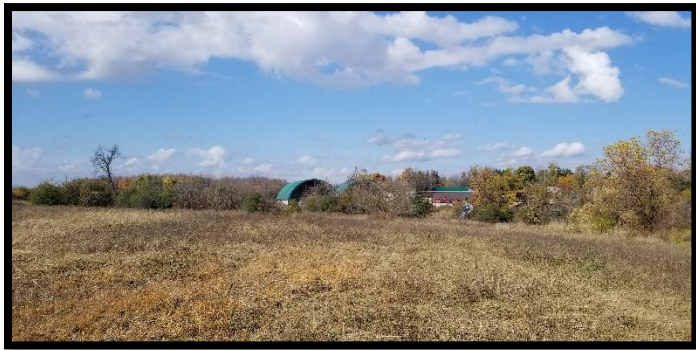


Image 29



Image 30



Image 31



Image 32



**Image 33**