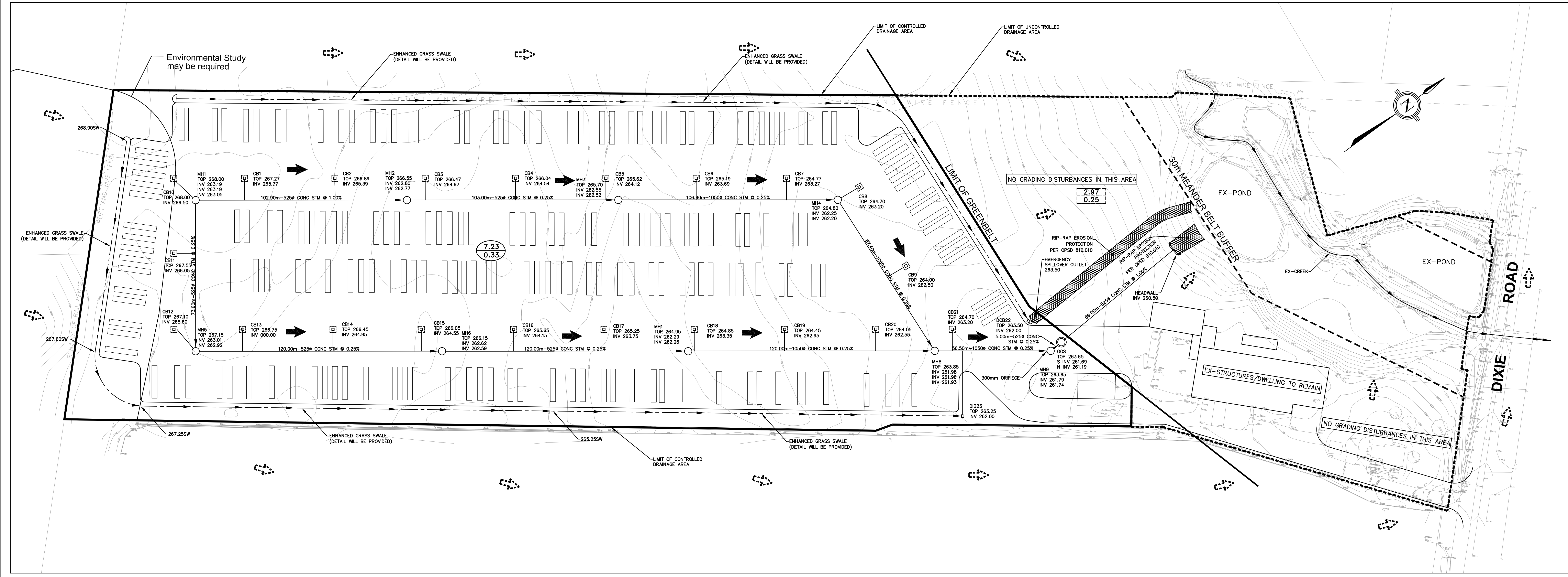


- LEGEND:**
- EXISTING CATCHBASIN
 - EXISTING SANITARY MANHOLE
 - EXISTING STORM MANHOLE
 - EXISTING HYDRANT
 - PROPOSED SANITARY MANHOLE
 - PROPOSED STORM MANHOLE
 - PROPOSED CATCHBASIN
 - VALVE & CHAMBER
 - HYDRANT & VALVE
 - 0.40 CONTROLLED DRAINAGE AREA (h_a)
 - 0.75 RUNOFF COEFFICIENT
 - 15.10 UNCONTROLLED DRAINAGE AREA (h_a)
 - 0.25 RUNOFF COEFFICIENT
 - PROPOSED OVERLAND FLOW DIRECTION
 - EXISTING OVERLAND FLOW
 - PROPOSED DRAINAGE AREA
 - EXISTING DRAINAGE AREA
 - EXTERNAL DRAINAGE AREA
 - PROPOSED ENHANCED GRASS SWALE

GRADING PLAN



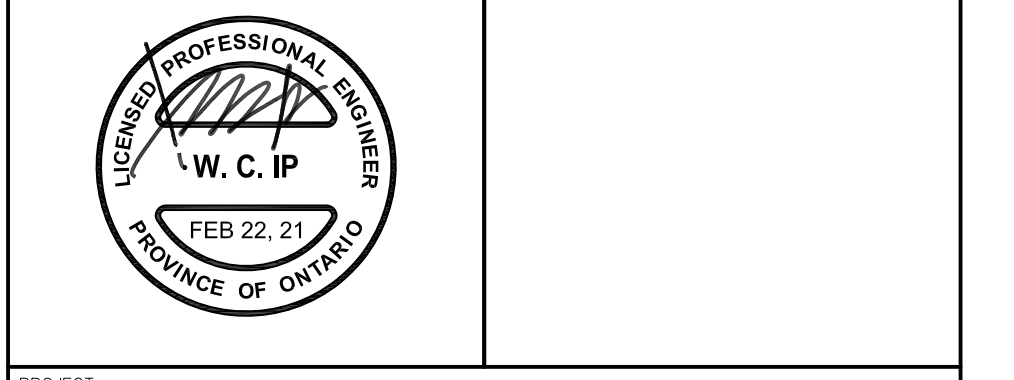
REVISIONS				
No.	BY	DATE	REVISION	CONS. TOWN CHECKED APPRO'D
1				

APPROVED FOR CONSTRUCTION
THIS APPROVAL CONSTITUTES A GENERAL REVIEW AND DOES NOT CERTIFY DIMENSIONAL ACCURACY.
THIS APPROVAL IS SUBJECT TO THE FURTHER CERTIFICATION OF THE "AS CONSTRUCTED" WORKS BY A REGISTERED PROFESSIONAL ENGINEER OF THE PROVINCE OF ONTARIO.

DATE: _____ APPROVED BY: _____
H. MUNIZ, P.ENG.
Town Engineer

ELEVATION NOTES
ELEVATION SHOWN HEREON ARE GEODETIC AND DERIVED FROM THE TOWN OF CALEDON BENCHMARKS.

LOCAL BENCHMARKS
NO. 00519735056 ELEVATION = 277.870 METRES AND NO. 00819778416 ELEVATION = 318.849 METRES



DESIGNED BY: _____ APPROVED BY: _____

PROJECT:
TRANSPORT TRUCK/TRAILER PARKING
12434 DIXIE ROAD
TOWN OF CALEDON



STORM SERVICING PLAN

SERVICING & GRADING PLAN

SCALE: 1:750	PROJECT No. 20-034
DESIGNED BY: M.N.	DRAWN BY: MAEL CAD
CHECKED BY: A.J.	DATE: JANUARY 2021
	PLAN No. SGR-1