

**STORM SEWER STRUCTURE INVENTORY**

MH #	MH DIAMETER	MH OPSD	FRAME OPSD	TOP ELEV.	INVERTS
EX. MH12	1500mmØ	OPSD 701.011	OPSD 401.010	267.61	NE 264.00 (750mmØ) NE 265.50 (900mmØ) NW 263.85 (900mmØ)
MH1	2300mmØ	OPSD 701.013	OPSD 401.010	268.75	SE 265.65 (900mmØ) SW 265.57 (900mmØ)
MH2	2300mmØ	OPSD 701.013	OPSD 401.010	269.97	SE 265.99 (900mmØ) NE 266.05 (900mmØ) NW 265.97 (900mmØ)
MH3	1500mmØ	OPSD 701.011	OPSD 401.010	270.25	SE 266.27 (900mmØ) SW 266.90 (250mmØ) NW 266.25 (900mmØ)
MH4	1500mmØ	OPSD 701.011	OPSD 401.010	270.28	SE 266.63 (900mmØ) SW 267.23 (250mmØ) NW 266.58 (900mmØ)
MH5	1800mmØ	OPSD 701.012	OPSD 401.010	270.15	NE 266.85 (900mmØ) NW 266.80 (900mmØ)
MH6	1500mmØ	OPSD 701.011	OPSD 401.010	270.11	NE 267.01 (900mmØ) NW 267.89 (300mmØ) SE 267.59 (300mmØ) SW 266.99 (900mmØ)
MH7	1500mmØ	OPSD 701.011	OPSD 401.010	270.11	NE 267.24 (900mmØ) NW 268.12 (300mmØ) SE 267.82 (300mmØ) SW 267.22 (900mmØ)
MH8	1500mmØ	OPSD 701.011	OPSD 401.010	270.12	NE 267.50 (825mmØ) NW 268.32 (300mmØ) SE 268.02 (300mmØ) SW 267.42 (900mmØ)
MH9	1500mmØ	OPSD 701.011	OPSD 401.010	270.13	NE 267.75 (750mmØ) SE 268.20 (300mmØ) NW 268.50 (300mmØ) SW 267.68 (825mmØ)
MH10	1200mmØ	OPSD 701.010	OPSD 401.010	270.13	NE 268.08 (600mmØ) SE 268.38 (300mmØ) NW 268.68 (300mmØ) SW 267.59 (750mmØ)
MH11	1200mmØ	OPSD 701.010	OPSD 401.010	270.26	N 268.54 (300mmØ) SE 268.59 (250mmØ) SW 268.24 (600mmØ)
MH12	1500mmØ	OPSD 701.011	OPSD 401.010	270.42	NE 266.22 (900mmØ) NW 266.86 (250mmØ) SE 267.10 (250mmØ) SW 266.21 (900mmØ)
MH13	1500mmØ	OPSD 701.011	OPSD 401.010	270.41	NE 266.46 (900mmØ) SE 267.34 (300mmØ) SW 266.44 (900mmØ)
MH14	1500mmØ	OPSD 701.011	OPSD 401.010	270.35	NE 266.70 (900mmØ) NW 267.33 (250mmØ) SE 267.58 (300mmØ) SW 266.68 (900mmØ)
MH17	1500mmØ	OPSD 701.011	OPSD 401.010	270.52	SE 267.48 (675mmØ) SW 267.40 (750mmØ)
MH18	1200mmØ	OPSD 701.010	OPSD 401.010	270.64	SE 267.88 (525mmØ) NW 267.73 (675mmØ)
MH19	1200mmØ	OPSD 701.010	OPSD 401.010	270.84	S 268.29 (250mmØ) NW 268.07 (525mmØ)

**SANITARY SEWER STRUCTURE INVENTORY**

MH #	MH DIAMETER	MH OPSD	FRAME OPSD	TOP ELEV.	INVERTS
EX. MH12A	1200mmØ	OPSD 701.010	OPSD 401.010	268.41	NW 265.57 (250mmØ) E 265.62 (250mmØ)
MH1A	1200mmØ	OPSD 701.010	OPSD 401.010	269.20	SE 265.84 (250mmØ) W 265.79 (250mmØ)
MH2A	1200mmØ	OPSD 701.010	OPSD 401.010	270.27	NE 267.73 (250mmØ) NE 268.28 (250mmØ) NW 266.20 (250mmØ)

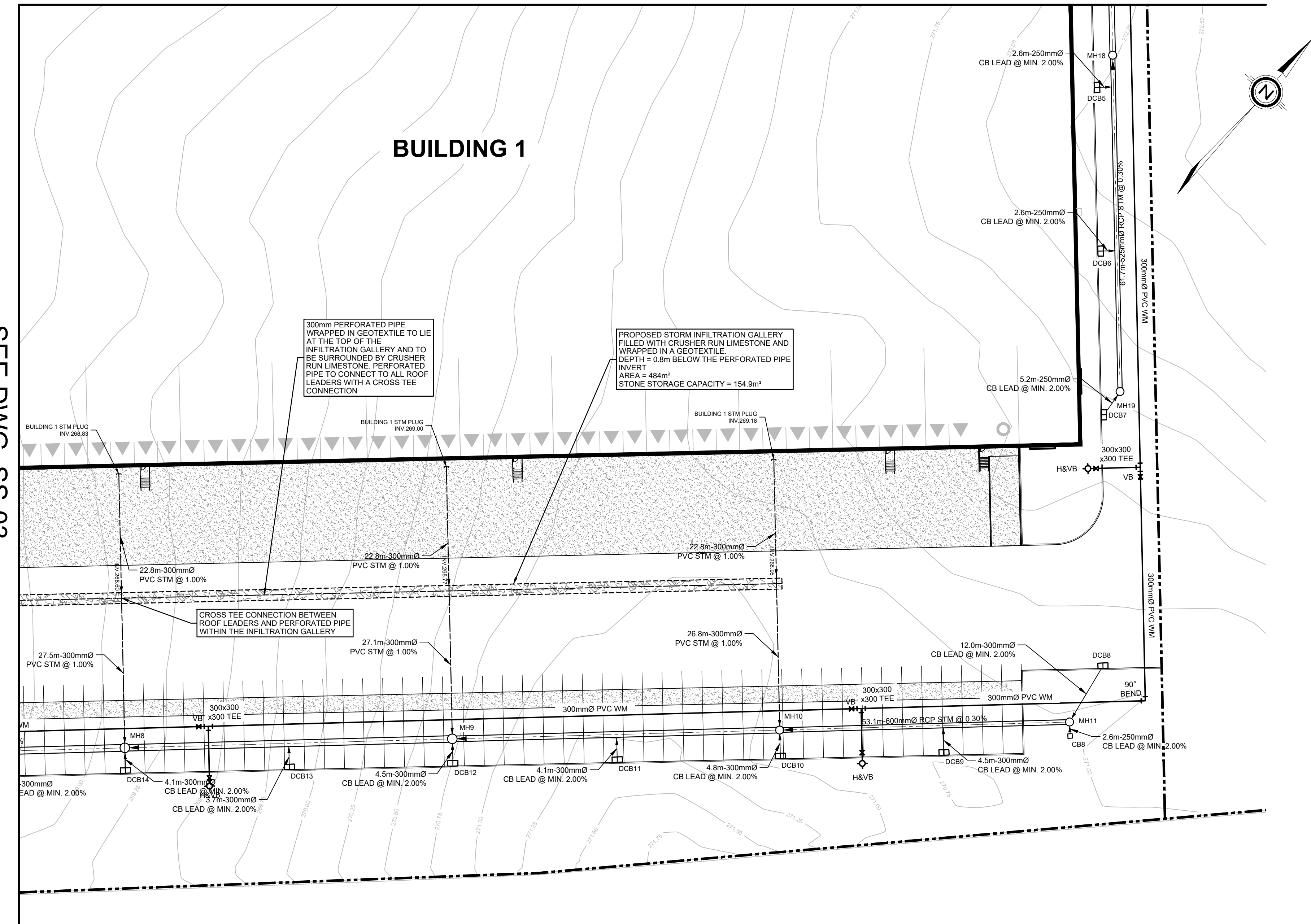
**CATCHBASIN STRUCTURE INVENTORY**

CB #	CB STD.	FRAME OPSD	TOP ELEV.
CB1	OPSD 705.010	400.020	270.26
CB2	OPSD 705.010	400.020	270.15
CB3	OPSD 705.010	400.020	270.15
CB4	OPSD 705.010	400.020	270.15
CB5	OPSD 705.010	400.020	270.15
CB6	OPSD 705.010	400.020	270.15
CB7	OPSD 705.010	400.020	270.20
CB8	OPSD 705.010	400.020	270.20
CB9	OPSD 705.010	400.020	270.10
CB10	OPSD 705.010	400.020	270.00
CB11	OPSD 705.010	400.020	270.00
CB12	OPSD 705.010	400.020	270.15
CB13	OPSD 705.010	400.020	270.15
CB15	OPSD 705.010	400.020	270.15
CB16	OPSD 705.010	400.020	270.05
DCB1	OPSD 705.020	400.020	270.00
DCB2	OPSD 705.020	400.020	270.20
DCB3	OPSD 705.020	400.020	270.50
DCB4	OPSD 705.020	400.020	270.50
DCB5	OPSD 705.020	400.020	270.50

**CATCHBASIN STRUCTURE INVENTORY**

CB #	CB STD.	FRAME OPSD	TOP ELEV.
DCB6	OPSD 705.020	400.020	270.50
DCB7	OPSD 705.020	400.020	270.50
DCB8	OPSD 705.020	400.020	270.20
DCB9	OPSD 705.020	400.020	270.05
DCB10	OPSD 705.020	400.020	270.05
DCB11	OPSD 705.020	400.020	270.05
DCB12	OPSD 705.020	400.020	270.05
DCB13	OPSD 705.020	400.020	270.05
DCB14	OPSD 705.020	400.020	270.05
DCB15	OPSD 705.020	400.020	270.05
DCB16	OPSD 705.020	400.020	270.05
DCB17	OPSD 705.020	400.020	270.05
DCB18	OPSD 705.020	400.020	270.05
DCB19	OPSD 705.020	400.020	268.88

SEE DWG. SS-03



**LIST OF DRAWINGS**

SG-01	SITE GRADING PLAN
SG-02	SITE GRADING PLAN
SG-03	SITE GRADING PLAN
SG-04	SITE GRADING PLAN
SS-01	SITE SERVICING PLAN
SS-02	SITE SERVICING PLAN
SS-03	SITE SERVICING PLAN
SS-04	SITE SERVICING PLAN
EC-01	EROSION AND SEDIMENT CONTROL PLAN
EC-02	EROSION AND SEDIMENT CONTROL PLAN
EC-03	EROSION AND SEDIMENT CONTROL PLAN
EC-04	EROSION AND SEDIMENT CONTROL PLAN
DD-01	DETAIL DRAWING
DD-02	DETAIL DRAWING
DD-03	DETAIL DRAWING
DD-04	DETAIL DRAWING

**SITE PLAN INFORMATION**

WARE MALCOMB  
290 UNIVERSITY AVE, SUITE 235  
TORONTO, ON, M9H 3E5  
PHONE: (416) 537-5700  
WEBSITE: www.waremalcomb.com

**SUBVEYOR INFORMATION**

R-PE SURVEYING LTD.  
ONTARIO LAND SURVEYORS  
640 CHRISLEA ROAD, SUITE 7  
WOODBRIDGE, ON, L4L 6A3  
PHONE: (416) 635-5000  
WEBSITE: www.rpe.ca

**BENCHMARK INFORMATION:**  
ELEVATIONS ARE GEODETIC AND ARE REFERRED TO MTD VERTICAL BENCHMARK NUMBER 08899991 HAVING AN ORTHOMETRIC ELEVATION OF 268.112 METRES. ELEVATIONS ARE REFERENCED TO THE CANADIAN GEODETIC VERTICAL DATUM OF 1984, 1978 ADJUSTMENT (CGVD-1984/1978).

SCALE: 1:500

**CLIENT**  
**BROCCOLINI**

2680 SKYMARK AVENUE, SUITE 800  
MISSISSAUGA, ON. L4W5L6

**COPYRIGHT**  
This drawing has been prepared solely for the intended use. Any reproduction or distribution for any purpose other than authorized by IBI Group is forbidden. Written dimensions shall have precedence over scaled dimensions. Contractors shall verify and be responsible for all dimensions and conditions on the job, and IBI Group shall be informed of any variations from the dimensions and conditions shown on the drawing. Shop drawings shall be submitted to IBI Group for general performance before proceeding with fabrication.

**IBI Group Professional Services (Canada) Inc.**  
is a member of the IBI Group of companies.

**ISSUES**

No.	DESCRIPTION	DATE
1	ISSUED FOR SPA SUBMISSION	NOV 15, 2021

**LEGEND**

PROPERTY LINE

PROPOSED STORM MANHOLE

PROPOSED SANITARY MANHOLE

PROPOSED SINGLE CATCH BASIN

PROPOSED DOUBLE CATCH BASIN

EXISTING STORM MANHOLE

EXISTING SANITARY MANHOLE

EXISTING CATCH BASIN

PROPOSED VALVE AND BOX

PROPOSED STORM

PROPOSED SANITARY

EXISTING STORM

EXISTING SANITARY

EXISTING WATER

EXISTING BELL

EXISTING GAS

PROPOSED AREA DRAIN

PROPOSED WATER SERVICE AND CURB STOP

PROPOSED SANITARY SERVICE

PROPOSED STORM SERVICE

**SEAL**

**TOWN OF CALEDON**

**IBI GROUP**  
Unit 300 - 8133 Warden Avenue  
Markham ON L6G 1B3 Canada  
Tel: 905.763.2322 Fax: 905.763.9883  
ibigroup.com

**PROJECT**  
12304 HEART LAKE ROAD

CALEDON, ON. L7C 2J2

**PROJECT NO:**  
135636

**DRAWN BY:** NDS  
**CHECKED BY:** JJ

**PROJECT MGR:** JJ  
**APPROVED BY:** JJ

**SHEET TITLE**  
SITE SERVICING PLAN

**SHEET NUMBER** **ISSUE**  
SS-04 01