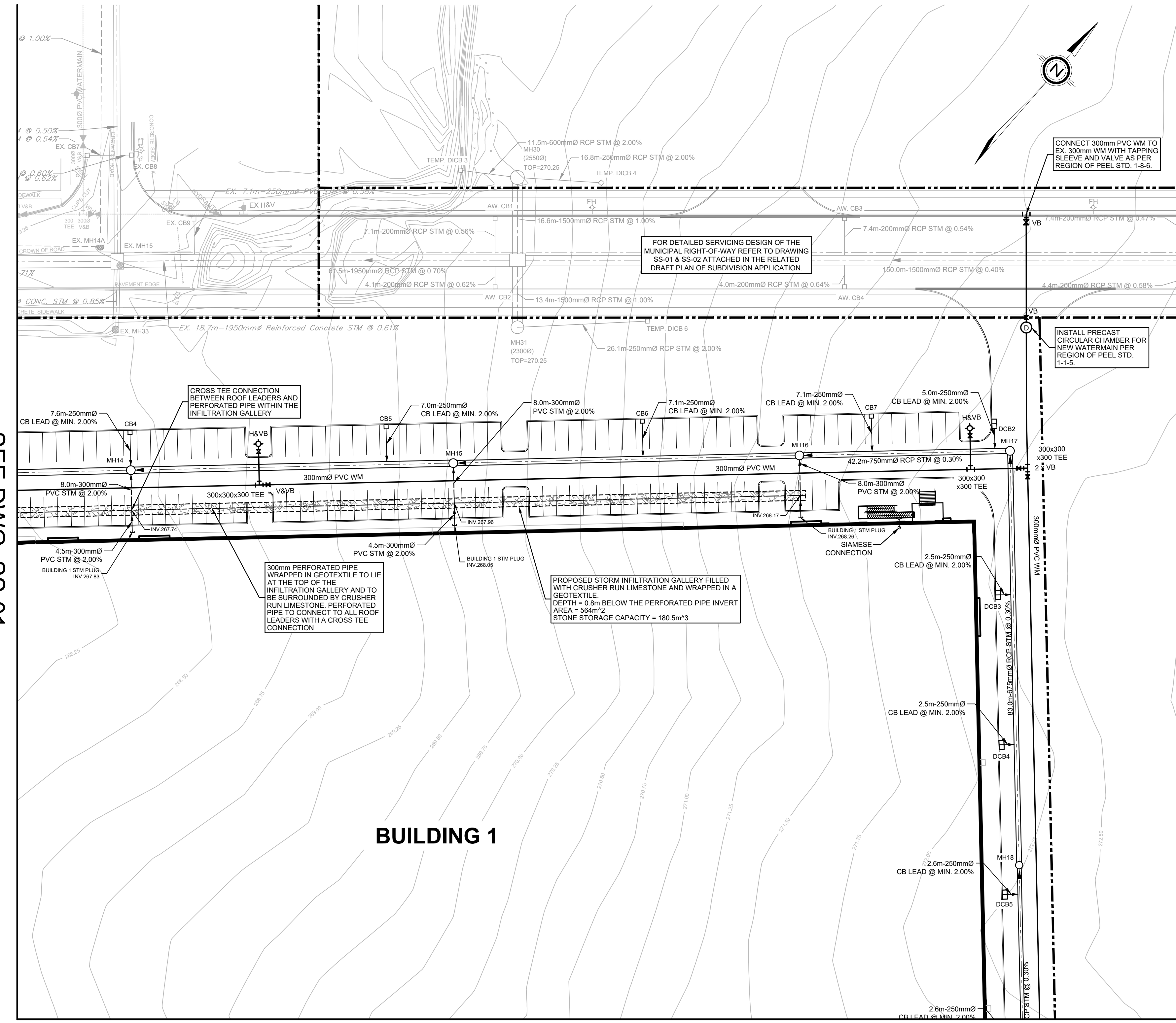


STORM SEWER STRUCTURE INVENTORY					
MH #	MH DIAMETER	MH OPSD	FRAME OPSD	TOP ELEV.	INVERTS
EX. MH12	1500mmØ	OPSD 701.011	OPSD 401.010	267.61	NE 264.00 (750mmØ) NE 265.50 (900mmØ) NW 263.85 (900mmØ)
MH1	2300mmØ	OPSD 701.013	OPSD 401.010	268.75	SE 265.05 (900mmØ) NE 266.05 (900mmØ) NW 265.97 (900mmØ)
MH2	2300mmØ	OPSD 701.013	OPSD 401.010	269.97	SE 265.99 (900mmØ) NE 266.05 (900mmØ) NW 265.97 (900mmØ)
MH3	1500mmØ	OPSD 701.011	OPSD 401.010	270.25	SE 266.27 (900mmØ) SW 266.90 (250mmØ) NW 266.25 (900mmØ)
MH4	1500mmØ	OPSD 701.011	OPSD 401.010	270.28	SE 266.63 (900mmØ) SW 267.23 (250mmØ) NW 266.58 (900mmØ)
MH5	1800mmØ	OPSD 701.012	OPSD 401.010	270.15	NE 266.85 (900mmØ) NW 266.80 (900mmØ)
MH6	1500mmØ	OPSD 701.011	OPSD 401.010	270.11	NE 267.01 (900mmØ) NW 267.89 (300mmØ) SE 267.59 (300mmØ) SW 266.99 (900mmØ)
MH7	1500mmØ	OPSD 701.011	OPSD 401.010	270.11	NE 267.24 (900mmØ) NW 268.12 (300mmØ) SE 267.82 (300mmØ) SW 267.22 (900mmØ)
MH8	1500mmØ	OPSD 701.011	OPSD 401.010	270.12	NE 267.50 (825mmØ) NW 268.32 (300mmØ) SE 268.02 (300mmØ) SW 267.42 (900mmØ)
MH9	1500mmØ	OPSD 701.011	OPSD 401.010	270.13	NE 267.75 (750mmØ) SE 268.20 (300mmØ) NW 268.50 (300mmØ) SW 267.88 (825mmØ)
MH10	1200mmØ	OPSD 701.010	OPSD 401.010	270.13	NE 268.08 (600mmØ) SE 268.38 (300mmØ) NW 268.68 (300mmØ) SW 267.93 (750mmØ)
MH11	1200mmØ	OPSD 701.010	OPSD 401.010	270.26	NE 268.54 (300mmØ) SE 268.59 (250mmØ) SW 268.24 (600mmØ)
MH12	1500mmØ	OPSD 701.011	OPSD 401.010	270.42	NE 266.22 (900mmØ) NW 266.86 (250mmØ) SE 267.10 (250mmØ) SW 266.21 (900mmØ)
MH13	1500mmØ	OPSD 701.011	OPSD 401.010	270.41	NE 266.46 (900mmØ) SE 267.34 (300mmØ) SW 266.44 (900mmØ)
MH14	1500mmØ	OPSD 701.011	OPSD 401.010	270.35	NE 266.70 (900mmØ) NW 267.33 (250mmØ) SE 267.58 (300mmØ) SW 266.68 (900mmØ)
MH17	1500mmØ	OPSD 701.011	OPSD 401.010	270.52	SE 267.48 (875mmØ) NW 267.40 (750mmØ)
MH18	1200mmØ	OPSD 701.010	OPSD 401.010	270.64	SE 267.88 (525mmØ) NW 267.73 (675mmØ)
MH19	1200mmØ	OPSD 701.010	OPSD 401.010	270.84	S 268.29 (250mmØ) NW 268.07 (525mmØ)

SANITARY SEWER STRUCTURE INVENTORY					
MH #	MH DIAMETER	MH OPSD	FRAME OPSD	TOP ELEV.	INVERTS
EX. MH12A	1200mmØ	OPSD 701.010	OPSD 401.010	268.41	NW 265.57 (250mmØ) E 265.62 (250mmØ)
MH1A	1200mmØ	OPSD 701.010	OPSD 401.010	269.20	SE 265.84 (250mmØ) W 265.79 (250mmØ)
MH2A	1200mmØ	OPSD 701.010	OPSD 401.010	270.27	NE 267.73 (250mmØ) NE 268.28 (250mmØ) NW 266.20 (250mmØ)

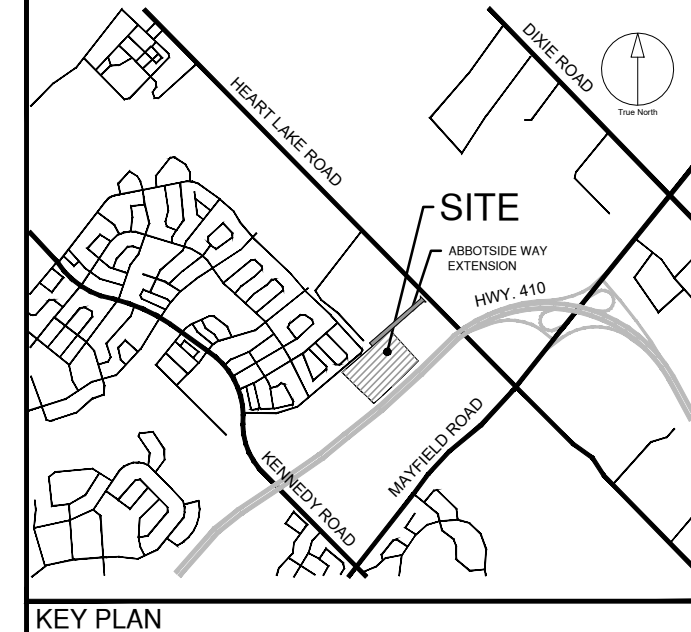
CATCHBASIN STRUCTURE INVENTORY			
CB #	CB STD.	FRAME OPSD	TOP ELEV.
CB1	OPSD 705.010	400.020	270.26
CB2	OPSD 705.010	400.020	270.15
CB3	OPSD 705.010	400.020	270.15
CB4	OPSD 705.010	400.020	270.15
CB5	OPSD 705.010	400.020	270.15
CB6	OPSD 705.010	400.020	270.15
CB7	OPSD 705.010	400.020	270.20
CB8	OPSD 705.010	400.020	270.20
CB9	OPSD 705.010	400.020	270.10
CB10	OPSD 705.010	400.020	270.00
CB11	OPSD 705.010	400.020	270.00
CB12	OPSD 705.010	400.020	270.15
CB13	OPSD 705.010	400.020	270.15
CB15	OPSD 705.010	400.020	270.15
CB16	OPSD 705.010	400.020	270.05
DCB1	OPSD 705.020	400.020	270.00
DCB2	OPSD 705.020	400.020	270.20
DCB3	OPSD 705.020	400.020	270.50
DCB4	OPSD 705.020	400.020	270.50
DCB5	OPSD 705.020	400.020	270.50

CATCHBASIN STRUCTURE INVENTORY			
CB #	CB STD.	FRAME OPSD	TOP ELEV.
DCB6	OPSD 705.020	400.020	270.50
DCB7	OPSD 705.020	400.020	270.50
DCB8	OPSD 705.020	400.020	270.20
DCB9	OPSD 705.020	400.020	270.05
DCB10	OPSD 705.020	400.020	270.05
DCB11	OPSD 705.020	400.020	270.05
DCB12	OPSD 705.020	400.020	270.05
DCB13	OPSD 705.020	400.020	270.05
DCB14	OPSD 705.020	400.020	270.05
DCB15	OPSD 705.020	400.020	270.05
DCB16	OPSD 705.020	400.020	270.05
DCB17	OPSD 705.020	400.020	270.05
DCB18	OPSD 705.020	400.020	270.05
DCB19	OPSD 705.020	400.020	268.88



SEE DWG. SS-01

SEE DWG. SS-04

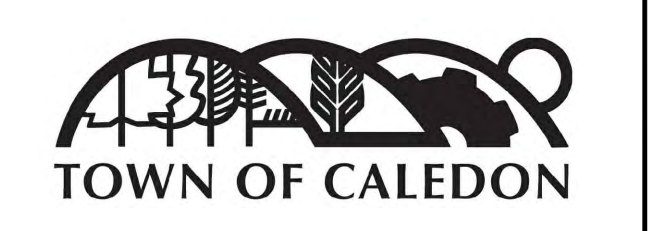


CLIENT
BROCCOLINI
2680 SKYMARK AVENUE, SUITE 800
MISSISSAUGA, ON. L4W5L6

COPYRIGHT
This drawing has been prepared solely for the intended use. Any reproduction or distribution for any purpose other than authorized by IBI Group is forbidden. Written dimensions shall have precedence over scaled dimensions. Contractors shall verify and be responsible for all dimensions and conditions on the job, and IBI Group shall be informed of any variations from the dimensions and conditions shown on the drawing. Shop drawings shall be submitted to IBI Group for general performance before proceeding with fabrication.
IBI Group Professional Services (Canada) Inc.
is a member of the IBI Group of companies.

ISSUES		
No.	DESCRIPTION	DATE
1	ISSUED FOR SPA SUBMISSION	NOV 15, 2021

LEGEND	
PROPERTY LINE	---
PROPOSED STORM MANHOLE	○
PROPOSED SANITARY MANHOLE	⊗
PROPOSED SINGLE CATCH BASIN	□
PROPOSED DOUBLE CATCH BASIN	⊠
EXISTING STORM MANHOLE	○
EXISTING SANITARY MANHOLE	⊗
EXISTING CATCH BASIN	□
PROPOSED VALVE AND BOX	V & B
PROPOSED STORM	---
PROPOSED SANITARY	---
PROPOSED WATER	---
EXISTING STORM	---
EXISTING SANITARY	---
EXISTING WATER	---
EXISTING BELL	○
EXISTING GAS	---
PROPOSED AREA DRAIN	⊗
PROPOSED WATER SERVICE AND CURB STOP	●
PROPOSED SANITARY SERVICE	---
PROPOSED STORM SERVICE	---



IBI GROUP
Unit 300 - 8133 Warden Avenue
Markham ON L6G 1B3 Canada
Tel: 905.763.2322 Fax: 905.763.9883
ibigroup.com

PROJECT
12304 HEART LAKE ROAD
CALEDON, ON. L7C 2J2

PROJECT NO:
135636

DRAWN BY: **NDS** CHECKED BY: **JJ**

PROJECT MGR: **JJ** APPROVED BY: **JJ**

SHEET TITLE
SITE SERVICING PLAN

SHEET NUMBER **SS-02** ISSUE **01**

LIST OF DRAWINGS	
SG-01 - SITE GRADING PLAN	
SG-02 - SITE GRADING PLAN	
SG-03 - SITE GRADING PLAN	
SG-04 - SITE GRADING PLAN	
SS-01 - SITE SERVICING PLAN	
SS-02 - SITE SERVICING PLAN	
SS-03 - SITE SERVICING PLAN	
SS-04 - SITE SERVICING PLAN	
EC-01 - EROSION AND SEDIMENT CONTROL PLAN	
EC-02 - EROSION AND SEDIMENT CONTROL PLAN	
EC-03 - EROSION AND SEDIMENT CONTROL PLAN	
EC-04 - EROSION AND SEDIMENT CONTROL PLAN	
DD-01 - DETAIL DRAWING	
DD-02 - DETAIL DRAWING	
DD-03 - DETAIL DRAWING	
DD-04 - DETAIL DRAWING	

SITE PLAN INFORMATION	
WARE MALCOMB 290 UNIVERSITY AVE, SUITE 235 TORONTO, ON. M5H 3E5 PHONE: (416) 537-5700 WEBSITE: www.waremalcomb.com	R-PE SURVEYING LTD. ONTARIO LAND SURVEYORS 640 CHRISLEA ROAD, SUITE 7 WOODBRIDGE, ON. L4L 6A3 PHONE: (416) 635-5000 WEBSITE: www.rpe.ca

BENCHMARK INFORMATION:	
ELEVATIONS ARE GEODETIC AND ARE REFERRED TO MTO VERTICAL BENCHMARK NUMBER 05899991 HAVING AN ORTHOMETRIC ELEVATION OF 268.112 METRES. ELEVATIONS ARE REFERENCED TO THE CANADIAN GEODETIC VERTICAL DATUM OF 1984. 1978 ADJUSTMENT (CGVD-1984/1978).	

SCALE: 1:500