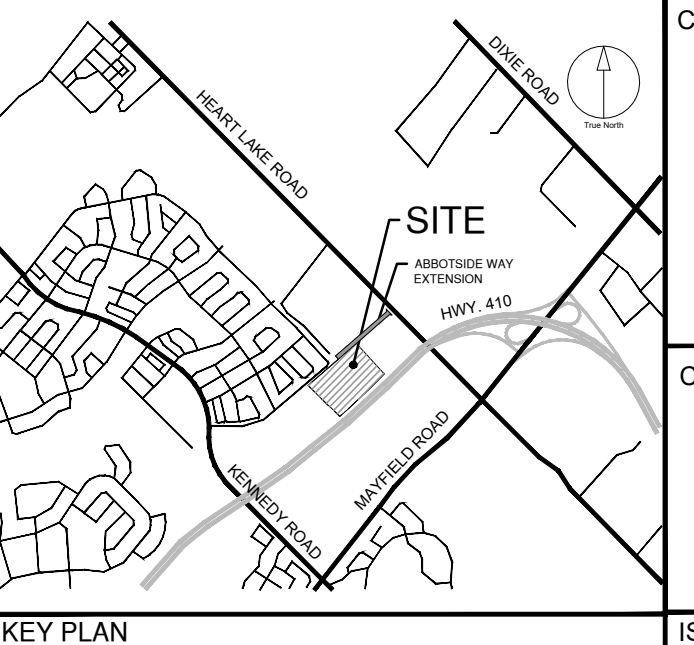


- ### EROSION CONTROL MEASURES
- ALL EROSION AND SEDIMENT CONTROL FACILITIES ARE TO BE INSPECTED BY THE CONSULTING ENGINEER ONCE A WEEK AND AFTER EACH RAINFALL OF 10mm OR GREATER OR A SIGNIFICANT SNOW MELT. DAILY INSPECTIONS ARE REQUIRED DURING EXTENDED RAINFALL OR SNOW MELT PERIODS.
  - ALL DAMAGED ESC FACILITIES ARE TO BE REPAIRED AND/OR REPLACED WITHIN 48 HOURS OF INCIDENT.
  - SILTATION CONTROL DEVICES SHALL BE INSTALLED PRIOR TO WORKERS COMMENCING ON THE SITE AND SHALL BE MAINTAINED FOR THE DURATION OF CONSTRUCTION, TO THE SATISFACTION OF THE CITY.
  - ALTERNATIVE METHODS OF EROSION CONTROL MUST BE REVIEWED AND APPROVED BY IBI GROUP PRIOR TO IMPLEMENTATION.
  - SILT FENCING SHALL BE AS PER TOWN OF CALEDON STD NO.304 PER DETAIL AND INSTALLED PRIOR TO COMMENCEMENT OF ANY AREA GRADING, EXCAVATION OR DEMOLITION AND LOCATED WHERE OFF-SITE FLOWS OCCUR.
  - ALL CATCHBASINS TO HAVE SEDIMENT TRAP OR SEDIMENT BARRIER INSTALLED AS PER TOWN OF CALEDON STD NO.302 AND 303.
  - ALL STOCKPILE LOCATIONS TO BE MINIMUM 2.50m FROM PROPERTY LINE AND SURROUNDED BY SILT FENCING TO AVOID OFF-SITE MIGRATION OF SEDIMENT.
  - ADDITIONAL EROSION CONTROL MEASURES MAY BE REQUIRED AS SITE DEVELOPMENT PROGRESSES.
  - CONTRACTOR TO PROVIDE ALL ADDITIONAL EROSION CONTROL FEATURES TO PREVENT SEDIMENT FROM LEAVING THE SITE.
  - CONTRACTOR IS RESPONSIBLE FOR REMOVING SEDIMENTS FROM THE MUNICIPAL ROADWAY AND SIDEWALKS AT THE END OF EACH WORK DAY.
  - ALL EROSION CONTROL STRUCTURES TO REMAIN IN PLACE UNTIL ALL DISTURBED GROUND SURFACES HAVE BEEN RE-STABILIZED EITHER BY PAVING OR RESTORATION OF VEGETATIVE GROUND COVER.
  - CONTRACTOR TO MINIMIZE EXTENT OF DISTURBED AREA AND DURATION OF EXPOSURE. STABILIZE/PROTECT DISTURBED AREA AS SOON AS POSSIBLE.
  - CONTRACTOR TO MONITOR THE SITE DEVELOPMENT TO ENSURE ALL EROSION CONTROLS ARE INSTALLED AND MAINTAINED TO MUNICIPAL REQUIREMENTS.
  - CONTRACTOR TO COMPLY WITH THE ENGINEER'S INSTRUCTIONS TO INSTALL, MODIFY OR MAINTAIN EROSION CONTROL WORKS.
  - EROSION CONTROL STRUCTURES TO BE MONITORED REGULARLY BY IBI GROUP AND ANY DAMAGE REPAIRED IMMEDIATELY. CONTRACTOR WILL REMOVE SEDIMENTS WHEN ACCUMULATIONS REACH A MAXIMUM OF 1/3 THE HEIGHT OF THE STRUCTURE. (I.E. FENCE)
  - SEE DWG. EC-05 FOR FURTHER INFO FOR SEDIMENT CONTROL MEASURES.
  - SEE STORMWATER MANAGEMENT REPORT PREPARED BY IBI GROUP (IBI PROJECT NO. 32529) FOR FURTHER INFO ON EROSION AND SEDIMENT CONTROL.
  - ALL DISTURBED GROUND LEFT INACTIVE SHALL BE STABILIZED BY SEEDING, SODDING, MULCHING OR COVERING, OR OTHER EQUIVALENT CONTROL MEASURE. THE PERIOD OF TIME OF INACTIVITY SHALL NOT EXCEED 30 DAYS, UNLESS OTHERWISE AUTHORIZED BY THE DIRECTOR OF PUBLIC WORKS AND ENGINEERING.
  - CONSTRUCTION ACCESS ROUTES SHALL BE CLEARED OF MUD AND DUST DAILY.
  - INTERNAL AND EXTERNAL ROADS TO BE SCRAPPED, FLUSHED AND SWEEPED TWICE WEEKLY. THIS WORK SHALL BE COMPLETED EVERY TUESDAY AND FRIDAY OF EACH WEEK AND CONTINUE UNTIL ALL LOTS ARE SODDED.



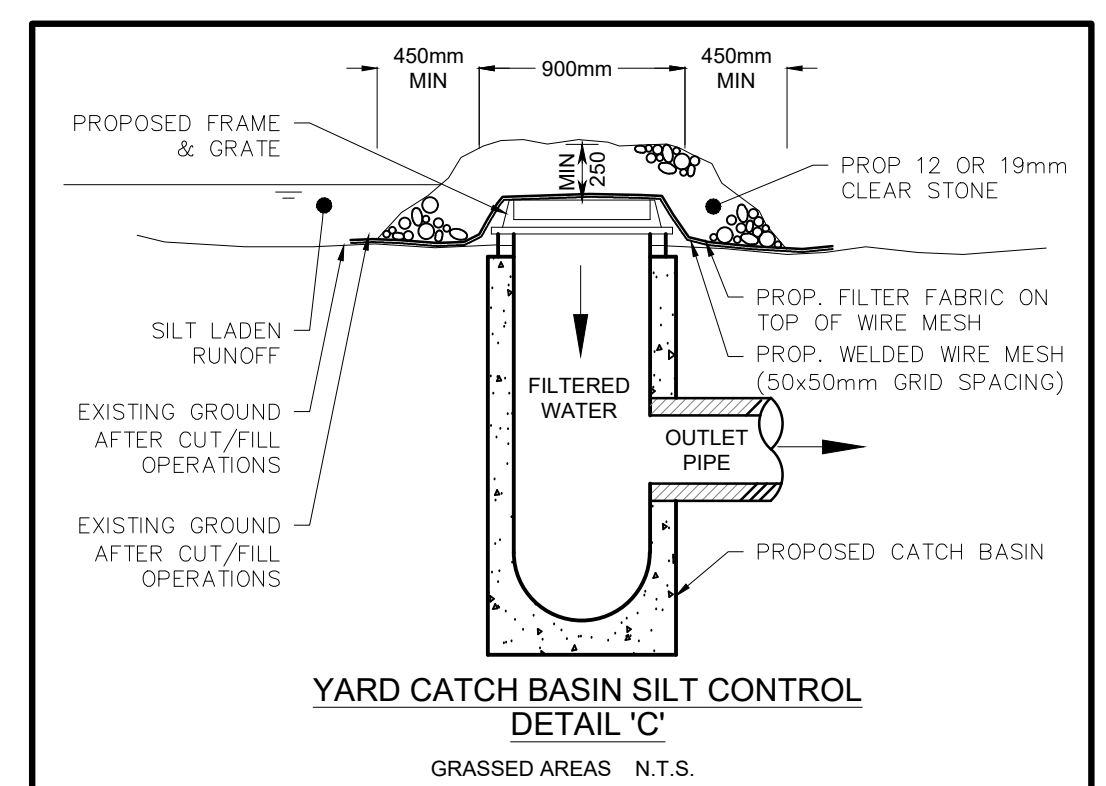
CLIENT  
**BROCCOLINI**

2680 SKYMARK AVENUE, SUITE 800  
MISSISSAUGA, ON. L4W5L6

COPYRIGHT  
This drawing has been prepared solely for the intended use. Any reproduction or distribution for any purpose other than authorized by IBI Group is forbidden. Written dimensions shall have precedence over scaled dimensions. Contractors shall verify and be responsible for all dimensions and conditions on the job, and IBI Group shall be informed of any variations from the dimensions and conditions shown on the drawing. Shop drawings shall be submitted to IBI Group for general conformance before proceeding with fabrication.

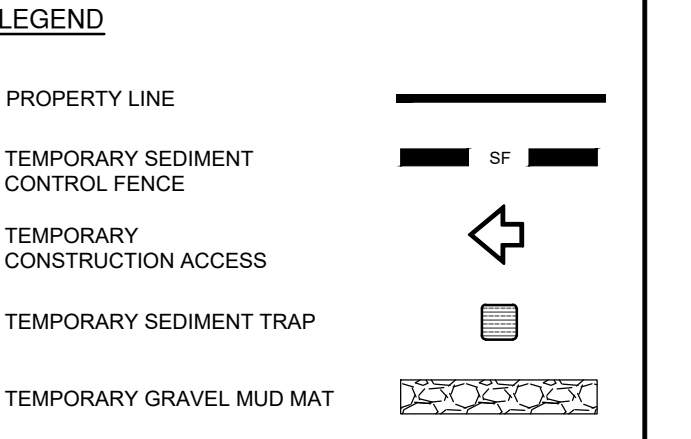
IBI Group Professional Services (Canada) Inc.  
is a member of the IBI Group of companies.

SEE DWG. EC-02

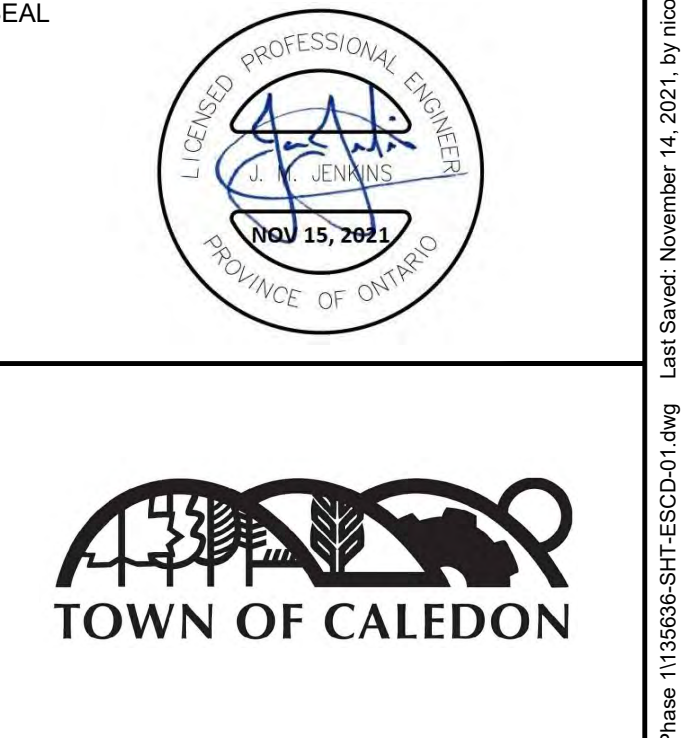


ISSUES

No.	DESCRIPTION	DATE
1	ISSUED FOR SPA SUBMISSION	NOV 15, 2021



SEAL



IBI GROUP  
Unit 300 - 8133 Warden Avenue  
Markham ON L6G 1B3 Canada  
Tel: 905.763.2322 Fax: 905.763.9883  
ibigroup.com

PROJECT  
**12304 HEART LAKE ROAD**

CALEDON, ON. L7C 2J2

PROJECT NO:  
**135636**

DRAWN BY:  
**NDS**

PROJECT MGR:  
**JJ**

CHECKED BY:  
**JJ**

APPROVED BY:  
**JJ**

SHEET TITLE  
**EROSION CONTROL PLAN**

SHEET NUMBER  
**EC-01**

ISSUE  
**01**

### SILTATION AND EROSION CONTROL

A. SILTATION CONTROL BARRIERS SHALL BE AS DETAILED.  
B. ALL SILTATION CONTROL MEASURES SHALL BE CLEANED AND MAINTAINED AFTER EACH RAINFALL AS DIRECTED AND TO THE SATISFACTION OF THE TOWN OF CALEDON.  
C. ADDITIONAL SILT CONTROL LOCATIONS MAY BE REQUIRED AS DETERMINED BY THE TOWN OF CALEDON.

**IMPORTANT NOTE:**  
IN THE EVENT THAT THE APPROVED EROSION AND SEDIMENT CONTROLS AND STORMWATER MANAGEMENT FACILITIES ARE NOT EFFECTIVELY CONTROLLING SEDIMENT RELEASE INTO THE NATURAL ENVIRONMENT, THE PROJECT MANAGER OR SITE SUPERVISOR WILL IMMEDIATELY UPGRADE CONTROLS TO RECTIFY THE SITUATION.

### EROSION AND SEDIMENT CONTROL NOTES:

FOLLOWING ARE THE MINIMUM OR "GOOD HOUSEKEEPING" REQUIREMENTS, TO ACHIEVE EROSION CONTROL DURING THE CONSTRUCTION PERIOD. THE MEASURES WILL BE INSPECTED PERIODICALLY BY MUNICIPAL STAFF. IT IS THE RESPONSIBILITY OF THE DEVELOPER/GENERAL CONTRACTOR TO ASSURE THEIR CONTINUED EFFECTIVENESS THROUGHOUT CONSTRUCTION.

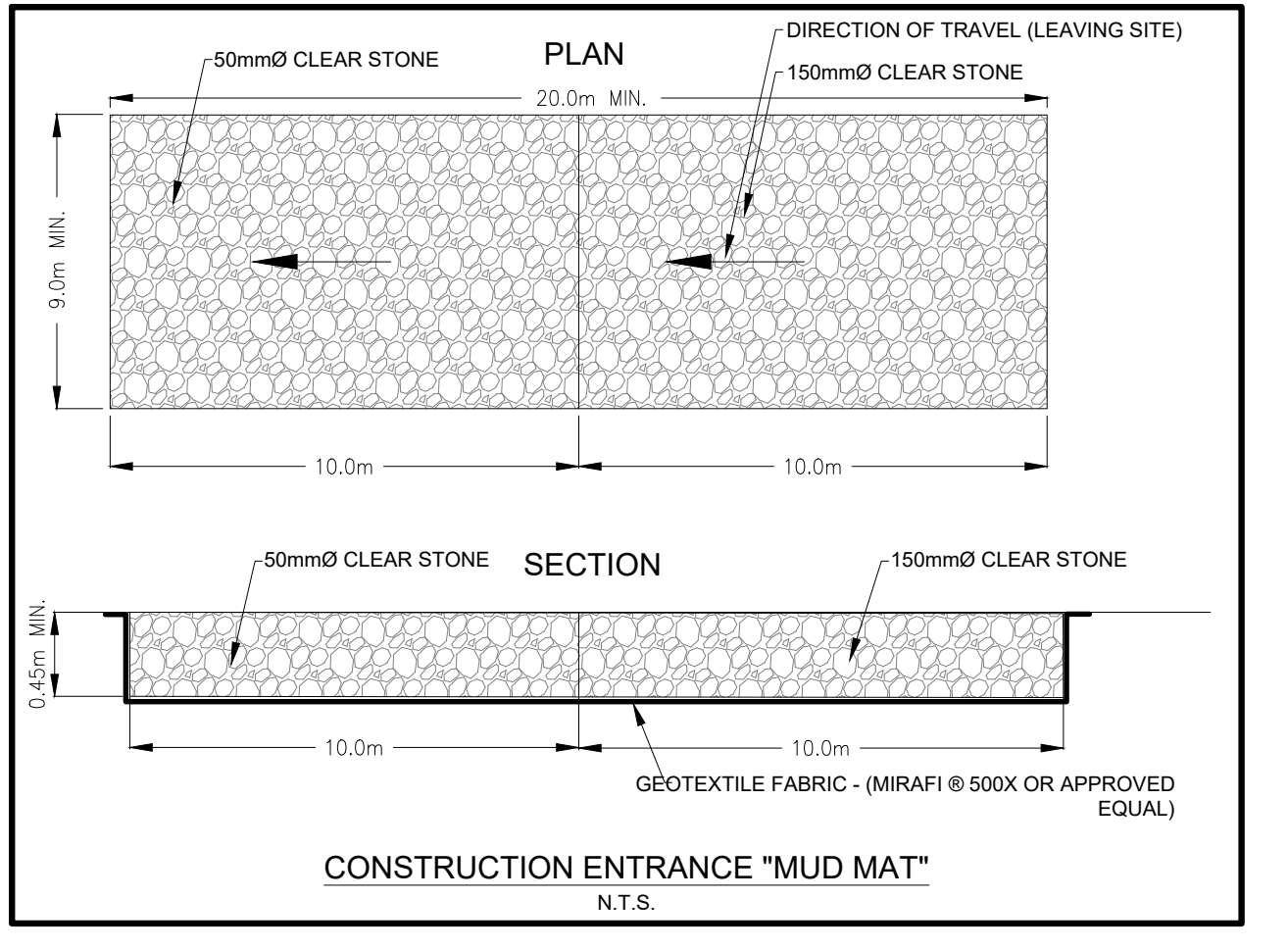
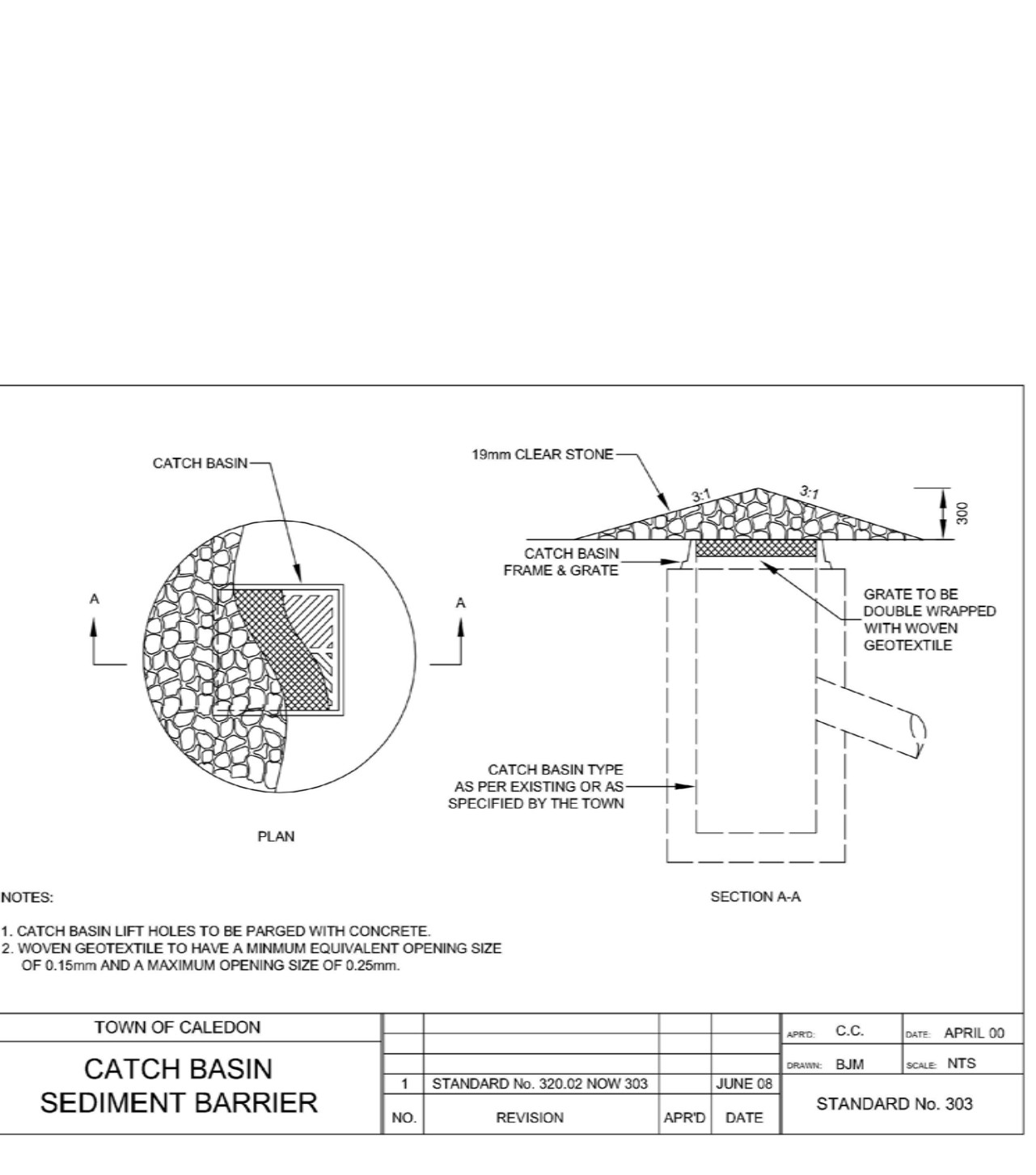
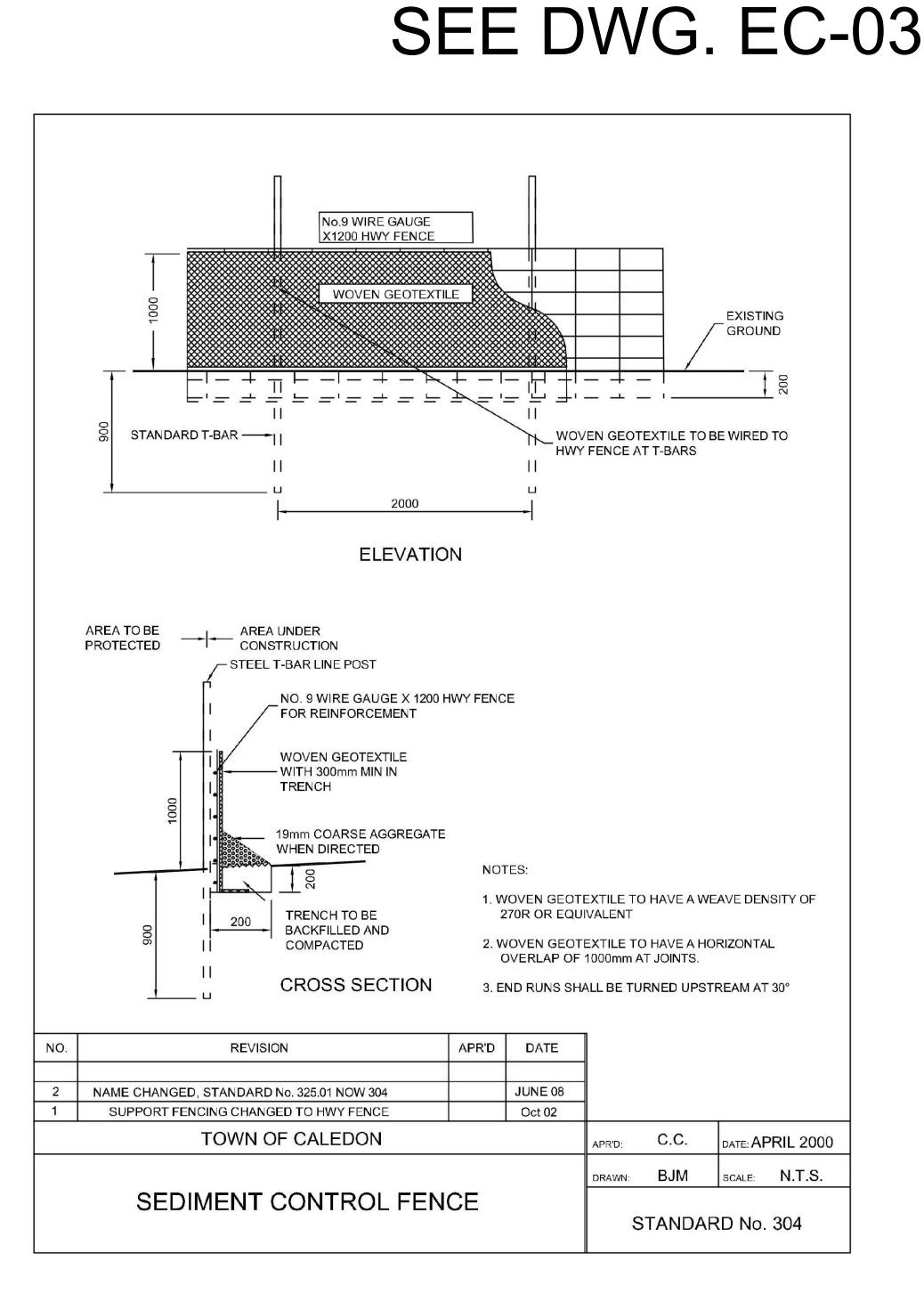
- PROVIDE GRAVEL ENTRANCE WHEREVER EQUIPMENT LEAVES THE SITE TO PREVENT MUD TRACKING ONTO PAVED SURFACES. GRAVEL BED SHALL BE A MINIMUM OF 30m LONG, 6m WIDE AND 0.45m DEEP AND SHALL CONSIST OF COARSE (2" CRUSHER-RUN LIMESTONE) MATERIAL. MAINTAIN GRAVEL ENTRANCE IN CLEAN CONDITION.
- COVER ALL CATCHBASINS WITH 6mm STEEL PLATE THAT IS FIRMLY SECURED TO THE CB GRATING WITH CLAMPS, SCREWS OR WIRES. COVER TO REMAIN IN PLACE UNTIL ROUGH PAVING IS COMPLETED. MAINTAIN GOOD HOUSEKEEPING TO PREVENT WATERBORNE SEDIMENT FROM ENTERING THE STORM SEWER SYSTEM. IF THE CBS MUST BE USED FOR SITE DRAINAGE DURING CONSTRUCTION, THEY ARE EACH TO BE SURROUNDED BY A STRAW BALE SILT-TRAP.
- DO NOT LOCATE TOPSOIL PILES AND EXCAVATION MATERIAL CLOSER THAN 2.5m FROM ANY PAVED SURFACE, OR ONE WHICH IS TO BE PAVED BEFORE THE PILE IS REMOVED. ALL TOPSOIL PILES TO BE SEEDDED IF THEY ARE TO REMAIN ON-SITE LONG ENOUGH FOR SEEDS TO GROW (LONGER THAN ONE MONTH).
- CONTROL WIND-BLOWN DUST OFF-SITE TO ACCEPTABLE LEVELS, BY SEEDING TOPSOIL PILES AND OTHER AREAS TEMPORARILY, AND/OR WATERING, AS REQUIRED.
- TEMPORARY SOIL STOCKPILES SHOULD BE PLACED AWAY FROM ALL WATERCOURSES.
- SILT FENCE & SEDIMENT TRAP TO BE CLEANED PERIODICALLY AS REQUIRED.

### DURING CONSTRUCTION:

- STONE JACKET TO BE WRAPPED IN FILTER CLOTH.
- FILTER CLOTH WRAPPING ON STONE JACKET TO BE INSPECTED AFTER EACH RAINFALL EVENT AND REPLACED IF CLOGGED.
- ACCUMULATED SEDIMENT TO BE REMOVED AS REQUIRED.
- AT COMPLETION OF CONSTRUCTION:
  - ACCUMULATED SEDIMENT TO BE REMOVED AND DISPOSED OFFSITE.
  - FILTER CLOTH TO BE REMOVED FROM STONE JACKET.
  - TOPSOIL, SEED AND PLANT AS PER SPECIFICATIONS.

### SOIL STABILIZATION:

- STABILIZE DISTURBED GROUND AND STOCKPILES BY SEEDING, SODDING, MULCHING, COVERING, OR OTHER ACCEPTABLE CONTROL MEASURES. IF GROUND IS INACTIVE FOR THIRTY (30) DAYS, (SEE TRCA ESC GUIDELINES FOR DETAILS)



THE EROSION AND SEDIMENT CONTROL (ESC) STRATEGIES OUTLINED ON THE PLANS ARE NOT STATIC AND MAY NEED TO BE UPGRADED/AMENDED AS SITE CONDITIONS CHANGE TO PREVENT SEDIMENT RELEASES TO THE NATURAL ENVIRONMENT. FAILED ESC MEASURES SHOULD BE REPAIRED WITHIN 48 HOURS.

### LIST OF DRAWINGS

SG-01	SITE GRADING PLAN
SG-02	SITE GRADING PLAN
SG-03	SITE GRADING PLAN
SG-04	SITE GRADING PLAN
SS-01	SITE SERVICING PLAN
SS-02	SITE SERVICING PLAN
SS-03	SITE SERVICING PLAN
SS-04	SITE SERVICING PLAN
EC-01	EROSION AND SEDIMENT CONTROL PLAN
EC-02	EROSION AND SEDIMENT CONTROL PLAN
EC-03	EROSION AND SEDIMENT CONTROL PLAN
EC-04	EROSION AND SEDIMENT CONTROL PLAN
DD-01	DETAIL DRAWING
DD-02	DETAIL DRAWING
DD-03	DETAIL DRAWING
DD-04	DETAIL DRAWING

### SITE PLAN INFORMATION

WAHE MALCOMB  
250 UNIVERSITY AVE, SUITE 235  
TORONTO, ON, M9H 3E5  
PHONE: (416) 537-5700  
WEBSITE: www.warerialmalcomb.com

### SUBVEYOR INFORMATION

RPE SURVEYING LTD.  
ONTARIO LAND SURVEYORS  
640 CHURCHILL ROAD, SUITE 7  
WOODBRIDGE, ON, L4L 6A3  
PHONE: (416) 835-5000  
WEBSITE: www.rpe.ca

### BENCHMARK INFORMATION:

ELEVATIONS ARE GEODETIC AND ARE REFERRED TO MTO VERTICAL BENCHMARK NUMBER 09899991 HAVING AN ORTHOMETRIC ELEVATION OF 268.112 METRES. ELEVATIONS ARE REFERENCED TO THE CANADIAN GEODETIC VERTICAL DATUM OF 1988. 1978 ADJUSTMENT (CGVD-1988/1978).

SCALE: