

**Town of Caledon  
APPROVED  
AS NOTED**

This approval constitutes a general review and does not certify dimensional accuracy.  
This approval is subject to further certification of the "as recorded" works by a Professional Engineer of the Province of Ontario.

Date: \_\_\_\_\_  
Approved By: \_\_\_\_\_  
Print Name: \_\_\_\_\_

**PROPOSED STREET PLANT LIST**

KEY	BOTANICAL NAME	COMMON NAME	QNTY.
<b>DECIDUOUS TREES</b>			
A	Acer rubrum	Red Maple	5
B	Celtis occidentalis	Hackberry	4
C	Gleditsia triacanthos var. inermis	Halka Honeylocust	4
D	Quercus macrocarpa	Bur Oak	3
E	Tilia x euchlora	Crimean Linden	5
F	Quercus rubra	Red Oak	5
G	Ulmus x homestead	Homestead Elm	3
			<b>TOTAL</b> 29

**L1 SITE PLANT LIST - MASTER ON L-2**

KEY	BOTANICAL NAME	COMMON NAME	QNTY.
<b>DECIDUOUS TREES</b>			
AR	Acer rubrum 'Brandywine'	Brandywine Maple	13
CC	Carpinus caroliniana	Blue Beech	5
GT	Gleditsia triacanthos var. inermis	Thornless Honeylocust	10
PSK	Prunus serotina 'Kwanzan'	Kwanzan Flowering Cherry	15
QR	Quercus rubra	Red Oak	5
TA	Tilia americana 'Redmond'	Redmond Basswood	2
UH	Ulmus x homestead	Homestead Elm	13
			<b>TOTAL</b> 63
<b>CONIFEROUS TREES</b>			
PG	Picea glauca	White Spruce	11
PP	Picea pungens	Colorado Spruce	9
PS	Pinus strobus	Eastern White Pine	10
			<b>TOTAL</b> 30
<b>PERENNIALS / GRASSES</b>			
ag	Andropogon gerardii	Big Blue Stem	273
pv	Panicum virgatum	Switch Grass	305
			<b>TOTAL</b> 578

**SEED MIX:**  
CONTRACTOR TO SOW NURSE CROP AVENA SATIVA OVER ENTIRE AREA TO BE SEEDDED AT A RATE OF 25KG / HECTARE.  
8145 - RURAL ONTARIO ROADSIDE MIXTURE BY OSC SEEDS (519 886 0557). TO BE SEEDDED AT A RATE OF 25KG PER HA. SEED MIX TO INCLUDE:

- Black Eyed Susan (Rudbeckia hirta)
- Blue Vervain (Verbena hastata)
- Bonset (Eupatorium perfoliatum)
- Canada Wild Rye (Elymus canadensis)
- Dense Blazing Star (Liatris spicata)
- Foxglove/Beard Tongue (Penstemon digitalis)
- Indian grass (Sorghastrum nutans)
- Little Blue Stem (Schizachyrium scoparium)
- New England Aster (Aster novae-angliae)
- Showy Tick Traft (Desmodium canadense)
- Virginia Wild Rye (Elymus virgatum)
- Wild Bergamot (Monarda fistulosa)

**CLIENT**  
**BROCCOLINI**  
2680 SKYMARK AVENUE, SUITE 800  
MISSISSAUGA, ON. L4W5L6

**COPYRIGHT**  
This drawing has been prepared solely for the intended use. This reproduction or distribution for any purpose other than that authorized by IBI Group is forbidden. Written dimensions shall have precedence over scaled dimensions. Contractors shall verify and be responsible for all dimensions and conditions on the job, and IBI Group shall be informed of any variations from the dimensions and conditions shown on the drawing. Shop drawings shall be submitted to IBI Group for general conference before proceeding with fabrication.  
IBI Group Professional Services (Canada) Inc.  
is a member of the IBI Group of companies.

**ISSUES**

No.	DESCRIPTION	DATE
1	ISSUED FOR ZBA AND SPA	APR 6, 2022

**LEGEND**

- TOPSOIL AND SOD AS SPECIFIED  
MINIMUM 300mm TOPSOIL DEPTH
- TOPSOIL AND SEED AS SPECIFIED  
MINIMUM 300mm TOPSOIL DEPTH
- CONCRETE PAVING
- PROPOSED DECIDUOUS STREET TREE
- PROPOSED DECIDUOUS SHADE TREE
- PROPOSED DECIDUOUS MULTISTEM TREE
- PROPOSED DECIDUOUS ORNAMENTAL TREE
- PROPOSED CONIFEROUS TREE
- PROPOSED DECIDUOUS SHRUBS
- PROPOSED BROAD-LEAF EVERGREEN SHRUBS
- PROPOSED PERENNIALS
- PROPOSED ORNAMENTAL GRASSES
- PLANT SPECIES QUANTITY
- PROPERTY LINE
- CHAIN LINK FENCE
- LIMIT OF WORK

**NOT FOR CONSTRUCTION**



**PROJECT**  
12304 HEART LAKE ROAD  
CALEDON, ON. L7C 2J2

**PROJECT NO:**  
135636

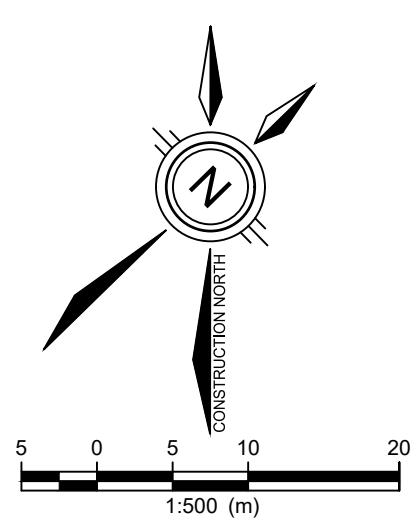
**DRAWN BY:** SW  
**PROJECT MGR:** SA

**CHECKED BY:** TO  
**APPROVED BY:** TO

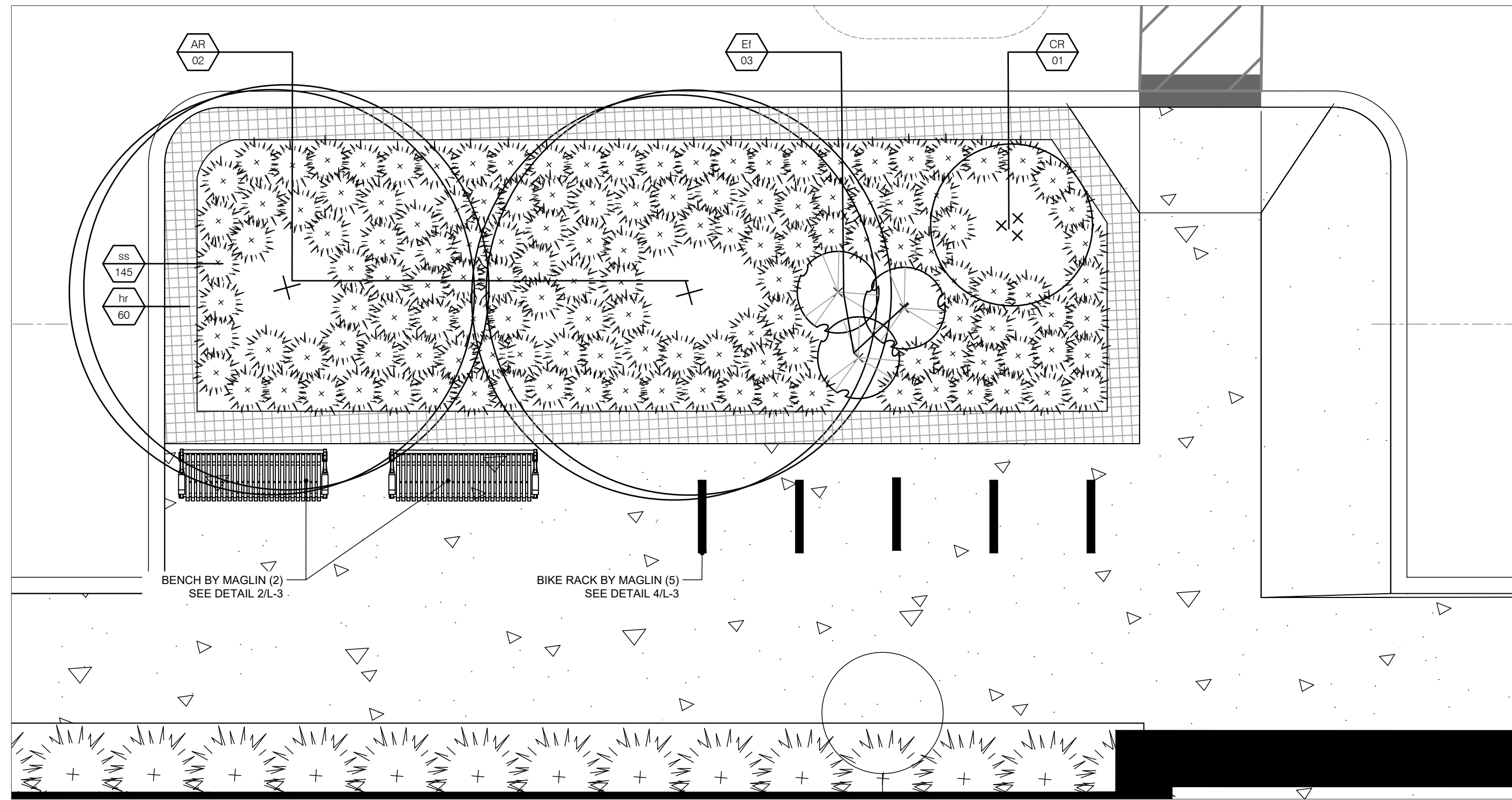
**SHEET TITLE**  
LANDSCAPE PLAN  
PHASE 2

**SHEET NUMBER** L-1  
**ISSUE** 01

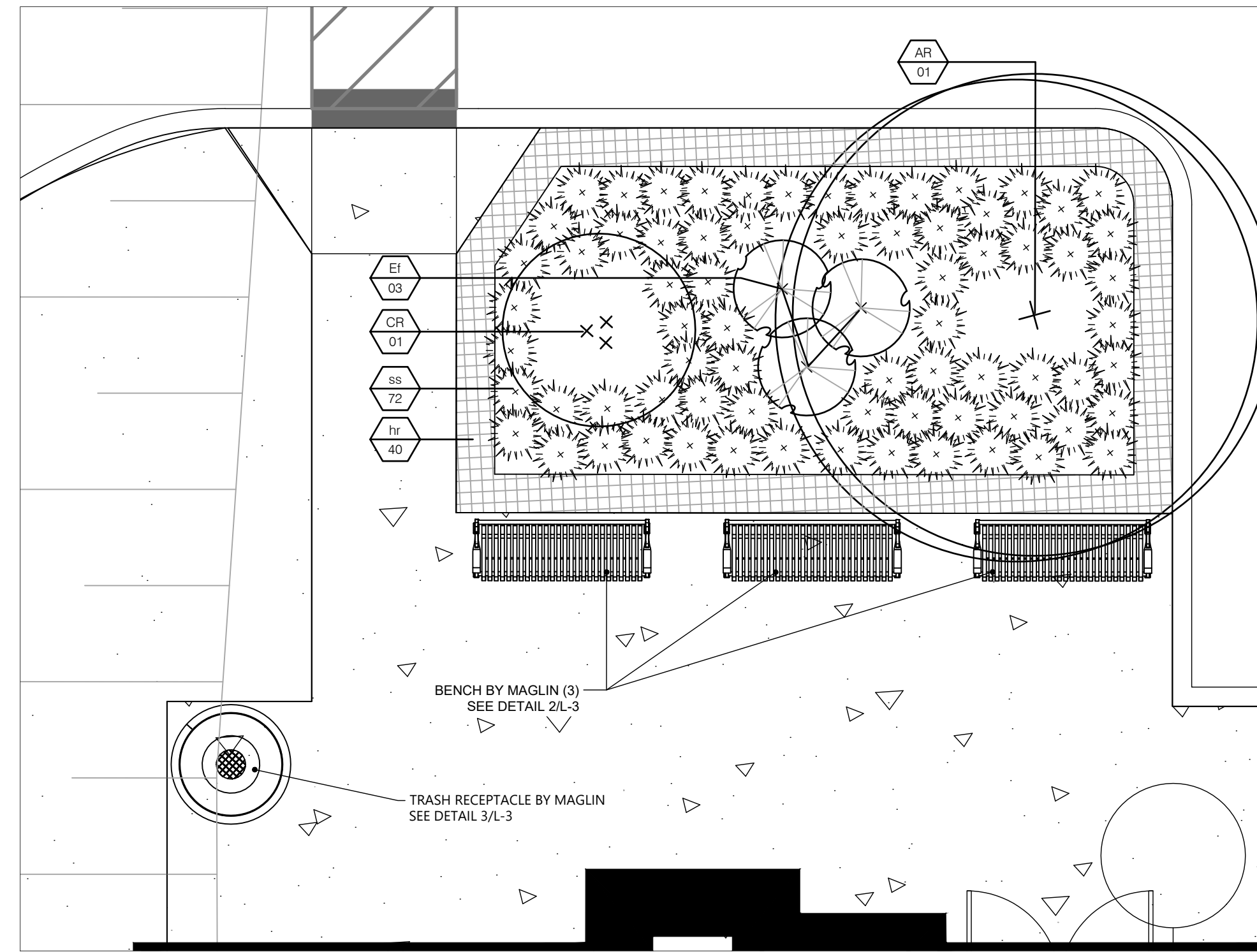
**TOWN OF CALEDON  
PLANNING  
RECEIVED**  
June 14, 2022



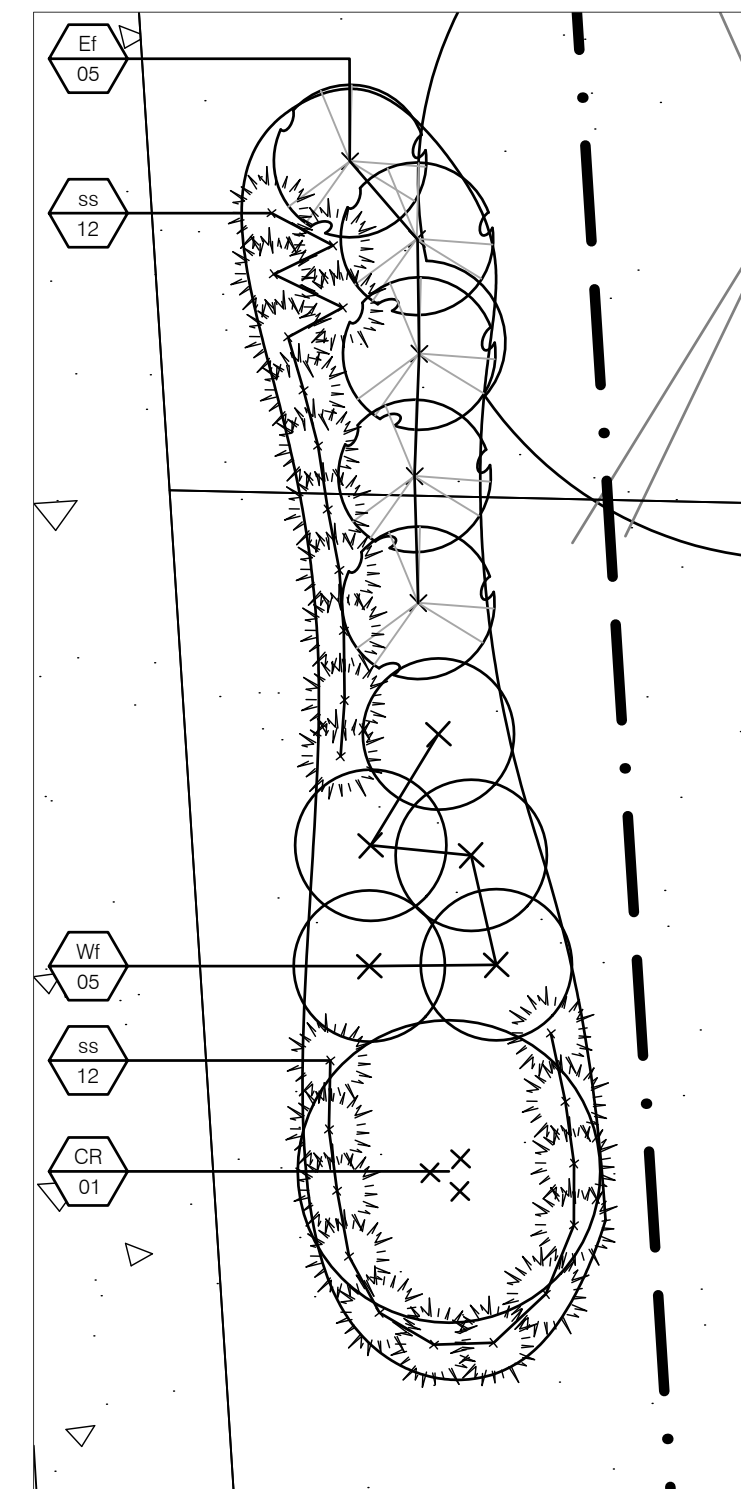
File Location: A:\135636\_12304Heart7\_0\_Production\05\_Landscape\Phase 2\Drawings\05\_Landscape\Phase 2\Drawings\135636.P.dwg Last Saved: April 7, 2022, 12:04:40 PM by Stacy Wilk Printed: Thursday, April 7, 2022, 12:04:40 PM by Stacy Wilk



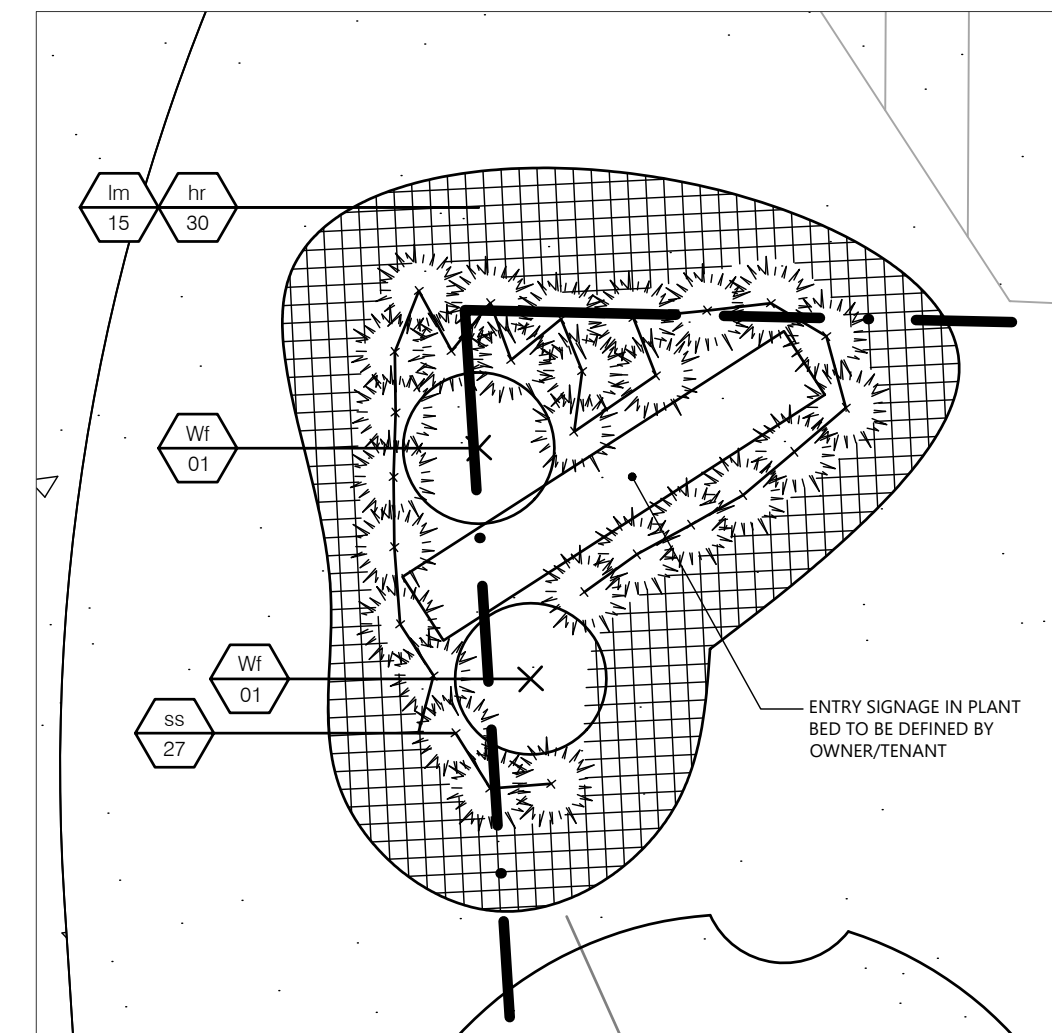
1 GARDEN BED PLANTING I  
L-2 1:50



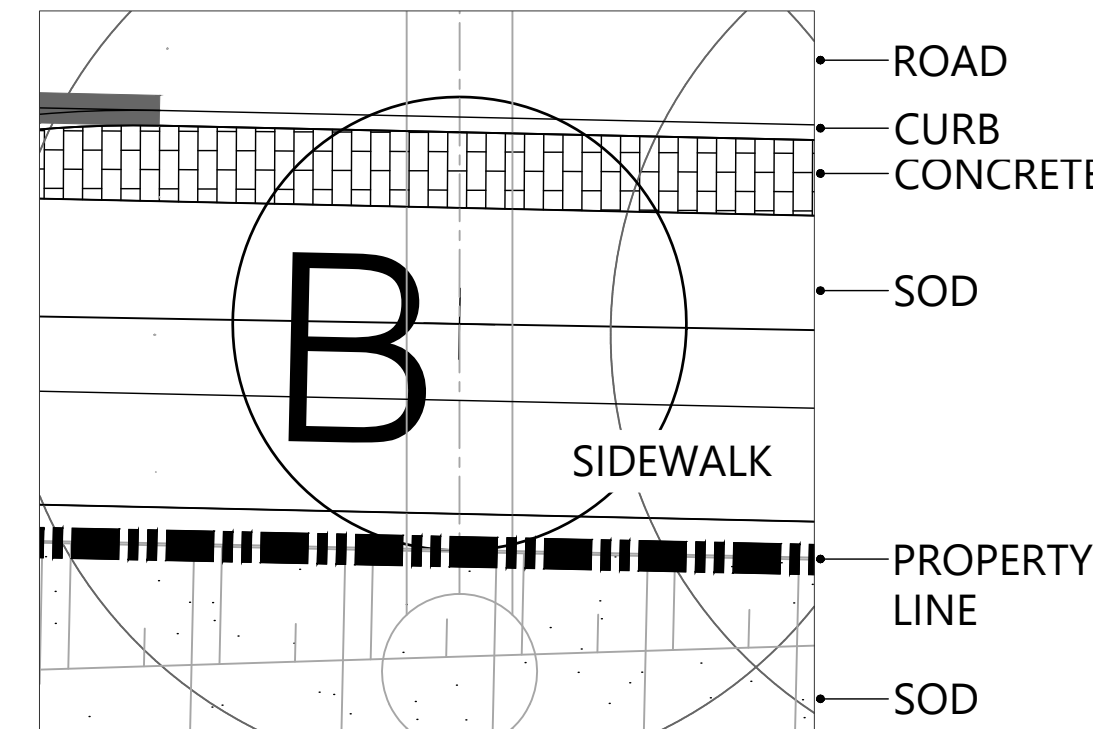
2 GARDEN BED PLANTING II  
L-2 1:50



3 GARDEN BED PLANTING III (TYP.)  
L-2 1:50



4 GARDEN BED PLANTING V (TYP.)  
L-2 1:50



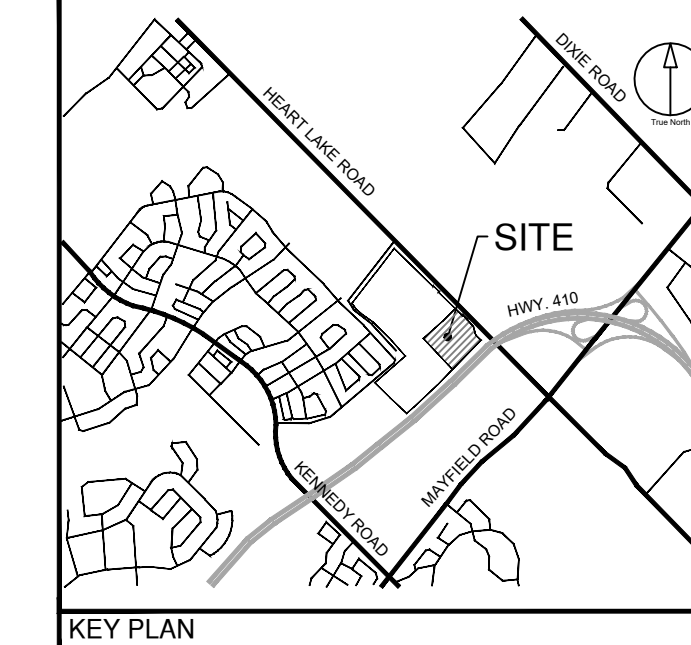
NOTE: BOULEVARD TO MATCH EXISTING CONDITIONS ON ABBOTTSIDE WAY EAST OF LEARMONT AVE.

5 BOULEVARD DETAIL  
L-2 1:50

L-3 SITE PLANT LIST			
KEY	BOTANICAL NAME	COMMON NAME	QNTY.
DECIDUOUS TREES			
AR	Acer rubrum 'Brandywine'	Brandywine Maple	3
CR	Cornus racemosa	Gray Dogwood	3
			TOTAL 6
SHRUBS			
EI	Euonymus fortunei 'Sarcocoe'	Sarcocoe Euonymus	11
WI	Weigela florida 'Rumba'	Rumba Weigela	11
			TOTAL 22
PERENNIALS / GRASSES			
IR	Hemerocallis 'Rocket City'	Rocket City Daylily	190
IM	Liriope muscari 'Big Blue'	Giant Lily Turf	45
SS	Schizachyrium scoparium	Little Bluestem	322
			TOTAL 557

MASTER STREET PLANT LIST										
KEY	BOTANICAL NAME	COMMON NAME	CAL.	SIZE	COND.	MATURE HEIGHT (m)	MATURE SPREAD (m)	O.C. SPACING (m)	QNTY.	%
DECIDUOUS TREES										
A	Acer rubrum	Red Maple	70mm		W.B.	15	12.0	8.0	5	17
B	Celtis occidentalis	Hackberry	70mm		W.B.	18.0	16.0	8.0	4	14
C	Gleditsia triacanthos var. inermis 'Halka'	Halka Honeylocust	70mm		W.B.	15.0	14.0	8.0	4	14
D	Quercus macrocarpa	Bur Oak	70mm		W.B.	18.0	13.0	8.0	3	10
E	Tilia x euchlora	Crimean Linden	70mm		W.B.	17.0	10.0	8.0	5	17
F	Quercus rubra	Red Oak	70mm		W.B.	16.0	15.0	8.0	5	17
G	Ulmus x homestead	Homestead Elm	70mm		W.B.	18.0	12.0	8.0	3	10
									TOTAL	29 100%

MASTER SITE PLANT LIST										
KEY	BOTANICAL NAME	COMMON NAME	CAL.	SIZE	COND.	MATURE HEIGHT (m)	MATURE SPREAD (m)	O.C. SPACING (m)	QNTY.	%
DECIDUOUS TREES										
AR	Acer rubrum 'Brandywine'	Brandywine Maple	60mm		W.B.	10.0	6.0	6.0	16	15
CC	Carpinus caroliniana	Blue Beech	60mm		W.B.	10.0	10.0	8.0	5	5.0
CR	Cornus racemosa	Gray Dogwood	Clump	200cm	W.B.	10.0	10.0	10.0	39	37
GT	Gleditsia triacanthos var. inermis	Thornless Honeylocust	60mm		W.B.	18.0	13.0	6.0	10	9
PSK	Prunus serrulata 'Kwanzan'	Kwanzan Flowering Cherry	60mm		W.B.	10.0	6.0	6.0	15	14
QR	Quercus rubra	Red Oak	60mm		W.B.	16.0	15.0	8.0	5	5.0
TA	Tilia americana 'Redmond'	Redmond Basswood	60mm		W.B.	20.0	10.0	8.0	2	2
UH	Ulmus x homestead	Homestead Elm	60mm		W.B.	18.0	12.0	8.0	13	12
									TOTAL	105 100%
CONIFEROUS TREES										
PG	Picea glauca	White Spruce		200cm	W.B.	25.0	8.0	8.0	11	37
PP	Picea pungens	Colorado Spruce		200cm	W.B.	18.0	6.0	6.0	9	30
PS	Pinus strobus	Eastern White Pine		200cm	W.B.	24.0	10.0	8.0	10	33
									TOTAL	30 100%
SHRUBS										
EI	Euonymus fortunei 'Sarcocoe'	Sarcocoe Euonymus		50cm	5 gal	1.3	1.3		143	
SJ	Spiraea japonica 'Goldflame'	Goldflame Spirea		40cm	3 gal	1.0	1.3		48	
WI	Weigela florida 'Rumba'	Rumba Weigela		40cm	3 gal	1.0	1.3		83	
									TOTAL	274
PERENNIALS / GRASSES										
ag	Andropogon gerardii	Big Blue Stem			1 gal	2.0	1.0	1.0	273	
IR	Hemerocallis 'Rocket City'	Rocket City Daylily			1 gal	0.9	0.6		190	
IM	Liriope muscari 'Big Blue'	Giant Lily Turf			1 gal	0.5	0.4		45	
PV	Panicum virgatum	Switch Grass			1 gal	2.0	1.0	1.0	305	
SS	Schizachyrium scoparium	Little Bluestem			1 gal	1.3	0.7		790	
									TOTAL	1603



Town of Caledon  
**APPROVED AS NOTED**

This approval constitutes a general review and does not certify dimensional accuracy.

This approval is subject to further certification of the "as recorded" works by a Professional Engineer of the Province of Ontario.

Date: \_\_\_\_\_  
Approved By: \_\_\_\_\_  
Print Name: \_\_\_\_\_

CLIENT  
**BROCCOLINI**

2680 SKYMARK AVENUE, SUITE 800  
MISSISSAUGA, ON. L4W5L6

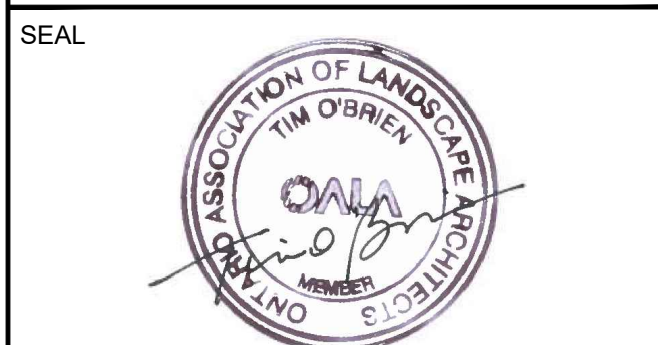
COPYRIGHT  
This drawing has been prepared solely for the intended use. This any reproduction or distribution for any purpose other than authorized by IBI Group is forbidden. Written dimensions shall have precedence over scaled dimensions. Contractors shall verify and be responsible for all dimensions and conditions on the job, and IBI Group shall be informed of any variations from the dimensions and conditions shown on the drawing. Shop drawings shall be submitted to IBI Group for general confirmation before proceeding with fabrication.

IBI Group Professional Services (Canada) Inc.  
is a member of the IBI Group of companies.

ISSUES		
No.	DESCRIPTION	DATE
1	ISSUED FOR ZBA AND SPA	APR 6, 2022

- LEGEND
- TOPSOIL AND SOD AS SPECIFIED  
MINIMUM 300mm TOPSOIL DEPTH
  - CONCRETE PAVING
  - PROPOSED DECIDUOUS STREET TREE
  - PROPOSED DECIDUOUS SHADE TREE
  - PROPOSED DECIDUOUS MULTISTEM TREE
  - PROPOSED DECIDUOUS ORNAMENTAL TREE
  - PROPOSED CONIFEROUS TREE
  - PROPOSED DECIDUOUS SHRUBS
  - PROPOSED BROAD-LEAF EVERGREEN SHRUBS
  - PROPOSED PERENNIALS
  - PROPOSED ORNAMENTAL GRASSES
  - PLANT SPECIES
  - QUANTITY
  - DETAIL NUMBER
  - SHEET NUMBER

**NOT FOR CONSTRUCTION**



PROJECT  
**12304 HEART LAKE ROAD**

CALEDON, ON. L7C 2J2

PROJECT NO:  
**135636**

DRAWN BY:  
**SW**

PROJECT MGR:  
**SA**

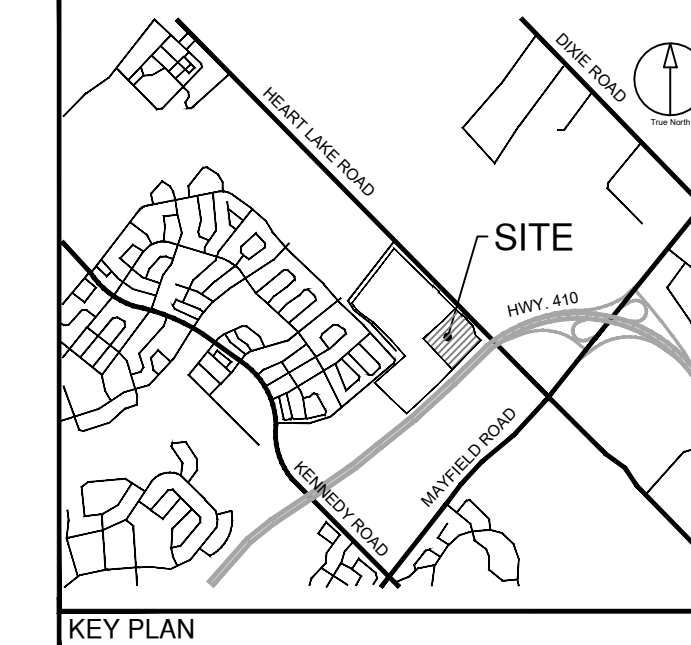
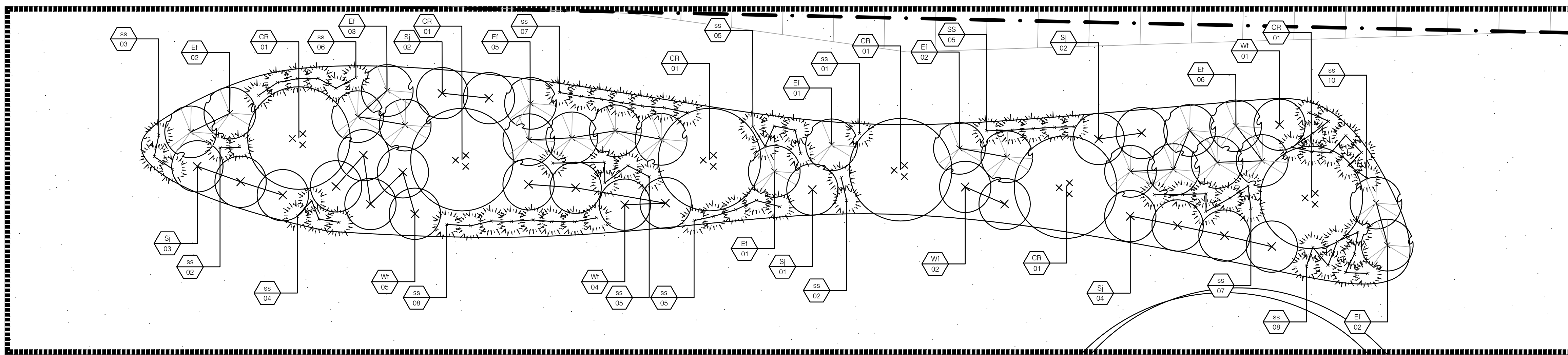
CHECKED BY:  
**TO**

APPROVED BY:  
**TO**

SHEET TITLE  
**LANDSCAPE PLAN PHASE 2**

SHEET NUMBER  
**L-2**

ISSUE  
**01**



**CLIENT**  
**BROCCOLINI**  
 2680 SKYMARK AVENUE, SUITE 800  
 MISSISSAUGA, ON. L4W5L6

**COPYRIGHT**  
 This drawing has been prepared solely for the intended use. This any reproduction or distribution for any purpose other than authorized by IBI Group is forbidden. Written dimensions shall have precedence over scaled dimensions. Contractors shall verify and be responsible for all dimensions and conditions on the job, and IBI Group shall be relieved of any liability from the dimensions and conditions shown on the drawing. Shop drawings shall be submitted to IBI Group for general concurrence before proceeding with fabrication.  
 IBI Group Professional Services (Canada) Inc.  
 is a member of the IBI Group of companies.

**Town of Caledon  
 APPROVED  
 AS NOTED**

This approval constitutes a general review and does not certify dimensional accuracy.  
 This approval is subject to further certification of the "as recorded" works by a Professional Engineer of the Province of Ontario.

Date: \_\_\_\_\_  
 Approved By: \_\_\_\_\_  
 Print Name: \_\_\_\_\_

**ISSUES**

No.	DESCRIPTION	DATE
1	ISSUED FOR ZBA AND SPA	APR 6, 2022

**LEGEND**

	TOPSOIL AND SOD AS SPECIFIED MINIMUM 300mm TOPSOIL DEPTH
	CONCRETE PAVING
	PROPOSED DECIDUOUS SHADE TREE
	PROPOSED DECIDUOUS MULTISTEM TREE
	PROPOSED DECIDUOUS ORNAMENTAL TREE
	PROPOSED DECIDUOUS SHRUBS
	PROPOSED BROAD-LEAF EVERGREEN SHRUBS
	PROPOSED PERENNIALS
	PROPOSED ORNAMENTAL GRASSES
	PLANT SPECIES
	QUANTITY

**1**  
 L-3 GARDEN BED PLANTING VI (TYP.)  
 1:50

**300 SERIES**  
**MBE-0310-00001**  
 Legacy # MLB310-M

**MATERIALS:** Bench ends are made from solid cast aluminum. The seat employs flat bar straps and H.S. steel tube.  
**FINISH:** All steel components are protected with E-Coat rust proofing. The Maglin Powdercoat System provides a durable finish on all metal surfaces.  
**INSTALLATION:** The bench is delivered pre-assembled. Holes (0.5") are provided in each foot for securing to base.  
**TO SPECIFY:** Select MBE-0310-00001  
 Choose:  
 - Powdercoat Color

HEIGHT: 31.16" (79.1cm)    LENGTH: 71.25" (177.8cm)    DEPTH: 22.75" (57.8cm)    WEIGHT: 134 lbs (61kg)

**MAGLIN**  
 Site Furniture  
 1 800 716 5506  
 P 417 295 1933  
 www.maglin.com  
 info@maglin.com

- All drawings, specifications, design and details on this page remain the property of Maglin Site Furniture Inc. and may not be used without Maglin authorization.  
 - Details and specifications may vary due to continuing improvements of our products.

**2**  
 L-3 BENCH BY MAGLIN  
 NTS

**200 SERIES**  
**MTR-0250-00001**  
 Legacy # MLWR250-32-BC

**DESCRIPTION:** 200 Series - 250 Trash Receptacle: Heavy Duty Steel Flat Bar and H.S. Steel Frame, Bottles/Cans Lid, 1 x 32 Gallon Polyethylene Liner.  
**FINISH:** All steel components are protected with E-Coat rust proofing. The Maglin Powdercoat System provides a durable finish on all metal surfaces.  
**INSTALLATION:** The trash container is delivered pre-assembled. Holes (0.5") are provided in each mounting foot for securing to base.  
**TO SPECIFY:** Select MTR-0250-00001  
 Choose:  
 - Powdercoat Color

HEIGHT: 35 1/2" (90cm)    DIAMETER: 24 5/8" (62.5cm)    WEIGHT: 194.5lbs (88.2kg)

**MAGLIN**  
 Site Furniture  
 1 800 716 5506  
 P 417 295 1933  
 www.maglin.com  
 info@maglin.com

- All drawings, specifications, design and details on this page remain the property of Maglin Site Furniture Inc. and may not be used without Maglin authorization.  
 - Details and specifications may vary due to continuing improvements of our products.

**3**  
 L-3 TRASH RECEPTACLE BY MAGLIN  
 NTS

**500 SERIES**  
**MBR-0500-00003**  
 Legacy # MBR500-S

**Sustainability Facts**  
 Unit Size One (1) MBR-0500-00001 Bike Rack  
 Carbon footprint (GWP) 103 kg CO2-Eq  
 Recycled in kilograms of carbon dioxide equivalent 1770 kg-Eq  
 Total energy use (EPD) 1770 MJ-Eq  
 Measured in megajoules of energy equivalent  
 Water use (WUP) 0.843 m3 water  
 Measured in cubic metres of water  
 Material recyclability 100%  
**LEED v4.1 Credits**  
 Type III Environmental Product Declaration  
 Material Inventory  
 Low VOC Finishes  
 Free of Red List substances

**DESCRIPTION:** 500 Series - 500 Bike Rack: H.S. Steel Tube, Surface Mount, 2 Bike Configuration  
**FINISH:** All steel components are protected with E-Coat rust proofing. The Maglin Powdercoat System provides a durable finish on all metal surfaces.  
**INSTALLATION:** The bike rack is delivered pre-assembled. It is available with either a surface mount or direct burial installation option.  
**TO SPECIFY:** Select MBR-0500-00003  
 Choose:  
 - Powdercoat Color

HEIGHT: 35" (88.9cm)    LENGTH: 19.25" (48.9cm)    WEIGHT: 13.27 lbs (6.0kg)

**MAGLIN**  
 Site Furniture  
 1 800 716 5506  
 P 417 295 1933  
 www.maglin.com  
 info@maglin.com

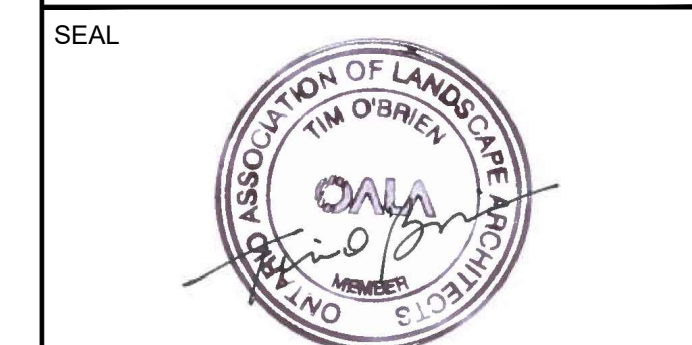
- All drawings, specifications, design and details on this page remain the property of Maglin Site Furniture Inc. and may not be used without Maglin authorization.  
 - Details and specifications may vary due to continuing improvements of our products.

**4**  
 L-3 BIKE RACK BY MAGLIN  
 NTS

**L-3 SITE PLANT LIST - MASTER ON L-2**

KEY	BOTANICAL NAME	COMMON NAME	QNTY.
<b>DECIDUOUS TREES</b>			
CR	Cornus racemosa	Gray Dogwood	36
			<b>TOTAL</b> 36
<b>SHRUBS</b>			
EI	Euonymus fortunei 'Sarcocoe'	Sarcocoe Euonymus	132
SI	Spiraea japonica 'Goldflame'	Goldflame Spiraea	48
WI	Weigela florida 'Rumba'	Rumba Weigela	72
			<b>TOTAL</b> 252
<b>PERENNIALS / GRASSES</b>			
SS	Schizachyrium scoparium	Little Bluestem	468
			<b>TOTAL</b> 468

**NOT FOR CONSTRUCTION**



**PROJECT**  
 12304 HEART LAKE ROAD  
 CALEDON, ON. L7C 2J2

**PROJECT NO:**  
 135636

**DRAWN BY:** SW  
**CHECKED BY:** TO

**PROJECT MGR:** SA  
**APPROVED BY:** TO

**SHEET TITLE**  
 LANDSCAPE PLAN  
 PHASE 2

**SHEET NUMBER** L-3    **ISSUE** 01

SPECIFICATIONS

A. GENERAL

i) These Specifications are to be read in conjunction with the General Conditions of the contract, as prepared by and available at the offices of ...

ii) Prior to commencing work, the Contractor shall: 1. Become familiar with the plans, details, and specifications of this project. 2. Visit the site to ascertain and take account of existing conditions and any deviations from the plans in work by others, and 3. Finalize all design alternatives in consultation with the Landscape Architect.

iii) Prior to excavating, the Contractor shall verify the location of all underground utilities. In the event of a conflict between a proposed tree location and an underground service, the exact location of the tree shall be determined on site by the landscape architect and/or the Town's representative.

iv) The Contractor shall, at his or her own expense, repair any damage to existing utilities, structures, facilities, etc. done in the performance of his work.

v) All site work shall conform to the Canadian National Master Construction Specifications, a copy of which can be obtained from Construction Specifications Canada, 100 Lombard St., Suite 200, Toronto, Ontario M5C 1M3, Tel. (416) 777-2198, Fax (416) 777-2197. It is the responsibility of the Contractor to be thoroughly familiar with these specifications and their implications for this project.

B. PLANT MATERIAL

i) All plants shall be installed true to specified names, sizes, grades, etc., and shall conform to the standards of the Canadian Nursery Landscapes Association.

ii) All plants shall be nursery grown in a hardiness zone appropriate to site conditions, as published by Agriculture Canada, titled 'Map of Plant Hardiness Zones in Canada'.

iii) In the event of a discrepancy in plant quantity between the Planting Plan and the Plant List, the Planting Plan shall govern.

iv) The Contractor shall make plants available for inspection by the Landscape Architect and/or the Town's representative prior to shipping to the site. This does not limit the right of the Landscape Architect and/or the Town's representative to later reject plant material that is of poor quality, damaged during shipping or installation, performing poorly while the guarantee period is still in effect, or otherwise does not conform to the specifications.

v) Plant substitutions must be approved in writing by the Town and the Landscape Architect prior to delivery of the material to the site. All substitutions shall be recorded on the as-recorded drawings and planting chart.

vi) The Contractor shall use standard industry methods for planting trees and shrubs. Trees shall be lured to give the best appearance; they shall also be galled or staked immediately after planting and as detailed on the drawings.

specifications continued on next panel ...

Table with columns: TOWN OF CALEDON, STANDARD No., NO., REVISION, APRD, DATE, STANDARD No. 701. Includes revision history for Streetscape Specifications Part 1.

SPECIFICATIONS

C. BED PREPARATION

i) The Contractor shall scarify the sides and bottom of excavated tree pits and shrub beds prior to backfilling. In areas with heavy clay soils, tree and planting beds shall be backfilled to the specified depths with: 2 Parts 'triple mix', delivered to the site, to be well-mixed with ...

ii) Tree pits shall be constructed with saucers and mulch as detailed.

D. PRELIMINARY ACCEPTANCE

i) When landscaping is completed, the Consulting Landscape Architect shall submit a Certificate of Completion for preliminary acceptance to the Town of Caledon certifying that all landscape works have been 100% completed in accordance with the approved plans.

ii) The Consulting Landscape Architect shall prepare a Summary Chart, indicating the plant species, quantity, location, planting dates(s), and any other relevant information, as requested by the Municipality.

iii) Upon receipt of the Certificate of Completion, Town Staff will conduct a preliminary inspection of the site and, provided that the works are in satisfactory condition, will grant preliminary acceptance of the landscaping.

E. INTERIM ACCEPTANCE

i) One year after Preliminary Acceptance is granted by the Town, the Consulting Landscape Architect shall submit a Certificate of Completion for Interim Acceptance to the Town of Caledon certifying that all maintenance requirements as outlined in Section 1 and in accordance with the approved plans have been completed.

ii) The Consulting Landscape Architect shall update the Summary Chart, indicating any modifications to approved substitutions, maintenance information, and any other relevant information as requested by the Municipality.

iii) Upon the receipt of the Certificate of Completion, Town Staff will conduct an interim inspection of the site and, provided the works are in satisfactory condition, will grant Interim Acceptance of the landscaping.

F. GUARANTEE

i) All street/landscape planting shall carry a guarantee/maintenance of TWO (2) years, commencing from the date that written preliminary acceptance is granted by the Town of Caledon. In each of the next two years, the Consulting Landscape Architect shall conduct an inspection and prepare a report, recommending the replacements and/or works needed to achieve the intent of the approved landscaping plan. All replacements shall be recorded in the Inspection Summary Chart. The Consulting Landscape Architect shall file a copy of the report and/or Summary Chart with the Municipality.

specifications continue on next panel ...

Table with columns: TOWN OF CALEDON, STANDARD No., NO., REVISION, APRD, DATE, STANDARD No. 702. Includes revision history for Streetscape Specifications Part 2.

SPECIFICATIONS

i) Replacement plant material and repaired work shall be guaranteed for a minimum TWO (2) years from the date of replacement, and will not be granted final acceptance until the guarantee has expired or as otherwise determined by Town Staff.

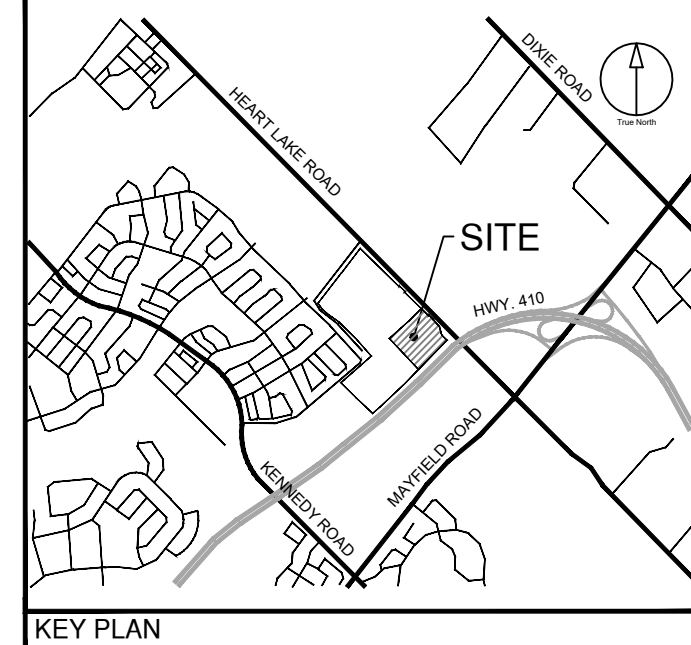
ii) The maintenance of all landscape installations throughout the guarantee period shall include but not limited to the following: 1) proper irrigation to ensure optimum growth of trees and shrubs, 2) cultivation and weeding of tree pits and planting beds, 3) insect and disease control, and 4) pruning and fertilizing, as required or as directed by the Municipality or Consulting Landscape Architect. 5) replace all dead plant materials as identified by the Municipality.

H. CERTIFICATE OF ASSUMPTION

i) At the end of the guarantee period, the Contractor shall remove all tree stakes, and bark wrap, and shall add extra mulch where necessary. And/or additional items as directed by the Municipality.

ii) When these final tasks have been completed, the Consulting Landscape Architect will provide the Town with all items as outlined in the Development Standards. All landscape work will then be inspected by the Municipality and, if satisfied that all work has been completed in accordance with the approved landscaping plans, will issue a Certificate of Assumption and release any outstanding funds.

Table with columns: TOWN OF CALEDON, STANDARD No., NO., REVISION, APRD, DATE, STANDARD No. 703. Includes revision history for Streetscape Specifications Part 3.



Town of Caledon APPROVED AS NOTED. This approval constitutes a general review and does not certify dimensional accuracy. This approval is subject to further certification of the 'as recorded' works by a Professional Engineer of the Province of Ontario.

CLIENT: BROCCOLINI, 2680 SKYMARK AVENUE, SUITE 800, MISSISSAUGA, ON. L4W5L6. IBI Group Professional Services (Canada) Inc. is a member of the IBI Group of companies. ISSUES table with 1 issue: ISSUED FOR ZBA AND SPA, DATE: APR 6, 2022. LEGEND section.

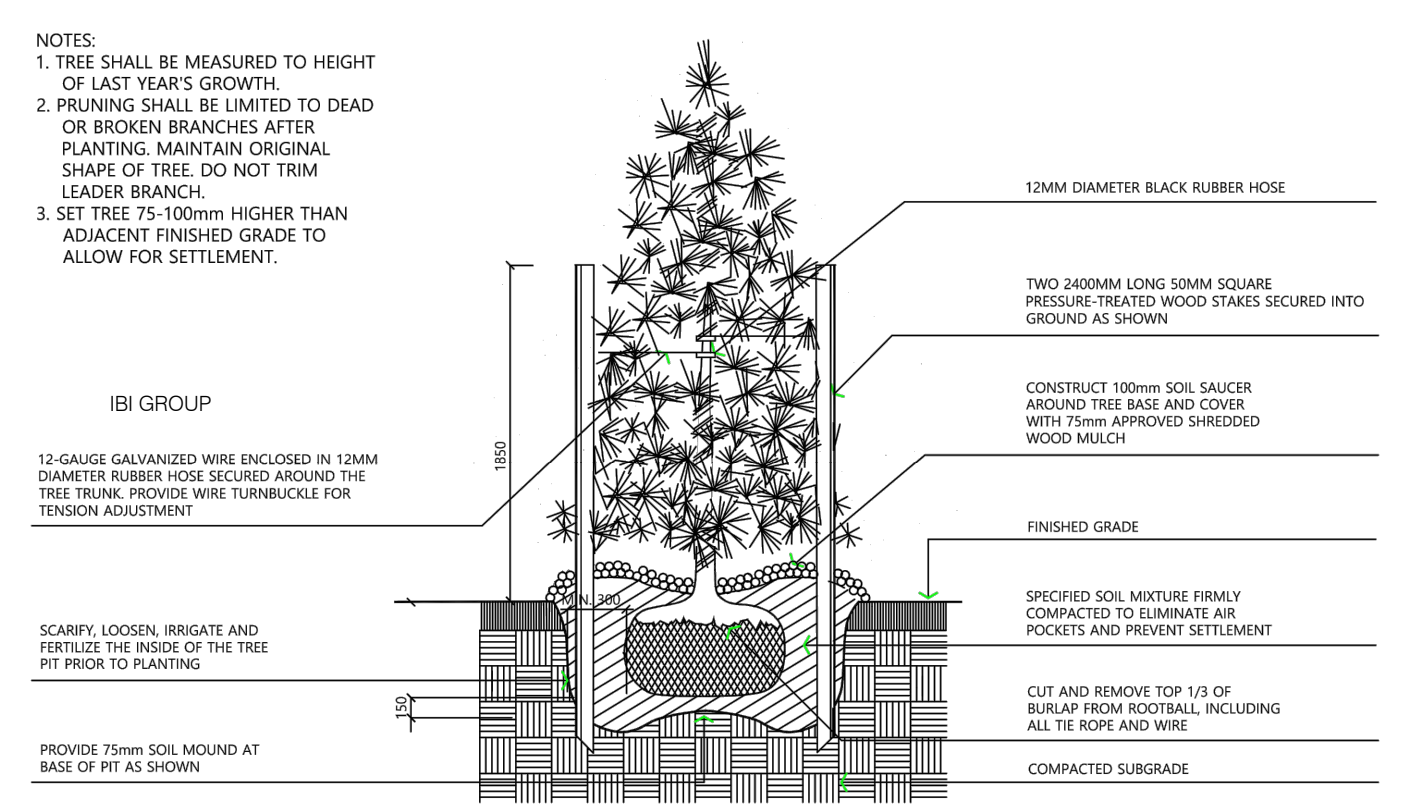


Table with columns: TOWN OF CALEDON, STANDARD No., NO., REVISION, APRD, DATE, STANDARD No. 801. Includes revision history for Coniferous Tree Planting.

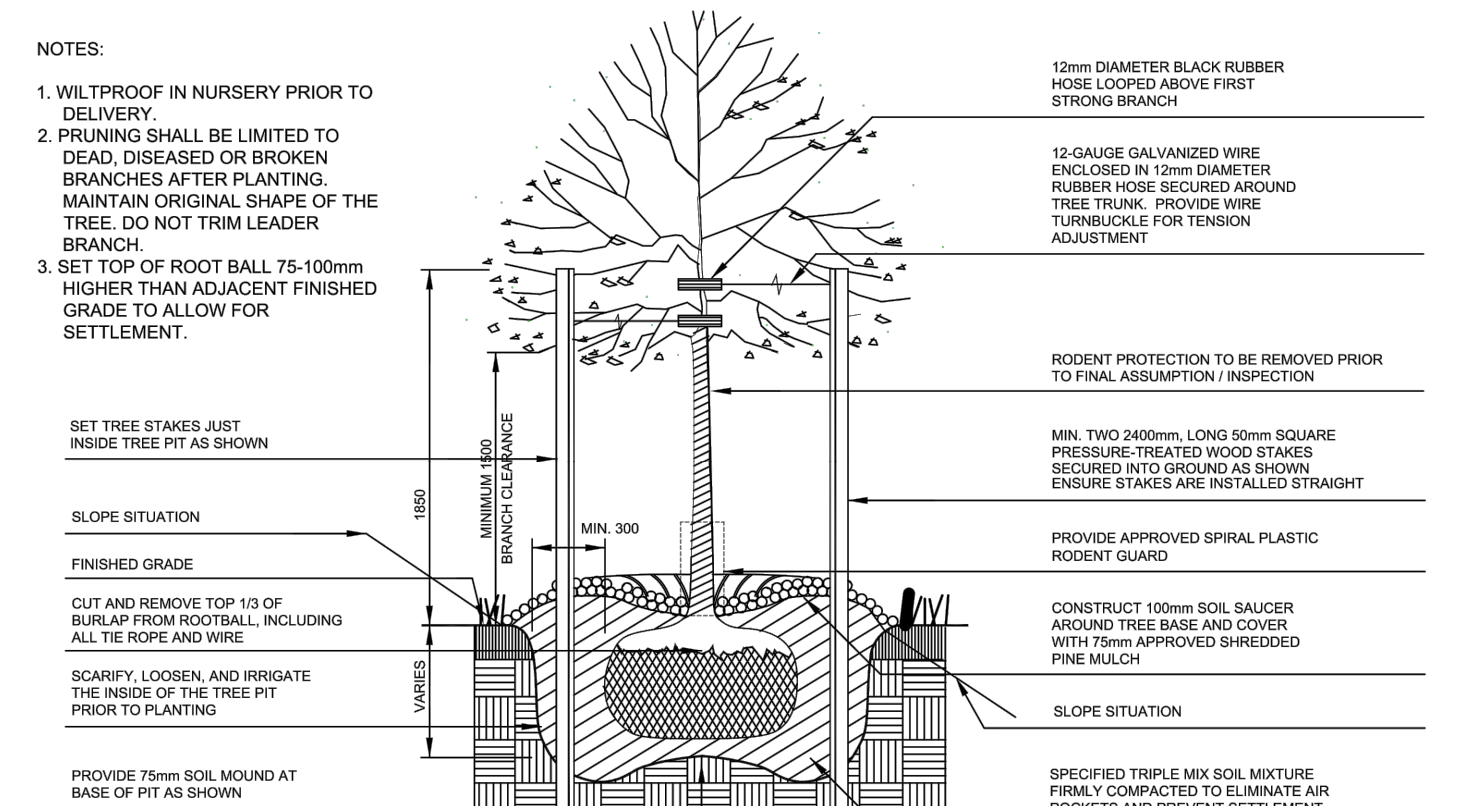


Table with columns: TOWN OF CALEDON, STANDARD No., NO., REVISION, APRD, DATE, STANDARD No. 800. Includes revision history for Deciduous Tree Planting.

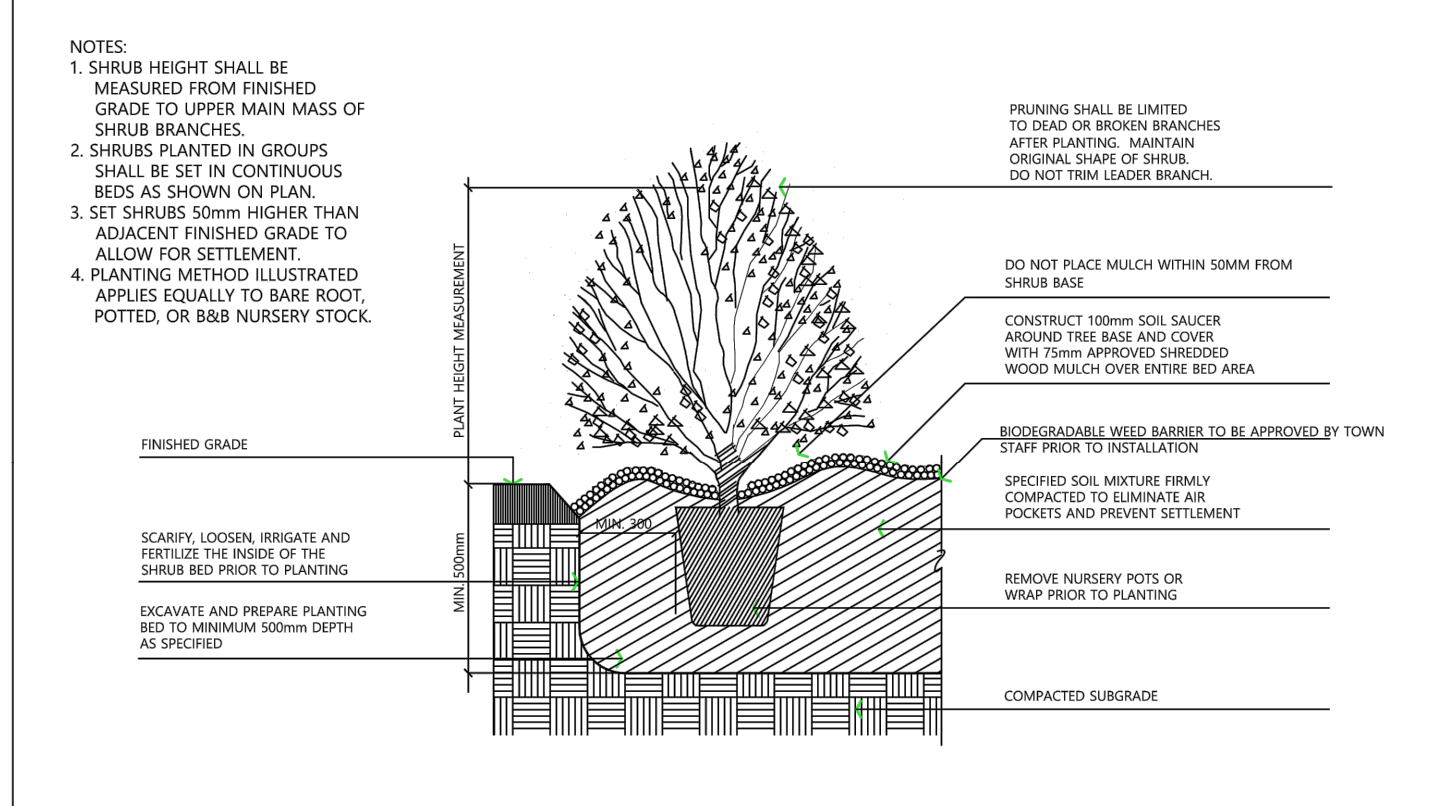


Table with columns: TOWN OF CALEDON, STANDARD No., NO., REVISION, APRD, DATE, STANDARD No. 802. Includes revision history for Shrub Planting.

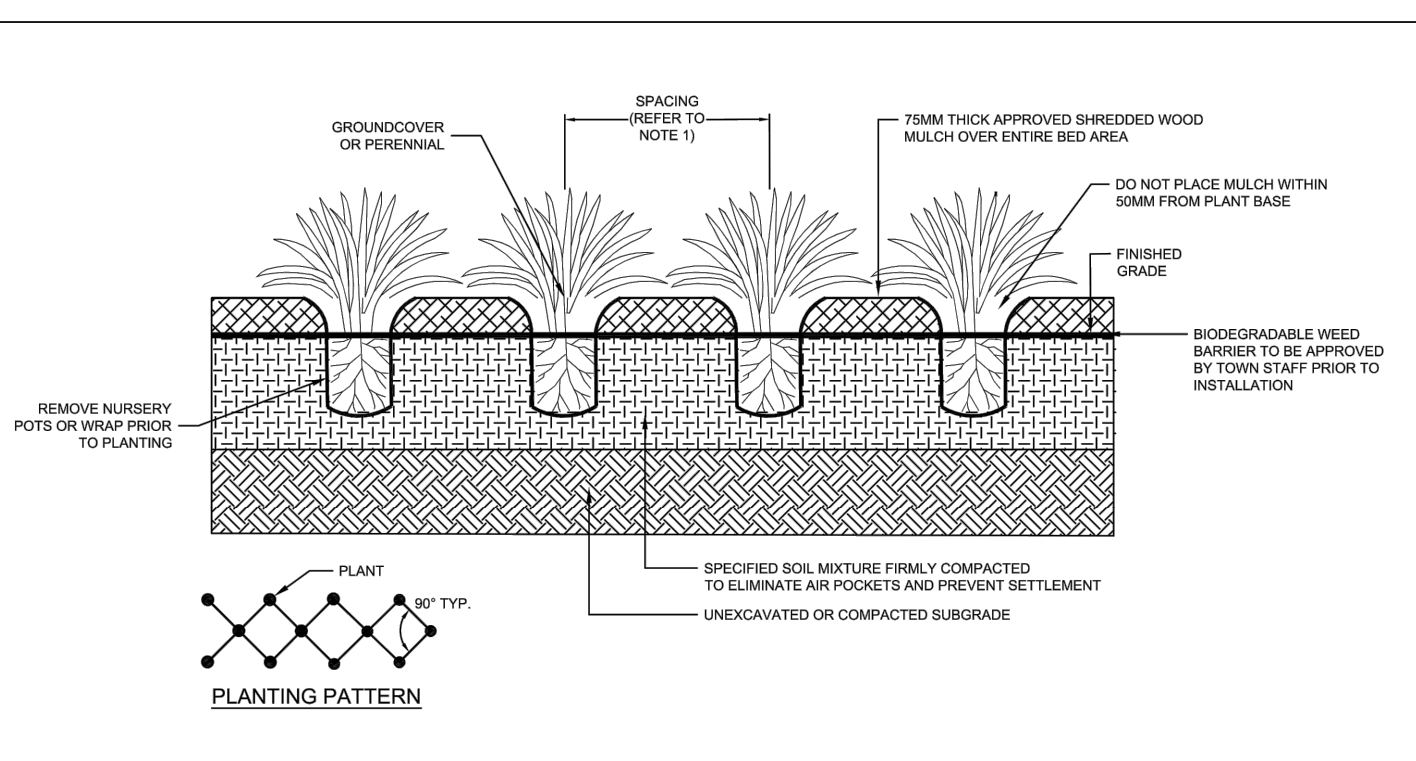


Table with columns: TOWN OF CALEDON, STANDARD No., NO., REVISION, APRD, DATE, STANDARD No. 803. Includes revision history for Groundcover and Perennial Planting Detail.

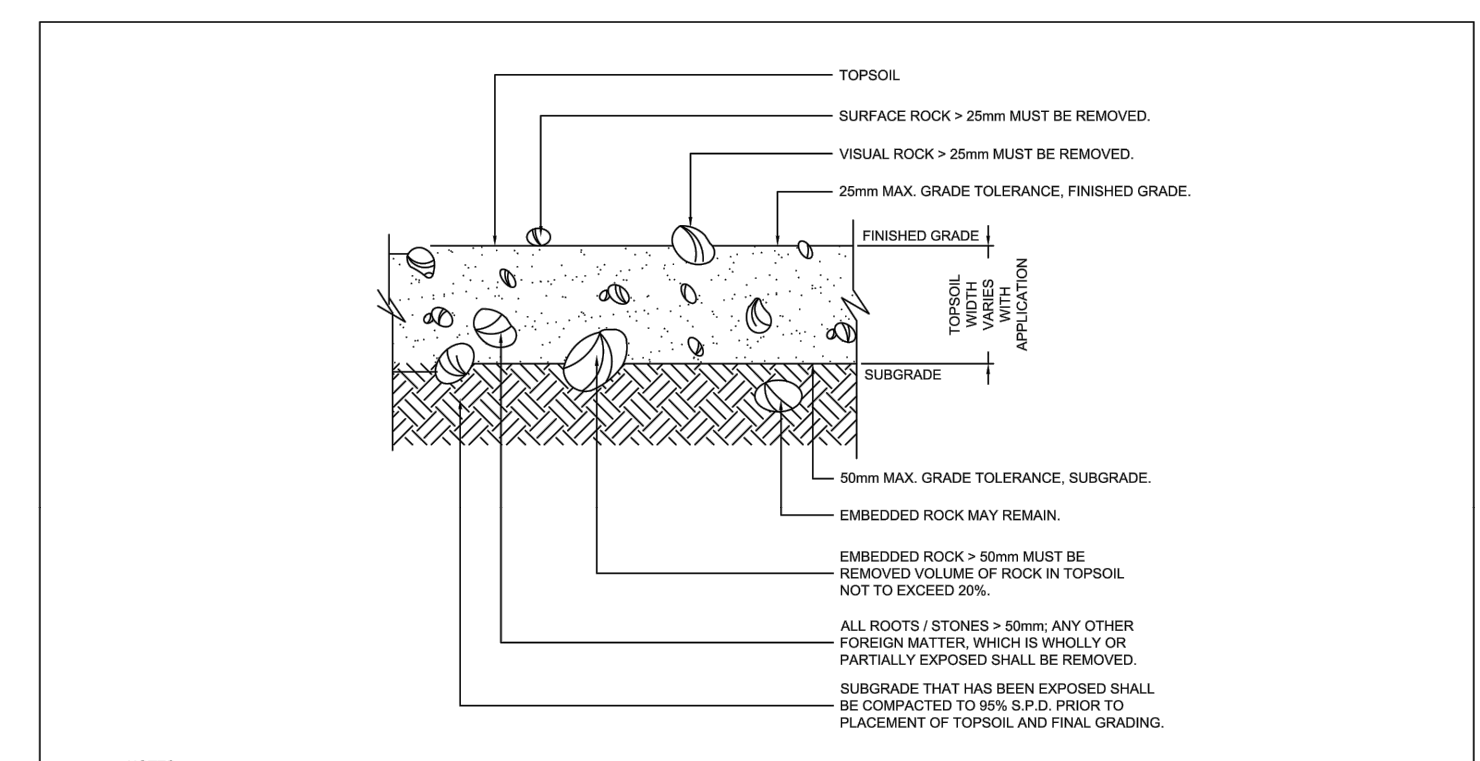


Table with columns: TOWN OF CALEDON, STANDARD No., NO., REVISION, APRD, DATE, STANDARD No. 805. Includes revision history for Topsoil/Subgrade Preparation Detail.

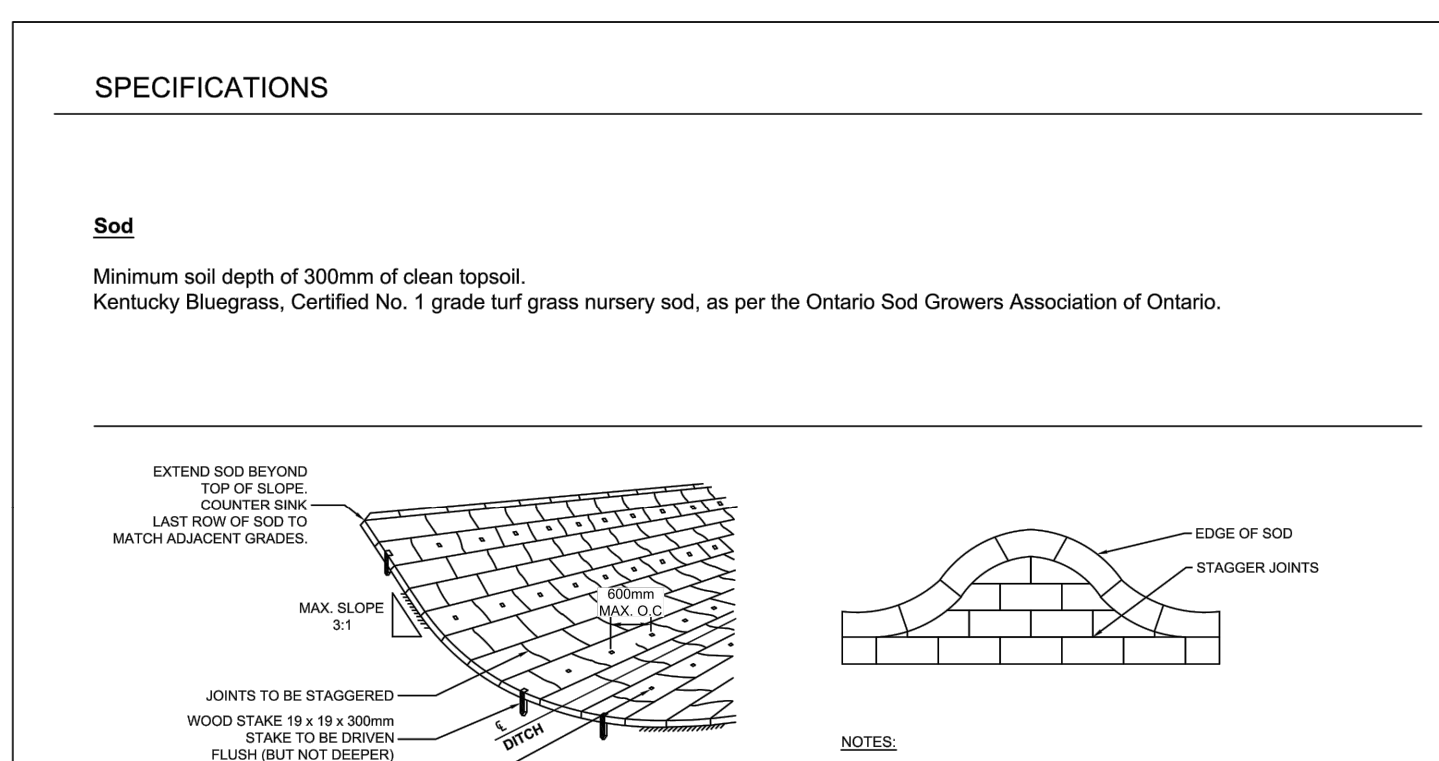


Table with columns: TOWN OF CALEDON, STANDARD No., NO., REVISION, APRD, DATE, STANDARD No. 709. Includes revision history for Sod Installation Detail.

NOT FOR CONSTRUCTION



PROJECT: 12304 HEART LAKE ROAD, CALEDON, ON. L7C 2J2. PROJECT NO: 135636. DRAWN BY: SW, CHECKED BY: TO. PROJECT MGR: SA, APPROVED BY: TO.

SHEET TITLE: LANDSCAPE DETAILS PHASE 2. SHEET NUMBER: L-4. ISSUE: 01.