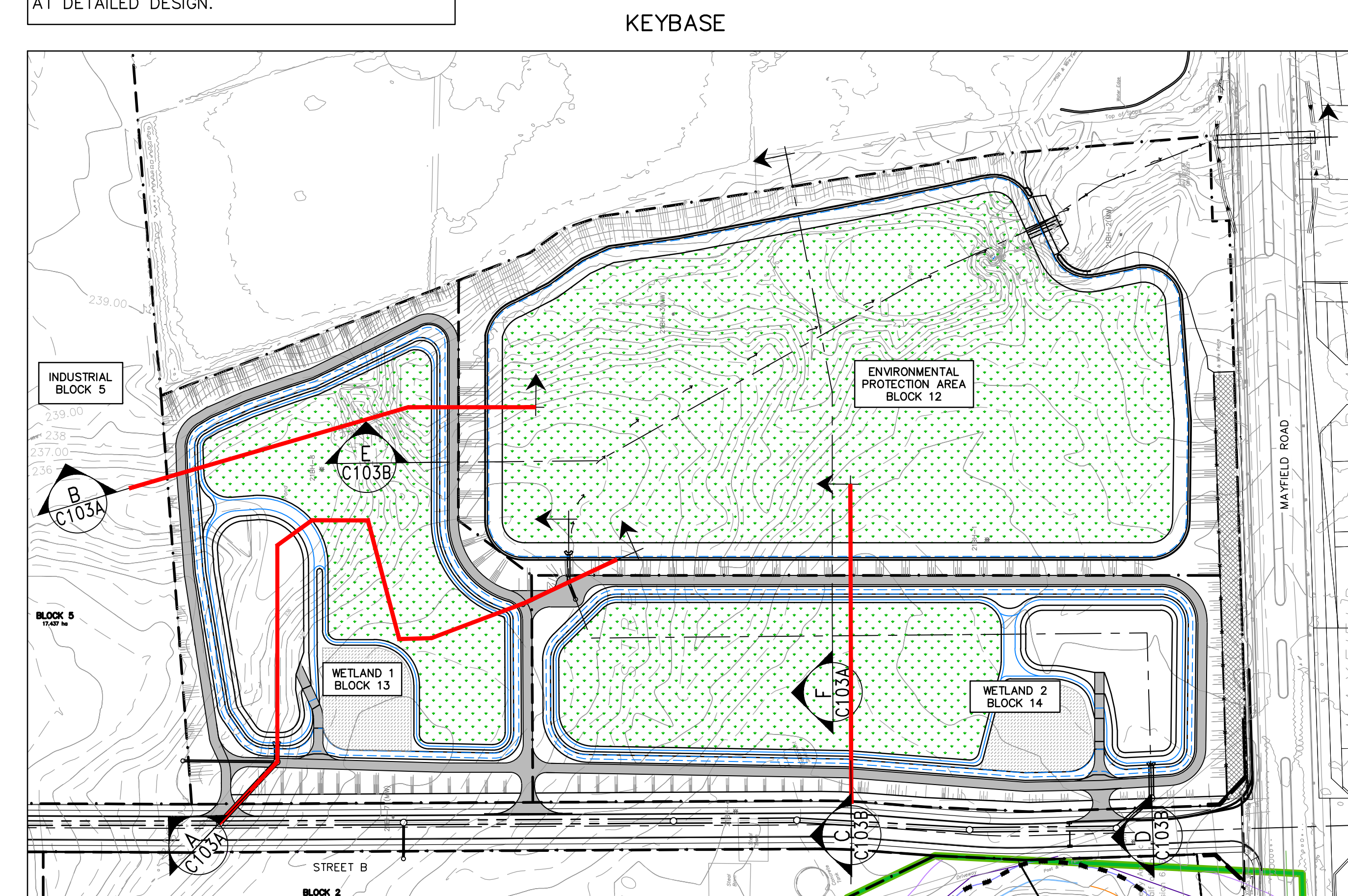
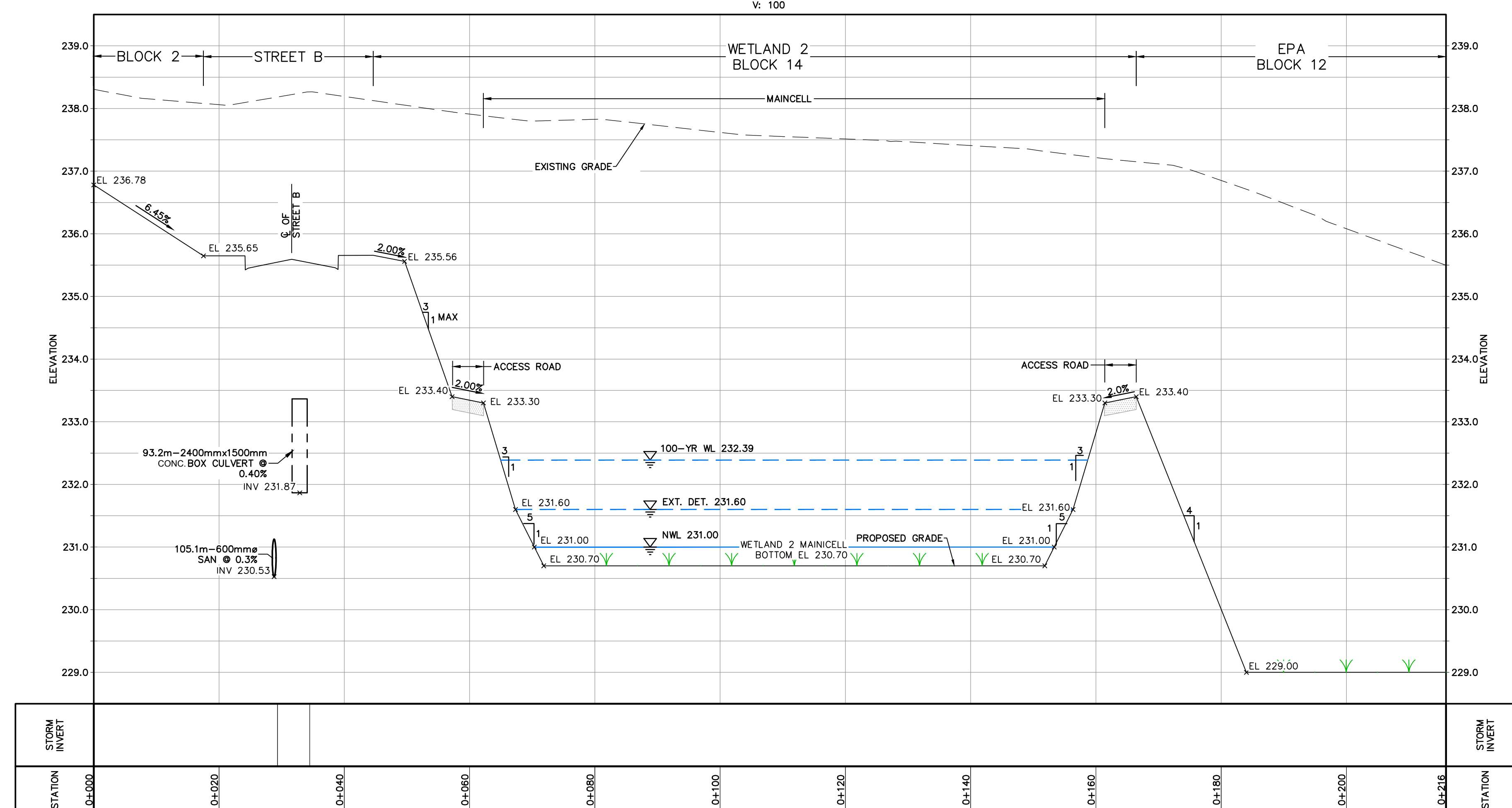


NOTE:  
IF REQUIRED, WETLANDS CLAY LINER THICKNESS TO BE SPECIFIED BY GEOTECHNICAL ENGINEERS AT DETAILED DESIGN.



TOWN OF CALEDON  
PLANNING  
RECEIVED  
October 31, 2023

SECTION C-C  
SCALE: H:500  
V: 100



2	RE-ISSUED FOR DPDS & CPA	2023/OCT/30
1	RE-ISSUED FOR DPDS & CPA	2023/APR/06
0	ISSUED FOR DPDS, CPA & ZBA	2021/JUN/28
No.	ISSUE / REVISION	YYYY/MM/DD

PROFESSIONAL ENGINEER  
A.V. SALTER  
100514324  
2023-10-30  
PROVINCE OF ONTARIO

PROFESSIONAL ENGINEER  
R.S. ARNER  
100107071  
2023-10-30  
PROVINCE OF ONTARIO

**BEARING NOTE:**  
BEARINGS ARE UTM GRID, DERIVED FROM GPS OBSERVATION USING THE "TORNET" GPS NETWORK OBSERVATIONS, UTM ZONE 12, NAD83 (CSRS) (2010.0) & (1993.0).  
SURVEY COMPLETED BY YOUNG & YOUNG SURVEYING INC. & J.BARNES LIMITED DATED 2021/OCT/07, 2021/OCT/14 & 2018/NOV/28, PROJECT Nos. 21-B7601-4, 21-B7601-5 & 18-50-368-201-A.

**ELEVATION NOTE:**  
EXISTING GROUND CONTOURS OUTSIDE OF SITE LIMITS AND INSIDE EXISTING FLOOD PLAIN BASED ON LEAS SURVEY FROM EQUATORSTUDIOS.  
ELEVATIONS HEREON ARE GEODETIC IN ORIGIN AND WERE DERIVED FROM GPS OBSERVATIONS USING THE "TORNET" GPS NETWORK AND ARE REFERRED TO THE CGD-1928-1918 DATUM.  
ELEVATION HEREON ARE GEODETIC IN ORIGIN AND WERE DERIVED FROM CITY OF BRAMPTON MONUMENT No. 04220595 (NAD ADJUSTMENT) HAVING A PUBLISHED ELEVATION OF 242.35m.

**SITE BENCHMARKS:**  
# 1: NAD HAVING ELEVATION 241.24m WAS SET 12.10m EAST OF THE SOUTHWEST CORNER OF THE PROPERTY ALONG AIRPORT ROAD.  
# 2: CUT CROSS HAVING ELEVATION 242.51m WAS SET ON THE NORTHEAST CORNER OF THE INTERSECTION BETWEEN WATFIELD ROAD AND TORBRAM ROAD.

**DRAFT PLAN NOTES:**  
DESIGN ELEMENTS ARE BASED ON DRAFT PLAN BY WESTON CONSULTING INC. DRAWING No. 22  
FILE No. 10208

**DRAWING NOTES:**  
THIS DRAWING IS THE EXCLUSIVE PROPERTY OF C.F. CROZIER & ASSOCIATES INC. AND THE REPRODUCTION OF ANY PART OF IT WITHOUT PRIOR WRITTEN CONSENT OF THIS OFFICE IS STRICTLY PROHIBITED.  
THE CONTRACTOR SHALL VERIFY ALL DIMENSIONS, LEVELS, AND DATUMS ON SITE AND REPORT ANY DISCREPANCIES OR OMISSIONS TO THIS OFFICE PRIOR TO CONSTRUCTION.  
THIS DRAWING IS TO BE READ AND UNDERSTOOD IN CONJUNCTION WITH ALL OTHER PLANS AND DOCUMENTS APPLICABLE TO THIS PROJECT. THIS DRAWING, ALL EXISTING UNDERGROUND UTILITIES TO BE VERIFIED IN THE FIELD BY THE CONTRACTOR PRIOR TO CONSTRUCTION.

**TULLAMORE LANDS  
TOWN OF CALEDON**

**STORMWATER MANAGEMENT  
FACILITY & ENVIRONMENTAL  
PROTECTION AREA SECTIONS**

**CROZIER  
CONSULTING ENGINEERS**

2800 HIGH POINT DRIVE  
SUITE 100  
MILTON, ON L9T 6P4  
905-875-0500 F  
905-875-4915 F  
WWW.CFCROZIER.CA

Drawn	A.V.S.	Checked	A.V.S./A.D.F.	Project No.	2022-5842
Design	J.S./R.S.A.	Checked	D.L./R.S.A.	Drawn	C103A