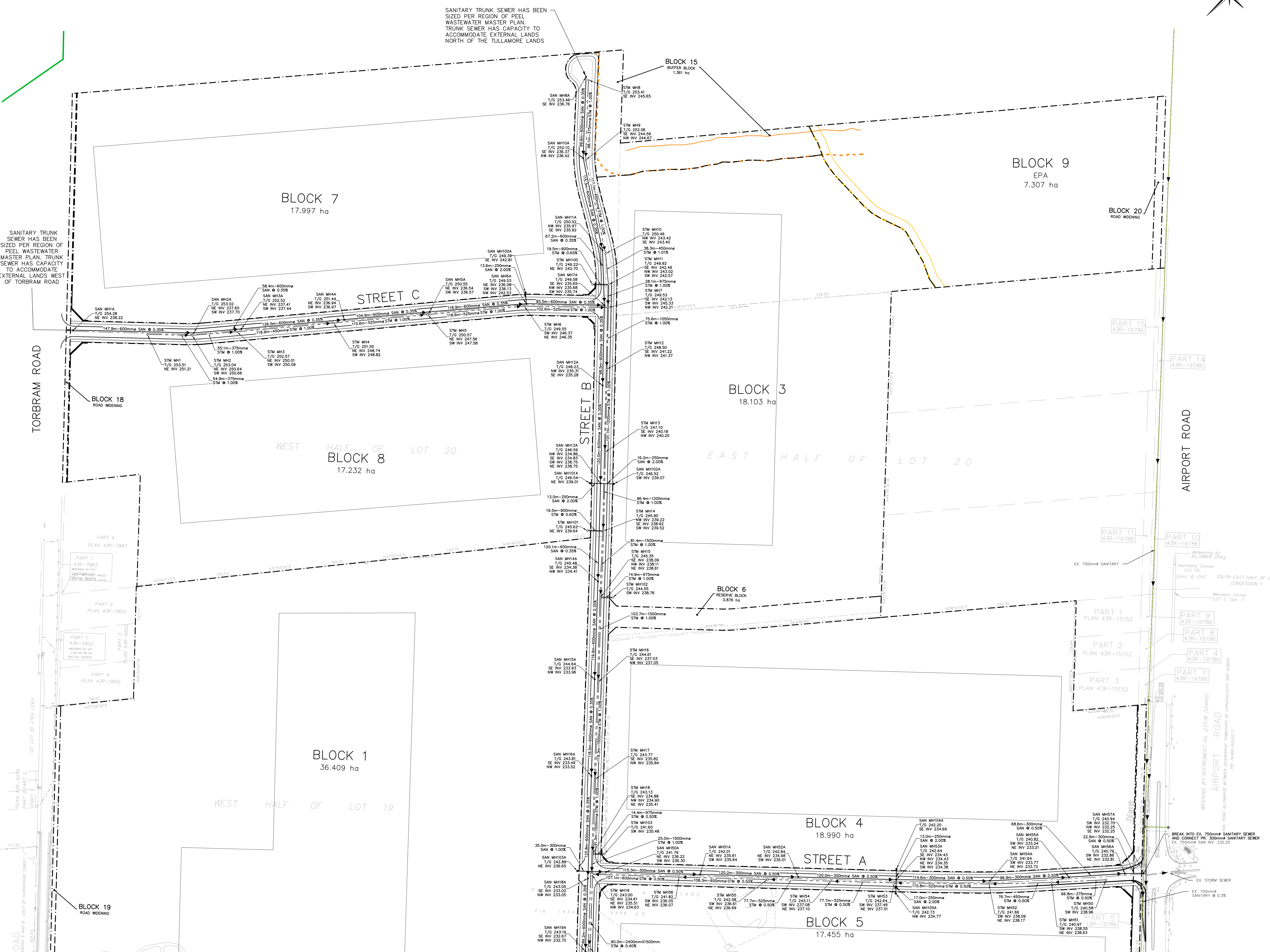


LEGEND	
	PROPERTY LINE
	GREENBELT BOUNDARY
	WOODLOT PER GEI
	WOODLOT PER + 30m PER GEI
	CREST OF SLOPE PER GEI
	CREST OF SLOPE + 10m PER GEI
	LONG TERM STABLE SLOPE+10m SETBACK PER GEI
	EXISTING SANITARY SEWER
	PROPOSED STORM SEWER & MANHOLE
	PROPOSED SANITARY SEWER & MANHOLE
	PROPOSED STORM SEWER (BY OTHERS)
	PROPOSED SANITARY SEWER (BY OTHERS)
	SANITARY EASEMENT

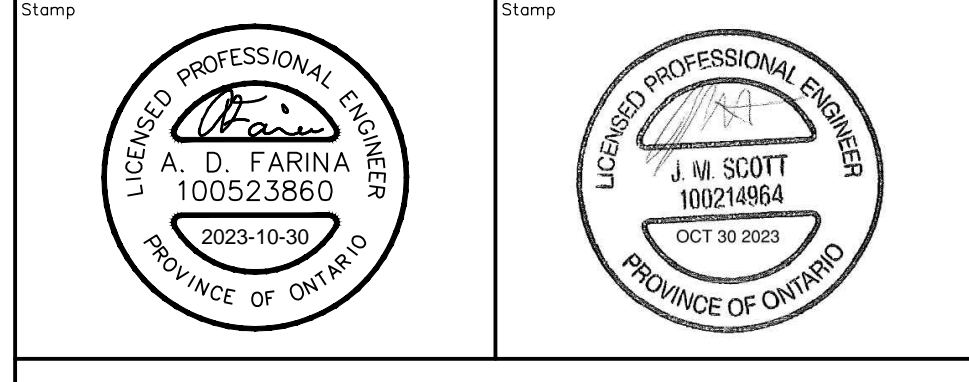


**TOWN OF CALEDON
PLANNING
RECEIVED**

October 31, 2023



No.	ISSUE / REVISION	DATE
2	RE-ISSUED FOR DPOS & OPA	2023/OCT/30
1	RE-ISSUED FOR DPOS & OPA	2023/APR/26
0	ISSUED FOR DPOS, OPA & ZBA	2021/JUN/29
0	ISSUE / REVISION	YYYY/MM/DD



BEARING NOTE:
BEARINGS ARE UTM GRID, DERIVED FROM GPS OBSERVATION USING THE "TOPNET" GPS NETWORK OBSERVATIONS, UTM ZONE 17, NAD83 (CSRS) (2011) & (1987).

ELEVATION NOTE:
ELEVATIONS HEREON ARE GEODETIC IN ORIGIN AND WERE DERIVED FROM GPS OBSERVATIONS USING THE "TOPNET" GPS NETWORK AND ARE REFERRED TO THE CGVD-1928, 1978 DATUM.

ELEVATION NOTE:
ELEVATIONS HEREON ARE GEODETIC IN ORIGIN AND WERE DERIVED FROM CITY OF BRANTFORD MONUMENT NO. 00220085 (AND ADJUSTMENT) HAVING A PUBLISHED ELEVATION OF 242.135m.

SITE BENCHMARK:
A NAIL HAVING ELEVATION 241.24m WAS SET 12.12m EAST OF THE SOUTHEAST CORNER OF THE PROPERTY ALONG AIRPORT ROAD.

DRAFT PLAN NOTES:
DESIGN ELEMENTS ARE BASED ON DRAFT PLAN BY WESTON CONSULTING INC. DRAWING NO. 03 FILE NO. 10208.

DRAWING NOTES:
THIS DRAWING IS THE EXCLUSIVE PROPERTY OF C.F. ORDER & ASSOCIATES INC. AND THE REPRODUCTION OF ANY PART OF IT WITHOUT PRIOR WRITTEN CONSENT OF THIS OFFICE IS STRICTLY PROHIBITED.

CONTRACTOR SHALL:
VERIFY ALL DIMENSIONS, LEVELS, AND DATUMS ON SITE AND REPORT ANY DISCREPANCIES OR OMISSIONS TO THIS OFFICE PRIOR TO CONSTRUCTION. THIS DRAWING IS TO BE READ AND UNDERSTOOD IN CONJUNCTION WITH ALL OTHER PLANS AND DOCUMENTS APPLICABLE TO THIS PROJECT. DO NOT SCALE THIS DRAWING. ALL EXISTING UNDERGROUND UTILITIES TO BE VERIFIED IN THE FIELD BY THE CONTRACTOR PRIOR TO CONSTRUCTION.

**TULLAMORE LANDS
TOWN OF CALEDON**

**PRELIMINARY STORM & SANITARY
SERVICING PLAN - NORTH**

**CROZIER
CONSULTING ENGINEERS**

2800 High Point Drive
Suite 100
Mississauga, ON L4Y 4P4
905.875.0226
www.crozier-engineers.com

Drawn: **V.M./L.E.** Design: **A.S./A.B.F.** Project No: **2022-5842**
Check: **D.L./J.S.** Date: **1-15-2024** File: **C101**