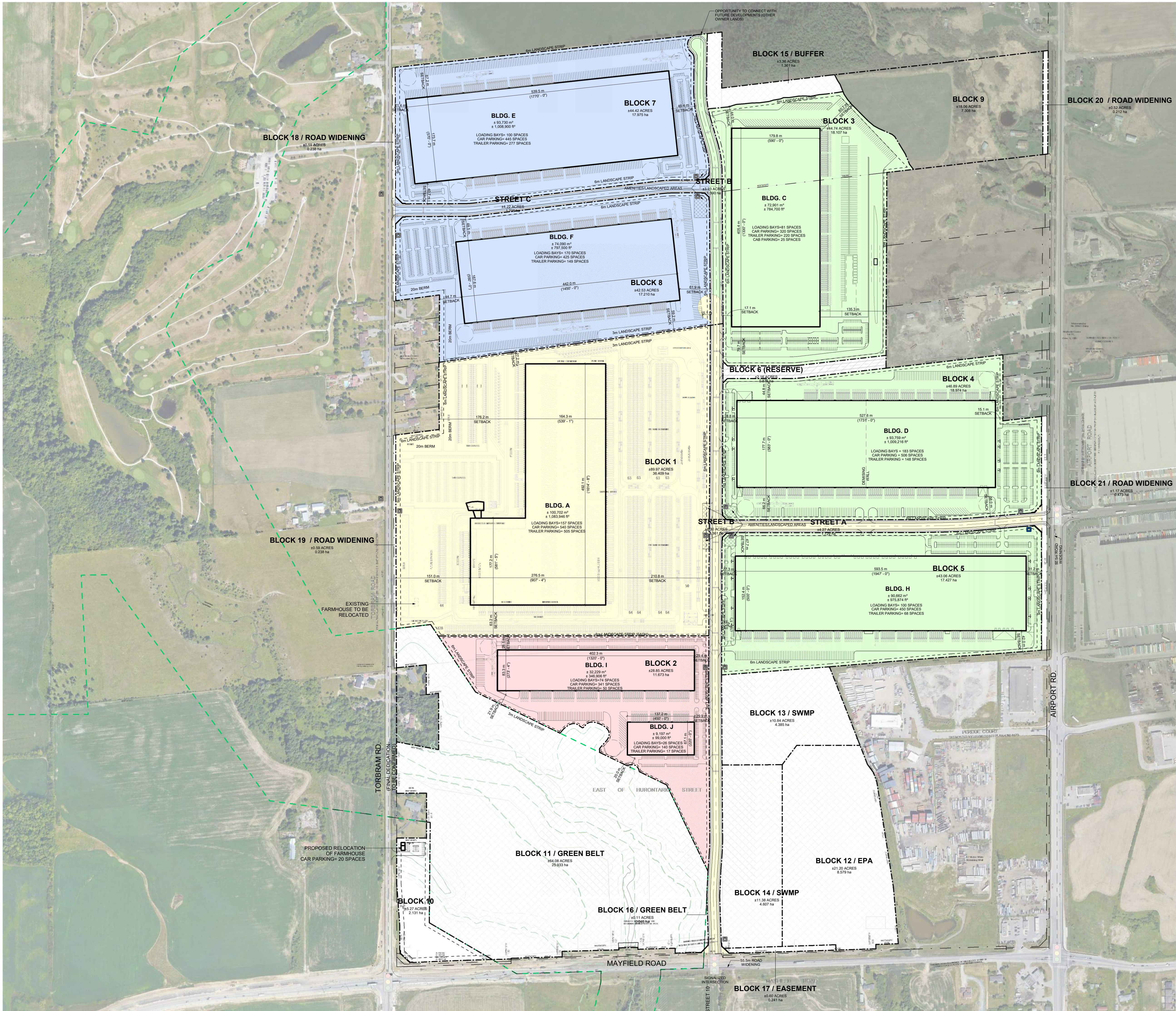


2023-10-26 2:20:46 PM



STAGING/SEQUENCING LEGEND

- PHASE 1
- PHASE 1 - TEMPORARY
- PHASE 2
- PHASE 3
- PHASE 4

# TURNER FLEISCHER

Turner Fleischer Architects Inc.  
67 Leslie Road  
Toronto, ON, M5B 2T8  
T 416 425 2222  
turnerfleischer.com

This drawing, as an instrument of service, is provided by and is the property of Turner Fleischer Architects Inc. The contractor must verify and accept responsibility for all dimensions and conditions on site and must notify Turner Fleischer Architects Inc. of any variations from the supplied information. This drawing is not to be scaled. The architect is not responsible for the accuracy of survey, structural, mechanical, electrical, etc. information shown on this drawing. Refer to the appropriate consultant's drawings before proceeding with the work. Contractor must conform to all applicable codes and requirements of authorities having jurisdiction. The contractor working from drawings not specifically marked "For Construction" must assume full responsibility and bear costs for any corrections or damages resulting from his work.

TOWN OF CALEDON  
PLANNING  
RECEIVED  
October 31, 2023

66	2023-10-26	ISSUED FOR COORDINATION (A1-113)	RLA
65	2023-10-24	ISSUED FOR COORDINATION (A1-112)	RLA
#	DATE	DESCRIPTION	BY



PROJECT  
TULLAMORE LANDS  
CALEDON, ON

DRAWING  
STAGING AND SEQUENCING PLAN

PROJECT NO. 20.302SD	DRAWING NO. A101
PROJECT DATE 2023-10-26	
DRAWN BY RLA	
CHECKED BY JJJ	
SCALE As indicated	