

TULLAMORE LANDS

Highway 404 and Green Lane E.

LANDSCAPE:
RONKOWSKI ARCHITECTURE
 368 Oxford Street East
 London, ON
 N5A 1Y7
 T: 514-499-3322
 F: 514-445-2474
 www.rka.ca

ARCHITECTURAL:
STENDEL + REICH architecture
 3435 Rue Stanley
 Montreal, QC
 H5A 1S2
 T: 514-499-9909
 F: 514-499-0111
 www.stendelreich.com

STRUCTURAL:
 402-1200 Vain Home
 Oshawa, ON
 M5V 4S2
 T: 514-274-4821

MECHANICAL:
 235 Lesmill Road
 North York, ON
 M2B 2V4
 T: 416-445-8255
 www.sncorvalin.com

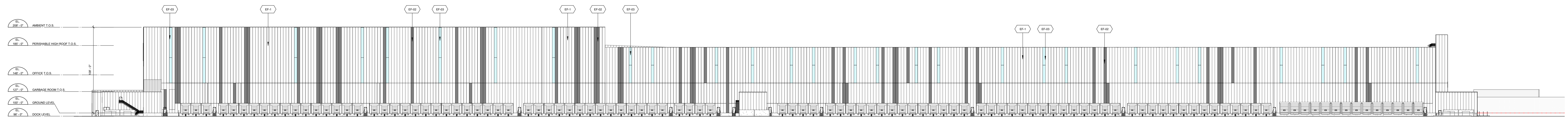
ELECTRICAL:
Hamptel
 43 Lesmill Road
 Toronto, ON
 M2B 2T8
 T: 416-444-9263
 www.hamptel.com

FIRE PROTECTION:
 3900, Côte-Vertu
 Saint-Laurent, QC
 H4R 1V4
 T: 514-337-2900
 F: 514-337-2910
 www.cnebc.com

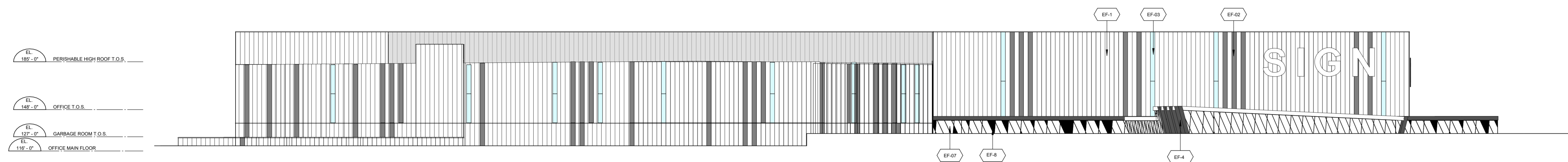
CIVIL:
OCARDTECH
 5230 South Service
 Road
 Burlington, ON
 L7R 6G2
 T: 905-632-3811
 F: 905-632-3903
 www.ocardtech.com

REVISIONS

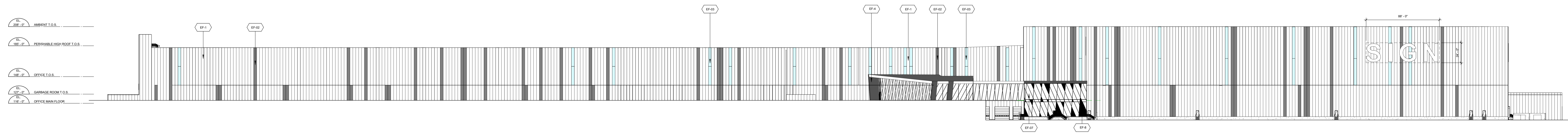
No	Date	Description	By



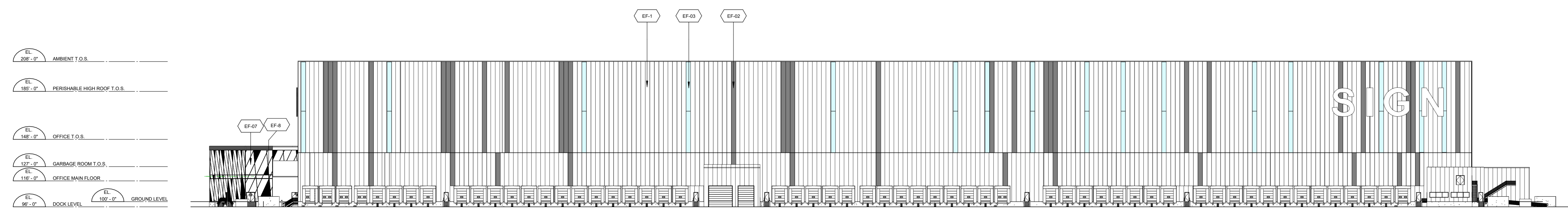
1 EAST ELEVATION
 1" = 48'-0"



2 NORTH ELEVATION
 1" = 48'-0"



3 WEST ELEVATION
 1" = 48'-0"



4 SOUTH ELEVATION
 1" = 48'-0"

**TOWN OF CALEDON
 PLANNING
 RECEIVED**
April 13, 2023

EXTERIOR FINISHES

- EF-01 PREFINISHED INSULATED METAL PANELS INSTALLED VERTICALLY. COLOR A (KINGSPAN L/G SR ASCOT WHITE 4318R62)
- EF-02 PREFINISHED INSULATED METAL PANELS INSTALLED VERTICALLY. COLOR B (KINGSPAN BRIGHT SILVER - 43RZ1827M WITH CLEARCOAT 43A307)
- EF-03 PREFINISHED UNGLAZED TRANSLUCENT WALL PANEL SYSTEM INSTALLED VERTICALLY. COLOR C (MATTE WHITE)
- EF-04 PREFINISHED ALUMINUM PANELS 3mm THICK WITH DISSIMULATED JOINTS. COLOR: BLACK ANODIZED
- EF-05 PREFINISHED PERFORATED ALUMINUM PANELS 3mm THICK WITH DISSIMULATED JOINTS. COLOR: NATURAL ANODIZED
- EF-06 CURTAIN WALL SYSTEM WITH 6mm CLEAR GLASS INTERIOR AND EXTERIOR, WITH ARGON, APPLY LOW E FILM ON 3RD FACE OF GLASS FOR ALL THE GLAZING. COLOR: NATURAL ANODIZED ALUMINUM MODEL: KAWNEER 1600 OR EQUIVALENT
- EF-07 CURTAIN WALL SYSTEM WITH DIAGONAL MULLIONS WITH 6mm FROSTED GLASS INTERIOR AND EXTERIOR WITH ARGON. APPLY LOW E FILM ON THE 3RD FACE OF GLASS FOR ALL OF THE GLAZING. COLOR: NATURAL ANODIZED ALUMINUM MODEL: KAWNEER 1600 OR EQUIVALENT
- EF-08 SPANDREL GLASS CURTAIN WALL SYSTEM WITH SEALED UNIT WITH CLEAR GLASS INTERIOR AND EXTERIOR WITH ARGON. APPLY FILM OPACICODAT 300 ON THE 4TH FACE OF THE GLASS. COLOR: NATURAL ANODIZED ALUMINUM MODEL: KAWNEER 1600 OR EQUIVALENT

*NOTE: ALL GLAZING TO RECEIVE TREATMENT TO MITIGATE BIRD COLLISIONS. PER CIBA 4460.

LEGEND

<p>COLOR A</p> <p>MANUFACTURER: Kingspan MODEL: KS Series COLOR: ASCOT WHITE SRI: 83</p>	<p>Ascot White (KAWNEER 1600)</p>
<p>COLOR B</p> <p>MANUFACTURER: Kingspan MODEL: KS Series COLOR: BRIGHT SILVER SRI: 65</p>	<p>Bright Silver (KAWNEER 1600)</p>
<p>COLOR C</p> <p>MANUFACTURER: Kingspan MODEL: KS Unigaze System COLOR: Matte White</p>	

No	Date	Description	By

GENERAL NOTE:
 THE CONTRACTOR IS RESPONSIBLE FOR VERIFYING DIMENSIONS, MEASUREMENTS, SETBACKS AND FOR THE CORRECTION AND ANY PRODUCT WITHIN OF ALL ELEMENTS. ALL FINISHES, MATERIALS AND METHODS MUST BE APPROVED BY THE ARCHITECT IMMEDIATELY.

DRAWN BY: **DM** SEAL
 VERIFIED BY: **JM**
 APPROVED BY: **CS**

DRAWING TITLE:
EXTERIOR ELEVATIONS - SPA

SCALE: **AS PER DRAWING** DATE: **2022.01.24**

PROJECT NUMBER: **21084** DRAWING #: **A-201** REV: