



TOWN OF CALEDON
PLANNING
RECEIVED

April 13, 2023

**Arborist Report and Tree Preservation Plan
Tullamore Employment Lands**

Town of Caledon, Ontario

Submitted to:

Tullamore Industrial LP
75 Tiverton Court
Markham, ON
L3R 4M

Submitted by:

GEI Consultants Ltd.
100-75 Tiverton Court
Markham, ON
L3R 4M8
519-342-3488

February 2022, Updated April 2023
Project # 2100975

Table of Contents

1.	Introduction	1
2.	Methodology	2
3.	Tree Inventory	3
	3.1 Preservation Trees	3
	3.2 Removal Trees	3
4.	Tree Protection Program	4
5.	Compensation Requirements	5
6.	Summary	6

Appendices

- A. Figures
- B. Tables

AUTHOR INITIALS:SB

Document1



1. Introduction

GEI Consultants Ltd. (GEI) was retained by Tullamore Industrial LP to prepare an Arborist Report and Tree Preservation Plan (TPP) for the Tullamore Employment Lands in the Town of Caledon, Ontario (herein referred to as the Subject Lands; **Figure 1, Appendix A**). The Subject Lands are generally located north of Mayfield Road, west of Airport Road, east of Torbram Road and south of Old School Road. The Subject Lands consist primarily of actively managed agricultural fields, with two tributaries of the West Humber River flowing through the site, and Salt Creek traversing the northeast corner of the Subject Lands. The tributary closest to Torbram Road is located within the Greenbelt Planning Area and is designated as part of the Natural Heritage System (NHS) under the *Greenbelt Plan (2017)*.

The proposed commercial and industrial development for the Subject Lands is preliminary (**Figure 1, Appendix A**), and the Draft Plan does not show specific locations of buildings, internal roadways or parking lots. A primary road network running north to south and east to west through the site is shown, along with stormwater management areas (SWMP) and designated Environmental Protection zones, plus the Greenbelt Planning Areas. Preliminary site statistics are summarized below:

- Blocks 1 to 8 to be developed with a total area of 144.996 ha;
- SWMPs with an area of 9.406 ha;
- Greenbelt Plan Area and Environmental Protection Areas with an area of 30.174 ha; and
- Total site area of 202.9 ha.

GEI completed a tree inventory on the Subject Lands in June 2021. Additional lands were purchased by the owner in 2022 and will be part of the second phase of the development. These areas are shown on **Figure 1, Appendix A**. This report presents the results of the tree inventory, excluding the additional lands that will be inventoried at Site Plan, identifies opportunities for tree preservation and protection, recommends measures to protect retainable trees, and proposes compensation for tree removals. The objective of the Tree Preservation Plan is to retain existing tree cover wherever feasible and to minimize the risk of injury to trees identified for protection. The preparation of this report was guided by the Town of Caledon *Terms of Reference for Arborist Reports, Tree Preservation Plans and Tableland Tree Removal Compensation (2020)*.



2. Methodology

GEI completed a tree inventory within the Subject Lands on June 23–25 and June 27, 2021. All live trees with a diameter-at-breast-height (DBH) of 10 cm and greater were tagged and assessed. Trees in hedgerows were tallied. The locations for all inventoried trees were recorded in UTM coordinates using a sub-meter capable GPS unit or a handheld GPS unit, and the following information was noted: species, DBH, health category (biological, structural, and overall), crown radius, and notes regarding the assigned health category.

Tree health was categorized as good, fair, or poor. Trees categorized as “good” overall had at least 80% live canopy and showed no significant structural defects (e.g., weak limbs, girdling roots, stem lean) or evidence of biological damage (e.g., insect damage, fungal growth, leaf dieback). “Fair” trees were those with 50% to 80% live canopy and showed no significant structural or biological defects, or the tree had over 80% live canopy but did show some evidence of structural defects and/or biological damage. Trees categorized as “poor” were those with less than 50% live canopy and/or had significant structural defects and/or biological damage.



3. Tree Inventory

A total of 553 individual trees were mapped and assessed during this tree inventory and 76 trees in six hedgerows were tallied (**Figure 2, Appendix A**). **Table 1 (Appendix B)** outlines the results of the tree inventory, including the tree identification number, species, DBH, crown radius, health category (biological, structural, and overall), notes regarding the assigned health category, recommendations for preservation or removal, and number of compensation trees required for removals. **Table 2 (Appendix B)** outlines the results of the hedgerow tally, including the hedgerow identification number, species, DBH range, overall health category, recommendations for preservation or removal, and number of compensation trees required for removals.

The inventoried trees included 25 different species, including two hybrids. Of the 629 inventoried trees (including hedgerow trees), 124 (20%) are native to the Greater Toronto Area (TRCA 2017). Following analysis of anticipated impacts to the inventoried trees, it was determined that 5 individual trees and 15 trees in two hedgerows are recommended for preservation (for a total of 20 preservation trees). The remaining 548 individual trees and 61 trees in four hedgerows are recommended for removal (for a total of 609 removal trees) due to anticipated construction impacts. Further detail is provided in the following subsections.

3.1 Preservation Trees

Preservation trees are those that are located outside of the proposed construction footprint and are unlikely to be impacted by the proposed construction or can likely be preserved using tree protection measures, as described in **Section 4**. Of the 629 inventoried trees, 20 are preservation trees.

3.2 Removal Trees

Removal trees are those that are located within or in proximity to the proposed construction footprint and cannot be adequately protected. Of the 629 inventoried trees, 609 are removal trees. Compensation for removal trees is discussed in **Section 5**.

The proponent should ensure that the works are in conformance with the *Migratory Birds Convention Act, 1994* and the *Endangered Species Act, 2007*. Specifically, tree removals should comply with timing window restrictions with regards to the protection of nesting birds and species at risk bats. Where these timing windows cannot be avoided, it is recommended that a qualified ecologist conduct a nest search and bat habitat assessment prior to tree removals.



4. Tree Protection Program

GEI inventoried 629 trees within the Subject Lands. Of these, 20 are preservation trees. Preservation trees are separated from the proposed development by the Greenbelt Planning Area, and therefore do not require any additional tree protection measures.



5. Compensation Requirements

The Town of Caledon requires compensation for the removal of healthy trees 10 cm DBH and greater within tableland areas. **Table 3** below provides the ratio of tree replacements required for tree removals according to size, based on the Town of Caledon Terms of Reference for Arborist Reports, Tree Preservation Plans and Tableland Tree Removal Compensation (2020). Healthy trees were defined as those trees which were not assessed to be in poor condition for any of the biological, structural, and overall health categories.

Table 3 – Ratio of Tree Replacement for Private Trees

DBH of Tree to be Cut or Removed	Number of Replacement Trees Required	Number of Tree Removals	Number of Removal Trees Requiring Compensation	Number of Proposed Replacement Trees
10 – 20 cm	1	234	226	226
21 – 35 cm	2	177	166	332
36 – 50 cm	3	83	74	222
51 – 65 cm	4	23	17	68
> 65 cm	5	31	14	70
10 – 20 cm	1	234	226	226

Accordingly, a total of 918 trees are proposed to be planted as compensation for those removed through the construction of the proposed development.

Should it be determined that the compensation plantings will occur on site, a Landscape Plan showing compensation planting will be prepared by a Landscape Architect registered as a full member in good standing with the Ontario Association of Landscape Architects and submitted to the Town of Caledon. Compensation trees shall be native species to the TRCA watershed (TRCA 2017). If compensation plantings are unable to meet the required tree compensation numbers within the Subject Lands, compensation through cash-in-lieu may be considered at a rate as determined by the Town of Caledon.



6. Summary

GEI inventoried 629 trees within the Subject Lands, including 553 individual trees and 76 trees in six hedgerows. Through the preparation of this Arborist Report, it was determined that 5 individual trees and 15 trees in two hedgerows are recommended for preservation (for a total of 20 preservation trees). The remaining 548 individual trees and 61 trees in four hedgerows are recommended for removal (for a total of 609 removal trees) due to anticipated construction impacts. A total of 918 trees are proposed to be planted as compensation for those removed through the construction of the proposed development. Alternatively, compensation through cash-in-lieu may be considered at a rate as determined by the Town of Caledon.

Prepared By:

GEI Consultants



Agneta Szabo
Botanist
647-242-6492
aszabo@geiconsultants.com

Reviewed By:



Sara Ross, ISA ON-2084A
Environmental Specialist
416-294-6645
sross@geiconsultants.com

c. Shelley Lohnes, Project Manager



REFERENCES AND BACKGROUND MATERIALS

Town of Caledon 2020. Terms of Reference for Arborist Reports, Tree Preservation Plans and Tableland Tree Removal Compensation, Version 1.0. Caledon, Town of Caledon ON: City of Oshawa. 7 pp.

TRCA 2017. Appendix 2: Flora Species for Entire TRCA Jurisdiction (2017). Toronto, ON: Toronto and Region Conservation Authority.



Appendix A

Figures

- Figure 1: Proposed Development
- Figure 2: Tree Inventory



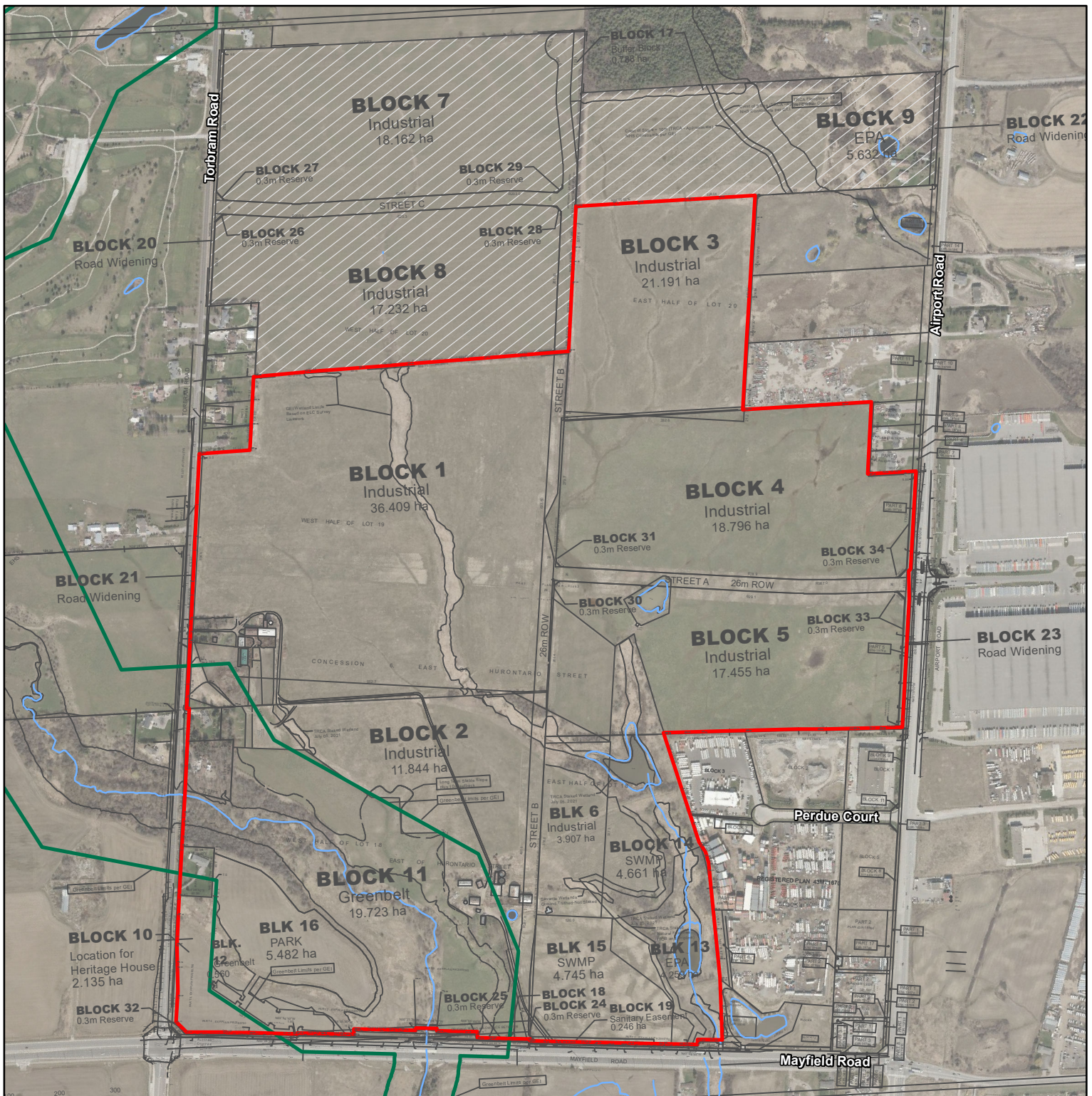
Appendix B

Tables

Table 1: Tree Inventory

Table 2: Hedgerow Inventory





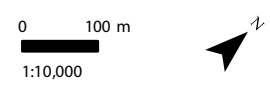
NOTES:

1. Coordinate System: NAD 1983 UTM Zone 17N.
2. Base features produced under license with the Ontario Ministry of Natural Resources and Forestry © Queen's Printer for Ontario, 2023; Toronto Region Conservation Authority, 2023.
3. Orthoimagery © First Base Solutions, 2023. Imagery taken in 2022.
4. Site plan from 10208 Draft Plan D5_2023-03-28.dwg

- Legend**
- Subject Lands (approximate)
 - Phase 2 Lands
 - Greenbelt Planning Area
 - Watercourse (TRCA)
 - Waterbody (LIO)

Project 2100975
Arborist Report and Tree Preservation Plan
Tullamore Industrial LP

Figure 01
Proposed Development






Project 2100975

NOTES:
 1. Coordinate System: NAD 1983 UTM Zone 17N.
 2. Base features produced under license with the Ontario Ministry of Natural Resources and Forestry © Queen's Printer for Ontario, 2023; Toronto Region Conservation Authority, 2023.
 3. Orthoimagery © First Base Solutions, 2023. Imagery taken in 2022.
 4. Site plan from 10208 Draft Plan D5_2023-03-28.dwg

Legend

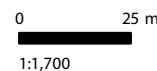
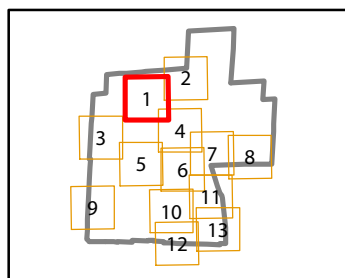
 Subject Lands (approximate)

Tree Inventory

 Removal

Arborist Report and Tree Preservation Plan
 Tullamore Industrial LP

Figure 2.1
 Proposed Development





EAST

STREET B

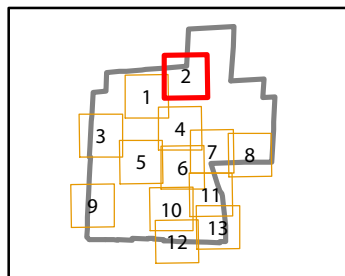
NOTES:
 1. Coordinate System: NAD 1983 UTM Zone 17N.
 2. Base features produced under license with the Ontario Ministry of Natural Resources and Forestry © Queen's Printer for Ontario, 2023; Toronto Region Conservation Authority, 2023.
 3. Orthoimagery © First Base Solutions, 2023. Imagery taken in 2022.
 4. Site plan from 10208 Draft Plan D5_2023-03-28.dwg

Legend

Subject Lands (approximate)

Tree Inventory

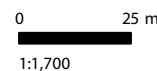
Removal

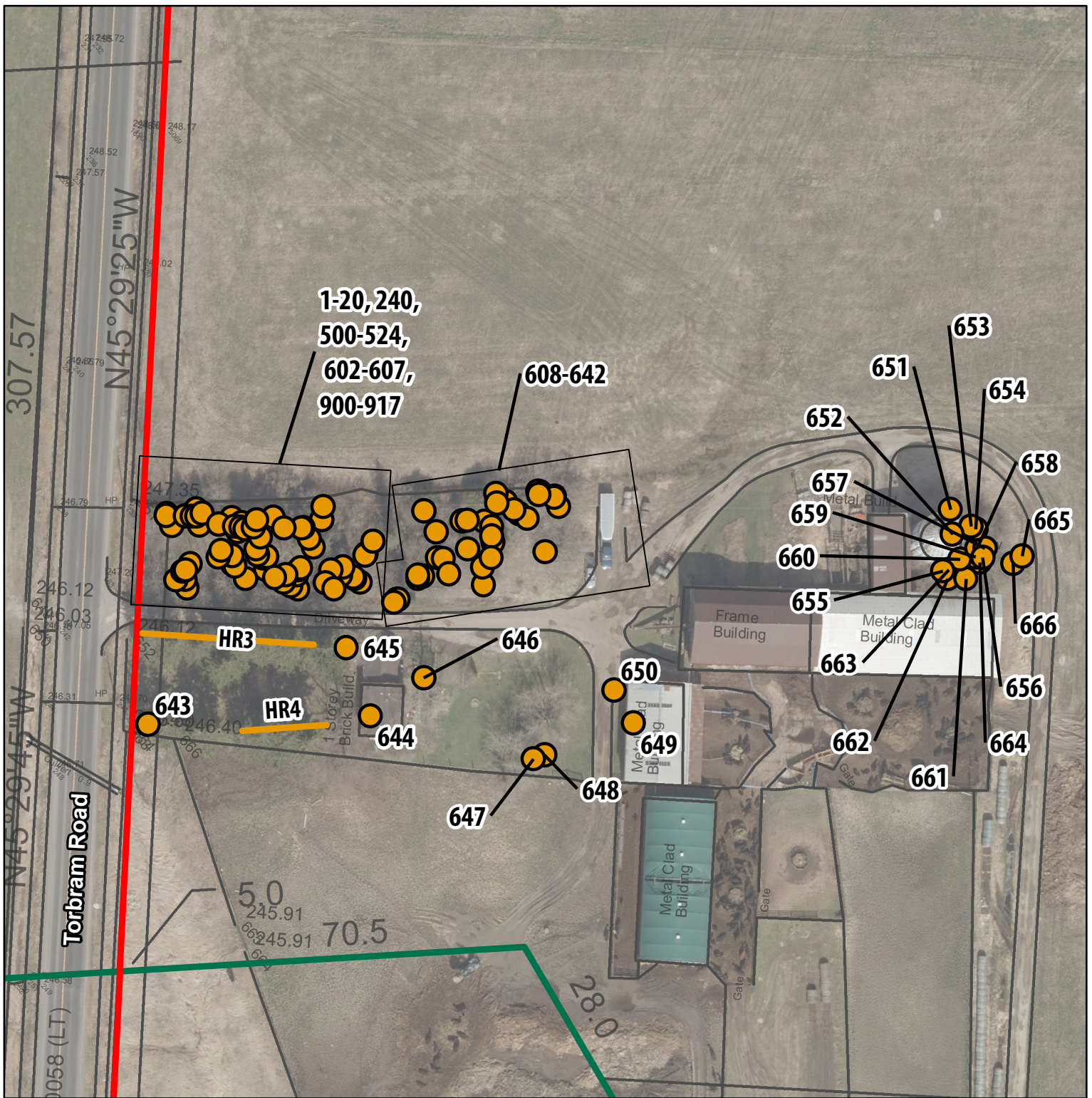


Arborist Report and Tree Preservation Plan
 Tullamore Industrial LP

Project 2100975

Figure 2.2
 Proposed Development



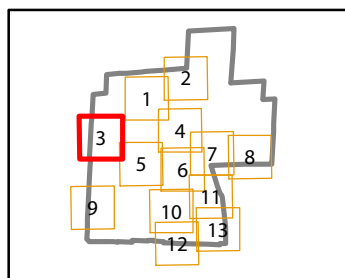


Project 2100975

- NOTES:**
1. Coordinate System: NAD 1983 UTM Zone 17N.
 2. Base features produced under license with the Ontario Ministry of Natural Resources and Forestry © Queen's Printer for Ontario, 2023; Toronto Region Conservation Authority, 2023.
 3. Orthoimagery © First Base Solutions, 2023. Imagery taken in 2022.
 4. Site plan from 10208 Draft Plan D5_2023-03-28.dwg

Legend

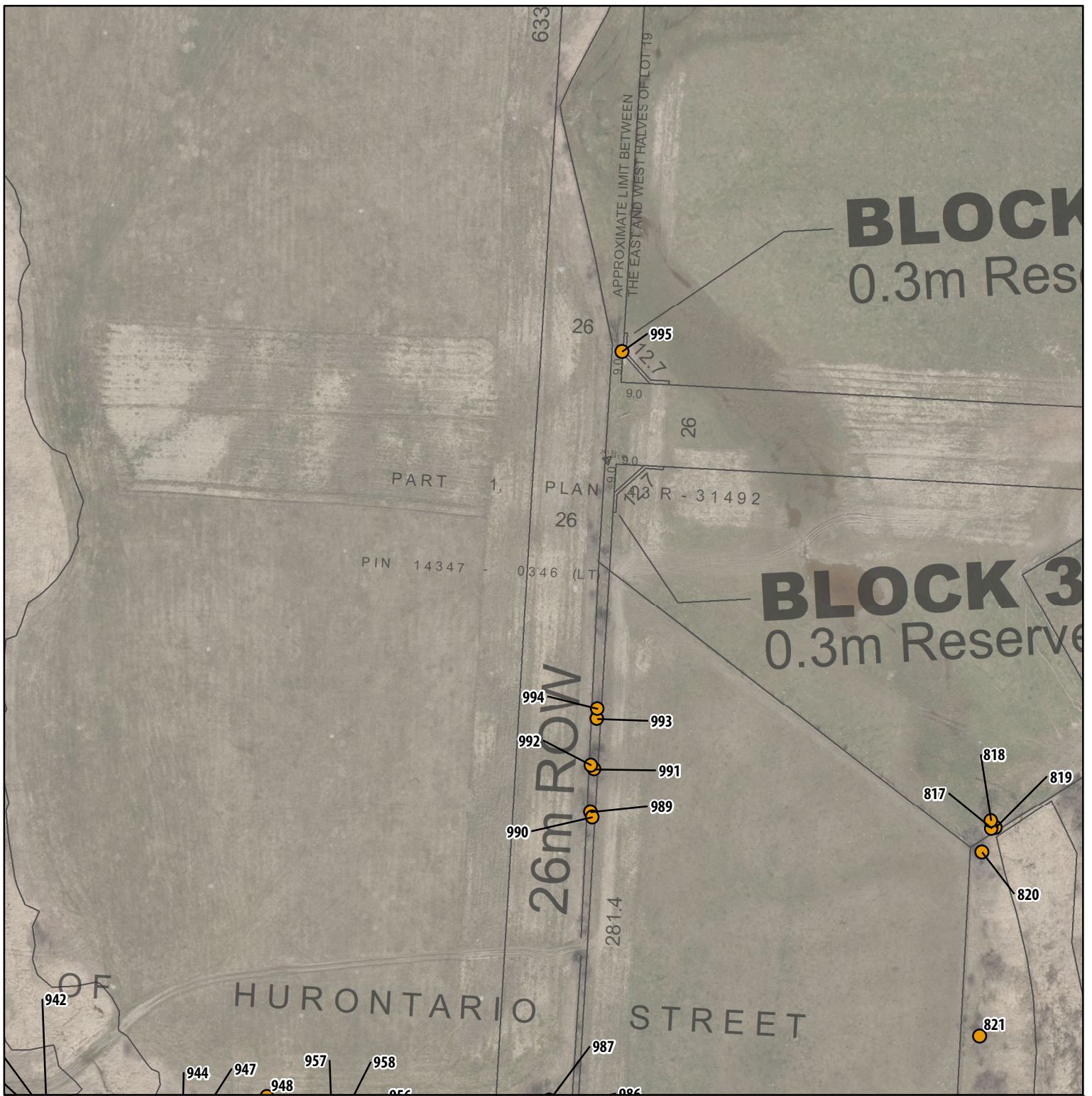
- Subject Lands (approximate)
- Greenbelt Planning Area
- Tree Inventory**
- Removal
- Hedgerow Inventory**
- Removal



Arborist Report and Tree Preservation Plan
Tullamore Industrial LP

Figure 2.3
Proposed Development

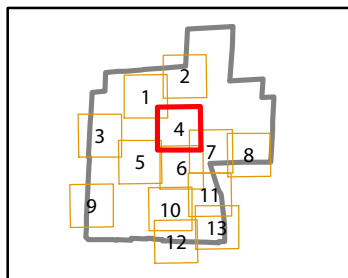




Project 2100975

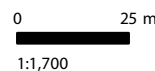
- NOTES:**
1. Coordinate System: NAD 1983 UTM Zone 17N.
 2. Base features produced under license with the Ontario Ministry of Natural Resources and Forestry © Queen's Printer for Ontario, 2023; Toronto Region Conservation Authority, 2023.
 3. Orthoimagery © First Base Solutions, 2023. Imagery taken in 2022.
 4. Site plan from 10208 Draft Plan D5_2023-03-28.dwg

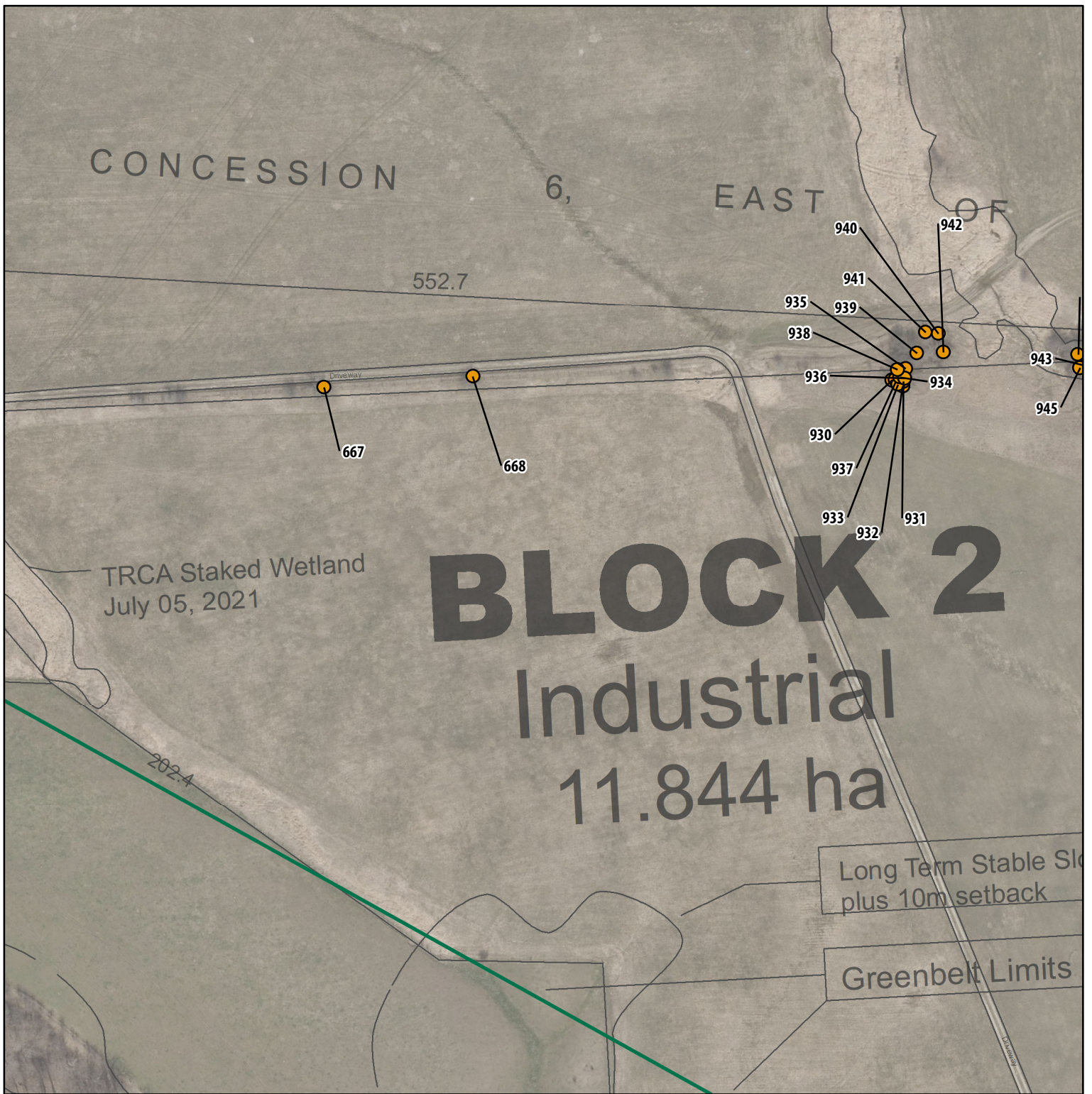
- Legend**
- Subject Lands (approximate)
 - Tree Inventory**
 - Removal



Arborist Report and Tree Preservation Plan
Tullamore Industrial LP

Figure 2.4
Proposed Development



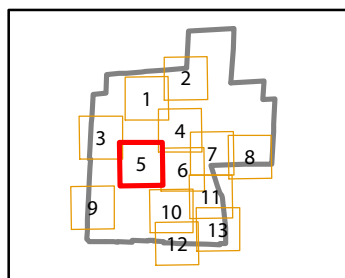


Project 2100975

- NOTES:**
1. Coordinate System: NAD 1983 UTM Zone 17N.
 2. Base features produced under license with the Ontario Ministry of Natural Resources and Forestry © Queen's Printer for Ontario, 2023; Toronto Region Conservation Authority, 2023.
 3. Orthoimagery © First Base Solutions, 2023. Imagery taken in 2022.
 4. Site plan from 10208 Draft Plan D5_2023-03-28.dwg

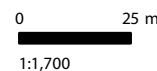
Legend

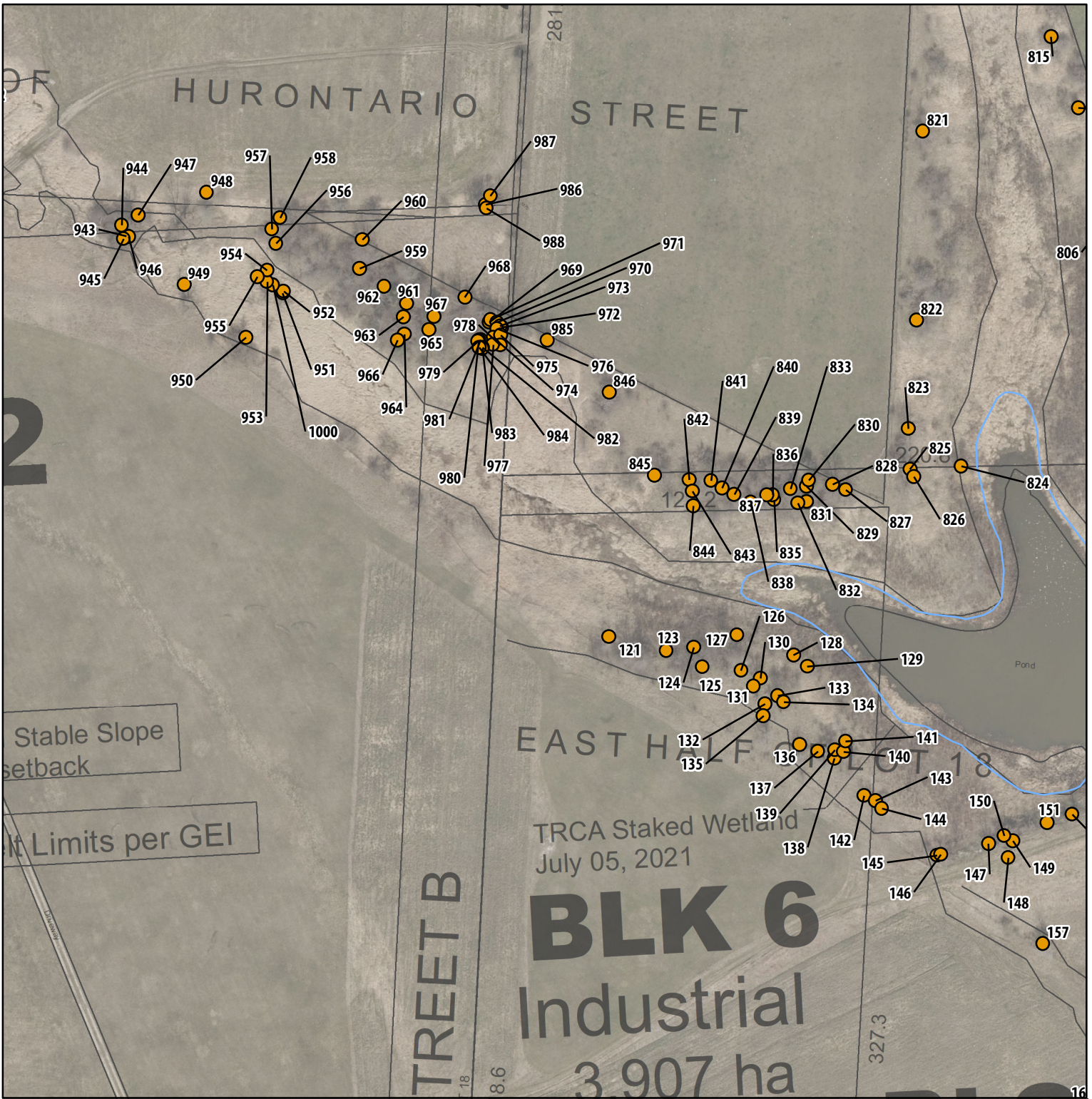
- Subject Lands (approximate)
 - Greenbelt Planning Area
- Tree Inventory**
- Removal



Arborist Report and Tree Preservation Plan
Tullamore Industrial LP

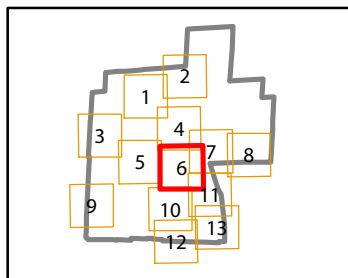
Figure 2.5
Proposed Development





- NOTES:**
1. Coordinate System: NAD 1983 UTM Zone 17N.
 2. Base features produced under license with the Ontario Ministry of Natural Resources and Forestry © Queen's Printer for Ontario, 2023; Toronto Region Conservation Authority, 2023.
 3. Orthoimagery © First Base Solutions, 2023. Imagery taken in 2022.
 4. Site plan from 10208 Draft Plan D5_2023-03-28.dwg

- Legend**
- Subject Lands (approximate)
 - Waterbody (LIO)
- Tree Inventory**
- Removal



Arborist Report and Tree Preservation Plan
Tullamore Industrial LP

Figure 2.6
Proposed Development

0 25 m
1:1,700



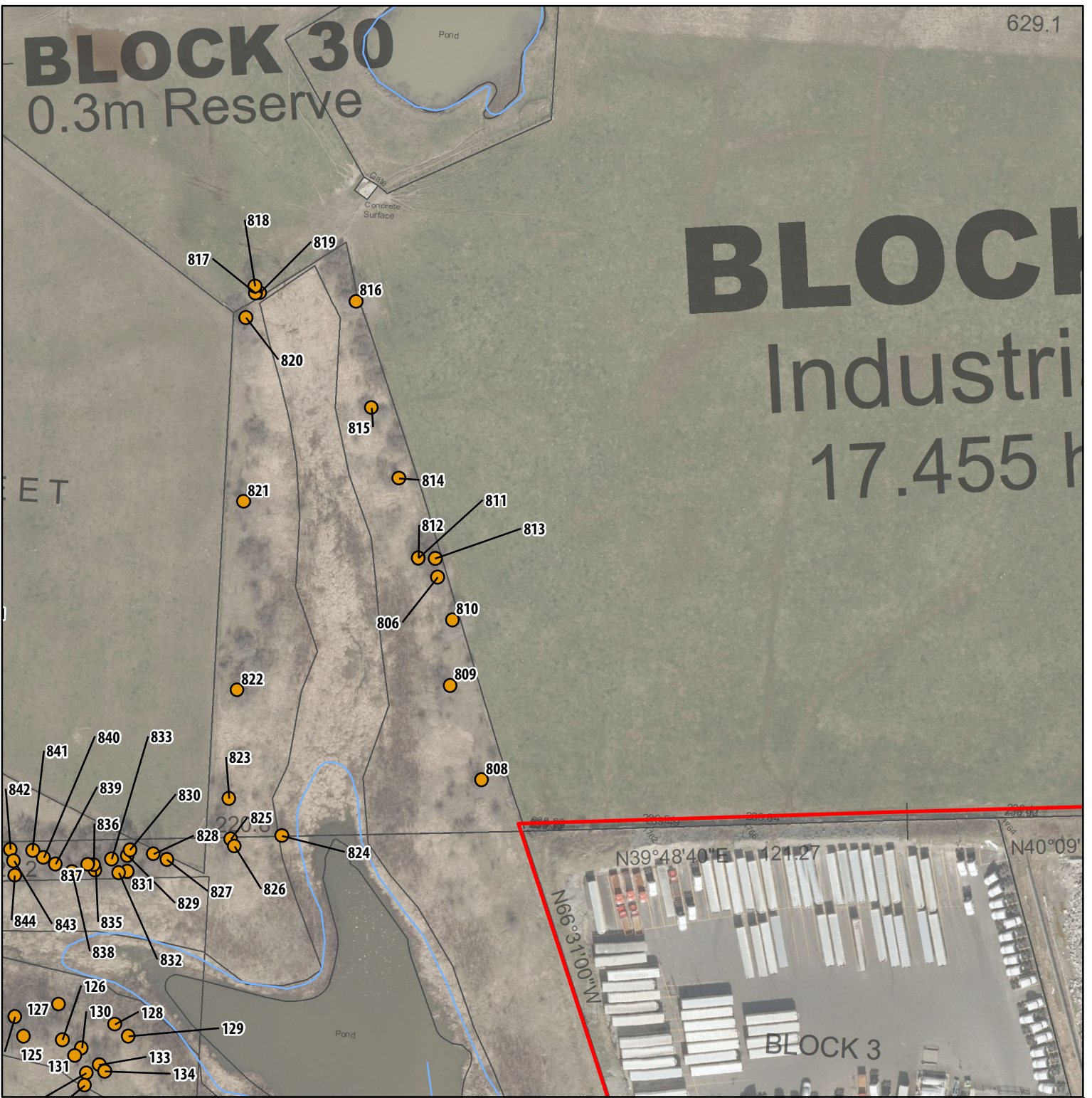
Project 2100975

BLOCK 30

0.3m Reserve

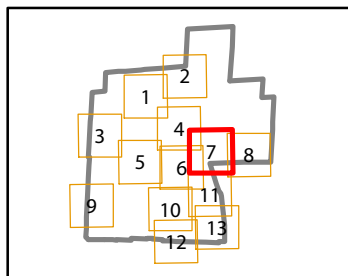
BLOCK 1

Industrial
17.455 h



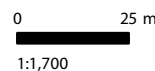
- NOTES:**
1. Coordinate System: NAD 1983 UTM Zone 17N.
 2. Base features produced under license with the Ontario Ministry of Natural Resources and Forestry © Queen's Printer for Ontario, 2023; Toronto Region Conservation Authority, 2023.
 3. Orthoimagery © First Base Solutions, 2023. Imagery taken in 2022.
 4. Site plan from 10208 Draft Plan D5_2023-03-28.dwg

- Legend**
- Subject Lands (approximate)
 - Watercourse (TRCA)
 - Waterbody (LIO)
- Tree Inventory**
- Removal



Arborist Report and Tree Preservation Plan
Tullamore Industrial LP

Figure 2.7
Proposed Development



Block 5
Industrial
.455 ha

Block 33
0.3m Reserve

PART 5
43R-19786

241.4

Northerly Corner
Lot 18, Con. 6, EHS

807

N40°09'20"E 128.53

51.72
N41°07'00"E

N40°21'10"E 143.25

BLOCK 2

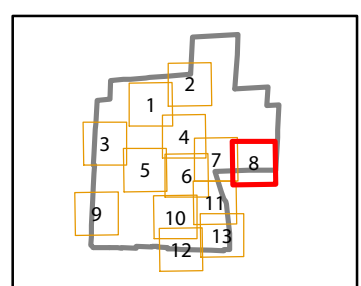
BLOCK 9
0.30 RESERVE

BLOCK 1

Airport Road

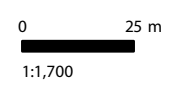
- NOTES:**
1. Coordinate System: NAD 1983 UTM Zone 17N.
 2. Base features produced under license with the Ontario Ministry of Natural Resources and Forestry © Queen's Printer for Ontario, 2023; Toronto Region Conservation Authority, 2023.
 3. Orthoimagery © First Base Solutions, 2023. Imagery taken in 2022.
 4. Site plan from 10208 Draft Plan D5_2023-03-28.dwg

- Legend**
- Subject Lands (approximate)
 - Tree Inventory**
 - Removal

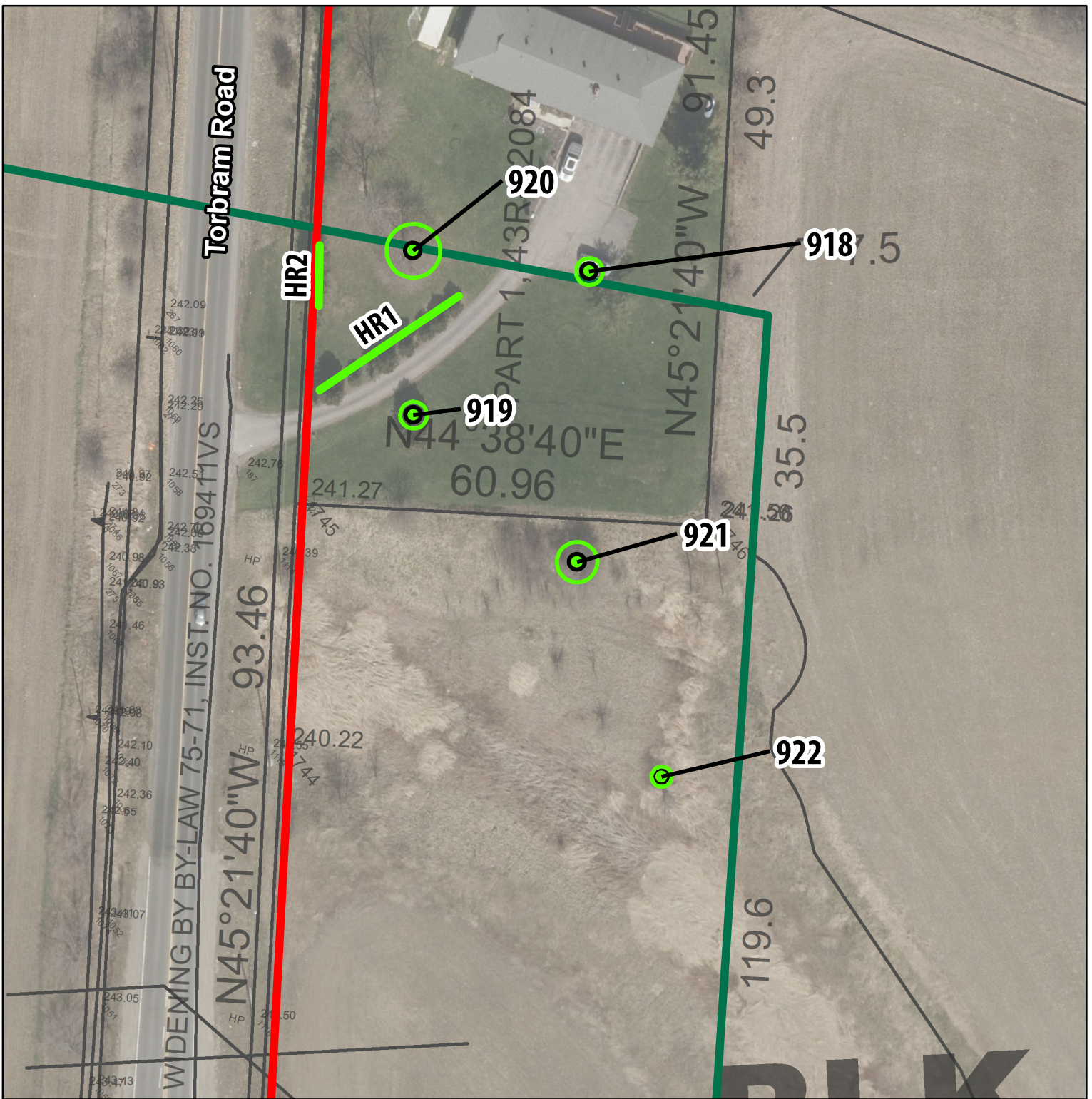


Arborist Report and Tree Preservation Plan
Tullamore Industrial LP

Figure 2.8
Proposed Development



Project 2100975

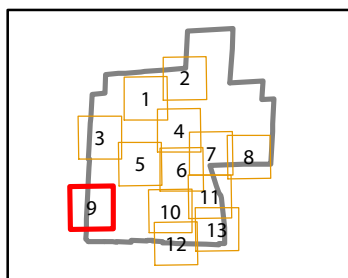


Project 2100975

- NOTES:**
1. Coordinate System: NAD 1983 UTM Zone 17N.
 2. Base features produced under license with the Ontario Ministry of Natural Resources and Forestry © Queen's Printer for Ontario, 2023; Toronto Region Conservation Authority, 2023.
 3. Orthoimagery © First Base Solutions, 2023. Imagery taken in 2022.
 4. Site plan from 10208 Draft Plan D5_2023-03-28.dwg

Legend

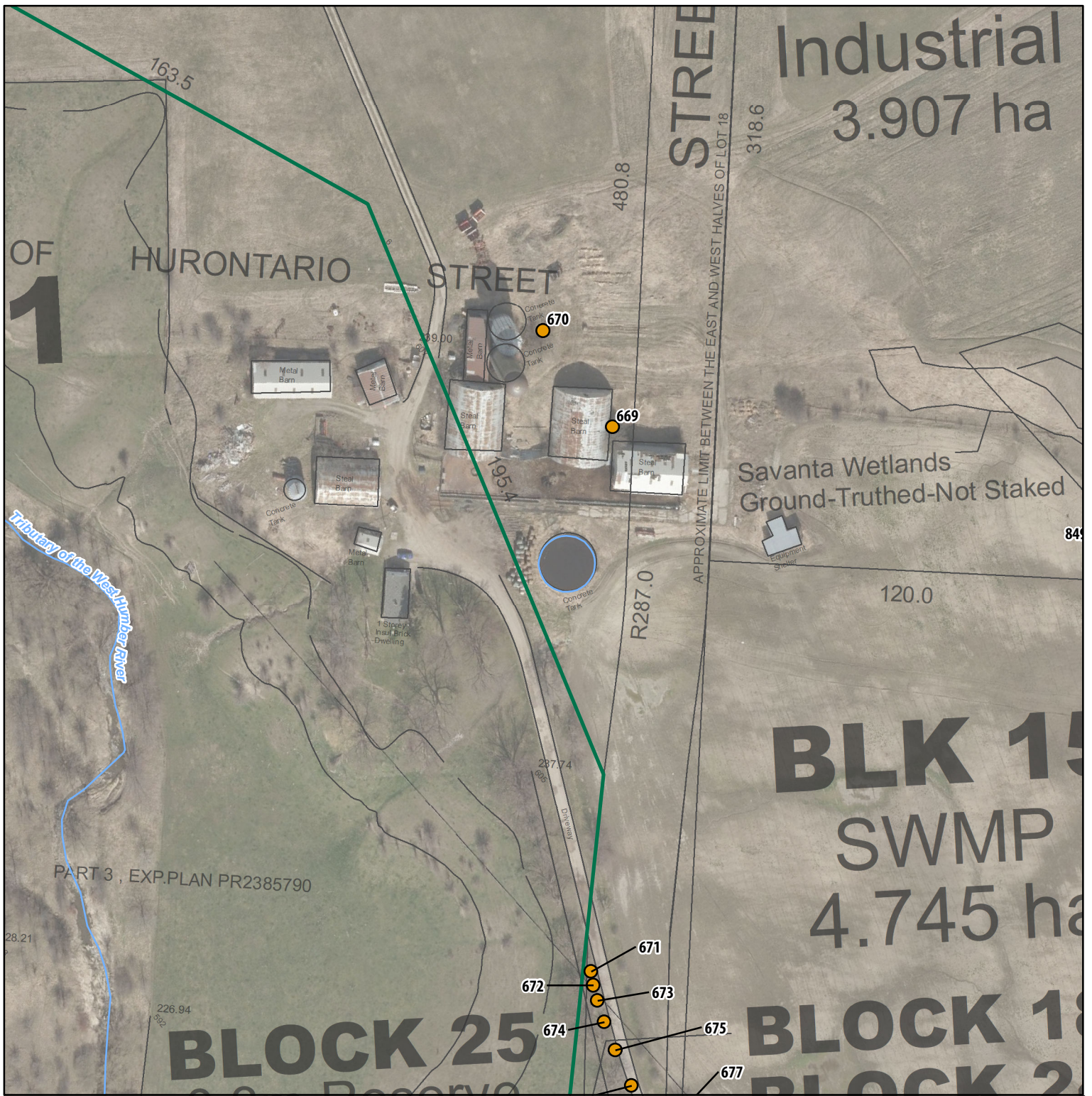
- Subject Lands (approximate)
- Greenbelt Planning Area
- Tree Protection Zone
- Tree Inventory**
- Preservation
- Hedgerow Inventory**
- Preservation



Arborist Report and Tree Preservation Plan
Tullamore Industrial LP

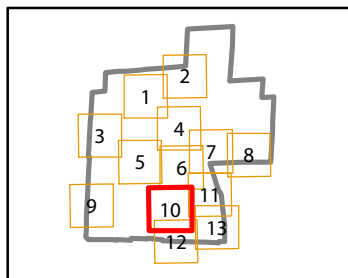
Figure 2.9
Proposed Development





NOTES:
 1. Coordinate System: NAD 1983 UTM Zone 17N.
 2. Base features produced under license with the Ontario Ministry of Natural Resources and Forestry © Queen's Printer for Ontario, 2023; Toronto Region Conservation Authority, 2023.
 3. Orthoimagery © First Base Solutions, 2023. Imagery taken in 2022.
 4. Site plan from 10208 Draft Plan D5_2023-03-28.dwg

- Legend**
- Subject Lands (approximate)
 - Greenbelt Planning Area
 - Watercourse (TRCA)
 - Waterbody (LIO)
- Tree Inventory**
- Removal



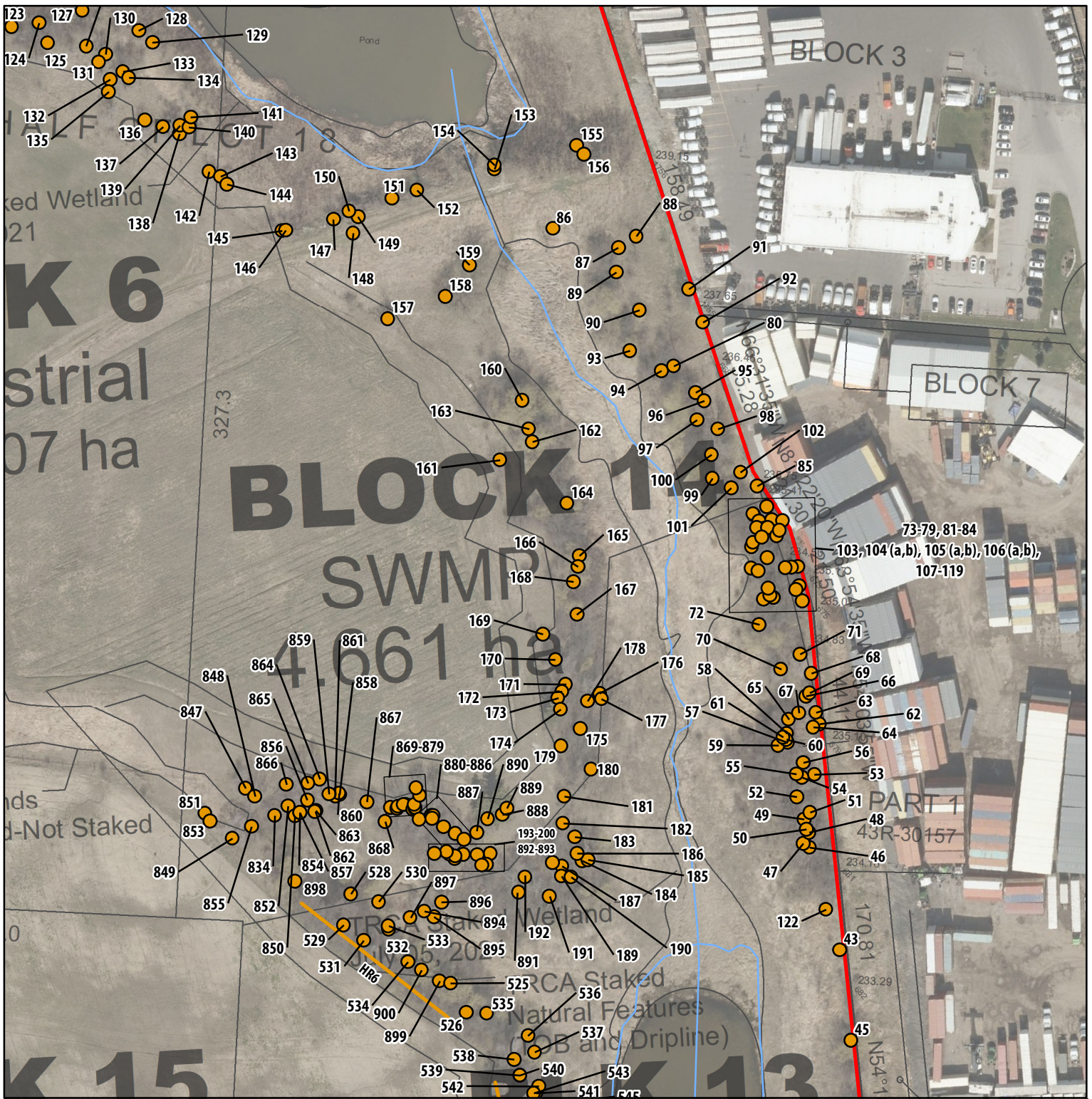
Arborist Report and Tree Preservation Plan
 Tullamore Industrial LP

Figure 2.10
 Proposed Development

0 25 m
 1:1,700



Project 2100975

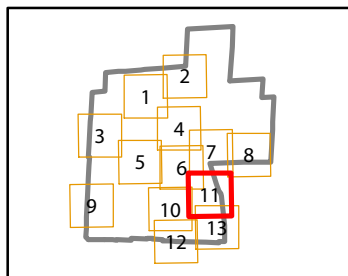


Project 2100975

- NOTES:**
1. Coordinate System: NAD 1983 UTM Zone 17N.
 2. Base features produced under license with the Ontario Ministry of Natural Resources and Forestry © Queen's Printer for Ontario, 2023; Toronto Region Conservation Authority, 2023.
 3. Orthoimagery © First Base Solutions, 2023. Imagery taken in 2022.
 4. Site plan from 10208 Draft Plan D5_2023-03-28.dwg

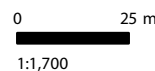
Legend

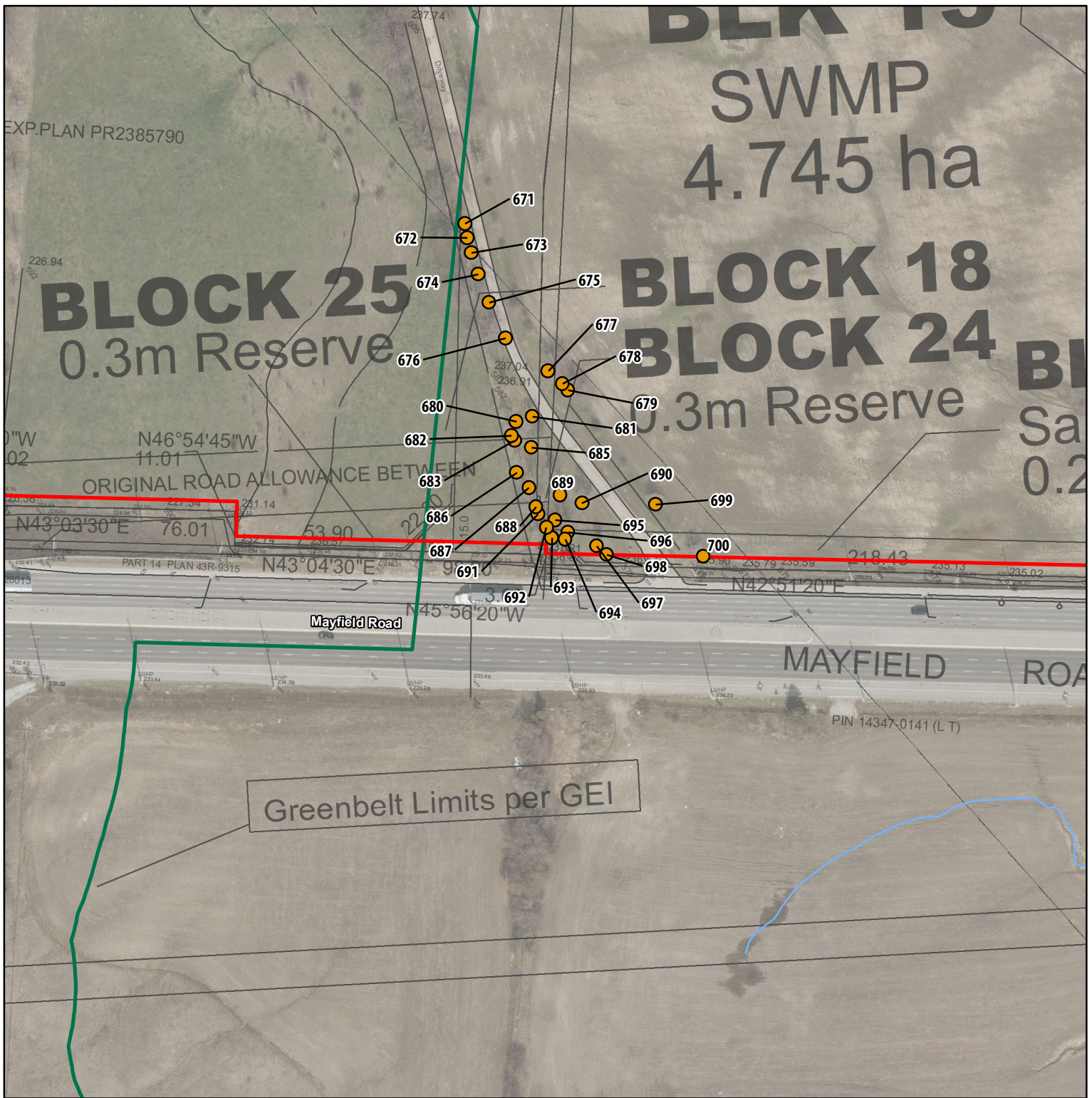
- Subject Lands (approximate)
- Watercourse (TRCA)
- Waterbody (LIO)
- Tree Inventory**
- Removal
- Hedgerow Inventory**
- Removal



Arborist Report and Tree Preservation Plan
Tullamore Industrial LP

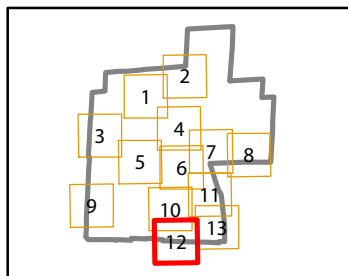
Figure 2.11
Proposed Development





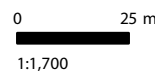
NOTES:
 1. Coordinate System: NAD 1983 UTM Zone 17N.
 2. Base features produced under license with the Ontario Ministry of Natural Resources and Forestry © Queen's Printer for Ontario, 2023; Toronto Region Conservation Authority, 2023.
 3. Orthoimagery © First Base Solutions, 2023. Imagery taken in 2022.
 4. Site plan from 10208 Draft Plan D5_2023-03-28.dwg

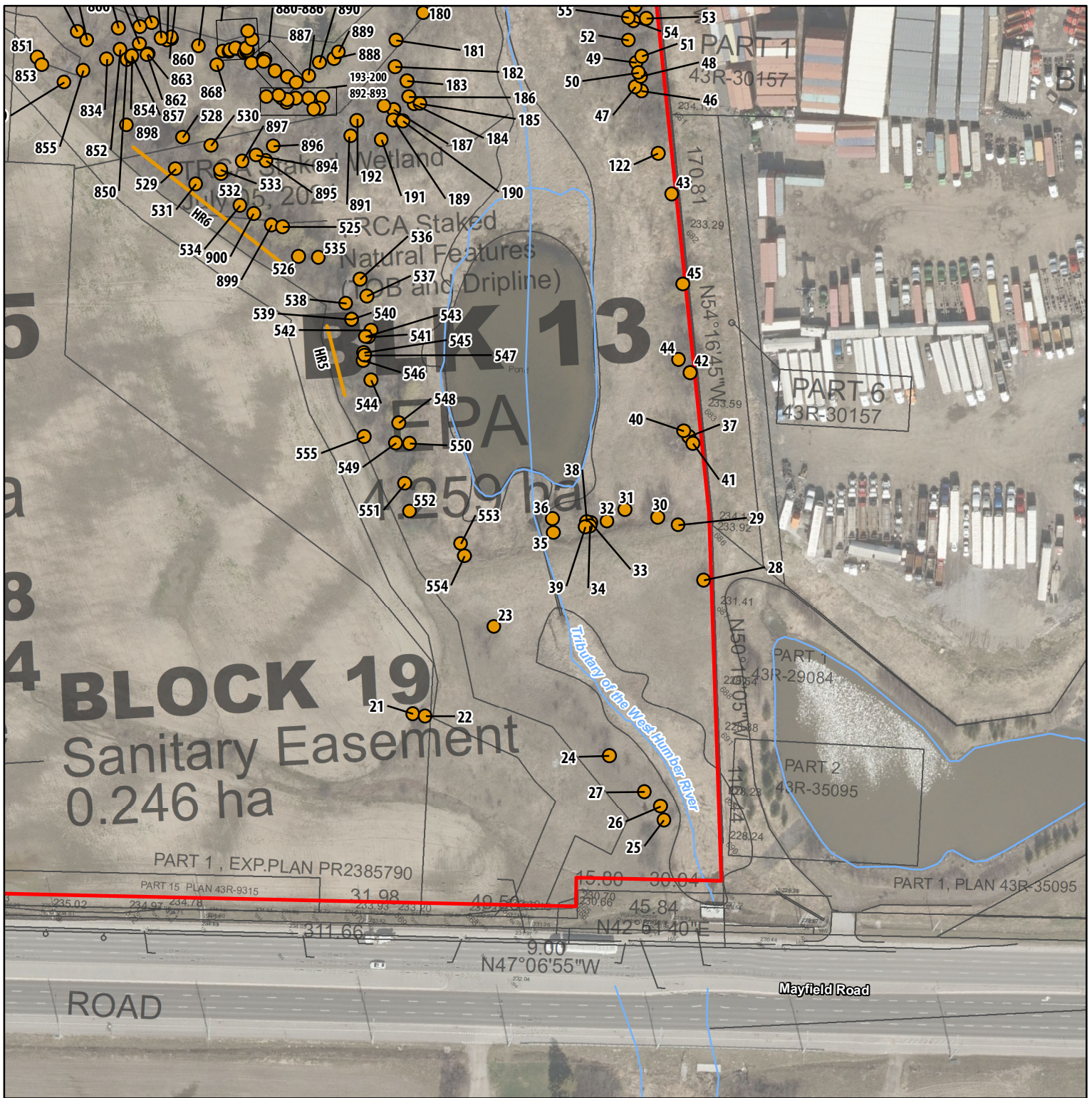
- Legend**
- Subject Lands (approximate)
 - Greenbelt Planning Area
 - Watercourse (TRCA)
- Tree Inventory**
- Removal



Arborist Report and Tree Preservation Plan
Tullamore Industrial LP

Figure 2.12
Proposed Development

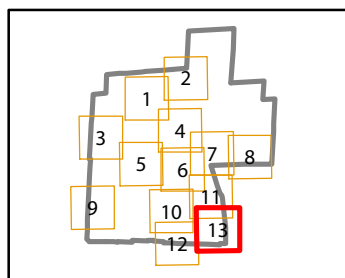




- NOTES:**
1. Coordinate System: NAD 1983 UTM Zone 17N.
 2. Base features produced under license with the Ontario Ministry of Natural Resources and Forestry © Queen's Printer for Ontario, 2023; Toronto Region Conservation Authority, 2023.
 3. Orthoimagery © First Base Solutions, 2023. Imagery taken in 2022.
 4. Site plan from 10208 Draft Plan D5_2023-03-28.dwg

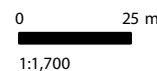
Legend

- Subject Lands (approximate)
- Watercourse (TRCA)
- Waterbody (LIO)
- Tree Inventory**
- Removal
- Hedgerow Inventory**
- Removal



Arborist Report and Tree Preservation Plan
Tullamore Industrial LP

Figure 2.13
Proposed Development



Tree ID Number	Species Common Name	Species Scientific Name	Multi-stem DBH ¹ (cm)	Stem 1 DBH (cm)	Stem 2 DBH (cm)	Stem 3 DBH (cm)	Stem 4 DBH (cm)	Stem 5 DBH (cm)	Crown Radius/TPZ (m)	Biological Health	Structural Health	Overall Health	Recommended Action	Number of Compensation Trees	Notes
134	Siberian Elm	<i>Ulmus pumila</i>	15	11	10	0	0	0	0.5	Fair	Poor	Fair	Removal	0	
135	Siberian Elm	<i>Ulmus pumila</i>	35	35	0	0	0	0	1	Fair	Fair	Fair	Removal	2	
136	Siberian Elm	<i>Ulmus pumila</i>	43	28	22	16	12	12	1	Fair	Fair	Fair	Removal	3	
137	Siberian Elm	<i>Ulmus pumila</i>	29	23	18	0	0	0	0.5	Fair	Poor	Poor	Removal	0	
138	Siberian Elm	<i>Ulmus pumila</i>	13	13	0	0	0	0	0.5	Fair	Fair	Fair	Removal	1	
139	Siberian Elm	<i>Ulmus pumila</i>	11	11	0	0	0	0	0.5	Fair	Fair	Fair	Removal	1	
140	Siberian Elm	<i>Ulmus pumila</i>	16	16	0	0	0	0	0.5	Fair	Fair	Fair	Removal	1	
141	Siberian Elm	<i>Ulmus pumila</i>	11	11	0	0	0	0	0.5	Fair	Fair	Fair	Removal	1	
142	Siberian Elm	<i>Ulmus pumila</i>	14	14	0	0	0	0	0.5	Fair	Fair	Fair	Removal	1	
143	Siberian Elm	<i>Ulmus pumila</i>	17	17	0	0	0	0	0.5	Good	Good	Good	Removal	1	
144	Siberian Elm	<i>Ulmus pumila</i>	17	17	0	0	0	0	0.5	Good	Good	Good	Removal	1	
145	Crack Willow	<i>Salix euxina</i>	21	21	0	0	0	0	0.5	Good	Good	Good	Removal	2	
146	Crack Willow	<i>Salix euxina</i>	25	23	11	0	0	0	0.5	Fair	Fair	Fair	Removal	2	
147	Crack Willow	<i>Salix euxina</i>	13	13	0	0	0	0	0.5	Good	Good	Good	Removal	1	
148	Crack Willow	<i>Salix euxina</i>	22	22	0	0	0	0	0.5	Good	Good	Good	Removal	2	
149	Crack Willow	<i>Salix euxina</i>	47	36	22	17	13	0	0.5	Fair	Fair	Fair	Removal	3	
150	Silver Maple	<i>Acer saccharinum</i>	13	13	0	0	0	0	0.5	Fair	Fair	Fair	Removal	1	
151	Crack Willow	<i>Salix euxina</i>	37	27	13	21	0	0	0.5	Fair	Fair	Fair	Removal	3	
152	White Elm	<i>Ulmus americana</i>	28	28	0	0	0	0	1	Good	Good	Good	Removal	2	
153	Crack Willow	<i>Salix euxina</i>	12	12	0	0	0	0	0.5	Good	Good	Good	Removal	1	
154	Crack Willow	<i>Salix euxina</i>	47	42	21	0	0	0	1	Good	Good	Good	Removal	3	
155	Manitoba Maple	<i>Acer negundo</i>	18	18	0	0	0	0	0.5	Fair	Fair	Fair	Removal	1	
156	Crack Willow	<i>Salix euxina</i>	33	33	0	0	0	0	0.5	Good	Good	Good	Removal	2	
157	Siberian Elm	<i>Ulmus pumila</i>	34	34	0	0	0	0	1.5	Good	Good	Good	Removal	2	
158	Crack Willow	<i>Salix euxina</i>	94	56	49	43	38	0	3	Good	Fair	Good	Removal	5	
159	Crack Willow	<i>Salix euxina</i>	95	48	49	42	37	34	6	Good	Good	Good	Removal	5	
160	Crack Willow	<i>Salix euxina</i>	118	92	56	47	0	0	4	Fair	Poor	Fair	Removal	0	
161	Silver Maple	<i>Acer saccharinum</i>	39	27	22	18	0	0	2	Good	Good	Good	Removal	3	
162	Crack Willow	<i>Salix euxina</i>	22	22	0	0	0	0	1.5	Good	Good	Good	Removal	2	
163	Crack Willow	<i>Salix euxina</i>	72	72	0	0	0	0	5	Fair	Fair	Fair	Removal	5	
164	Crack Willow	<i>Salix euxina</i>	93	93	0	0	0	0	1.5	Fair	Poor	Poor	Removal	0	
165	Crack Willow	<i>Salix euxina</i>	88	88	0	0	0	0	1.5	Poor	Poor	Poor	Removal	0	Heavily cracked and broken. Little live growth.
166	Crack Willow	<i>Salix euxina</i>	37	28	24	0	0	0	1.5	Poor	Poor	Poor	Removal	0	Main bike fallen. All growth from lateral branches from fallen tree
167	Crack Willow	<i>Salix euxina</i>	47	47	0	0	0	0	1	Fair	Poor	Poor	Removal	0	Mostly cracked, broken and decaying
168	Crack Willow	<i>Salix euxina</i>	24	14	19	0	0	0	0.5	Poor	Poor	Poor	Removal	0	
169	Siberian Elm	<i>Ulmus pumila</i>	38	38	0	0	0	0	0.5	Fair	Fair	Fair	Removal	3	
170	Siberian Elm	<i>Ulmus pumila</i>	35	35	0	0	0	0	0.5	Good	Good	Good	Removal	2	
171	Siberian Elm	<i>Ulmus pumila</i>	42	28	21	23	0	0	1	Good	Good	Good	Removal	3	
172	Siberian Elm	<i>Ulmus pumila</i>	24	24	0	0	0	0	0.5	Fair	Fair	Fair	Removal	2	
173	Siberian Elm	<i>Ulmus pumila</i>	22	22	0	0	0	0	0.5	Fair	Fair	Fair	Removal	2	
174	White Spruce	<i>Picea glauca</i>	46	46	0	0	0	0	1	Good	Good	Good	Removal	3	
175	Siberian Elm	<i>Ulmus pumila</i>	25	25	0	0	0	0	0.5	Poor	Poor	Poor	Removal	0	
176	Common Apple	<i>Malus pumila</i>	39	22	28	16	0	0	1.5	Good	Good	Good	Removal	3	
177	Crack Willow	<i>Salix euxina</i>	76	53	28	33	33	0	1.5	Fair	Fair	Fair	Removal	5	
178	Siberian Elm	<i>Ulmus pumila</i>	36	28	22	0	0	0	1.5	Good	Good	Good	Removal	3	
179	Siberian Elm	<i>Ulmus pumila</i>	17	17	0	0	0	0	0.5	Good	Good	Good	Removal	1	
180	Crack Willow	<i>Salix euxina</i>	125	125	0	0	0	0	2	Good	Good	Good	Removal	5	
181	Siberian Elm	<i>Ulmus pumila</i>	22	22	0	0	0	0	1	Good	Good	Good	Removal	2	
182	Siberian Elm	<i>Ulmus pumila</i>	13	13	0	0	0	0	0.5	Fair	Fair	Fair	Removal	1	
183	Norway Maple	<i>Acer platanoides</i>	32	32	0	0	0	0	4	Good	Good	Good	Removal	2	
184	Siberian Elm	<i>Ulmus pumila</i>	27	27	0	0	0	0	1.5	Good	Good	Good	Removal	2	
185	Siberian Elm	<i>Ulmus pumila</i>	31	31	0	0	0	0	1	Good	Good	Good	Removal	2	
186	Siberian Elm	<i>Ulmus pumila</i>	11	11	0	0	0	0	0.5	Good	Good	Good	Removal	1	
187	Siberian Elm	<i>Ulmus pumila</i>	13	13	0	0	0	0	0.5	Good	Good	Good	Removal	1	
188	Siberian Elm	<i>Ulmus pumila</i>	26	26	0	0	0	0	0.5	Good	Good	Good	Removal	2	
189	Silver Maple	<i>Acer saccharinum</i>	43	43	0	0	0	0	1.5	Good	Good	Good	Removal	3	
190	Crack Willow	<i>Salix euxina</i>	65	65	0	0	0	0	1.5	Poor	Poor	Poor	Removal	0	
191	Silver Maple	<i>Acer saccharinum</i>	37	32	19	0	0	0	1.5	Good	Good	Good	Removal	3	
192	Silver Maple	<i>Acer saccharinum</i>	44	44	0	0	0	0	2	Good	Good	Good	Removal	3	
193	Manitoba Maple	<i>Acer negundo</i>	18	18	0	0	0	0	1.5	Good	Good	Good	Removal	1	
194	Crack Willow	<i>Salix euxina</i>	46	46	0	0	0	0	1.5	Good	Good	Good	Removal	3	
195	Manitoba Maple	<i>Acer negundo</i>	18	18	0	0	0	0	2	Good	Good	Good	Removal	1	
196	Manitoba Maple	<i>Acer negundo</i>	17	17	0	0	0	0	2	Good	Good	Good	Removal	1	
197	Manitoba Maple	<i>Acer negundo</i>	13	13	0	0	0	0	1	Good	Good	Good	Removal	1	
198	Siberian Elm	<i>Ulmus pumila</i>	23	23	0	0	0	0	1	Good	Good	Good	Removal	2	
199	Siberian Elm	<i>Ulmus pumila</i>	14	14	0	0	0	0	1	Good	Good	Good	Removal	1	

Tree ID Number	Species Common Name	Species Scientific Name	Multi-stem DBH ¹ (cm)	Stem 1 DBH (cm)	Stem 2 DBH (cm)	Stem 3 DBH (cm)	Stem 4 DBH (cm)	Stem 5 DBH (cm)	Crown Radius/TPZ (m)	Biological Health	Structural Health	Overall Health	Recommended Action	Number of Compensation Trees	Notes
611	Manitoba Maple	<i>Acer negundo</i>	10	10	0	0	0	0	1	Good	Good	Good	Removal	1	
612	Manitoba Maple	<i>Acer negundo</i>	16	16	0	0	0	0	1.5	Good	Fair	Fair	Removal	1	On lean
613	Manitoba Maple	<i>Acer negundo</i>	15	15	0	0	0	0	1.5	Good	Fair	Fair	Removal	1	On lean
614	Manitoba Maple	<i>Acer negundo</i>	17	17	0	0	0	0	3	Good	Fair	Fair	Removal	1	On lean
615	Manitoba Maple	<i>Acer negundo</i>	24	17	17	0	0	0	3	Good	Fair	Fair	Removal	2	On lean, codominant stems
616	Manitoba Maple	<i>Acer negundo</i>	17	17	0	0	0	0	2	Good	Fair	Fair	Removal	1	On lean
617	Eastern White Cedar	<i>Thuja occidentalis</i>	30	30	0	0	0	0	2	Good	Good	Good	Removal	2	
618	Manitoba Maple	<i>Acer negundo</i>	16	12	10	0	0	0	1.5	Fair	Fair	Fair	Removal	1	Dead limb, missing bark
619	Manitoba Maple	<i>Acer negundo</i>	13	13	0	0	0	0	1.5	Good	Good	Good	Removal	1	
620	Manitoba Maple	<i>Acer negundo</i>	15	15	0	0	0	0	1.5	Good	Good	Good	Removal	1	
621	White Spruce	<i>Picea glauca</i>	23	23	0	0	0	0	1	Good	Good	Good	Removal	2	
622	Manitoba Maple	<i>Acer negundo</i>	13	13	0	0	0	0	1.5	Good	Good	Good	Removal	1	
623	Manitoba Maple	<i>Acer negundo</i>	22	22	0	0	0	0	2	Good	Fair	Fair	Removal	2	On lean
624	Manitoba Maple	<i>Acer negundo</i>	15	15	0	0	0	0	1.5	Good	Fair	Fair	Removal	1	On lean
625	Eastern White Cedar	<i>Thuja occidentalis</i>	18	18	0	0	0	0	2	Good	Fair	Fair	Removal	1	On lean
626	Eastern White Cedar	<i>Thuja occidentalis</i>	13	13	0	0	0	0	2	Good	Fair	Fair	Removal	1	On lean
627	Eastern White Cedar	<i>Thuja occidentalis</i>	30	30	0	0	0	0	2	Good	Good	Good	Removal	2	
628	Manitoba Maple	<i>Acer negundo</i>	12	12	0	0	0	0	2	Good	Good	Good	Removal	1	
629	Manitoba Maple	<i>Acer negundo</i>	13	13	0	0	0	0	2	Good	Good	Good	Removal	1	
630	Eastern White Cedar	<i>Thuja occidentalis</i>	31	22	18	12	0	0	2	Good	Fair	Fair	Removal	2	On lean
631	Eastern White Cedar	<i>Thuja occidentalis</i>	30	30	0	0	0	0	2	Good	Fair	Fair	Removal	2	On lean
632	Manitoba Maple	<i>Acer negundo</i>	13	13	0	0	0	0	2	Good	Fair	Fair	Removal	1	On lean
633	Eastern White Cedar	<i>Thuja occidentalis</i>	12	12	0	0	0	0	2	Good	Fair	Fair	Removal	1	On lean
634	Eastern White Cedar	<i>Thuja occidentalis</i>	12	12	0	0	0	0	2	Good	Fair	Fair	Removal	1	On lean
635	Eastern White Cedar	<i>Thuja occidentalis</i>	23	15	14	10	0	0	2	Good	Fair	Fair	Removal	2	Rubbing against tree 634, multiple stems
636	Manitoba Maple	<i>Acer negundo</i>	12	12	0	0	0	0	2	Good	Fair	Fair	Removal	1	Rubbing against tree 635
637	Manitoba Maple	<i>Acer negundo</i>	27	27	0	0	0	0	2	Good	Good	Good	Removal	2	DBH approximate
638	Manitoba Maple	<i>Acer negundo</i>	12	12	0	0	0	0	1	Good	Good	Good	Removal	1	
639	Manitoba Maple	<i>Acer negundo</i>	11	11	0	0	0	0	1.5	Good	Good	Good	Removal	1	
640	Manitoba Maple	<i>Acer negundo</i>	28	20	20	0	0	0	1.5	Good	Fair	Fair	Removal	2	On lean, codominant stems
641	Manitoba Maple	<i>Acer negundo</i>	17	17	0	0	0	0	3.5	Fair	Fair	Fair	Removal	1	On lean
642	Manitoba Maple	<i>Acer negundo</i>	33	17	17	17	12	10	3.5	Fair	Fair	Fair	Removal	2	Suckering
643	Manitoba Maple	<i>Acer negundo</i>	16	12	10	0	0	0	3	Fair	Fair	Fair	Removal	1	Suckering
644	Silver Maple	<i>Acer saccharinum</i>	85	85	0	0	0	0	5	Good	Fair	Fair	Removal	5	Two stems (split above DBH), spreading limbs and branches
645	Manitoba Maple	<i>Acer negundo</i>	52	52	0	0	0	0	3	Good	Poor	Fair	Removal	0	Grown into fence, broken limb
646	Manitoba Maple	<i>Acer negundo</i>	75	75	0	0	0	0	3	Good	Fair	Fair	Removal	5	Codominant stems (split at DBH), knots in stem
647	Manitoba Maple	<i>Acer negundo</i>	57	45	35	0	0	0	3	Good	Poor	Fair	Removal	0	On lean, knots in stem, weak union
648	Manitoba Maple	<i>Acer negundo</i>	30	30	0	0	0	0	3	Good	Fair	Fair	Removal	2	On lean, knots in stem
649	Manitoba Maple	<i>Acer negundo</i>	46	22	22	28	13	13	4	Good	Fair	Fair	Removal	3	Multiple stems, twisted stems, limb rubbing with tree 650, dead limb

Hedgerow ID Number	Dominant Species Common Name	Dominant Species Scientific Name	Stem Count	Size (DBH)	Overall Health	Recommended Action
HR1	Blue Spruce and Austrian Pine	<i>Picea pungens & Pinus nigra</i>	9	10-20 cm	Good	Preservation
HR2	White Spruce	<i>Picea glauca</i>	6	10-30 cm	Good	Preservation
HR3	Norway Spruce	<i>Picea abies</i>	18	25-50 cm	Good	Removal
HR4	Norway Spruce	<i>Picea abies</i>	10	25-50 cm	Good	Removal
HR5	Siberian Elm	<i>Ulmus pumila</i>	8	10-30 cm	Good	Removal