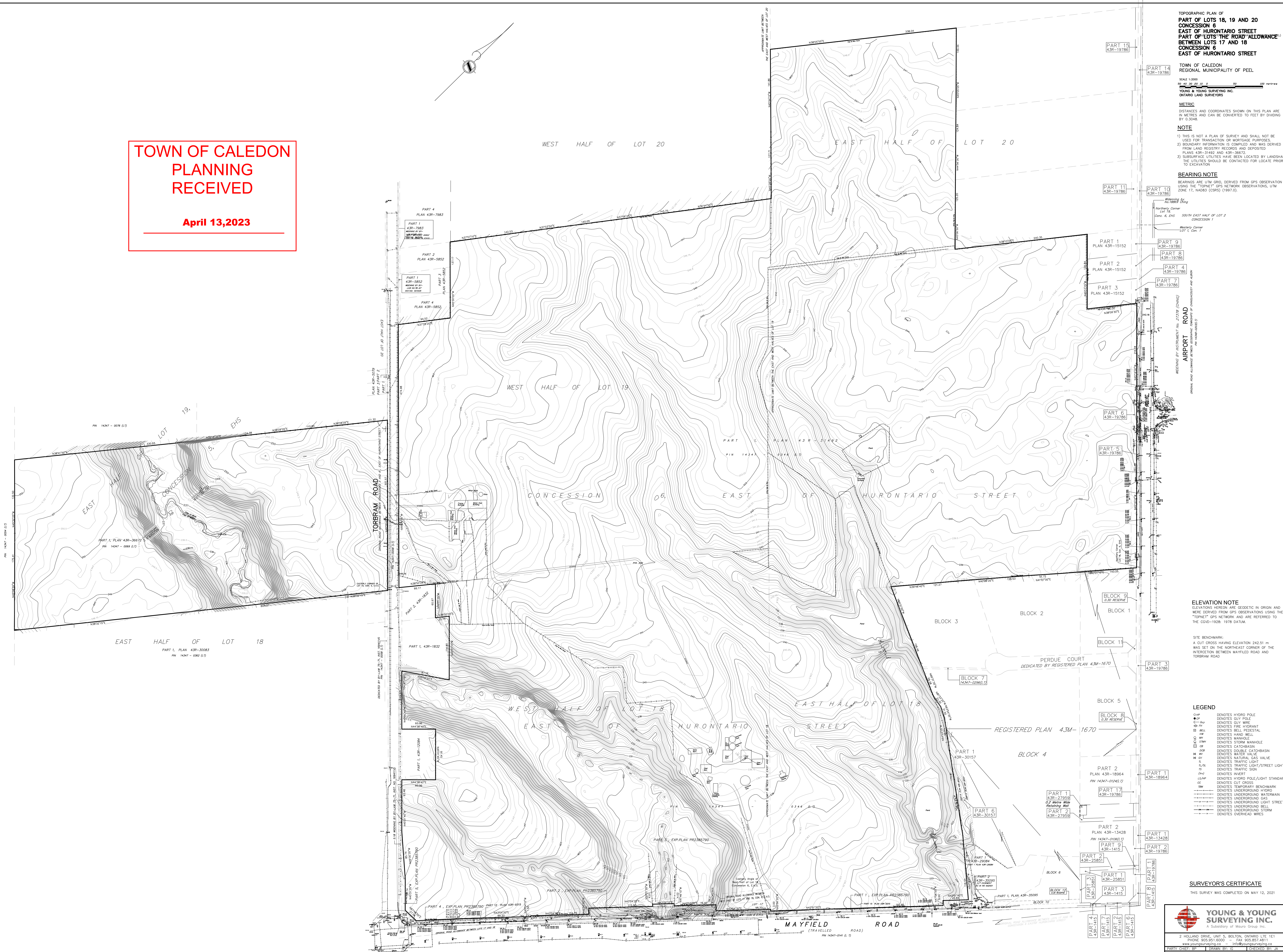


TOWN OF CALEDON
PLANNING
RECEIVED

April 13, 2023



TOPOGRAPHIC PLAN OF
PART OF LOTS 18, 19 AND 20
CONCESSION 6
EAST OF HURONTARIO STREET
BETWEEN LOTS 17 AND 18
CONCESSION 6
EAST OF HURONTARIO STREET

TOWN OF CALEDON
REGIONAL MUNICIPALITY OF PEE
SCALE 1:2000
DISTANCES AND COORDINATES SHOWN ON THIS PLAN ARE
IN METRES AND CAN BE CONVERTED TO FEET BY DIVIDING
BY 0.3048.

NOTE
1) THIS IS NOT A PLAN OF SURVEY AND SHALL NOT BE
USED FOR TRANSACTION OR MORTGAGE PURPOSES.
2) BOUNDARY INFORMATION IS COMPILED AND WAS DERIVED
FROM LAND REGISTRY RECORDS AND DEPOSITED
PLANS 43R-31492 AND 43R-36672.
3) SUBSURFACE UTILITIES HAVE BEEN LOCATED BY LANDSHARK
THE UTILITIES SHOULD BE CONTACTED FOR LOCATE PRIOR
TO EXCAVATION.

BEARING NOTE
BEARINGS ARE UTM GRID, DERIVED FROM GPS OBSERVATION
USING THE "TOPNET" GPS NETWORK OBSERVATIONS, UTM
ZONE 17, NAD83 (CGRS) (1987).

BEARING NOTE
BEARINGS ARE UTM GRID, DERIVED FROM GPS OBSERVATION
USING THE "TOPNET" GPS NETWORK OBSERVATIONS, UTM
ZONE 17, NAD83 (CGRS) (1987).

BEARING NOTE
BEARINGS ARE UTM GRID, DERIVED FROM GPS OBSERVATION
USING THE "TOPNET" GPS NETWORK OBSERVATIONS, UTM
ZONE 17, NAD83 (CGRS) (1987).

BEARING NOTE
BEARINGS ARE UTM GRID, DERIVED FROM GPS OBSERVATION
USING THE "TOPNET" GPS NETWORK OBSERVATIONS, UTM
ZONE 17, NAD83 (CGRS) (1987).

BEARING NOTE
BEARINGS ARE UTM GRID, DERIVED FROM GPS OBSERVATION
USING THE "TOPNET" GPS NETWORK OBSERVATIONS, UTM
ZONE 17, NAD83 (CGRS) (1987).

BEARING NOTE
BEARINGS ARE UTM GRID, DERIVED FROM GPS OBSERVATION
USING THE "TOPNET" GPS NETWORK OBSERVATIONS, UTM
ZONE 17, NAD83 (CGRS) (1987).

BEARING NOTE
BEARINGS ARE UTM GRID, DERIVED FROM GPS OBSERVATION
USING THE "TOPNET" GPS NETWORK OBSERVATIONS, UTM
ZONE 17, NAD83 (CGRS) (1987).

BEARING NOTE
BEARINGS ARE UTM GRID, DERIVED FROM GPS OBSERVATION
USING THE "TOPNET" GPS NETWORK OBSERVATIONS, UTM
ZONE 17, NAD83 (CGRS) (1987).

BEARING NOTE
BEARINGS ARE UTM GRID, DERIVED FROM GPS OBSERVATION
USING THE "TOPNET" GPS NETWORK OBSERVATIONS, UTM
ZONE 17, NAD83 (CGRS) (1987).

BEARING NOTE
BEARINGS ARE UTM GRID, DERIVED FROM GPS OBSERVATION
USING THE "TOPNET" GPS NETWORK OBSERVATIONS, UTM
ZONE 17, NAD83 (CGRS) (1987).

BEARING NOTE
BEARINGS ARE UTM GRID, DERIVED FROM GPS OBSERVATION
USING THE "TOPNET" GPS NETWORK OBSERVATIONS, UTM
ZONE 17, NAD83 (CGRS) (1987).

BEARING NOTE
BEARINGS ARE UTM GRID, DERIVED FROM GPS OBSERVATION
USING THE "TOPNET" GPS NETWORK OBSERVATIONS, UTM
ZONE 17, NAD83 (CGRS) (1987).

BEARING NOTE
BEARINGS ARE UTM GRID, DERIVED FROM GPS OBSERVATION
USING THE "TOPNET" GPS NETWORK OBSERVATIONS, UTM
ZONE 17, NAD83 (CGRS) (1987).

BEARING NOTE
BEARINGS ARE UTM GRID, DERIVED FROM GPS OBSERVATION
USING THE "TOPNET" GPS NETWORK OBSERVATIONS, UTM
ZONE 17, NAD83 (CGRS) (1987).

BEARING NOTE
BEARINGS ARE UTM GRID, DERIVED FROM GPS OBSERVATION
USING THE "TOPNET" GPS NETWORK OBSERVATIONS, UTM
ZONE 17, NAD83 (CGRS) (1987).

BEARING NOTE
BEARINGS ARE UTM GRID, DERIVED FROM GPS OBSERVATION
USING THE "TOPNET" GPS NETWORK OBSERVATIONS, UTM
ZONE 17, NAD83 (CGRS) (1987).

BEARING NOTE
BEARINGS ARE UTM GRID, DERIVED FROM GPS OBSERVATION
USING THE "TOPNET" GPS NETWORK OBSERVATIONS, UTM
ZONE 17, NAD83 (CGRS) (1987).

BEARING NOTE
BEARINGS ARE UTM GRID, DERIVED FROM GPS OBSERVATION
USING THE "TOPNET" GPS NETWORK OBSERVATIONS, UTM
ZONE 17, NAD83 (CGRS) (1987).

BEARING NOTE
BEARINGS ARE UTM GRID, DERIVED FROM GPS OBSERVATION
USING THE "TOPNET" GPS NETWORK OBSERVATIONS, UTM
ZONE 17, NAD83 (CGRS) (1987).

BEARING NOTE
BEARINGS ARE UTM GRID, DERIVED FROM GPS OBSERVATION
USING THE "TOPNET" GPS NETWORK OBSERVATIONS, UTM
ZONE 17, NAD83 (CGRS) (1987).

BEARING NOTE
BEARINGS ARE UTM GRID, DERIVED FROM GPS OBSERVATION
USING THE "TOPNET" GPS NETWORK OBSERVATIONS, UTM
ZONE 17, NAD83 (CGRS) (1987).

BEARING NOTE
BEARINGS ARE UTM GRID, DERIVED FROM GPS OBSERVATION
USING THE "TOPNET" GPS NETWORK OBSERVATIONS, UTM
ZONE 17, NAD83 (CGRS) (1987).

BEARING NOTE
BEARINGS ARE UTM GRID, DERIVED FROM GPS OBSERVATION
USING THE "TOPNET" GPS NETWORK OBSERVATIONS, UTM
ZONE 17, NAD83 (CGRS) (1987).