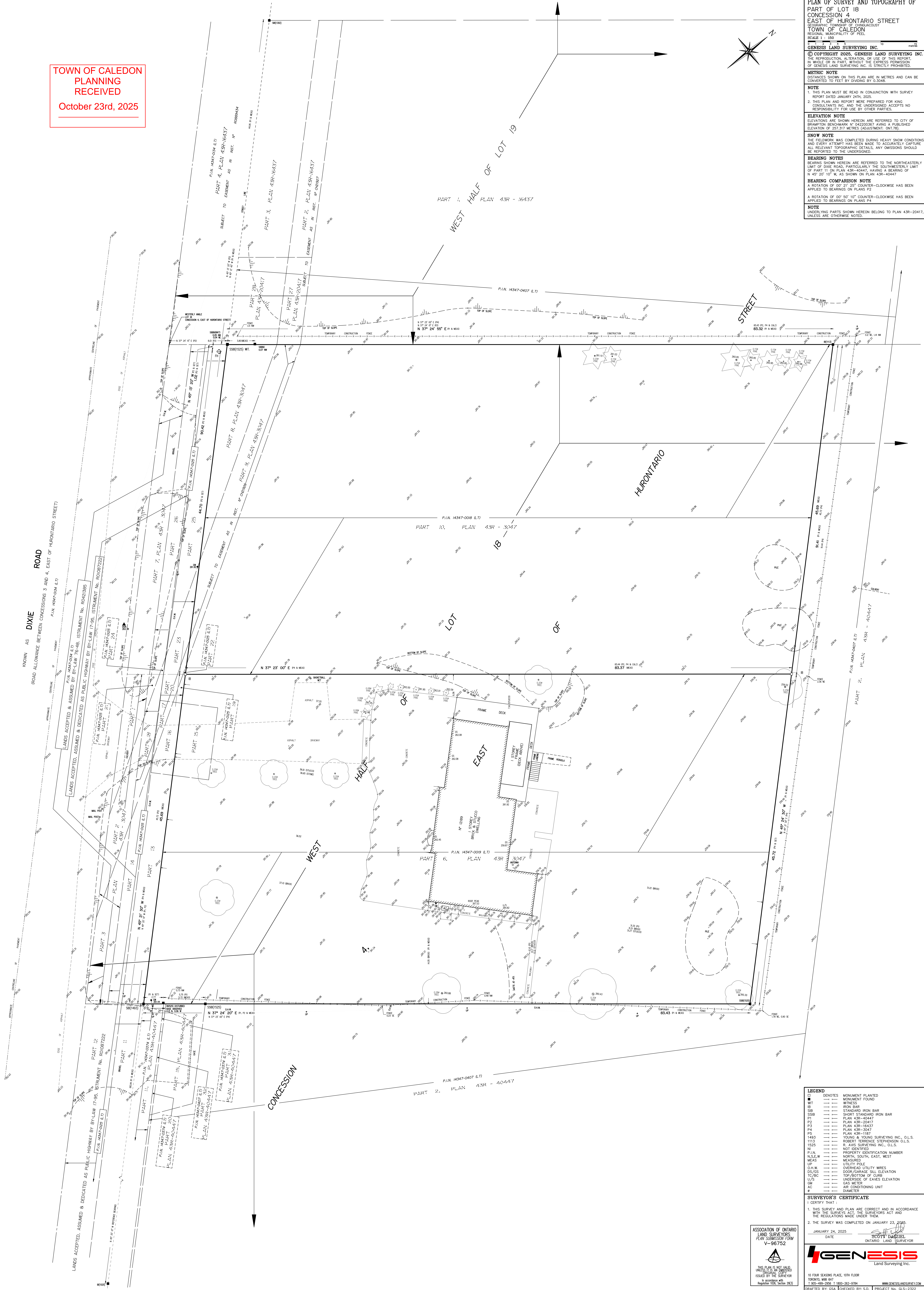


TOWN OF CALEDON
PLANNING
RECEIVED
October 23rd, 2025



PLAN OF SURVEY AND TOPOGRAPHY OF
PART OF LOT 18
CONCESSION 4
EAST OF HURONTARIO STREET
AND WEST OF DUNDAS STREET
TOWN OF CALEDON
COUNTY OF YORK
SCALE 1" = 100'
10
metres

GENESIS LAND SURVEYING INC.
© COPYRIGHT 2025, GENESIS LAND SURVEYING
THE REPRODUCTION, ALTERATION, OR USE OF THIS REPORT,
WHETHER IN WHOLE OR IN PART, WITHOUT THE EXPRESS PERMISSION
OF GENESIS LAND SURVEYING INC. IS STRICTLY PROHIBITED.

METRIC NOTE
DISTANCES SHOWN ON THIS PLAN ARE IN METERS AND CAN BE
CONVERTED TO FEET BY DIVIDING BY 0.3048.

NOTE
READERS MUST BE READ IN CONJUNCTION WITH SURVEY
REPORT DATED JANUARY 24TH, 2025.
2. THIS REPORT IS PROVIDED AS A GUIDE TO ACCURATELY CAPTURE
CONSULTANTS' INKS AND THE UNDERSIGNED ACCEPTS NO
LIABILITY FOR ANY USE BY OTHER PARTIES.

ELEVATION NOTE
ELEVATIONS ARE SHOWN HEREIN ARE REFERRED TO CITY OF
CAMERATION BENCHMARK N 422002367, AVOID A PUBLISHED
ELEVATION OF 101.371 METERS (ADJUSTMENT 08/7/90).

SNOW NOTE
THE FIELDWORK WAS COMPLETED DURING HEAVY SNOW COVER
AND THE UNDERSIGNED HAS MADE THE NECESSARY ADJUSTMENTS TO
ALL RELEVANT TOPOGRAPHIC DETAILS, ANY OMISSIONS SHOULD
BE CONSIDERED AS NOT BEING UNDERSIGNED.

BEARING NOTES
BEARINGS SHOWN HEREIN ARE REFERRED TO THE NORTHEAST
QUARTER CORNER OF THE 1/4 SECTION 28, THE SOUTHWESTERNLY LINE
OF PART 11 ON PLAN 436-40447, HAVING A BEARING OF
N 89° 45' 20" E 420.00 METERS TO PLAN 436-40447.

BEARING COMPASSION NOTE
A ROTATION OF 0° 20' 25" COUNTER-CLOCKWISE HAS BEEN
APPLIED TO BEARINGS ON PLAN 436-40447.
A ROTATION OF 0° 20' 20" 10" COUNTER-CLOCKWISE HAS BEEN
APPLIED TO BEARINGS ON PLANS 436-40447.

NOTE
BEARINGS PARTS SHOWN HEREIN BELONG TO PLAN 436-20
ARE THEREFORE NOT HEREIN.

LEGEND	
□	— DENOTES MONUMENT PLANTED
□	— MONUMENT FOUND
W	— WITNESS
IR	— IRON BAR
SS	— STANDARD IRON BAR
SSIB	— SHORT STANDARD IRON BAR
P	— PLAIN 438—20447
P3	— PLAIN 438—16437
P5	— PLAIN 438—30457
P2	— PLAIN 438—1187
Y	— YOUNG & YOUNG SURVEYING INC., O.S.
1122	— ROBERT TERENCE STEPHENSON O.L.S.
N	— NORTON SURVEYING INC., O.L.S.
NI	— NOT IDENTIFIED
P.I.N.	— PROPERTY IDENTIFICATION NUMBER
W	— WEST, SOUTH, EAST, WEST
MEAS	— MEASURED
UTL	— UTILITY
O.U.W.	— OVERHEAD UTILITY WIRES
DS/GS	— DOR/CARGAGE SILL ELEVATION
T/B	— TOP/BOTTOM OF CURB
U/S	— UNDERSIDE OF EAVES ELEVATION
G	— GAS METER
AC	— AIR CONDITIONING UNIT

SURVEYOR'S CERTIFICATE
I CERTIFY THAT :

1. THIS SURVEY AND PLAN ARE CORRECT AND IN ACCORDANCE WITH THE SURVEYS ACT, THE SURVEYORS ACT AND THE REGULATIONS MADE UNDER THEM.
2. THE SURVEY WAS COMPLETED ON JANUARY 23, 2025.

JANUARY 24, 2025
DATE

SCOTT DATZEL
ONTARIO LAND SURVEYOR

GENESIS
Land Surveying Inc.

10 FOUR SEASONS PLACE, 10TH FLOOR
TORONTO, M9B 6H7
T 905-499-2956 T 1800-262-9784 WWW.GENESISLANDSURVEY.COM

DRAFTED BY: GSA	CHECKED BY: S.D.	PROJECT No. GLS-2322
-----------------	------------------	----------------------