

TOWN OF CALEDON  
PLANNING RECEIVED  
October 17, 2024



**LEGEND**

	PROPOSED FIN. GRADE
	EXISTING GRADE
	PROPOSED TO MATCH EXISTING
	PROPOSED TOP OF CURB
	PROPOSED SWALE
	PROPOSED TOP OF WALL
	PROPOSED BOTTOM OF WALL
	MAN DOOR LOCATIONS
	OVERHEAD DOOR LOCATIONS
	EXISTING SAN MANHOLE
	EXISTING STM MANHOLE
	PROPOSED CATCH BASIN
	PROPOSED CATCH BASIN MANHOLE
	PROPOSED DOUBLE CATCH BASIN MANHOLE
	PROPOSED SANITARY MANHOLE
	PROPOSED STORM MANHOLE
	FIRE HYDRANT AND VALVE
	VALVE AND BOX
	PONDING AREAS
	OVERLAND FLOW
	RETAINING WALL LOCATION

owner  
**EVEREST TRANSPORTATION INC.**  
12155 Coleraine Drive  
Bolton, Ontario, L7E 3B4

**WHEELWRIGHT GROUP INC.**  
ENGINEERS AND CONTRACTORS  
110 FENMAR DRIVE  
TORONTO, ONTARIO, M9L 1M5  
TEL: (416) 741-2630  
FAX: (416) 741-9059

PAVEMENT STRUCTURE DESIGN DETAILS, SPECIFICATIONS AND SUBDRAINAGE DESIGN IS NOT UNDER THE CIVIL DESIGN SCOPE. CONTRACTOR IS TO REFER TO GEOTECHNICAL REPORT RELATED SPECIFICATIONS. CONTRACTOR IS TO COORDINATE PAVEMENT MAKEUP AND SUBDRAINAGE INSPECTION WITH GEOTECHNICAL CONSULTANT.  
A.M. CANDARAS ASSOCIATES INC. ASSUMES NO RESPONSIBILITY RELATING TO CONSTRUCTION AND INSPECTION OF THE PAVEMENT STRUCTURE.

CONTRACTOR TO BE RESPONSIBLE FOR VERIFYING THE LOCATIONS OF ALL EXISTING UNDERGROUND AND ABOVE UTILITIES AND SERVICES. THE CONTRACTOR SHALL ADVISE THE ENGINEER OF ANY DISCREPANCIES PRIOR TO PROCEEDING WITH CONSTRUCTION. VARIOUS UTILITIES CONCERNED TO BE GIVEN REQUIRED ADVANCED NOTICE PRIOR TO ANY DIGGING, FOR STAKE OUT.  
A.M. CANDARAS ASSOCIATES INC. ASSUMES NO RESPONSIBILITY FOR THE ACCURACY OF THE LOCATION OF EXISTING UTILITIES AS INDICATED ON THIS DRAWING.

No.	Date	By	REVISIONS
1	OCT 16, 24	R.P.A.	ISSUED FOR REVIEW

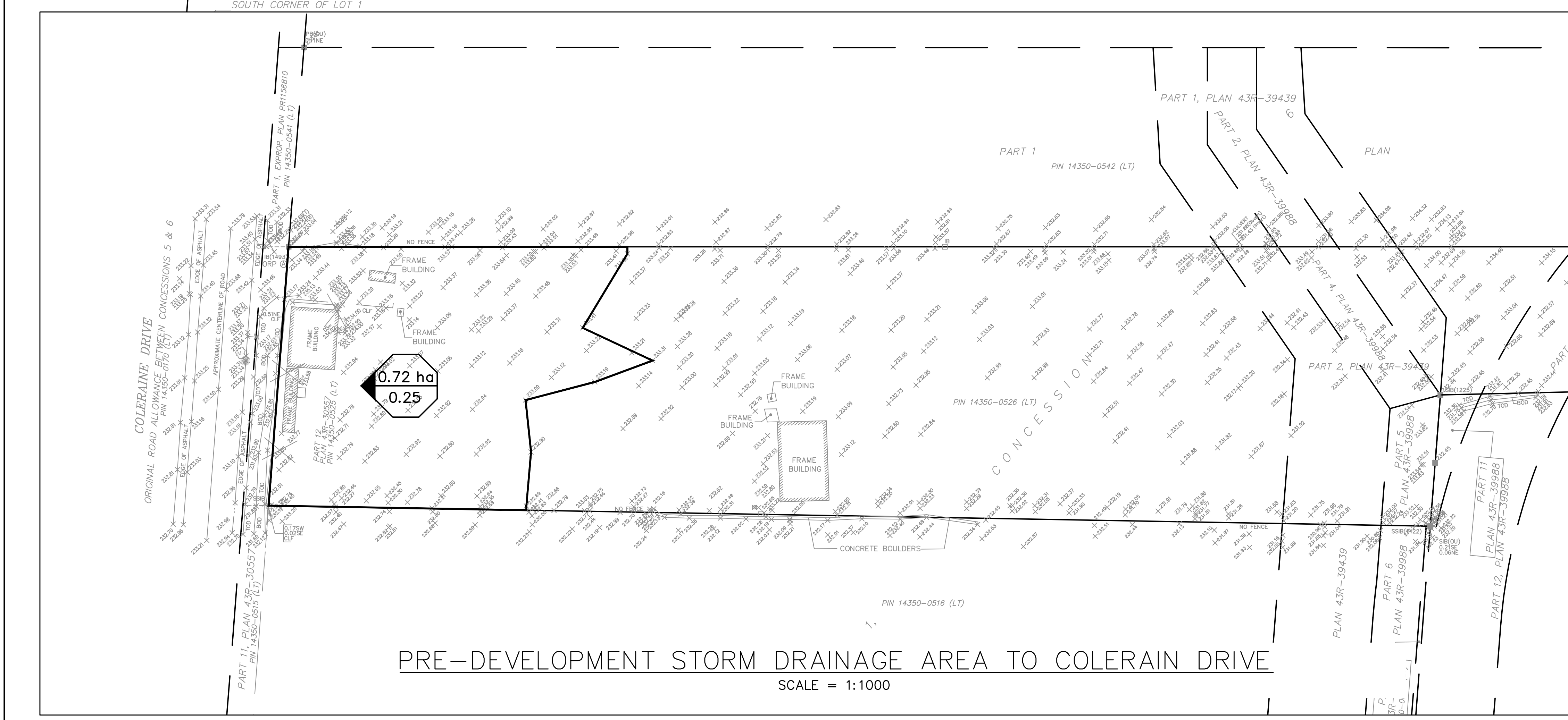
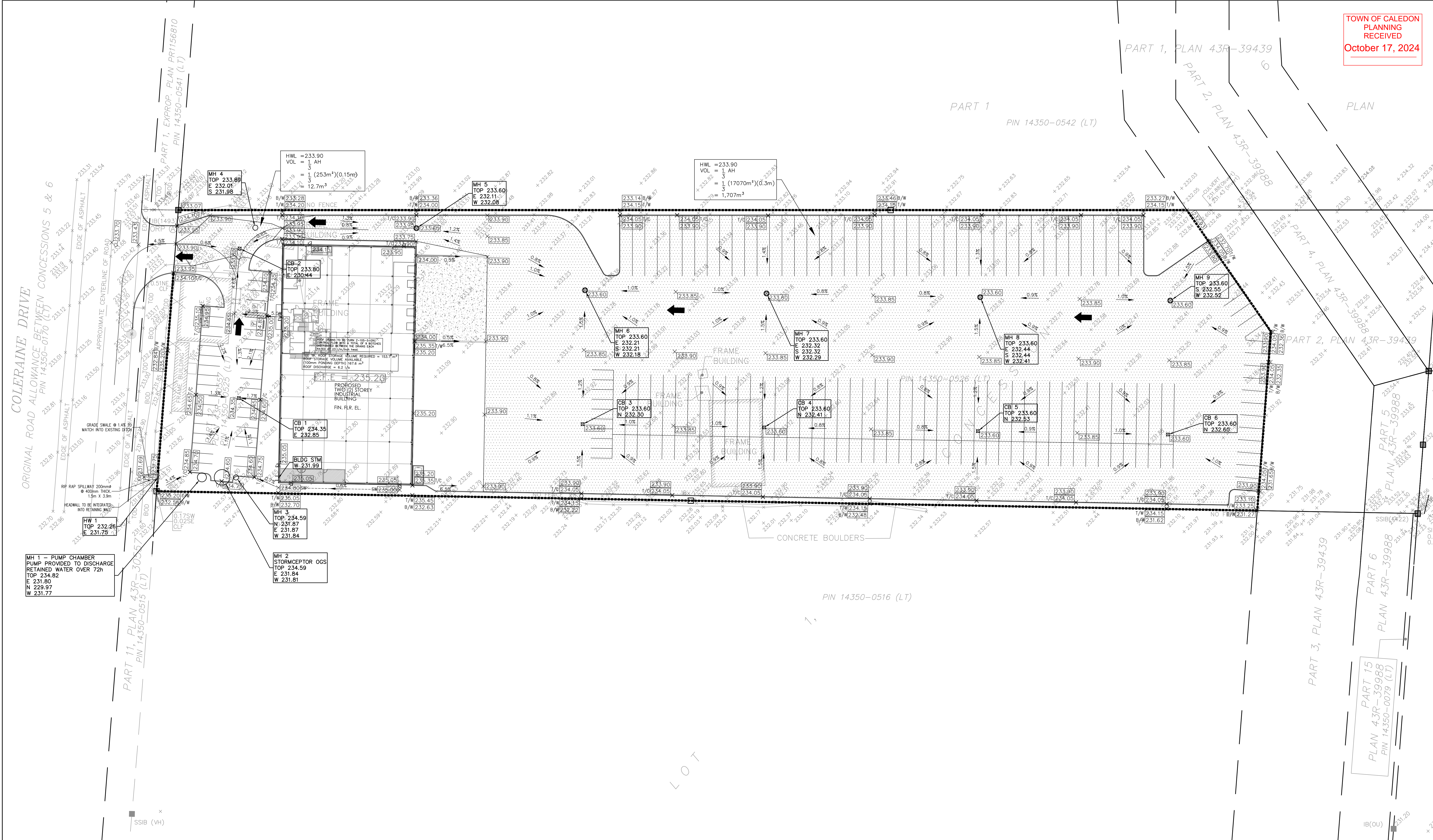
a.m.candaradas associates inc.  
consulting engineers  
8551 Weston rd., suite 203  
Woodbridge ont. L4L 9R4  
905-850-8020 Fax 905-850-8099  
Email: civil@amcai.com

12155 COLERAINE DRIVE  
PROPOSED INDUSTRIAL BUILDING

TOWN OF CALEDON  
REGION OF PEEL

CONCEPT SITE GRADING &  
STORMWATER MANAGEMENT PLAN

SCALE: 1:400 DATE: OCT 2024 PROJ No. 2417  
DRAWN: R.P.A. CHK'D: A.M.C. PLAN No.  
DESIGNED: A.M.C. SHEET 1 OF 1



**Town of Caledon General Notes - Site Plan Submissions**

The following standard notes are to appear on the Site Grading and Servicing Plans for site plan submissions:

- Construction for this project to comply with the most current version of the Development Standards, Policies and Guidelines, prepared by the Town of Caledon and the Ontario Provincial Standards and Specifications.
- All construction shall be carried out in accordance with the requirements of the Occupational Health and Safety Act and Regulations for construction projects.
- A minimum of forty-eight (48) hours prior to commencing construction within the municipal right of way the Contractor must contact the following:  
The Town of Caledon  
905-584-2272  
The Region of Peel Enbridge Consumers Care  
Hydro One - Bell Canada  
Peel Region Fire and Emergency Services
- A Right of Way Occupancy permit must be obtained from the Town of Caledon a minimum of 14 days prior to commencing any works within the municipal right of way.
- All drawings to be well-constructed and prepared to a standard approved by the Town of Caledon and Conservation Authority prior to the issuance of a building permit.
- Street curbs are to be installed prior to any construction on the site and shall be maintained throughout the construction period to the satisfaction of the Town and the applicable regulatory authority.
- Any changes to grades or setbacks from the original approved site plan must be submitted by the Engineer to the Town for approval prior to construction.
- A minimum of 1.5m clearance is to be provided from the limits of all sidewalks and driveways to existing utility structures within the municipal right of way. If this clearance is not maintained, they shall be relocated at the applicant's expense.
- Street curbs are to be continuous through the proposed entrance.
- All sidewalks to be restored with 300mm minimum of topsoil and seed to the satisfaction of the Town.
- The minimum pavement design for the asphalt driveway apron within the municipal right of way shall be as follows:  
40mm H-2 Asphalt  
100mm C-2 Aggregate  
300mm C-3 Granular B
- The consultant shall review the above with respect to the expected usage.
- Structure design of the fire route is required to support an 18 ton vehicle.
- Service Connection Backfill to be discussed with the Town.

**REASON OF FEEL NOTE:**

- All setbacks and concrete/epoxy must be completed in the current Project.
- Maximum and/or minimum concrete setbacks (10m/12m) and depth must be 10m/12m. If a 4m setback is required, the concrete must be 10m/12m deep and 10m/12m wide.
- Minimum concrete depth must be 10cm. If a 15cm depth is required, the concrete must be 10cm/15cm deep and 10m/12m wide.
- Minimum concrete width must be 10cm. If a 15cm width is required, the concrete must be 10cm/15cm deep and 10m/12m wide.
- Minimum concrete depth must be 10cm. If a 15cm depth is required, the concrete must be 10cm/15cm deep and 10m/12m wide.
- Minimum concrete width must be 10cm. If a 15cm width is required, the concrete must be 10cm/15cm deep and 10m/12m wide.
- Minimum concrete depth must be 10cm. If a 15cm depth is required, the concrete must be 10cm/15cm deep and 10m/12m wide.
- Minimum concrete width must be 10cm. If a 15cm width is required, the concrete must be 10cm/15cm deep and 10m/12m wide.
- Minimum concrete depth must be 10cm. If a 15cm depth is required, the concrete must be 10cm/15cm deep and 10m/12m wide.
- Minimum concrete width must be 10cm. If a 15cm width is required, the concrete must be 10cm/15cm deep and 10m/12m wide.
- Minimum concrete depth must be 10cm. If a 15cm depth is required, the concrete must be 10cm/15cm deep and 10m/12m wide.
- Minimum concrete width must be 10cm. If a 15cm width is required, the concrete must be 10cm/15cm deep and 10m/12m wide.
- Minimum concrete depth must be 10cm. If a 15cm depth is required, the concrete must be 10cm/15cm deep and 10m/12m wide.
- Minimum concrete width must be 10cm. If a 15cm width is required, the concrete must be 10cm/15cm deep and 10m/12m wide.
- Minimum concrete depth must be 10cm. If a 15cm depth is required, the concrete must be 10cm/15cm deep and 10m/12m wide.
- Minimum concrete width must be 10cm. If a 15cm width is required, the concrete must be 10cm/15cm deep and 10m/12m wide.

**CONCRETE BARRIER CURB**

ONTARIO PROVINCIAL STANDARD DRAWING Nov 2012 [Rev 2]

OPSD 600.110

DATE: 10/16/24  
 DRAWN: R.P.A.  
 CHECKED: A.M.C.  
 DESIGNED: A.M.C.  
 PLOTTED: 10/16/24