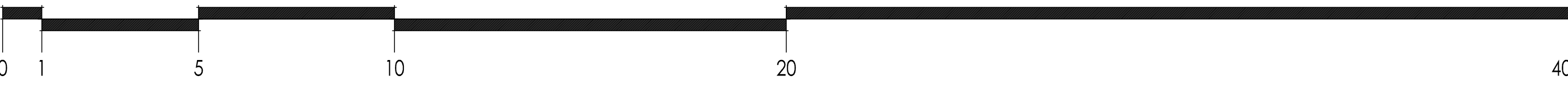


1 FIRST FLOOR PLAN
SCALE: 1 : 100



no.	issued / revision	date
5	Site Plan Approval - 1st Submission	16 October 2024
4	Revised per Client's Direction	19 August 2024
3	Client Review & Approval	12 August 2024
2	Client Meeting for Review & Approval	8 August 2024
1	Startup Coordination Meeting	6 August 2024

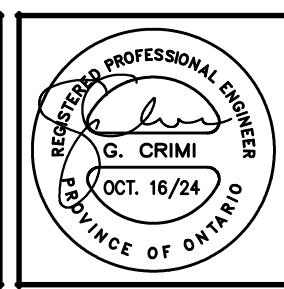
owner
EVEREST TRANSPORTATION INC.
12155 Coleraine Drive
Bolton, Ontario, L7E 3B4

project name
PROPOSED INDUSTRIAL BUILDING
12155 Coleraine Drive, Bolton, Ontario
Town of Caledon Site Plan File No. SPA-

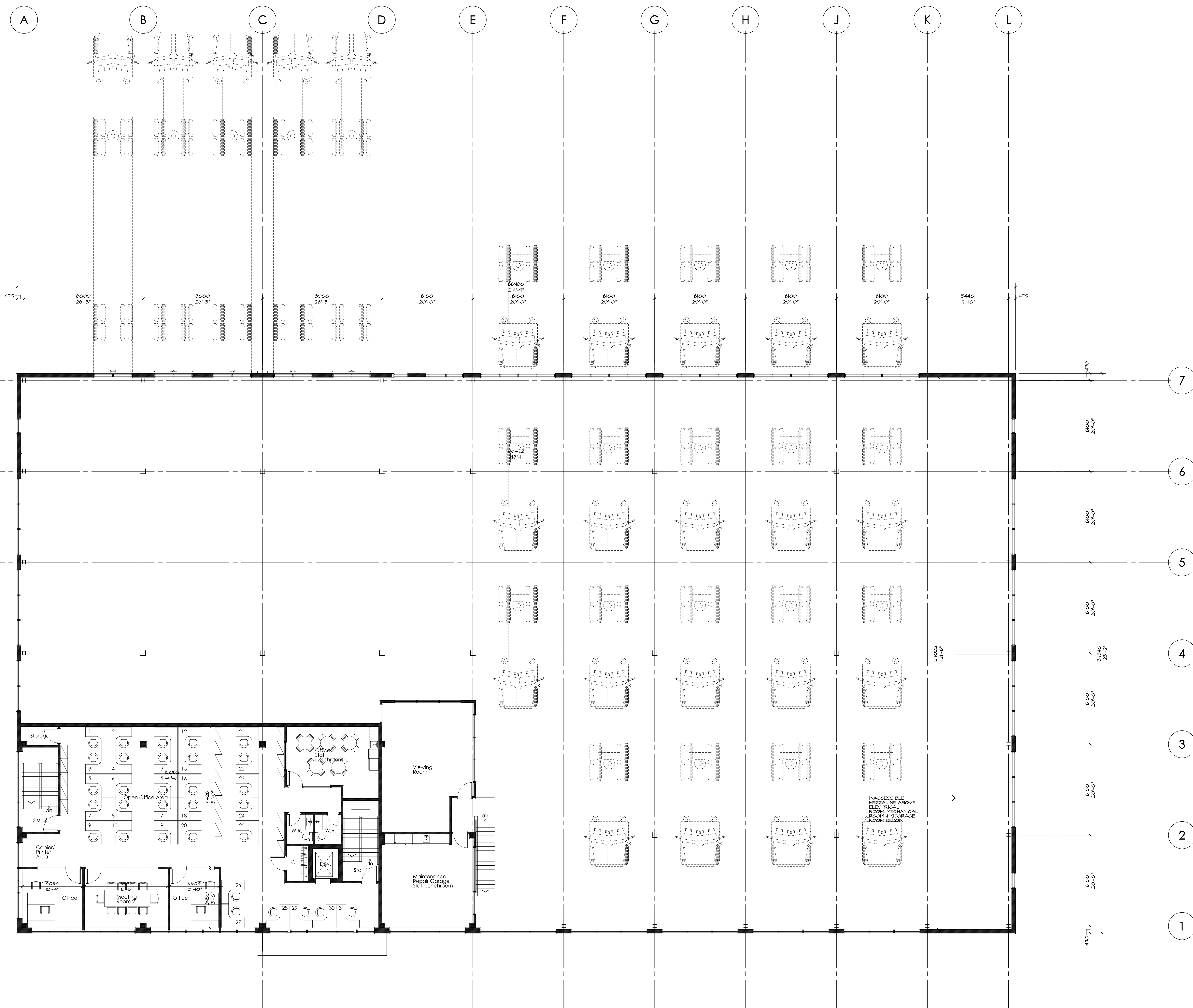
WHEELWRIGHT GROUP INC.
ENGINEERS AND CONTRACTORS
110 FENNAR DRIVE
TORONTO, ONTARIO, M9E 1M5
TEL: (416) 741-5200 FAX: (416) 741-9059

EXSEN ENGINEERING LTD.
CONSULTING ENGINEERS
111 PACIFIC AVENUE, STE. 1211
TORONTO, ONTARIO
M5P 2P2
Ph: (416) 712-0970
john@exsen.ca

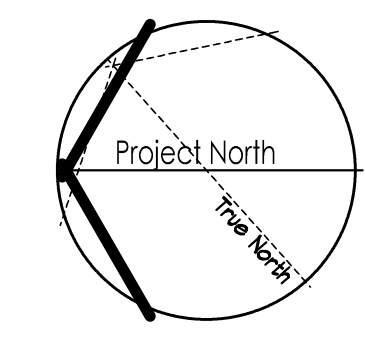
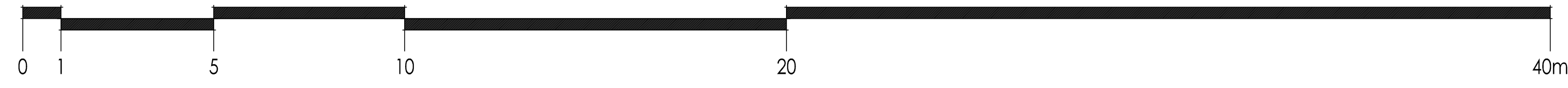
scale: 1:100
drawn: DM
date: August 2024
checked:



title: Floor Plan First Floor Level
project & drawing no.: WG-555
A-2



1 SECOND FLOOR PLAN
SCALE: 1:100



no.	issued / revision	date
5	Site Plan Approval - 1st Submission	14 October 2024
4	Revised per Client's Direction	19 August 2024
3	Client Review & Approval	12 August 2024
2	Client Meeting for Review & Approval	8 August 2024
1	Startup Coordination Meeting	4 August 2024

owner
EVEREST TRANSPORTATION INC.
12155 Coleraine Drive, Bolton, Ontario
Bolton, Ontario, L7E 3B4

project name
PROPOSED INDUSTRIAL BUILDING
12155 Coleraine Drive, Bolton, Ontario
Town of Caledon Site Plan File No. SPA-

WHEELWRIGHT GROUP INC.
ENGINEERS AND CONTRACTORS
110 FENNAR DRIVE
TORONTO, ONTARIO, M9E 1M5
TEL: (416) 741-5200 FAX: (416) 741-9059

EXSEN ENGINEERING LTD.
CONSULTING ENGINEERS
111 PACIFIC AVENUE, STE. 1211
TORONTO, ONTARIO
M5P 2P2
Ph: (416) 712-0970
john@exsen.ca

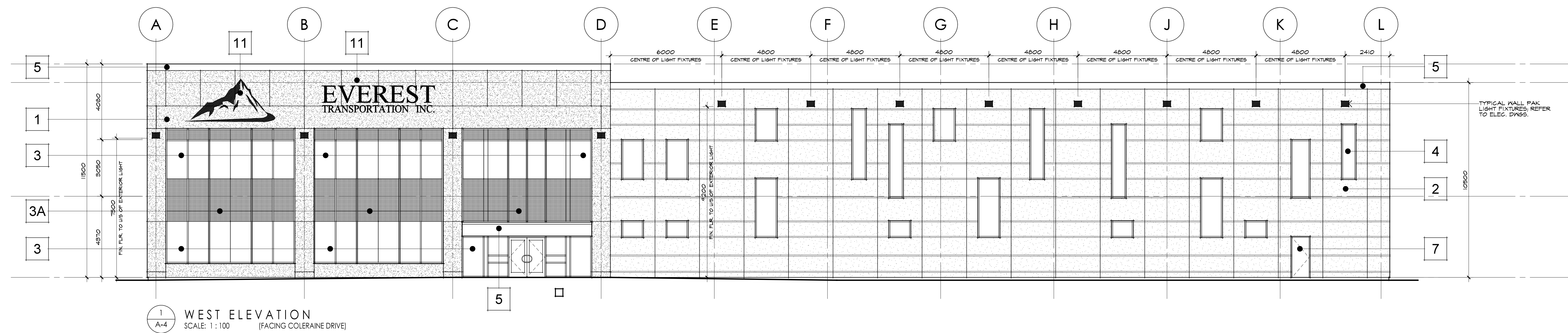
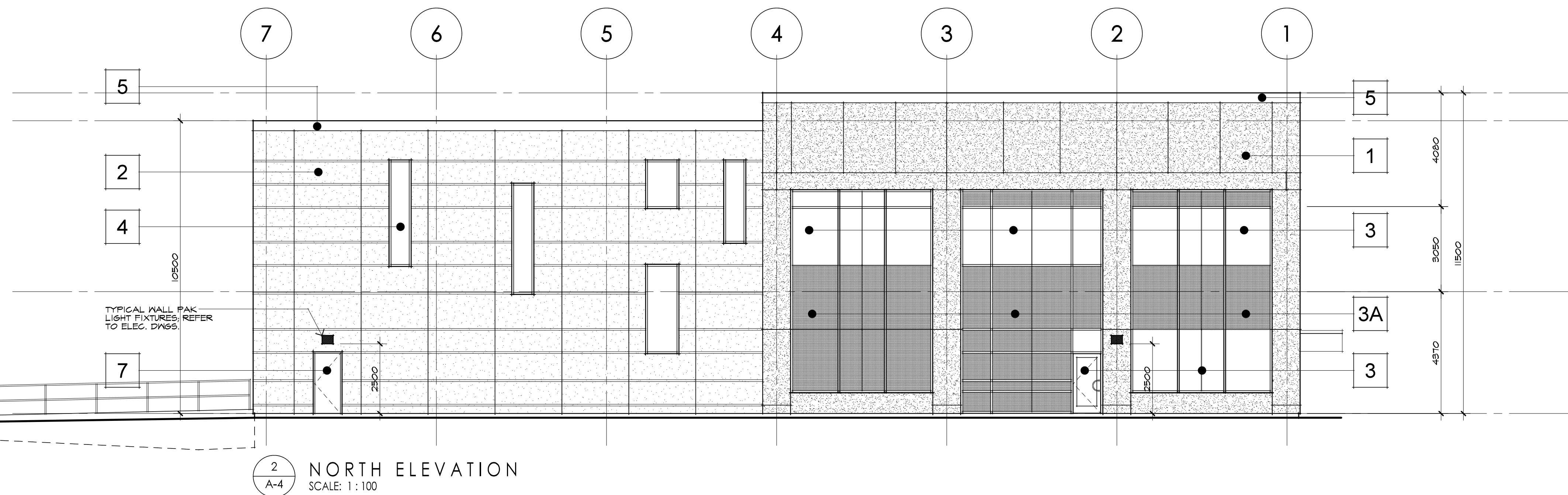
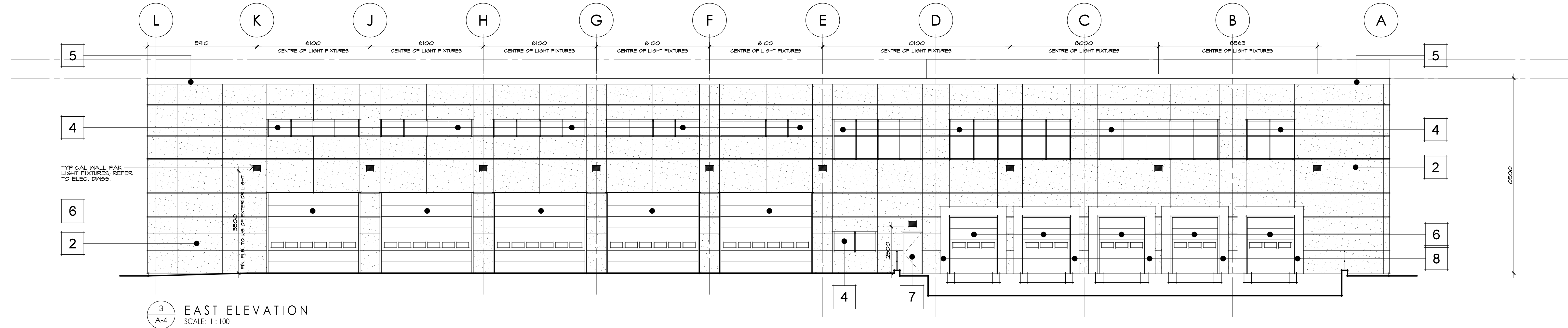
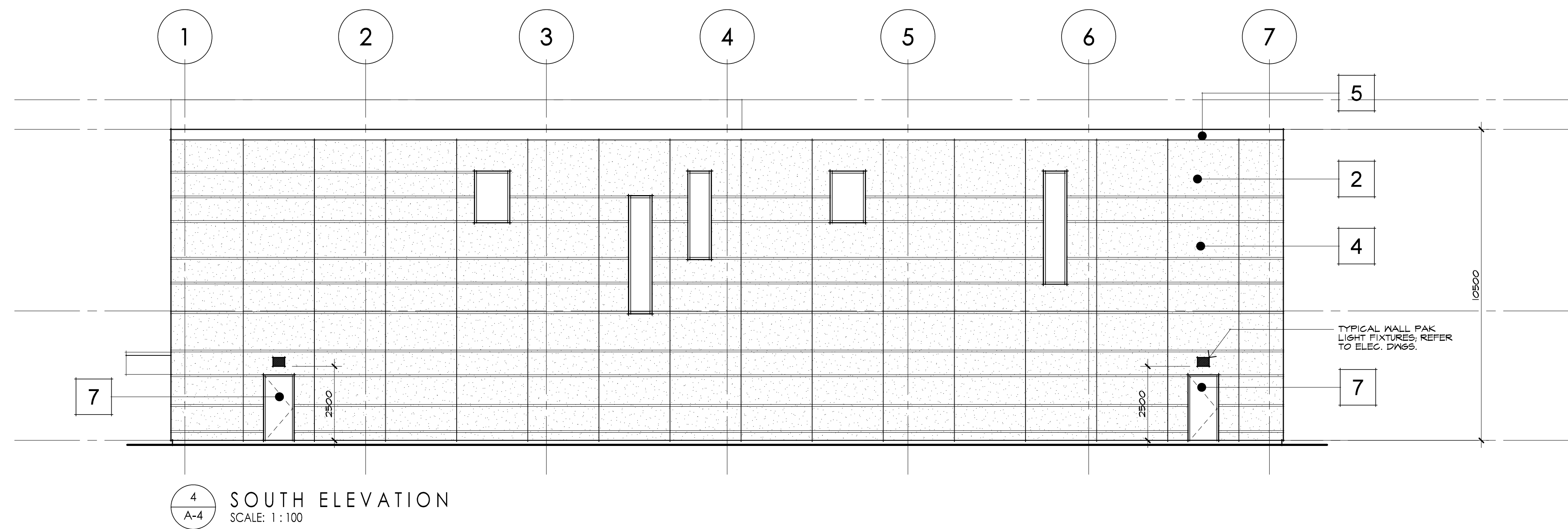
scale	1:100	
drawn	DM	
date	August 2024	
checked		

title
Floor Plan
Second Floor Level

project & drawing no.
WG-555
A-3

Exterior Finishes Legend

- | | | |
|--|--|---|
| <p>1 PRECAST CONCRETE WALL PANELS (Office Area) Smooth Face Reveal Pattern Cos Cob Stonewall Grey 1483 (Benjamin Moore Colour) or equal Samples to be Submitted at a Later Date</p> <p>2 PRECAST CONCRETE WALL PANELS (Plant Area) Smooth Face Reveal Pattern Museum Piece CSP-40 (Benjamin Moore Colour) or equal Samples to be Submitted at a Later Date</p> <p>3 ALUMICOR ALUMINUM CURTAIN WALL, WINDOWS & DOOR ENTRANCES-OFFICE AREA Charcoal Gray (XP) LT605-70 Aluminum Frames PPG Vitro Graylite II Thermal Sealed Glass Units w/ Fritted Glass Areas for Bird Friendly Surfaces as required Samples to be Submitted at a Later Date</p> <p>3A PPG Vitro GreyLite II Thermal Sealed Glass Spandrel Units with Insulated Aluminum Back Panel</p> | <p>4 ALUMICOR ALUMINUM CURTAIN WALL WINDOWS PLANT AREA Slate Gray (WP) LT604-70 Aluminum Frames PPG Vitro Graylite II Thermal Sealed Glass Units w/ Fritted Glass Areas for Bird Friendly Surfaces as required Samples to be Submitted at a Later Date</p> <p>5 METAL CAP & FASCIA FLASHINGS at Precast Wall Panels: 350mm High METAL ENTRANCE CANOPY & SOFFIT "CHARCOAL" QC28306 by AGWAY METALS or equal. Samples to be Submitted at a Later Date</p> <p>6 OVERHEAD DOORS "Richards Wilcox ThermoLite" Series With 1 Row of Glazed Units or equal. Charcoal Grey QC7989 Finish</p> <p>7 HOLLOW METAL EXIT DOORS Hollow Metal Doors & Frames Colour to match "CHARCOAL" QC28306</p> | <p>8 DOCK BUMPERS, LEVELLERS & DOCK SEALS Prefabricated Dock Levelers, Seals & Bumpers at each Loading Door</p> <p>9 BARRIER FREE PARKING SIGNS Standard metal sign & galvanized post for barrier free parking spaces as per Town of Caledon Standard. Set sign posts within concrete sidewalk and centre sign on centre of each parking space. Type "A" spaces to also be identified as "Van Accessible".</p> <p>10 FIRE ROUTE SIGNS Standard metal sign & galvanized post for identification of fire route as per Town of Caledon By-Law 2015-058, Schedule "M". Set sign posts within concrete sidewalk as noted on Site Plan.</p> <p>11 Surface Mounted Signage on Architectural Precast Panels: Company Logo Signage</p> |
|--|--|---|



no.	issued / revision	date
2	Site Plan Approval - 1st Submission	14 October 2024
1	Client Review & Approval	12 September 2024

owner
EVEREST TRANSPORTATION INC.
12155 Coleraine Drive, Bolton, Ontario, L7E 3B4

project name
PROPOSED INDUSTRIAL BUILDING
12155 Coleraine Drive, Bolton, Ontario
Town of Caledon Site Plan File No. SPA-

WHEELWRIGHT GROUP INC.
ENGINEERS AND CONTRACTORS
110 FENNAR DRIVE
TORONTO, ONTARIO, M9E 1M5
TEL: (416) 741-5200 FAX: (416) 741-9059

EXSEN ENGINEERING LTD.
CONSULTING ENGINEERS
111 PACIFIC AVENUE, STE. 1211
TORONTO, ONTARIO
M5P 2P2
Ph: (416) 712-0970
info@exsen.ca

scale: 1:100
drawn: DM
date: August 2024
checked:

title: Elevations
project & drawing no.: WG-555
A-4