

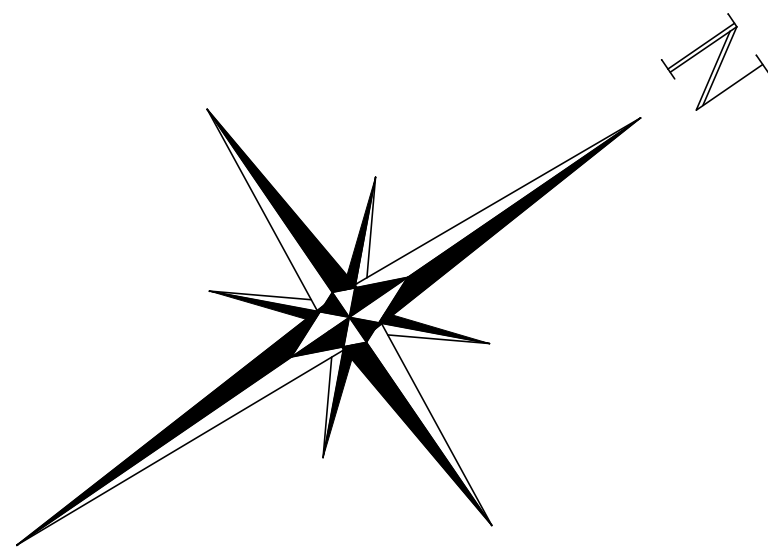
PLAN OF SURVEY OF
PART OF LOT 1
CONCESSION 1
GEOGRAPHIC TOWNSHIP OF ALBION
TOWN OF CALEDON
REGIONAL MUNICIPALITY OF PEEL

DAVID J. PESCE SURVEYING

SCALE 1:750

METRIC

DISTANCES SHOWN ON THIS
PLAN ARE IN METRES AND
CAN BE CONVERTED TO FEET
BY DIVIDING BY 0.3048



I REQUIRE THIS PLAN
TO BE DEPOSITED UNDER
THE LAND TITLES ACT

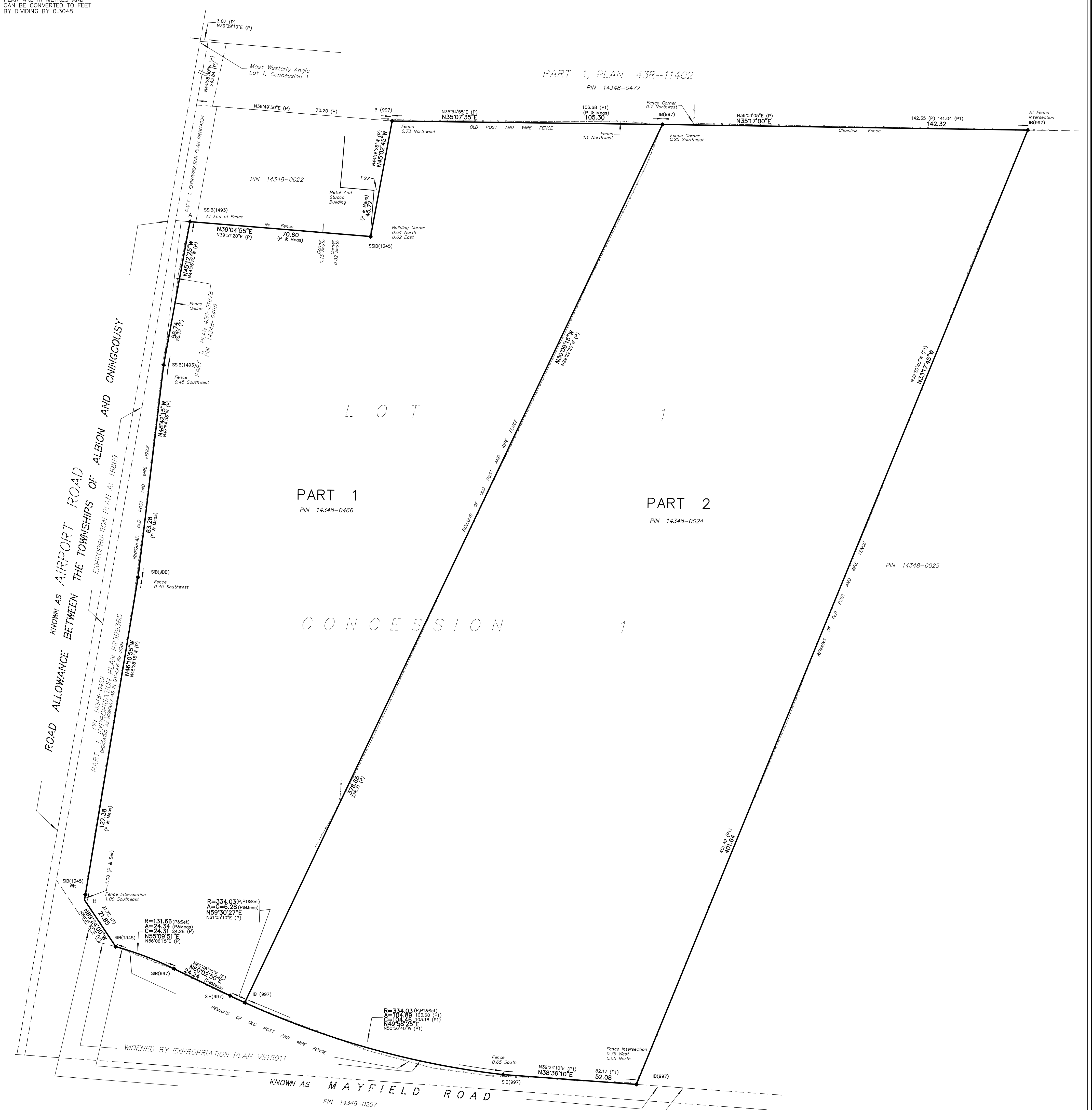
PLAN 43R--
RECEIVED AND DEPOSITED
DATE

DATE

LAND REGISTRAR FOR THE
LAND TITLES DIVISION OF PEEL
REGION (No. 43)

DAVID J. PESCE B.Sc.
ONTARIO LAND SURVEYOR

SCHEDULE		ALL OF PIN	AREA
PART	PART OF LOT CONCESSION		
1	1	14348-0466	3,8214 Ha
2	1	14348-0024	5,6103 Ha



BEARING NOTE
BEARINGS ARE UTM GRID BEARINGS, DERIVED FROM GPS OBSERVATIONS
AND ARE REFERRED TO THE UTM PROJECTION, ZONE 17, NAD83 (CSRS 1997) ADJUSTMENT
DISTANCES SHOWN ON THIS PLAN ARE ADJUSTED GROUND DISTANCES AND CAN BE
CONVERTED TO UTM GRID DISTANCES BY MULTIPLYING BY A COMBINED SCALE
FACTOR OF 0.999694

UTM COORDINATES		
POINT	NORTHING	EASTING
A	4849654.66	599550.56
B	4849471.60	599745.24

THESE COORDINATE VALUES COMPLY WITH SECTION 14(2) OREG 216/10
THESE COORDINATES CANNOT, IN THEMSELVES, BE USED TO RE-ESTABLISH
THE CORNERS OR BOUNDARIES SHOWN ON THIS PLAN

SURVEYOR'S CERTIFICATE

I CERTIFY THAT :

1.) THIS SURVEY AND PLAN ARE CORRECT AND IN ACCORDANCE WITH THE
SURVEYS ACT, THE SURVEYORS ACT AND THE LAND TITLES ACT,
AND THE REGULATIONS MADE UNDER THEM.

2.) THE SURVEY WAS COMPLETED ON THE _____ DAY OF JULY 2011

DATE _____ DAVID J. PESCE B.Sc.
ONTARIO LAND SURVEYOR

BEARING COMPARISONS
FOR THE PURPOSE OF BEARING COMPARISONS TO PREVIOUS PLANS
PREVIOUS SURVEYS HAVE BEEN ROTATED TO UTM BEARINGS BY THE
ANGLES LISTED BELOW

PLAN	ROTATION

DAVID J. PESCE SURVEYING
PROFESSIONAL LAND SURVEYOR

43 McCAGUE CRESCENT, ALLISTON, ONTARIO, L9R 1A7
PHONE (705) 434-9475, FAX (705) 434-0156
email david@davidjpescesurveying.com

EXAMINED BY DJP OLS
DRAWN BY CALCD BY
PROJECT 11-719(RP)