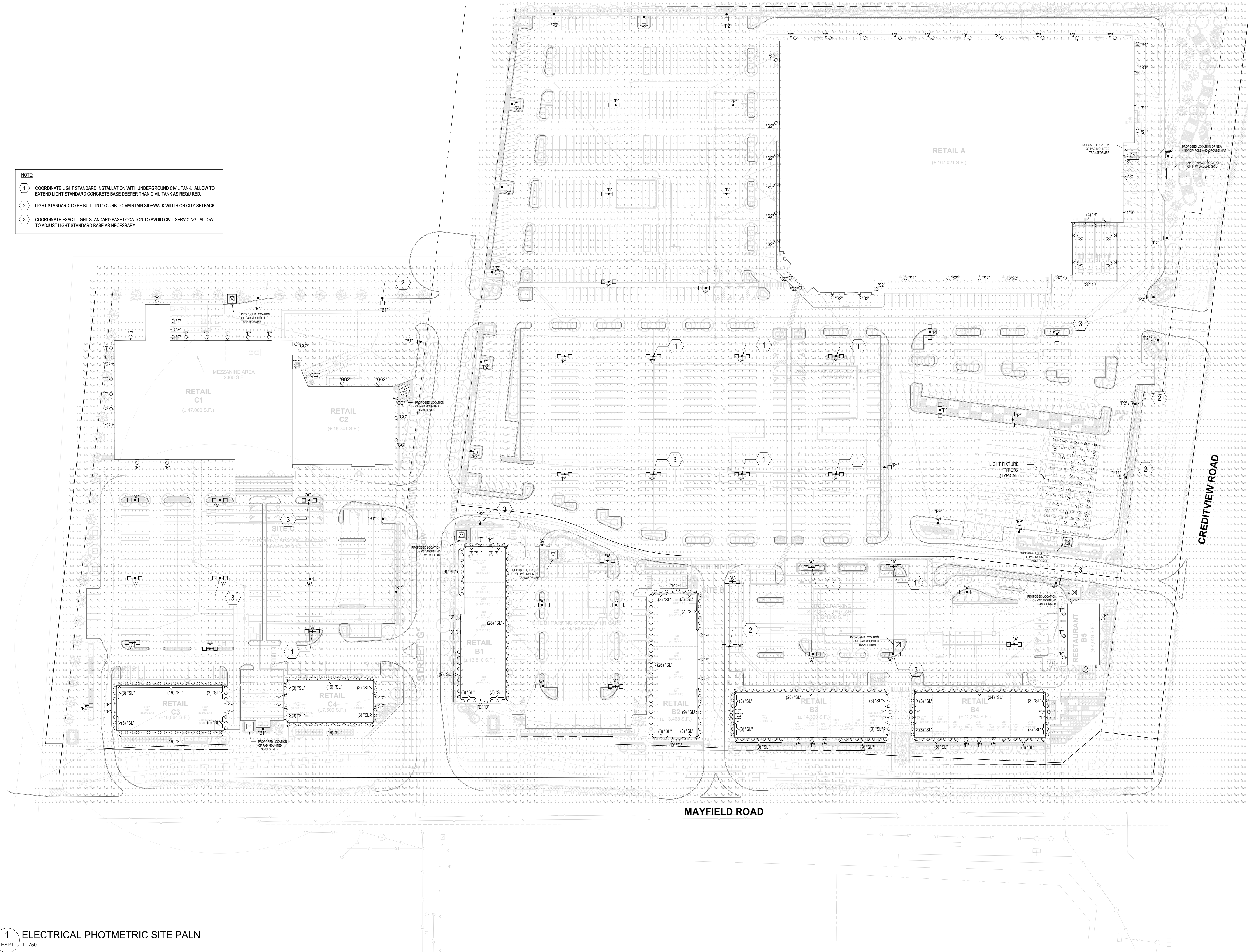


THESE DRAWINGS ARE NOT TO BE SCALED FOR SITE DIMENSIONS. THE CONTRACTOR MUST CHECK AND VERIFY ALL DIMENSIONS AND SITE CONDITIONS AT THE PROJECT SITE AND MUST REPORT ANY DISCREPANCIES TO THE CONSULTANTS BEFORE PROCEEDING WITH THE WORK.
COORDINATE ALL OF THE WORK WITH OTHER TRADES & THE LAYOUTS SHOWN ON THE OTHER CONSULTANTS AND THE ARCHITECTURAL DRAWINGS (WHERE APPLICABLE). REFER TO THE APPROPRIATE CONSULTANT DRAWINGS BEFORE PROCEEDING WITH THE WORK FOR ANY COORDINATION REQUIREMENTS.
THIS CONTRACTOR MUST CONFORM TO ALL APPLICABLE CODES AND STANDARD REQUIREMENTS OF THE AUTHORITIES HAVING JURISDICTION. THE CONTRACTOR SHALL WORK FROM DRAWINGS MARKED "ISSUED FOR CONSTRUCTION" AND SHALL INSURE LATEST ISSUED INSTRUCTIONS ARE FOLLOWED. THIS CONTRACTOR SHALL ASSUME FULL RESPONSIBILITY AND BEAR COSTS FOR ANY CORRECTIONS OR DAMAGES RESULTING FROM THEIR WORK.

- NOTE:**
- COORDINATE LIGHT STANDARD INSTALLATION WITH UNDERGROUND CIVIL TANK. ALLOW TO EXTEND LIGHT STANDARD CONCRETE BASE DEEPER THAN CIVIL TANK AS REQUIRED.
 - LIGHT STANDARD TO BE BUILT INTO CURB TO MAINTAIN SIDEWALK WIDTH OR CITY SETBACK.
 - COORDINATE EXACT LIGHT STANDARD BASE LOCATION TO AVOID CIVIL SERVICES. ALLOW TO ADJUST LIGHT STANDARD BASE AS NECESSARY.



#	DATE	DESCRIPTION	BY
16	2026-03-19	ISSUED FOR SPA	BK
15	2026-03-18	ISSUED FOR COORDINATION	BK
14	2026-03-17	ISSUED FOR COORDINATION	BK
13	2026-03-11	ISSUED FOR COORDINATION	BK
12	2026-03-09	ISSUED FOR COORDINATION	BK
11	2026-03-02	ISSUED FOR COORDINATION	BK
10	2025-08-23	ISSUED FOR COORDINATION	BK
9	2025-08-15	ISSUED FOR SPA	BK
8	2025-08-18	ISSUED FOR REVIEW	BK
7	2025-07-31	ISSUED FOR COORDINATION	BK
6	2025-07-17	ISSUED FOR COORDINATION	BK
5	2025-07-04	ISSUED FOR COORDINATION	BK
4	2025-04-09	ISSUED TO UTILITY	BK
3	2025-02-05	ISSUED FOR REVIEW	BK
2	2024-10-16	ISSUED FOR SPA	BK
1	2024-10-04	ISSUED FOR COORDINATION	BK
#	DATE	DESCRIPTION	BY

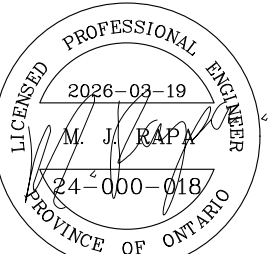
fieldgate

PROJECT
MAYFIELD ROAD & CREDITVIEW ROAD

CALEDON, ON

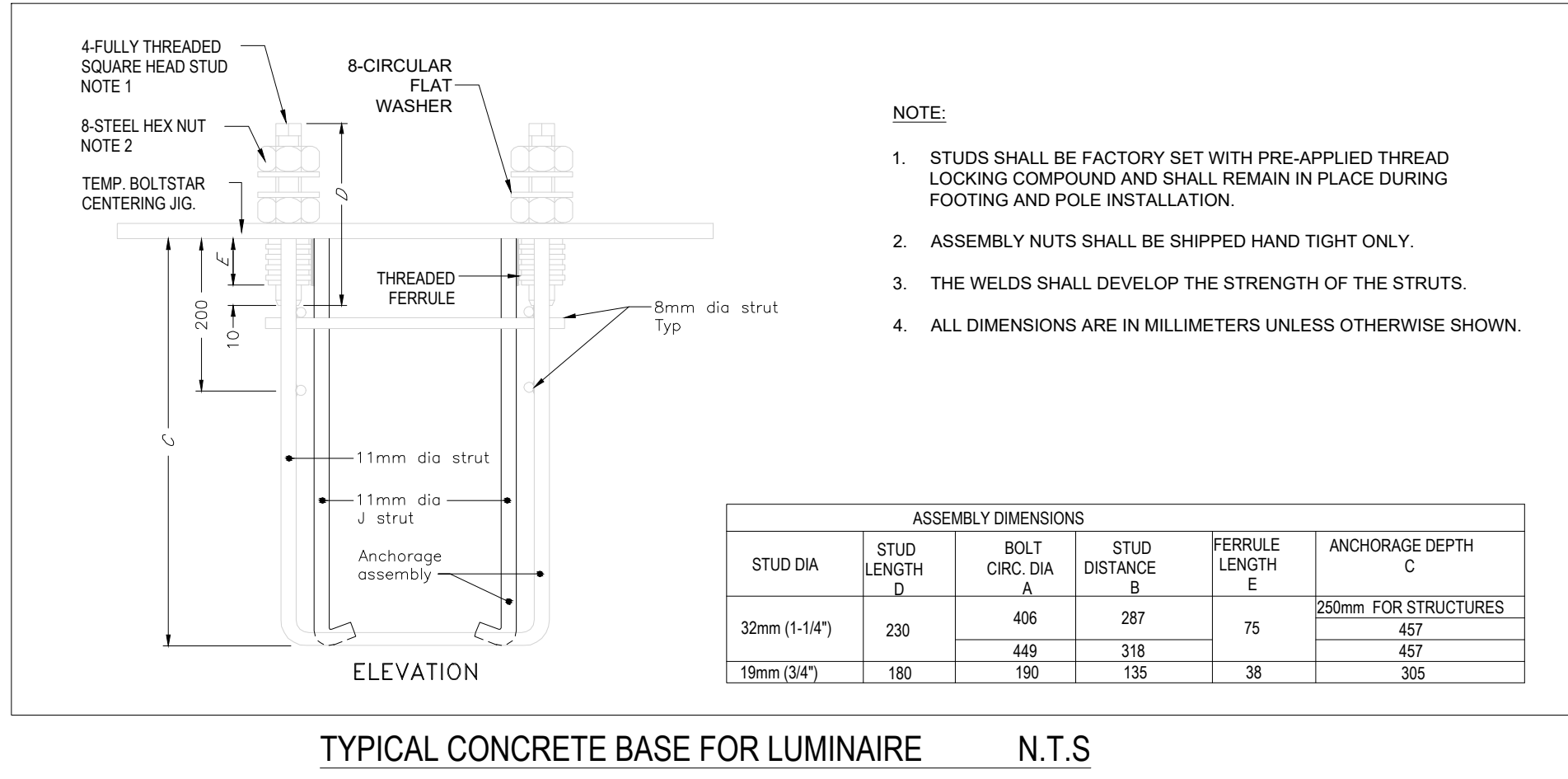
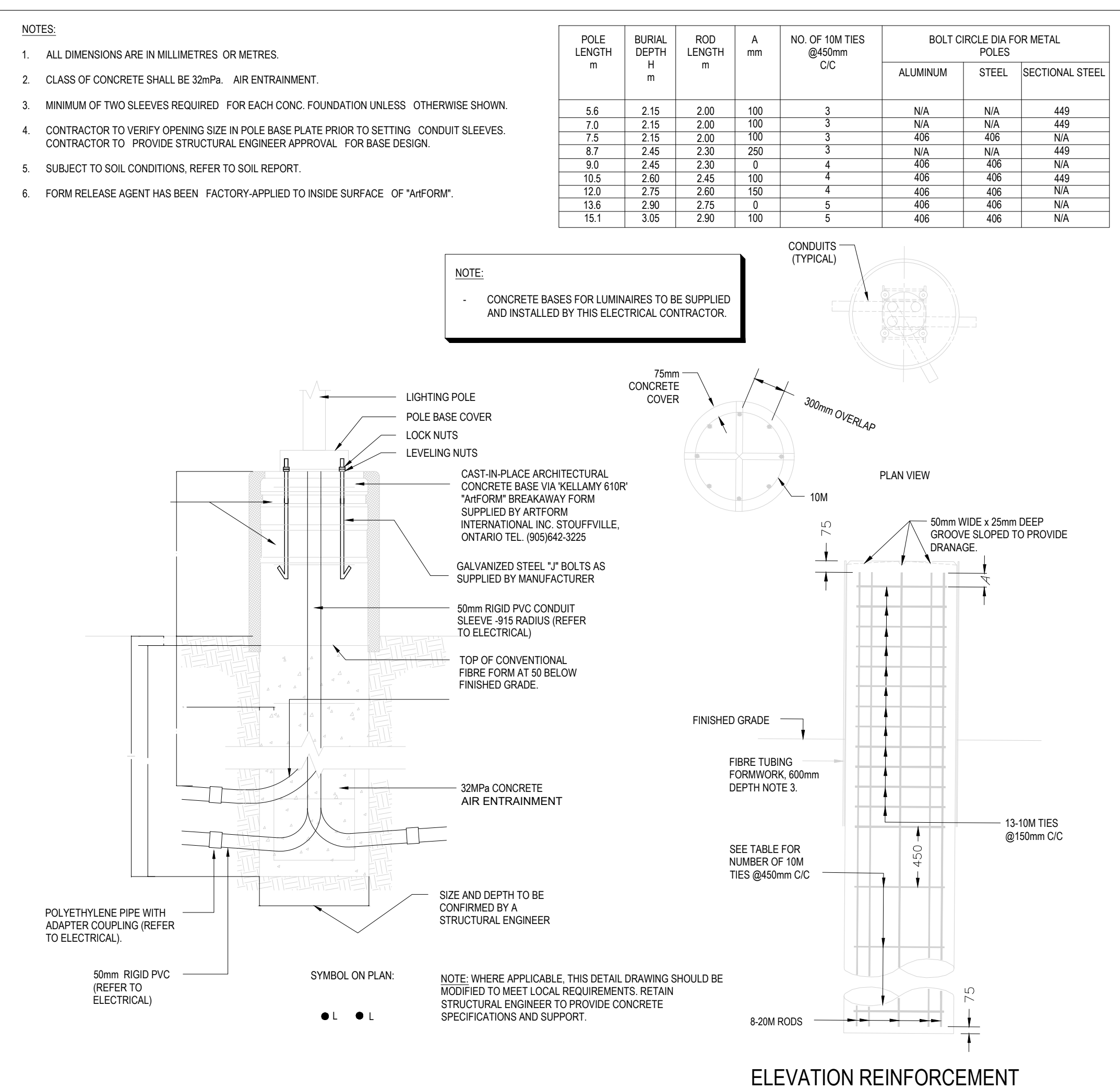
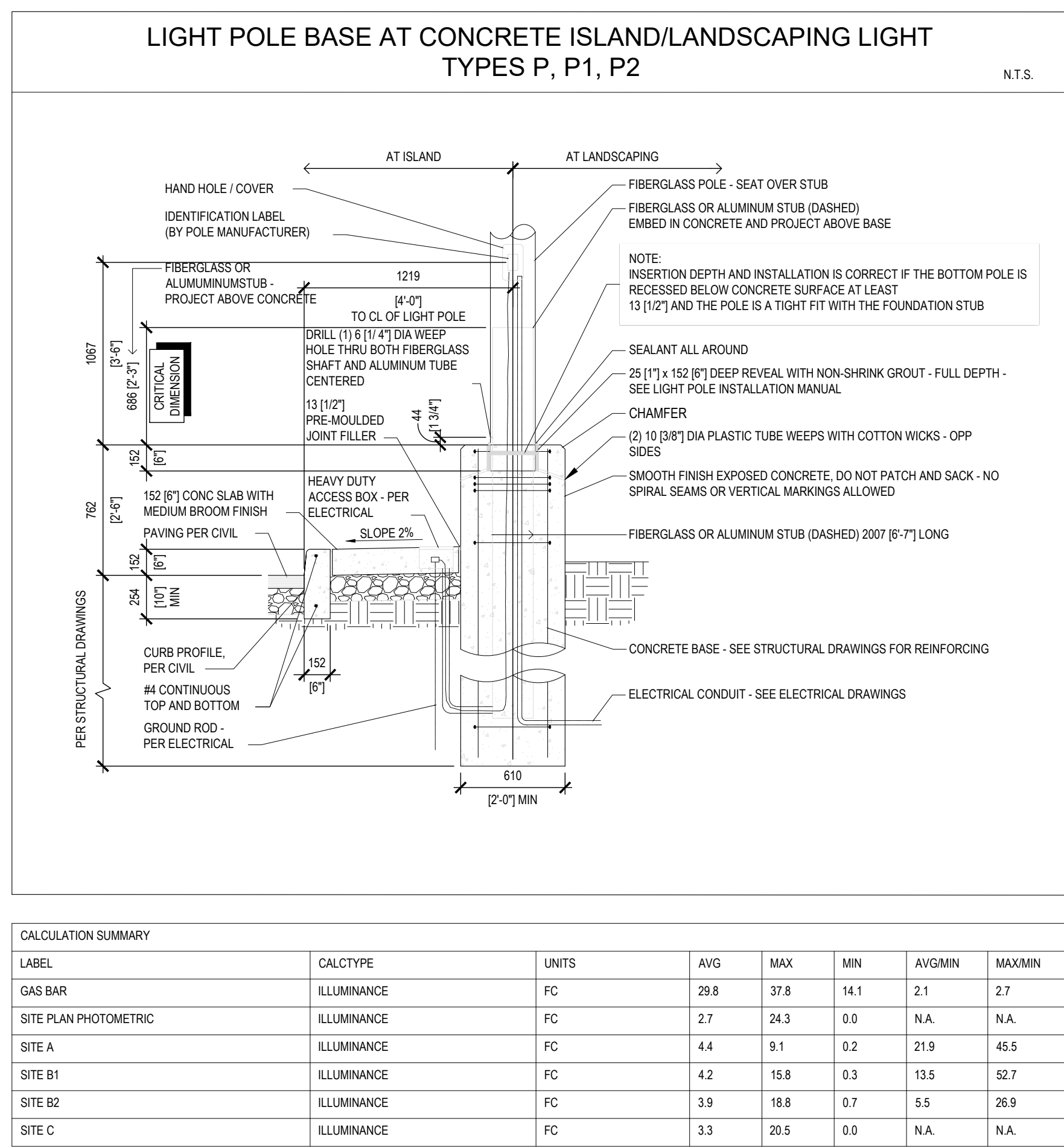
DRAWING
**ELECTRICAL
PHOTOMETRIC
SITE PLAN**

PROJECT NO:
24-000-018
PROJECT DATE:
2024-05-09
DRAWN BY:
JL
CHECKED BY:
BK & DF
SCALE:
AS SHOWN



DRAWING NO. **ESP1** REV

LIGHT FIXTURE SCHEDULE	
TYPE	DESCRIPTION
"A"	LUMINAIRE/POLE ASSEMBLY CONSISTING OF A DOUBLE (2) LED LUMINAIRES WITH A TYPE V WIDE DISTRIBUTION PATTERN, 347V OUTDOOR USE BALLAST ON A 22"-0" SQUARE STEEL POLE WITH POLE BASE COVER ON 36" HIGH CONCRETE BASE (DIAMETER AS REQUIRED). COLOUR OF FINISH OF POLE/HEAD TO ARCHITECT/OWNER SELECTION. FIXTURE TO HAVE FLAT LENS, BE FULL CUT OFF/DARK-SKY FRIENDLY AND CONTROLLED BY ASTRONOMICAL TIMECLOCK. GARDCO ECOFORM SMALL BY SIGNIFY CAT# ECF-S-64L-1A-NW-G2-AR-5W-347-CC
"B1"	LUMINAIRE/POLE ASSEMBLY CONSISTING OF A SINGLE (1) LED LUMINAIRES WITH A TYPE III DISTRIBUTION PATTERN, INTERNAL HOUSE SIDE SHIELD, 347V OUTDOOR USE BALLAST ON A 22"-0" SQUARE STEEL POLE WITH POLE BASE COVER ON 36" HIGH CONCRETE BASE (DIAMETER AS REQUIRED). COLOUR OF FINISH OF POLE/HEAD TO ARCHITECT/OWNER SELECTION. FIXTURE TO HAVE FLAT LENS, BE FULL CUT OFF/DARK-SKY FRIENDLY AND CONTROLLED BY ASTRONOMICAL TIMECLOCK. GARDCO ECOFORM SMALL BY SIGNIFY CAT# ECF-S-32L-900-NW-G2-AR-3-347-HIS-CC
"B2"	LUMINAIRE/POLE ASSEMBLY CONSISTING OF A SINGLE (1) LED LUMINAIRES WITH A TYPE III DISTRIBUTION PATTERN, 347V OUTDOOR USE BALLAST ON A 22"-0" SQUARE STEEL POLE WITH POLE BASE COVER ON 36" HIGH CONCRETE BASE (DIAMETER AS REQUIRED). COLOUR OF FINISH OF POLE/HEAD TO ARCHITECT/OWNER SELECTION. FIXTURE TO HAVE FLAT LENS, BE FULL CUT OFF/DARK-SKY FRIENDLY AND CONTROLLED BY ASTRONOMICAL TIMECLOCK. GARDCO ECOFORM SMALL BY SIGNIFY CAT# ECF-S-64L-900-NW-G2-AR-3-347-CC
"B4"	LUMINAIRE/POLE ASSEMBLY CONSISTING OF A SINGLE (1) LED LUMINAIRES WITH A TYPE II DISTRIBUTION PATTERN, INTERNAL HOUSE SIDE SHIELD, 347V OUTDOOR USE BALLAST ON A 22"-0" SQUARE STEEL POLE WITH POLE BASE COVER ON 36" HIGH CONCRETE BASE (DIAMETER AS REQUIRED). COLOUR OF FINISH OF POLE/HEAD TO ARCHITECT/OWNER SELECTION. FIXTURE TO HAVE FLAT LENS, BE FULL CUT OFF/DARK-SKY FRIENDLY AND CONTROLLED BY ASTRONOMICAL TIMECLOCK. GARDCO ECOFORM SMALL BY SIGNIFY CAT# ECF-S-32L-1.2A-NW-G2-AR-2-347-HIS-CC
D	CYLINDRICAL DOWNLIGHT DECORATIVE LIGHT FIXTURE FOR OUTDOOR USE C/W 3000K LED LAMP AND 120V BALLAST SUITABLE FOR OUTDOOR USE CUSTOM COLOR TO ARCHITECT'S SELECTION. FIXTURE TO BE MOUNTED AT 11' A.F.F. SOLERA CAT# SRBK-6X15-14W-LED-4000K-UNV-WM-CG-NB-IP65-CC
D2	EXTERIOR WALL MOUNTED FIXTURE C/W 3000K LED LAMP AND 120V BALLAST SUITABLE FOR OUTDOOR USE. COLOR OF FIXTURE TO ARCHITECT'S SELECTION. FIXTURE TO BE MOUNTED AT 17' A.F.F. GARDCO ECOFORM SMALL BY SIGNIFY CAT# ECF-S-32L-700-WV-G2-WS-4-120-CC
F	EXTERIOR WALL MOUNTED FIXTURE C/W 3000K LED LAMP AND 120V BALLAST SUITABLE FOR OUTDOOR USE. COLOR OF FIXTURE TO ARCHITECT'S SELECTION. FIXTURE TO BE MOUNTED AT 11' A.F.F. H.E. WILLIAMS CAT# VWM-H-LED17846-CC-120
G	LED GAS BAR CANOPY FIXTURE. FIXTURE TO BE MOUNTED AT 19' A.F.F. CREE LIGHTING CAT. #: CPY250-B-DM-F-B-UL-WH.
GG	LARGE EXTERIOR WALL MOUNTED FIXTURE C/W LED LAMP AND 347V DRIVER SUITABLE FOR OUTDOOR USE. COLOR OF FIXTURE TO ARCHITECT'S SELECTION. FIXTURE TO BE MOUNTED AT 12' A.F.F. COOPER : LUMARK XTOR8B-W-BK-347
GG2	LARGE EXTERIOR WALL MOUNTED FIXTURE C/W LED LAMP AND 347V DRIVER SUITABLE FOR OUTDOOR USE. COLOR OF FIXTURE TO ARCHITECT'S SELECTION. FIXTURE TO BE MOUNTED AT 14' A.F.F. COOPER : LUMARK XTOR12B-W-BK-347
"P"	COOPER GALN GALLEON II GLEON-SABB-740-9(347V)-5WQ-BZ, 334W TYPE 5 DISTRIBUTION, FIBERGLASS POLE 27" ABOVE GRADE, WITH 36" BASE. FIXTURE TO HAVE FLAT LENS, BE FULL CUT OFF/DARK-SKY FRIENDLY AND CONTROLLED BY ASTRONOMICAL TIMECLOCK.
"P1"	COOPER GALN GALLEON II GLEON-SABB-740-9(347V)-T3-BZ, 334W TYPE 3 DISTRIBUTION, FIBERGLASS POLE 27" ABOVE GRADE, WITH 36" BASE. FIXTURE TO HAVE FLAT LENS, BE FULL CUT OFF/DARK-SKY FRIENDLY AND CONTROLLED BY ASTRONOMICAL TIMECLOCK.
"P11"	COOPER GALN GALLEON II GLEON-SABB-740-9(347V)-T3-BZ-HSS, 334W TYPE 3 DISTRIBUTION, INTERNAL HOUSE SIDE SHIELD, FIBERGLASS POLE 27" ABOVE GRADE, WITH 36" BASE. FIXTURE TO HAVE FLAT LENS, BE FULL CUT OFF/DARK-SKY FRIENDLY AND CONTROLLED BY ASTRONOMICAL TIMECLOCK.
"P2"	COOPER GALN GALLEON II GLEON-SABB-740-9(347V)-SL4-HSS-BZ, 334W TYPE 4 DISTRIBUTION, FIBERGLASS POLE 27" ABOVE GRADE, WITH 36" BASE. FIXTURE TO HAVE FLAT LENS, BE FULL CUT OFF/DARK-SKY FRIENDLY AND CONTROLLED BY ASTRONOMICAL TIMECLOCK.
"PP"	COOPER GALN GALLEON II GLEON-SABB-740-1(120V)-5MQ-BZ, 334W TYPE 5 SQUARE MEDIUM DISTRIBUTION, FIBERGLASS POLE 27" ABOVE GRADE, WITH 36" BASE. FIXTURE TO HAVE FLAT LENS, BE FULL CUT OFF/DARK-SKY FRIENDLY AND CONTROLLED BY ASTRONOMICAL TIMECLOCK.
S	LED WALL MOUNTED FIXTURE. FIXTURE TO BE MOUNTED AT 19' A.F.F. LITHONIA LIGHTING CAT. #: DSXW2 LED P5 40K T2M 347 DDBXD CSA.
SL	4" ROUND SOFFIT LIGHT SUITABLE FOR OUTDOOR USE C/W 120V BALLAST AND WET LOCATION TRIM. REFLECTOR FINISH TO ARCHITECTS SELECTION. FIXTURE TO BE MOUNTED AT 14' A.F.F. H.E. WILLIAMS: 4DR-LT-20/840-DIM-UNV-R-M-WH-WET/CC
S1	LED WALL MOUNTED FIXTURE. FIXTURE TO BE MOUNTED AT 14' A.F.F. LITHONIA LIGHTING CAT. #: DSXW2 LED P5 40K T2M 347 DDBXD CSA.
S2	LED WALL MOUNTED FIXTURE. FIXTURE TO BE MOUNTED AT 19' A.F.F. LITHONIA LIGHTING CAT. #: DSXW2 LED P5 40K T2M 347 DDBXD CSA.



HAMMERSCHLAG & JOFFE INC.

43 Lesmill Road Toronto,
Ontario Canada M3B 2T8
T: (416) 444.9263
F: (416) 444.1463

THESE DRAWINGS ARE NOT TO BE SCALED FOR SITE DIMENSIONS. THE CONTRACTOR MUST CHECK AND VERIFY ALL DIMENSIONS AND SITE CONDITIONS AT THE PROJECT SITE AND MUST REPORT ANY DISCREPANCIES TO THE CONSULTANTS BEFORE PROCEEDING WITH THE WORK.

COORDINATE ALL OF THE WORK WITH OTHER TRADES & THE LAYOUTS SHOWN ON THE OTHER CONSULTANTS AND THE ARCHITECTURAL DRAWINGS (WHERE APPLICABLE). REFER TO THE APPROPRIATE CONSULTANT DRAWINGS BEFORE PROCEEDING WITH THE WORK FOR ANY COORDINATION REQUIREMENTS.

THIS CONTRACTOR MUST CONFORM TO ALL APPLICABLE CODES AND STANDARD REQUIREMENTS OF THE AUTHORITIES HAVING JURISDICTION. THE CONTRACTOR SHALL WORK FROM DRAWINGS MARKED "ISSUED FOR CONSTRUCTION" AND SHALL ENSURE LATEST ISSUED INSTRUCTIONS ARE FOLLOWED. THIS CONTRACTOR SHALL ASSUME FULL RESPONSIBILITY AND BEAR COSTS FOR ANY CORRECTIONS OR DAMAGES RESULTING FROM THEIR WORK.

#	DATE	ISSUED FOR COORDINATION	BY
16	2026-03-19	ISSUED FOR SPA	BK
15	2026-03-18	ISSUED FOR COORDINATION	BK
14	2026-03-17	ISSUED FOR COORDINATION	BK
13	2026-03-11	ISSUED FOR COORDINATION	BK
12	2026-03-09	ISSUED FOR COORDINATION	BK
11	2026-03-02	ISSUED FOR COORDINATION	BK
10	2026-02-23	ISSUED FOR COORDINATION	BK
9	2025-08-15	ISSUED FOR REVIEW	BK
8	2025-08-18	ISSUED FOR REVIEW	BK
7	2025-07-31	ISSUED FOR COORDINATION	BK
6	2025-07-17	ISSUED FOR COORDINATION	BK
5	2025-07-04	ISSUED FOR COORDINATION	BK
4	2025-04-09	ISSUED TO UTILITY	BK
3	2025-02-05	ISSUED FOR REVIEW	BK
2	2024-10-16	ISSUED FOR SPA	BK
1	2024-10-04	ISSUED FOR COORDINATION	BK
#	DATE	DESCRIPTION	BY

fieldgate

PROJECT
MAYFIELD ROAD & CREDITVIEW ROAD

CALEDON, ON

DRAWING
**ELECTRICAL
DETAILS & NOTES**

PROJECT NO. 24-000-018	
PROJECT DATE 2024-05-09	
DRAWN BY JL	
CHECKED BY BK & DF	
SCALE N.T.S.	

DRAWING NO. **ESP2** REV