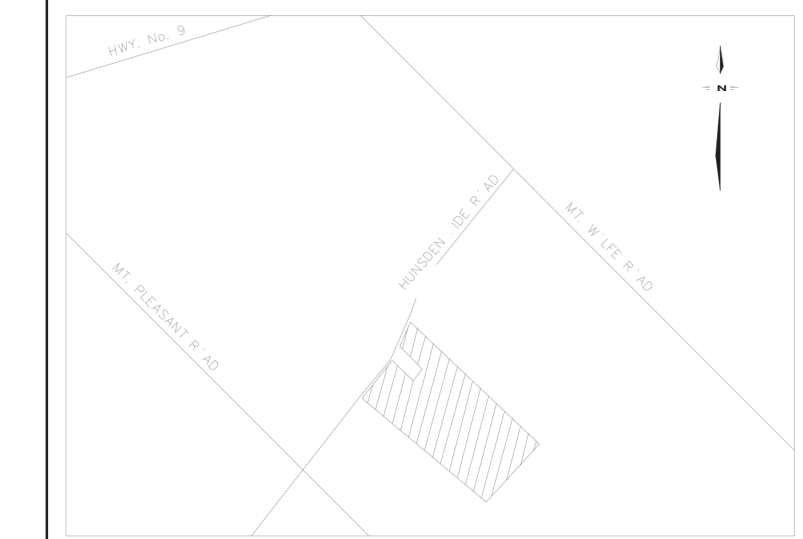
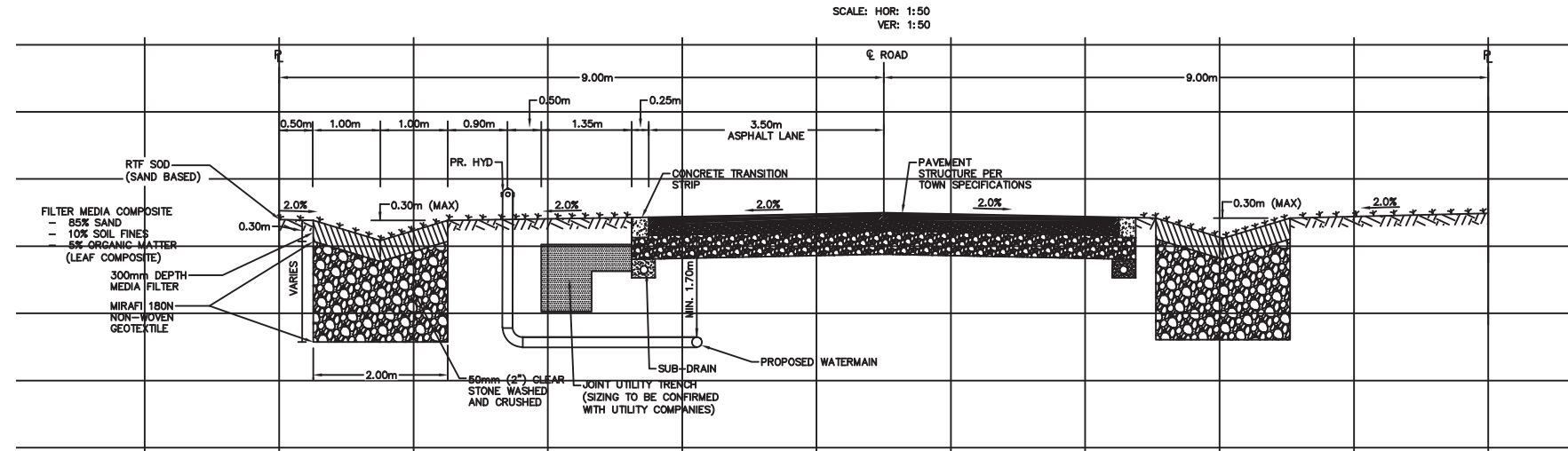


TOWN OF CALEDON  
PLANNING  
RECEIVED  
November 18, 2022



TYPICAL 18.0m R.O.W. ROAD SECTION



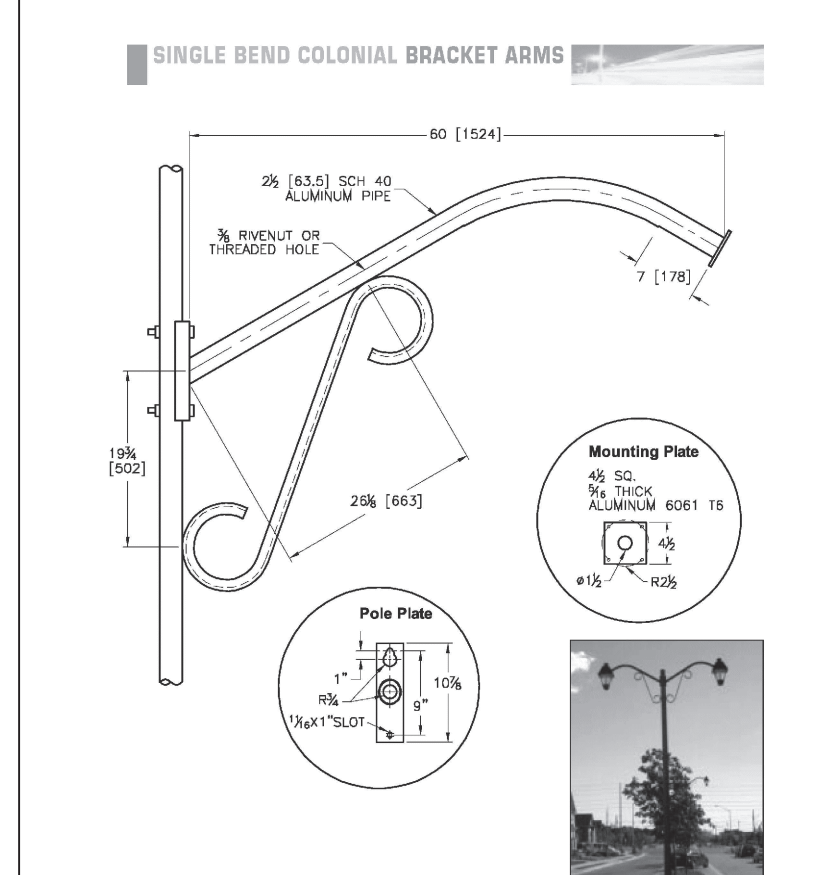
NOTE: ROW TO BE MODIFIED TO ACCOMMODATE UTILITIES ON EITHER SIDE; TO INCLUDE TRANSFORMERS, STREETLIGHTS, ETC.

**Octagonal Class B - Medium Duty Pole**

**Physical Details:**

- 9.9m (32.5') octagonal concrete prestressed and reinforced, by stress-crete cat. # E325-BPO-G-CSA style 170 C/W top cap and finished in polished midnight lace cat. # S-10 or approved equivalent
- Luminaire: 40W 120V 3000K LED decorative coach style, King or Cooper equivalent to 70W HPS. King Cat # K601D-S-PAL-III-R(SL)7030 or Cooper Cat # SLE02LEDDUSL2B-7030, C/W 7-PIN PHOTO CONTROL, MOUNTED ON A 1.5m LARGE SCROLL ARM (KA-175-L). NOTE: LUMINAIRE AND ARM TO BE FACTORY FINISHED POWDER COAT BLACK.

| Post      | Pre       | Anchor    | Embed | Post      | Embed     | Embed |
|-----------|-----------|-----------|-------|-----------|-----------|-------|
| Size      | Size      | Size      | Depth | Size      | Size      | Depth |
| 1.00x1.00 | 1.00x1.00 | 1.00x1.00 | 1.50  | 1.00x1.00 | 1.00x1.00 | 1.50  |
| 1.25x1.25 | 1.25x1.25 | 1.25x1.25 | 1.50  | 1.25x1.25 | 1.25x1.25 | 1.50  |
| 1.50x1.50 | 1.50x1.50 | 1.50x1.50 | 1.50  | 1.50x1.50 | 1.50x1.50 | 1.50  |
| 1.75x1.75 | 1.75x1.75 | 1.75x1.75 | 1.50  | 1.75x1.75 | 1.75x1.75 | 1.50  |
| 2.00x2.00 | 2.00x2.00 | 2.00x2.00 | 1.50  | 2.00x2.00 | 2.00x2.00 | 1.50  |



NOTE: Drawings are Pictorial Only  
**ALUMINUS**  
aluminus.com

**K601D COACH LANTERN - LED**

**PRODUCT SPECIFICATIONS**

| LED BEHIND   | PHOTOMETRICS  | WARRANTY   | CE CERTIFICATION  |
|--|---|--|---|
| LED luminaire uses high quality LEDs on a 100° beam spread to provide a wide area of illumination. The luminaire is designed to provide a high quality beam of light and is suitable for use in a variety of applications. | Photometric data is provided for the luminaire. The luminaire is designed to provide a high quality beam of light and is suitable for use in a variety of applications. | The luminaire is covered by a 5-year warranty. The warranty covers the luminaire and its components. The warranty is void if the luminaire is damaged, modified, or used in an unauthorized application. | The luminaire is CE certified. The luminaire meets the requirements of the CE mark. The luminaire is suitable for use in a variety of applications. |



STREETLIGHTING CIRCUITRY TO BE  
FINALIZED PENDING HYDRO PLANS.

KEY PLAN N.T.S.

**LEGEND**

STREETLIGHT POLE: 9.9m (32.5') OCTAGONAL CONCRETE PRESTRESSED AND REINFORCED, BY STRESS-CRETE CAT.# E325-BPO-G-CSA STYLE 170 C/W TOP CAP AND FINISHED IN POLISHED MIDNIGHT LACE CAT.# S-10 OR APPROVED EQUIVALENT  
LUMINAIRE: 40W 120V 3000K LED DECORATIVE COACH STYLE, KING OR COOPER EQUIVALENT TO 70W HPS. KING CAT # K601D-S-PAL-III-R(SL)7030 OR COOPER CAT # SLE02LEDDUSL2B-7030, C/W 7-PIN PHOTO CONTROL, MOUNTED ON A 1.5m LARGE SCROLL ARM (KA-175-L). NOTE: LUMINAIRE AND ARM TO BE FACTORY FINISHED POWDER COAT BLACK.

PB HANDHOLE POLE BREAKER  
15AMP 120V STREETLIGHT SUPPLY DISCONNECT BREAKER LOCATED IN HANDHOLE.

UNDERGROUND STREETLIGHT CABLE: 2#6R/W C/W 1#6 R/W GND. CABLE INSTALLED IN 50mm PVC TYPE 2 DIRECT BURIED DUCT IN COMPLETE ACCORDANCE WITH E.S.A. STANDARDS & SPECIFICATIONS, FUSE WITHIN EACH POLE HANDHOLE.

HYDRO ONE TRANSFORMER.

ROAD CROSSING: TYPE 2 PVC DIRECT BURIED DUCT. QUANTITY AND SIZE AS INDICATED.

GROUND ROD TO BE INSTALLED PER E.S.A. AND TOWN OF CALEDON STANDARDS AND SPECIFICATIONS.

HYDRO POLE

ALL ROADS WITHIN THIS DEVELOPMENT ARE CONSIDERED AS LOCAL ROADS.

APPROVED FOR CONSTRUCTION  
THIS APPROVAL CONSTITUTES A GENERAL REVIEW AND DOES NOT CERTIFY DIMENSIONAL ACCURACY.

THIS APPROVAL IS SUBJECT TO THE FURTHER CERTIFICATION OF THE 'AS CONSTRUCTED' WORKS BY A REGISTERED PROFESSIONAL ENGINEER OF THE PROVINCE OF ONTARIO.

DATE: \_\_\_\_\_ APPROVED BY: \_\_\_\_\_

| REV | DESCRIPTION | BY | CHECKED |
|-----|-------------|----|---------|
|     |             |    |         |

**REVISIONS**

REGISTERED PROFESSIONAL ENGINEER  
**S. DATTA**  
100206429  
2022/11/16  
PROVINCE OF ONTARIO

**RTG Systems Inc.**  
ELECTRICAL CONSULTING ENGINEERS  
3518 Mainway Dr., Suite 201 Office: (905) 335-4470  
BURLINGTON ON L7M 1A8 Toronto: (905) 827-7887  
E-MAIL: general@rtgsystems.com

**TOWN OF CALEDON**  
10249 HUNSDEN SIDEROAD  
21T-XXXX  
STREETLIGHTING SYSTEM

|                                    |                     |              |       |
|------------------------------------|---------------------|--------------|-------|
| DWG BY:<br>S.D.                    | DATE:<br>2022.10.24 | CHK'D BY:    | DATE: |
| SCALE:<br>1:1000<br>EXCEPT SYMBOLS | DRAWING NO.         | SHEET 1 OF 1 |       |

**SL-1**

05925-00