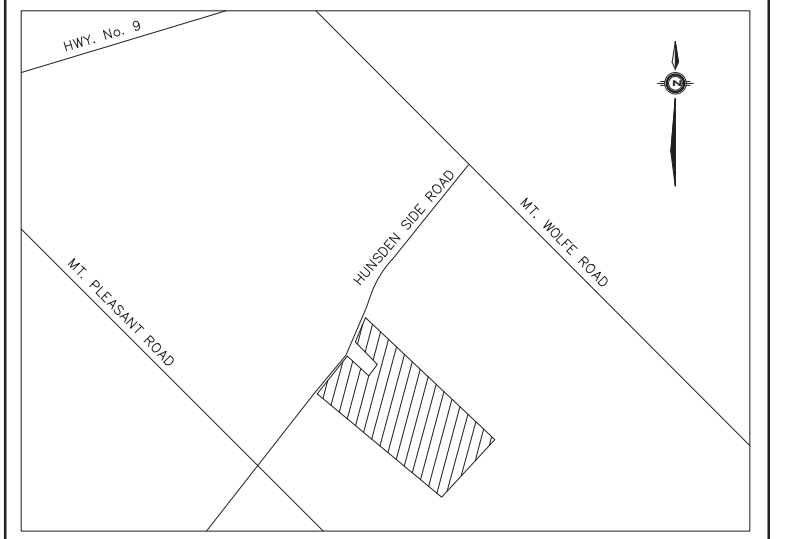


PHOTOMETRIC SUMMARY ROADWAYS		STREET A	STREET B
ILLUMINANCE	AVERAGE (lux)	5.0	5.5
	MAXIMUM (lux)	12.4	10.9
	MINIMUM (lux)	1.2	1.9
UNIFORMITY	AVG/MIN RATIO	4.2:1	2.9:1
	MAX/MIN RATIO	10.3:1	5.7:1

PHOTOMETRIC SUMMARY INTERSECTIONS		STREET A AND B
ILLUMINANCE	AVERAGE (lux)	8.6
	MAXIMUM (lux)	12.3
	MINIMUM (lux)	4.5
UNIFORMITY	AVG/MIN RATIO	1.9:1
	MAX/MIN RATIO	2.7:1

TOWN OF CALEDON
PLANNING RECEIVED
 November 18, 2022



KEY PLAN N.T.S.

LEGEND

STREETLIGHT POLE: 9.9m (32.5') OCTAGONAL CONCRETE PRESTRESSED AND REINFORCED, BY STRESS-CRETE CAT.# E325-BPO-G-CSA STYLE 170 C/W TOP CAP AND FINISHED IN POLISHED MIDNIGHT LACE CAT.# S-10 OR APPROVED EQUIVALENT

LUMINAIRE: 40W 120V 3000K LED DECORATIVE COACH STYLE, KING OR COOPER EQUIVALENT TO 70W HPS. KING CAT.# K601D-S-PANL-III-40(SL)7030 OR COOPER CAT.# S0LE02LEDDUSL2BK-7030, C/W 7-PIN PHOTO CONTROL, MOUNTED ON A 1.5m LARGE SCROLL ARM (KA-175-L-S). NOTE: LUMINAIRE AND ARM TO BE FACTORY FINISHED POWDER COAT BLACK.

USING: IES FILE: 601dsp4n3x04030xxe.ies LFL:0.85

ALL ROADS WITHIN THIS DEVELOPMENT ARE CONSIDERED AS LOCAL ROADS.

APPROVED FOR CONSTRUCTION
 THIS APPROVAL CONSTITUTES A GENERAL REVIEW AND DOES NOT CERTIFY DIMENSIONAL ACCURACY.
 THIS APPROVAL IS SUBJECT TO THE FURTHER CERTIFICATION OF THE 'AS CONSTRUCTED' WORKS BY A REGISTERED PROFESSIONAL ENGINEER OF THE PROVINCE OF ONTARIO.
 DATE: _____ APPROVED BY: _____

REV#	DATE	DESCRIPTION	BY	CHECKED

REVISIONS

RTG Systems Inc.
 ELECTRICAL CONSULTING ENGINEERS
 3518 Mainway Dr., Suite 201 Office: (905) 335-4470
 BURLINGTON ON L7M 1A8 Toronto: (905) 827-7887
 E-MAIL: general@rtgsystems.com

TOWN OF CALEDON
 10249 HUNSDEN SIDEROAD
 21T-XXXX
 PHOTOMETRIC STUDY

DWG BY S.D.	DATE 2022.11.09	CK'D BY	DATE
SCALE 1:750 EXCEPT SYMBOLS	DRAWING NO.	SHEET 1 OF 1	
PHOT-1			

