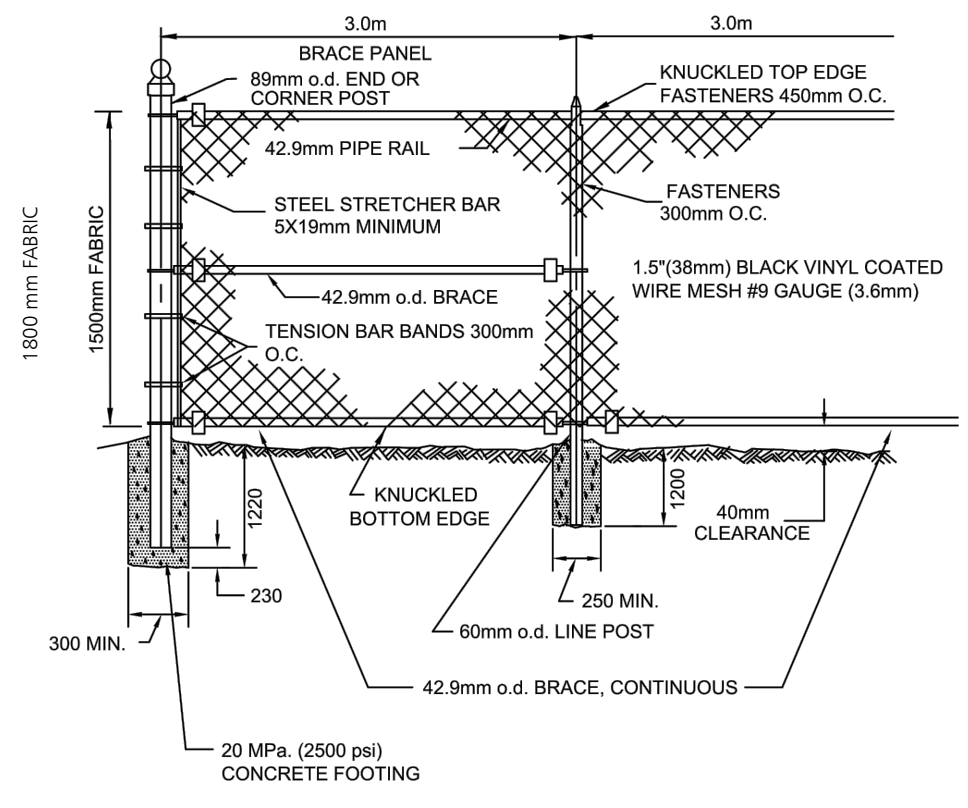


**PLANT LIST**

BOTANICAL NAME	COMMON NAME	QUANTITY	CALIPER @ DBH	HEIGHT / SPREAD	CONDITION
<b>TREES</b>					
Acer x freemanii 'Jeffersred'	Autumn Blaze Maple	15	70mm	-	WB or B&B
Quercus rubra	Red Oak	16	70mm	-	WB or B&B
Tilia americana 'Redmond'	Redmond Linden	16	70mm	-	WB or B&B
Ulmus morton 'Accolade'	Accolade Elm	13	70mm	-	WB or B&B

**NOTES:**

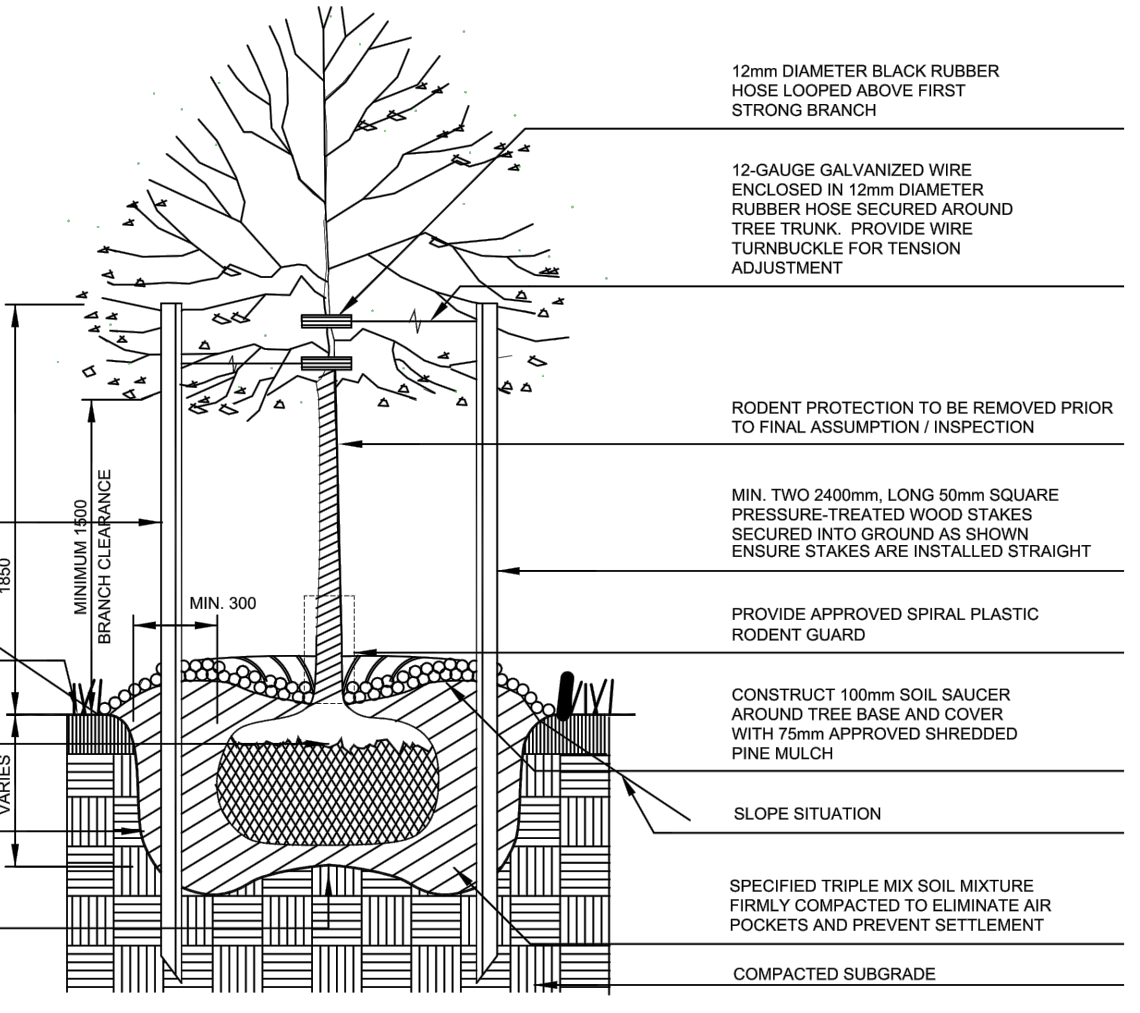
- Plant material to conform to the Canadian Nursery Trades association metric Guide Specifications for Nursery Stock, latest edition.
- Contractor to verify quantities listed: plant quantities to be supplied as shown in plan in case of discrepancies between plan and quantities listed.
- All plant material to be sourced from nurseries with an 800km radius.
- Provide two (2) year warranty for all plant material.



1.8m High Chain Link Fence  
N.T.S.

**NOTES:**

- WILT PROOF IN NURSERY PRIOR TO DELIVERY.
- PRUNING SHALL BE LIMITED TO DEAD, DISEASED OR BROKEN BRANCHES AFTER PLANTING. MAINTAIN ORIGINAL SHAPE OF THE TREE. DO NOT TRIM LEADER BRANCH.
- SET TOP OF ROOT BALL 75-100mm HIGHER THAN ADJACENT FINISHED GRADE TO ALLOW FOR SETTLEMENT.



Deciduous Tree Planting  
N.T.S.

**Planting**

- Coordinate shipping of plants and excavation of holes to ensure minimum time lapse between digging and planting.
- Tie branches of tree and shrubs securely and protect plant material against abrasion, exposure, and extreme temperature during transit. Avoid binding of planting stock with rope or wire which would damage bark, break branches or destroy natural shape of plant. Give full support to root ball of large trees during lifting.
- Cover plant foliage with tarpaulin and protect bare roots by means to prevent loss of moisture during transit and storage.
- Provide one year warranty for plant material as itemized on plant list. At end of warranty inspection, all plant material will be in vigorous growing condition, free of pests and disease and true to natural form.
- During warranty period, remove from site any plant material that has died or failed to grow satisfactorily as determined by owner/architect/landscape architect. Extend warranty on replacement plant material for a period equal to the length of original warranty period. Remove trunk wrapping, tree stakes and guy wired at the end of the warranty period. Upon request, remove trunk wrapping for visual inspection and rewrap.
- Plant material: comply with metric guide - specification for nursery stock, 1984 edition of Canadian Nursery Trades Association referring to size and development of plant material and root ball. Measure plants when branches are in their natural position. Height and spread dimensions refer to main body of plant and not from branch tip to branch tip. Use trees and shrubs of no. 1 grade.
- Stake out all tree locations and planting beds and obtain approval from architect/landscape architect/owner before excavation. The location of trees and planting areas where shown on drawings is approximate only and may require adjustment due to site conditions or as directed by the consultant.
- Plant only under conditions that are conducive to health and physical conditions of plants.
- Provide planting schedule, extending planting operations over a long period. Using limited crew will not be accepted.
- Excavate planting pits and beds to depth indicated on details. Fill with a planting mixture of one part peat moss, six parts topsoil with commercial bonemeal for planting holes in heavy soils if natural drainage does not exist. Have method approved.
- Immediately following any planting operations, remove all debris and excess material from site, leaving the site neat and tidy.
- It is the contractor's responsibility to maintain plant material for 30 days following planting or until time of final acceptance. Maintenance of plant material during warranty period is the owner's responsibility.
- Maintenance tasks until time of final acceptance to include all of the following:
  - Watering
  - Fertilizing
  - Weed Control
  - Insect and Fungus Control
  - Pruning
- Submit separate maintenance cost for consideration by owner during warranty period only. Refer to maintenance specifications.

Planting and Seeding Specifications

**LEGEND**

- Property Line
- Lot Line/R.O.W.
- 150mm depth topsoil, fine-grade and sod
- Deciduous tree
- 1.8m ht. black vinyl chain link fence
- Tree protection - solid hoarding. See TS.1 by Baker Turner inc.
- Existing trees to remain. See TS.1 by Baker Turner inc.

**Town of Caledon**  
**APPROVED FOR CONSTRUCTION**

This approval constitutes a general review and does not certify dimensional accuracy.

This approval is subject to further certification of the "as constructed" works by a registered professional Landscape Architect of the Province of Ontario.

Date: \_\_\_\_\_

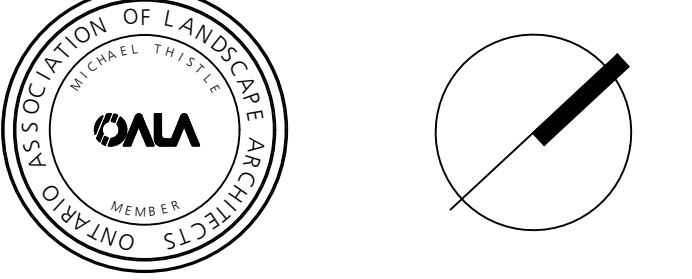
Approved By: \_\_\_\_\_

Note: All Drawings by Baker Turner inc. to be Printed in Colour.

**REVISIONS**

DATE	DESCRIPTION
Jun 30, 22	Issued for Submission

NOTE: Contractor is to check and verify all dimensions and conditions on the project, and is to immediately report any discrepancies to the landscape architect before proceeding with the work.



**B.T.I.**  
Landscape Architecture | Site Design

Suite 234  
2010 Winston Park Drive  
Oakville Ontario L6H 5R7

Tel: (289) 291-7620  
email: tbs@bakerturner.com

**Project Title**  
Carringwood Homes  
Hunsden Residential  
10249 Hunsden Sideroad  
Town of Caledon, ON  
Landscape Plan and Details

Date	Issued
April 2022	
Job Number	Drawn By
BTI-1631	MT
Scale	Checked By
As Shown	MT
Sheet Number	File Number
L1	