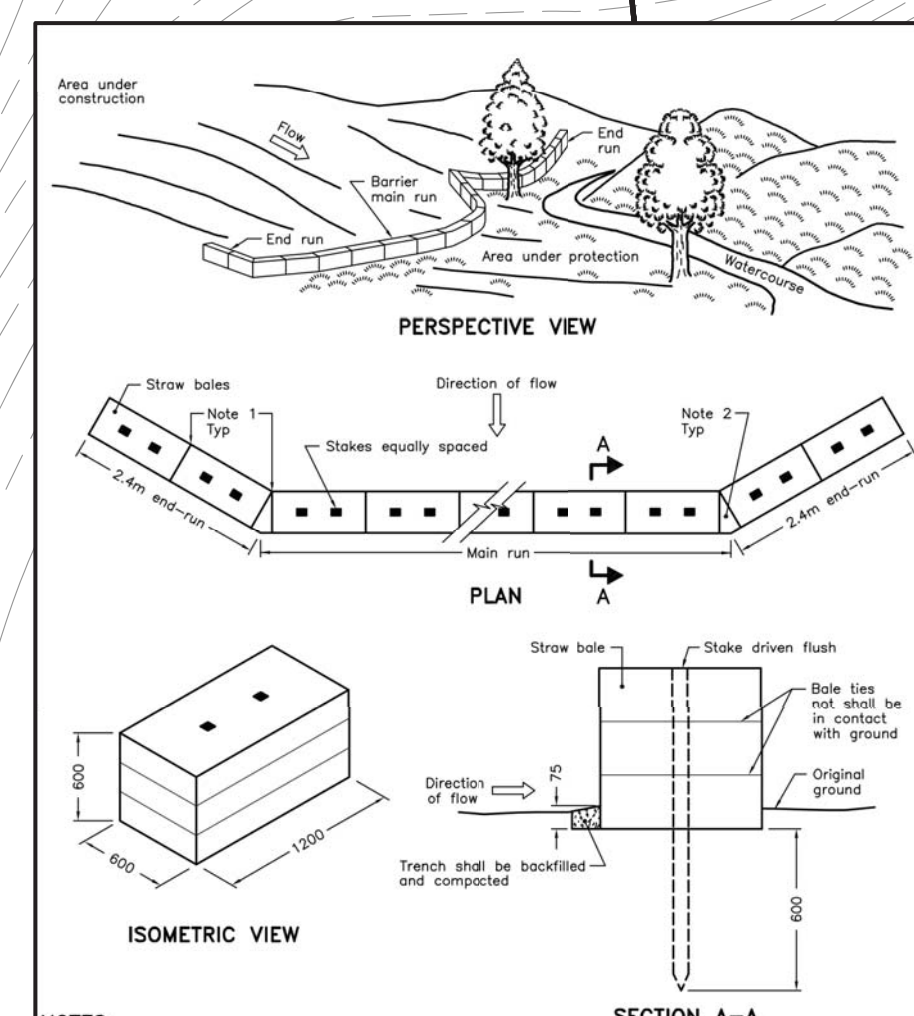


LEGEND

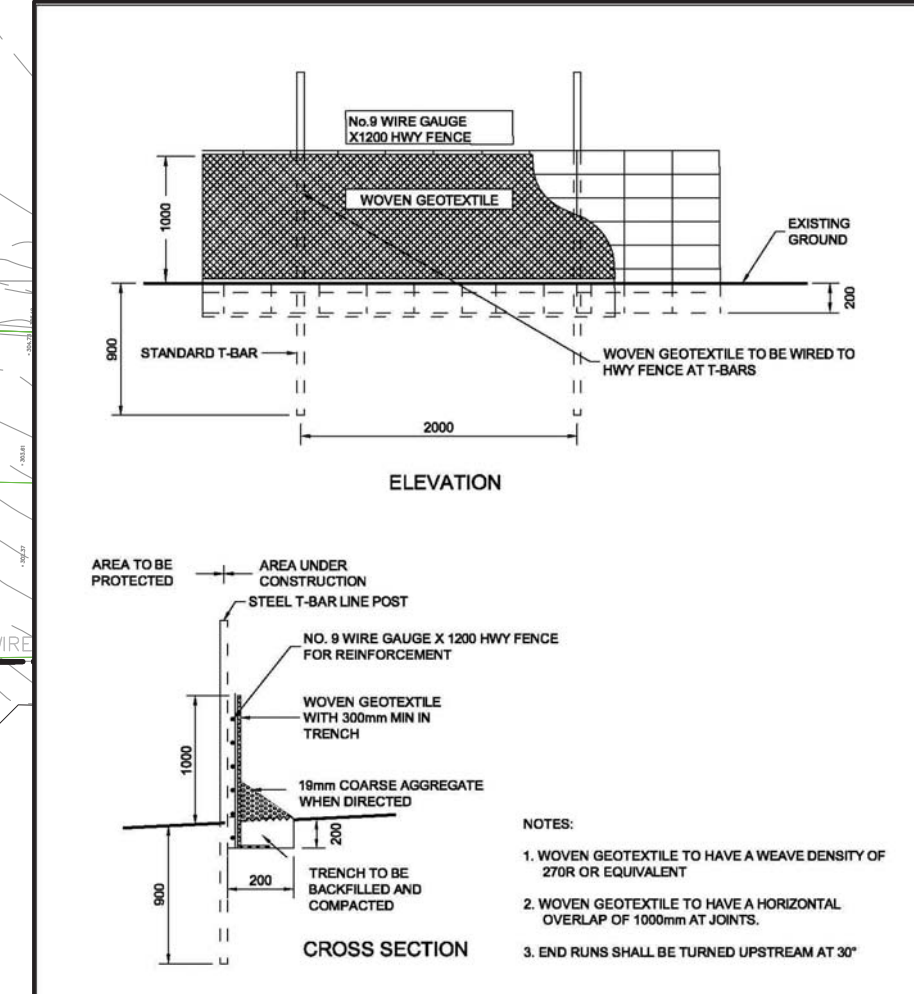
- PROPERTY LINE
- - - EXISTING CONTOUR (0.5m)
- - - EXISTING CONTOUR (1.0m)
- - - EXISTING DITCH
- - - EXISTING GRADE
- ▨ MUD-MAT; SEE DETAIL MODIFIED
- SF SILT FENCE (T.O.C. STD. DWG. No. 304) - SEE DETAIL ON C104
- HDSF HEAVY DUTY SILT FENCE (STRAW BALE REINFORCED DOUBLE SILT FENCE) - SEE DETAIL ON THIS DRAWING
- ◊ ROCK FLOW CHECK DAM; OPSD 219.210



NOTES:
1 Straw bales shall be butted tightly against adjoining bales to prevent sediment flow through barrier.
2 Caulk and compact gaps with loose straw.
A All dimensions are in millimetres unless otherwise shown.

ONTARIO PROVINCIAL STANDARD DRAWING Nov 2015 Rev 2

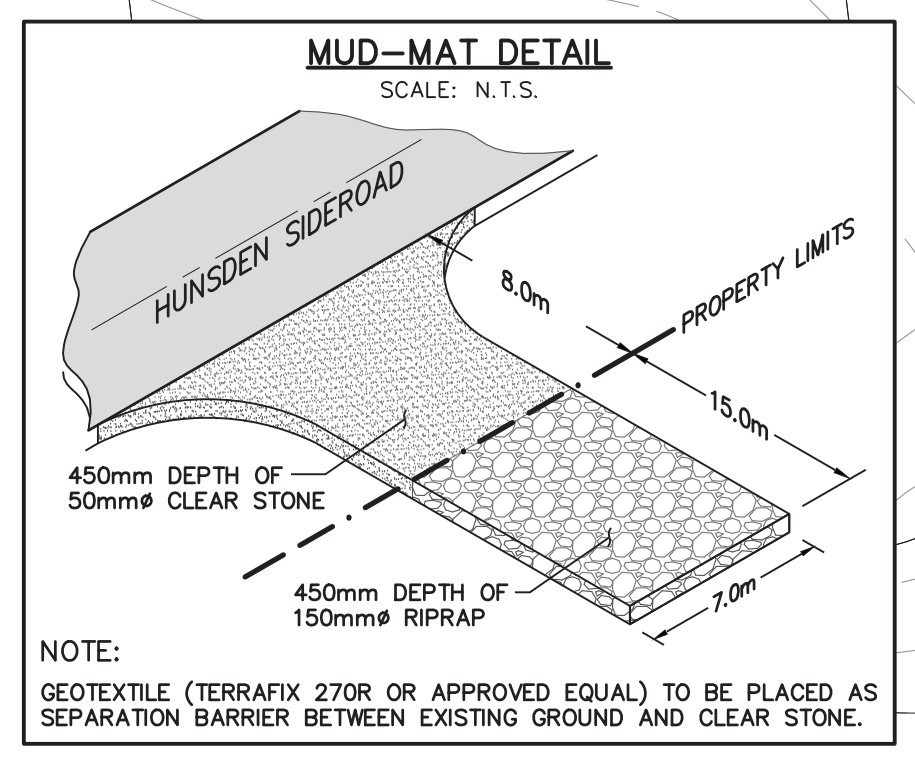
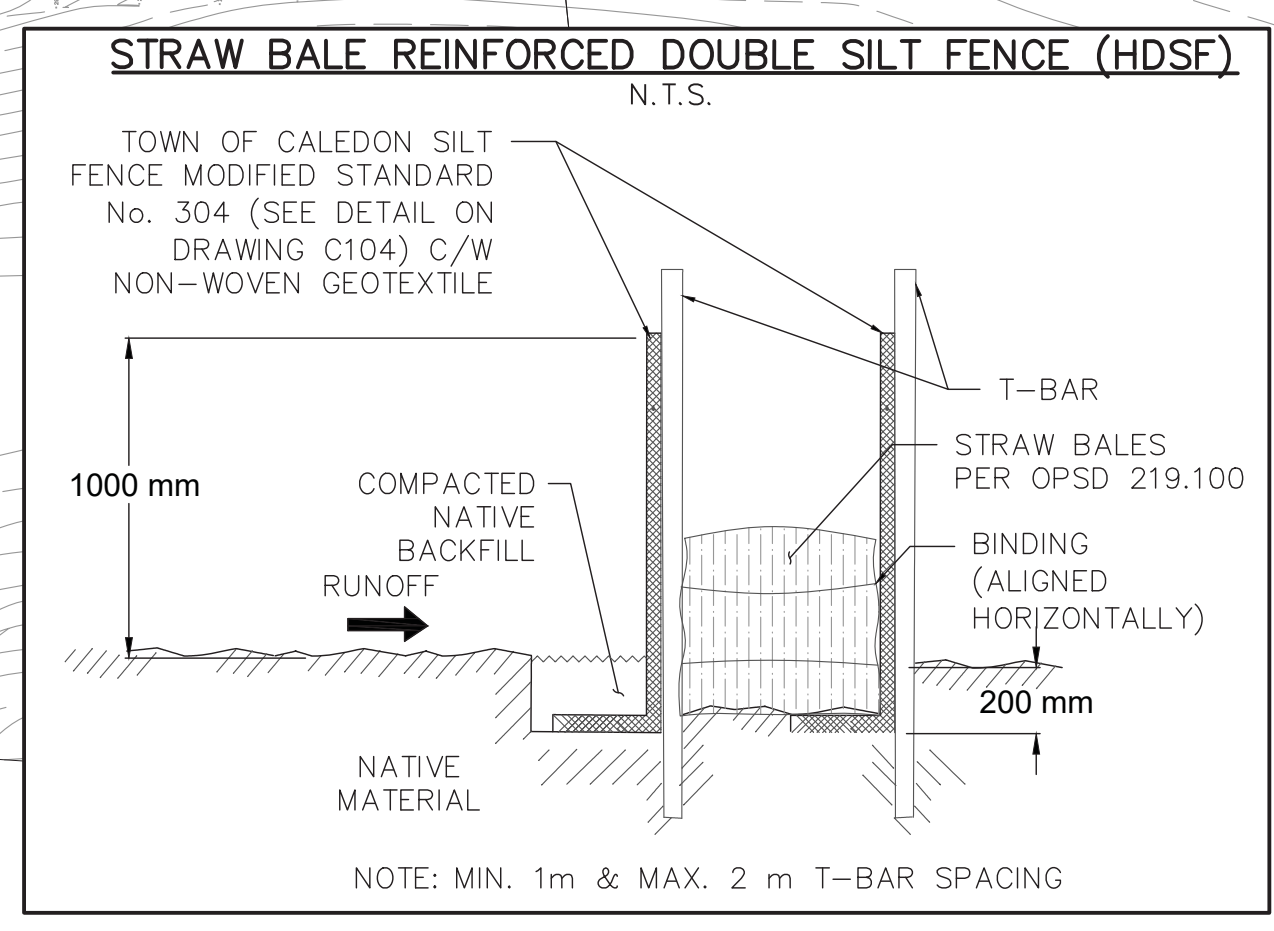
LIGHT-DUTY STRAW BALE BARRIER
OPSD 219.100



NO.	REVISION	APPROVED	DATE
1	NAME CHANGED, STANDARD No. 304.01 NOW 304		JUNE 01
2	SUPPORT FENCING CHANGED TO HWY FENCE		

TOWN OF CALEDON

DESIGNED: C.C. DATE: APRIL 2000
DRAWN: B.J.M. SCALE: N.T.S.
STANDARD No. 304



0	ISSUED FOR FIRST SUBMISSION (2BA)	2022/JUNE/30
No.	ISSUE / REVISION	YYYY/MMM/DD

ELEVATION NOTE:
ELEVATIONS SHOWN HEREON ARE GEODETIC DATUM AND ARE DERIVED FROM THE MINISTRY OF NATURAL RESOURCES BENCHMARKS.

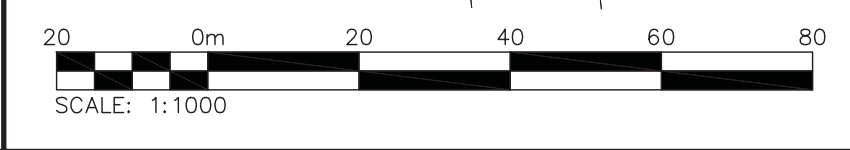
SITE BENCHMARK:
No. 00820108111
ELEVATION = 286.833m
No. 00820108113
ELEVATION = 290.087

SURVEY NOTES:
THIS TOPOGRAPHIC SURVEY WAS COMPLETED BY J.D. BARNES LIMITED ON MARCH 22, 2022. REF. No: 22-30-839-00

DRAWING NOTES:
THIS DRAWING IS THE EXCLUSIVE PROPERTY OF C.F. CROZIER & ASSOCIATES INC. AND THE REPRODUCTION OF ANY PART OF IT WITHOUT PRIOR WRITTEN CONSENT OF THIS OFFICE IS STRICTLY PROHIBITED.
THE CONTRACTOR SHALL VERIFY ALL DIMENSIONS, LEVELS, AND DATUMS ON SITE AND REPORT ANY DISCREPANCIES OR OMISSIONS TO THIS OFFICE PRIOR TO CONSTRUCTION.
THIS DRAWING IS TO BE READ AND UNDERSTOOD IN CONJUNCTION WITH ALL OTHER PLANS AND DOCUMENTS APPLICABLE TO THIS PROJECT. DO NOT SCALE THIS DRAWING.
ALL EXISTING UNDERGROUND UTILITIES TO BE VERIFIED IN THE FIELD BY THE CONTRACTOR PRIOR TO CONSTRUCTION.

Project
**10249 HUNSDEN SIDEROAD
TOWN OF CALEDON**

Drawing
**PRELIMINARY EROSION AND
SEDIMENT CONTROL PLAN**



NOT FOR CONSTRUCTION

Stamp

PRELIMINARY

CROZIER CONSULTING ENGINEERS

2800 HIGH POINT DRIVE
SUITE 100
MILTON, ON L9T 6P4
905-875-0026 T
905-875-4915 F
WWW.CFCROZIER.CA

Drawn: M.I.M. Design: P.S. Project No: **952-6305**
Check: S.C. Check: T.E. Scale: 1:1000 Dwg: **C101**