

ADDITIONAL PLANTING NOTES

TREE LOCATIONS:
Due to limited space in the boulevard resulting from the installation of bioswales, trees are located within private property adjacent to the street right-of-way.

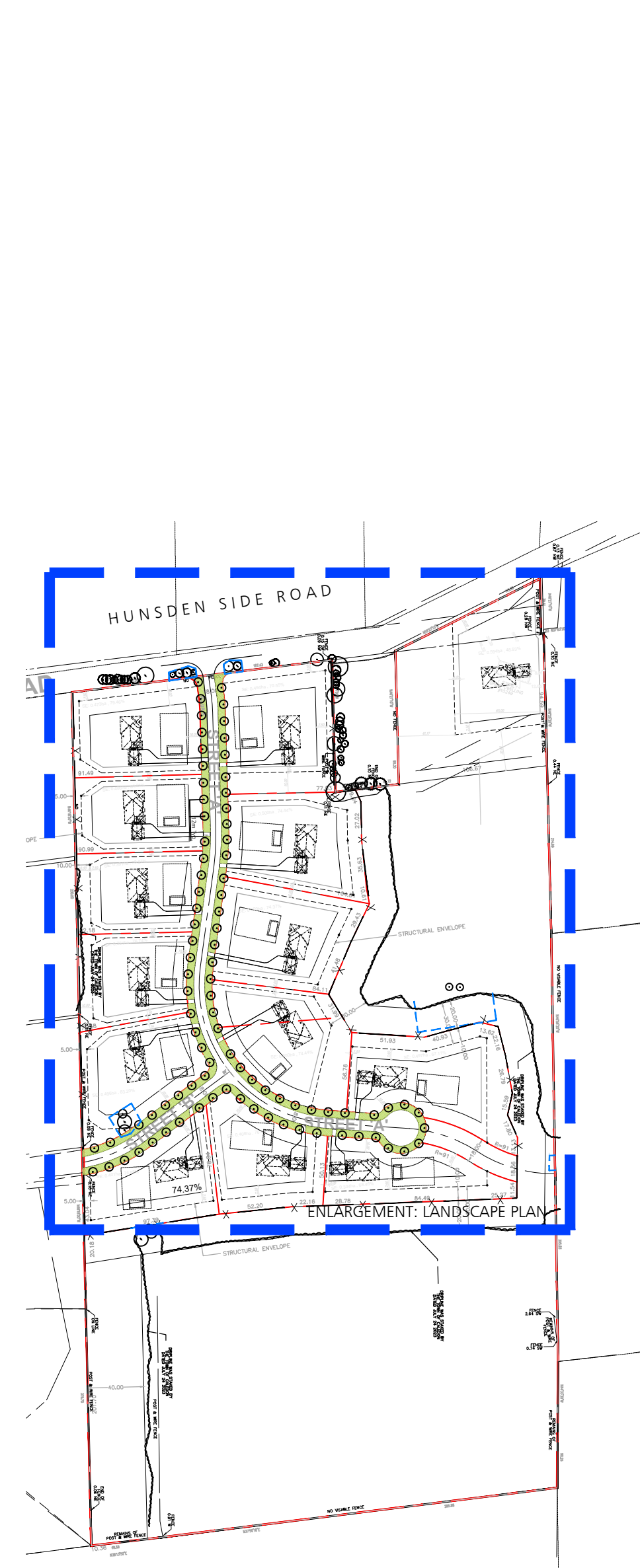
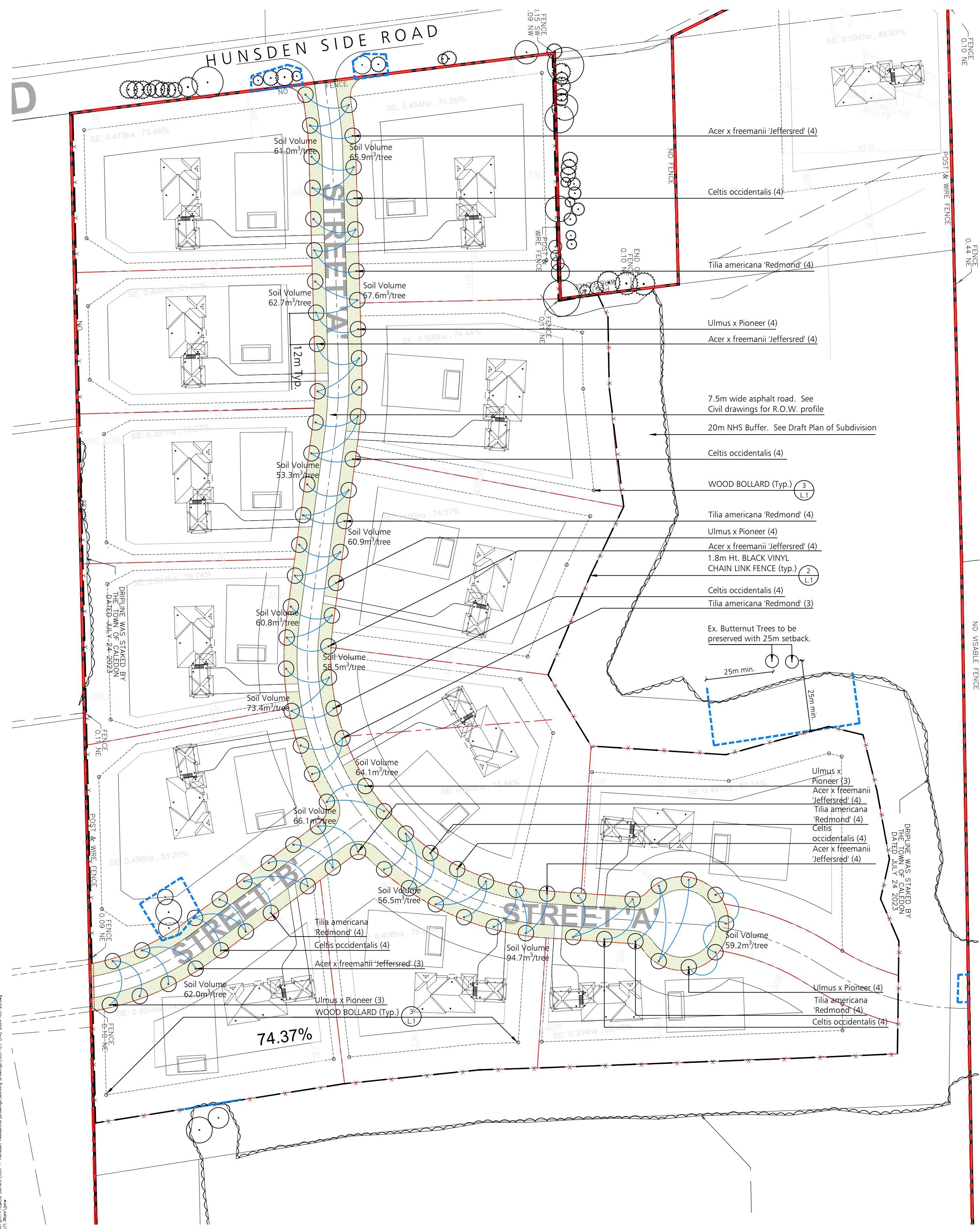
SOIL VOLUME:
Trees are located 1m away from the bioswale and within private property. Soil volumes includes volumes from the boulevard and private property in front of the building envelope and private infrastructure.

PLANT LIST

BOTANICAL NAME	COMMON NAME	QUANTITY	CALIPER @ DBH	HEIGHT / SPREAD	CONDITION
TREES					
<i>Acer x freemanii</i> 'Jeffersred'	Autumn Blaze Maple	23	70mm	-	WB or B&B
<i>Celtis occidentalis</i>	Common Hackberry	24	70mm	-	WB or B&B
<i>Tilia americana</i> 'Redmond'	Redmond Linden	23	70mm	-	WB or B&B
<i>Ulmus x Pioneer</i>	Pioneer Elm	18	70mm	-	WB or B&B

NOTES:

- Plant material to conform to the Canadian Nursery Trades association metric Guide Specifications for Nursery Stock, latest edition.
- Contractor to verify quantities listed: plant quantities to be supplied as shown in plan in case of discrepancies between plan and quantities listed.
- All plant material to be sourced from nurseries with an 800km radius.
- Provide two (2) year warranty for all plant material.

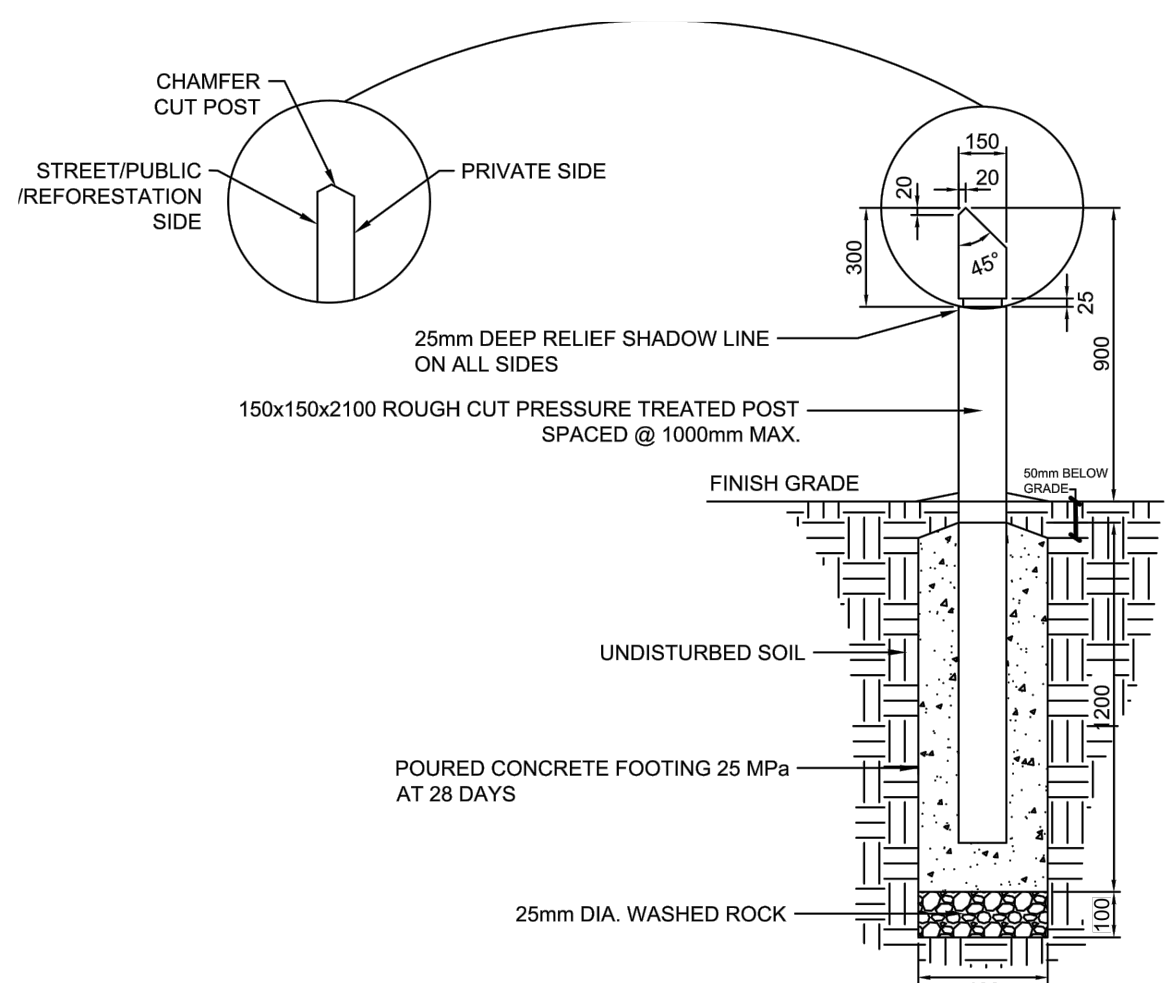


KEY PLAN

N.T.S.

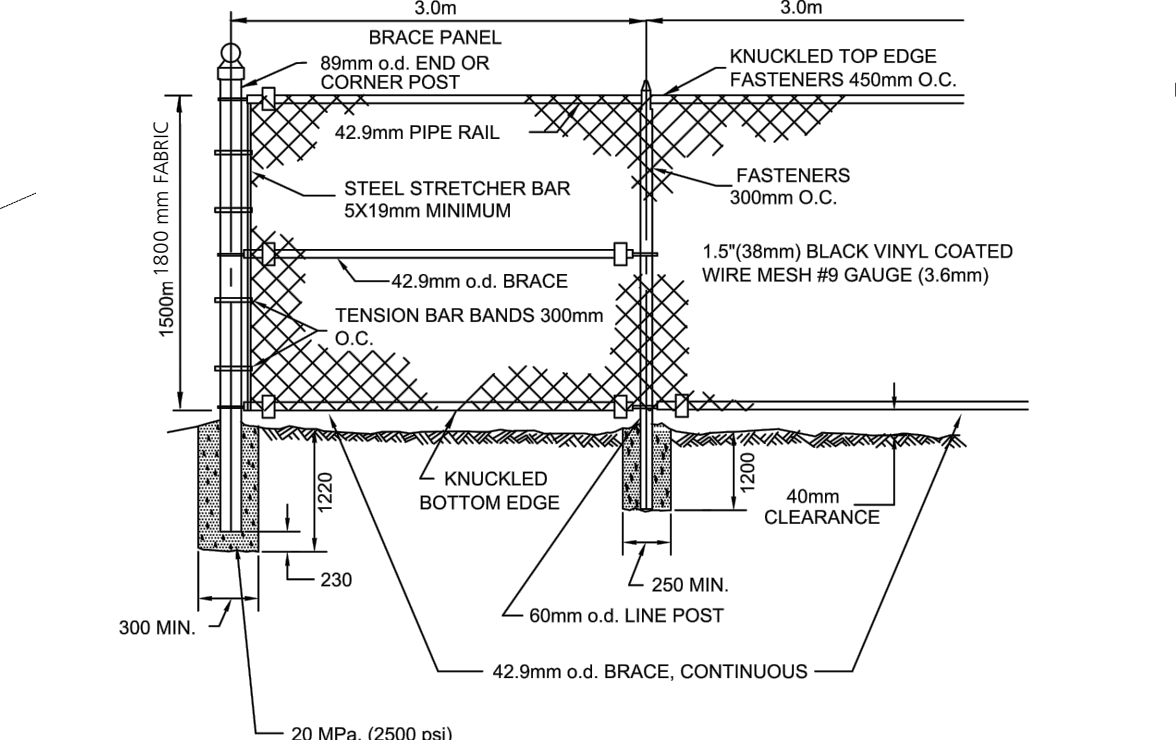
- Coordinate shipping of plants and excavation of holes to ensure minimum time lapse between digging and planting.
- Tie branches of tree and shrubs securely and protect plant material against abrasion, exposure, and extreme temperature during transit. Avoid binding of planting stock with rope or wire which would damage bark, break branches or destroy natural shape of plant. Give full support to root ball of large trees during lifting.
- Cover plant foliage with tarpaulin and protect bare roots by means to prevent loss of moisture during transit and storage. Provide two year warranty for plant material as itemized on plant list. At end of warranty inspection, all plant material will be in vigorous growing condition, free of pests and disease and true to natural form.
- During warranty period, remove from site any plant material that has died or failed to grow satisfactorily as determined by owner/architect/landscape architect. Extend warranty on replacement plant material for a period equal to the length of original warranty period. Remove trunk wrapping, tree stakes and guy wired at the end of the warranty period. Upon request, remove trunk wrapping for visual inspection and rewrap.
- Plant material: comply with metric guide - specification for nursery stock, 1984 edition of Canadian Nursery Trades Association referring to size and development of plant material and root ball. Measure plants when branches are in their natural position. Height and spread dimensions refer to main body of plant and not from branch tip to branch tip. Use trees and shrubs of no. 1 grade.
- Stake out all tree locations and planting beds and obtain approval from architect/landscape architect/owner before excavation. The location of trees and planting areas where shown on drawings is approximate only and may require adjustment due to site conditions or as directed by the consultant.
- Plant only under conditions that are conducive to health and physical conditions of plants.
- Provide planting schedule, extending planting operations over a long period. Using limited crew will not be accepted.
- Excavate planting pits and beds to depth indicated on details. Fill with a planting mixture of one part peat moss, six parts topsoil with commercial bonemeal for planting holes in heavy soils if natural drainage does not exist. Have method approved.
- Immediately following any planting operations, remove all debris and excess material from site, leaving the site neat and tidy.
- It is the contractor's responsibility to maintain plant material for 30 days following planting or until time of final acceptance. Maintenance of plant material during warranty period is the owners responsibility.
- Maintenance tasks until time of final acceptance to include all of the following:
 - Watering
 - Fertilizing
 - Weed Control
 - Insect and Fungus Control
 - Pruning
- Submit separate maintenance cost for consideration by owner during warranty period only. Refer to maintenance specifications.

PLANTING AND SEEDING SPECIFICATIONS



WOOD BOLLARD

N.T.S.

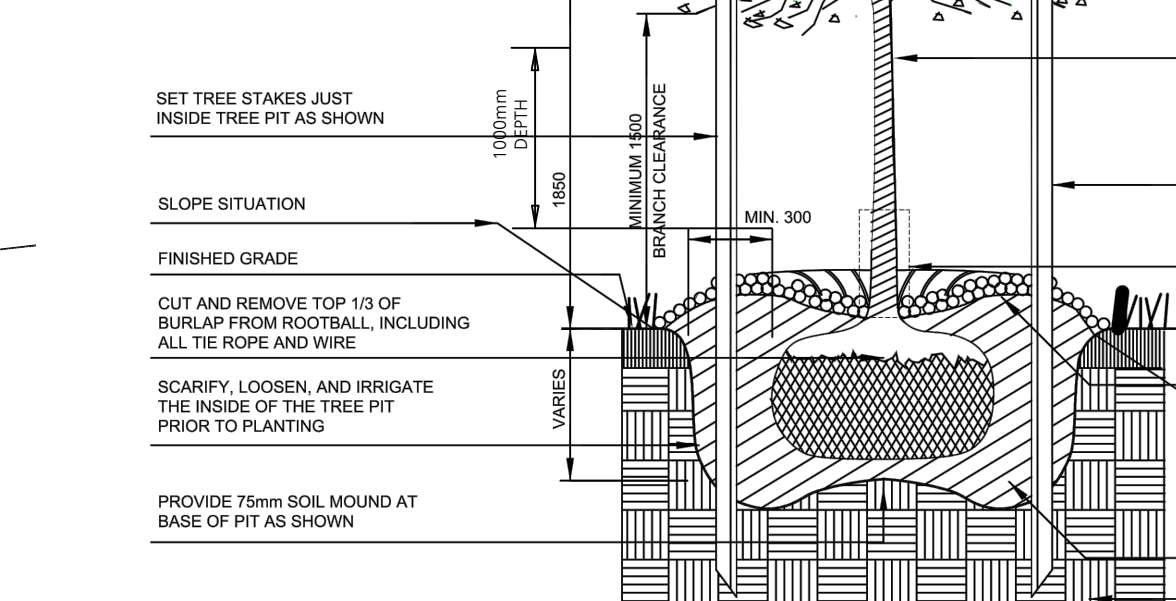


1.8 m HIGH CHAIN LINK FENCE

N.T.S.

NOTES:

- WILTPROOF IN NURSERY PRIOR TO DELIVERY.
- PRUNING SHALL BE LIMITED TO DEAD, DISEASED OR BROKEN BRANCHES AFTER PLANTING. MAINTAIN ORIGINAL SHAPE OF THE TREE. DO NOT TRIM LEADER BRANCH.
- SET TOP OF ROOT BALL 75-100mm HIGHER THAN ADJACENT FINISHED GRADE TO ALLOW FOR SETTLEMENT.



DECIDUOUS TREE PLANTING

N.T.S.

Topsoil Placement & Fine Grading

- Ensure that the approval has been obtained for rough grading prior to proceeding with this section of work.
- Scarify the rough graded areas to provide a loosened surface in order to allow bonding of the topsoil.
- Spread topsoil on the prepared and accepted rough graded surface to a minimum depth of 1000 mm firmly packed.
- Keep topsoil 25 mm below finished grade for sodded areas elsewhere bring topsoil up to finished grade of adjacent surfaces.
- The finished surface is to be smooth and even with no ruts, ruts or contaminants.
- Remove stones in excess of 10mm for areas to be seeded.
- Hand rake areas to be seeded or sodded as a final surface preparation coordinating the work to ensure that seeding or sodding can occur as soon as possible after raking has been completed.

Sodding

- Schedule deliveries in order to keep storage at job site to a minimum without causing delays.
- Sod shall be certified #1 Nursery Grown sod containing a mixture of Creeping Red, Hard and Chewings Fescue. It shall be no greater than 40mm (1-1/2") in thickness and with accordance with the classification of turf grass sod for the province by the national sod growers association.
- Obtain approval of topsoil grade and depth before starting sodding. Areas to be smooth graded by a landscape grader and hand raked to provide a completely smooth and even surface.
- Lay sod in rows, perpendicular to slope, smooth and even with adjoining areas and with joints staggered. Butt sections closely without overlapping or leaving gaps between sections. Cut out irregular or thin sections with a sharp knife.
- Stake all sod on slopes greater than 1:5 (20%).
- Roll sod immediately after laying to press sod firmly on to the surface soil.
- Water immediately after sod laying to obtain moisture penetration through sod into top 100mm (4") of topsoil. Water by means of a water truck or if approved, by hydrant to obtain a complete drenching. Watering by small hose and sprinkler is not sufficient. For the first 30 days, soak to this depth at least once a week.
- Water in similar manner thereafter if sufficient rain does not fall, in order to keep the underlying surface moist. Watering until acceptance of the sod is the contractors responsibility.
- Immediately clean up soil or debris spilled onto pavement and dispose of deleterious materials.
- Sodded areas will be accepted and warranty period begins provided that:
 - Sod is completely green
 - Sod is knit to underlying soil and cannot be lifted when tugged by hand.
 - Fescue sod is NOT to be cut.
- It is the contractors responsibility to maintain sod until time of sod acceptance. Maintenance of sod after acceptance is the responsibility of owner.

NOTES:

- ALL CUT ENDS TO BE TREATED WITH WOOD PRESERVATIVE.
- ALL DIMENSIONS IN MILLIMETERS UNLESS OTHERWISE NOTED.
- CONSULT WITH TOWN OF CALEDON STAFF ON APPROPRIATE LOCATIONS OF WOOD BOLLARDS (EG. REFORESTATION LIMITS)

LEGEND

- Property Line
- Lot Line/R.O.W.
- 150mm depth topsoil, fine-grade and sod
- Deciduous tree
- 1.8m ht. black vinyl chain link fence
- Tree protection - solid hoarding. See TS.1 by Baker Turner inc.
- Existing trees to remain. See TS.1 by Baker Turner inc.
- Wood bollard

Town of Caledon
APPROVED FOR CONSTRUCTION

This approval constitutes a general review and does not certify dimensional accuracy.

This approval is subject to further certification of the "as constructed" works by a registered professional Landscape Architect of the Province of Ontario.

Date: _____

Approved By: _____

Note: All Drawings by Baker Turner inc. to be Printed in Colour.

REVISIONS

DATE	DESCRIPTION
Apr 03, 23	Issued for Submission
Nov 07, 23	Issued for Submission
Jun 30, 22	Issued for Submission

NOTE: Contractor to check and verify all dimensions and conditions on the project, and is to immediately report any discrepancies to the landscape architect before proceeding with the work.

ASSOCIATION OF LANDSCAPE ARCHITECTS

BTi

TOWN OF CALEDON
PLANNING RECEIVED
August 22, 2024

Landscape Architecture 1 Site Design

Suite 234
2010 Winston Park Drive
Oakville Ontario L6H 5R7

Tel: (289) 291-7620
email: tbs@bakerturner.com

Project Title
Carringwood Homes

Hunsden Residential
10249 Hunsden Sideroad
Town of Caledon, ON

Landscape Plan and Details

Date	Issued
April 2022	
Job Number	Drawn By
BTI-1631	MT
Scale	Checked By
As Shown	MT
Sheet Number	File Number
L1	