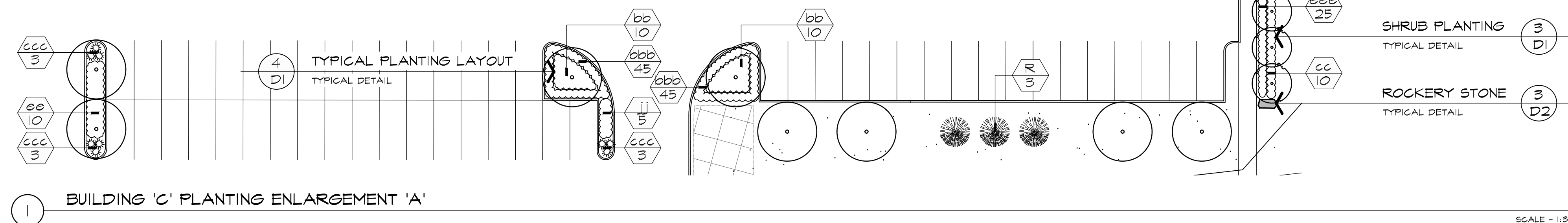


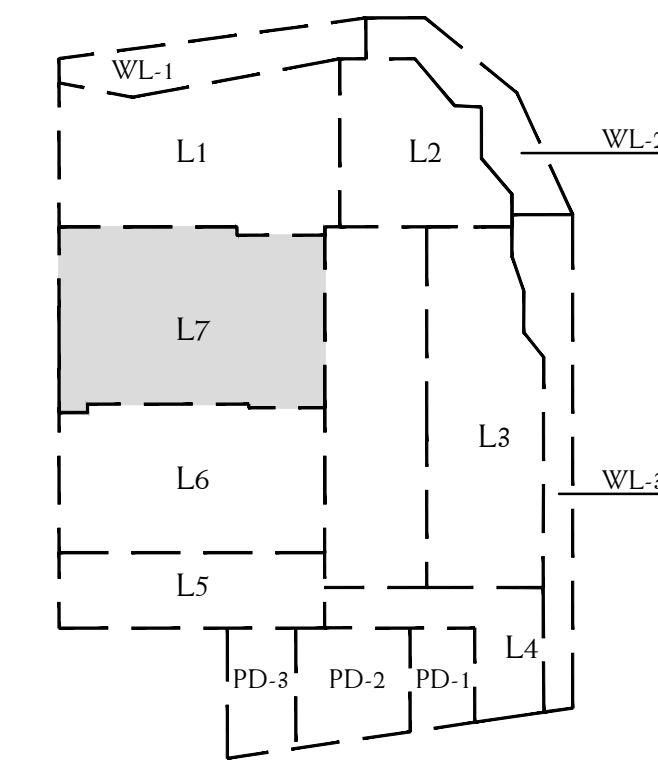
REFERENCE PLANT LIST

COMMON NAME	
DECIDUOUS TREES	
A	MARMO MAPLE
B	RED MAPLE
C	LEGACY SUGAR MAPLE
D	MAIDENHAIR TREE
E	SHADEMASTER HONEY-LOCUST
F	TULIP TREE
G	BLOODGOOD LONDON PLANETREE
H	WHITE OAK
K	VALLEY FORGE ELM
L	ACCOLADE ELM
T	BASSWOOD
ORNAMENTAL TREES	
M	ALLEGHENY SERVICEBERRY
N	EASTERN REDBUD
P	CHANTICLEER PEAR
CONIFEROUS TREES	
Q	WHITE FIR
R	BLUE COLORADO SPRUCE
S	EASTERN WHITE PINE
BROADLEAF EVERGREENS	
aa	BLONDY EUONYMUS
CONIFEROUS SHRUBS	
bb	ARGADIA JUNIPER
cc	DENSE YEW
DECIDUOUS SHRUBS	
dd	ARCTIC FIRE DOGWOOD
ee	RED RUGOSA ROSE
ff	BLUE ARCTIC WILLOW
gg	DART'S GOLD NINEBARK
hh	GRO-LOX FRAGRANT SUMAC
jj	GOLDFLAME SPIREA
kk	SILVER EDGE DOGWOOD
PERENNIALS AND GRASSES	
aaa	KARLEY ROSE FOUNTAIN GRASS
bbb	STELLA D'ORO DAYLILY
ccc	KARL FOERSTER FEATHER REED GRASS
ddd	AUTUMN JOY SEDUM
eee	PATRIOT HOSTA
fff	BLACK FOUNTAIN GRASS

SEE SHEET D-1 FOR MASTER SITE PLANT LIST



REFERENCE PLAN



LEGEND

- EXISTING TREES TO REMAIN
- DECIDUOUS TREES
- CONIFEROUS TREES
- SHRUB & GRASSES
- ROCKERY STONES
- TOPSOIL & TERRASEED TYPE A
- BEACH STONES
- WOODEN FENCE
- NOISE BARRIER

BASE INFORMATION OBTAINED ELECTRONICALLY FROM
BALDASSARRA ARCHITECTS INC. (TEL. 905-660-0722)

V1	MAR 11 2021	ISSUED FOR FIRST SUBMISSION	AV/ LK
no.	date	version	by

All information hereon to be checked and verified at the site and any discrepancies must be reported to and clarified by the landscape architect before commencing work. All drawings, specifications, details, digital information, etc., prepared by the landscape architect are instruments of service and as such are his property and must be returned at his request.

ALEXANDER BUDREVICS
& ASSOCIATES LIMITED
LANDSCAPE ARCHITECTS

895 Don Mills Road, Second Tower, Suite 212
Toronto, Ontario, Canada, M3C 1W3

416.444.5201
416.444.5208

www.budrevics.com

project
PROPOSED INDUSTRIAL DEVELOPMENT
12035 DIXIE ROAD
CALEDON, ONTARIO
TRIBAL PARTNERS CANADA INC.

drawing

LANDSCAPE PLAN

date	MARCH 3, 2021	drawn	KM
scale*	1:500	file	3416 L7 V1-210311
direction			
project no.	3416		
sheet no.	L-7		

TOWN OF CALEDON
PLANNING
RECEIVED
March 17, 2021

*NOTED SCALE IS APPLICABLE ONLY WHEN PRINTED ON ARCH D (34"x36") SIZE SHEET