

5 PARKING SIGNAGE

TOWN OF CALEDON DETAIL

4 TYPICAL PLANTING LAYOUT

SYMBOLS REPRESENT INSTALLED PLANT SIZE

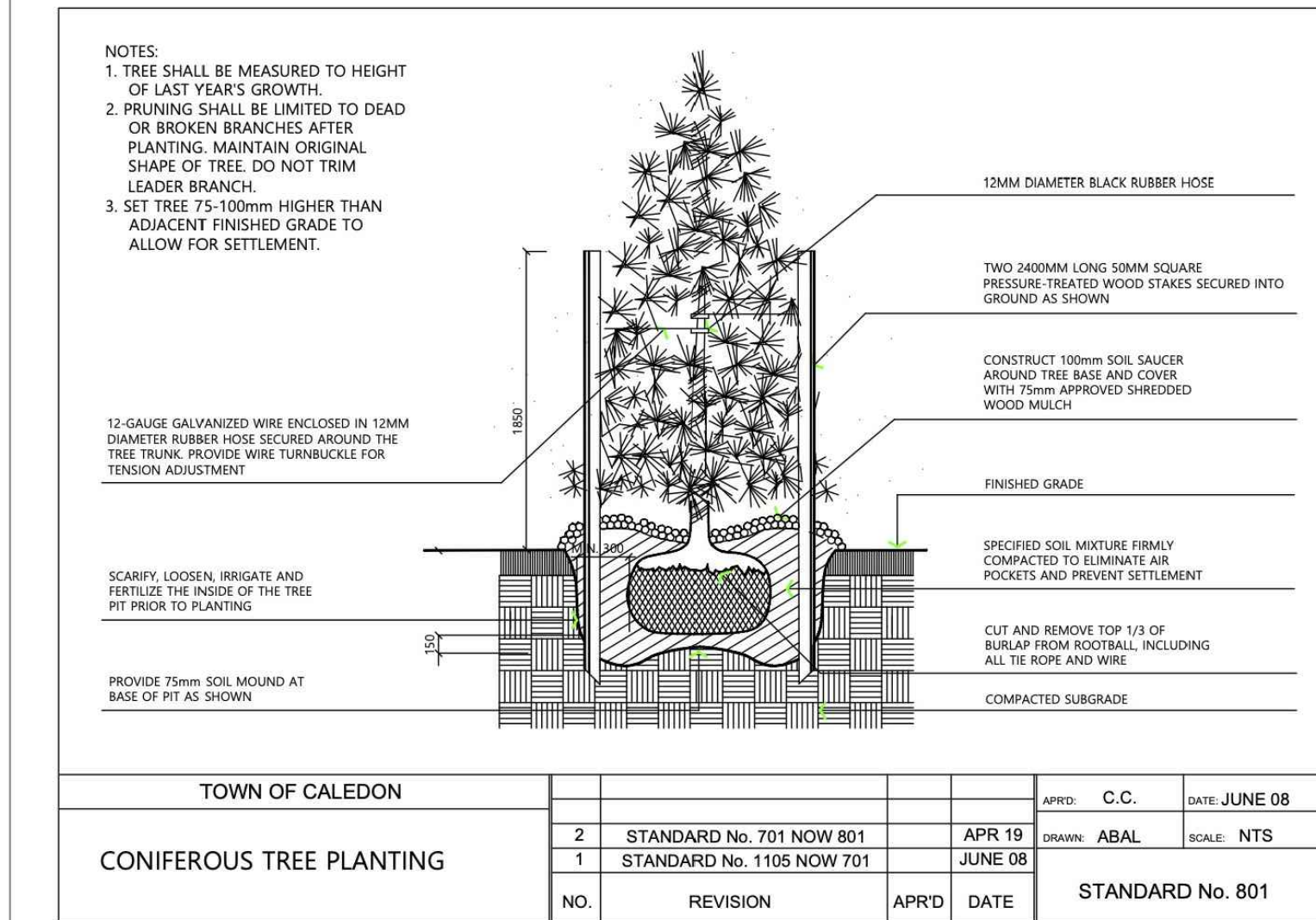
NTS

ABAL P401-140326

1 DECIDUOUS TREE PLANTING DETAIL

TOWN OF CALEDON STANDARD

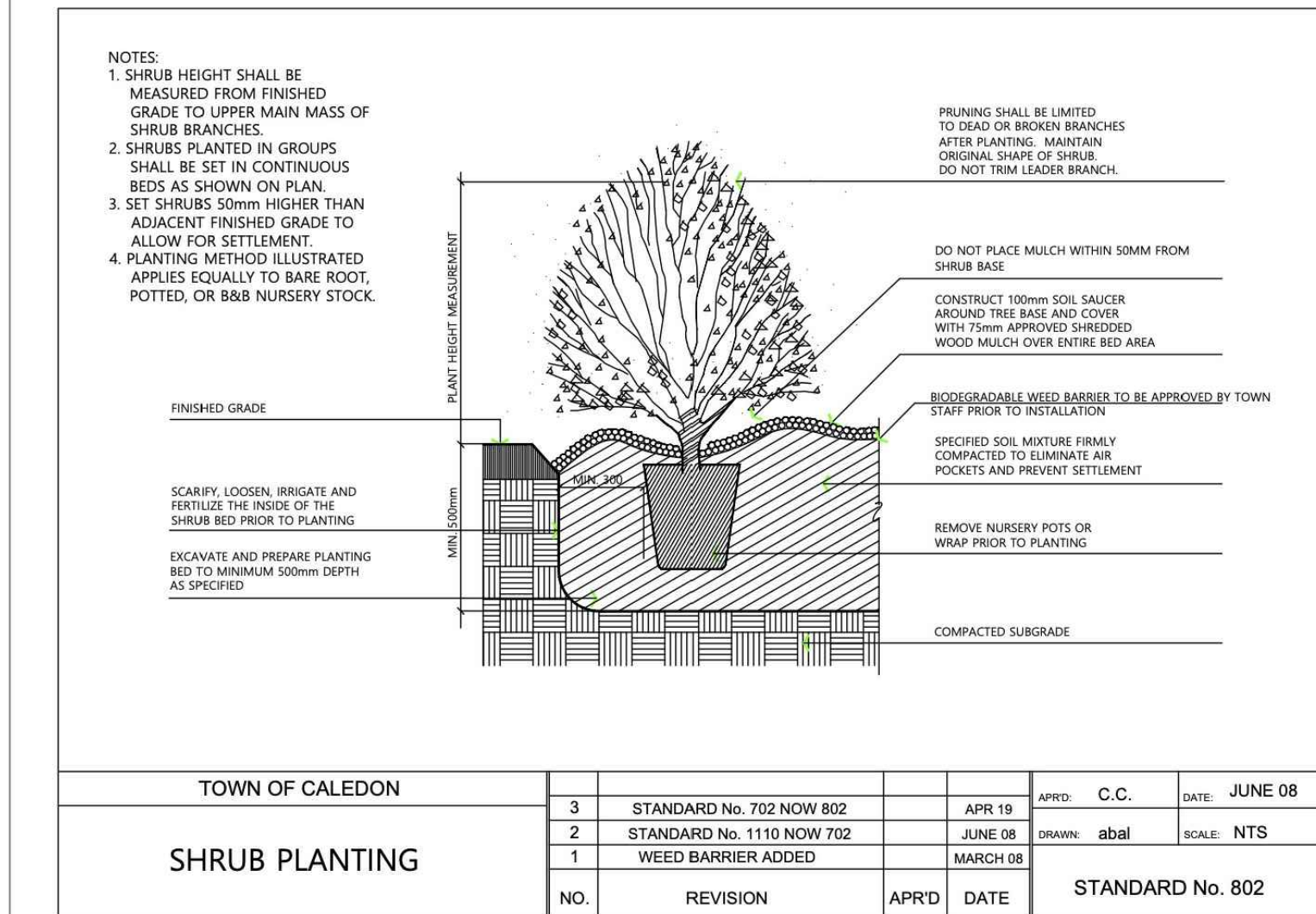
NTS



2 CONIFEROUS TREE PLANTING DETAIL

TOWN OF CALEDON STANDARD

NTS



3 SHRUB PLANTING DETAIL

TOWN OF CALEDON STANDARD

NTS

MASTER SITE PLANT LIST

PROJECT NAME:
DIXIE SOUTH (ABAL #3416)

In the event of a discrepancy between the planting plan and the plant list quantities, the planting plan shall govern.

KEY	QUANTITY	BOTANICAL NAME	COMMON NAME	CALIPER	HEIGHT	SPREAD	ROOT	REMARKS	SPACING
DECIDUOUS TREES									
A	24	ACER X FREEMANII 'MARMO'	MARMO MAPLE	70mm	3500mm	1500mm	S.B.	EQUAL FORM	- - - -
B	31	ACER RUBRUM	RED MAPLE	70mm	3500mm	1500mm	S.B.	EQUAL FORM	- - - -
C	27	ACER SACCHARUM 'LEGACY'	LEGACY SUGAR MAPLE	70mm	3500mm	1500mm	S.B.	EQUAL FORM	- - - -
D	21	GINKGO BILOBA	MAIDENHAIR TREE	70mm	3500mm	1500mm	S.B.	EQUAL FORM	- - - -
E	41	GLEDITSIA TRIACANTHOS VAR. INERMIS 'SHADEMASTER'	SHADEMASTER HONEY-LOCUST	70mm	3500mm	1500mm	S.B.	EQUAL FORM	- - - -
F	43	LIRIODENDRON TULIPIFERA	TULIP TREE	70mm	3500mm	1500mm	S.B.	EQUAL FORM	- - - -
G	35	PLATANUS X ACERIFOLIA 'BLOODGOOD'	BLOODGOOD LONDON PLANETREE	70mm	3500mm	1500mm	S.B.	EQUAL FORM	- - - -
H	22	QUERCUS ALBA	WHITE OAK	70mm	3500mm	1500mm	S.B.	EQUAL FORM	- - - -
K	25	ULMUS AMERICANA 'VALLEY FORGE'	VALLEY FORGE ELM	70mm	3500mm	1500mm	S.B.	EQUAL FORM	- - - -
L	30	ULMUS 'MORTON'	ACCOLADE ELM	70mm	3500mm	1500mm	S.B.	EQUAL FORM	- - - -
T	47	TILIA AMERICANA	BASSWOOD	70mm	3500mm	1500mm	S.B.	EQUAL FORM	- - - -
ORNAMENTAL TREES									
M	23	AMELANCHIER LAEVIS	ALLEGHENY SERVICEBERRY	3x50mm	2500mm	1200mm	S.B.	MULTI-STEM	- - - -
N	19	CERCIS CANADENSIS	EASTERN REDBUD	50mm	2500mm	1200mm	S.B.	EQUAL FORM	- - - -
P	3	PYRUS CALLERYANA 'CHANTICLEER'	CHANTICLEER PEAR	50mm	2500mm	1200mm	S.B.	EQUAL FORM	- - - -
CONIFEROUS TREES									
Q	49	ABIES CONCOLOR	WHITE FIR	- - - -	2000mm	1000mm	S.B.	SPECIMEN	- - - -
R	58	PICEA FENSIGENS VAR. 'GLAUCA'	BLUE COLORADO SPRUCE	- - - -	2000mm	1000mm	S.B.	SPECIMEN	- - - -
S	99	PINUS STROBUS	EASTERN WHITE PINE	- - - -	2000mm	1000mm	S.B.	SPECIMEN	- - - -
BROADLEAF EVERGREENS									
aa	290	EVONYMUS FORTUNEI 'BLONDY'	BLONDY EVONYMUS	- - - -	- - - -	500mm	POTTED	MIN. 2 YRS. GTH.	500mm
CONIFEROUS SHRUBS									
bb	385	JUNIPERUS SABINA 'ARGADIA'	ARGADIA JUNIPER	- - - -	- - - -	600mm	POTTED	MIN. 15 CANDLES	800mm
cc	60	TAXUS X MEDIA 'DENSIFORMIS'	DENSE YEW	- - - -	- - - -	600mm	POTTED	MIN. 15 CANDLES	800mm
DECIDUOUS SHRUBS									
dd	330	CORNUS SERICEA 'FARROW'	ARCTIC FIRE DOGWOOD	- - - -	800mm	- - - -	POTTED	MIN. 10 STEMS	700mm
ee	400	ROSA RUGOSA	RED RUGOSA ROSE	- - - -	600mm	- - - -	POTTED	MIN. 10 STEMS	800mm
ff	135	SALIX PURPUREA 'NANA'	BLUE ARCTIC WILLOW	- - - -	600mm	- - - -	POTTED	MIN. 10 STEMS	800mm
gg	180	PHYSOCARPUS OPULIFOLIUS 'DART'S GOLD'	DART'S GOLD NINEBARK	- - - -	600mm	- - - -	POTTED	MIN. 10 STEMS	700mm
hh	30	RHUS AROMATICA 'GRO-LOW'	GRO-LOW FRAGRANT SUMAC	- - - -	500mm	- - - -	POTTED	MIN. 10 STEMS	800mm
jj	566	SPIRAEA BUMALDA 'GOLDFLAME'	GOLDFLAME SPIREA	- - - -	600mm	- - - -	POTTED	MIN. 10 STEMS	700mm
kk	120	CORNUS ALBA 'ELEGANTISSIMA'	SILVER EDGE DOGWOOD	- - - -	800mm	- - - -	POTTED	MIN. 10 STEMS	800mm
PERENNIALS AND GRASSES									
ooo	52	PENNISETUM ORIENTALE 'KARLEY ROSE'	KARLEY ROSE FOUNTAIN GRASS	- - - -	- - - -	- - - -	1 gal. POT	MIN. 2 YRS. GTH.	500mm
bbb	822	HEMEROCALLIS 'STELLA D'ORO'	STELLA D'ORO DAYLILY	- - - -	- - - -	- - - -	1 gal. POT	MIN. 2 YRS. GTH.	400mm
ccc	268	CALAMAGROSTIS X ACUTIFLORA 'KARL FOERSTER'	KARL FOERSTER FEATHER REED GRASS	- - - -	- - - -	- - - -	1 gal. POT	MIN. 2 YRS. GTH.	800mm
ddd	821	SEDUM SPECTABILIS 'AUTUMN JOY'	AUTUMN JOY SEDUM	- - - -	- - - -	- - - -	1 gal. POT	MIN. 2 YRS. GTH.	400mm
eee	766	HOSTA 'PATRIOT'	PATRIOT HOSTA	- - - -	- - - -	- - - -	1 gal. POT	MIN. 2 YRS. GTH.	400mm
fff	601	PENNISETUM ALOPECUROIDES 'MOUDRY'	BLACK FOUNTAIN GRASS	- - - -	- - - -	- - - -	1 gal. POT	MIN. 2 YRS. GTH.	400mm

* HYDROSEED MIX:

SEED MIXTURE AS SUPPLIED BY ONTARIO SEED COMPANY (1-800-465-5849) OR APPROVED EQUAL. APPLIED AT THE RATE SHOWN BELOW FOR THE MIX TYPE AND IN ACCORDANCE WITH THE SUPPLIER'S INSTRUCTIONS.

HYDROSEED TYPE A - OSC 8125 NATIVE PRAIRIE LOW GROW GRASS MIXTURE

CREEPING RED FESCUE (<i>Festuca rubra</i>)	55%
KENTUCKY BLUEGRASS (<i>Poa pratensis</i>)	27%
PERENNIAL RYEGRASS (<i>Lolium perenne</i>)	15%
WHITE CLOVER (<i>Trifolium repens</i>)	3%

SEED RATE: 180kg/ha

NURSE CROP

ANNUAL RYE GRASS
SEED RATE: 22kg/h

* TERRASEED MIX:

TERRASEED TYPE A: OSC 7070 ULTRA LAWN SEED MIXTURE

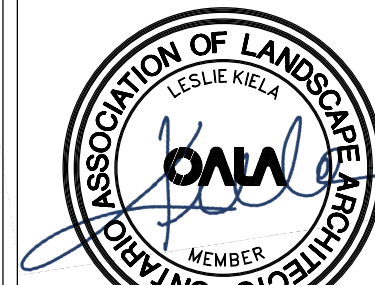
NURSE CROP

ANNUAL RYE GRASS
SEED RATE: 22kg/h

TOWN OF CALEDON
PLANNING
RECEIVED
March 17, 2021

V1	MAR 11 2021	ISSUED FOR FIRST SUBMISSION	AV/LK
no.	date	version	by

All information hereon to be checked and verified at the site and any discrepancies must be reported to and clarified by the landscape architect before commencing work. All drawings, specifications, details, digital information, etc., prepared by the landscape architect are instruments of service and as such are his property and must be returned at his request.



ALEXANDER BUDREVICS
LANDSCAPE ARCHITECTS

895 Don Mills Road, Second Tower, Suite 212
Toronto, Ontario, Canada, M3C 1W3

416.444.5201
416.444.5208

www.budrevics.com

project
PROPOSED INDUSTRIAL DEVELOPMENT
12035 DIXIE ROAD
CALEDON, ONTARIO
TRIBAL PARTNERS CANADA INC.

drawing

LANDSCAPE DETAILS

date	MARCH 3, 2021	drawn	KM
scale*	AS SHOWN	file	3416 D1 V1-210311
direction		project no.	3416
		sheet no.	D-1

*NOTED SCALE IS APPLICABLE ONLY WHEN PRINTED ON ARCH D (34"x36") SIZE SHEET