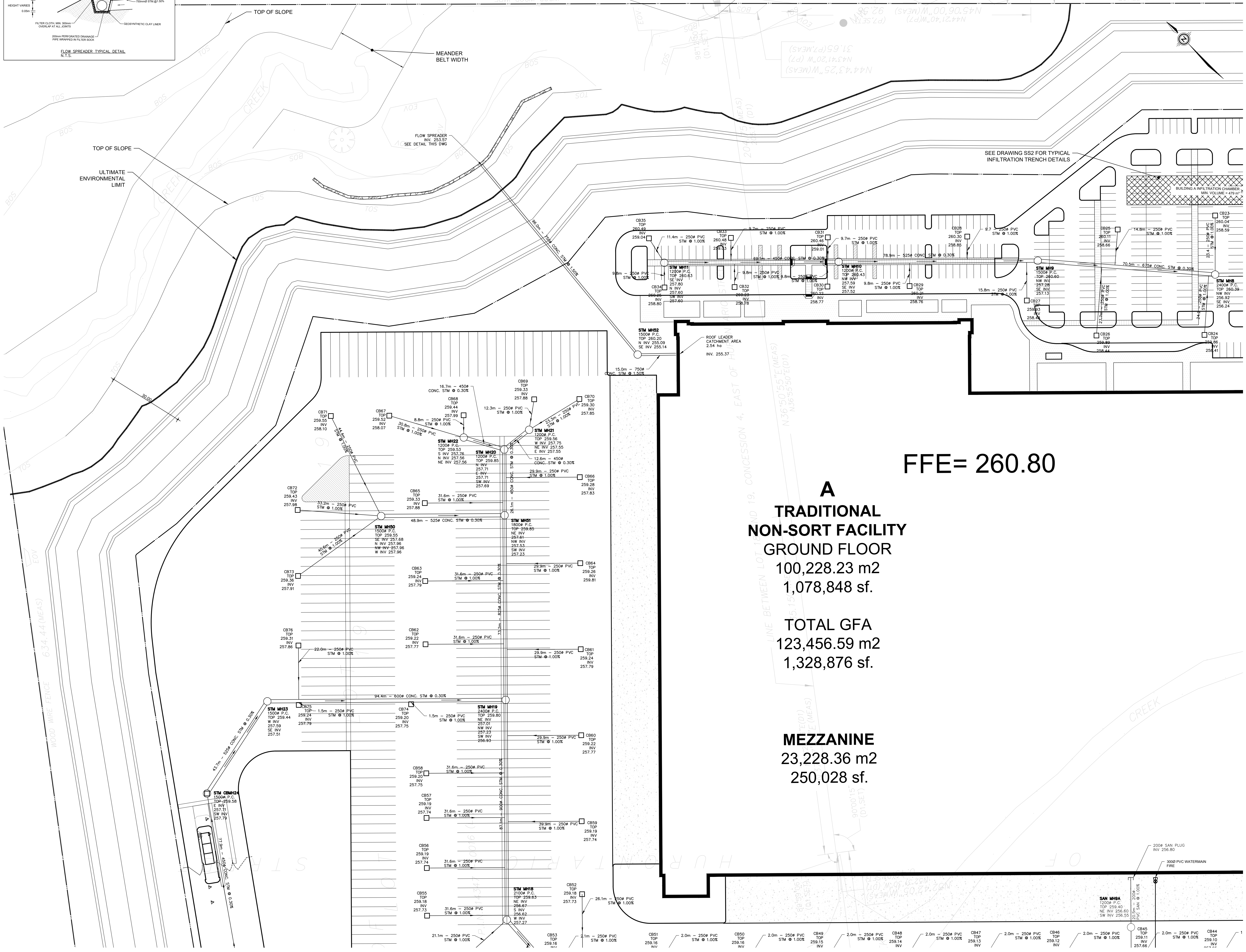


- LEGEND**
- EX VC EXISTING VALVE & CHAMBER
  - EX HYD EXISTING HYDRANT
  - EX SAN MH EXISTING SANITARY MANHOLE
  - EX STM MH EXISTING STORM MANHOLE
  - EX CB EXISTING CATCHBASIN
  - SANITARY MANHOLE
  - STORM MANHOLE
  - CATCHBASIN
  - VALVE AND BOX
  - HYDRANT AND VALVE
  - LIMIT OF PROPERTY

- REGION OF PEEL NOTES:**
1. ALL MATERIALS AND CONSTRUCTION METHODS MUST CORRESPOND TO THE CURRENT PEEL PUBLIC WORKS STANDARDS AND SPECIFICATIONS.
  2. WATERMAIN AND/OR WATER SERVICE MATERIALS 100mm AND LARGER MUST BE PVC DR-18. SIZE 50mm AND SMALLER MUST BE COPPER TYPE 'K'.
  3. WATERMANS AND/OR SERVICES ARE TO HAVE A MINIMUM COVER OF 1.2m WITH A MINIMUM HORIZONTAL SPACING OF 1.2m FROM THEMSELVES AND ALL OTHER SERVICES.
  4. PROVISIONS FOR FLUSHING WATER LINE PRIOR TO TESTING, ETC., MUST BE PROVIDED WITH AT LEAST A DOWNER OUTLET ON 100mm AND LARGER LINES. COPPER LINES ARE TO HAVE FLUSHING POINTS AT THE END, THE SAME SIZE AS THE LINE. THEY MUST ALSO BE HOSED OR PIPES TO ALLOW WATER TO DRAIN ONTO A PARKING LOT OR DOWN A DRAIN, ON FIRE LINES. FLUSHING OUTLET TO BE 100mm MINIMUM ON A HYDRANT.
  5. ALL CURB STOPS TO BE 3.0m OFF THE FACE OF THE BUILDING UNLESS NOTED OTHERWISE.
  6. HYDRANT AND VALVE SET TO REGION STANDARD 1-6-1 DIMENSION 'A' (0.7m) & 'B' (0.9m) AND TO HAVE PUMPER NOZZLE.
  7. WATERMANS TO BE INSTALLED TO GRADES SHOWN ON APPROVED SITE PLAN. COPY OF GRADE SHEET MUST BE SUPPLIED TO INSPECTOR PRIOR TO COMMENCEMENT OF WORK, WHERE REQUESTED BY INSPECTOR.
  8. WATERMANS MUST HAVE A VERTICAL CLEARANCE OF 0.3m OVER AND 0.5m UNDER SERVICES AND ALL OTHER UTILITIES WHEN CROSSING.
  9. ALL PROPOSED WATER PIPING MUST BE ISOLATED FROM EXISTING LINES IN ORDER TO ALLOW INDEPENDENT PRESSURE TESTING AND COLOR-MARKING FROM EXISTING SYSTEMS.
  10. ALL LIVE TAPPING AND OPERATION OF REGION WATER VALVES SHALL BE ARRANGED THROUGH THE REGIONAL INSPECTOR ASSIGNED, OR BY CONTACTING THE OPERATIONS AND MAINTENANCE DIVISION.
  11. LOCATION OF ALL EXISTING UTILITIES IN THE FIELD TO BE ESTABLISHED BY THE CONTRACTOR.
  12. THE CONTRACTOR SHALL BE SOLELY RESPONSIBLE FOR LOCATES, EXPOSING, SUPPORTING AND PROTECTING OF ALL UNDERGROUND OVERHEAD UTILITIES AND STRUCTURES EXISTING AT THE TIME OF CONSTRUCTION IN THE AREA OF THEIR WORK, WHETHER SHOWN ON THE PLANS OR NOT, AND FOR ALL REPAIRS AND CONSEQUENCES RESULTING FROM DAMAGE TO SAME.
  13. THE CONTRACTOR SHALL BE SOLELY RESPONSIBLE TO GIVE 72 HOURS WRITTEN NOTICE TO UTILITIES PRIOR TO CROSSING SUCH UTILITIES, FOR THE PURPOSE OF INSPECTION BY THE CONCERNED UTILITY. THIS INSPECTION WILL BE FOR THE DURATION OF THE CONSTRUCTION, WITH THE CONTRACTOR RESPONSIBLE FOR ALL COSTS ARISING FROM SUCH INSPECTION.
  14. ALL PROPOSED WATER PIPING MUST BE ISOLATED THROUGH A TEMPORARY CONNECTION THAT SHALL INCLUDE AN APPROPRIATE CROSS-CONNECTION CONTROL DEVICE, CONSISTENT WITH THE DEGREE OF HAZARD, FOR BACKFLOW PREVENTION OF THE ACTIVE DISTRIBUTION SYSTEM, CONFORMING TO REGION OF PEEL STANDARDS 1-7-1 OR 1-7-8.



SEE DWG SS2

SEE DWG SS3

1	SUBMITTED FOR S.P.A.	J.G. MAR. 11/21
NL	REVISIONS TO DRAWING	BY DATE APRR
ALL PREVIOUS ISSUES OF THIS DRAWING ARE SUPERSEDED		
CLIENT		
TRIBAL PARTNERS CANADA INC.		
MUNICIPALITY		
TOWN OF CALEDON		
PROJECT TITLE		
12035 DIXIE ROAD		
SHEET TITLE		
SITE SERVICING PLAN		
CONSULTANT		
wsp		
100 Concession Valley Dr. West, Toronto, ON Canada L3T 0A1 © 2021 WSP   416-491-2000   www.wsp.com		
DESIGNED	DRAWN	CHECKED
J.G.	10/12 CAD	A.W.
SCALE	DATE	PROJECT NUMBER
1:500	MAR 2021	20M-01429
DWG NUMBER		SS1