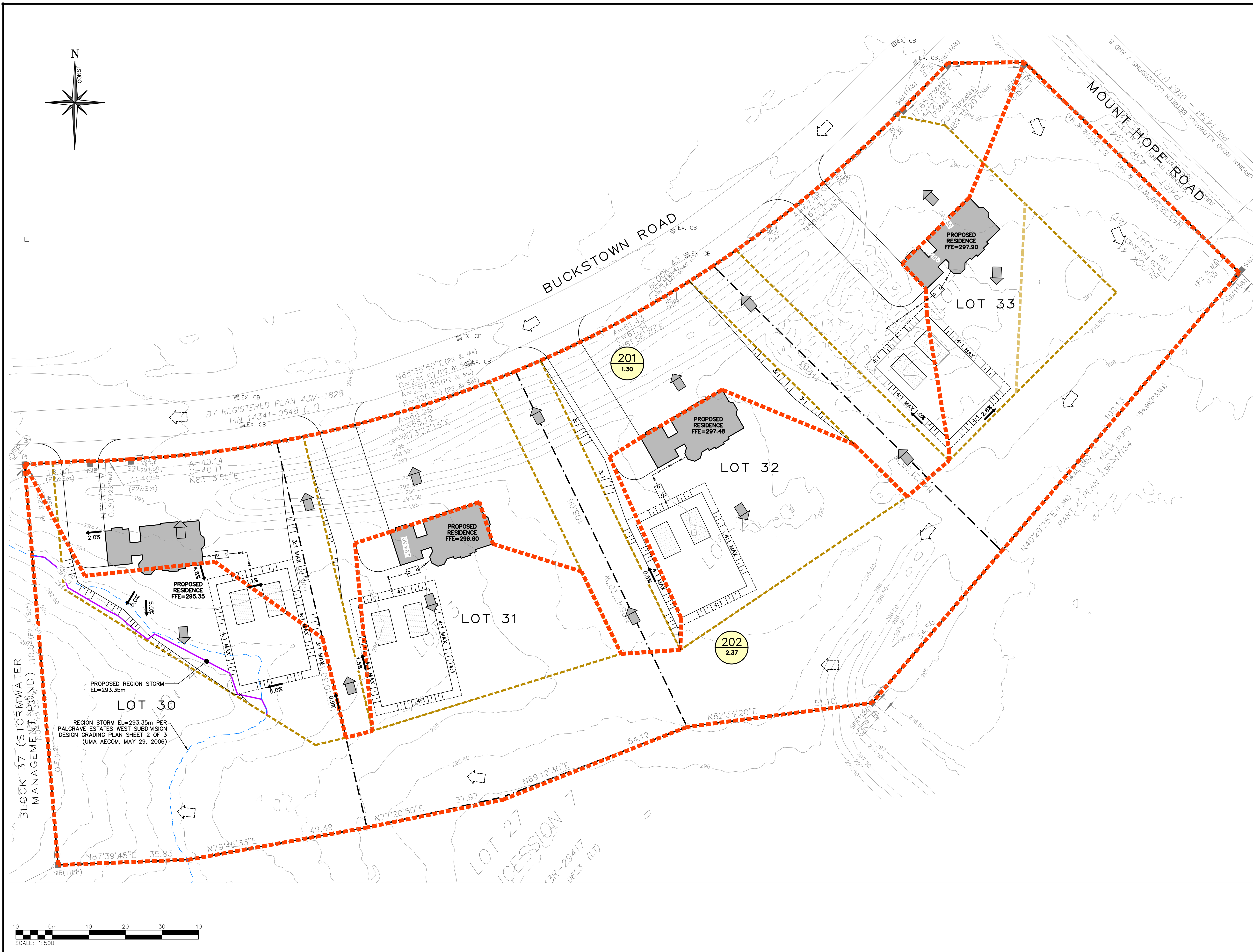


**LEGEND**

- PROPERTY LINE
- EXISTING CONTOUR (0.5m)
- EXISTING CONTOUR (1.0m)
- REGION STORM EL=293.35m PER PALGRAVE ESTATES WEST SUBDIVISION DESIGN GRADING PLAN SHEET 2 OF 3 (UMA AECOM, MAY 29, 2006)
- PROPOSED REGIONAL STORM EL = 293.35m
- EXISTING MAJOR OVERLAND FLOW DIRECTION
- PROPOSED MAJOR OVERLAND FLOW DIRECTION
- STORM DRAINAGE CATCHMENT
- CATCHMENT I.D.
- AREA (ha) | RUNOFF COEFFICIENT



1	REISSUED FOR FIRST SUBMISSION	2022/JUL/25
0	ISSUED FOR FIRST SUBMISSION	2022/MAY/06
No.	ISSUE / REVISION	YYYY/MM/DD

**ELEVATION NOTE:**  
ELEVATIONS SHOWN ON THIS PLAN ARE DERIVED FROM EQUATOR STUDIOS LIDAR DATA DATED: 2022/APR/04

**SURVEY NOTES:**  
SURVEY COMPLETED BY YOUNG & YOUNG SURVEYING INC. (2022/APR/01)  
PROJECT No. 21-87589  
BEARINGS ARE UTM GRID, DERIVED FROM RTN OBSERVATIONS  
UTM ZONE 17, NAD83 (ORIGINAL) (1997.0)  
DISTANCES ARE GROUND AND CAN BE CONVERTED TO GRID BY MULTIPLYING BY THE COMBINED SCALE FACTOR OF 0.9996673

**DRAWING NOTES:**  
THIS DRAWING IS THE EXCLUSIVE PROPERTY OF C.F. CROZIER & ASSOCIATES INC. AND THE REPRODUCTION OF ANY PART OF IT WITHOUT PRIOR WRITTEN CONSENT OF THIS OFFICE IS STRICTLY PROHIBITED.  
THE CONTRACTOR SHALL VERIFY ALL DIMENSIONS, LEVELS, AND DATUMS ON SITE AND REPORT ANY DISCREPANCIES OR OMISSIONS TO THIS OFFICE PRIOR TO CONSTRUCTION.  
THIS DRAWING IS TO BE READ AND UNDERSTOOD IN CONJUNCTION WITH ALL OTHER PLANS AND DOCUMENTS APPLICABLE TO THIS PROJECT. DO NOT SCALE THIS DRAWING.  
ALL EXISTING UNDERGROUND UTILITIES TO BE VERIFIED IN THE FIELD BY THE CONTRACTOR PRIOR TO CONSTRUCTION.

Project  
**ANGELSTONE TOURNAMENTS INC.**  
**LOTS 30 - 33**  
**TOWN OF PALGRAVE**

Drawing  
**POST-DEVELOPMENT DRAINAGE PLAN**

2800 HIGH POINT DRIVE  
SUITE 100  
MILTON, ON L9T 6P4  
905-875-0026 T  
905-875-4915 F  
WWW.CFCROZIER.CA

Drawn	S.O.	Design	P.S.	Project No.	<b>2262-6328</b>
Check	P.S.	Check	T.E.	Scale	1:500 Dwg

