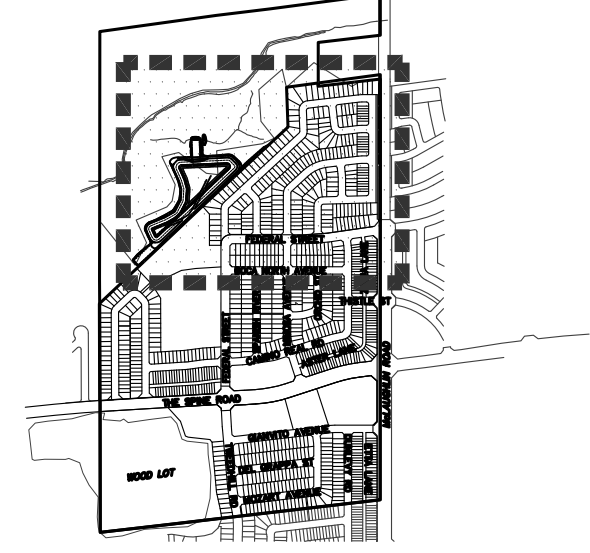


**GENERAL NOTES**  
 VERIFY ALL DIMENSIONS.  
 DO NOT SCALE DRAWINGS.  
 REPORT ANY DISCREPANCIES, DISCOVERED ERRORS, OR OMISSIONS TO THE LANDSCAPE ARCHITECT BEFORE PROCEEDING.  
 IT IS ADVISED THAT CONTRACTORS CONTACT THE LANDSCAPE ARCHITECT PRIOR TO CONSTRUCTION TO ENSURE THE USE OF THE LATEST REVISED DRAWINGS.  
 DRAWINGS AND SPECIFICATIONS ARE THE PROPERTY OF THE LANDSCAPE ARCHITECT.



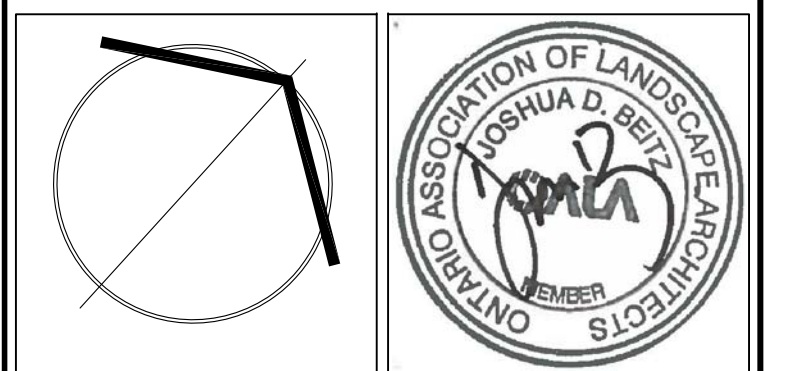
KEY PLAN NTS.

*Matthew Gehres*  
**MATTHEW C. GEHRES**  
 International Society of Arboriculture  
 Certified Arborist #ON-1114A  
 Date: DECEMBER 11, 2020



1	DEC. 11/2020	ISSUED FOR DP SUBMISSION	J.B.
No.	DATE	REVISION	BY

It is the responsibility of the Contractor and/or Owner to ensure that the drawings with the latest revisions are used for construction.



**SBK** 5770 HURONTARIO STREET, SUITE 320  
 MISSISSAUGA, ONTARIO, L5R 3G5  
 T: 416.695.4949 F: 905.712.3101  
 WWW.STRYBOS.COM  
**STRYBOS BARRON KING**  
 LANDSCAPE ARCHITECTURE

PROJECT: **MAYFIELD STATION RESIDENTIAL SUBDIVISION STAGE 2**  
 NORTH OF MAYFIELD RD. & WEST McLAUGHLIN RD.  
 TOWN OF CALEDON  
 BROOKVALLEY PROJECT MANAGEMENT INC.

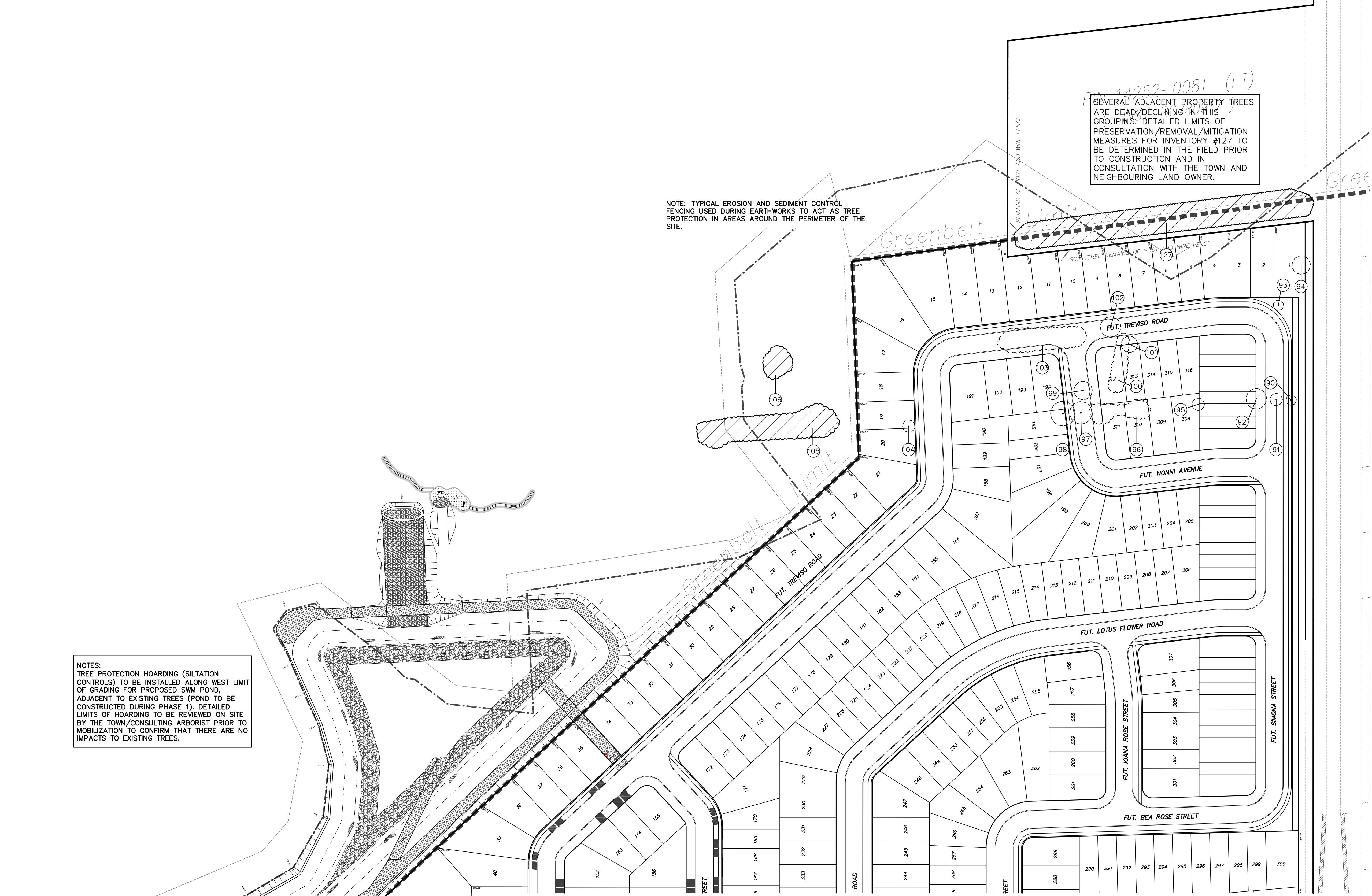
DRAWING TITLE: **TREE INVENTORY AND PRESERVATION PLAN**

SCALE: 1 : 1000	PROJECT No. 16-4882
DATE: NOV. 27, 2020	DRAWING No. V101
DRAWN BY: P.H.	CHECKED BY: J.B.

**NOTES:**  
 TREE PROTECTION HOARDING (SILTATION CONTROLS) TO BE INSTALLED ALONG WEST LIMIT OF GRADING FOR PROPOSED SWM POND, ADJACENT TO EXISTING TREES (POND TO BE CONSTRUCTED DURING PHASE 1). DETAILED LIMITS OF HOARDING TO BE REVIEWED ON SITE BY THE TOWN/CONSULTING ARBORIST PRIOR TO MOBILIZATION TO CONFIRM THAT THERE ARE NO IMPACTS TO EXISTING TREES.

**NOTE:** TYPICAL EROSION AND SEDIMENT CONTROL FENCING USED DURING EARTHWORKS TO ACT AS TREE PROTECTION IN AREAS AROUND THE PERIMETER OF THE SITE.

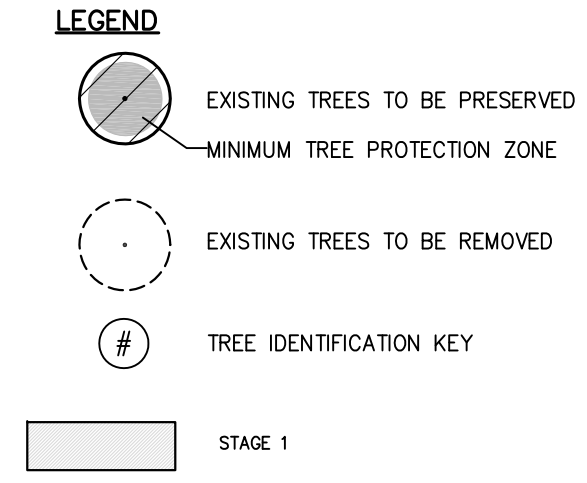
14252-0081 (LT)  
 SEVERAL ADJACENT PROPERTY TREES ARE DEAD/DECLINING IN THIS GROUPING. DETAILED LIMITS OF PRESERVATION/REMOVAL/MITIGATION MEASURES FOR INVENTORY #127 TO BE DETERMINED IN THE FIELD PRIOR TO CONSTRUCTION AND IN CONSULTATION WITH THE TOWN AND NEIGHBOURING LAND OWNER.



**EXISTING TREE INVENTORY**

KEY	SPECIES	CALIPER IN (cm)	CROWN IN (m)	HEALTH	STRUCTURE	COMMENTS	PRESERVATION	MIN. TPZ	KEY
88	BUR OAK	91.0	15.0	GOOD	GOOD FORM	MULTIPLE LEADERS, SOME BROKEN BRANCHES.	REMOVE	6	88
90	BLACK LOCUST	45.0	5.0	POOR	MULTI-STEMMED	85% DEAD	REMOVE	3	90
91	BLACK LOCUST	35.0	6.0	POOR	MULTIPLE LEADERS	60% DEAD, DECLINING	REMOVE	2.4	91
92	BLACK LOCUST		10.0	DEAD			REMOVE		92
93	WHITE SPRUCE	12.0	5.0	GOOD	GOOD FORM	BRANCHING TO GRADE	REMOVE	1.8	93
94	WHITE BIRCH	11-15	9.0	GOOD	MULTI-STEMMED	CROWDED AT BASE	REMOVE	1.8	94
95	BLACK LOCUST	25.0	6.0	FAIR	GOOD FORM	DIEBACK ON LOWER BRANCHES, SOME DIEBACK IN CROWN	REMOVE	1.8	95
96	NATURALIZED DECIDUOUS ROW	10-30	VARIES	POOR-FAIR	VARIES	NATURALIZED, DECIDUOUS ROW COMPOSED OF GREEN ASH AND BLACK LOCUST. MANY ASH TREES ARE EITHER DEAD OR IN DECLINING. THE BLACK LOCUST IS IN FAIR CONDITION	REMOVE	2.4	96
97	GREEN ASH	50.0	11.0	POOR	DOUBLE LEADER	OPEN FORM, CROWN DIEBACK, MAY BE IN A GENERAL STATE OF DECLINE	REMOVE	3	97
98	PEAR	65.0	12.0	GOOD	ASYMMETRICAL FORM	CROWDING BY ADJACENT TREE, INCLUDED BARK, WEAK CROTCH, DECAY ON STEM, SOME INNER CROWN DIEBACK AND DECAY	REMOVE	4.2	98
99	GREEN ASH	35.0	9.0	POOR	DOUBLE LEADER	ONE SIDED FORM, LEANING, DIEBACK THROUGHOUT	REMOVE	2.4	99
100	CEDAR ROW	12-25	VARIES	FAIR	IRREGULAR FORM	SCATTERED ROW OF ONE SIDED EASTERN WHITE CEDAR TREES, SOME CROWNS HAVE BEEN ELEVATED	REMOVE	1.8	100
101	MANITOBA MAPLE	10-25	8.0	GOOD	MULTI-STEMMED	ONE SIDED FORM, CROWDING BY ADJACENT TREE, DENSE CLUSTER OF SEVERAL STEMS, BRANCHING TO GRADE	REMOVE	1.8	101
102	NORWAY SPRUCE	45.0	10.0	GOOD	GOOD FORM	BRANCHING TO GRADE, SLIGHTLY CROWDING BY ADJACENT TREE ON NORTH SIDE	REMOVE	3	102
103	NORWAY SPRUCE ROW	20-40	VARIES	FAIR	VARIES	ROW OF SEVERAL NORWAY SPRUCE TREES MATURE TO SEMI-MATURE TO MATURE, SPACED APPROX 2.6m O/C. SOME TREES EXHIBIT INTERNAL TWIG TIP DIEBACK, BRANCHING TO GRADE. OVERALL, THESE TREES ARE IN GENERALLY FAIR CONDITION	REMOVE	2.4	103
104	BUR OAK	23.0	6.0	GOOD	GOOD FORM	MINOR DIEBACK ON LOWER BRANCHES	REMOVE	1.8	104
105	GREEN ASH ROW	25-45	VARIES	GOOD	MULTI-STEMMED	DENSE, MULTI-STEMMED ROW OF SEVERAL TREES BRANCHING TO GRADE, ONE SIDED FORM, SOME INTERNAL CROWN DIEBACK	PRESERVE	3	105
106	POPLAR STAND	WHP-20	GOOD	MULTI-STEMMED		DENSE CLUSTERS OF SEVERAL IMMATURE TREES SAPLINGS FLANK THE OUTER EDGE OF THE STAND	PRESERVE	1.8	106

**NOTE:** ALL PHASE 1 TREE PRESERVATION/REMOVAL REQUIREMENTS REFER TO PHASE 1 SUBDIVISION STREETScape PLANS BY SBK - PROJECT #4882.



PRESERVE (AS REQUIRED)  
 REMOVE (AS REQUIRED)