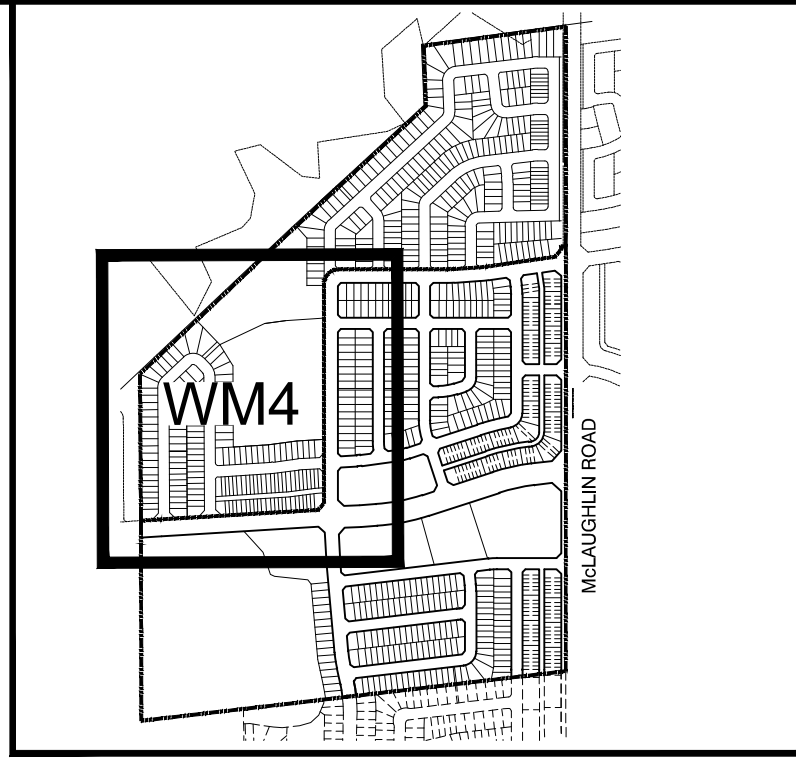
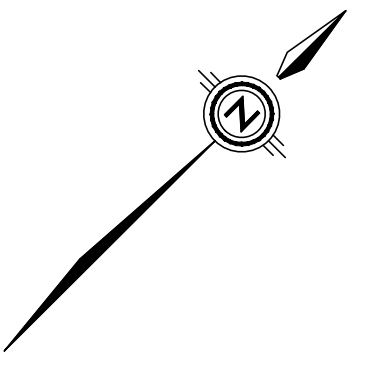
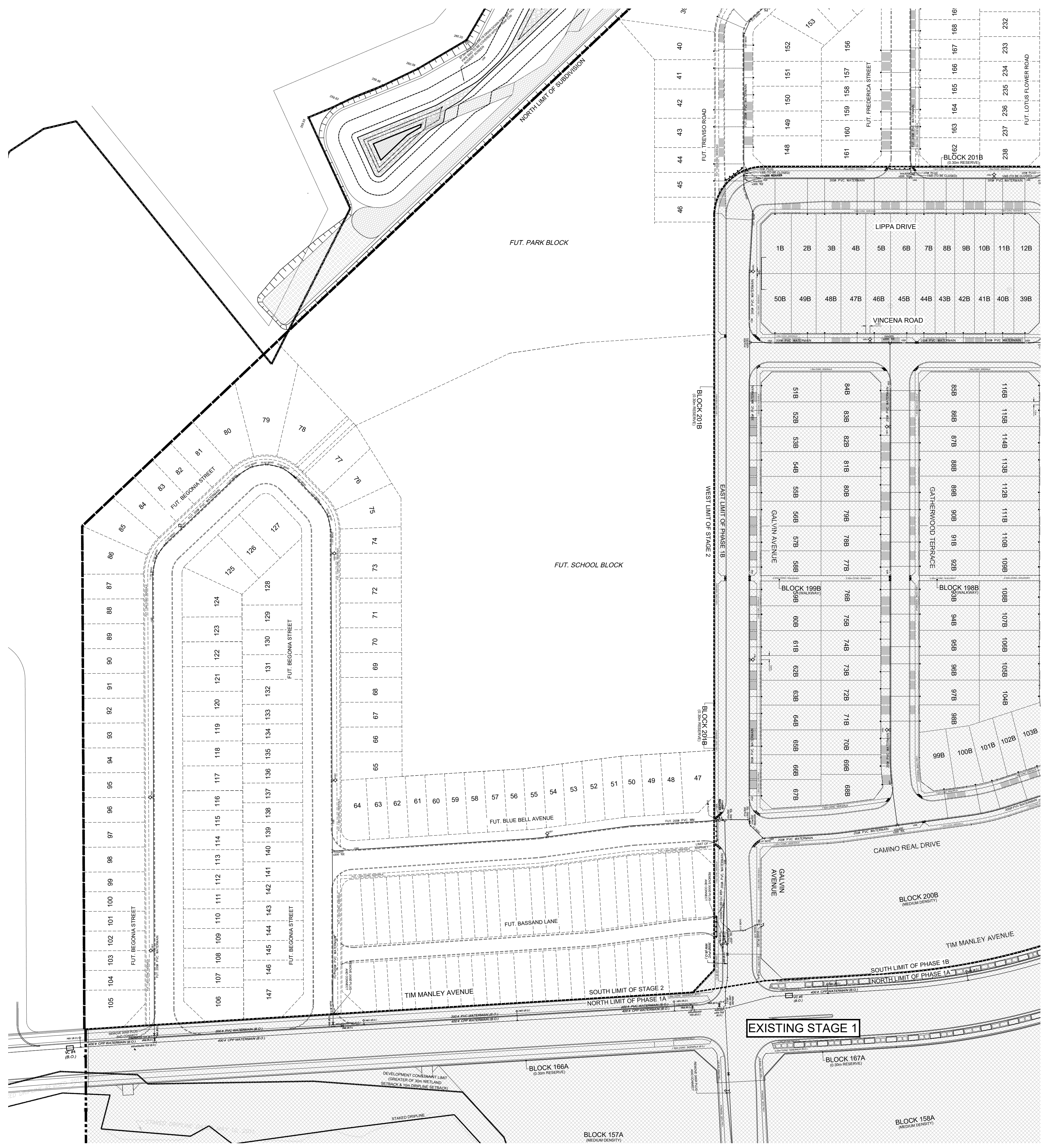


LEGEND

- STORM MANHOLE
- SANITARY MANHOLE
- CATCHBASIN
- ▣ CATCHBASIN WITH INLET CONTROL DEVICE
- ▤ DOUBLE CATCHBASIN
- ▥ DOUBLE CATCHBASIN WITH INLET CONTROL DEVICE
- CATCHBASIN MANHOLE
- ◇ HYDRANT & VALVE
- ⊕ VALVE AND BOX
- WATER SERVICE
- ∨ DOUBLE STORM & SANITARY SERVICES
- SINGLE STORM & SANITARY SERVICES
- ▬ DRIVEWAY LOCATION
- DENOTES DEAD END SIGN AND BARRICADE
- ☒ DENOTES COMMUNITY MAILBOX AND PAD AT SIDEWALK SITE (CANADA POST STD. 8413, 8416, 8417 & 8418)
- ☒ DENOTES COMMUNITY MAILBOX AND PAD AT CURB SITE (CANADA POST STD. 8414)
- B BELL OPI
- DENOTES TRANSFORMER
- SL DENOTES LIGHT STANDARD
- TSP DENOTES TRAFFIC SIGNAL POLE
- DENOTES STREETLIGHT PEDESTAL
- UTILITY DUCT REFER TO NOTE 'K' CITY OF BRAMPTON
- ⊙ DENOTES LOT WITH 25mmØ TYPE 'K' WATER SERVICE
- R U/G VAULT GLB 3048
- R A/G PEDESTAL WITH U/G VAULT
- DEPRESSIONED CURB
- LIMIT OF PHASE 1
- ▨ EXISTING STAGE



KEY PLAN NTS

CONNECTION TO WATERMAIN ON THE SPINE ROAD AND MCLAUGHLIN ROAD TO BE AS PER PEEL STD. 1-7-7/1-7-8.

SEE DWG No. AG3

1	PRELIMINARY ENGINEERING	A.D.R. DEC/4/20
No.	REVISIONS TO DRAWING	BY DATE APPR.
ALL PREVIOUS ISSUES OF THIS DRAWING ARE SUPERSEDED		
CLIENT		
CALEDON DEVELOPMENT #2 LP		
MUNICIPALITY		
 TOWN OF CALEDON		
PROJECT TITLE		
Mayfield West Residential Subdivision Brookvalley - Stage 2		
SHEET TITLE		
WATERMAIN PLAN		
CONSULTANT		
 wsp <small>100 Commerce Valley Dr. West, Thornhill, ON Canada L3T 0A1 T: 905.882.1150 F: 905.882.0055 www.wsp.com</small>		
STAMP		
DESIGNED	DRAWN	CHECKED
J.C.V.	10/12 CAD	A.D.R.
SCALE	DATE	
1:1000	SEPTEMBER 2020	
PROJECT NUMBER	DWG. NUMBER	
12M-00011	WM4	

FILENAME: X:\2019\10\10\2020 Brookvalley Caledon\MUNDOB - General\12M-00011_WM4-5_Stage 2.dwg
 PLOTTED: Dec 18, 2020 - 10:58 AM
 CADD: C:\Users\CALEDON\

SEE DWG No. AG2