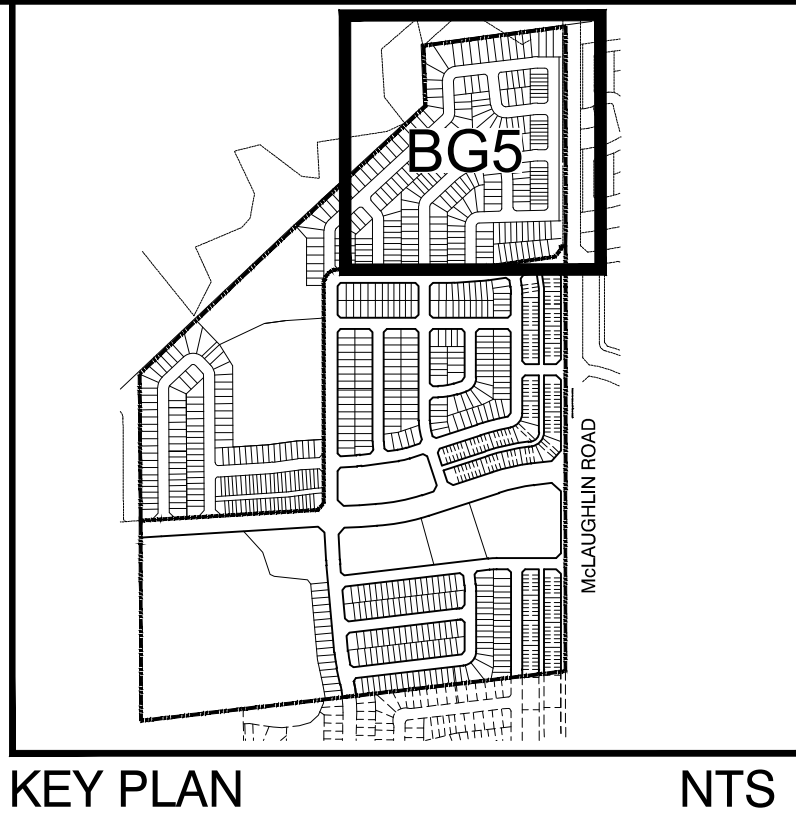
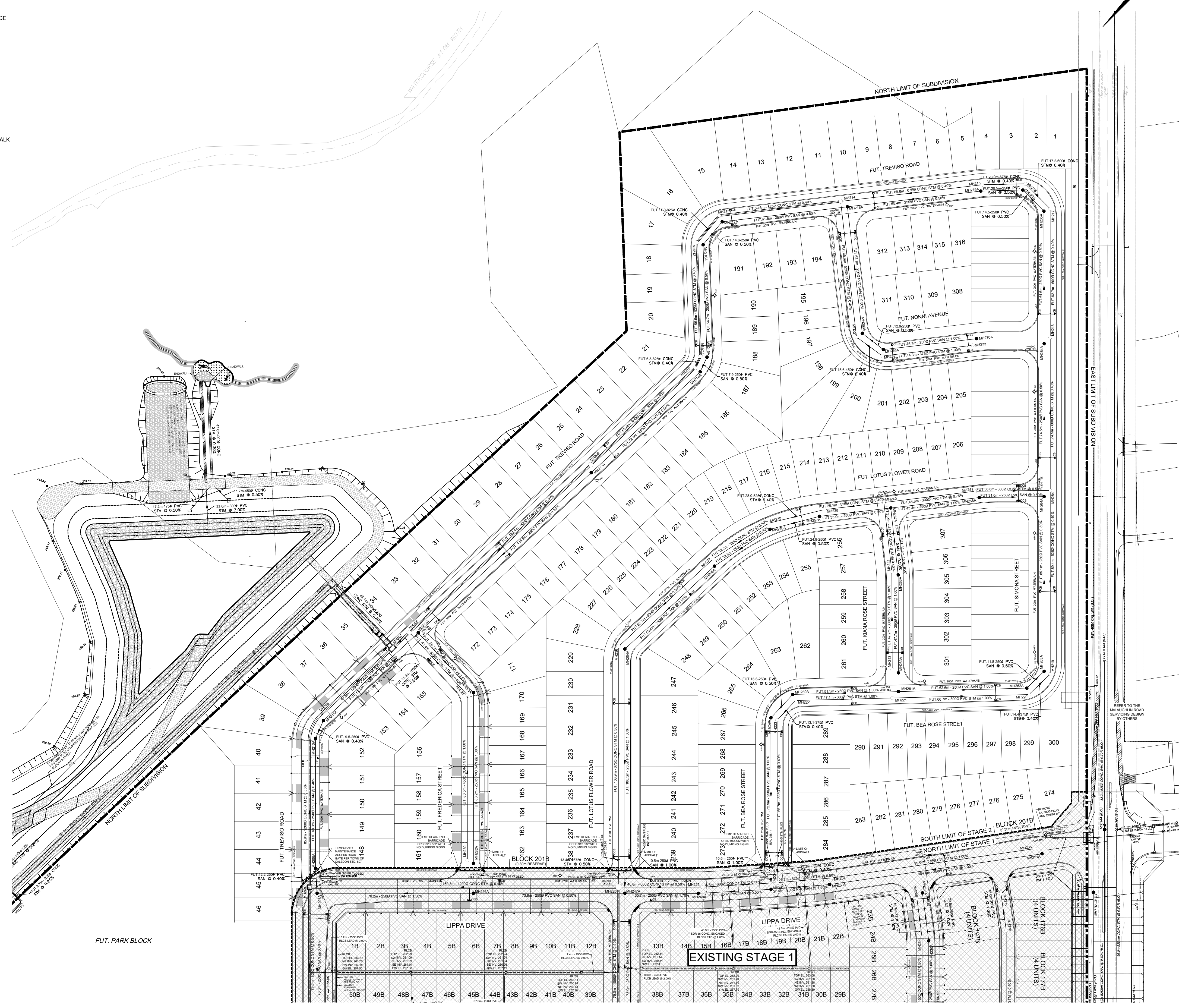


LEGEND

- STORM MANHOLE
- SANITARY MANHOLE
- CATCHBASIN
- ▣ CATCHBASIN WITH INLET CONTROL DEVICE
- ▤ DOUBLE CATCHBASIN
- ▥ DOUBLE CATCHBASIN WITH INLET CONTROL DEVICE
- CATCHBASIN MANHOLE
- ◇ HYDRANT & VALVE
- ⊕ VALVE AND BOX
- WATER SERVICE
- ∨ DOUBLE STORM & SANITARY SERVICES
- ∩ SINGLE STORM & SANITARY SERVICES
- ▬ DRIVEWAY LOCATION
- DENOTES DEAD END SIGN AND BARRICADE
- ⊠ DENOTES COMMUNITY MAILBOX AND PAD AT SIDEWALK SITE (CANADA POST STD. 8413, 8416, 8417 & 8418)
- ⊡ DENOTES COMMUNITY MAILBOX AND PAD AT CURB SITE (CANADA POST STD. 8414)
- BELL OPI
- DENOTES TRANSFORMER
- SL DENOTES LIGHT STANDARD
- TSP DENOTES TRAFFIC SIGNAL POLE
- DENOTES STREETLIGHT PEDESTAL
- UTILITY DUCT REFER TO NOTE 'K' CITY OF BRAMPTON
- ⊙ DENOTES LOT WITH 25mmØ TYPE 'K' WATER SERVICE
- R U/G VAULT GLB 3048
- R A/G PEDESTAL WITH U/G VAULT
- ▬ DEPRESSED CURB
- LIMIT OF SUBDIVISION
- LIMIT OF STAGE
- ▨ EXISTING STAGE



KEY PLAN NTS

1	PRELIMINARY ENGINEERING	A.D.R.	DEC/4/20
No.	REVISIONS TO DRAWING	BY	DATE APPR.
ALL PREVIOUS ISSUES OF THIS DRAWING ARE SUPERSEDED			

CLIENT
CALEDON DEVELOPMENT #2 LP



PROJECT TITLE
**Mayfield West Residential Subdivision
Brookvalley - Stage 2**

SHEET TITLE
**BELOW GROUND
SERVICES PLAN**

CONSULTANT
wsp
100 Commerce Valley Dr. West, Thornhill, ON Canada L3T 0A1
t: 905.882.1150 e: 905.882.0955 www.wsp.com

STAMP
Town of Caledon
APPROVED AS NOTED
This approval constitutes a general review and does not certify dimensional accuracy.
This approval is subject to further certification of the "as constructed" works by a registered Professional Engineer of the Province of Ontario.
Date: _____
Approved by: _____

DESIGNED J.C.V.	DRAWN 10/12 CAD	CHECKED A.D.R.
SCALE 1:1000	DATE SEPTEMBER 2020	
PROJECT NUMBER 12M-00011	DWG. NUMBER BG5	

SEE DWG No. BG3

FILENAME: X:\2019\10\10\2020 Brookvalley Caledon\MUNDOCK - General\12M00011_BG5LA_Stage 2.dwg
 DATE: 10/13/2020 11:28:00 AM
 USER: C:\CAJ\10298