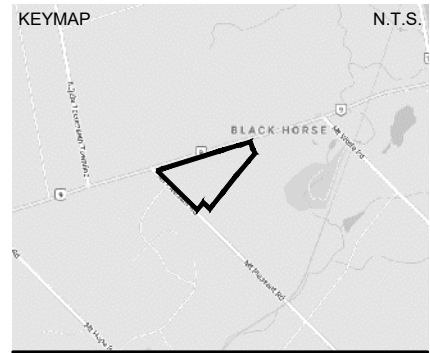
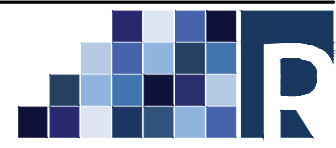
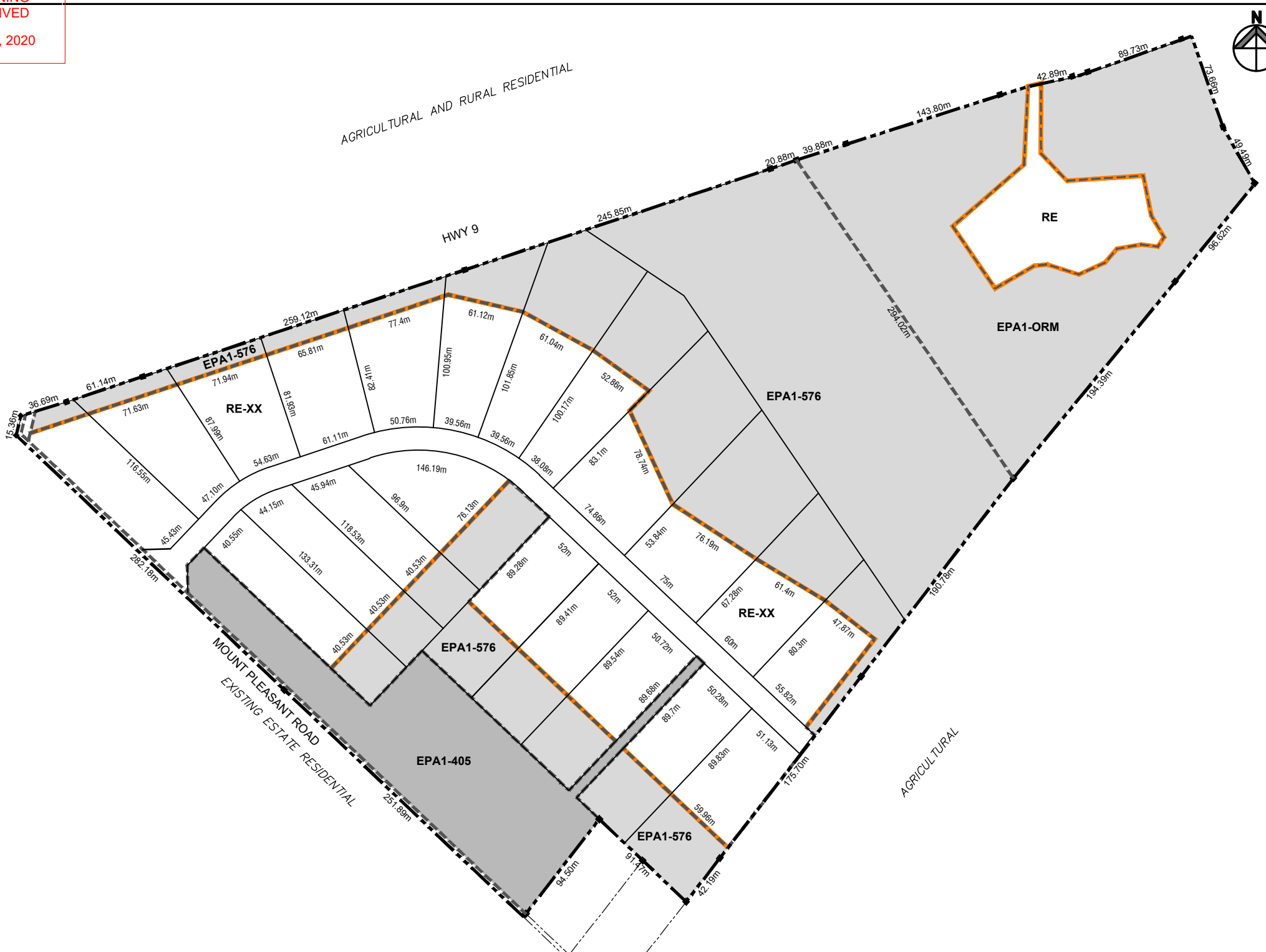


TOWN OF CALEDON
 PLANNING
 RECEIVED
 May 04, 2020



- LEGEND:
- LANDS SUBJECT TO THIS BY-LAW
 - ZONE BOUNDARY
 - STRUCTURAL ENVELOPE



Robert Russell Planning Consultants Inc.
 32 Albert St. Georgetown, Ont. L7G 2B3

PART OF LOTS 28 AND 29
 CONCESSION 9 (ALBION), DESIGNATED
 as PART 2 on PLAN 43R-21080
 TOWN OF CALEDON
 REGIONAL MUNICIPALITY OF PEEL

SCALE: 1:3600

DATE: APRIL 2020

TITLE:
ZONE MAP ---
SCHEDULE 'A' BY-LAW
