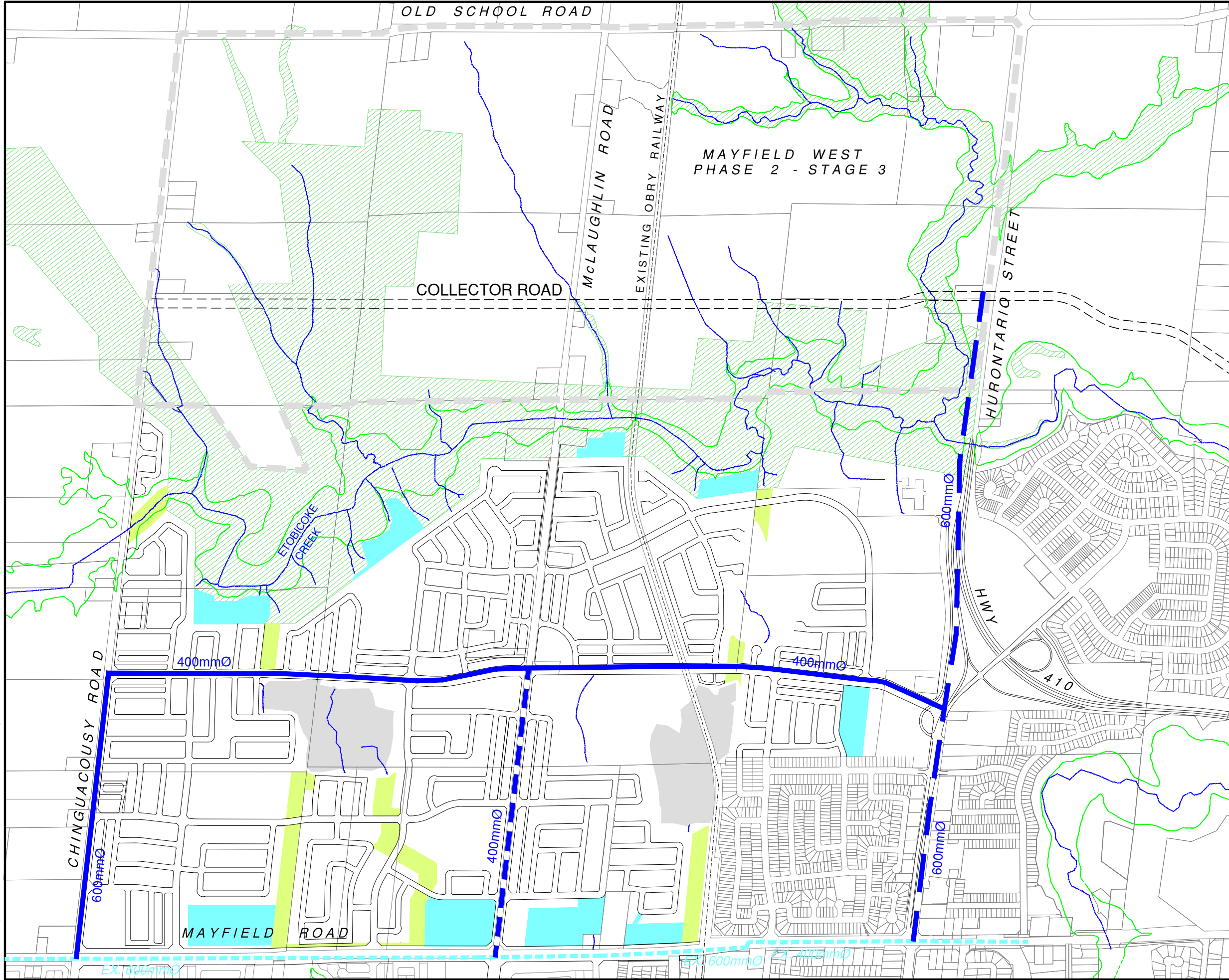


\\C:\cdfservers\datafiles\CD-2015W-FILES\W15113 Mayfield West Phase 2\W15113-WATER-WASTEWATER-SERVICING-STUDY-FEBRUARY-19-2019\W15113-FIGURE-3-EXISTING-WATERMAIN-INFRASTRUCTURE-PLAN-FEBRUARY



TOWN OF CALEDON
PLANNING
RECEIVED
July 15, 2022

LEGEND:

- MAYFIELD WEST PHASE 2 - STAGE 3 BOUNDARY
- APPROVED DISTRIBUTION FEEDERMAIN (WDS) 2018. (REGION OF PEEL, WATER DC MAP 2018)
- WATERMAIN 400mm-2400mmØ EXISTING OR UNDER CONSTRUCTION (REGION OF PEEL, WATER DC MAP 2018)
- PROPOSED DISTRIBUTION FEEDERMAIN (WDS) 2019-2031 (REGION OF PEEL, WATER DC MAP 2018)
- EXISTING PRESSURE ZONE 7 TRUNK WATERMAIN
- GREENLANDS
- POTENTIAL FUTURE COLLECTOR ROAD

**MAYFIELD WEST
PHASE 2 - STAGE 3 LANDS
TOWN OF CALEDON**
**EXISTING & PLANNED WATER
INFRASTRUCTURE PLAN**

CADEVCON LIMITED
CONSULTING ENGINEERS AND PLANNERS
TEL (905) 794-0600 FAX (905) 794-0611

DATE	FEB., 19th 2019	PROJECT No.	W15113
DRAWN	S.G.K.	FIGURE No.	FIGURE 3
SCALE	1:12,500		