

- KEY NOTES:
1. INSTALL PRIVATE NEUTRAL TANGENT FRAMING. INSTALL PRIVATE 3PH TANGENT FRAMING. INSTALL 50C3. HYDRO ONE TO INSTALL RMS-SA (27.8KV) RETAIL METERING. DL11-302 1-9S (ION-AUX PS) METER.
 2. INSTALL PRIVATE NEUTRAL DEADEND FRAMING. INSTALL PRIVATE 3PH DEADEND FRAMING. INSTALL 50C3. INSTALL LOAD BREAK. INSTALL PRIMARY RISER.

LEGEND:

----- BY HYDRO ONE

----- BY THIS CONTRACTOR

TOWN OF CALEDON
PLANNING
RECEIVED
November 18th, 2025

powers
brown
archi
ecture

411 Richmond Street E
Suite 206
Toronto, Ontario M5A 3S5
647.931.9787

www.powersbrown.com

PROJECT TITLE

BROCCOLINI AIRPORT
ROAD

A PROJECT FOR
BROCCOLINI REAL
ESTATE GROUP

PLAN LEGEND

h HAMMERSCHLAG + JOFFE INC.

69 Lesmill Road Toronto,
Ontario Canada M3B 2T8
T: (416) 444.9263
F: (416) 444.1463
E: dwg@hamjof.com

OVERALL SITE PLAN LIGHTING

ESP-1 SCALE: 1:1500

Calculation Summary						
Label	Units	Avg	Max	Min	Avg/Min	Max/Min
Building A - Canopy	Fc	8.99	12.4	5.6	1.61	2.21
Building A - Loading Dock	Fc	1.76	8.5	0.7	2.51	12.14
Building A - Parking	Fc	2.28	4.8	0.9	2.53	5.33
Building A - Truck Parking	Fc	2.54	4.5	1.5	1.69	3.00
Building A - Walkway	Fc	3.38	12.3	0.8	4.23	15.38
Building B - Canopy	Fc	8.22	12.1	5.4	1.52	2.24
Building B - Loading Dock	Fc	1.80	8.9	1.1	1.64	8.09
Building B - Parking	Fc	2.36	5.0	0.8	2.95	6.25
Building B - Truck Parking	Fc	2.61	4.0	0.7	3.73	8.57
Building B - Walkway	Fc	3.21	9.8	0.7	4.59	14.00
Driveway	Fc	1.28	7.6	0.6	2.13	12.67
Entrances	Fc	7.10	13.9	2.5	2.84	5.56
Building A - Accessible Parking	Fc	2.67	4.3	2.0	1.34	2.15
Building B - Accessible Parking	Fc	2.73	4.0	2.0	1.37	2.00

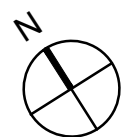
CALCULATION SUMMARY

ESP-1 SCALE: N.T.S.

EXTERIOR LIGHTING SCHEDULE					
TYPE	IMAGE	DESCRIPTION	NOTES	ARRANGEMENT WATTS	LAMP
1P3W		SMALL OUTDOOR LED AREA LIGHT C/W BACKLIGHT SHIELD, REFRACTOR OPTICS, TYPE III WIDE. FINISH TO BE CONFIRMED BY ARCHITECT. MH: 25' - FIXTURE TO BE C/W 22' POLE ON 3' BASE MFR: LSI #: VALS-24L-3W-347-40K7-FINISH-IS, 4000K	FIXTURE MUST BE DARK SKY COMPLIANT WITH ZERO UPLIGHT, IP66 RATED PER IEC 60598-1, SUITABLE FOR -40C TO 50C OPERATION. FIXTURE MUST HAVE FIELD REPLACEABLE LED ENGINE AND BLACK LED LENS APERTURE TO REDUCE SCATTER.	155	LED, 347V 4000K 16902lm
1P3WA		SMALL OUTDOOR LED AREA LIGHT C/W BACKLIGHT SHIELD, REFRACTOR OPTICS, TYPE III WIDE. FINISH TO BE CONFIRMED BY ARCHITECT. MH: 25' - FIXTURE TO BE C/W 22' POLE ON 3' BASE MFR: LSI #: VALS-24L-3W-347-40K7-FINISH-IS, 4000K	FIXTURE MUST BE DARK SKY COMPLIANT WITH ZERO UPLIGHT, IP66 RATED PER IEC 60598-1, SUITABLE FOR -40C TO 50C OPERATION. FIXTURE MUST HAVE FIELD REPLACEABLE LED ENGINE AND BLACK LED LENS APERTURE TO REDUCE SCATTER.	130	LED, 347V 4000K 14639lm
1P4FA		SMALL OUTDOOR LED AREA LIGHT, REFRACTOR OPTICS, TYPE IV FORWARD. FINISH TO BE CONFIRMED BY ARCHITECT. MH: 25' - FIXTURE TO BE C/W 20' POLE ON 5' BASE MFR: LSI #: VALS-24L-4F-347-40K7-FINISH, 4000K	FIXTURE MUST BE DARK SKY COMPLIANT WITH ZERO UPLIGHT, IP66 RATED PER IEC 60598-1, SUITABLE FOR -40C TO 50C OPERATION. FIXTURE MUST HAVE FIELD REPLACEABLE LED ENGINE AND BLACK LED LENS APERTURE TO REDUCE SCATTER.	178	LED, 347V 4000K 23265lm
1P4B		MEDIUM OUTDOOR LED AREA LIGHT C/W REFRACTOR OPTICS, TYPE IV FORWARD. FINISH TO BE CONFIRMED BY ARCHITECT. MH: 25' - FIXTURE TO BE C/W 20' POLE ON 5' BASE MFR: LSI #: VALM-42L-4F-347-40K7-FINISH, 4000K	FIXTURE MUST BE DARK SKY COMPLIANT WITH ZERO UPLIGHT, IP66 RATED PER IEC 60598-1, SUITABLE FOR -40C TO 50C OPERATION. FIXTURE MUST HAVE FIELD REPLACEABLE LED ENGINE AND BLACK LED LENS APERTURE TO REDUCE SCATTER.	261	LED, 347V 4000K 37199lm
1P5		SMALL OUTDOOR LED AREA LIGHT C/W BACKLIGHT SHIELD, REFRACTOR OPTICS, TYPE V. FINISH TO BE CONFIRMED BY ARCHITECT. MH: 25' - FIXTURE TO BE C/W 22' POLE ON 3' BASE MFR: LSI #: VALS-24L-5Q-347-40K7-FINISH, 4000K	FIXTURE MUST BE DARK SKY COMPLIANT WITH ZERO UPLIGHT, IP66 RATED PER IEC 60598-1, SUITABLE FOR -40C TO 50C OPERATION. FIXTURE MUST HAVE FIELD REPLACEABLE LED ENGINE AND BLACK LED LENS APERTURE TO REDUCE SCATTER.	155	LED, 347V 4000K 23487lm
1PAM		SMALL OUTDOOR LED AREA LIGHT C/W BACKLIGHT SHIELD, REFRACTOR OPTICS, TYPE AM. FINISH TO BE CONFIRMED BY ARCHITECT. MH: 25' - FIXTURE TO BE C/W 22' POLE ON 3' BASE MFR: LSI #: VALS-21L-AM-347-40K7-FINISH-IS, 4000K	FIXTURE MUST BE DARK SKY COMPLIANT WITH ZERO UPLIGHT, IP66 RATED PER IEC 60598-1, SUITABLE FOR -40C TO 50C OPERATION. FIXTURE MUST HAVE FIELD REPLACEABLE LED ENGINE AND BLACK LED LENS APERTURE TO REDUCE SCATTER.	130	LED, 347V 4000K 16538lm
DN		4" LED RECESSED DOWNLIGHT, SPECULAR CLEAR FINISH, 0-10V DIMMING, 80CRI, PRISMATIC LENS, 60DEG BEAM ANGLE. FINISH TO BE CONFIRMED BY ARCHITECT. MH: AS PER DRAWINGS MFR: ATLANTIC #: COM4-SYL30-40K-347/40MPR-CL, 4000K	FIXTURE MUST BE LISTED FOR WET LOCATION UNDER COVERED CEILING.	25	LED, 347V 4000K 2042lm
W		SMALL SLIM WALL PACK, SURFACE MOUNTED, DIE-CAST ALUMINUM HOUSING, DURAGRIP FINISH, 0-10V DIMMING, HIGH PERFORMANCE CHIP ON BOARD LED BEHIND CLEAR TEMPERED GLASS. FINISH TO BE CONFIRMED BY ARCHITECT. MH: AS PER DRAWINGS MFR: LSI #: WP5LS-LED-02L-347-DIM-40-FINISH, 4000K	LED DRIVER MUST BE PROTECTED AGAINST UNDER/OVER VOLTAGE, SHOT CIRCUIT, AND OVER TEMPERATURE PER FCC STANDARDS. FIXTURE MUST BE DARK SKY COMPLIANT, WET LOCATION RATED AND SUITABLE FOR -40C TO 50C OPERATION.	20	LED, 347V 4000K 2272lm
WS2		MIRADA SMALL WALL SCONCE, DIE-CAST ALUMINUM HOUSING, 0-10V DIMMING, IP65 TO IEC 60598-1, ONE PIECE REFRACTOR SILICON OPTIC, TYPE II DISTRIBUTION. FINISH TO BE CONFIRMED BY ARCHITECT. MH: AS PER DRAWINGS MFR: LSI #: XWS-LED-06L-SIL-2-347-DIM-40-70CRI-XX, 4000K	LED DRIVER MUST BE PROTECTED AGAINST UNDER/OVER VOLTAGE, SHOT CIRCUIT, AND OVER TEMPERATURE PER FCC STANDARDS. FIXTURE MUST BE DARK SKY COMPLIANT, IP65 RATED PER IEC 60598-1, IK08 RATED PER IEC 66262, AND SUITABLE FOR -40C TO 40C OPERATION.	43	LED, 347V 4000K 5950lm
WS4F		SMALL OUTDOOR LED AREA LIGHT C/W WALL MOUNT BRACKET, REFRACTOR OPTICS, TYPE IV FORWARD. FINISH TO BE CONFIRMED BY ARCHITECT. MH: AS PER DRAWINGS MFR: LSI #: VALS-27L-4F-347-40K7-FINISH, 4000K	FIXTURE MUST BE DARK SKY COMPLIANT WITH ZERO UPLIGHT, IP66 RATED PER IEC 60598-1, SUITABLE FOR -40C TO 50C OPERATION. FIXTURE MUST HAVE FIELD REPLACEABLE LED ENGINE AND BLACK LED LENS APERTURE TO REDUCE SCATTER.	178	LED, 347V 4000K 23265lm

EXTERIOR LIGHTING SCHEDULE

ESP-1 SCALE: N.T.S.



PROJECT NO: 25-007-012

DRAWN BY: SA

CHECKED BY: CS

SHEET NAME

ELECTRICAL SITE PLAN -
LIGHTING

SEAL

SHEET NUMBER



ESP-1



V-Locity Small (VALS)

Outdoor LED Area Light



IP66



OVERVIEW

Lumen Package	6,000 - 27,000
Wattage Range	36 - 178
Efficacy Range (LPW)	142 - 171
Weight lbs(kg)	20 (9.1)
Control Options	IMSBT, ALB, ALS, 7-Pin, PCI

QUICK LINKS

FEATURES & SPECIFICATIONS

Construction

- Rugged die-cast aluminum housing contains factory prewired driver and optical units. Cast aluminum wiring access door located underneath.
- Self-contained optic, board and heat sink assembly can be rotated or replaced in the field.
- Fixtures are finished with LSI's DuraGrip® polyester powder coat finishing process. The DuraGrip finish withstands extreme weather changes without cracking or peeling. Other standard LSI finishes available. Consult factory.
- Shipping weight: TBD lbs in carton.

Optical System

- State-of-the-Art acrylic optics delivers industry leading optical control with an integrated gasket to provide IP66 rated seal.
- Proprietary refractor optics provide exceptional coverage and uniformity in distribution types 2, 3M, 3W, 4M, 4W, 4F, FTM, 5QN, 5QM, 5Q, 5QW, AM, WF and LC/RC.
- Available in 5000K, 4000K, 3500K, 3000K and 2700K color temperatures per ANSI C78.377 as well as phosphor converted amber.
- Minimum CRI of 80 (optional 70 CRI for 5000K and 4000K).
- Factory or field installable integral shielding available for enhanced spill light control.
- Zero Uplight (excludes adjustable arms).

Electrical

- High-performance driver features over-voltage, under voltage, short-circuit and over temperature protection.
- 0-10 volt dimming (10% - 100%) standard, must specify EXT option for dimming leads to be extended to fixture exterior.
- Standard Universal Voltage (120-277 VAC) Input 50/60 Hz or optional High Voltage (347-480 VAC).
- L70 Calculated Life: >60k Hours
- Total harmonic distortion: <20%
- Operating temperature: -40°C to +50°C (-40°F to +122°F).
- Power factor: >.90
- Input power stays constant over life.
- Field replaceable 10kV surge protection device meets a minimum Category C Low operation (per ANSI/IEEE C62.41.2).
- High-efficacy LEDs mounted to metal-core circuit board to maximize heat dissipation
- Driver is fully encased in potting material for moisture resistance and complies with FCC standards. Driver and key electronic components can easily be accessed.

Controls

- Optional integral passive infrared Bluetooth™ motion and photocell sensor. Fixtures operate independently and can be commissioned via iOS or Android configuration app.
- LSI's AirLink™ wireless control system options reduce energy and maintenance costs while optimizing light quality 24/7.

Installation

- REDiMount pole mount arm allows for a true one person installation.
- Side arm pole mount designed to mount to square or round poles.
- Pole mount arms can accommodate pole drill patterns from 2.4 to 5" on center and utilize LSI's reduced B3 or traditional B5 drill patterns.
- Additional mounting options are available including a mast arm or adjustable slip fitter that allow for luminaire attachment to a 2 3/8" tenon or mast arm.
- Adjustable arms allow for 65° of tilt (-5° below horizontal to +60° above horizontal) in 5° increments.

Warranty

- LSI luminaires carry a 5-year limited warranty. Refer to <https://www.lsicorp.com/resources/terms-conditions-warranty/> for more information.

Listings

- Listed to UL 1598 and UL 8750.
- Meets Buy American Act requirements.
- DarkSky approved with 3000K or warmer color temperature selection (side arm pole and mast arm mounting only).
- Title 24 Compliant; see local ordinance for qualification information.
- Suitable for wet locations.
- IP66 rated Luminaire per IEC 60598-1.
- 3G rated for ANSI C136.31 high vibration applications are qualified.





V-Locity Small (VALS) Outdoor LED Area Light

Type : _____

 Have questions? Call us at (800) 436-7800

ORDERING GUIDE

TYPICAL ORDER EXAMPLE: VALS 18L 4W UNV 40K8 BLK SA ALBMR2LR IS						
Prefix	Lumen Package	Distribution	Orientation ²	Voltage	Color Temp /Rendering	Finish
VALS - V-Locity Area Light Small	6L - 6,000 lms, 36W 9L - 9,000 lms, 54W 12L - 12,000 lms, 74W 15L - 15,000 lms, 91W 18L - 18,000 lms, 111W 21L - 21,000 lms, 130W 24L - 24,000 lms, 155W 27L - 27,000 lms, 178W Custom Lumen Packages ¹	2 - Type 2 3M - Type 3 Medium 3W - Type 3 Wide 4M - Type 4 Medium 4F - Type 4 Forward 4W - Type 4 Wide FTM - Forward Throw Medium 5QN - Type 5 Square Narrow 5QM - Type 5 Square Medium 5Q - Type 5 Square 5QW - Type 5 Square Wide AM- Automotive Merchandise WF - 6x6 Wide Flood LC - Left Corner RC - Right Corner	(Blank) - Standard L - Optics rotated left 90° R - Optics rotated right 90°	UNV - Universal Voltage (120-277V) HV - High Voltage (347-480V)	50K7 - 5000 CCT - 70 CRI 50K8 - 5000 CCT - 80 CRI 40K7 - 4000 CCT - 70 CRI 40K8 - 4000 CCT - 80 CRI 35K8 - 3500 CCT - 80 CRI 30K8 - 3000 CCT - 80 CRI 27K8 - 2700 CCT - 80 CRI AMB - Phosphor Converted Amber	BLK - Black BRZ - Dark Bronze GMG - Gun Metal Gray GPT - Graphite MSV - Metallic Silver PLP - Platinum Plus SVG - Satin Verde Green WHT - White
Mounting	Controls (Choose One)					Options
SA - Universal Side Arm Pole Mount SF - Adjustable Slip Fitter UA - Universal Adjustable Pole Mount Arm MA - Mast Arm	<div><div><div>(Blank) - None</div><div>Wireless Controls System ALSC - AirLink Synapse Control System ALSCS2 - AirLink Synapse Control System with 12-20' MH Motion Sensor ALSCS4 - AirLink Synapse Control System with 20-40' MH Motion Sensor</div><div>ALBMR1LR - AirLink Blue Long Range Wireless Multi-Range Sensor Controller (8-15' MH)⁴ ALBMR2LR - AirLink Blue Long Range Wireless Multi-Range Sensor Controller (16-40' MH)⁴</div></div><div><div>Stand-Alone Controls EXT - 0-10v Dimming leads extended to housing exterior CR7P - 7 Pin Control Receptacle ANSI C136.41³</div><div>IMSBTL1 - Integral Bluetooth™ Motion and Photocell Sensor (8-24' MH)⁴ IMSBTL2 - Integral Bluetooth™ Motion and Photocell Sensor (25-40' MH)⁴</div><div>PCIU - 120-277 Button Photocell PCI347 - 347V Button Photocell</div></div></div>					IS - Integral Shield ² TE - Toolless Entry (Mast Arm Only)
<div><div><div></div><div>Need more information? Click here for our glossary</div></div><div><div>Have additional questions? Call us at (800) 436-7800</div><div></div></div></div>						

Accessory Ordering Information⁵

CONTROLS ACCESSORIES		FUSING OPTIONS ⁷		EXTERNAL SHIELDING OPTIONS	
Description	Order Number	Description	Order Number	Description	Order Number
Twist Lock Photocell (120V) for use with CR7P	122514	Single Fusing (120V)	See Fusing Accessory Guide	1.5" External Shield	See Shielding Guide
Twist Lock Photocell (208-277) for use with CR7P	122515	Single Fusing (277V)		3" External Shield	Guide
Twist Lock Photocell (347V) for use with CR7P	122516	Double Fusing (208V, 240V)			
Twist Lock Photocell (480V) for use with CR7P	1225180	Double Fusing (480V)			
AirLink 5 Pin Twist Lock Controller	661409	Double Fusing (347V)			
AirLink 7 Pin Twist Lock Controller	661410				
Shorting Cap for use with CR7P	149328				














1. Custom lumen and wattage packages available, consult factory. Values are within industry standard tolerances but not DLC listed.
2. Not available on Type 5 or wide flood distributions.
3. Control device or shorting cap must be ordered separately. See Accessory Ordering Information.
4. Motion sensors are field configurable via the LSI app that can be downloaded from your smartphone's native app store.
5. Accessories are shipped separately and field installed.
6. "CLR" denotes finish. See Finish options.
7. Fusing must be located in hand hole of pole. See [Fusing Accessory Guide](#) for compatibility.

V-Locity Small (VALS) Outdoor LED Area Light

Type : _____

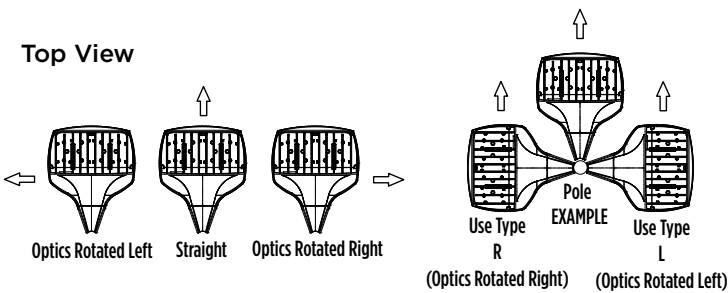
Have questions? Call us at (800) 436-7800

ACCESSORIES

MOUNTING ACCESSORIES		SHIELDING, POLES & MISC. ACCESSORIES	
Side Arm	Bullhorn Bracket Mounts onto a 2" (51mm) IP, 2.375" (60mm) O.D. tenon and allows for mounting up to 4 adjustable slip fitter mount luminaires Part Number: BKS PTB 2 CLR / BKS PTB 12 CLR (2 Luminaires) Part Number: BKS PTB 3-30 CLR / BKS PTB 13-30 CLR (3 Luminaires) Part Number: BKS PTB 4 CLR / BKS PTB 14 CLR (4 Luminaires)		
	Flood Wall Mount Bracket Mounts onto vertical wall surface (hardware/anchors not included) Part Number: BKS FMW 5 CLR (5" Straight Version) Part Number: BKS FMW 18 CLR (18" Curved Version)		
	Bolt on Side Tenon Mount Bolt on Side Tenon Mount Part Number: BKSFB0 5 CLR (5" Straight Version) Part Number: BKSFB0 18 CLR (18" Curved Version) Part Number: BKSFB0 30 CLR (30" Dual Tenon Version)		
Tenon / Slipfitter	Square Tenon Top Allows to seamlessly integrate LSI luminaires to open top 4", 5" or 6" square poles with 11 ga. Or 7 ga. wall thickness Part Number: BKA ISF10 _SQ CLR		
	Square Tenon Top Mounts onto a 2" (51mm) IP, 2.375" (60mm) O.D. tenon and allows for mounting up to 4 luminaires Part Number: BKA XNM *		
	Square Internal Slipfitter Mounts inside 4" or 5" square pole and allows for mounting up to 4 luminaires Part Number: BKA X _JSF * CLR		
Wall Mount/ Wood Pole	Wall Mount Bracket Mounts onto vertical wall surface (hardware/anchors not included) Part Number: BKS XBO WM CLR		
	Wood Pole Bracket Mounts onto wooden poles (6" minimum OD, hardware/anchors not included) Part Number: BKS XBO WP CLR		
		Shielding	Integral Shield for Asymmetric Distributions Field Install Integral shield provides maximum backlight control by shielding each individual row of LEDs with minimal impact on Streett/front side distribution Part Number: TBD 
		Integral Shield for Left and Right Corner Distributions Field install integral shield provides cutoff from two sides for maximum spill light control when utilizing LC or RC corner distributions Part Number: TBD 	
		External Shield External shield blocks view of light source from anyside of luminaire, additional shielding configurations available Part Number: TBD (1.5") / TBD (3") 	
		Poles	Square Poles 14 - 39" steel and aluminum poles in 4", 5" and 6" sizes for retrofit and new construction Part Number: 4SQ/5SQ/6SQ 
		Round Poles 10 - 30" steel and aluminum poles in 4" and 5" sizes for retrofit and new construction Part Number: 4RP/5RP 	
		Tapered Poles 20' - 39" steel and aluminum poles for retrofit and new construction Part Number: RTP 	
		Misc.	Bird Spikes 10' linear bird spike (3' recommended per luminaire) silicone adhesive (covers approximately 25' linear fee of bird spike) and application tool Spike Part Number: 751631 Adhesive Part Number: 751632 Caulk Gun Part Number: 751636 

- 1 Replace CLR with paint finish description
- 2 Replace XX with SQ for square pole or RD for round pole (≥3" OD)
- 3 Replace * with S (Single), D180 (Double @180°), D90 (Double @90°), T90 (Triple), Q90 (Quad)
- 4 Replace _ with 4 (4" square pole) or 5 (5" square pole)

OPTICS ROTATION

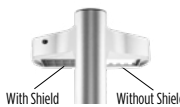


ACCESSORIES/OPTIONS

Integral Shield (IS)


Integral Shield (IS) available for improved backlight control without sacrificing Streett side performance. LSI's Integral Shield (IS) option delivers backlight control that significantly reduces spill light behind the pole for applications with pole locations close to adjacent properties. The design maximizes forward reflected light while reducing glare, maintaining the optical distribution selected, and most importantly eliminating light trespass. Shields rotate with the optical distribution.

Integral Shield (IS)



With Shield Without Shield

Luminaire Shown with AirLink Blue Sensor Option




ALBMRI

7 Pin Photoelectric Control

7-pin ANSI C136.41-2013 control receptacle option available for twist lock photocontrols or wireless control modules. Control accessories sold separately. Dimming leads from the receptacle will be connected to the driver dimming leads (Consult factory for alternate wiring).

Luminaire Shown with CR7P



V-Locity Small (VALS) Outdoor LED Area Light

Type : _____

 Have questions? Call us at (800) 436-7800

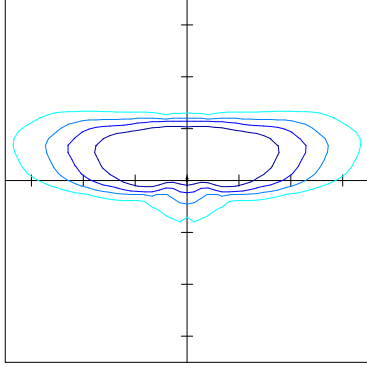
PHOTOMETRICS

Luminaire photometry has been conducted by a NVLAP accredited testing laboratory in accordance with IESNA LM-79-08. As specified by IESNA LM-79-08 the entire luminaire is tested as the source resulting in a luminaire efficiency of 100%.

See the individual product page on <https://www.lsicorp.com/> for detailed photometric data.

VALS 18L 2 40K8

V-LOCITY Area Small, 18,000lm,
Type 2 Distribution

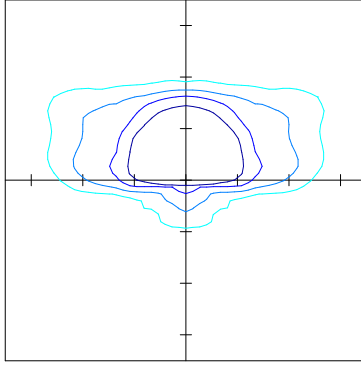


20' Mounting Height / 30' Grid Spacing
■ 2 FC ■ 1 FC ■ 0.5 FC ■ 0.2 FC

IES Type	II Medium
BUG Rating	B2-U0-G4
Street Side Lumen %	88.9%
House Side Lumen %	11.1%
Uplight %	0.0%

VALS 18L 3M 40K8

V-LOCITY Area Small, 18,000lm, Type 3
Medium Distribution

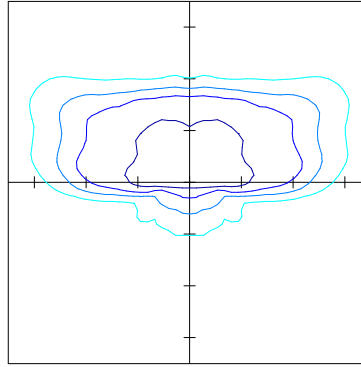


20' Mounting Height / 30' Grid Spacing
■ 2 FC ■ 1 FC ■ 0.5 FC ■ 0.2 FC

IES Type	III Very Short
BUG Rating	B2-U0-G3
Street Side Lumen %	90.1%
House Side Lumen %	9.9%
Uplight %	0.0%

VALS 18L 3W 40K8

V-LOCITY Area Small, 18,000lm, Type 3 Wide
Distribution

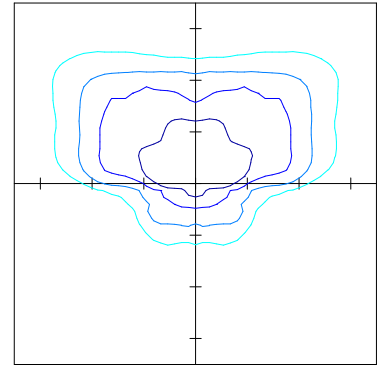


20' Mounting Height / 30' Grid Spacing
■ 2 FC ■ 1 FC ■ 0.5 FC ■ 0.2 FC

IES Type	IV Medium
BUG Rating	B2-U0-G4
Street Side Lumen %	86.1%
House Side Lumen %	13.9%
Uplight %	0.0%

VALS 18L 4W 40K8

V-LOCITY Area Small, 18,000lm, Type 4
Wide Distribution

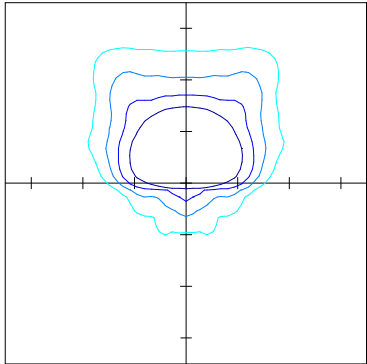


20' Mounting Height / 30' Grid Spacing
■ 2 FC ■ 1 FC ■ 0.5 FC ■ 0.2 FC

IES Type	IV Medium
BUG Rating	B2-U0-G5
Street Side Lumen %	86.3%
House Side Lumen %	13.7%
Uplight %	0.0%

VALS 18L 4M 40K8

V-LOCITY Area Small, 18,000lm, Type 4
Medium Distribution

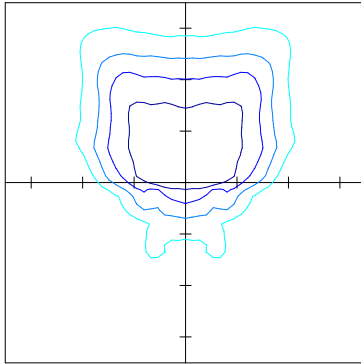


20' Mounting Height / 30' Grid Spacing
■ 2 FC ■ 1 FC ■ 0.5 FC ■ 0.2 FC

IES Type	IV Very Short
BUG Rating	B1-U0-G3
Street Side Lumen %	91.0%
House Side Lumen %	9.0%
Uplight %	0.0%

VALS 18L 4F 40K8

V-LOCITY Area Small, 18,000lm, Type 4
Forward Distribution

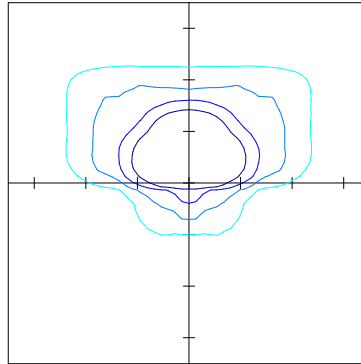


20' Mounting Height / 30' Grid Spacing
■ 2 FC ■ 1 FC ■ 0.5 FC ■ 0.2 FC

IES Type	IV Short
BUG Rating	B2-U0-G4
Street Side Lumen %	87.9%
House Side Lumen %	12.1%
Uplight %	0.0%

VALS 18L FTM 40K8

V-LOCITY Area Small, 18,000lm, Forward
Throw Medium Distribution

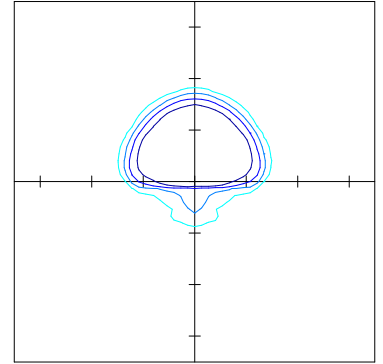


20' Mounting Height / 30' Grid Spacing
■ 2 FC ■ 1 FC ■ 0.5 FC ■ 0.2 FC

IES Type	III Very Short
BUG Rating	B1-U0-G2
Street Side Lumen %	90.2%
House Side Lumen %	9.8%
Uplight %	0.0%

VALS 18L AM 40K8

V-LOCITY Area Small, 18,000lm, Automotive
Merchandise Distribution




20' Mounting Height / 30' Grid Spacing
■ 2 FC ■ 1 FC ■ 0.5 FC ■ 0.2 FC

IES Type	III Very Short
BUG Rating	B1-U0-G2
Street Side Lumen %	94.1%
House Side Lumen %	5.9%
Uplight %	0.0%

V-Locity Small (VALS) Outdoor LED Area Light

Type : _____

 Have questions? Call us at (800) 436-7800

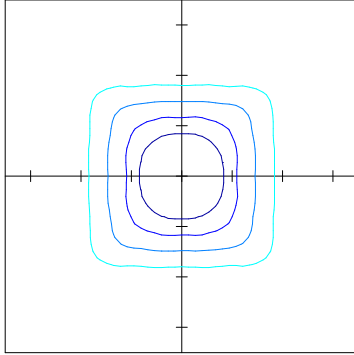
PHOTOMETRICS (CONTINUED)

Luminaire photometry has been conducted by a NVLAP accredited testing laboratory in accordance with IESNA LM-79-08. As specified by IESNA LM-79-08 the entire luminaire is tested as the source resulting in a luminaire efficiency of 100%.

See the individual product page on <https://www.lsicorp.com/> for detailed photometric data.

VALS 18L 5QN 40K8

V-LOCITY Area Small, 18,000lm, Type 5
Square Narrow Distribution

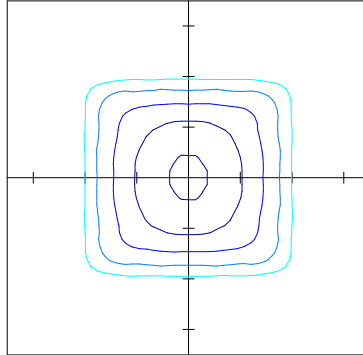


20' Mounting Height / 30' Grid Spacing
■ 2 FC ■ 1 FC ■ 0.5 FC ■ 0.2 FC

IES Type	VS Very Short
BUG Rating	B3-U0-G2
0 - 60° Zonal Lumens	73.8%
60 - 90° Zonal Lumens	26.2%
Uplight %	0.0%

VALS 18L 5QM 40K8

V-LOCITY Area Small, 18,000lm, Type 5
Square Medium Distribution

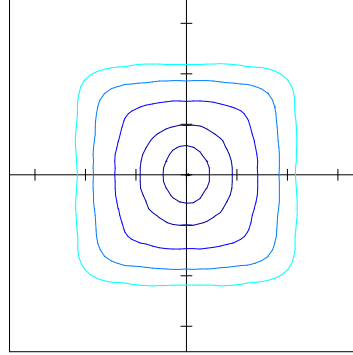


20' Mounting Height / 30' Grid Spacing
■ 2 FC ■ 1 FC ■ 0.5 FC ■ 0.2 FC

IES Type	VS Short
BUG Rating	B4-U0-G2
0 - 60° Zonal Lumens	51.0%
60 - 90° Zonal Lumens	49.0%
Uplight %	0.0%

VALS 18L 5Q 40K8

V-LOCITY Area Small, 18,000lm, Type 5
Square Distribution

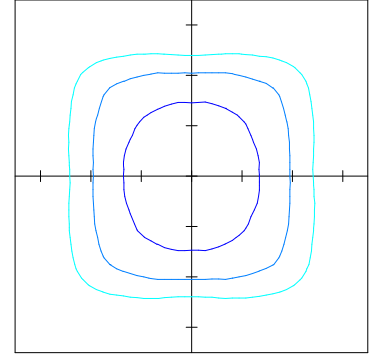


20' Mounting Height / 30' Grid Spacing
■ 2 FC ■ 1 FC ■ 0.5 FC ■ 0.2 FC

IES Type	VS Medium
BUG Rating	B5-U0-G3
0 - 60° Zonal Lumens	41.8%
60 - 90° Zonal Lumens	58.2%
Uplight %	0.0%

VALS 18L 5QW 40K8

V-LOCITY Area Small, 18,000lm, Type 5
Square Wide Distribution

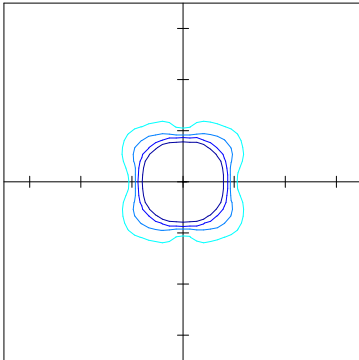


20' Mounting Height / 30' Grid Spacing
■ 2 FC ■ 1 FC ■ 0.5 FC ■ 0.2 FC

IES Type	VS Medium
BUG Rating	B5-U0-G3
0 - 60° Zonal Lumens	33.7%
60 - 90° Zonal Lumens	66.3%
Uplight %	0.0%

VALS 18L WF 40K8

V-LOCITY Area Small, 18,000lm, Wide Flood
Distribution

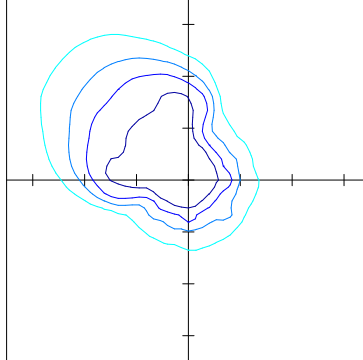


20' Mounting Height / 30' Grid Spacing
■ 2 FC ■ 1 FC ■ 0.5 FC ■ 0.2 FC

NEMA Type	6x6
Max Candela	9,352
Max Candela Angle	-19.5H x -29V
Beam Angle	80.7 x 90.0°
Field Angle	109.9 x 117.7°

VALS 18L LC 40K8

V-LOCITY Area Small, 18,000lm, Left Corner
Distribution

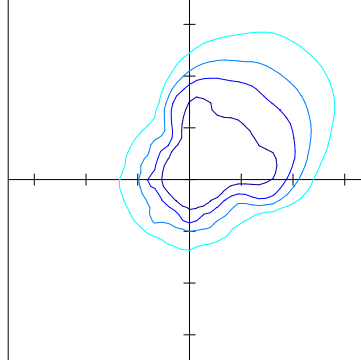


20' Mounting Height / 30' Grid Spacing
■ 2 FC ■ 1 FC ■ 0.5 FC ■ 0.2 FC

IES Type	N/A
BUG Rating	B3-U0-G4
Street Side Lumen %	74.3%
House Side Lumen %	25.7%
Uplight %	0.0%

VALS 18L RC 40K8

V-LOCITY Area Small, 18,000lm, Right Corner
Distribution



20' Mounting Height / 30' Grid Spacing
■ 2 FC ■ 1 FC ■ 0.5 FC ■ 0.2 FC

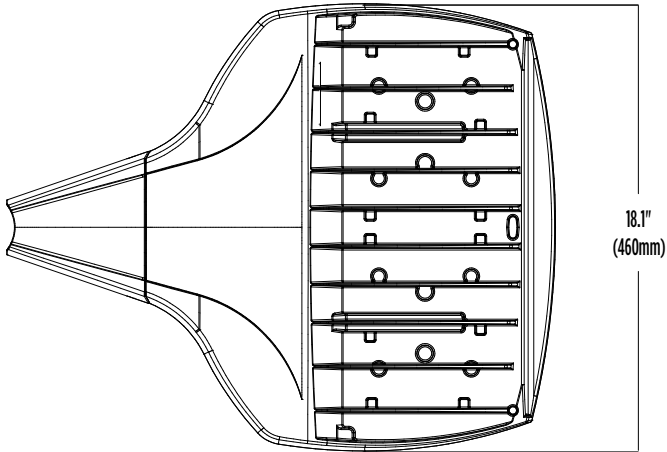
IES Type	N/A
BUG Rating	B3-U0-G4
Street Side Lumen %	74.3%
House Side Lumen %	25.7%
Uplight %	0.0%







V-Locity Small (VALS) Outdoor LED Area Light







Type : _____


 Have questions? Call us at (800) 436-7800


PRODUCT DIMENSIONS



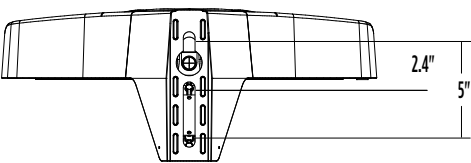
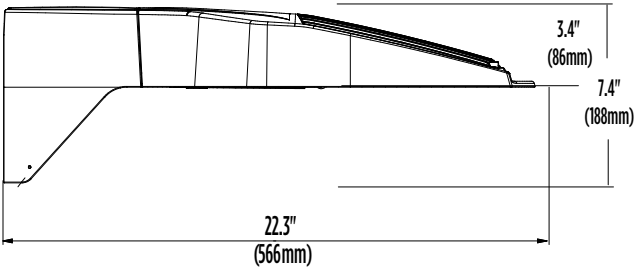
Luminaire EPA Chart - SA Side Arm		
Tilt Degree		0°
	Single	0.7
	D180°	1.3
	D90°	1.0
	T90°	1.4
	TN120°	1.5
	Q90°	1.4

Luminaire EPA Chart - UA Universal Adjustable Arm						
Tilt Degree		0°	15°	30°	45°	60°
	Single	0.8	0.8	1.3	1.8	2.1
	D180°	1.5	1.9	2.5	3.2	3.8
	D90°	1.5	1.9	2.5	3.2	3.8
	T90°	1.8	2.1	2.7	3.2	3.8
	TN120°	1.8	2.3	3.4	4.3	5.0
	Q90°	1.8	2.1	2.7	3.2	3.8

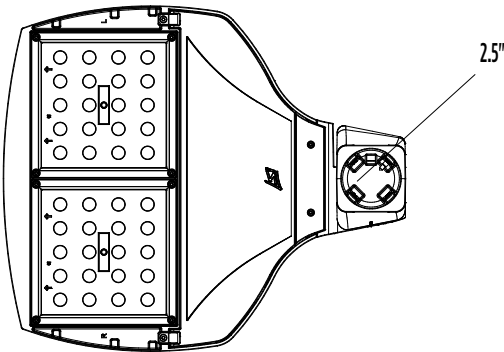
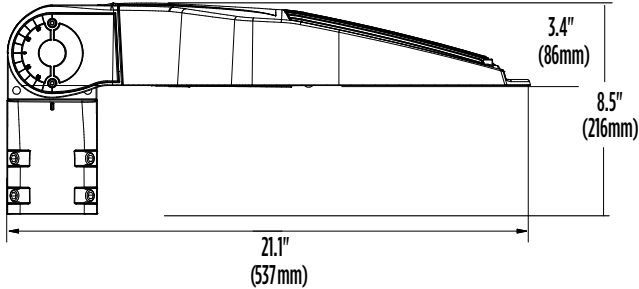
Luminaire EPA Chart - MA Mast Arm		
Tilt Degree		0°
	Single	0.5

Luminaire EPA Chart - SF Adjustable Slip Fitter						
Tilt Degree		0°	15°	30°	45°	60°
	Single	0.7	1.3	1.4	1.8	2.2

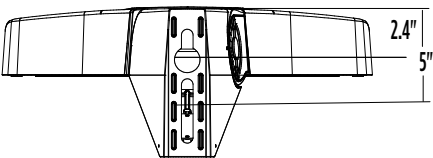
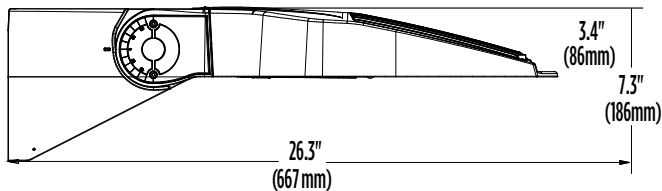
SA Universal Side Arm Mount



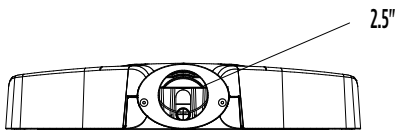
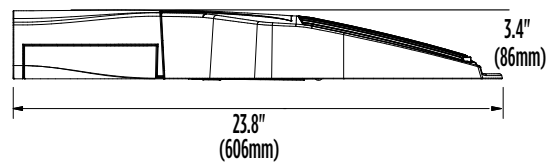
SF Adjustable Slipfitter



UA Universal Adjustable Arm



MA Mast Arm



V-Locity Small (VALS) Outdoor LED Area Light

Type : _____

 Have questions? Call us at (800) 436-7800

CONTROLS

Integral Bluetooth™ Motion and Photocell Sensor (IMSBTxL)

Slim low profile sensor provides multi-level control based on motion and/or daylight. Sensor controls 0-10 VDC LED drivers and is IP66 rated for cold and wet locations (-40°F to 167°F). Two unique PIR lenses are available and used based on fixture mounting height. All control parameters are adjustable via an iOS or Android App capable of storing and transmitting sensor profiles.

[Click here to learn more details about IMSBT](#)



LEVITON App



Apple



Android

AirLink Blue (ALBMRxLR, ALBCSx)

Wireless Bluetooth Mesh Outdoor Lighting Control System that provides energy savings, code compliance and enhanced safety/security for parking lots and parking garages. Three key components; Bluetooth wireless radio/sensor controller, Time Keeper and an iOS App. Capable of grouping multiple fixtures and sensors as well as scheduling time-based events by zone. Radio/Sensor Controller is factory integrated into Area/ Site, Wall Mounted, Parking Garage and Canopy luminaires.

[Click here to learn more details about AirLink Blue](#)



AirLink Blue App



Apple

Sensor Sequence of Operations

Standard Programming	On Event	Off Event	On Light Level	Dim Light Level	Daylight Harvesting	Delay To Off	Sensitivity
OMSBTxL/IMSBTxL	Motion	No Motion	100%	N/A	On; Auto Calibration	20 minutes	High
OMS	Motion	No Motion	N/A	N/A	N/A	30 seconds	Auto

Operation	Description
On Event	Trigger that activates lights to turn on; either automatic via motion detected or manually activated via push of button.
Off Event	Trigger that activates lights to turn off; either automatic via no motion detected or manually activated via push of button.
On Light Level	The light level that the fixtures will turn on to when ON EVENT occurs.
Dim Light Level	The light level that the fixtures will dim down to when no motion is detected.
Delay to Dim	The amount of time after which no motion is detected that the fixtures will be triggered to dim down. This sequence is optional, and sensor can be programmed to only trigger the fixture to turn off by entering 100% in this field.
Delay to Off	The amount of time after which no motion is detected that the fixtures will be triggered to turn off. If delay to dim is part of the programmed functionality, this is the amount of time after which no motion is detected after the fixture have already dimmed down.
Sensitivity	The sensitivity can be set to high, medium, low, or auto where applicable. High will detect smaller, simple motions. Low will only detect larger more complex motions. Auto temperature calibration adjusts the PIR sensitivity as ambient temperature rises to increase detection of heat movement through the field of view.



Catalog # : _____ Project : _____
Prepared By : _____ Date : _____

Slim Wall Pack (WPSLS)

Small LED Slim Wall Pack



OVERVIEW

Lumen Range	1,000 - 4,000
Wattage Range	12 - 40
Efficacy Range (LPW)	98 - 122
Weight lbs(kg)	3.8 (1.7)

QUICK LINKS

[Ordering Guide](#)[Performance](#)[Dimensions](#)[Photometrics](#)

FEATURES & SPECIFICATIONS

Construction

- Rigid Precision Die cast-aluminum housing for durability and consistency.
- Vertical fins serve as a heat sink and resist accumulation of dust and debris.
- The Patent Pending thermal stacking heat removal technology extracts heat from within the housing moving it away from LEDs and integral components.
- Luminaire hinges open from the bottom to prevent leakage.
- Luminaire is proudly manufactured and tested in the U.S.
- Fixtures are finished with LSI's DuraGrip® polyester powder coat finishing process. The DuraGrip finish withstands extreme weather changes without cracking or peeling. Other standard LSI finishes available. Consult factory
- Shipping weight: 3.8 lbs in carton.

Optical System

- High-performance Chip On Board (COB) LEDs behind clear tempered glass for maximum light output.
- 3000K | 4000K | 5000K color temperatures.
- Minimum CRI of 71.
- Zero uplight.

Electrical

- High-performance driver features over-voltage, under voltage, short-circuit and over temperature protection.
- 0-10 volt dimming (10% - 100%) standard.
- Standard Universal Voltage (120-277 Vac) Input 50/60 Hz
- L70 Calculated Life: >100k Hours
- Total harmonic distortion: <20%
- Power factor: >.85
- Input power stays constant over life.
- Driver Off-State Power is 0 watts.
- Chip On Board (COB) LEDs with integrated circuit board mounted directly to the housing to maximize heat dissipation and promote long life.
- Components are fully encased in potting material for moisture resistance. Driver complies with FCC standards. Driver and key electronic components can easily be accessed.
- Minimum 2.5kV surge rating
- Operating temperature: -40°C to +50°C (-40°F to +122°F)

Controls

- Optional 120V electronic button Photocontrol.
- Apertures for field or factory installed photo-control.

Installation

- Surface mounts direct to J-box or wall.
- Features a bubble level and removable hinged face frame for ease of installation.

Warranty

- LSI LED Fixtures carry a 5-year warranty.
- 1 Year warranty on optional Button Photocell.

Listings

- Listed to UL 1598 and UL 8750.
- CSA Listed
- RoHS Compliant.
- DesignLights Consortium® (DLC) qualified product. Not all versions of this product may be DLC qualified. Please check the DLC Qualified Products List at www.designlights.org/QPL to confirm which versions are qualified.
- American Recovery and Reinvestment Act Funding Compliant.
- Suitable For Wet Locations.

Specifications and dimensions subject to change without notice.





Small LED Slim Wall Pack (WPSLS)

ORDERING GUIDE

[Back to Quick Links](#)

TYPICAL ORDER EXAMPLE: **WPSLS LED 1L UNV DIM 30 PC120 BZA**

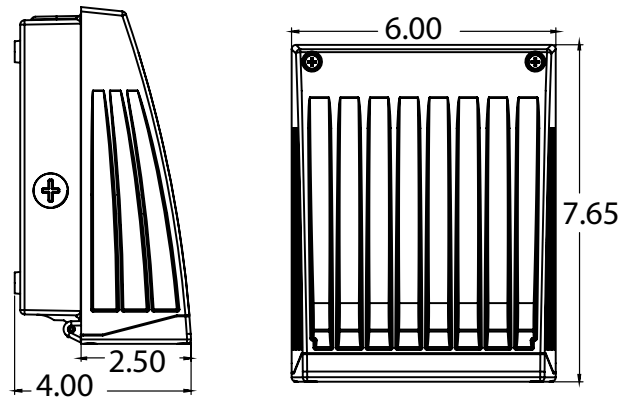
Family Prefix	Lumen Package	Color Temp	Controls	Finishes
WPSLS - Small Slim Wall Pack	1L - 1000 Lumens 2L - 2000 Lumens 4L - 4000 Lumens	30 - 3000K 40 - 4000K 50 - 5000K	PC120 - 120V Photocontrol PC208-277 - 208-277V Photocontrol	BZA - Bronze WHT - White BLK - Black

PERFORMANCE

Lumens	3000K		4000K		5000K		Wattage
	Delivered Lumens	Efficacy	Delivered Lumens	Efficacy	Delivered Lumens	Efficacy	
1L	1206	97.79	1206	97.79	1366	111.11	12
2L	2125	107.2	2125	107.2	2418	121.97	20
4L	3712	100.18	3712	100.18	4394	116.21	40

LED		HID			Annual Savings
Wattage	Annual Cost	Source Wattage	Total Wattage Used	Annual Cost	
12	\$5	50	72	\$52	\$47
		70	90	\$59	\$54
20	\$9	50	72	\$52	\$43
		70	90	\$59	\$50
		100	129	\$77	\$68
40	\$18	100	129	\$77	\$59
		150	185	\$100	\$82
		175	210	\$112	\$94

PRODUCT DIMENSIONS

[Back to Quick Links](#)


PHOTOMETRICS

[Back to Quick Links](#)

Luminaire photometry has been conducted by a NVLAP accredited testing laboratory in accordance with IESNA LM-79-08. As specified by IESNA LM-79-08 the entire luminaire is tested as the source resulting in a luminaire efficiency of 100%. See <http://www.lsi-industries.com/products/led-lighting-solutions.aspx> for detailed photometric data.

WPSLS-4L-40

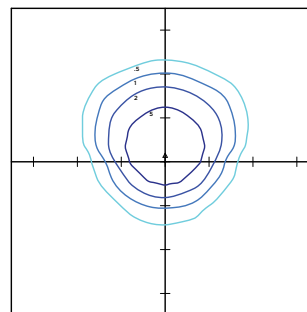
Luminaire Data

Wide Distribution	
Description	4000 Kelvin, 70 CRI
Delivered Lumens	4,053
Watts	37.0
Efficacy	109
IES Type	Type III - Very Short
BUG Rating	B1-U0-G1

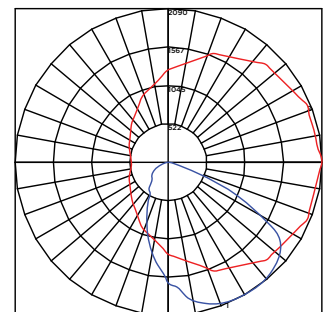
Zonal Lumen Summary

Zone	Lumens	%Luminaire
Low (0-30°)	1239.6	30.6%
Medium (30-60°)	2246.2	55.4%
High (60-80°)	559.6	13.8%
Very High (80-90°)	7.3	0.2%
Uplight (90-180°)	0.0	0.0%
Total Flux	4052.7	100%

ISO FOOTCANDLE PLOT



POLAR CURVE



10' Mounting Height/10' Grid Spacing

10 FC 5 FC 2 FC 1 FC





Mirada Small Wall Sconce Silicone (XWS SIL)

Outdoor LED Wall Light



OVERVIEW

Lumen Package (lm)	2,000 - 8,000
Wattage Range (W)	13 - 61
Efficacy Range (LPW)	126 - 162
Weight lbs (kg)	10 (4.5)

QUICK LINKS

FEATURES & SPECIFICATIONS

Construction

- Rugged die-cast aluminum housing.
- Fixtures are finished with LSI's DuraGrip® polyester powder coat finishing process. The DuraGrip finish withstands extreme weather changes without cracking or peeling. Other standard LSI finishes available. Consult factory.
- Extended housing available with 1/2" threaded hubs for surface conduit and rated wire.
- Standard luminaire shipping weight: TBD lbs in carton.
- Max luminaire shipping weight: 12 lbs in carton (20 lbs w/EH option)

Optical System

- State-of-the-Art one piece silicone optic provides industry leading optical control while also acting as an integrated gasket reducing system complexity and improving fixture reliability.
- Proprietary silicone refractor optics provide exceptional coverage and uniformity in distribution types 2, 3, and FT.
- Silicone optical material does not yellow or crack with age and provides a typical light transmittance of 93%.
- Zero uplight.
- Available in 5000K, 4000K, and 3000K color temperatures per ANSI C78.377.
- Minimum CRI of 70

Electrical

- High-performance driver features over-voltage under-voltage, short-circuit, and over temperature protection.

- 0-10V dimming (10% - 100%) standard.
- Standard Universal Voltage (120-277 VAC) Input 50/60 Hz or optional High Voltage (347-480 VAC).
- L70 Calculated Life: >60k Hours
- Total harmonic distortion (THD): <20%
- Operating temperature: -40°C to +50°C (-40°F to +122°F).
- Power factor (PF): >.90
- Input power stays constant over life.
- Optional 10kV surge protection device meets a minimum Category C Low operation (per ANSI/IEEE C62.41.2).
- High-efficacy LEDs mounted to metal-core circuit board to maximize heat dissipation
- Driver is fully encased in potting material for moisture resistance. Driver complies with FCC standards. Accessible driver and electrical components.
- Optional battery backup provides 90-minutes of constant power to the LED system, ensuring code compliance. A test switch/indicator button is installed on the housing for ease of maintenance. Standard battery rated for 0°C to 50°C with cold weather battery rated for -20°C to 50°C (40°C max for 8L). 120-277V Only.

Controls

- Optional integral passive infrared Bluetooth™ motion. Fixtures operate independently and can be commissioned via iOS or Android configuration app.
- Optional button photocell turns fixtures on and off based on ambient light levels for dusk to dawn lighting.

- LSI's AirLink Blue wireless control system options allow for fixture and motion sensor grouping while reducing energy and maintenance costs.

Installation

- Universal wall mounting plate mounts directly to vertical surface or 4" junction box (octagonal or square).
- Luminaire hinges to the top of the mounting plate and is secured via two flush mount screws that help to conceal the hardware and prevent over tightening during installation.

Warranty

- LSI luminaires carry a 5-year limited warranty. Refer to <https://www.lsicorp.com/resources/terms-conditions-warranty/> for more information.

Listings

- Listed to UL 1598 and UL 8750.
- Meets Buy American Act requirements.
- IDA compliant; with 3000K color temperature selection.
- Title 24 Compliant; see local ordinance for qualification information.
- Suitable for wet locations.
- IP65 rated luminaire per IEC 60598-1.
- IK08 rated luminaire per IEC 60662 mechanical impact code.
- DesignLights Consortium® (DLC) Premium qualified product. Not all versions of this product may be DLC Premium qualified. Please check the DLC Qualified Products List at www.designlights.org/QPL to confirm which versions are qualified.

Mirada Small Wall Sconce Silicone (XWS SIL)

Type : _____

 **Have questions?** Call us at (800) 436-7800

ORDERING GUIDE

TYPICAL ORDER EXAMPLE: XWS LED 6L SIL FT UNV DIM 40 70CRI ALBCS1 BLK CWBB						
Prefix	Light Source	Lumen Package	Lens	Distribution	Voltage	Driver
XWS - Mirada Small Wall Sconce	LED	2L - 2,000 3L - 3,000 5L - 5,000 6L - 6,000 8L - 8,000 Custom Lumen Packages ¹	SIL - Silicone	2 - Type 2 3 - Type 3 FT - Forward Throw	UNV - Universal Voltage (120-277V) HV - High Voltage (347-480V)	DIM - 0-10v Dimming (0-10%)
Color Temperature	Color Rendering	Controls			Finish	Options
50 - 5000K 40 - 4000K 30 - 3000K	70CRI - 70 CRI	Blank - None <u>Wireless Controls</u> ALBCS1 - AirLink Blue Wireless Motion & Photo Sensor Controller (8-24' mounting height) ² <u>Standalone Controls</u> EXT - 0-10v Dimming leads extended to housing exterior IMSBT1L - Integral Bluetooth™ Motion Sensor 8-24' MH ^{2,3} <u>Button Type Photocells</u> PCI120 - 120V PCI208-277 - 208 -277V PCI347 - 347V			BLK - Black BRZ - Dark Bronze GMG - Gun Metal Gray GPT - Graphite MSV - Metallic Silver PLP - Platinum Plus SVG - Satin Verde Green WHT - White	Blank - None BB - 10w Battery Back-up (0°C) ⁴ CWBB - 10w Cold Weather Battery Backup (-20°C) ⁴ BB20 - 20W Battery Back-up (0°C) ⁴ EH - Extended Housing ⁵ SP1 - 10kV Surge Protection Device



Need more information?
[Click here for our glossary.](#)

Have additional questions?
Call us at (800) 436-7800



ACCESSORY ORDERING INFORMATION*

Part Number	Description
758274CLR	XWS Extended Housing/Surface Conduit Wiring Box
760159CLR	XWS Spacer Plate/Wiring Box

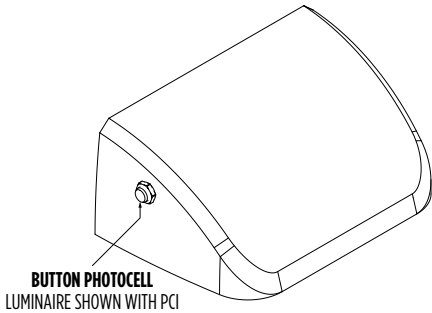
*Accessories are shipped separately and field installed.

Battery Backup

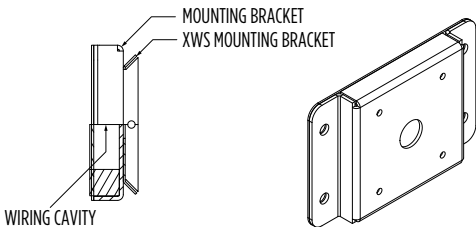
- Emergency battery system provides 90-minutes of constant power to the LED system, ensuring code compliance.
- A test switch/indicator button is installed on the housing for ease of maintenance.
- 10w battery delivers ~1,500 lumens during emergency mode.
- 20w battery delivers ~3,000 lumens during emergency mode.



Luminaire shown with sensor & battery backup



BUTTON PHOTOCELL
LUMINAIRE SHOWN WITH PCI



WIRING CAVITY

MOUNTING BRACKET
XWS MOUNTING BRACKET

1 Custom lumen and wattage packages available, consult factory. Values are within industry standard tolerances but not DLC listed.
2 When high voltage (HV) is specified, IMSBT and ALBCS control options are limited to 6L and 8L lumen packages.
3 IMSBTxL is field configurable via the LSI app that can be downloaded from your smartphone's native app store.
4 Universal Voltage Only (120-277V). 20W Battery Backup only available 2L - 6L.
5 For applications with surface conduit.

Mirada Small Wall Sconce Silicone (XWS SIL)

Type : _____

 Have questions? Call us at (800) 436-7800

PERFORMANCE

Delivered Lumens ¹												
Lumen Package	Distribution	CRI	3000K CCT			4000K CCT			5000K CCT			Wattage
			Delivered Lumens	Efficacy	Bug Rating	Delivered Lumens	Efficacy	Bug Rating	Delivered Lumens	Efficacy	Bug Rating	
2L	2	70	1,851	142	B1-U0-G1	1,974	152	B1-U0-G1	1,976	152	B1-U0-G1	13
	3		1,930	148	B1-U0-G1	2,058	158	B1-U0-G1	2,060	158	B1-U0-G1	
	FT		1,889	145	B1-U0-G1	2,015	155	B1-U0-G1	2,017	155	B1-U0-G1	
3L	2	70	2,765	146	B1-U0-G1	2,950	155	B1-U0-G1	2,953	155	B1-U0-G1	19
	3		2,884	152	B1-U0-G1	3,077	162	B1-U0-G1	3,079	162	B1-U0-G1	
	FT		2,822	149	B1-U0-G1	3,010	158	B1-U0-G1	3,012	159	B1-U0-G1	
5L	2	70	4,655	133	B2-U0-G1	4,965	142	B2-U0-G1	4,970	142	B2-U0-G1	35
	3		4,855	139	B1-U0-G1	5,179	148	B1-U0-G1	5,184	148	B1-U0-G1	
	FT		4,750	136	B1-U0-G2	5,067	145	B1-U0-G2	5,072	145	B1-U0-G2	
6L	2	70	5,578	130	B2-U0-G1	5,950	138	B2-U0-G2	5,956	139	B2-U0-G2	43
	3		5,819	135	B1-U0-G2	6,207	144	B1-U0-G2	6,214	145	B1-U0-G2	
	FT		5,693	132	B1-U0-G2	6,073	141	B1-U0-G2	6,079	141	B1-U0-G2	
8L	2	70	7,531	123	B2-U0-G2	8,034	132	B2-U0-G2	8,041	132	B2-U0-G2	61
	3		7,856	129	B2-U0-G2	8,380	137	B2-U0-G2	8,388	138	B2-U0-G2	
	FT		7,687	126	B2-U0-G2	8,199	134	B2-U0-G2	8,207	135	B2-U0-G2	

Electrical Data - Current Draw AMPS ²						
Lumen Package	120V	208V	240V	277V	347V	480V
2L	0.11	0.06	0.05	0.05	0.04	0.03
3L	0.16	0.09	0.08	0.07	0.05	0.04
5L	0.29	0.17	0.15	0.13	0.10	0.07
6L	0.36	0.21	0.18	0.16	0.12	0.09
8L	0.51	0.29	0.25	0.22	0.18	0.13

Recommended Lumen Maintenance - XWS ³					
Ambient Temperature C°	Initial ⁴	25K hrs. ⁴	50K hrs. ⁴	75K hrs. ⁵	100K hrs. ⁵
25	100%	95%	90%	85%	80%
40	100%	91%	82%	73%	65%

1 LEDs are frequently updated therefore values are nominal
2 Electrical data at 25C (77F). Actual wattage may differ by +/-10%.
3 Lumen maintenance values at 25°C are calculated per TM-21 based on LM-80 data and in-situ luminaire testing.
4 In accordance with IESNA TM-21-11, Projected Values represent interpolated value based on time durations that are within six times (6X) the IESNA LM-80-08 total test duration (in hours) for the device under testing ((DUT) i.e. the packaged LED chip).
5 In accordance with IESNA TM-21-11, Calculated Values represent time durations that exceed six times NA LM-80-08 total test duration (in hours) for the device under testing ((DUT) i.e. the packaged LED chip).

Mirada Small Wall Sconce Silicone (XWS SIL)

Type : _____

 Have questions? Call us at (800) 436-7800

PHOTOMETRICS

Luminaire photometry has been conducted by a NVLAP accredited testing laboratory in accordance with IESNA LM-79-08. As specified by IESNA LM-79-08 the entire luminaire is tested as the source resulting in a luminaire efficiency of 100%.

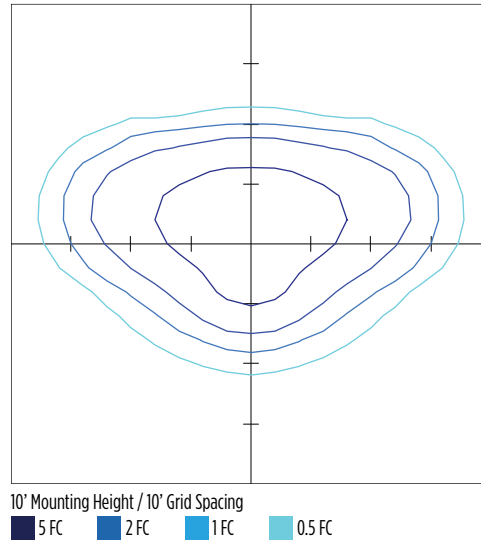
See the individual product page on <https://www.lsicorp.com/> for detailed photometric data.

XWS-LED-6L-SIL-2-40-70CRI

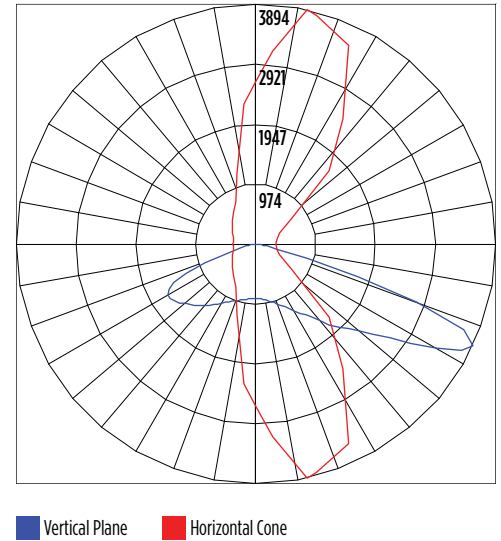
Luminaire Data	
Type 2 Distribution	
Description	4000 Kelvin, 70 CRI
Delivered Lumens	5,951
Watts	42.5
Efficacy	138
IES Type	Type II - Short
BUG Rating	B1-U0-G1

Zonal Lumen Summary		
Zone	Lumens	% Luminaire
Low (0-30°)	834	20%
Medium (30-60°)	3,379	50%
High (60-80°)	1,647	28%
Very High (80-90°)	91	1%
Uplight (90-180°)	0	0%
Total Flux	5,951	100%

ISO Footcandle



Polar Curve

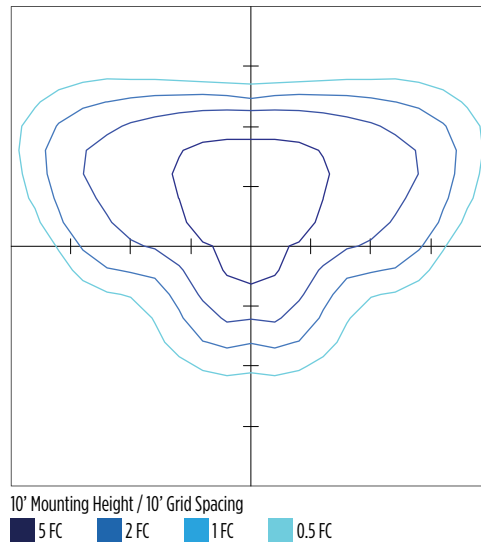


XWS-LED-6L-SIL-3-40-70CRI

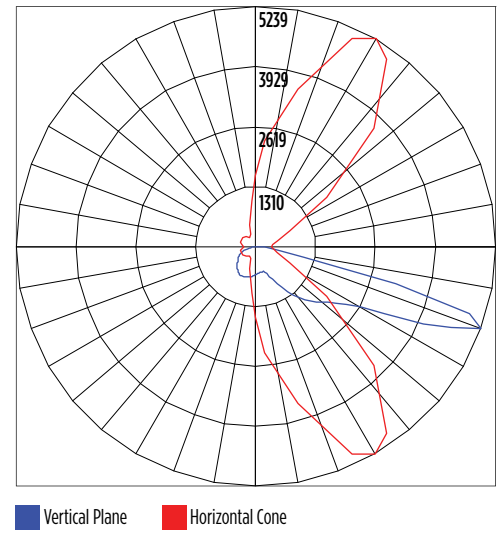
Luminaire Data	
Type 3 Distribution	
Description	4000 Kelvin, 70 CRI
Delivered Lumens	6,208
Watts	42.5
Efficacy	146
IES Type	Type III - Medium
BUG Rating	B1-U0-G2

Zonal Lumen Summary		
Zone	Lumens	% Luminaire
Low (0-30°)	582	9%
Medium (30-60°)	2,997	48%
High (60-80°)	2,506	40%
Very High (80-90°)	124	2%
Uplight (90-180°)	0	0%
Total Flux	6,208	100%

ISO Footcandle



Polar Curve



Mirada Small Wall Sconce Silicone (XWS SIL)

Type : _____

 Have questions? Call us at (800) 436-7800

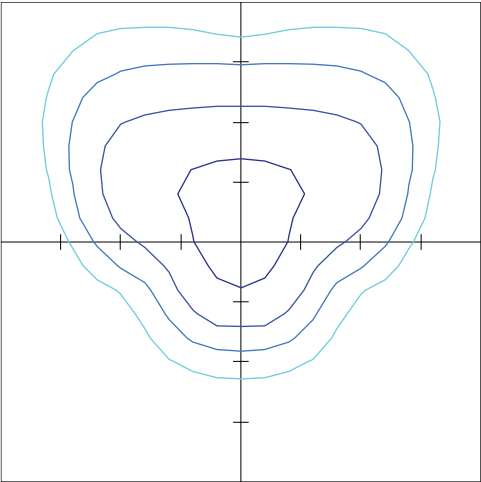
PHOTOMETRICS

XWS-LED-6L-SIL-FT-40-70CRI

Luminaire Data	
Type FT Distribution	
Description	4000 Kelvin, 70 CRI
Delivered Lumens	6,073
Watts	42.5
Efficacy	143
IES Type	Type IV - Short
BUG Rating	B1-U0-G2

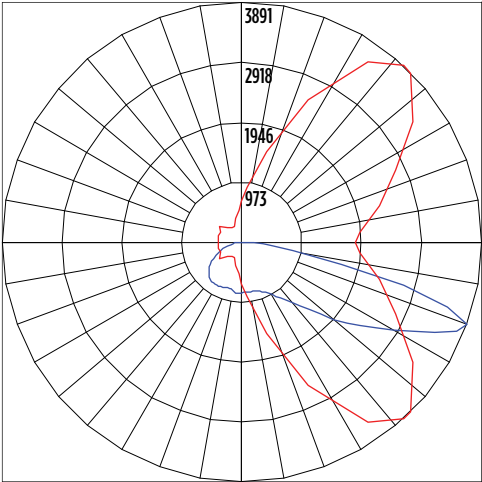
Zonal Lumen Summary		
Zone	Lumens	% Luminaire
Low (0-30°)	708.3	12%
Medium (30-60°)	2,715.5	45%
High (60-80°)	2,475.4	41%
Very High (80-90°)	173.6	3%
Uplight (90-180°)	0	0%
Total Flux	6,073	100%

ISO Footcandle



10' Mounting Height / 10' Grid Spacing
5 FC 2 FC 1 FC 0.5 FC

Polar Curve



Vertical Plane Horizontal Cone

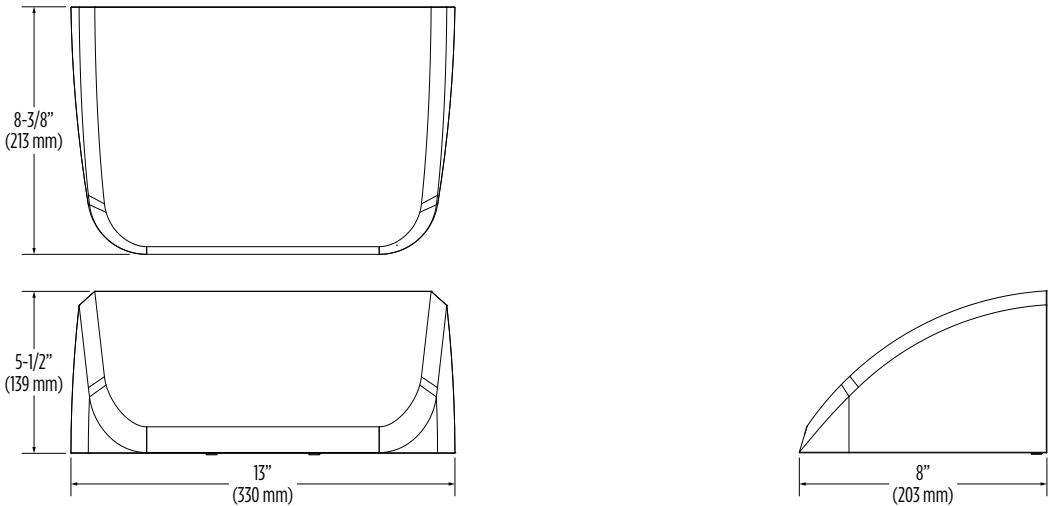
Mirada Small Wall Sconce Silicone (XWS SIL)

Type : _____

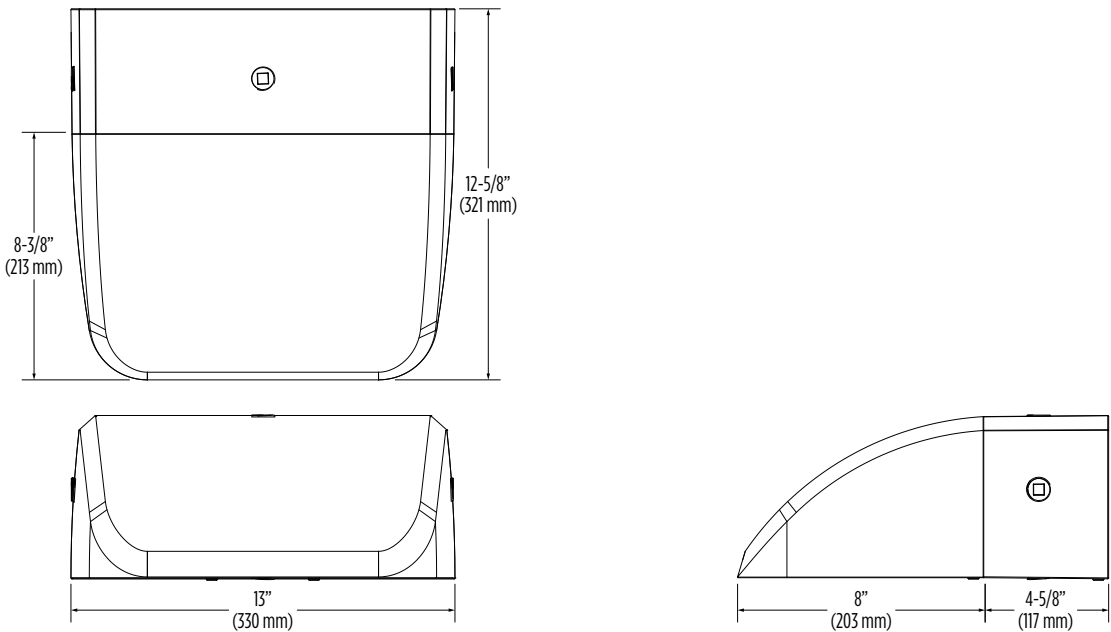
 Have questions? Call us at (800) 436-7800

PRODUCT DIMENSIONS

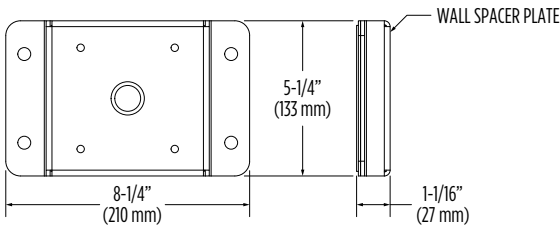
STANDARD HOUSING (XWS)



SCWB EXTENDED HOUSING (XWS 758274CLR)



XWS SPACER PLATE/WIRING BOX (XWS 760159CLR)



NOTE: Wall spacer plate allows the luminaire to float off the wall and provides space for securing wires (8.25" X 5.25" X 1.07").

CONTROLS

Integral Bluetooth™ Motion and Photocell Sensor (IMSBTxL)

Slim low profile sensor provides multi-level control based on motion and/or daylight. Sensor controls 0-10 VDC LED drivers and is IP66 rated for cold and wet locations (-40°F to 167°F). Two unique PIR lenses are available and used based on fixture mounting height. All control parameters are adjustable via an iOS or Android App capable of storing and transmitting sensor profiles.

[Click here to learn more details about IMSBT](#)



LEVITON App



Apple



Android

AirLink Blue (ALBCSx)

Wireless Bluetooth Mesh Outdoor Lighting Control System that provides energy savings, code compliance and enhanced safety/security for parking lots and parking garages. Three key components; Bluetooth wireless radio/sensor controller, Time Keeper and an iOS App. Capable of grouping multiple fixtures and sensors as well as scheduling time-based events by zone. Radio/Sensor Controller is factory integrated into Area/ Site, Wall Mounted, Parking Garage and Canopy luminaires.

[Click here to learn more details about AirLink Blue](#)



AirLink Blue App



Apple

Sensor Sequence of Operations

Standard Programming	On Event	Off Event	On Light Level	Dim Light Level	Daylight Harvesting	Delay To Off	Sensitivity
IMSBTxL	Motion	No Motion	100%	N/A	On; Auto Calibration	20 minutes	High

Operation	Description
On Event	Trigger that activates lights to turn on; either automatic via motion detected or manually activated via push of button.
Off Event	Trigger that activates lights to turn off; either automatic via no motion detected or manually activated via push of button.
On Light Level	The light level that the fixtures will turn on to when ON EVENT occurs.
Dim Light Level	The light level that the fixtures will dim down to when no motion is detected.
Delay to Dim	The amount of time after which no motion is detected that the fixtures will be triggered to dim down. This sequence is optional, and sensor can be programmed to only trigger the fixture to turn off by entering 100% in this field.
Delay to Off	The amount of time after which no motion is detected that the fixtures will be triggered to turn off. If delay to dim is part of the programmed functionality, this is the amount of time after which no motion is detected after the fixture have already dimmed down.
Sensitivity	The sensitivity can be set to high, medium, low, or auto where applicable. High will detect smaller, simple motions. Low will only detect larger more complex motions. Auto temperature calibration adjusts the PIR sensitivity as ambient temperature rises to increase detection of heat movement through the field of view.

RECESSED

LED 4" lens

1100, 1500, 2000 or 3000 lumens

commercial

Project:

Type:

Catalog number:

frame-in kit

- This fixture is universal 120-277V when using the standard 0-10V dimming driver. Voltage must be specified when using optional drivers. A (3) designated fixture will have a 347V driver with 0-10V DC dimming (1%-100%).
- Prewired and grounded junction box with galvanized snap-on covers. Listed for through branch circuit wiring.
- Universal mounting brackets provide tool-less adjustability and will accept the supplied hanger bars or optional #517 and #520 Caddy bars. Also accepts C channel.
- Electrogalvanized plated steel hanger bars are included as factory standard. Bars extend to 24" and offer self-nailing and additional mounting features.
- 5-year LED component warranty details at atlantic-lighting.com/main/support.

PrevaLED® by eldoLED Cube LED Module

- 80+ CRI
- 90 CRI option offered.
Lower lumen output and reduced lumens per watt will be experienced with this option.
- Rated Life: 50,000 hours at 70% lumen maintenance (L70) when maintained in a 45°C ambient environment with open air flow. Ambient temperatures lower than 45°C may extend life of module.

OPTOTRONIC® by eldoLED Driver

- Dimmable, instant 100% light, (1%-100%) via: 0-10V protocol. Contact factory for optional dim-to-off and soft-start programming. See driver spec.

Passive Heat Sink

- Black anodized aluminum

This LED fixture is intended for non-IC applications, insulation must be kept 3" away from fixture on all sides. Not for use within enclosures.

Listed for Wet Location under covered ceiling. Listed to UL 1598 and Canadian standards. Air Tight certified to ASTM E283-04 with -AT trim option. Photometrics at atlantic-lighting.com.

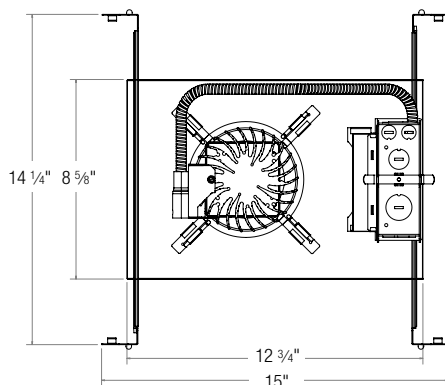
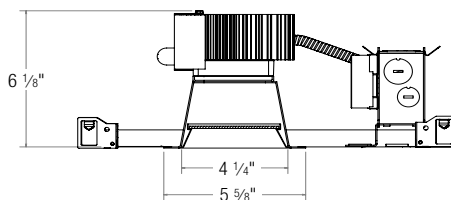
Specifications and dimensions subject to change without notice.



ATLANTIC
LIGHTING

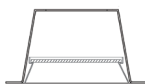
T: 508 678-5411 | F: 508 678-5408 www.atlantic-lighting.com

R.O. Ø 4 3/4"
Maximum ceiling
thickness 1"



TRIM KIT

lensed reflector



- 4CMPR Prismatic lens
60° beam angle
- 4CMFR Frosted lens
70° beam angle

Precision spun .052 aluminum self-flanged reflector offered in specular clear, semi-specular clear, haze clear and in white. Flange is white as factory standard, optional polished flange will match reflector finish. Contact factory for optional reflector colors.



*Listed lumens and wattages are component measurements. See photometrics for fixture values.

ordering data

FRAME-IN KIT

SERIES

COM4 Commercial 4" LED

COM4

LUMENS*

SYL11 1100 lumen module
SYL15 1500 lumen module
SYL20 2000 lumen module
SYL30 3000 lumen module

COLOR TEMPERATURE

27K 2700K
3K 3000K
35K 3500K
4K 4000K
5K 5000K

VOLTAGE

U Universal 120V-277V
1 120V
2 277V
3 347V

DIMMING

0-10V DC standard, leave box blank

LDE Lutron® EcoSystem®
(100%-1%, Fade-to-Black™)
LTE Lutron® 2-wire forward-phase
(100%-1%) (120V only)
DAL DALI (Type 6, IEC62386)
Driver; Dimming to 0.1%
DMX DMX Driver with RDM
capability; Dimming to 0.1%
2-wire. TRIAC forward-phase
or ELV reverse-phase (100%-1%)
(120V only)

Must specify voltage with optional dimming.

ADVANCED DIMMING

V010 Lutron Vive enabled for use
with standard 0-10V driver.
VECO Lutron Vive enabled for use
with optional LDE driver.

Contact factory for zone and other control options.

OPTIONS

9CR 90 CRI, effects lumens per
watt. Not offered in 5K.
EM6 6W emergency battery pack

TRIM KIT

Refer to left for part numbers.
Specify finish & other below.

Finishes

CL Specular clear
SS Semi-specular clear
HZ Haze clear (etched)
WH Matte white

Other

PF Polished flange
GS Gasket under flange
DBGS Double-gasket (under flange
and with a silicone sealed lens)
AT Air tight (not offered with EM6)

P/N Example: COM4-SYL15-27K-U / 4CMPR-SS

COM4-SYL15-27K-U / 4CMPR-SS

series lumens voltage advanced
temp options dimming
trim kit finish

121123 NP17-028