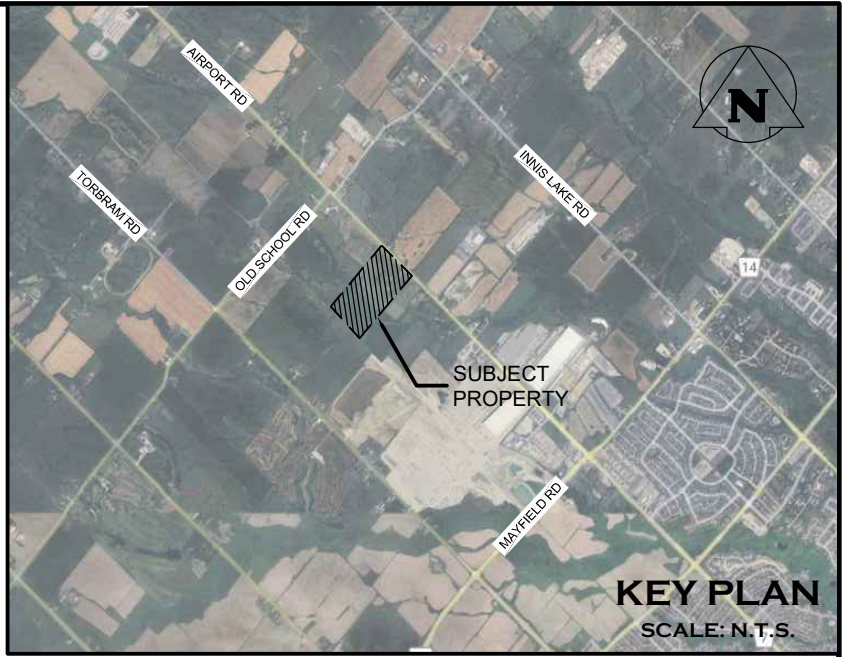
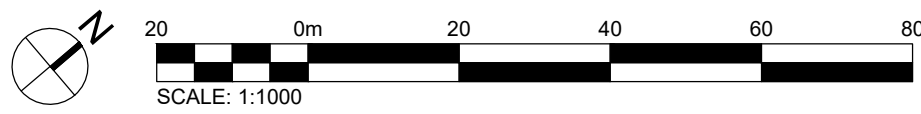
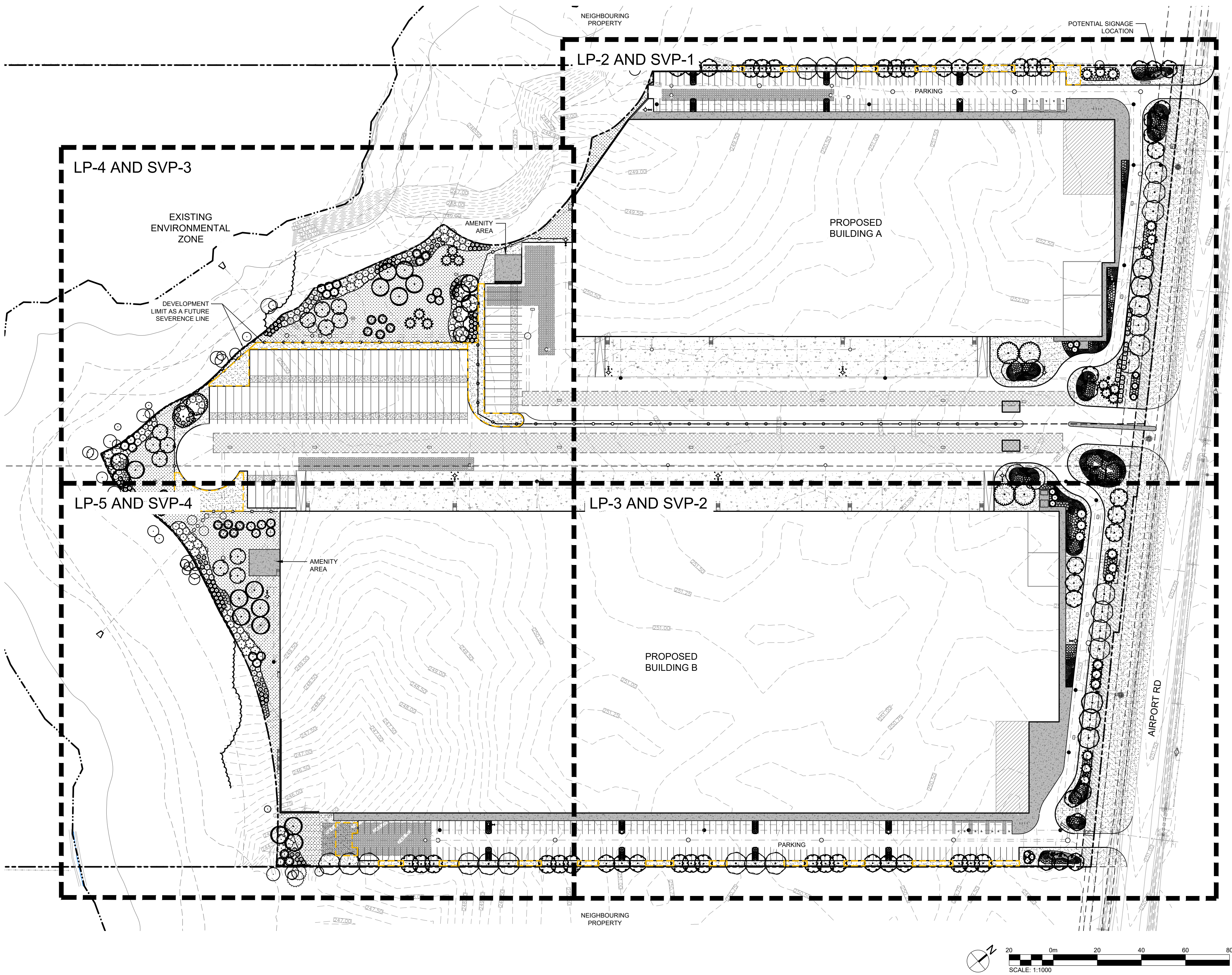


C:\Users\elad\OneDrive\Documents\Crozier Consulting Engineers\2278-Broccoli\Secondary Plan\Project Files\Landscape\7228_LP_Avg_2025-11-13_4:28:55 PM.DWG To PDF.plt



- LEGEND**
- PROPERTY BOUNDARY
 - FUTURE SEVERANCE
 - SETBACK
 - UNDERGROUND SERVICES
 - SWALE OR DITCH
 - WATERCOURSE
 - SNOW STORAGE
 - EDGE OF EXISTING VEGETATION TO BE RETAINED
 - EXISTING DECIDUOUS TREE TO BE RETAINED OR PROTECTED
 - EXISTING CONIFEROUS TREE TO BE RETAINED OR PROTECTED
 - DECIDUOUS TREE
 - CONIFEROUS TREE
 - DECIDUOUS SHRUB
 - CONIFEROUS SHRUB
 - PERENNIALS & GROUNDCOVERS
 - PLANT REFERENCE
 - TOPSOIL & SOD
 - TOPSOIL & UPLAND MIX
 - RIVER ROCK
 - CHAINLINK FENCE

TOWN OF CALEDON
PLANNING
RECEIVED
November 18th, 2025

- THIS DRAWING IS THE EXCLUSIVE PROPERTY OF C.F. CROZIER & ASSOCIATES INC. AND THE MODIFICATION AND/OR REPRODUCTION OF ANY PART OF THIS DRAWING IS STRICTLY PROHIBITED WITHOUT WRITTEN AUTHORIZATION FROM THIS OFFICE.
- THE DIGITAL FILES CONTAIN INTELLECTUAL AND DIGITAL DATA PROPERTY THAT IS THE EXCLUSIVE PROPERTY OF C.F. CROZIER & ASSOCIATES INC.
- THE CONTRACTOR SHALL VERIFY ALL DIMENSIONS, LEVELS, AND DATUMS ON SITE AND REPORT ANY DISCREPANCIES OR OMISSIONS TO C.F. CROZIER & ASSOCIATES INC. PRIOR TO CONSTRUCTION.
- THIS DRAWING IS TO BE READ AND UNDERSTOOD IN CONJUNCTION WITH ALL OTHER PLANS AND DOCUMENTS APPLICABLE TO THIS PROJECT.
- ALL EXISTING UNDERGROUND UTILITIES TO BE VERIFIED IN THE FIELD BY THE CONTRACTOR PRIOR TO CONSTRUCTION.
- DO NOT SCALE DRAWINGS.

- NOTES:**
- TOPOGRAPHIC SURVEY PROVIDED BY R-PE SURVEYING LTD. AND SITE PLAN PROVIDED BY POWERS BROWN ARCHITECTURE.
 - BASE CIVIL ENGINEERING INFORMATION PROVIDED BY C.F. CROZIER & ASSOCIATES INC.
 - ALL DIMENSIONS ARE IN METERS UNLESS OTHERWISE NOTED.
 - CONTRACTOR IS RESPONSIBLE FOR LOCATING ALL UTILITIES BEFORE CONSTRUCTION BEGINS.

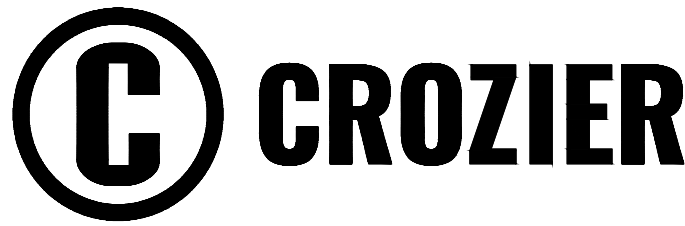


No.	ISSUE	DATE: YYYY/MM/DD
0	ISSUED FOR 1ST SUBMISSION	2025/11/13



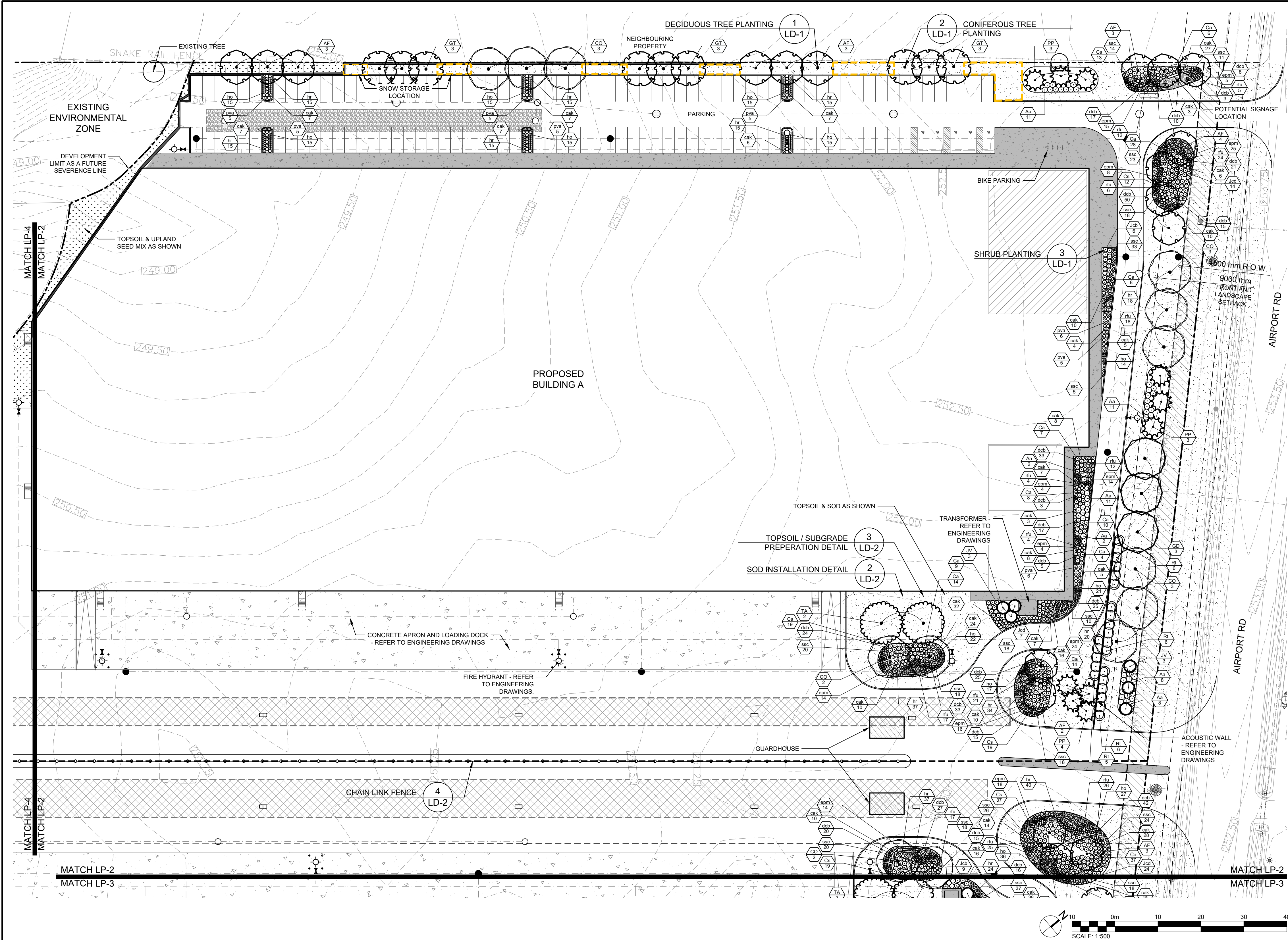
BROCCOLINI ESTATE GROUP
AIRPORT ROAD INDUSTRIAL DEVELOPMENT

LANDSCAPE PLAN - OVERALL



Drawn By	M.M./C.B.	Design By	A.P./C.B.	Project	2278-7228
Check By	A.P.	Check By	T.M.	Drawing	LP-1

C:\Users\delaterra\OneDrive\Documents\Crozier Consulting Engineers\2278-Broccoli Industrial Landscape\2278_LP-Avg-2025-11-13 1:54:50 PM.DWG To PDF.pd3



- GENERAL NOTES:**
- FOR LANDSCAPE DETAILS, SPECIFICATIONS AND STANDARD NOTES, REFER TO DRAWING LD-1 TO LD-3.
 - FOR MASTER PLANT SCHEDULE, REFER TO DRAWING LD-3.
 - FOR SEED SCHEDULE, REFER TO DRAWING LP-5.
 - MINIMUM CLEARANCES FOR TREES ARE AS FOLLOWS:
 - 2M FROM WATER HYDRANTS
 - 2M FROM DRIVEWAYS
 - 2M FROM NEIGHBOURHOOD MAILBOXES
 - 3M FROM HYDRO TRANSFORMERS
 - 5M FROM STREET LIGHTS
 - 15M MINIMUM FROM STREET LINE AND BEHIND THE DAYLIGHT TRIANGLE AS PER THE GEODETIC DESIGN STANDARDS FOR ONTARIO HIGHWAYS
 - 18M FROM FACE OF ALL WARNING AND REGULATORY SIGNS
 - THE TREE PITS AND PLANTING BEDS FOR ALL TREES AND SHRUBS LOCATED WITHIN 1 METRE OF UNDERGROUND UTILITIES ARE TO BE HAND DUG.

PLANT SCHEDULE LP-2					
CODE	QTY	BOTANICAL NAME	COMMON NAME	SIZE	CONTAINER
CONIFEROUS TREES					
JV	6	Juniperus virginiana	Eastern Redcedar	200cm ht.	W.B.
PP	10	Picea pungens	Colorado Spruce	200cm ht.	W.B.
	16	SUBTOTAL:			
DECIDUOUS TREES					
AF	16	Acer x freemania 'Jeffersred'	Autumn Blaze® Freeman Maple	70mm cal.	W.B.
CO	13	Celtis occidentalis	Common Hackberry	70mm cal.	W.B.
GT	9	Gleditsia triacanthos var. inermis 'Shademaster'	Shademaster Honey Locust	70mm cal.	W.B.
GD	3	Gymnocladus dioica	Kentucky Coffeetree	70mm cal.	W.B.
TA	2	Tilia americana	Basswood	70mm cal.	W.B.
	45	SUBTOTAL:			
CONIFEROUS SHRUBS					
Jcb	6	Juniperus chinensis 'Blaauw'	Blaauw's Juniper	40cm	3 gal. pot
Jcd	44	Juniperus communis depressa 'Aurea'	Canadian Golden Juniper	40cm	3 gal. pot
	50	SUBTOTAL:			
DECIDUOUS SHRUBS					
Aa	53	Aronia arbutifolia 'Brilliantissima'	Brilliant Red Chokeberry	50 cm wt.	3 gal. pot
Ca	158	Clethra alnifolia 'Hummingbird'	Hummingbird Summersweet	30cm	3 gal. pot
Cs	117	Cornus sericea 'Farrow'	Arctic Fire® Red Twig Dogwood	50cm ht.	3 gal. pot
Rt	12	Rhus typhina	Staghorn Sumac	50cm	3 gal. pot
	340	SUBTOTAL:			
GRASSES					
cak	317	Calamagrostis x acutiflora 'Karl Foerster'	Karl Foerster Feather Reed Grass	---	---
dcb	453	Deschampsia cespitosa 'Bronzeschleier'	Bronze Veil Tufted Hair Grass	---	1 gal. pot
pva	42	Panicum virgatum 'Apache Rose'	Apache Rose Switch Grass	---	1 gal. pot
ssc	276	Schizachyrium scoparium	Little Bluestem	---	1 gal. pot
	1,088	SUBTOTAL:			
PERENNIALS					
epm	174	Echinacea purpurea 'Merlot'	Merlot Coneflower	---	1 gal. pot
hr	276	Hemerocallis x 'Ruby Stella'	Ruby Stella Daylily	---	1 gal. pot
ho	227	Hemerocallis x 'Stella de Oro'	Stella de Oro Daylily	---	1 gal. pot
rfl	191	Rudbeckia fulgida Goldsturm	Coneflower	---	1 gal. pot
	868	SUBTOTAL:			

1. THIS DRAWING IS THE EXCLUSIVE PROPERTY OF C.F. CROZIER & ASSOCIATES INC. AND THE MODIFICATION AND/OR REPRODUCTION OF ANY PART OF THIS DRAWING IS STRICTLY PROHIBITED WITHOUT WRITTEN AUTHORIZATION FROM THIS OFFICE.

2. THE DIGITAL FILES CONTAIN INTELLECTUAL AND DIGITAL DATA PROPERTY THAT IS THE EXCLUSIVE PROPERTY OF C.F. CROZIER & ASSOCIATES INC.

3. THE CONTRACTOR SHALL VERIFY ALL DIMENSIONS, LEVELS, AND DATUMS ON SITE AND REPORT ANY DISCREPANCIES OR OMISSIONS TO C.F. CROZIER & ASSOCIATES INC. PRIOR TO CONSTRUCTION.

4. THIS DRAWING IS TO BE READ AND UNDERSTOOD IN CONJUNCTION WITH ALL OTHER PLANS AND DOCUMENTS APPLICABLE TO THIS PROJECT.

5. ALL EXISTING UNDERGROUND UTILITIES TO BE VERIFIED IN THE FIELD BY THE CONTRACTOR PRIOR TO CONSTRUCTION.

6. DO NOT SCALE DRAWINGS.

NOTES:

- TOPOGRAPHIC SURVEY PROVIDED BY R-PE SURVEYING LTD. AND SITE PLAN PROVIDED BY POWERS BROWN ARCHITECTURE.
- BASE CIVIL ENGINEERING INFORMATION PROVIDED BY C.F. CROZIER & ASSOCIATES INC.
- ALL DIMENSIONS ARE IN METERS UNLESS OTHERWISE NOTED.
- CONTRACTOR IS RESPONSIBLE FOR LOCATING ALL UTILITIES BEFORE CONSTRUCTION BEGINS.

Town of Caledon

No.	ISSUE	DATE: YYYY/MM/DD
0	ISSUED FOR 1ST SUBMISSION	2025/11/13

LANDSCAPE ARCHITECT

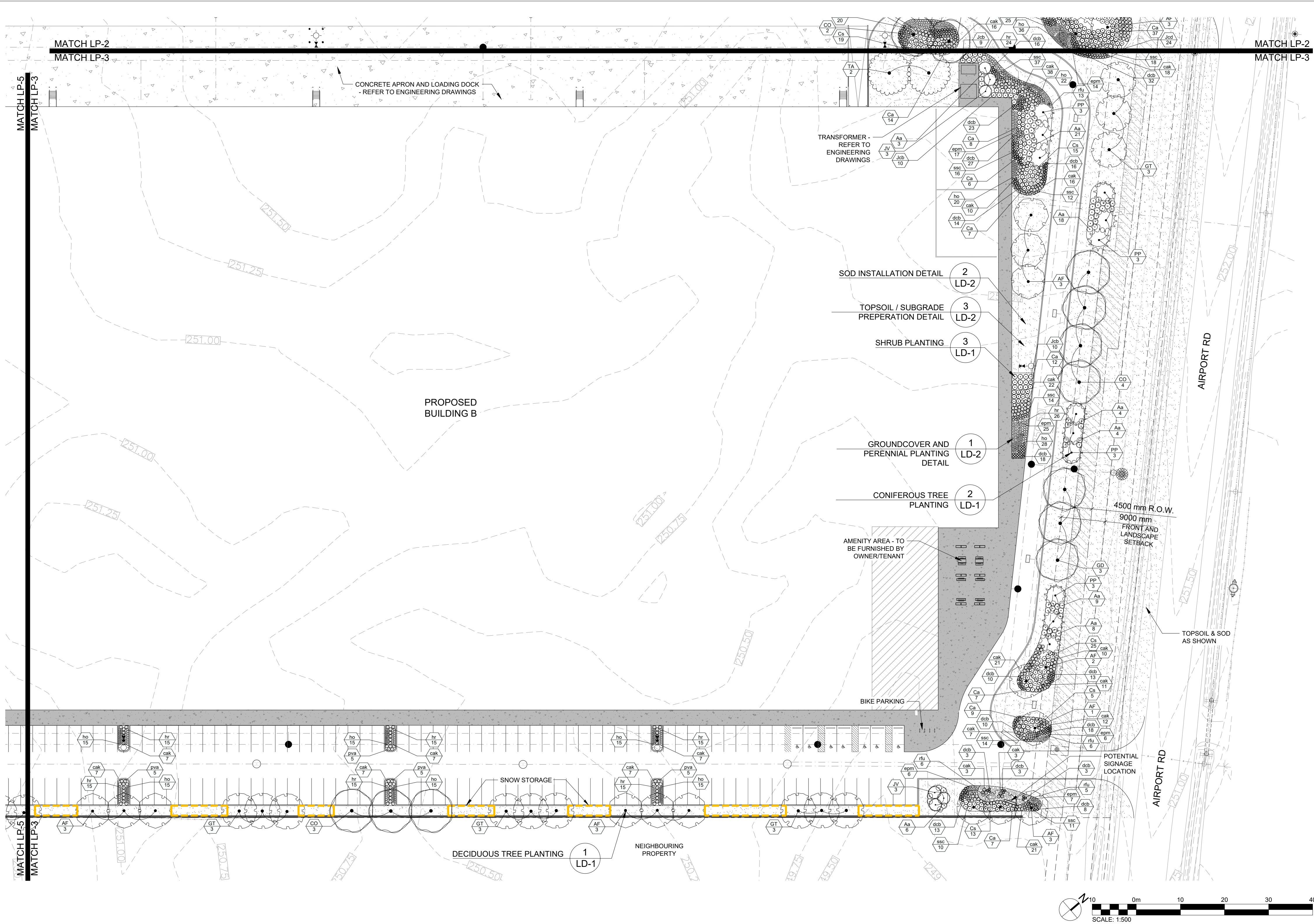
Project: BROCCOLINI ESTATE GROUP
AIRPORT ROAD INDUSTRIAL DEVELOPMENT

Drawing: LANDSCAPE PLAN

Drawn By: M.M./C.B. Design By: A.P./C.B. Project: 2278-7228

Check By: A.P. Check By: T.M. Drawing: LP-2

C:\Users\delaterra\OneDrive\Documents\Crozier Consulting Engineers\2278-Broccoli\Secondary Plan\Project Files\Landscape\7228_LP_Aug_2025-11-13_3:30:51 PM.DWG To PDF.pd3



LEGEND

- PROPERTY BOUNDARY
- FUTURE SEVERANCE
- SETBACK
- UNDERGROUND SERVICES
- SWALE OR DITCH
- WATERCOURSE
- SNOW STORAGE
- EDGE OF EXISTING VEGETATION TO BE RETAINED
- EXISTING DECIDUOUS TREE TO BE RETAINED OR PROTECTED
- EXISTING CONIFEROUS TREE TO BE RETAINED OR PROTECTED
- DECIDUOUS TREE
- CONIFEROUS TREE
- DECIDUOUS SHRUB
- CONIFEROUS SHRUB
- PERENNIALS & GROUNDCOVERS
- SPECIES
- QUANTITY
- PLANT REFERENCE
- TOPSOIL & SOD
- TOPSOIL & UPLAND MIX
- RIVER ROCK
- CHAINLINK FENCE
- TABLE
- BICYCLE RACK

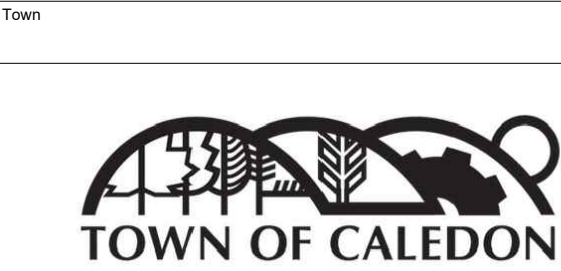


- GENERAL NOTES:**
- FOR LANDSCAPE DETAILS, SPECIFICATIONS AND STANDARD NOTES, REFER TO DRAWING LD-1 TO LD-3.
 - FOR MASTER PLANT SCHEDULE, REFER TO DRAWING LD-3.
 - FOR SEED SCHEDULE, REFER TO DRAWING LP-5.
 - MINIMUM CLEARANCES FOR TREES ARE AS FOLLOWS:
 - 2M FROM WATER HYDRANTS
 - 2M FROM DRIVEWAYS
 - 2M FROM NEIGHBOURHOOD MAILBOXES
 - 3M FROM HYDRO TRANSFORMERS
 - 5M FROM STREETLIGHTS
 - 15M MINIMUM FROM STREET LINE AND BEHIND THE DAYLIGHT TRIANGLE AS PER THE GEODETIC DESIGN STANDARDS FOR ONTARIO HIGHWAYS
 - 18M FROM FACE OF ALL WARNING AND REGULATORY SIGNS
 - THE TREE PITS AND PLANTING BEDS FOR ALL TREES AND SHRUBS LOCATED WITHIN 1 METRE OF UNDERGROUND UTILITIES ARE TO BE HAND DUG.

PLANT SCHEDULE LP-3					
CODE	QTY	BOTANICAL NAME	COMMON NAME	SIZE	CONTAINER
CONIFEROUS TREES					
JV	6	Juniperus virginiana	Eastern Redcedar	200cm ht.	W.B.
PP	12	Picea pungens	Colorado Spruce	200cm ht.	W.B.
	18	SUBTOTAL:			
DECIDUOUS TREES					
AF	15	Acer x freemanii 'Jeffersred'	Autumn Blaze® Freeman Maple	70mm cal.	W.B.
CO	7	Celtis occidentalis	Common Hackberry	70mm cal.	W.B.
GT	12	Gleditsia inaequalis var. inermis 'Shademaster'	Shademaster Honey Locust	70mm cal.	W.B.
GD	3	Gymnocladus dioicis	Kentucky Coffeetree	70mm cal.	W.B.
TA	2	Tilia americana	Basswood	70mm cal.	W.B.
	39	SUBTOTAL:			
CONIFEROUS SHRUBS					
Jcb	29	Juniperus chinensis 'Blaauw'	Blaauw's Juniper	40cm	3 gal. pot
Jcd	1	Juniperus communis depressa 'Aurea'	Canadian Golden Juniper	40cm	3 gal. pot
	30	SUBTOTAL:			
DECIDUOUS SHRUBS					
Aa	73	Aronia arbutifolia 'Brilliantissima'	Brilliant Red Chokeberry	50 cm wt.	3 gal. pot
Ca	61	Clethra alnifolia 'Hummingbird'	Hummingbird Summersweet	30cm	3 gal. pot
Cs	60	Cornus sericea 'Farrow'	Arctic Fire® Red Twig Dogwood	50cm ht.	3 gal. pot
	194	SUBTOTAL:			
GRASSES					
cak	221	Calamagrostis x acutiflora 'Karl Foerster'	Karl Foerster Feather Reed Grass	---	---
dcb	207	Deschampsia cespitosa 'Bronzeschleier'	Bronze Veil Tufted Hair Grass	---	1 gal. pot
pva	20	Panicum virgatum 'Apache Rose'	Apache Rose Switch Grass	---	1 gal. pot
ssc	132	Schizachyrium scoparium	Little Bluestem	---	1 gal. pot
	580	SUBTOTAL:			
PERENNIALS					
epm	62	Echinacea purpurea 'Merlot'	Merlot Coneflower	---	1 gal. pot
hr	140	Hemerocallis x 'Ruby Stella'	Ruby Stella Daylily	---	1 gal. pot
ho	160	Hemerocallis x 'Stella de Oro'	Stella de Oro Daylily	---	1 gal. pot
rfu	30	Rudbeckia fulgida Goldsturm	Coneflower	---	1 gal. pot
	392	SUBTOTAL:			

- THIS DRAWING IS THE EXCLUSIVE PROPERTY OF C.F. CROZIER & ASSOCIATES INC. AND THE MODIFICATION AND/OR REPRODUCTION OF ANY PART OF THIS DRAWING IS STRICTLY PROHIBITED WITHOUT WRITTEN AUTHORIZATION FROM THIS OFFICE.
- THE DIGITAL FILES CONTAIN INTELLECTUAL AND DIGITAL DATA PROPERTY THAT IS THE EXCLUSIVE PROPERTY OF C.F. CROZIER & ASSOCIATES INC.
- THE CONTRACTOR SHALL VERIFY ALL DIMENSIONS, LEVELS AND DATUMS ON SITE AND REPORT ANY DISCREPANCIES OR OMISSIONS TO C.F. CROZIER & ASSOCIATES INC. PRIOR TO CONSTRUCTION.
- THIS DRAWING IS TO BE READ AND UNDERSTOOD IN CONJUNCTION WITH ALL OTHER PLANS AND DOCUMENTS APPLICABLE TO THIS PROJECT.
- ALL EXISTING UNDERGROUND UTILITIES TO BE VERIFIED IN THE FIELD BY THE CONTRACTOR PRIOR TO CONSTRUCTION.
- DO NOT SCALE DRAWINGS.

- NOTES:**
- TOPOGRAPHIC SURVEY PROVIDED BY R-PE SURVEYING LTD. AND SITE PLAN PROVIDED BY POWERS BROWN ARCHITECTURE.
 - BASE CIVIL ENGINEERING INFORMATION PROVIDED BY C.F. CROZIER & ASSOCIATES INC.
 - ALL DIMENSIONS ARE IN METERS UNLESS OTHERWISE NOTED.
 - CONTRACTOR IS RESPONSIBLE FOR LOCATING ALL UTILITIES BEFORE CONSTRUCTION BEGINS.



No.	ISSUE	DATE: YYYY/MM/DD
0	ISSUED FOR 1ST SUBMISSION	2025/11/13



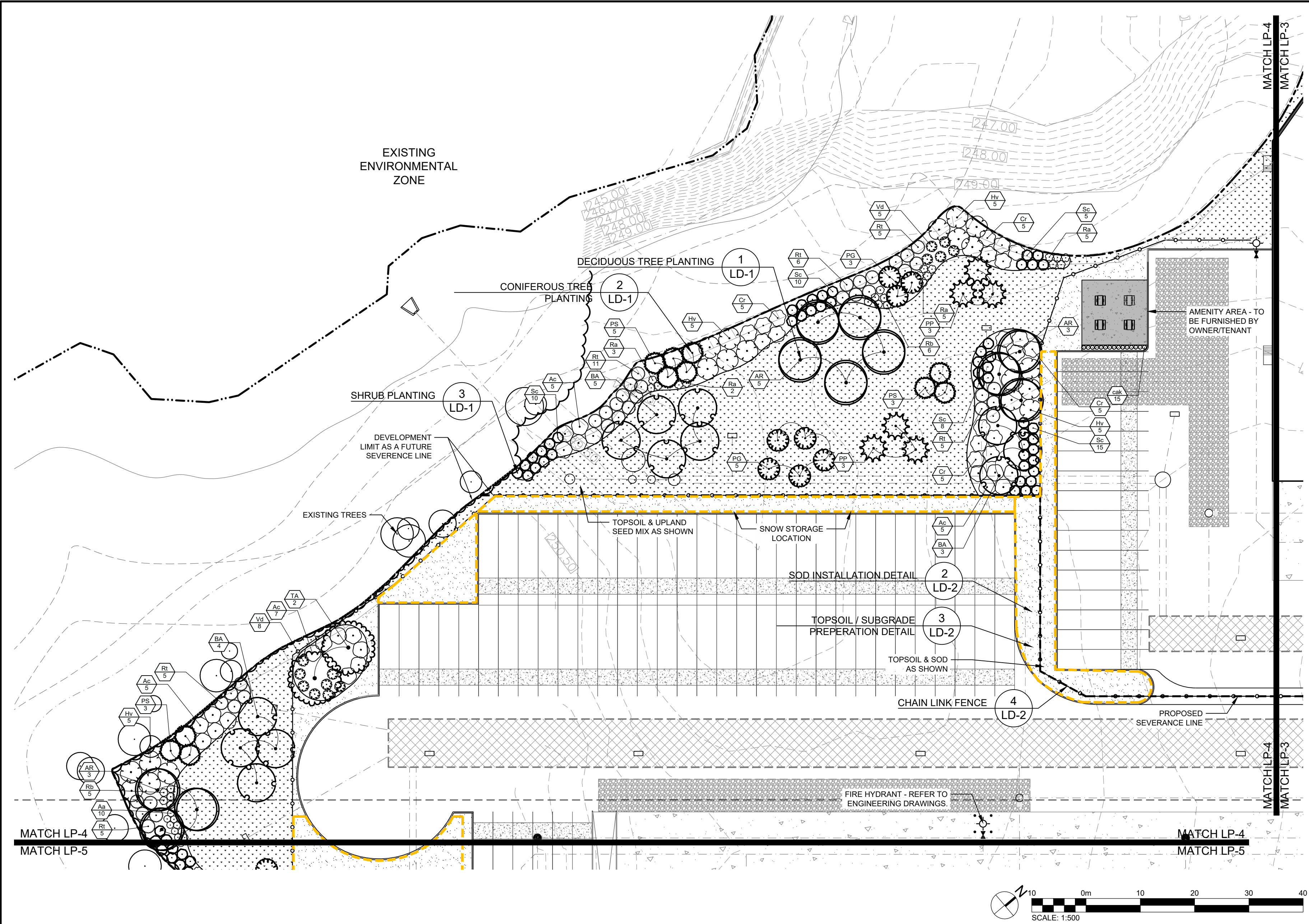
Project		BROCCOLINI ESTATE GROUP AIRPORT ROAD INDUSTRIAL DEVELOPMENT	
Drawing		LANDSCAPE PLAN	
Drawn By	M.M./C.B.	Design By	A.P./C.B.
Check By	A.P.	Check By	T.M.

C CROZIER

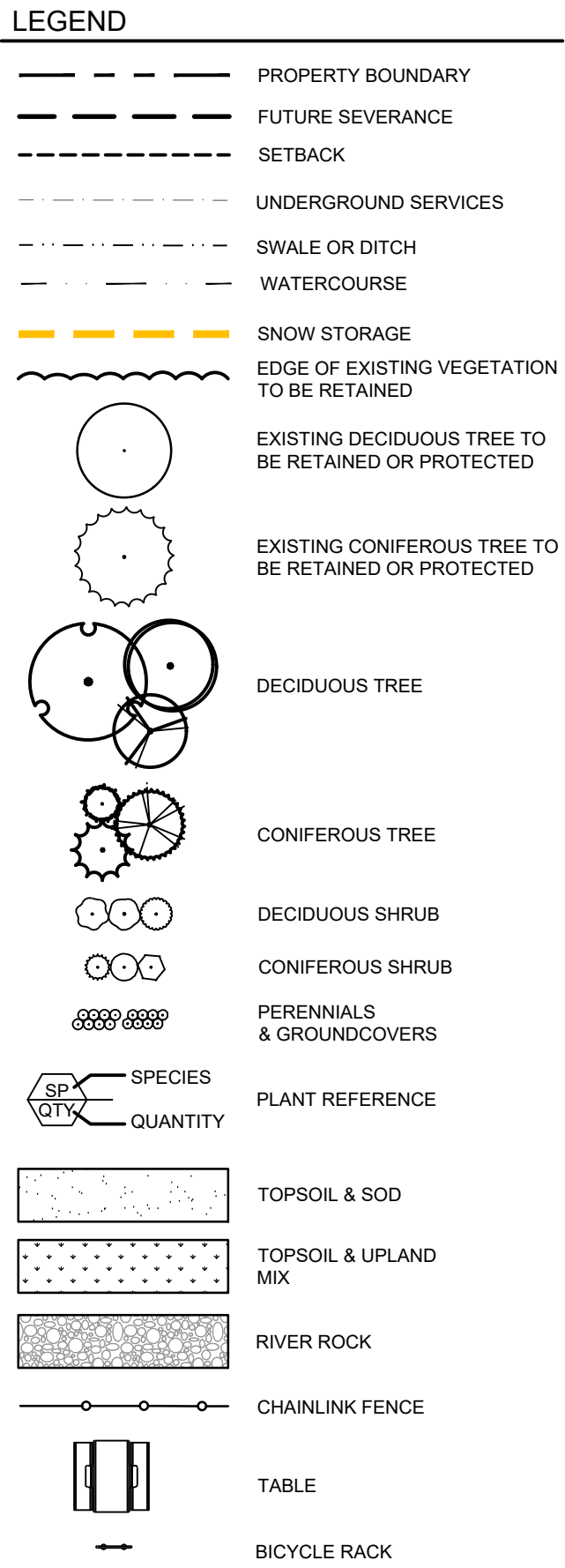
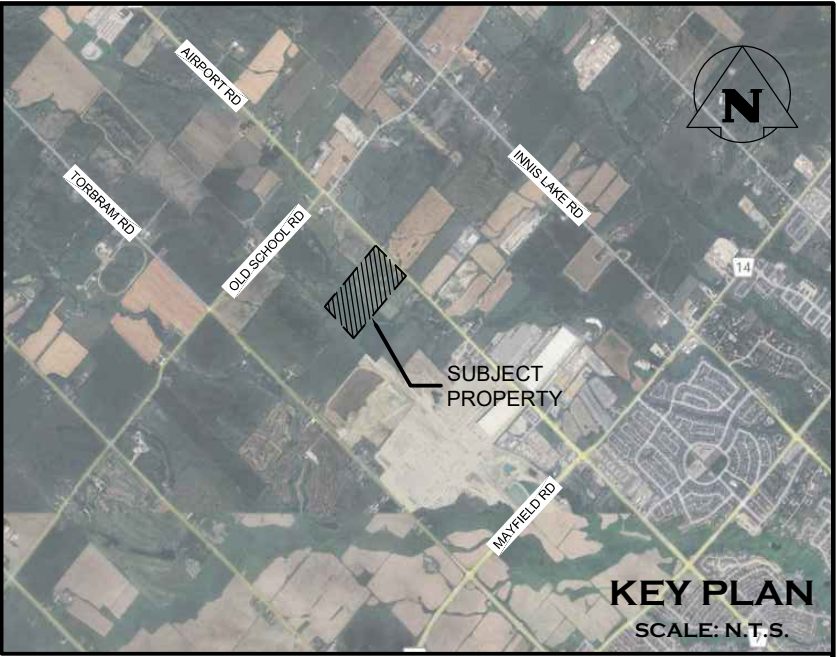
Drawn By: M.M./C.B. Design By: A.P./C.B. Project: 2278-7228

Check By: A.P. Check By: T.M. Drawing: LP-3

C:\Users\delaterra\OneDrive\Documents\Crozier Consulting Engineers\2278-Broccoli\Secondary Plan\Project Files\Landscape\7228_LP-Avg_2025-11-13 2:54:13 PM.DWG To PDF.pc3



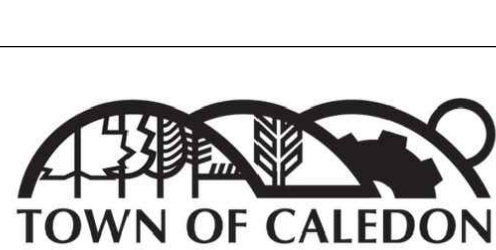
PLANT SCHEDULE LP-4					
CODE	QTY	BOTANICAL NAME	COMMON NAME	SIZE	CONTAINER
CONIFEROUS TREES					
PG	8	Picea glauca	White Spruce	200cm ht.	W. B.
PP	6	Picea pungens	Colorado Spruce	200cm ht.	W. B.
PS	11	Pinus strobus	Eastern White Pine	200cm ht.	W. B.
25	SUBTOTAL:				
DECIDUOUS TREES					
AR	11	Acer rubrum	Red Maple	70mm cal.	W. B.
BA	12	Betula alleghaniensis	Yellow Birch	70mm cal.	W. B.
TA	2	Tilia americana	Basswood	70mm cal.	W. B.
25	SUBTOTAL:				
DECIDUOUS SHRUBS					
Ac	22	Amelanchier canadensis	Canadian Serviceberry Multi-trunk	125 cm	7 gal. pot
As	9	Aronia arbutifolia 'Brilliantissima'	Brilliant Red Chokeberry	50 cm wt.	3 gal. pot
Cr	20	Cornus racemosa	Gray Dogwood	60 cm ht.	3 gal. pot
Hv	20	Hamelis virginiana	Common Witch Hazel	80 cm	7 gal. pot
Rt	37	Rhus typhina	Slaghorn Sumac	50cm	3 gal. pot
Ra	15	Ribes americanum	American Black Currant	40cm	3 gal. pot
Rb	11	Rosa blanda	Smooth Rose	40cm	2 gal. pot
Sc	51	Sambucus canadensis	American Elderberry	40cm	3 gal. pot
Vg	13	Viburnum dentatum	Arrowwood	40cm	3 gal. pot
198	SUBTOTAL:				
GRASSES					
ca	15	Calamagrostis x acutiflora 'Karl Foerster'	Karl Foerster Feather Reed Grass	---	
15	SUBTOTAL:				



- GENERAL NOTES:**
- FOR LANDSCAPE DETAILS, SPECIFICATIONS AND STANDARD NOTES, REFER TO DRAWING LD-1 TO LD-3.
 - FOR MASTER PLANT SCHEDULE, REFER TO DRAWING LD-3.
 - FOR SEED SCHEDULE, REFER TO DRAWING LP-5.
 - MINIMUM CLEARANCES FOR TREES ARE AS FOLLOWS:
 - 2M FROM WATER HYDRANTS
 - 2M FROM DRIVEWAYS
 - 2M FROM NEIGHBOURHOOD MAILBOXES
 - 3M FROM HYDRO TRANSFORMERS
 - 5M FROM STREETLIGHTS
 - 15M MINIMUM FROM STREET LINE AND BEHIND THE DAYLIGHT TRIANGLE AS PER THE GEODETIC DESIGN STANDARDS FOR ONTARIO HIGHWAYS
 - THE TREE PITS AND PLANTING BEDS FOR ALL TREES AND SHRUBS LOCATED WITHIN 1 METRE OF UNDERGROUND UTILITIES ARE TO BE HAND DUG.

- THIS DRAWING IS THE EXCLUSIVE PROPERTY OF C.F. CROZIER & ASSOCIATES INC. AND THE MODIFICATION AND/OR REPRODUCTION OF ANY PART OF THIS DRAWING IS STRICTLY PROHIBITED WITHOUT WRITTEN AUTHORIZATION FROM THIS OFFICE.
- THE DIGITAL FILES CONTAIN INTELLECTUAL AND DIGITAL DATA PROPERTY THAT IS THE EXCLUSIVE PROPERTY OF C.F. CROZIER & ASSOCIATES INC.
- THE CONTRACTOR SHALL VERIFY ALL DIMENSIONS, LEVELS, AND DATUMS ON SITE AND REPORT ANY DISCREPANCIES OR OMISSIONS TO C.F. CROZIER & ASSOCIATES INC. PRIOR TO CONSTRUCTION.
- THIS DRAWING IS TO BE READ AND UNDERSTOOD IN CONJUNCTION WITH ALL OTHER PLANS AND DOCUMENTS APPLICABLE TO THIS PROJECT.
- ALL EXISTING UNDERGROUND UTILITIES TO BE VERIFIED IN THE FIELD BY THE CONTRACTOR PRIOR TO CONSTRUCTION.
- DO NOT SCALE DRAWINGS.

- NOTES:**
- TOPOGRAPHIC SURVEY PROVIDED BY R-PE SURVEYING LTD. AND SITE PLAN PROVIDED BY POWERS BROWN ARCHITECTURE.
 - BASE CIVIL ENGINEERING INFORMATION PROVIDED BY C.F. CROZIER & ASSOCIATES INC.
 - ALL DIMENSIONS ARE IN METERS UNLESS OTHERWISE NOTED.
 - CONTRACTOR IS RESPONSIBLE FOR LOCATING ALL UTILITIES BEFORE CONSTRUCTION BEGINS.



No.	ISSUE	DATE: YYYY/MM/DD
0	ISSUED FOR 1ST SUBMISSION	2025/11/13



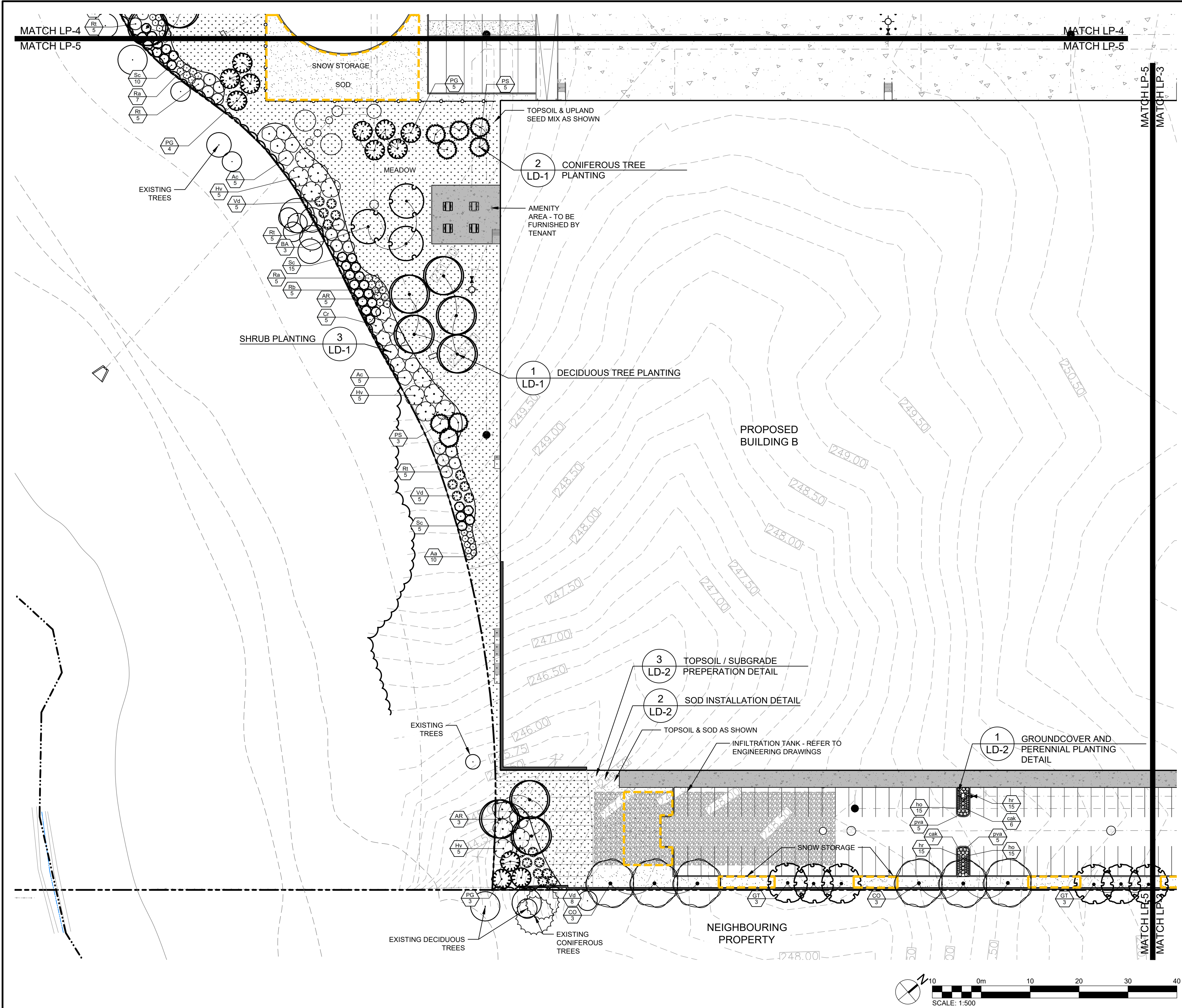
Project
BROCCOLINI ESTATE GROUP
AIRPORT ROAD INDUSTRIAL DEVELOPMENT

Drawing
LANDSCAPE PLAN

C CROZIER

Drawn By	M.M./C.B.	Design By	A.P./C.B.	Project	2278-7228
Check By	A.P.	Check By	T.M.	Drawing	LP-4

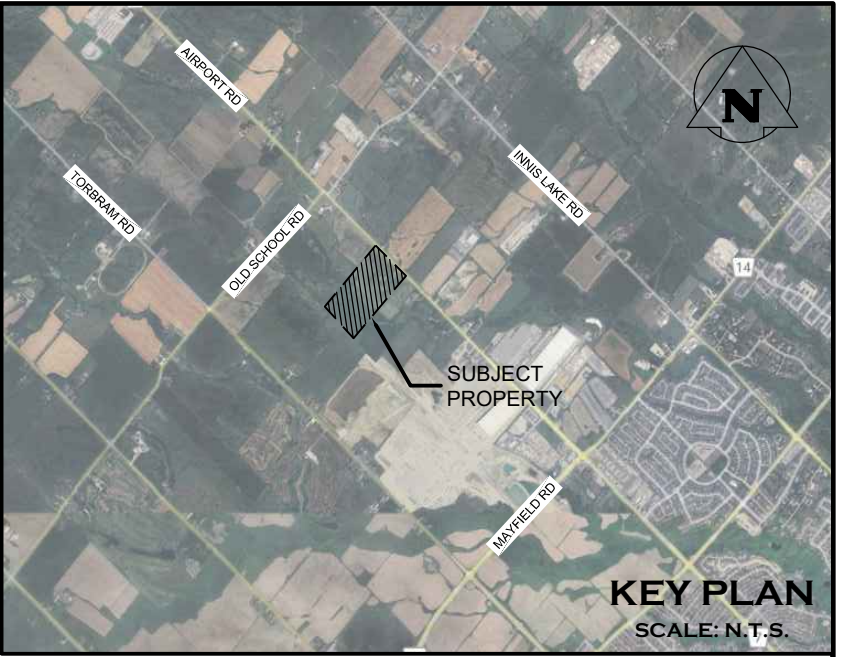
C:\Users\delaterra\OneDrive\Documents\Crozier Consulting Engineers\2278-Broccoli\Secondary Plan\Project Files\Landscape\7228_LP-Avg-2025-11-13 2:52:24 PM.DWG To PDF.pc3



PLANT SCHEDULE LP-5					
CODE	QTY	BOTANICAL NAME	COMMON NAME	SIZE	CONTAINER
CONIFEROUS TREES					
PG	12	Picea glauca	White Spruce	200cm ht.	W.B.
PS	8	Pinus strobus	Eastern White Pine	200cm ht.	W.B.
	20	SUBTOTAL:			
DECIDUOUS TREES					
AR	8	Acer rubrum	Red Maple	70mm cal.	W.B.
BA	3	Betula alleghaniensis	Yellow Birch	70mm cal.	W.B.
CO	6	Celtis occidentalis	Common Hackberry	70mm cal.	W.B.
GT	6	Gleditsia triacanthos var. inermis 'Shademaster'	Shademaster Honey Locust	70mm cal.	W.B.
	23	SUBTOTAL:			
DECIDUOUS SHRUBS					
Ac	10	Amelanchier canadensis	Canadian Serviceberry Multi-trunk	125 cm	7 gal. pot
Aa	11	Aronia arbutifolia 'Brilliantissima'	Brilliant Red Chokeberry	60 cm wt.	3 gal. pot
Cr	5	Cornus racemosa	Gray Dogwood	80 cm ht.	3 gal. pot
Hv	15	Hamelis virginiana	Common Witch Hazel	80 cm	7 gal. pot
Rt	15	Rhus typhina	Slaghorn Sumac	50cm	3 gal. pot
Ra	12	Ribes americanum	American Black Currant	40cm	3 gal. pot
Rb	5	Rosa blanda	Smooth Rose	40cm	2 gal. pot
Sc	27	Sambucus canadensis	American Elderberry	40cm	3 gal. pot
Vd	18	Viburnum dentatum	Arrowwood	40cm	3 gal. pot
	118	SUBTOTAL:			
GRASSES					
caK	113	Calamagrostis x acutiflora 'Karl Foerster'	Karl Foerster Feather Reed Grass	---	---
pva	10	Panicum virgatum 'Apache Rose'	Apache Rose Switch Grass	---	1 gal. pot
	23	SUBTOTAL:			
PERENNIALS					
hr	30	Hemerocallis x 'Ruby Stella'	Ruby Stella Daylily	---	1 gal. pot
ho	30	Hemerocallis x 'Stella de Oro'	Stella de Oro Daylily	---	1 gal. pot
	60	SUBTOTAL:			

SEED MIX			
KEY	BOTANICAL NAME	COMMON NAME	%
UPLAND MIX (CVC-1)			
	Anemone canadensis	Canada Anemone	1%
	Asclepias syriaca	Common Milkweed	2%
	Carex granularis	Limestone/Meadow Sedge	15%
	Elymus riparius	Eastern Riverbank Wild Rye	40%
	Euthamia graminifolia	Grass Leaved Goldenrod	1%
	Monarda fistulosa	Wild Bergamot	1%
	Oenothera biennis	Common Evening Primrose	25%
	Rudbeckia hirta	Black Eyed Susan	10%
	Solidago canadensis	Canda Goldenrod	1%
	Solidago juncea	Early Goldenrod	1%
	Solidago nemoralis	Gray Stemmed Goldenrod	1%
	Aster novae-angliae	New England Aster	1%
	Verbena urticifolia	White Vervain	1%
Refer to Nurse Crop Schedule for cover crop and application rate. Application rate: 25 kg/ha			

NURSE CROP SCHEDULE			
KEY	BOTANICAL NAME	COMMON NAME	%
SUMMER-FALL COVER			
	Avena sativa	Oats	50%
	Lolium multiflorum	Annual rye	50%
FALL-SPRING COVER			
	Triticum aestivum	Winter Wheat	50%
	Secale cereale	Winter Rye	50%
Sow at 25kg/ha			



LEGEND	
---	PROPERTY BOUNDARY
---	FUTURE SEVERANCE
---	SETBACK
---	UNDERGROUND SERVICES
---	SWALE OR DITCH
---	WATERCOURSE
---	SNOW STORAGE
---	EDGE OF EXISTING VEGETATION TO BE RETAINED
---	EXISTING DECIDUOUS TREE TO BE RETAINED OR PROTECTED
---	EXISTING CONIFEROUS TREE TO BE RETAINED OR PROTECTED
---	DECIDUOUS TREE
---	CONIFEROUS TREE
---	DECIDUOUS SHRUB
---	CONIFEROUS SHRUB
---	PERENNIALS & GROUNDCOVERS
---	SPECIES QUANTITY
---	PLANT REFERENCE
---	TOPSOIL & SOD
---	TOPSOIL & UPLAND MIX
---	RIVER ROCK
---	CHAINLINK FENCE
---	TABLE
---	BICYCLE RACK

- GENERAL NOTES:**
- FOR LANDSCAPE DETAILS, SPECIFICATIONS AND STANDARD NOTES, REFER TO DRAWING LD-1 TO LD-3.
 - FOR MASTER PLANT SCHEDULE, REFER TO DRAWING LD-5.
 - FOR SEED SCHEDULE, REFER TO DRAWING LP-5.
 - MINIMUM CLEARANCES FOR TREES ARE AS FOLLOWS:
 - 2M FROM WATER HYDRANTS
 - 2M FROM DRIVEWAYS
 - 2M FROM NEIGHBOURHOOD MAILBOXES
 - 3M FROM HYDRO TRANSFORMERS
 - 5M FROM STREETLIGHTS
 - 15M MINIMUM FROM STREET LINE AND BEHIND THE DAYLIGHT TRIANGLE AS PER THE GEODETIC DESIGN STANDARDS FOR ONTARIO HIGHWAYS
 - 18M FROM FACE OF ALL WARNING AND REGULATORY SIGNS
 - THE TREE PITS AND PLANTING BEDS FOR ALL TREES AND SHRUBS LOCATED WITHIN 1 METRE OF UNDERGROUND UTILITIES ARE TO BE HAND DUG.

1. THIS DRAWING IS THE EXCLUSIVE PROPERTY OF C.F. CROZIER & ASSOCIATES INC. AND THE MODIFICATION AND/OR REPRODUCTION OF ANY PART OF THIS DRAWING IS STRICTLY PROHIBITED WITHOUT WRITTEN AUTHORIZATION FROM THIS OFFICE.

2. THE DIGITAL FILES CONTAIN INTELLECTUAL AND DIGITAL DATA PROPERTY THAT IS THE EXCLUSIVE PROPERTY OF C.F. CROZIER & ASSOCIATES INC.

3. THE CONTRACTOR SHALL VERIFY ALL DIMENSIONS, LEVELS, AND DATUMS ON SITE AND REPORT ANY DISCREPANCIES OR OMISSIONS TO C.F. CROZIER & ASSOCIATES INC. PRIOR TO CONSTRUCTION.

4. THIS DRAWING IS TO BE READ AND UNDERSTOOD IN CONJUNCTION WITH ALL OTHER PLANS AND DOCUMENTS APPLICABLE TO THIS PROJECT.

5. ALL EXISTING UNDERGROUND UTILITIES TO BE VERIFIED IN THE FIELD BY THE CONTRACTOR PRIOR TO CONSTRUCTION.

6. DO NOT SCALE DRAWINGS.

NOTES:

1. TOPOGRAPHIC SURVEY PROVIDED BY R-PE SURVEYING LTD. AND SITE PLAN PROVIDED BY POWERS BROWN ARCHITECTURE.

2. BASE CIVIL ENGINEERING INFORMATION PROVIDED BY C.F. CROZIER & ASSOCIATES INC.

3. ALL DIMENSIONS ARE IN METERS UNLESS OTHERWISE NOTED.

4. CONTRACTOR IS RESPONSIBLE FOR LOCATING ALL UTILITIES BEFORE CONSTRUCTION BEGINS.

Town of Caledon

No.

ISSUE

DATE: YYYY/MM/DD

0

ISSUED FOR 1ST SUBMISSION

2025/11/13

LANDSCAPE ARCHITECT

R. J. PHILLIPS

MEMBER

ONTARIO ASSOCIATION OF LANDSCAPE ARCHITECTS

Project

BROCCOLINI ESTATE GROUP
AIRPORT ROAD INDUSTRIAL DEVELOPMENT

Drawing

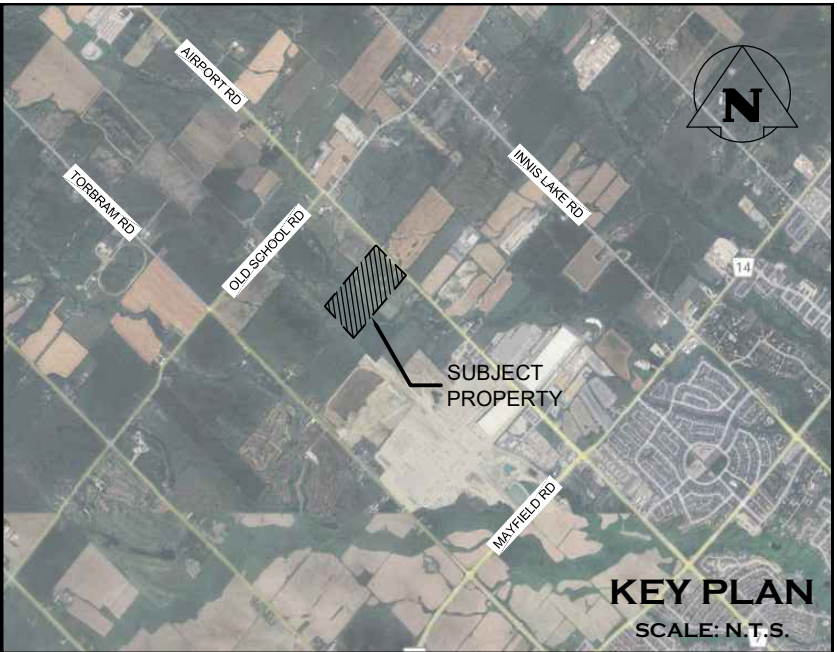
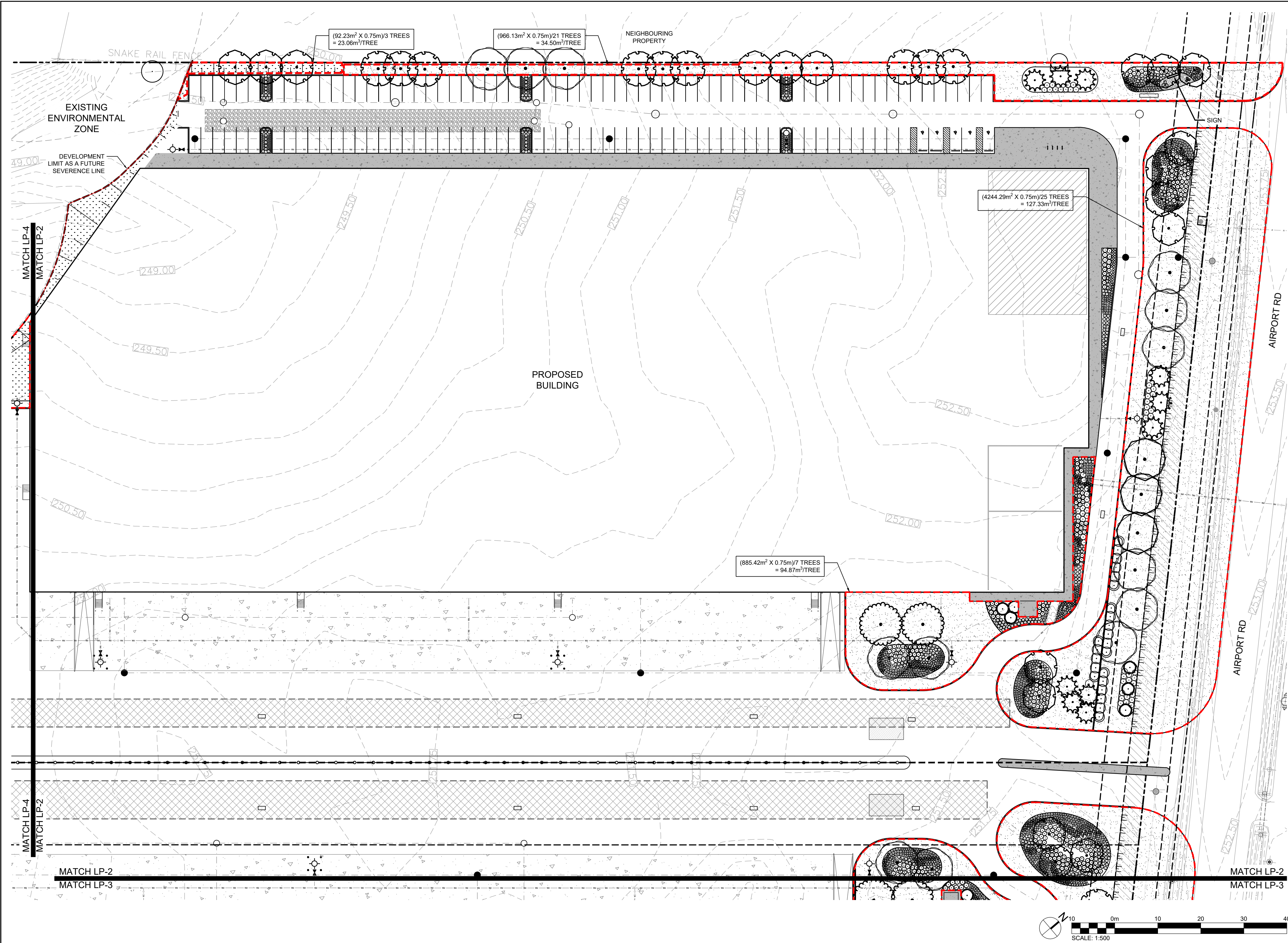
LANDSCAPE PLAN

C CROZIER

Drawn By M.M./C.B. Design By A.P./C.B. Project 2278-7228

Check By A.P. Check By T.M. Drawing LP-5

C:\Users\jmm101\Documents\Crozier Consulting Engineers\2278-Broccolini Secondary Plan\Project Files\Landscape\2278_SVP.dwg, 2025-11-13 3:05:40 PM, DWG To PDF.pc3



- LEGEND**
- PROPERTY BOUNDARY
 - FUTURE SEVERANCE
 - SETBACK
 - WATERCOURSE
 - SOIL VOLUME AREA
 - FIRE HYDRANT
 - WATER VALVE
 - SIGN
 - UNDERGROUND SERVICES
 - SWALE OR DITCH
 - EXISTING DECIDUOUS TREE TO BE RETAINED OR PROTECTED
 - EXISTING CONIFEROUS TREE TO BE RETAINED OR PROTECTED
 - DECIDUOUS TREE
 - CONIFEROUS TREE
 - TOPSOIL & SOD
 - TOPSOIL & MEADOW SEED MIX
 - RIVER ROCK
 - CHAINLINK FENCE

1. THIS DRAWING IS THE EXCLUSIVE PROPERTY OF C.F. CROZIER & ASSOCIATES INC. AND THE MODIFICATION AND/OR REPRODUCTION OF ANY PART OF THIS DRAWING IS STRICTLY PROHIBITED WITHOUT WRITTEN AUTHORIZATION FROM THIS OFFICE.

2. THE DIGITAL FILES CONTAIN INTELLECTUAL AND DIGITAL DATA PROPERTY THAT IS THE EXCLUSIVE PROPERTY OF C.F. CROZIER & ASSOCIATES INC.

3. THE CONTRACTOR SHALL VERIFY ALL DIMENSIONS, LEVELS, AND DATUMS ON SITE AND REPORT ANY DISCREPANCIES OR OMISSIONS TO C.F. CROZIER & ASSOCIATES INC. PRIOR TO CONSTRUCTION.

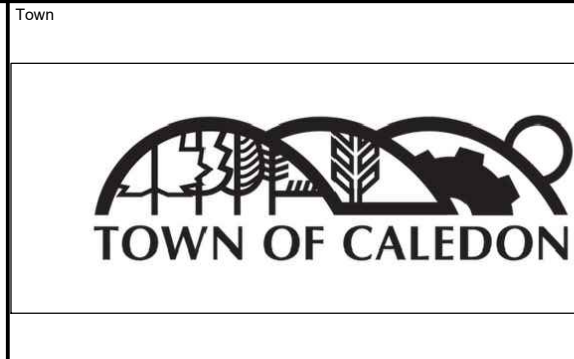
4. THIS DRAWING IS TO BE READ AND UNDERSTOOD IN CONJUNCTION WITH ALL OTHER PLANS AND DOCUMENTS APPLICABLE TO THIS PROJECT.

5. ALL EXISTING UNDERGROUND UTILITIES TO BE VERIFIED IN THE FIELD BY THE CONTRACTOR PRIOR TO CONSTRUCTION.

6. DO NOT SCALE DRAWINGS.

NOTES:

- TOPOGRAPHIC SURVEY PROVIDED BY R-PE SURVEYING LTD. AND SITE PLAN PROVIDED BY POWERS BROWN ARCHITECTURE.
- BASE CIVIL ENGINEERING INFORMATION PROVIDED BY C.F. CROZIER & ASSOCIATES INC.
- ALL DIMENSIONS ARE IN METERS UNLESS OTHERWISE NOTED.
- CONTRACTOR IS RESPONSIBLE FOR LOCATING ALL UTILITIES BEFORE CONSTRUCTION BEGINS.



No.	ISSUE
0	ISSUED FOR 1ST SUBMISSION

DATE: YYYY/MM/DD
2025/11/13




Project

BROCCOLINI ESTATE GROUP
AIRPORT ROAD INDUSTRIAL DEVELOPMENT

Drawing

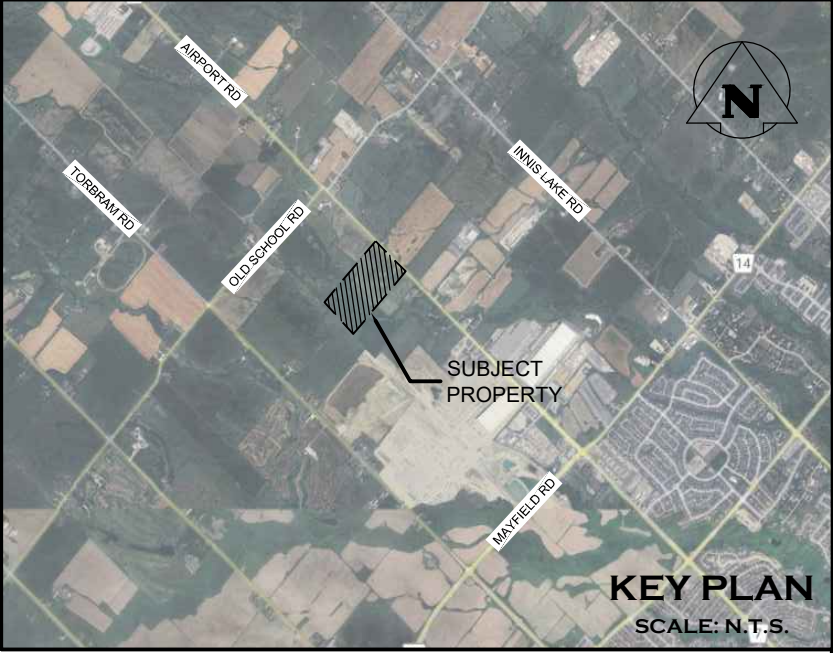
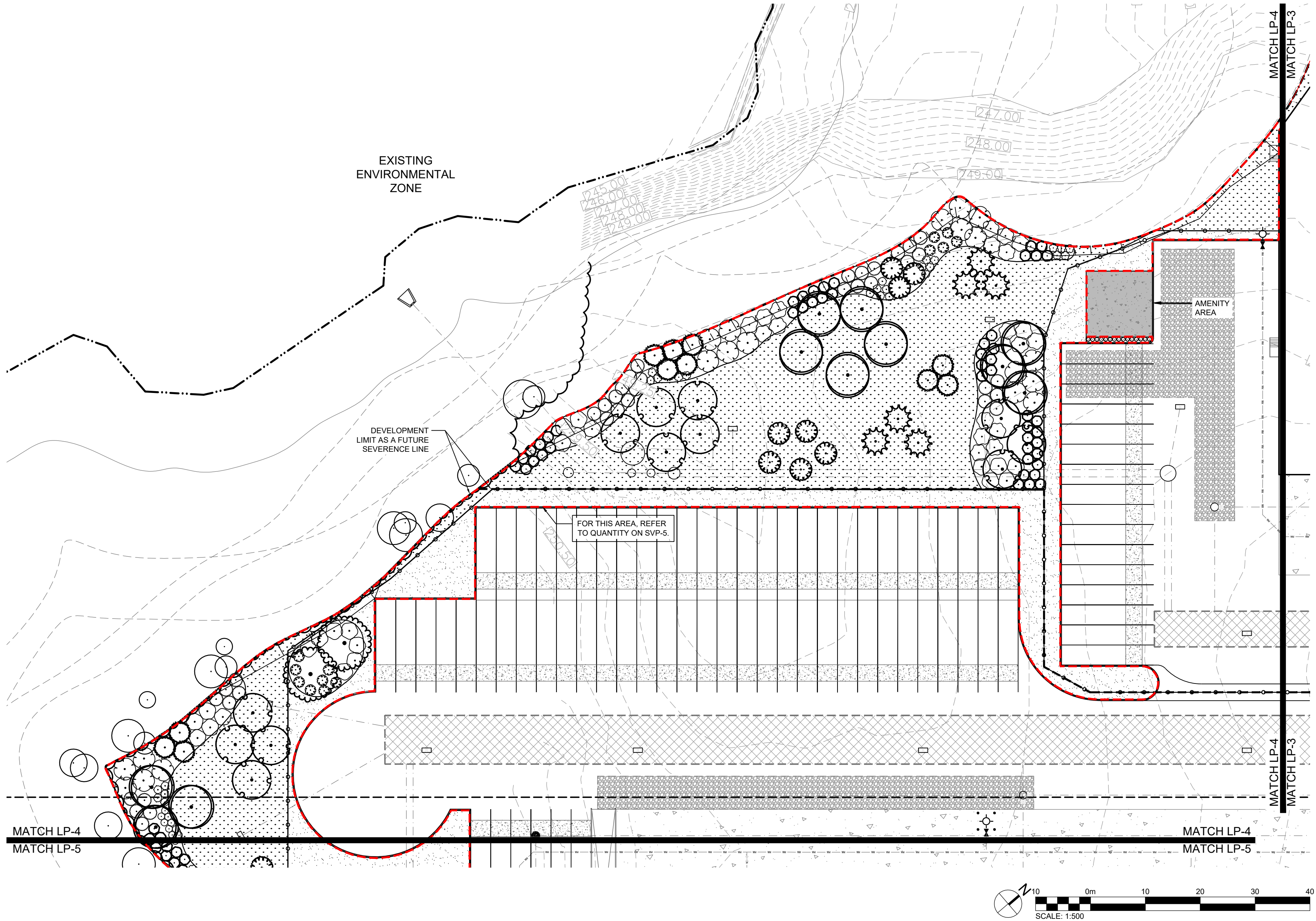
SOIL VOLUME PLAN



CROZIER

Drawn By	M.M./C.B.	Design By	A.P./C.B.	Project	2278-7228
Check By	A.P.	Check By	T.M.	Drawing	SVP-1

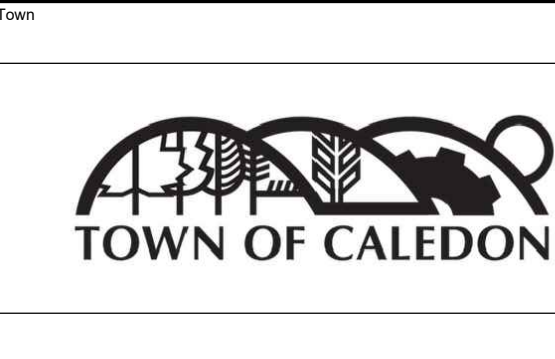
C:\Users\mimil\OneDrive\Documents\Crozier Consulting Engineers\2278-7228-Broccolini Secondary Plan\Project Files\Landscape\7228_SVP.dwg, 2025-11-13 3:06:33 PM, DWG To PDF.pc3



LEGEND	
	PROPERTY BOUNDARY
	FUTURE SEVERANCE
	SETBACK
	WATERCOURSE
	SOIL VOLUME AREA
	FIRE HYDRANT
	WATER VALVE
	SIGN
	UNDERGROUND SERVICES
	SWALE OR DITCH
	EDGE OF VEGETATION TO BE RETAINED AND PROTECTED
	EXISTING DECIDUOUS TREE TO BE RETAINED OR PROTECTED
	EXISTING CONIFEROUS TREE TO BE RETAINED OR PROTECTED
	DECIDUOUS TREE
	CONIFEROUS TREE
	TOPSOIL & SOD
	TOPSOIL & MEADOW SEED MIX
	RIVER ROCK
	CHAINLINK FENCE

- THIS DRAWING IS THE EXCLUSIVE PROPERTY OF C.F. CROZIER & ASSOCIATES INC. AND THE MODIFICATION AND/OR REPRODUCTION OF ANY PART OF THIS DRAWING IS STRICTLY PROHIBITED WITHOUT WRITTEN AUTHORIZATION FROM THIS OFFICE.
- THE DIGITAL FILES CONTAIN INTELLECTUAL AND DIGITAL DATA PROPERTY THAT IS THE EXCLUSIVE PROPERTY OF C.F. CROZIER & ASSOCIATES INC.
- THE CONTRACTOR SHALL VERIFY ALL DIMENSIONS, LEVELS AND DATUMS ON SITE AND REPORT ANY DISCREPANCIES OR OMISSIONS TO C.F. CROZIER & ASSOCIATES INC. PRIOR TO CONSTRUCTION.
- THIS DRAWING IS TO BE READ AND UNDERSTOOD IN CONJUNCTION WITH ALL OTHER PLANS AND DOCUMENTS APPLICABLE TO THIS PROJECT.
- ALL EXISTING UNDERGROUND UTILITIES TO BE VERIFIED IN THE FIELD BY THE CONTRACTOR PRIOR TO CONSTRUCTION.
- DO NOT SCALE DRAWINGS.

- NOTES:
- TOPOGRAPHIC SURVEY PROVIDED BY R-PE SURVEYING LTD. AND SITE PLAN PROVIDED BY POWERS BROWN ARCHITECTURE.
 - BASE CIVIL ENGINEERING INFORMATION PROVIDED BY C.F. CROZIER & ASSOCIATES INC.
 - ALL DIMENSIONS ARE IN METERS UNLESS OTHERWISE NOTED.
 - CONTRACTOR IS RESPONSIBLE FOR LOCATING ALL UTILITIES BEFORE CONSTRUCTION BEGINS.



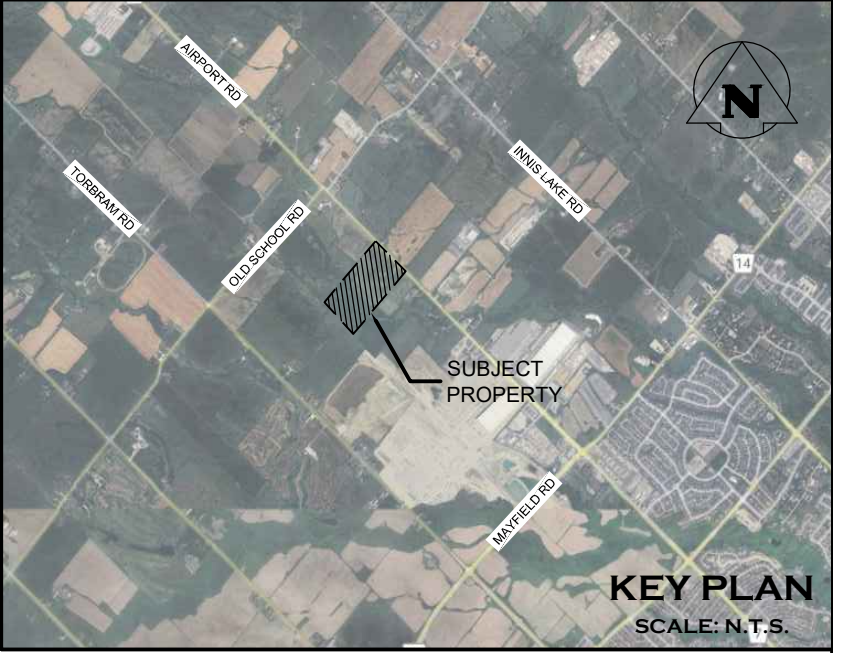
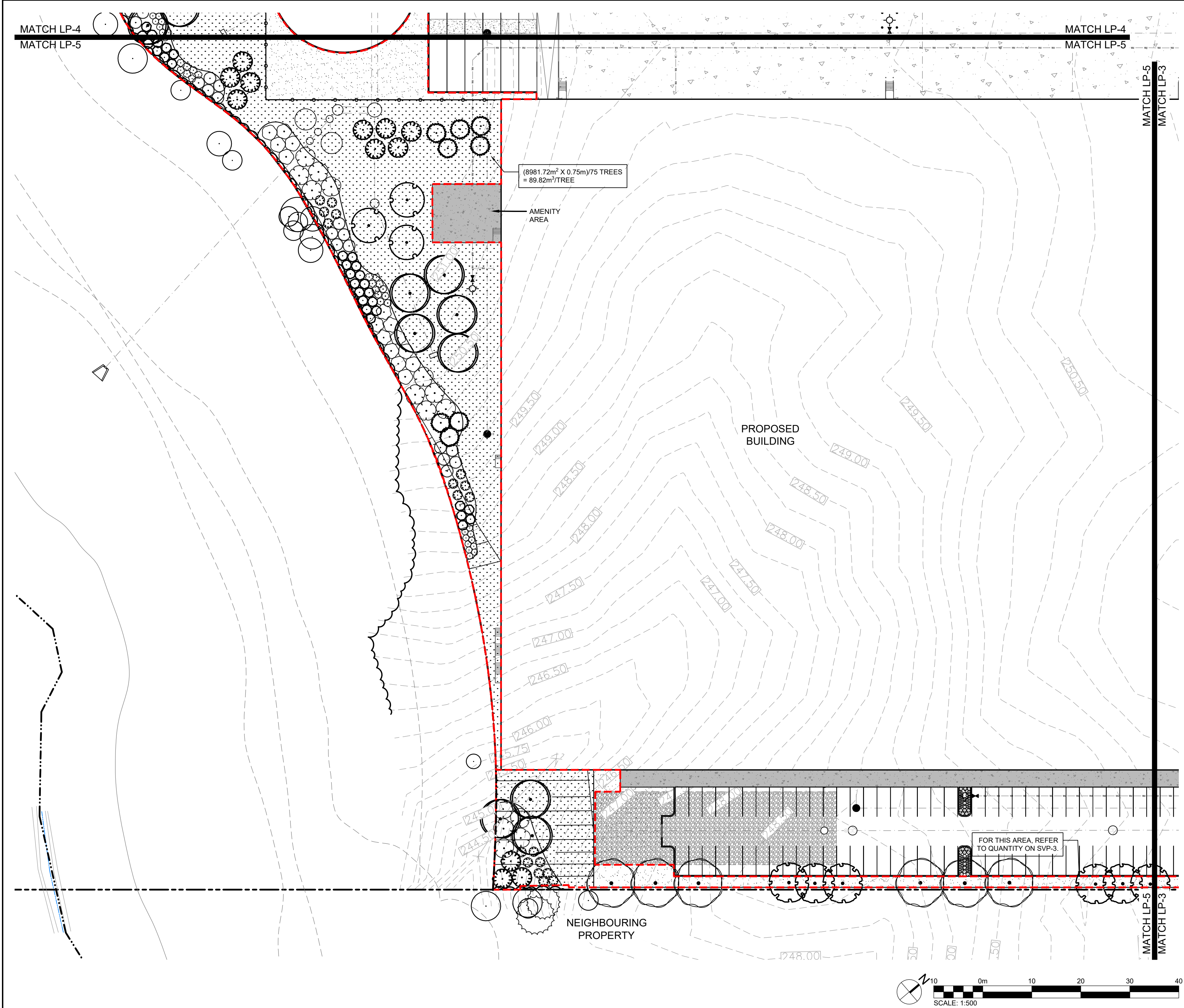
No.	ISSUE	DATE: YYYY/MM/DD
0	ISSUED FOR 1ST SUBMISSION	2025/11/13



Project		BROCCOLINI ESTATE GROUP AIRPORT ROAD INDUSTRIAL DEVELOPMENT	
Drawing		SOIL VOLUME PLAN	

Drawn By	M.M./C.B.	Design By	A.P./C.B.	Project	2278-7228
Check By	A.P.	Check By	T.M.	Drawing	SVP-3

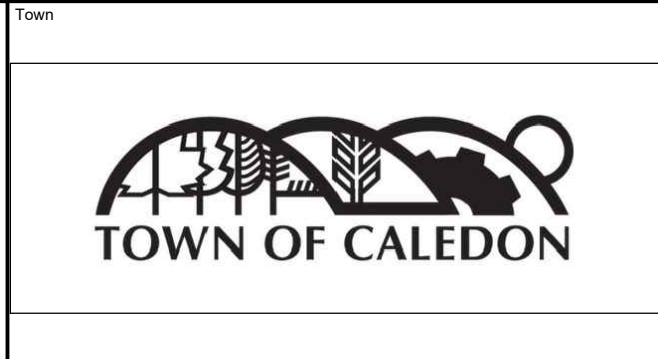
C:\Users\mimilini\Documents\Crozier Consulting Engineers\2278-7228-Broccolini Secondary Plan\Project Files\Landscape\7228_SVP.dwg, 2025-11-13 3:07:02 PM, DWG To PDF.pc3



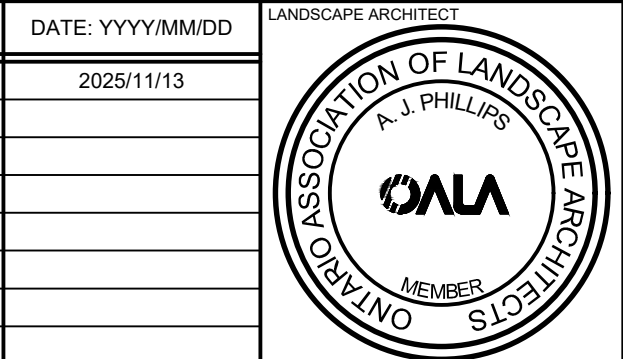
LEGEND	
	PROPERTY BOUNDARY
	FUTURE SEVERANCE
	SETBACK
	WATERCOURSE
	SOIL VOLUME AREA
	FIRE HYDRANT
	WATER VALVE
	SIGN
	UNDERGROUND SERVICES
	SWALE OR DITCH
	EDGE OF VEGETATION TO BE RETAINED AND PROTECTED
	EXISTING DECIDUOUS TREE TO BE RETAINED OR PROTECTED
	EXISTING CONIFEROUS TREE TO BE RETAINED OR PROTECTED
	DECIDUOUS TREE
	CONIFEROUS TREE
	TOPSOIL & SOD
	TOPSOIL & MEADOW SEED MIX
	RIVER ROCK
	CHAINLINK FENCE

- THIS DRAWING IS THE EXCLUSIVE PROPERTY OF C.F. CROZIER & ASSOCIATES INC. AND THE MODIFICATION AND/OR REPRODUCTION OF ANY PART OF THIS DRAWING IS STRICTLY PROHIBITED WITHOUT WRITTEN AUTHORIZATION FROM THIS OFFICE.
- THE DIGITAL FILES CONTAIN INTELLECTUAL AND DIGITAL DATA PROPERTY THAT IS THE EXCLUSIVE PROPERTY OF C.F. CROZIER & ASSOCIATES INC.
- THE CONTRACTOR SHALL VERIFY ALL DIMENSIONS, LEVELS, AND DATUMS ON SITE AND REPORT ANY DISCREPANCIES OR OMISSIONS TO C.F. CROZIER & ASSOCIATES INC. PRIOR TO CONSTRUCTION.
- THIS DRAWING IS TO BE READ AND UNDERSTOOD IN CONJUNCTION WITH ALL OTHER PLANS AND DOCUMENTS APPLICABLE TO THIS PROJECT.
- ALL EXISTING UNDERGROUND UTILITIES TO BE VERIFIED IN THE FIELD BY THE CONTRACTOR PRIOR TO CONSTRUCTION.
- DO NOT SCALE DRAWINGS.

- NOTES:
- TOPOGRAPHIC SURVEY PROVIDED BY R-PE SURVEYING LTD. AND SITE PLAN PROVIDED BY POWERS BROWN ARCHITECTURE.
 - BASE CIVIL ENGINEERING INFORMATION PROVIDED BY C.F. CROZIER & ASSOCIATES INC.
 - ALL DIMENSIONS ARE IN METERS UNLESS OTHERWISE NOTED.
 - CONTRACTOR IS RESPONSIBLE FOR LOCATING ALL UTILITIES BEFORE CONSTRUCTION BEGINS.



No.	ISSUE	DATE: YYYY/MM/DD
0	ISSUED FOR 1ST SUBMISSION	2025/11/13



Project

BROCCOLINI ESTATE GROUP
AIRPORT ROAD INDUSTRIAL DEVELOPMENT

Soil Volume Plan

Drawn By	M.M./C.B.	Design By	A.P./C.B.	Project	2278-7228
Check By	A.P.	Check By	T.M.	Drawing	SVP-4

C:\Users\delaterra\OneDrive\Documents\Crozier Consulting Engineers\2728-Broccoli\Secondary Plant\Project Files\Landscape\7228_LD.dwg, 2025-11-13 3:05:12 PM, DWG To PDF, p.3

NOTES:

1. WILTPROOF IN NURSERY PRIOR TO DELIVERY.

2. PRUNING SHALL BE LIMITED TO DEAD, DISEASED OR BROKEN BRANCHES AFTER PLANTING. MAINTAIN ORIGINAL SHAPE OF THE TREE. DO NOT TRIM LEADER BRANCH.

3. SET TOP OF ROOT BALL 75-100mm HIGHER THAN ADJACENT FINISHED GRADE TO ALLOW FOR SETTLEMENT.

12mm DIAMETER BLACK RUBBER HOSE LOOPED ABOVE FIRST STRONG BRANCH

12-GAUGE GALVANIZED WIRE ENCLOSED IN 12mm DIAMETER RUBBER HOSE SECURED AROUND TREE TRUNK. PROVIDE WIRE TURNBUCKLE FOR TENSION ADJUSTMENT

RODENT PROTECTION TO BE REMOVED PRIOR TO FINAL ASSUMPTION / INSPECTION

MIN. TWO 2400mm, LONG 50mm SQUARE PRESSURE-TREATED WOOD STAKES SECURED INTO GROUND AS SHOWN ENSURE STAKES ARE INSTALLED STRAIGHT

PROVIDE APPROVED SPIRAL PLASTIC RODENT GUARD

CONSTRUCT 100mm SOIL SAUCER AROUND TREE BASE AND COVER WITH 75mm APPROVED SHREDDED PINE MULCH

SLOPE SITUATION

SPECIFIED TRIPLE MIX SOIL MIXTURE FIRMLY COMPACTED TO ELIMINATE AIR POCKETS AND PREVENT SETTLEMENT

COMPACTED SUBGRADE

SET TREE STAKES JUST INSIDE TREE PIT AS SHOWN

SLOPE SITUATION

FINISHED GRADE

CUT AND REMOVE TOP 1/3 OF BURLAP FROM ROOTBALL, INCLUDING ALL TIE ROPE AND WIRE

SCARIFY, LOOSEN, AND IRRIGATE THE INSIDE OF THE TREE PIT PRIOR TO PLANTING

PROVIDE 75mm SOIL MOUND AT BASE OF PIT AS SHOWN

1850

MINIMUM 1500 BRANCH CLEARANCE

MIN. 300

VARIES

NTS

TOWN OF CALEDON

DECIDUOUS TREE PLANTING

2

STANDARD No. 700 NOW 800

JAN 18

APRD: B.B.

DATE: JUNE 08

1

STANDARD No. 1100 NOW 700

JUNE 08

DRAWN: abal

SCALE: NTS

NO.

REVISION

APR'D

DATE

STANDARD No. 800

1 LD-1 DECIDUOUS TREE PLANTING

NTS

NOTES:

1. TREE SHALL BE MEASURED TO HEIGHT OF LAST YEAR'S GROWTH.

2. PRUNING SHALL BE LIMITED TO DEAD OR BROKEN BRANCHES AFTER PLANTING. MAINTAIN ORIGINAL SHAPE OF TREE. DO NOT TRIM LEADER BRANCH.

3. SET TREE 75-100mm HIGHER THAN ADJACENT FINISHED GRADE TO ALLOW FOR SETTLEMENT.

12MM DIAMETER BLACK RUBBER HOSE

TWO 2400MM LONG 50MM SQUARE PRESSURE-TREATED WOOD STAKES SECURED INTO GROUND AS SHOWN

CONSTRUCT 100mm SOIL SAUCER AROUND TREE BASE AND COVER WITH 75mm APPROVED SHREDDED WOOD MULCH

FINISHED GRADE

SPECIFIED SOIL MIXTURE FIRMLY COMPACTED TO ELIMINATE AIR POCKETS AND PREVENT SETTLEMENT

CUT AND REMOVE TOP 1/3 OF BURLAP FROM ROOTBALL, INCLUDING ALL TIE ROPE AND WIRE

COMPACTED SUBGRADE

12-GAUGE GALVANIZED WIRE ENCLOSED IN 12MM DIAMETER RUBBER HOSE SECURED AROUND THE TREE TRUNK. PROVIDE WIRE TURNBUCKLE FOR TENSION ADJUSTMENT

SCARIFY, LOOSEN, IRRIGATE AND FERTILIZE THE INSIDE OF THE TREE PIT PRIOR TO PLANTING

PROVIDE 75mm SOIL MOUND AT BASE OF PIT AS SHOWN

1850

MIN. 300

VARIES

NTS

TOWN OF CALEDON

CONIFEROUS TREE PLANTING

2

STANDARD No. 701 NOW 801

APR 19

APRD: C.C.

DATE: JUNE 08

1

STANDARD No. 1105 NOW 701

JUNE 08

DRAWN: ABAL

SCALE: NTS

NO.

REVISION

APR'D

DATE

STANDARD No. 801

2 LD-1 CONIFEROUS TREE PLANTING

NTS

NOTES:

1. SHRUB HEIGHT SHALL BE MEASURED FROM FINISHED GRADE TO UPPER MAIN MASS OF SHRUB BRANCHES.

2. SHRUBS PLANTED IN GROUPS SHALL BE SET IN CONTINUOUS BEDS AS SHOWN ON PLAN.

3. SET SHRUBS 50mm HIGHER THAN ADJACENT FINISHED GRADE TO ALLOW FOR SETTLEMENT.

4. PLANTING METHOD ILLUSTRATED APPLIES EQUALLY TO BARE ROOT, POTTED, OR B&B NURSERY STOCK.

PRUNING SHALL BE LIMITED TO DEAD OR BROKEN BRANCHES AFTER PLANTING. MAINTAIN ORIGINAL SHAPE OF SHRUB. DO NOT TRIM LEADER BRANCH.

DO NOT PLACE MULCH WITHIN 50MM FROM SHRUB BASE

CONSTRUCT 100mm SOIL SAUCER AROUND TREE BASE AND COVER WITH 75mm APPROVED SHREDDED WOOD MULCH OVER ENTIRE BED AREA

BIODEGRADABLE WEED BARRIER TO BE APPROVED BY TOWN STAFF PRIOR TO INSTALLATION

SPECIFIED SOIL MIXTURE FIRMLY COMPACTED TO ELIMINATE AIR POCKETS AND PREVENT SETTLEMENT

REMOVE NURSERY POTS OR WRAP PRIOR TO PLANTING

COMPACTED SUBGRADE

FINISHED GRADE

SCARIFY, LOOSEN, IRRIGATE AND FERTILIZE THE INSIDE OF THE SHRUB BED PRIOR TO PLANTING

EXCAVATE AND PREPARE PLANTING BED TO MINIMUM 500mm DEPTH AS SPECIFIED

PLANT HEIGHT MEASUREMENT

MIN. 500mm

MIN. 300

NTS

TOWN OF CALEDON

SHRUB PLANTING

3

STANDARD No. 702 NOW 802

APR 19

APRD: C.C.

DATE: JUNE 08

2

STANDARD No. 1110 NOW 702

JUNE 08

DRAWN: abal

SCALE: NTS

1

WEED BARRIER ADDED

MARCH 08

NO.

REVISION

APR'D

DATE

STANDARD No. 802

3 LD-1 SHRUB PLANTING

NTS

GENERAL NOTES - LANDSCAPING

NOTE 1
DEPICTED ON THIS PLAN ARE THE SPECIES AND THE APPROXIMATE LOCATION OF STREET TREE. ONCE DRIVEWAYS, UTILITIES AND LIGHT STANDARDS HAVE BEEN INSTALLED, THE EXACT LOCATION OF STREET TREES WILL BE DETERMINED ON SITE BY THE LANDSCAPE CONSULTANT AND APPROVED BY THE MUNICIPALITY PRIOR TO PLANTING.

NOTE 2
MINIMUM CLEARANCES FOR STREET TREES (WHEN TREES ARE PLANTED 1.5M FROM THE CURB):
2M FROM WATER HYDRANTS
2M FROM DRIVEWAYS
2M FROM NEIGHBOURHOOD MAILBOXES
3M FROM HYDRO TRANSFORMERS
5M FROM STREETLIGHTS
15M MINIMUM FROM STREET LINE (STREET INTERSECTION AS MEASURED FROM BACK OF CURB) AND BEHIND THE DAYLIGHT TRIANGLE AS PER THE GEOMETRIC DESIGN STANDARDS FOR ONTARIO HIGHWAYS
18M FROM FACE OF ALL WARNING AND REGULATORY SIGNS

NOTE 3
THE TREE PITS AND PLANTING BEDS FOR ALL TREES AND SHRUBS LOCATED WITHIN 1 METRE OF UNDERGROUND UTILITIES ARE TO BE HAND DUG.

TOWN OF CALEDON

GENERAL LANDSCAPING NOTES

2

TEXT REVISION, STD103 NOW 700

JAN 18

APRD: C.C.

DATE: APRIL 2000

1

STANDARD No. 130 NOW 103

JUNE 08

DRAWN: BJM

SCALE: NTS

NO.

REVISION

APR'D

DATE

STANDARD No. 700

4 LD-1 GENERAL LANDSCAPING NOTES

NTS

- THIS DRAWING IS THE EXCLUSIVE PROPERTY OF C.F. CROZIER & ASSOCIATES INC. AND THE MODIFICATION AND/OR REPRODUCTION OF ANY PART OF THIS DRAWING IS STRICTLY PROHIBITED WITHOUT WRITTEN AUTHORIZATION FROM THIS OFFICE.
- THE DIGITAL FILES CONTAIN INTELLECTUAL AND DIGITAL DATA PROPERTY THAT IS THE EXCLUSIVE PROPERTY OF C.F. CROZIER & ASSOCIATES INC.
- THE CONTRACTOR SHALL VERIFY ALL DIMENSIONS, LEVELS, AND DATUMS ON SITE AND REPORT ANY DISCREPANCIES OR OMISSIONS TO C.F. CROZIER & ASSOCIATES INC. PRIOR TO CONSTRUCTION.
- THIS DRAWING IS TO BE READ AND UNDERSTOOD IN CONJUNCTION WITH ALL OTHER PLANS AND DOCUMENTS APPLICABLE TO THIS PROJECT.
- ALL EXISTING UNDERGROUND UTILITIES TO BE VERIFIED IN THE FIELD BY THE CONTRACTOR PRIOR TO CONSTRUCTION.
- DO NOT SCALE DRAWINGS.

NOTES:

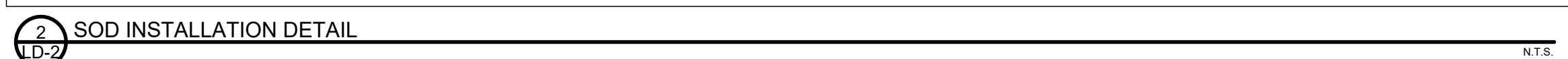
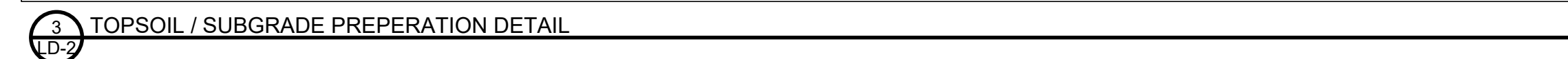
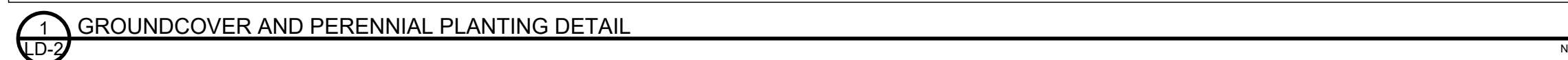
- TOPOGRAPHIC SURVEY PROVIDED BY R-PE SURVEYING LTD. AND SITE PLAN PROVIDED BY POWERS BROWN ARCHITECTURE.
- BASE CIVIL ENGINEERING INFORMATION PROVIDED BY C.F. CROZIER & ASSOCIATES INC.
- ALL DIMENSIONS ARE IN METERS UNLESS OTHERWISE NOTED.
- CONTRACTOR IS RESPONSIBLE FOR LOCATING ALL UTILITIES BEFORE CONSTRUCTION BEGINS.

No.	ISSUE	DATE: YYYY/MM/DD
0	ISSUED FOR 1ST SUBMISSION	2025/11/13

BROCCOLINI ESTATE GROUP
AIRPORT ROAD INDUSTRIAL DEVELOPMENT

LANDSCAPE DETAILS

Drawn By	M.M./C.B.	Design By	A.P./C.B.	Project	2278-7228
Check By	A.P.	Check By	T.M.	Drawing	LD-1



- | | | |
|-----------------------|------------------------|----------------------|
| Drawn By
M.M./C.B. | Design By
A.P./C.B. | Project
2278-7228 |
| Check By
A.P. | Check By
T.M. | Drawing
LD-2 |

C:\Users\delaterra\OneDrive\Documents\Crozier Consulting Engineers\2278-Broccoli\Secondary Plant\Project Files\Landscape\7228_LD.dwg, 2025-11-13 3:06:55 PM, DWG To PDF, p.43

GENERAL NOTES

- ANY AMBIGUITY IN THE DRAWINGS, SPECIFICATIONS OR DETAILS ARE TO BE REPORTED TO THE LANDSCAPE ARCHITECT FOR DIRECTION. THESE DRAWINGS SHALL NOT BE USED FOR CONSTRUCTION UNLESS STAMPED AND SIGNED BY THE LANDSCAPE ARCHITECT. THE CONTRACTOR IS NOT TO PROCEED IN UNCERTAINTY. THE LIMITS OF WORK ARE TO BE CLEARLY UNDERSTOOD BY THE CONTRACTOR PRIOR TO ANY WORK TAKING PLACE ON THE SITE.
- ALL DIMENSIONS ARE IN METERS UNLESS OTHERWISE NOTED. THE DRAWINGS MAY BE SCALED FOR APPROXIMATE LAYOUT. THE CONTRACTOR IS TO VERIFY ALL DIMENSIONS ON THE DRAWING(S) AND REPORT ANY DISCREPANCIES TO THE LANDSCAPE ARCHITECT.
- THE CONTRACTOR IS TO LOCATE AND MARK ALL INFRASTRUCTURE AND UTILITIES PRIOR TO ANY EXCAVATION WORK OR PLANTING ON THE SITE. DO NOT PLANT DIRECTLY ABOVE UNDERGROUND UTILITIES OR INFRASTRUCTURE UNLESS APPROVED BY THE LANDSCAPE ARCHITECT. DIG ALL HOLES BY HAND WHEN CLOSER THAN 1.0M TO ANY UNDERGROUND POWER, TELEPHONE OR GAS UTILITY. THE CONTRACTOR IS RESPONSIBLE FOR THE COORDINATION AND MAINTENANCE OF ALL UTILITY/INFRASTRUCTURE LOCATES FOR THE DURATION OF THE CONTRACT.
- THE CONTRACTOR SHALL SUPPLY ALL MATERIALS IN QUANTITIES SUFFICIENT TO COMPLETE WORK SHOWN ON THESE DRAWINGS. THE CONTRACTOR IS NOT TO SUBSTITUTE MATERIALS, PRODUCTS OR QUANTITIES WITHOUT PRIOR WRITTEN CONSENT OF THE LANDSCAPE ARCHITECT.
- THE CONTRACTOR IS TO TAKE ALL NECESSARY PRECAUTIONS TO PROTECT ALL EXISTING SITE FEATURES UNLESS SPECIFIED FOR REMOVAL/DEMOLITION. THIS INCLUDES ALL SURVEY BARS, STAKES, MONUMENTS AND SEDIMENT BARRIERS. THE CONTRACTOR IS RESPONSIBLE FOR ANY DAMAGES INCURRED DURING CONSTRUCTION AND MUST MAKE ALL NECESSARY RESTORATIONS AND REPAIRS TO ORIGINAL OR BETTER CONDITION.
- ALL EXISTING TREES, SHRUBS, AND HERBACEOUS PLANTS BEYOND THE LIMIT OF WORK ARE TO BE PROTECTED FROM CONSTRUCTION DAMAGE. THIS INCLUDES BUT IS NOT LIMITED TO: NOT STORING CONSTRUCTION MATERIALS OR FUEL WITHIN THE DRIPLINE OF AN EXISTING TREE, NOT ALTERING EXISTING GRADES OR COMPACTING SOIL AROUND PROTECTED VEGETATION AND TAKING CARE NOT TO DISTURB OR EXPOSE THE ROOTS OF ANY EXISTING TREES. THE CONTRACTOR IS RESPONSIBLE FOR ALL PROTECTION OR HOARDING MEASURES OF ALL EXISTING TREES AND VEGETATION TO BE PRESERVED WITHIN OR ADJACENT TO CONSTRUCTION WORK LIMITS.
- CONTRACTOR IS RESPONSIBLE FOR THE REMOVAL OF ALL DEBRIS, GARBAGE AND SURPLUS MATERIALS ON SITE RELATED TO THEIR CONTRACT OR WORK AND MUST KEEP THE SITE IN A CLEAN, SAFE, USEABLE CONDITION AT ALL TIMES OR AS DIRECTED BY THE CONTRACT ADMINISTRATOR.

PLANTING NOTES

- THE CONTRACTOR MUST NOTIFY THE LANDSCAPE ARCHITECT PRIOR TO THE COMMENCEMENT OF ANY PLANTING. THE CONTRACTOR SHALL SUPPLY ALL PLANTS AND MATERIALS IN QUANTITIES SUFFICIENT TO COMPLETE THE WORK SHOWN ON THIS DRAWING. ANY DISCREPANCIES BETWEEN QUANTITIES SHALL BE REPORTED TO THE LANDSCAPE ARCHITECT.
- ALL LANDSCAPE WORKS WILL BE WARRANTED **FOR A PERIOD OF TWENTY-FOUR (24) MONTHS** FOLLOWING INSPECTION AND WRITTEN NOTICE OF START OF WARRANTY PERIOD AS DETERMINED AND PROVIDED BY THE LANDSCAPE ARCHITECT. PLANT MATERIAL, WHICH IS NOT IN A HEALTHY, VIGOROUS GROWING CONDITION AT THE END OF THE WARRANTY PERIOD, SHALL BE REPLACED TO THE SATISFACTION OF THE LANDSCAPE ARCHITECT / OWNER.
- THE LANDSCAPE ARCHITECT RESERVES THE RIGHT TO EXTEND CONTRACTOR'S WARRANTY RESPONSIBILITIES FOR AN ADDITIONAL YEAR IF, AT THE END OF INITIAL WARRANTY PERIOD, LEAF DEVELOPMENT AND GROWTH IS NOT SUFFICIENT TO ENSURE FUTURE SURVIVAL AS DETERMINED BY THE LANDSCAPE ARCHITECT.
- THE CONTRACTOR IS TO IDENTIFY WITH LANDSCAPE ARCHITECT/OWNER ANY MAINTENANCE REQUIREMENTS NECESSARY FOR WARRANTY PURPOSES.
- PLANT MATERIALS SPECIFIED FOR THIS PROJECT WILL CONFORM TO THE CANADIAN NURSERY LANDSCAPE ASSOCIATION (C.N.L.A.) FOR SIZE, VARIETY AND CONDITION AS INDICATED ON THE PLANT SCHEDULE SHOWN ON THESE DRAWINGS. ANY PLANT MATERIALS WHICH DO NOT CONFORM WILL BE PROMPTLY REMOVED FROM THE SITE AND REPLACED BY THE CONTRACTOR AT NO ADDITIONAL COST TO THE PROJECT.
- THE LANDSCAPE ARCHITECT IS TO BE CONTACTED FOR INSPECTION AND WRITTEN APPROVAL PRIOR TO PLANT MATERIAL ARRIVING ON SITE. THE LANDSCAPE ARCHITECT RESERVES THE RIGHT TO REJECT ANY PLANT MATERIALS THAT HAVE NOT BEEN INSPECTED AND APPROVED.
- THE LANDSCAPE ARCHITECT RESERVES THE RIGHT TO REFUSE ACCEPTANCE OF ANY PLANT DISPLAYING POOR GROWTH HABITS, INJURY OR DISEASE. ANY PLANT MATERIAL THAT IS REJECTED BY THE LANDSCAPE ARCHITECT WILL BE PROMPTLY REMOVED FROM THE SITE AND REPLACED WITH MATERIAL OF ACCEPTABLE QUALITY AT NO ADDITIONAL CHARGE TO THE PROJECT.
- PLANT MATERIALS COLLECTED FROM WILD SOURCES WILL NOT BE ACCEPTED WITHOUT WRITTEN APPROVAL OF THE LANDSCAPE ARCHITECT. THE LANDSCAPE ARCHITECT RESERVES THE RIGHT TO REQUIRE THAT SUPPLIER INVOICES BE SUBMITTED FOR INSPECTION AND APPROVAL PRIOR TO ACCEPTANCE.
- ON-SITE LAYOUT OF THE PLANT MATERIALS TO BE APPROVED BY THE LANDSCAPE ARCHITECT PRIOR TO INSTALLATION. MINOR FIELD ADJUSTMENTS TO PLANT MATERIAL LOCATIONS MAY BE NECESSARY TO RESPOND TO THE LOCATIONS OF EXISTING PLANTS AND SITE CONDITIONS. THE CONTRACTOR TO REVIEW WITH LANDSCAPE ARCHITECT WHERE RELOCATIONS ARE NECESSARY. THE CONTRACTOR MUST RECEIVE APPROVAL FROM LANDSCAPE ARCHITECT PRIOR TO INSTALLATION.
- PLANTS ARE NOT TO BE INSTALLED DURING EXTREME HEAT, DROUGHT, OR OTHER UNDESIRABLE CONDITIONS. THOROUGHLY WATER ALL PLANTS IMMEDIATELY AFTER INSTALLATION. THE CONTRACTOR SHALL REGULARLY MONITOR SITE CONDITIONS AND WATER AS REQUIRED TO ENSURE HEALTHY GROWTH CONDITIONS THROUGHOUT THE DURATION OF THE WARRANTY PERIOD.
- DO NOT PLANT DIRECTLY IN CENTERLINE OF DRAINAGE SWALES OR DEPRESSION AREAS. WHERE PROPOSED PLANTING LOCATIONS CONFLICT WITH CONSTRUCTED SWALES OR LOW-LYING WET AREAS, CONTACT LANDSCAPE ARCHITECT FOR DIRECTION.
- ALL PLANTS ARE TO BE PLANTED IN ACCORDANCE WITH THE PLANTING DETAILS SHOWN ON THIS DRAWING. ALL PLANTS ARE TO BE INSTALLED VERTICAL AND PLUMB, REGARDLESS OF GROUND SLOPE.
- TOPSOIL: EACH SOURCE OF TOPSOIL, IMPORTED OR NATIVE TO BE APPROVED BY LANDSCAPE ARCHITECT PRIOR TO USE. SUBMIT TOPSOIL ANALYSIS/TEST RESULTS TO LANDSCAPE ARCHITECT PRIOR TO ORDER OR DELIVERY TO SITE. TESTING TO BE IN ACCORDANCE WITH CONTRACT SPECIFICATIONS. SUPPLY AND PLACE TOPSOIL IN ACCORDANCE WITH OPSS 802 TO A MINIMUM DEPTH OF **150MM IN SEED/SOD AREAS, 600MM DEPTH IN PERENNIAL/ SHRUB PLANTING BEDS, AND 1000MM DEPTH WHERE TREES ARE SUPPORTED**, UNLESS OTHERWISE SPECIFIED.
- SHREDDED CEDAR BARK MULCH:** TO BE SPREAD UNIFORMLY AROUND THE BASE OF TREES AND SHRUBS TO A MINIMUM DEPTH OF **100 MM**. DO NOT PLACE MULCH IN DIRECT CONTACT WITH TRUNK OR STEM(S). ALLOW A **100 MM** MULCH FREE ZONE AT TRUNK/STEMS. SHRUBS TO BE IN CONTINUOUSLY MULCHED PLANTING BEDS UNLESS OTHERWISE SPECIFIED.
- SUPPLY AND PLACE SEED IN ACCORDANCE WITH OPSS 804 UNLESS OTHERWISE SPECIFIED. ALL 5:1 OR GREATER SLOPES TO BE SEEDED WITH TACKIFIER. ALL SLOPES GREATER THAN 3:1 SHALL BE MATTED WITH AN EROSION CONTROL BLANKET. SUPPLY AND PLACE SOD IN ACCORDANCE WITH OPSS 803 UNLESS OTHERWISE SPECIFIED.
- THE CONTRACTOR IS TO REMOVE DEAD OR DAMAGED BRANCHES ON TREES OR SHRUBS. ALL PRUNING SHALL BE PERFORMED IN ACCORDANCE WITH STANDARD HORTICULTURAL PRACTICES AND APPROPRIATE TIMING FOR EACH SPECIES.
- ALL STAKES AND ASSOCIATED TIES ARE TO BE REMOVED AFTER THE FIRST FULL GROWING SEASON. RODENT GUARDS ARE TO BE REMOVED AT THE CONCLUSION OF THE WARRANTY PERIOD. GATORBAGS ARE TO BE REMOVED FOR WINTER MONTHS.

SOD NOTES

- ANY LAWN AREAS DISTURBED BY CONSTRUCTION SHALL BE RE-SODDED AND REPAIRED TO ORIGINAL CONDITION OR BETTER.
- SOD AND SODDING OPERATIONS TO BE IN ACCORDANCE WITH OPSS 803, EXCEPT AS NOTED BELOW.
- SOD TO BE DELIVERED TO PROJECT WITHIN 24 HOURS OF BEING HARVESTED AND LAID WITHIN 36 HOURS THEREAFTER.
- ROUGH GRADED AND COMPACTED SOIL SHALL BE SCARIFIED TO A MINIMUM DEPTH OF 100 MM FREE OF ALL STONES, ROOTS, BRANCHES, LARGER THAN 25 MM DIAMETER. TOPSOIL TO BE SPREAD AT A MINIMUM DEPTH OF 150 MM COMPACTED TO 85% S.P.D.
- PLACE SOD ON PREPARED TOPSOIL WITH STAGGERED JOINTS AND BUTT TIGHTLY. IRRIGATE IMMEDIATELY TO ENSURE MOISTURE PENETRATION INTO THE UPPER 100 MM (4") OF SOIL. MACHINE ROLL TO ENSURE CONTACT WITH TOPSOIL. REPAIR MINOR GRADE DEFICIENCIES AND IRREGULARITIES.
- WATER SOD IMMEDIATELY AFTER LAYING TO OBTAIN MOISTURE PENETRATION TO A MINIMUM OF 100 MM DEPTH WITHIN TOPSOIL. MAINTAIN SOD PER OPSS 803. SOD MUST BE CUT A MINIMUM OF TWO TIMES FOR FINAL ACCEPTANCE AT THE DISCRETION OF THE LANDSCAPE ARCHITECT.

NOTE: THIS IS A SUMMARY OF ALL PLANT MATERIAL ON THE LANDSCAPE PLANS

MASTER PLANT SCHEDULE LP-2 TO LP-5					
CODE	QTY	BOTANICAL NAME	COMMON NAME	SIZE	CONTAINER
CONIFEROUS TREES					
JV	12	Juniperus virginiana	Eastern Redcedar	200cm ht.	W.B.
PG	20	Picea glauca	White Spruce	200cm ht.	W.B.
PP	28	Picea pungens	Colorado Spruce	200cm ht.	W.B.
PS	19	Pinus strobus	Eastern White Pine	200cm ht.	W.B.
	79	SUBTOTAL:			
DECIDUOUS TREES					
AR	19	Acer rubrum	Red Maple	70mm cal.	W.B.
AF	33	Acer x freemanii 'Jeffersred'	Autumn Blaze® Freeman Maple	70mm cal.	W.B.
BA	15	Betula alleghaniensis	Yellow Birch	70mm cal.	W.B.
CO	26	Celtis occidentalis	Common Hackberry	70mm cal.	W.B.
GT	27	Gleditsia triacanthos var. inermis 'Shademaster'	Shademaster Honey Locust	70mm cal.	W.B.
GD	6	Gymnocladus dioicus	Kentucky Coffeetree	70mm cal.	W.B.
TA	6	Tilia americana	Basswood	70mm cal.	W.B.
	132	SUBTOTAL:			
CONIFEROUS SHRUBS					
Jcb	35	Juniperus chinensis 'Blaauw'	Blaauw's Juniper	40cm	3 gal. pot
Jcd	45	Juniperus communis depressa 'Aurea'	Canadian Golden Juniper	40cm	3 gal. pot
	80	SUBTOTAL:			
DECIDUOUS SHRUBS					
Ac	32	Amelanchier canadensis	Canadian Serviceberry Multi-trunk	125 cm	7 gal. pot
Aa	146	Aronia arbutifolia 'Brilliantissima'	Brilliant Red Chokeberry	50 cm wt.	3 gal. pot
Ca	219	Clethra alnifolia 'Hummingbird'	Hummingbird Summersweet	30cm	3 gal. pot
Cr	25	Cornus racemosa	Gray Dogwood	60 cm ht	3 gal. pot
Cs	177	Cornus sericea 'Farrow'	Arctic Fire® Red Twig Dogwood	50cm ht.	3 gal. pot
Hv	35	Hamamelis virginiana	Common Witch Hazel	80 cm	7 gal. pot
Rt	64	Rhus typhina	Staghorn Sumac	50cm	3 gal. pot
Ra	27	Ribes americanum	American Black Currant	40cm	3 gal. pot
Rb	16	Rosa blanda	Smooth Rose	40cm	2 gal. pot
Sc	78	Sambucus canadensis	American Elderberry	40cm	3 gal. pot
Vd	31	Viburnum dentatum	Arrowwood	40cm	3 gal. pot
	850	SUBTOTAL:			
GRASSES					
cak	566	Calamagrostis x acutiflora 'Karl Foerster'	Karl Foerster Feather Reed Grass	---	
dcb	660	Deschampsia cespitosa 'Bronzeschleier'	Bronze Veil Tufted Hair Grass	---	1 gal. pot
pva	72	Panicum virgatum 'Apache Rose'	Apache Rose Switch Grass	---	1 gal. pot
ssc	408	Schizachyrium scoparium	Little Bluestem	---	1 gal. pot
	1,706	SUBTOTAL:			
PERENNIALS					
epm	236	Echinacea purpurea 'Merlot'	Merlot Coneflower	---	1 gal. pot
hr	446	Hemerocallis x 'Ruby Stella'	Ruby Stella Daylily	---	1 gal. pot
ho	417	Hemerocallis x 'Stella de Oro'	Stella de Oro Daylily	---	1 gal. pot
rft	221	Rudbeckia fulgida Goldsturm	Coneflower	---	1 gal. pot
	1,320	SUBTOTAL:			

- THIS DRAWING IS THE EXCLUSIVE PROPERTY OF C.F. CROZIER & ASSOCIATES INC. AND THE MODIFICATION AND/OR REPRODUCTION OF ANY PART OF THIS DRAWING IS STRICTLY PROHIBITED WITHOUT WRITTEN AUTHORIZATION FROM THIS OFFICE.
- THE DIGITAL FILES CONTAIN INTELLECTUAL AND DIGITAL DATA PROPERTY THAT IS THE EXCLUSIVE PROPERTY OF C.F. CROZIER & ASSOCIATES INC.
- THE CONTRACTOR SHALL VERIFY ALL DIMENSIONS, LEVELS, AND DATUMS ON SITE AND REPORT ANY DISCREPANCIES OR OMISSIONS TO C.F. CROZIER & ASSOCIATES INC. PRIOR TO CONSTRUCTION.
- THIS DRAWING IS TO BE READ AND UNDERSTOOD IN CONJUNCTION WITH ALL OTHER PLANS AND DOCUMENTS APPLICABLE TO THIS PROJECT.
- ALL EXISTING UNDERGROUND UTILITIES TO BE VERIFIED IN THE FIELD BY THE CONTRACTOR PRIOR TO CONSTRUCTION.
- DO NOT SCALE DRAWINGS.

NOTES:

- TOPOGRAPHIC SURVEY PROVIDED BY R-PE SURVEYING LTD. AND SITE PLAN PROVIDED BY POWERS BROWN ARCHITECTURE.
- BASE CIVIL ENGINEERING INFORMATION PROVIDED BY C.F. CROZIER & ASSOCIATES INC.
- ALL DIMENSIONS ARE IN METERS UNLESS OTHERWISE NOTED.
- CONTRACTOR IS RESPONSIBLE FOR LOCATING ALL UTILITIES BEFORE CONSTRUCTION BEGINS.

Tom



No.	ISSUE	DATE: YYYY/MM/DD
0	ISSUED FOR 1ST SUBMISSION	2025/11/13

LANDSCAPE ARCHITECT

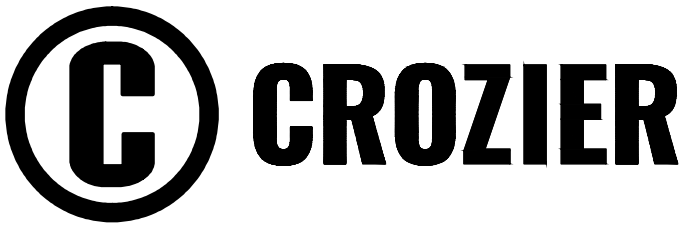


Project

BROCCOLINI ESTATE GROUP
AIRPORT ROAD INDUSTRIAL DEVELOPMENT

Drawing

LANDSCAPE DETAILS



Drawn By	M.M./C.B.	Design By	A.P./C.B.	Project	2278-7228
Check By	A.P.	Check By	T.M.	Drawing	LD-3